

Data Path : Z:\pestpcbsrv\HPCHEM1\ECD\_S\Data\PS052820\  
 Data File : PS010496.D  
 Signal(s) : Signal #1: ECD1A.ch Signal #2: ECD2B.ch  
 Acq On : 28 May 2020 19:28  
 Operator : DD\AJ  
 Sample : L2746-05  
 Misc :  
 ALS Vial : 11 Sample Multiplier: 1

Instrument :  
 ECD\_S  
 ClientSampleId :  
 NM109-COMP-2020-0-6

Integration File signal 1: autoint1.e  
 Integration File signal 2: autoint2.e  
 Quant Time: May 29 06:41:25 2020  
 Quant Method : Z:\pestpcbsrv\HPCHEM1\ECD\_S\Method\PS051120.M  
 Quant Title : 8080.M  
 QLast Update : Mon May 11 17:06:53 2020  
 Response via : Initial Calibration  
 Integrator: ChemStation

Volume Inj. : 2 µl  
 Signal #1 Phase : Rtx-CLPesticides Signal #2 Phase: Rtx-CLPesticides2  
 Signal #1 Info : 30M x 0.32mm x0.5 Signal #2 Info : 30M x 0.32mm x 0.25µm

	Compound	RT#1	RT#2	Resp#1	Resp#2	ng/ml	ng/ml
-----							
System Monitoring Compounds							
4) S	2,4-DCAA	7.230	6.920	201.0E6	161.2E6	285.948	300.624
Target Compounds							
1) T	Dalapon	2.992	2.584	19935732	421.6E6	22.364	520.355 #
2) T	3,5-DICHL...	6.393	6.100	3375378	74037262	3.499	90.913 #
3) T	4-Nitroph...	0.000	6.512	0	4357674	N.D.	13.115
5) T	DICAMBA	0.000	7.128	0	9415091	N.D.	4.300
6) T	MCP P	7.596	7.185	14219557	12150887	6.496	6.620
7) T	MCPA	7.780	7.414	45752417	25036498	14.685	9.203 #
8) T	DICHLORPROP	8.131	7.736	4109297	30616457	6.155	54.230 #
9) T	2,4-D	8.353	8.011	10648048	5704006	15.073	8.226 #
10) T	Pentachlo...	8.655	8.438	18404342	12172028	2.024	1.797
11) T	2,4,5-TP ...	9.247	8.770	49457590	276.1E6	13.420	95.297 #
12) T	2,4,5-T	9.442	9.173	95411765	68194418	27.115	23.454
13) T	2,4-DB	10.088	9.707	68577322	52497218	136.325	131.722
14) T	DINOSEB	11.232	10.035	93082167	99091738	33.972	46.501 #
15) T	Picloram	10.997	11.026	1687.2E6	21871854	367.993	5.181 #
16) T	DCPA	11.459	10.946	51714440	18164446	11.432	5.081 #
-----							

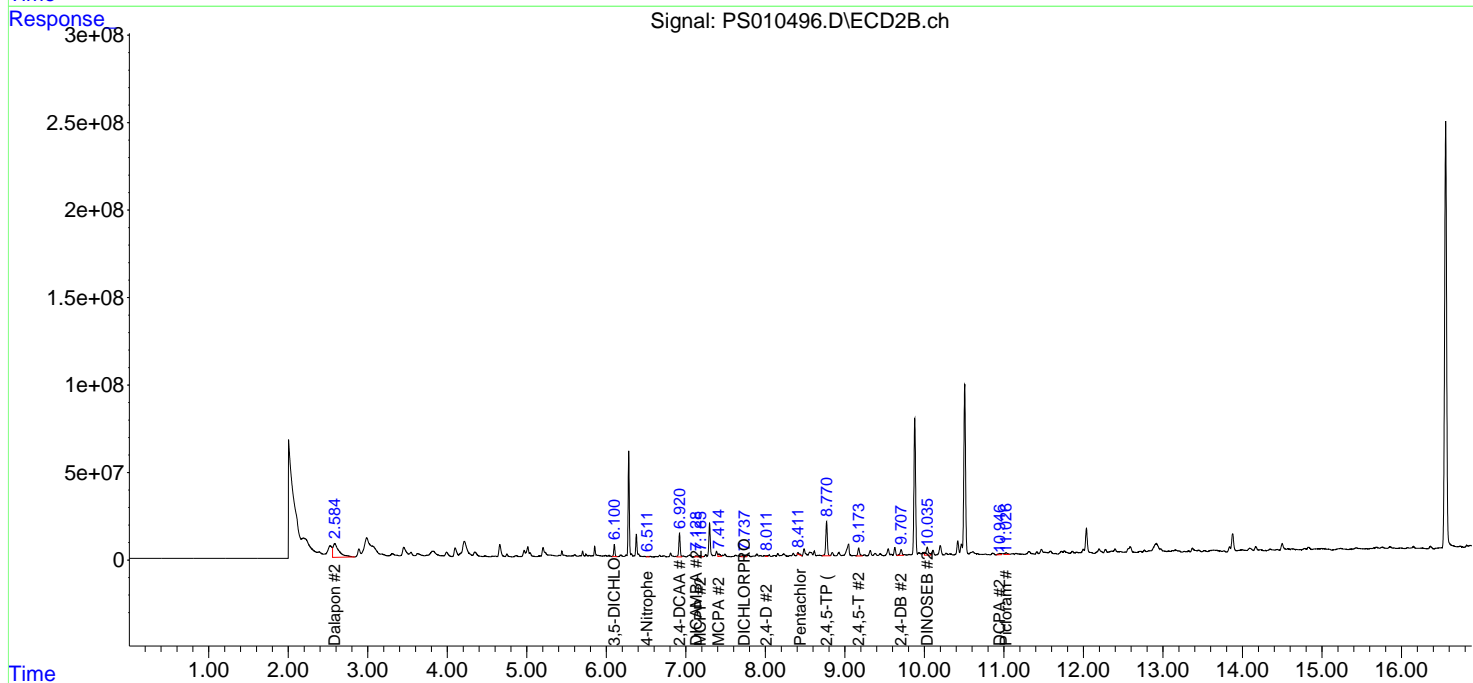
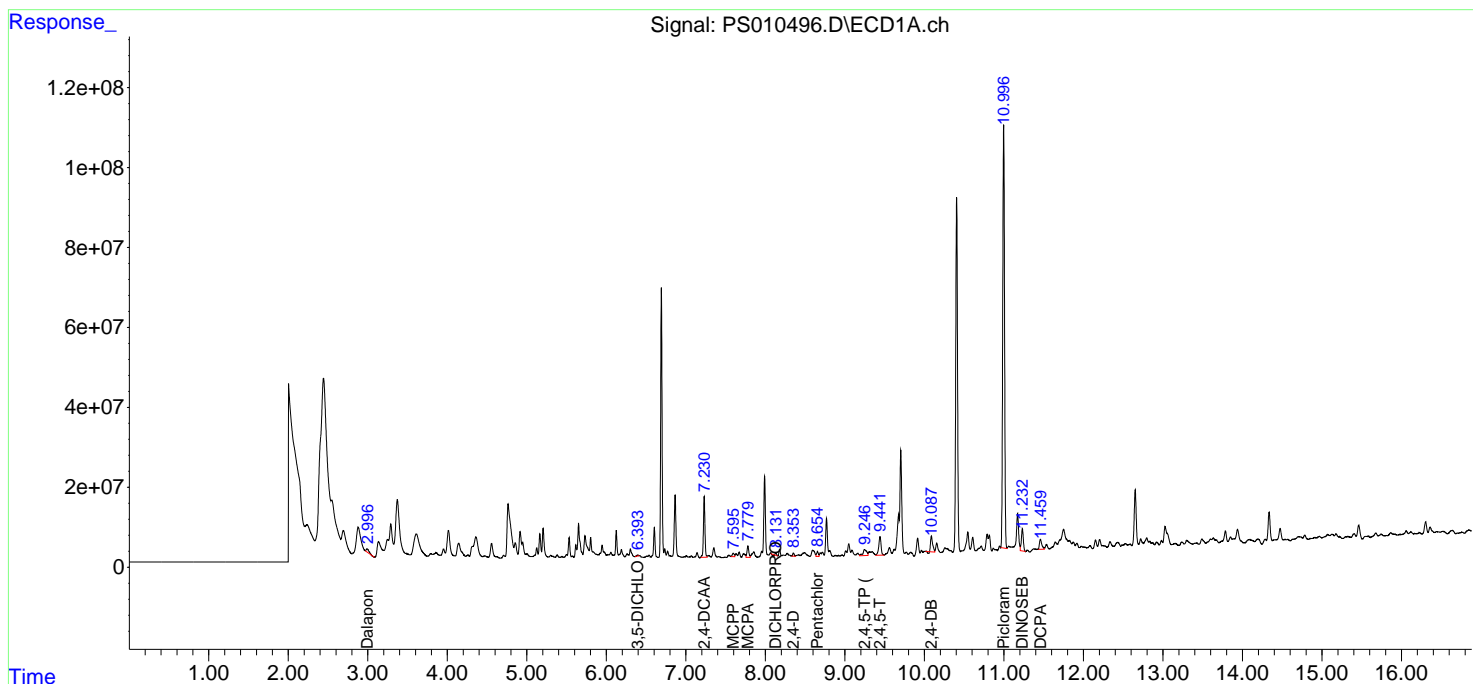
(f)=RT Delta > 1/2 Window (#)=Amounts differ by > 25% (m)=manual int.

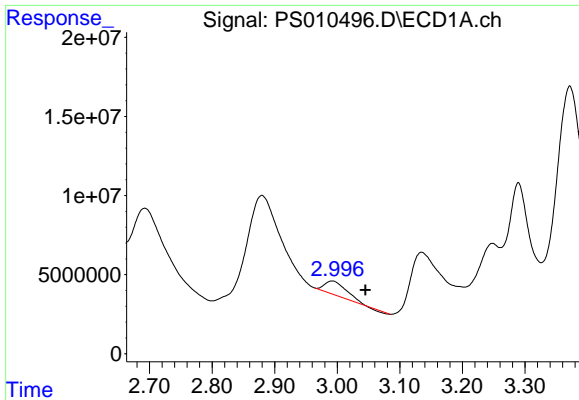
Data Path : Z:\pestpcbsrv\HPCHEM1\ECD\_S\Data\PS052820\  
 Data File : PS010496.D  
 Signal(s) : Signal #1: ECD1A.ch Signal #2: ECD2B.ch  
 Acq On : 28 May 2020 19:28  
 Operator : DD\AJ  
 Sample : L2746-05  
 Misc :  
 ALS Vial : 11 Sample Multiplier: 1

Instrument :  
 ECD\_S  
 ClientSampleId :  
 NM109-COMP-2020-0-6

Integration File signal 1: autoint1.e  
 Integration File signal 2: autoint2.e  
 Quant Time: May 29 06:41:25 2020  
 Quant Method : Z:\pestpcbsrv\HPCHEM1\ECD\_S\Method\PS051120.M  
 Quant Title : 8080.M  
 QLast Update : Mon May 11 17:06:53 2020  
 Response via : Initial Calibration  
 Integrator: ChemStation

Volume Inj. : 2 µl  
 Signal #1 Phase : Rtx-CLPesticides Signal #2 Phase: Rtx-CLPesticides2  
 Signal #1 Info : 30M x 0.32mm x0.5 Signal #2 Info : 30M x 0.32mm x 0.25µm

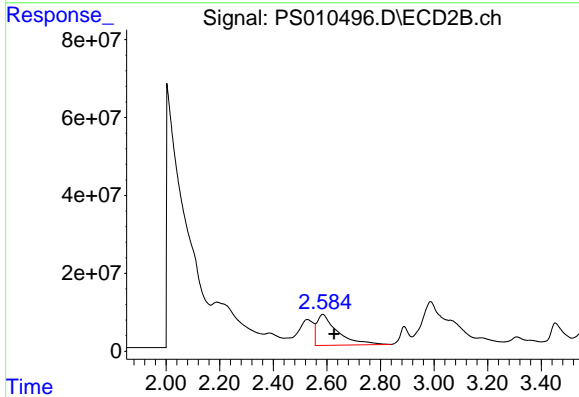




#1 Dalapon

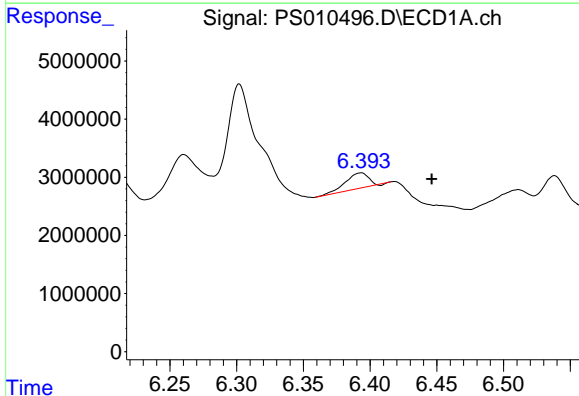
R.T.: 2.992 min  
Delta R.T.: -0.053 min  
Response: 19935732  
Conc: 22.36 ng/ml

Instrument :  
ECD\_S  
ClientSampleId :  
NM109-COMP-2020-0-6



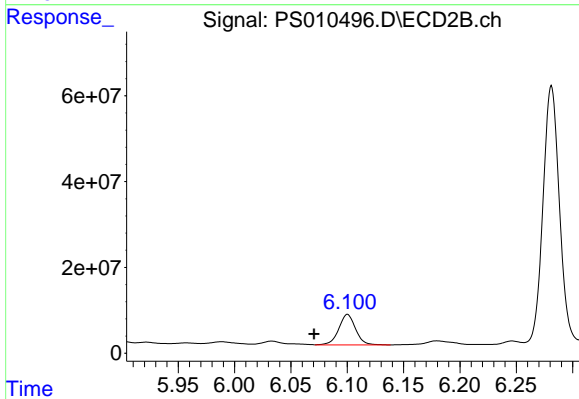
#1 Dalapon

R.T.: 2.584 min  
Delta R.T.: -0.042 min  
Response: 421563461  
Conc: 520.35 ng/ml



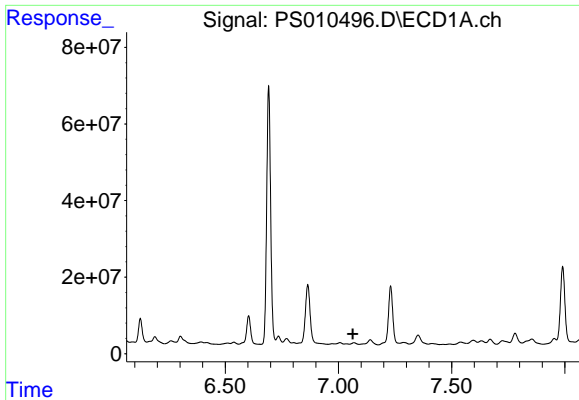
#2 3,5-DICHLOROBENZOIC ACID

R.T.: 6.393 min  
Delta R.T.: -0.053 min  
Response: 3375378  
Conc: 3.50 ng/ml



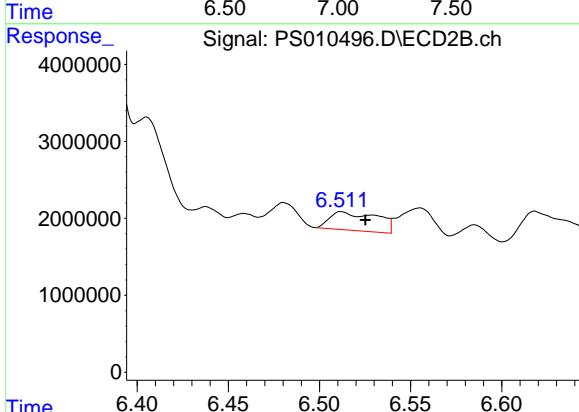
#2 3,5-DICHLOROBENZOIC ACID

R.T.: 6.100 min  
Delta R.T.: 0.030 min  
Response: 74037262  
Conc: 90.91 ng/ml

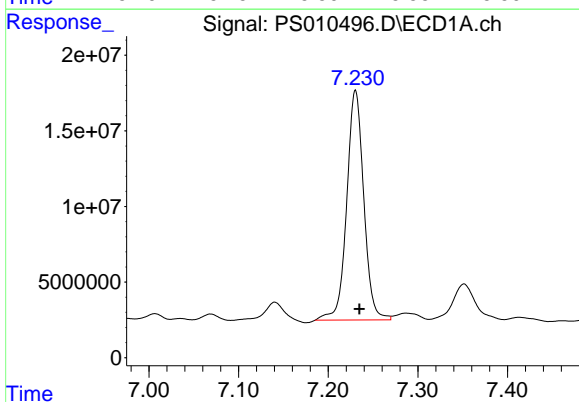


#3 4-Nitrophenol  
 R.T.: 0.000 min  
 Exp R.T.: 7.064 min  
 Response: 0  
 Conc: N.D.

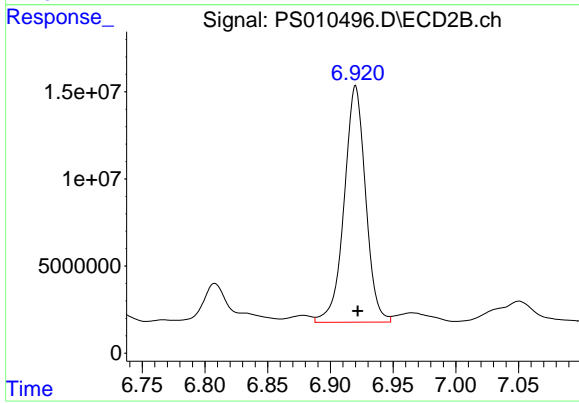
Instrument :  
 ECD\_S  
 ClientSampleId :  
 NM109-COMP-2020-0-6



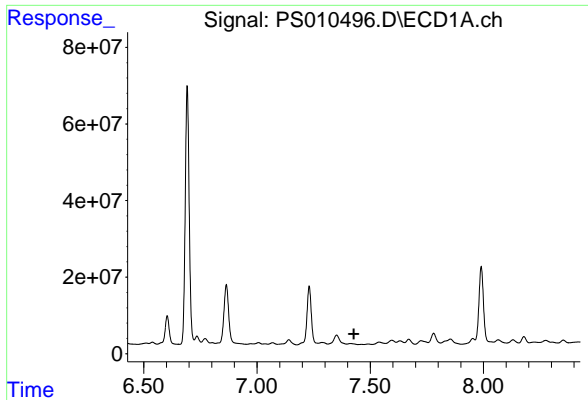
#3 4-Nitrophenol  
 R.T.: 6.512 min  
 Delta R.T.: -0.013 min  
 Response: 4357674  
 Conc: 13.12 ng/ml



#4 2,4-DCAA  
 R.T.: 7.230 min  
 Delta R.T.: -0.004 min  
 Response: 201048730  
 Conc: 285.95 ng/ml



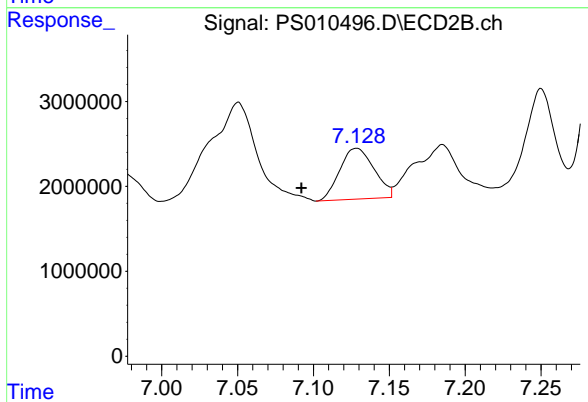
#4 2,4-DCAA  
 R.T.: 6.920 min  
 Delta R.T.: -0.002 min  
 Response: 161221837  
 Conc: 300.62 ng/ml



#5 DICAMBA

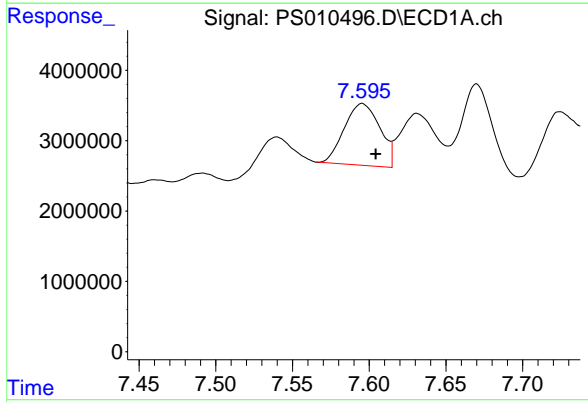
R.T.: 0.000 min  
 Exp R.T.: 7.428 min  
 Response: 0  
 Conc: N.D.

**Instrument :**  
 ECD\_S  
**ClientSampleId :**  
 NM109-COMP-2020-0-6



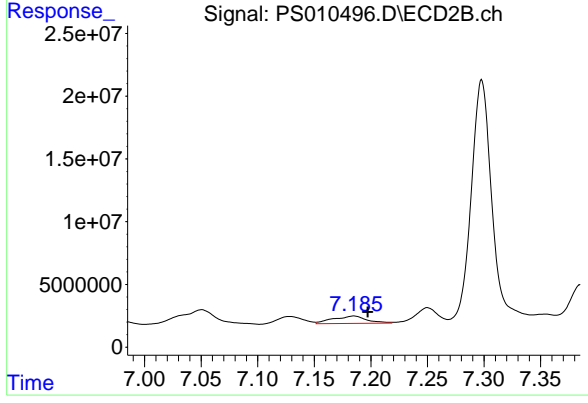
#5 DICAMBA

R.T.: 7.128 min  
 Delta R.T.: 0.036 min  
 Response: 9415091  
 Conc: 4.30 ng/ml



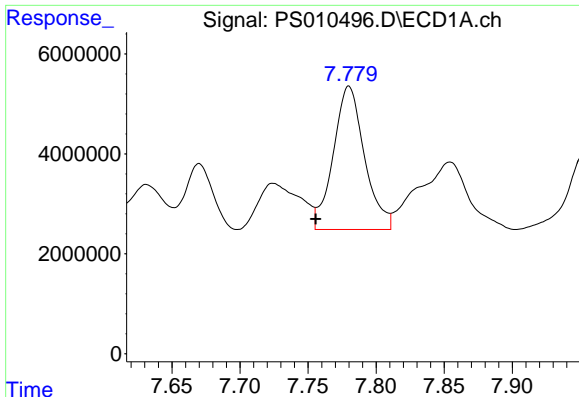
#6 MCP

R.T.: 7.596 min  
 Delta R.T.: -0.009 min  
 Response: 14219557  
 Conc: 6.50 ug/ml



#6 MCP

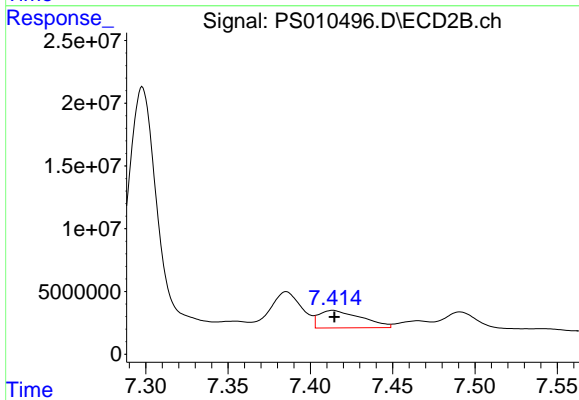
R.T.: 7.185 min  
 Delta R.T.: -0.012 min  
 Response: 12150887  
 Conc: 6.62 ug/ml



#7 MCPA

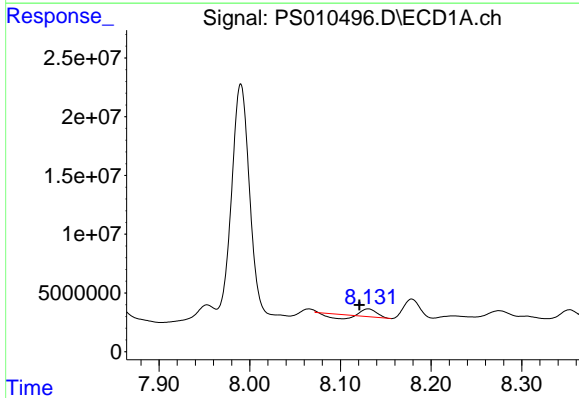
R.T.: 7.780 min  
 Delta R.T.: 0.024 min  
 Response: 45752417  
 Conc: 14.69 ug/ml

Instrument :  
 ECD\_S  
 ClientSampleId :  
 NM109-COMP-2020-0-6



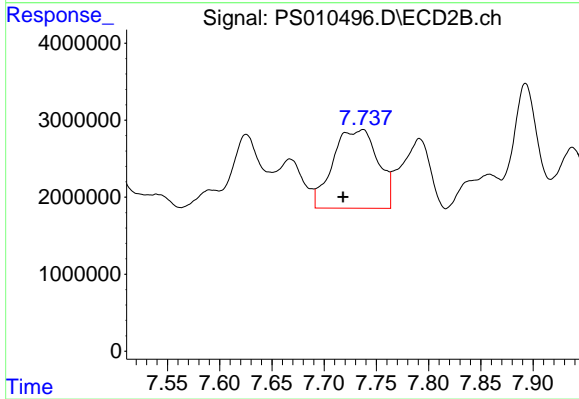
#7 MCPA

R.T.: 7.414 min  
 Delta R.T.: 0.000 min  
 Response: 25036498  
 Conc: 9.20 ug/ml



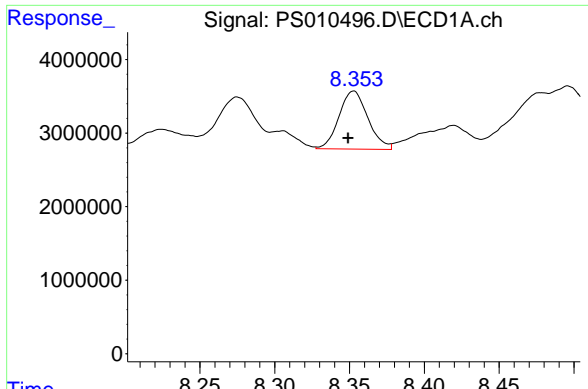
#8 DICHLORPROP

R.T.: 8.131 min  
 Delta R.T.: 0.010 min  
 Response: 4109297  
 Conc: 6.16 ng/ml



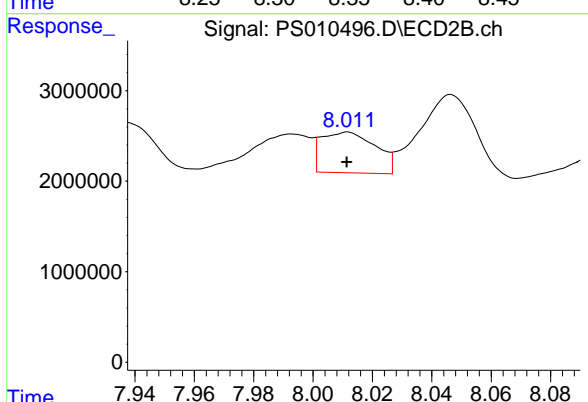
#8 DICHLORPROP

R.T.: 7.736 min  
 Delta R.T.: 0.018 min  
 Response: 30616457  
 Conc: 54.23 ng/ml

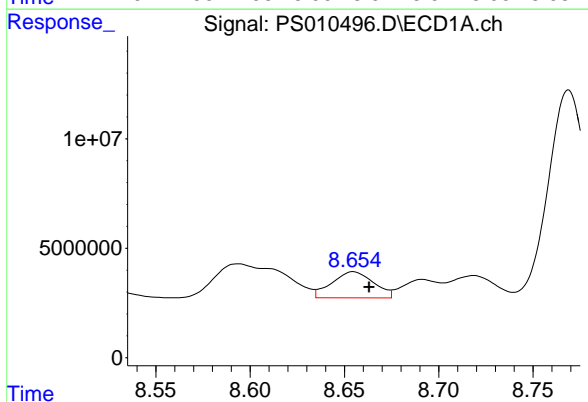


#9 2,4-D  
 R.T.: 8.353 min  
 Delta R.T.: 0.003 min  
 Response: 10648048  
 Conc: 15.07 ng/ml

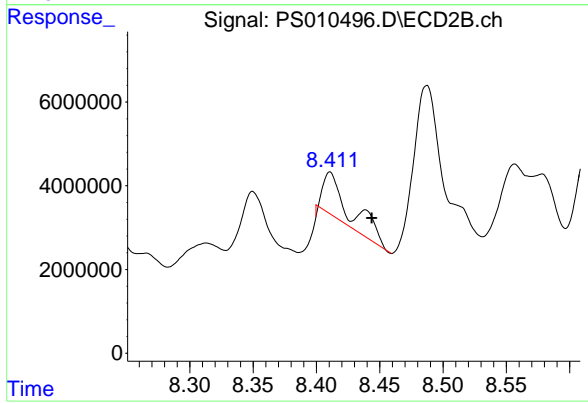
Instrument :  
 ECD\_S  
 ClientSampleId :  
 NM109-COMP-2020-0-6



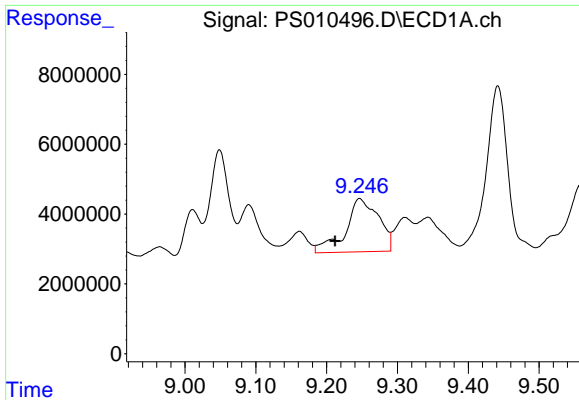
#9 2,4-D  
 R.T.: 8.011 min  
 Delta R.T.: 0.000 min  
 Response: 5704006  
 Conc: 8.23 ng/ml



#10 Pentachlorophenol  
 R.T.: 8.655 min  
 Delta R.T.: -0.008 min  
 Response: 18404342  
 Conc: 2.02 ng/ml

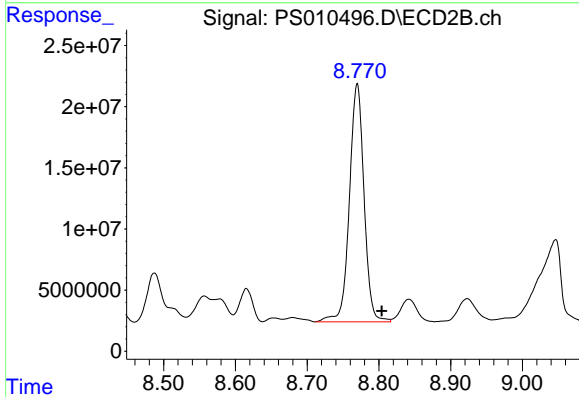


#10 Pentachlorophenol  
 R.T.: 8.438 min  
 Delta R.T.: -0.005 min  
 Response: 12172028  
 Conc: 1.80 ng/ml

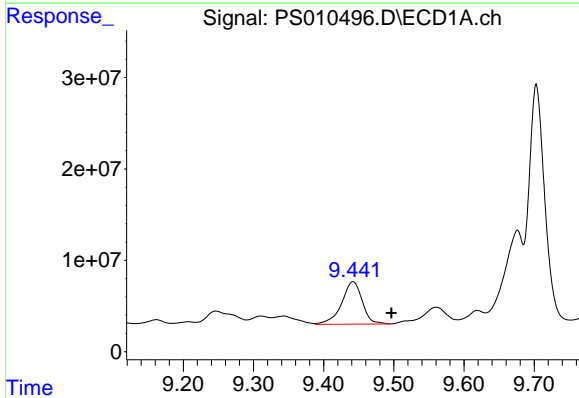


#11 2,4,5-TP (SILVEX)  
 R.T.: 9.247 min  
 Delta R.T.: 0.035 min  
 Response: 49457590  
 Conc: 13.42 ng/ml

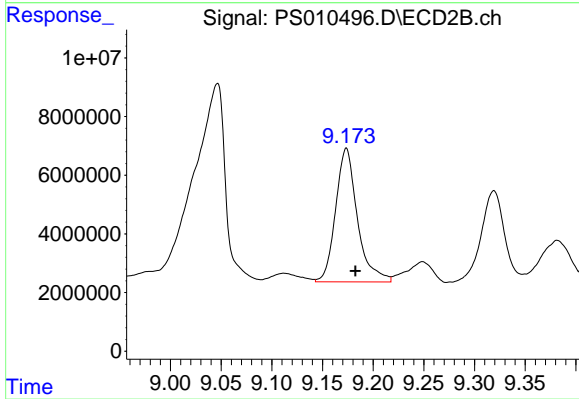
Instrument :  
 ECD\_S  
 ClientSampleId :  
 NM109-COMP-2020-0-6



#11 2,4,5-TP (SILVEX)  
 R.T.: 8.770 min  
 Delta R.T.: -0.034 min  
 Response: 276059857  
 Conc: 95.30 ng/ml

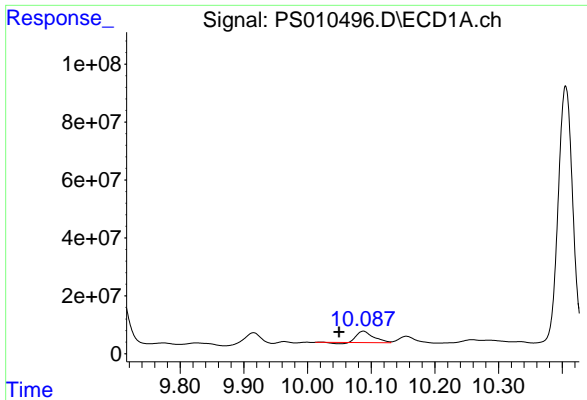


#12 2,4,5-T  
 R.T.: 9.442 min  
 Delta R.T.: -0.055 min  
 Response: 95411765  
 Conc: 27.11 ng/ml



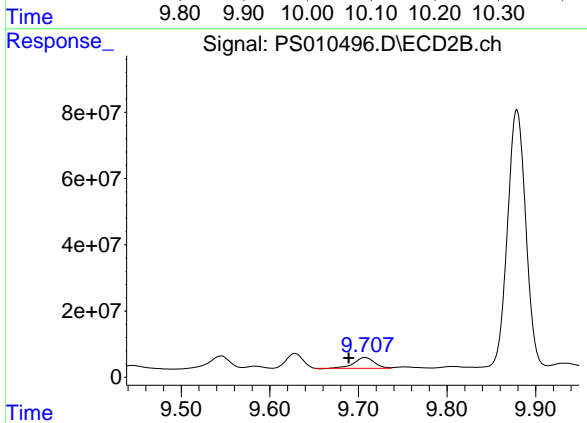
#12 2,4,5-T  
 R.T.: 9.173 min  
 Delta R.T.: -0.009 min  
 Response: 68194418  
 Conc: 23.45 ng/ml



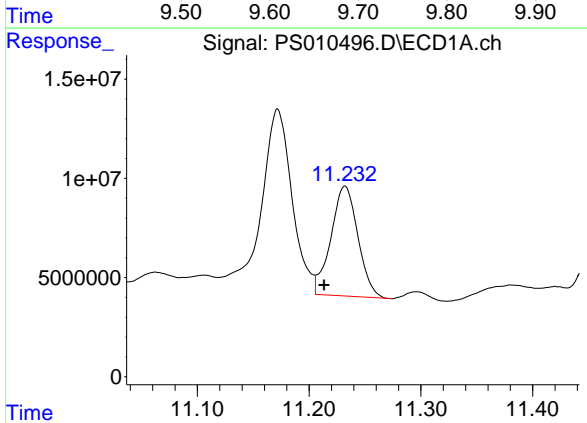


#13 2,4-DB  
 R.T.: 10.088 min  
 Delta R.T.: 0.038 min  
 Response: 68577322  
 Conc: 136.32 ng/ml

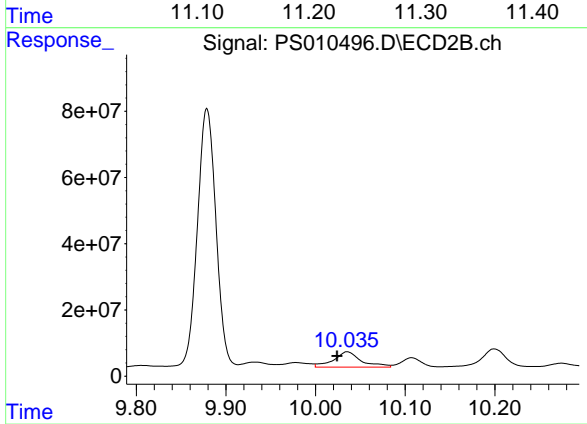
**Instrument :**  
 ECD\_S  
**ClientSampleId :**  
 NM109-COMP-2020-0-6



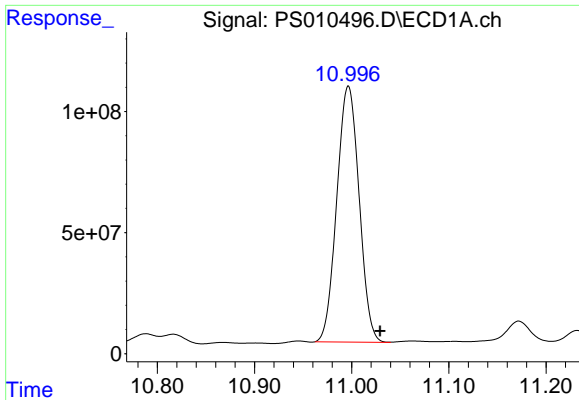
#13 2,4-DB  
 R.T.: 9.707 min  
 Delta R.T.: 0.018 min  
 Response: 52497218  
 Conc: 131.72 ng/ml



#14 DINOSEB  
 R.T.: 11.232 min  
 Delta R.T.: 0.018 min  
 Response: 93082167  
 Conc: 33.97 ng/ml

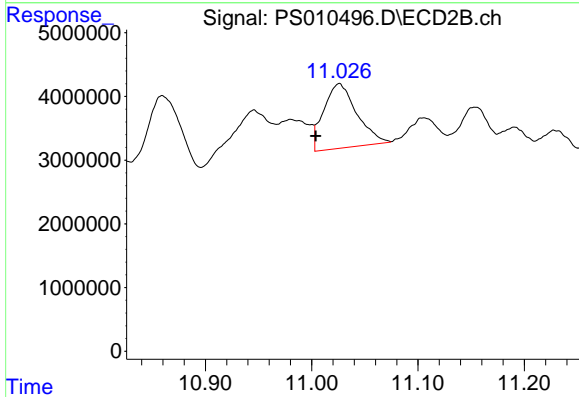


#14 DINOSEB  
 R.T.: 10.035 min  
 Delta R.T.: 0.011 min  
 Response: 99091738  
 Conc: 46.50 ng/ml

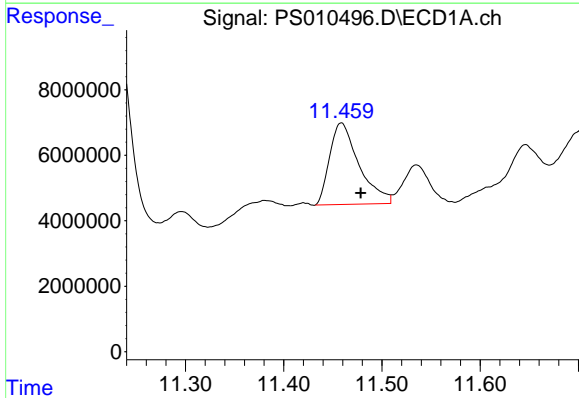


#15 Picloram  
 R.T.: 10.997 min  
 Delta R.T.: -0.033 min  
 Response: 1687163738  
 Conc: 367.99 ng/ml

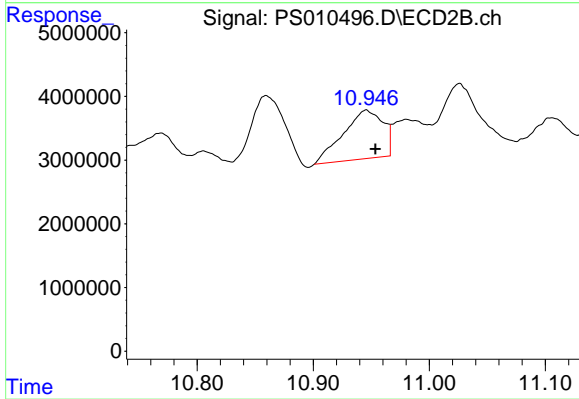
**Instrument :**  
 ECD\_S  
**ClientSampleId :**  
 NM109-COMP-2020-0-6



#15 Picloram  
 R.T.: 11.026 min  
 Delta R.T.: 0.022 min  
 Response: 21871854  
 Conc: 5.18 ng/ml



#16 DCPA  
 R.T.: 11.459 min  
 Delta R.T.: -0.020 min  
 Response: 51714440  
 Conc: 11.43 ng/ml



#16 DCPA  
 R.T.: 10.946 min  
 Delta R.T.: -0.008 min  
 Response: 18164446  
 Conc: 5.08 ng/ml