

Data Path : Z:\pestpcbsrv\HPCHEM1\ECD_S\Data\PS052821\
 Data File : PS015134.D
 Signal(s) : Signal #1: ECD1A.ch Signal #2: ECD2B.ch
 Acq On : 29 May 2021 00:08
 Operator : DD\AJ
 Sample : M2551-02MSD
 Misc :
 ALS Vial : 26 Sample Multiplier: 1

Instrument :
 ECD_S
 ClientSampleId :

Integration File signal 1: autoint1.e
 Integration File signal 2: autoint2.e
 Quant Time: May 31 01:58:37 2021
 Quant Method : Z:\pestpcbsrv\HPCHEM1\ECD_S\Method\PS052821.M
 Quant Title : 8080.M
 QLast Update : Fri May 28 14:34:22 2021
 Response via : Initial Calibration
 Integrator: ChemStation

Volume Inj. : 2 µl
 Signal #1 Phase : Rtx-CLPesticides Signal #2 Phase: Rtx-CLPesticides2
 Signal #1 Info : 30M x 0.32mm x0.5 Signal #2 Info : 30M x 0.32mm x 0.25µm

	Compound	RT#1	RT#2	Resp#1	Resp#2	ng/ml	ng/ml

System Monitoring Compounds							
4) S	2,4-DCAA	7.224	6.785	1238.5E6	257.9E6	491.384	481.351
Target Compounds							
1) T	Dalapon	3.036	2.523	1396.5E6	311.6E6	531.307	476.114
2) T	3,5-DICHL...	6.434	5.970	2052.1E6	432.1E6	595.075	534.911
3) T	4-Nitroph...	7.057	6.398	47816124	36786206	33.919	115.617 #
5) T	DICAMBA	7.417	6.951	5479.0E6	1172.3E6	574.815	529.736
6) T	MCPD	7.587	7.047	458.5E6	105.5E6	63.717	59.702
7) T	MCPA	7.735	7.259	606.8E6	170.5E6	60.455	65.622
8) T	DICHLORPROP	8.112	7.573	1436.7E6	311.9E6	623.799	574.145
9) T	2,4-D	8.339	7.863	1796.3E6	436.8E6	704.959	678.217
10) T	Pentachlo...	8.653	8.295	18313.6E6	3875.4E6	565.745	526.467
11) T	2,4,5-TP ...	9.205	8.656	8245.3E6	2069.9E6	664.355	713.290
12) T	2,4,5-T	9.488	9.034	7611.5E6	1731.5E6	633.715	598.093
13) T	2,4-DB	10.041	9.541	1078.6E6	220.6E6	423.573	571.932 #
14) T	DINOSEB	11.203	9.871	4343.2E6	959.3E6	543.608	525.295
15) T	Picloram	11.016	10.849	8005.5E6	1854.8E6	483.227	446.634
16) T	DCPA	11.472	10.805	8183.4E6	2036.9E6	485.313	472.497

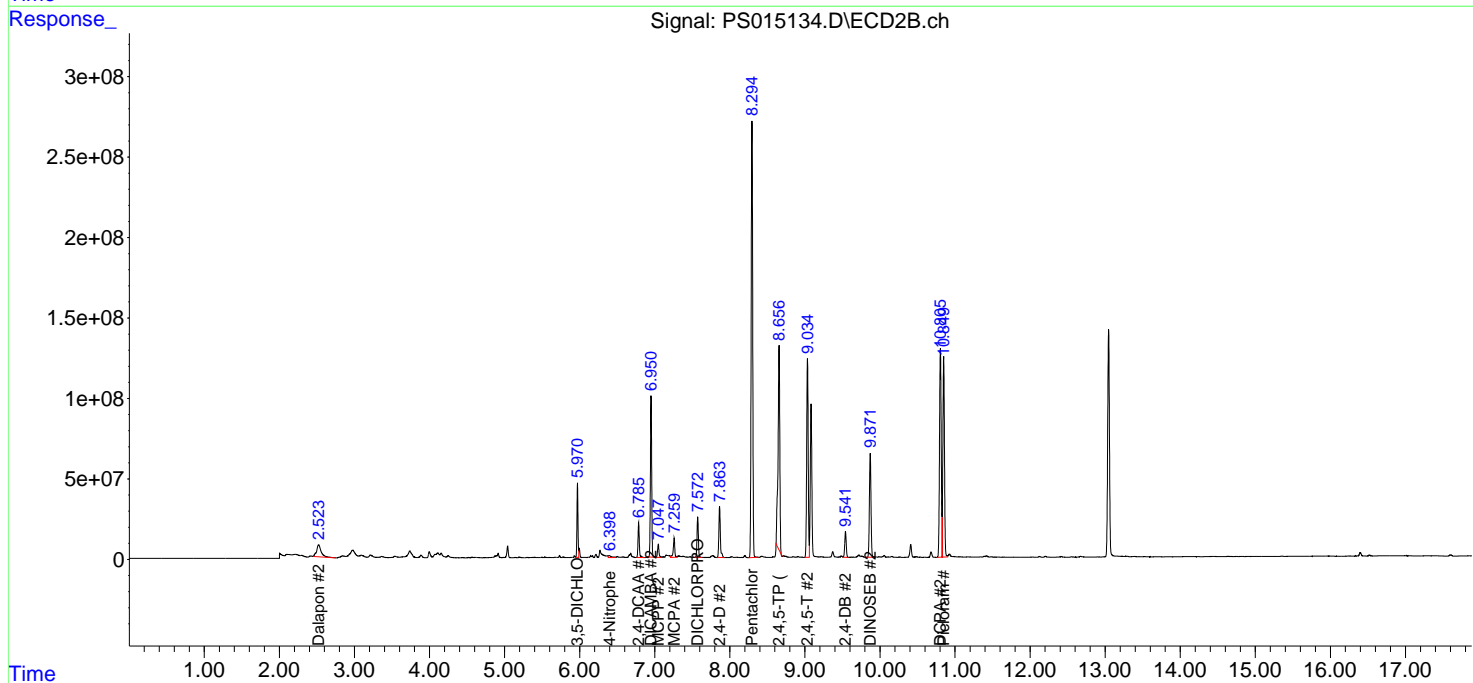
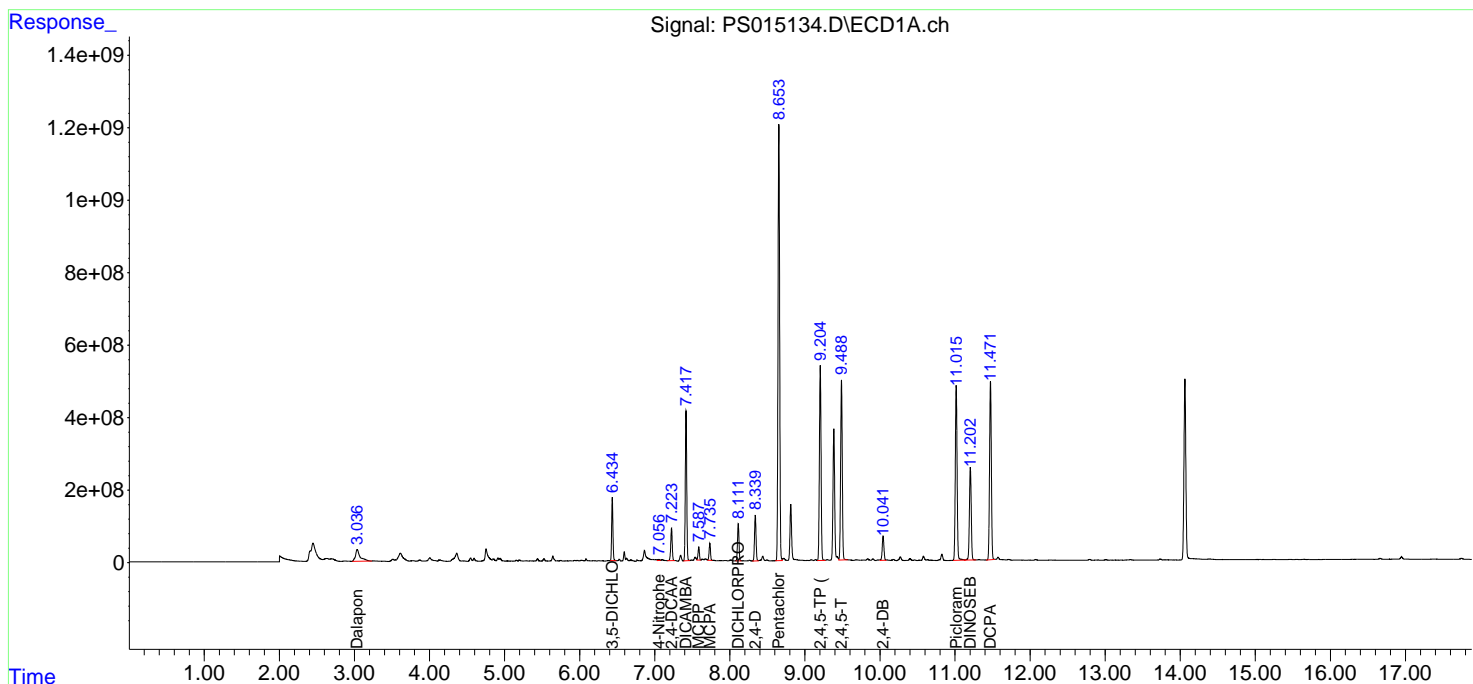
(f)=RT Delta > 1/2 Window (#)=Amounts differ by > 25% (m)=manual int.

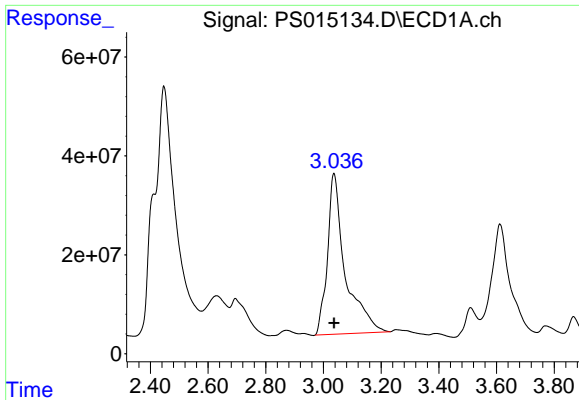
Data Path : Z:\pestpcbsrv\HPCHEM1\ECD_S\Data\PS052821\
 Data File : PS015134.D
 Signal(s) : Signal #1: ECD1A.ch Signal #2: ECD2B.ch
 Acq On : 29 May 2021 00:08
 Operator : DD\AJ
 Sample : M2551-02MSD
 Misc :
 ALS Vial : 26 Sample Multiplier: 1

Instrument :
 ECD_S
 ClientSampled :

Integration File signal 1: autoint1.e
 Integration File signal 2: autoint2.e
 Quant Time: May 31 01:58:37 2021
 Quant Method : Z:\pestpcbsrv\HPCHEM1\ECD_S\Method\PS052821.M
 Quant Title : 8080.M
 QLast Update : Fri May 28 14:34:22 2021
 Response via : Initial Calibration
 Integrator: ChemStation

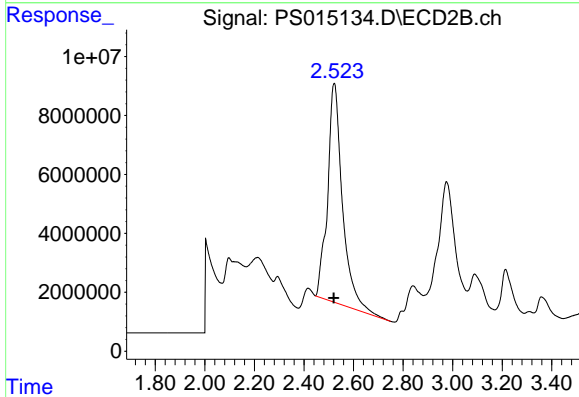
Volume Inj. : 2 µl
 Signal #1 Phase : Rtx-CLPesticides Signal #2 Phase: Rtx-CLPesticides2
 Signal #1 Info : 30M x 0.32mm x0.5 Signal #2 Info : 30M x 0.32mm x 0.25µm



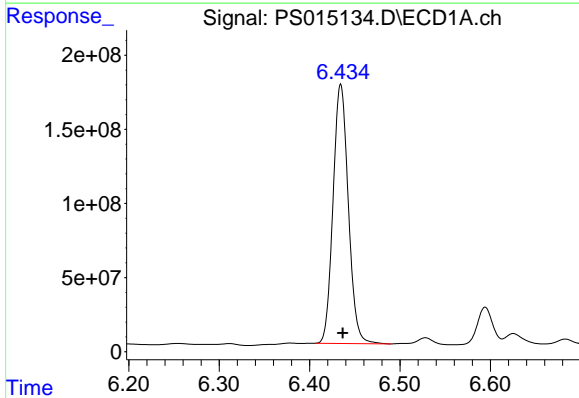


#1 Dalapon
 R.T.: 3.036 min
 Delta R.T.: 0.000 min
 Response: 1396474351
 Conc: 531.31 ng/ml

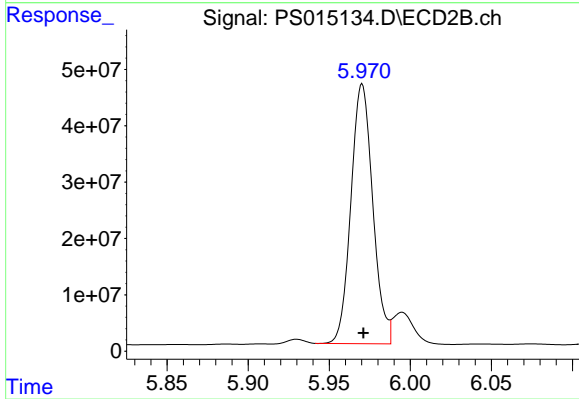
Instrument :
 ECD_S
 ClientSampled :



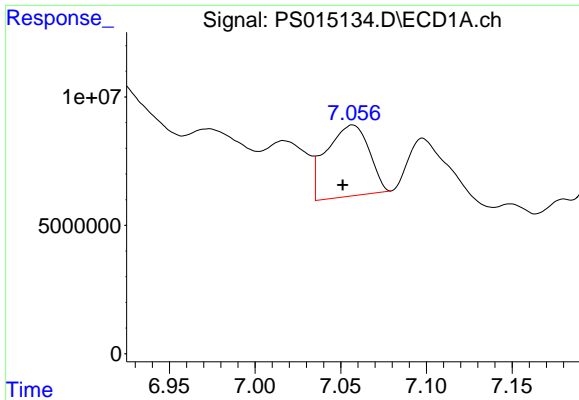
#1 Dalapon
 R.T.: 2.523 min
 Delta R.T.: 0.003 min
 Response: 311593943
 Conc: 476.11 ng/ml



#2 3,5-DICHLOROBENZOIC ACID
 R.T.: 6.434 min
 Delta R.T.: -0.002 min
 Response: 2052065171
 Conc: 595.08 ng/ml

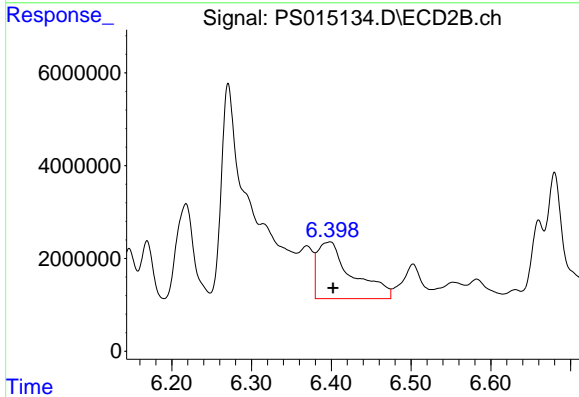


#2 3,5-DICHLOROBENZOIC ACID
 R.T.: 5.970 min
 Delta R.T.: 0.000 min
 Response: 432125069
 Conc: 534.91 ng/ml

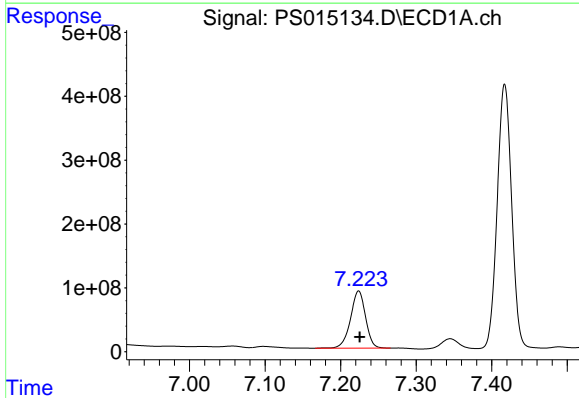


#3 4-Nitrophenol
 R.T.: 7.057 min
 Delta R.T.: 0.006 min
 Response: 47816124
 Conc: 33.92 ng/ml

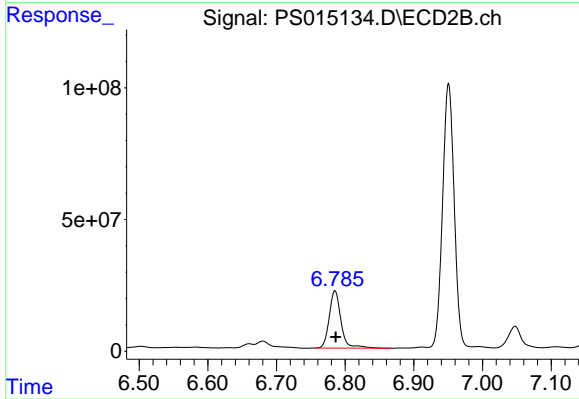
Instrument :
 ECD_S
 ClientSampled :



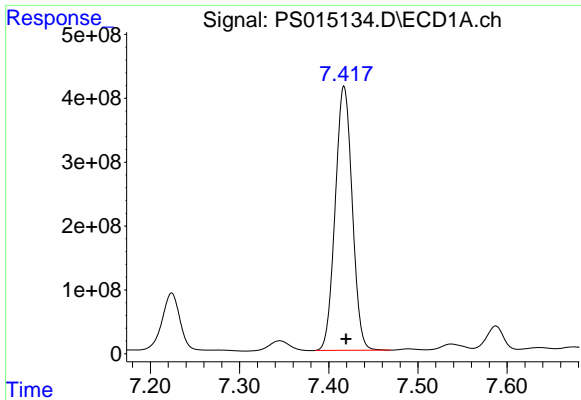
#3 4-Nitrophenol
 R.T.: 6.398 min
 Delta R.T.: -0.004 min
 Response: 36786206
 Conc: 115.62 ng/ml



#4 2,4-DCAA
 R.T.: 7.224 min
 Delta R.T.: -0.001 min
 Response: 1238472903
 Conc: 491.38 ng/ml



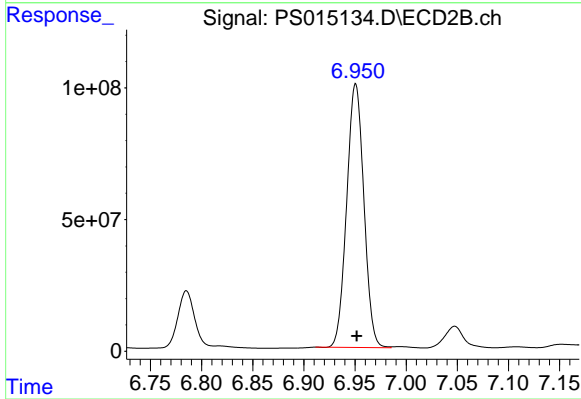
#4 2,4-DCAA
 R.T.: 6.785 min
 Delta R.T.: 0.000 min
 Response: 257893687
 Conc: 481.35 ng/ml



#5 DICAMBA

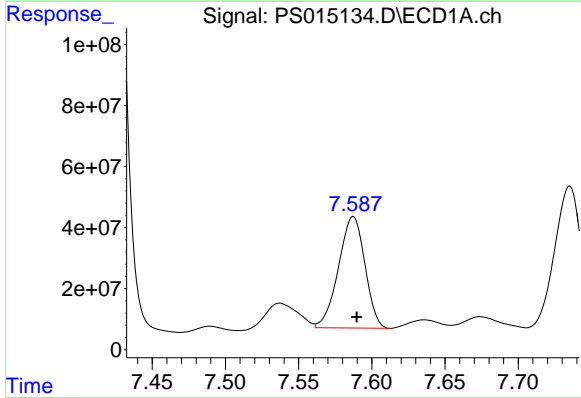
R.T.: 7.417 min
 Delta R.T.: -0.002 min
 Response: 5478990285
 Conc: 574.81 ng/ml

Instrument :
 ECD_S
 ClientSampleId :



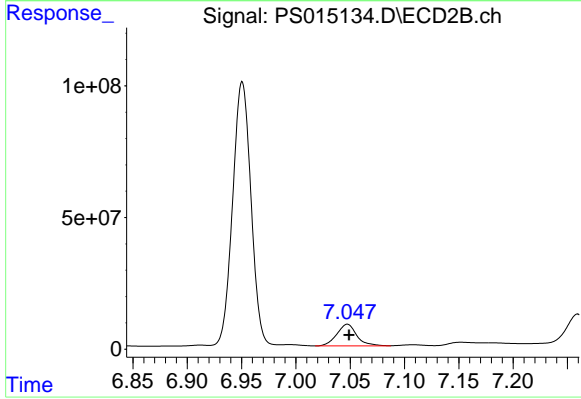
#5 DICAMBA

R.T.: 6.951 min
 Delta R.T.: -0.001 min
 Response: 1172271999
 Conc: 529.74 ng/ml



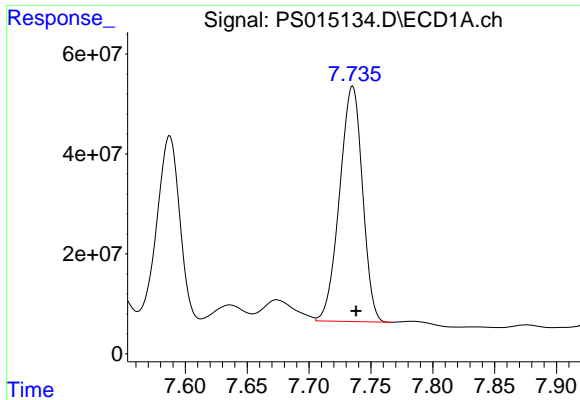
#6 MCPP

R.T.: 7.587 min
 Delta R.T.: -0.002 min
 Response: 458526908
 Conc: 63.72 ug/ml



#6 MCPP

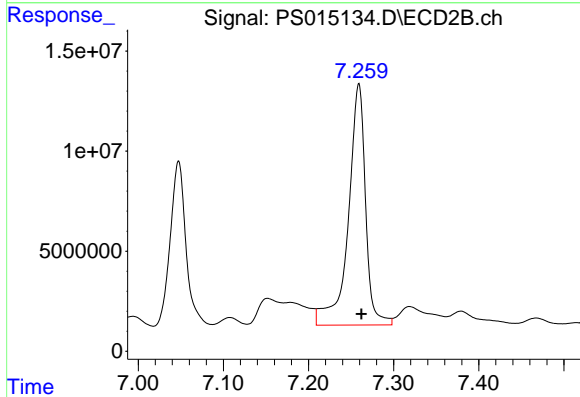
R.T.: 7.047 min
 Delta R.T.: -0.002 min
 Response: 105499696
 Conc: 59.70 ug/ml



#7 MCPA

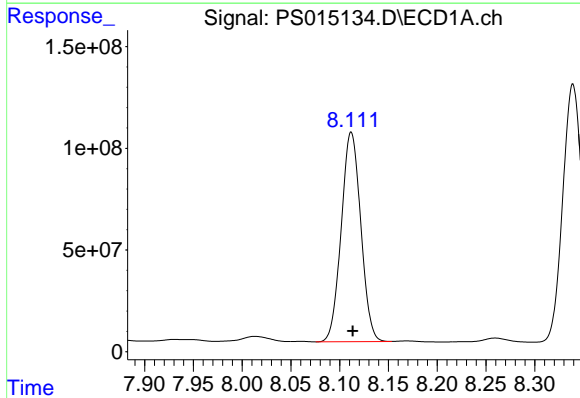
R.T.: 7.735 min
 Delta R.T.: -0.003 min
 Response: 606753550
 Conc: 60.46 ug/ml

Instrument :
 ECD_S
 ClientSampleId :



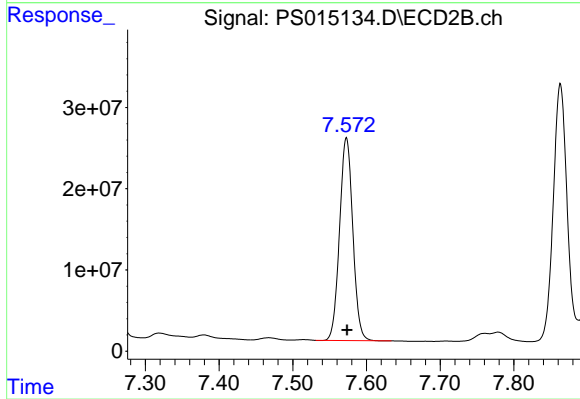
#7 MCPA

R.T.: 7.259 min
 Delta R.T.: -0.003 min
 Response: 170535534
 Conc: 65.62 ug/ml



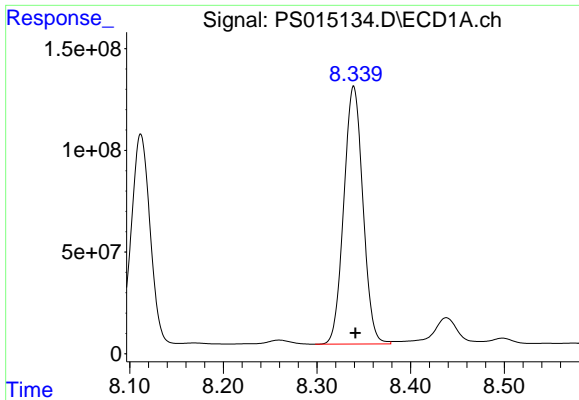
#8 DICHLORPROP

R.T.: 8.112 min
 Delta R.T.: -0.002 min
 Response: 1436672029
 Conc: 623.80 ng/ml



#8 DICHLORPROP

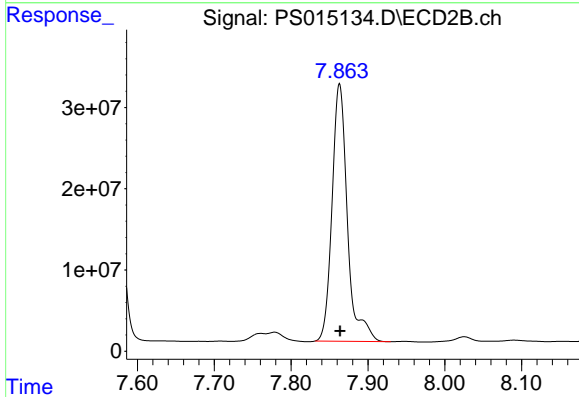
R.T.: 7.573 min
 Delta R.T.: 0.000 min
 Response: 311912340
 Conc: 574.15 ng/ml



#9 2,4-D

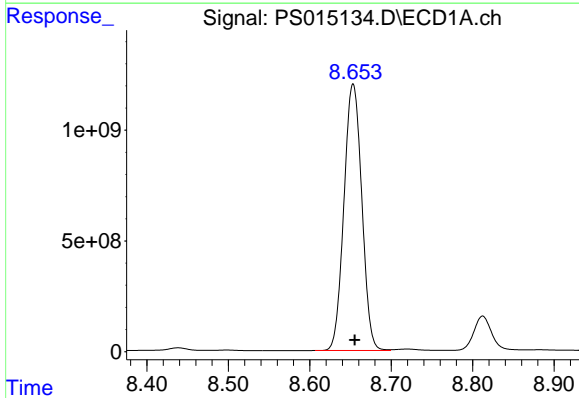
R.T.: 8.339 min
Delta R.T.: -0.002 min
Response: 1796316935
Conc: 704.96 ng/ml

Instrument :
ECD_S
ClientSampleId :



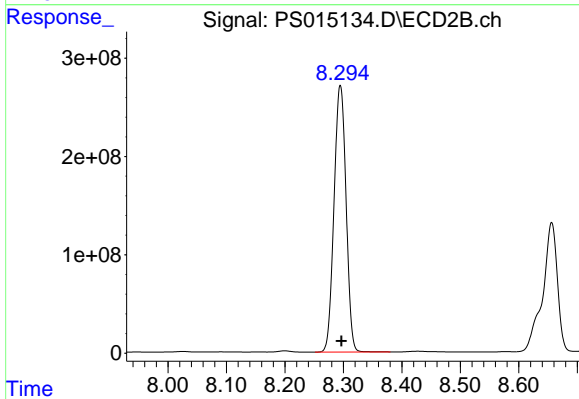
#9 2,4-D

R.T.: 7.863 min
Delta R.T.: 0.000 min
Response: 436788926
Conc: 678.22 ng/ml



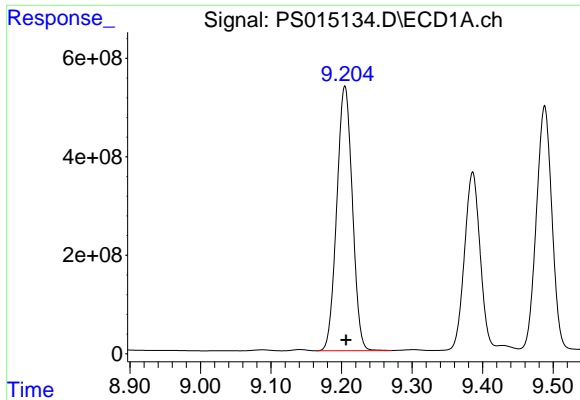
#10 Pentachlorophenol

R.T.: 8.653 min
Delta R.T.: -0.002 min
Response: 18313607291
Conc: 565.74 ng/ml



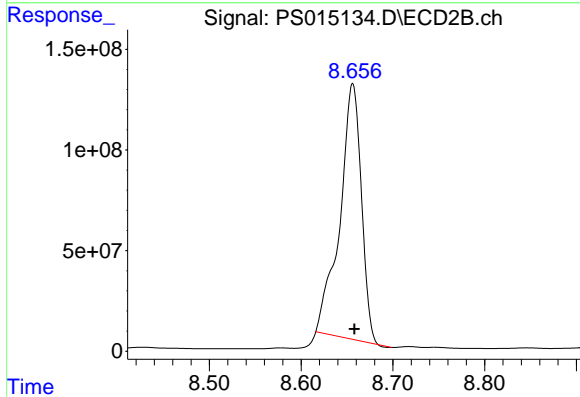
#10 Pentachlorophenol

R.T.: 8.295 min
Delta R.T.: -0.002 min
Response: 3875429015
Conc: 526.47 ng/ml

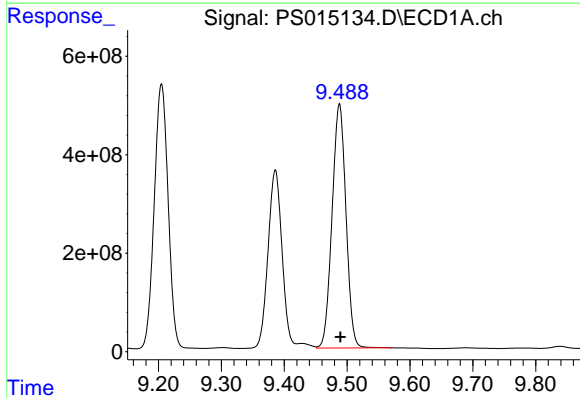


#11 2,4,5-TP (SILVEX)
 R.T.: 9.205 min
 Delta R.T.: -0.002 min
 Response: 8245310341
 Conc: 664.35 ng/ml

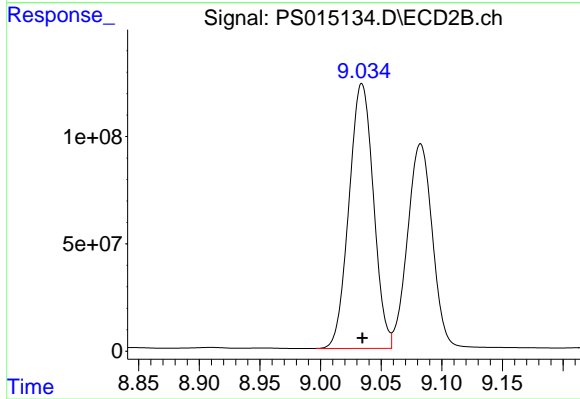
Instrument :
 ECD_S
 ClientSampled :



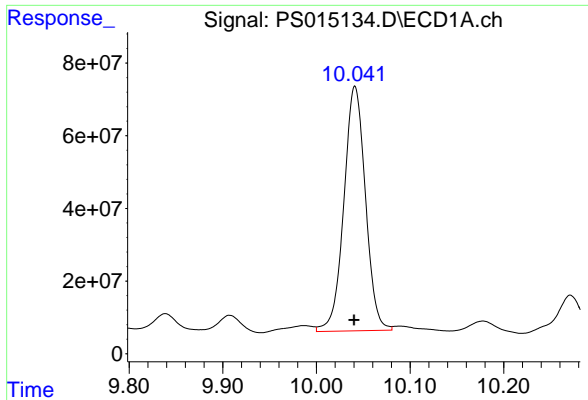
#11 2,4,5-TP (SILVEX)
 R.T.: 8.656 min
 Delta R.T.: -0.002 min
 Response: 2069923424
 Conc: 713.29 ng/ml



#12 2,4,5-T
 R.T.: 9.488 min
 Delta R.T.: -0.001 min
 Response: 7611490369
 Conc: 633.72 ng/ml

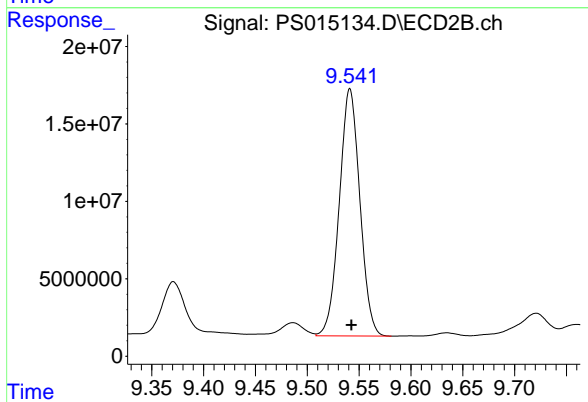


#12 2,4,5-T
 R.T.: 9.034 min
 Delta R.T.: 0.000 min
 Response: 1731480197
 Conc: 598.09 ng/ml

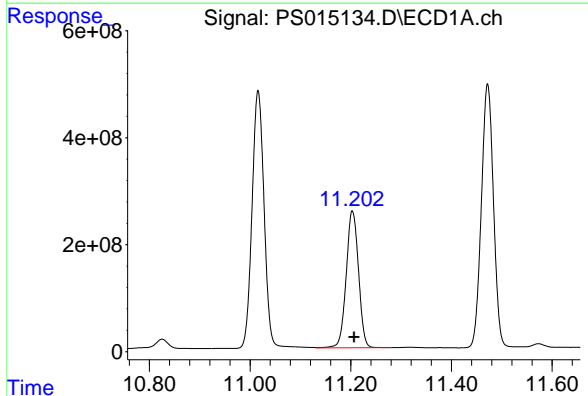


#13 2,4-DB
R.T.: 10.041 min
Delta R.T.: 0.000 min
Response: 1078638922
Conc: 423.57 ng/ml

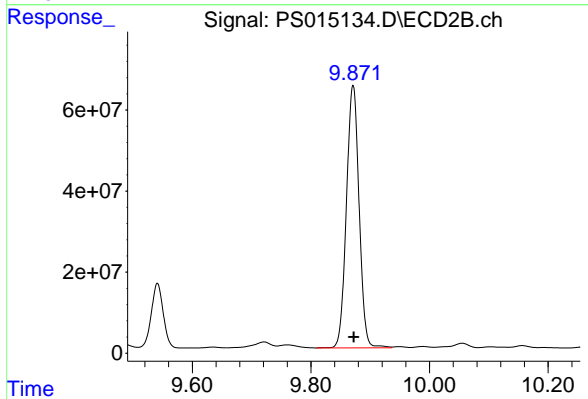
Instrument :
ECD_S
ClientSampleId :



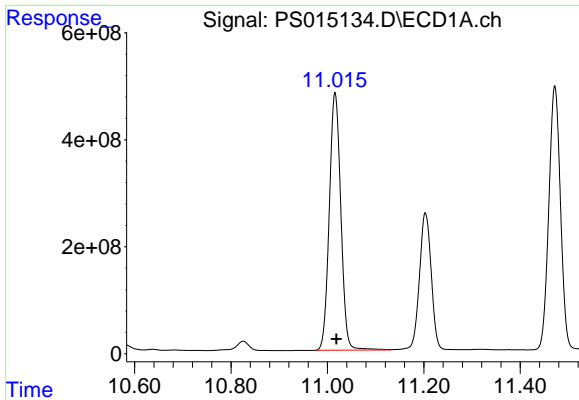
#13 2,4-DB
R.T.: 9.541 min
Delta R.T.: -0.001 min
Response: 220622429
Conc: 571.93 ng/ml



#14 DINOSEB
R.T.: 11.203 min
Delta R.T.: -0.003 min
Response: 4343197694
Conc: 543.61 ng/ml

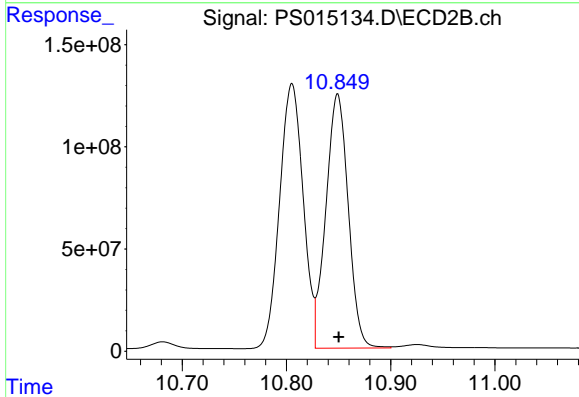


#14 DINOSEB
R.T.: 9.871 min
Delta R.T.: -0.001 min
Response: 959262799
Conc: 525.29 ng/ml

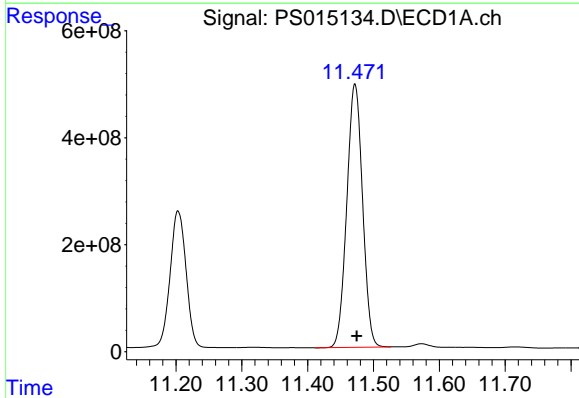


#15 Picloram
 R.T.: 11.016 min
 Delta R.T.: -0.003 min
 Response: 8005520359
 Conc: 483.23 ng/ml

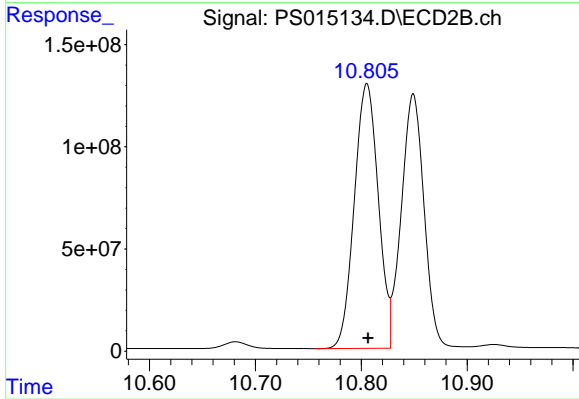
Instrument :
 ECD_S
 ClientSampled :



#15 Picloram
 R.T.: 10.849 min
 Delta R.T.: 0.000 min
 Response: 1854822988
 Conc: 446.63 ng/ml



#16 DCPA
 R.T.: 11.472 min
 Delta R.T.: -0.003 min
 Response: 8183390908
 Conc: 485.31 ng/ml



#16 DCPA
 R.T.: 10.805 min
 Delta R.T.: -0.001 min
 Response: 2036932111
 Conc: 472.50 ng/ml