

Data Path : Z:\pestpcbsrv\HPCHEM1\ECD_S\Data\PS052821\
 Data File : PS015138.D
 Signal(s) : Signal #1: ECD1A.ch Signal #2: ECD2B.ch
 Acq On : 29 May 2021 01:44
 Operator : DD\AJ
 Sample : HSTDCCC750
 Misc :
 ALS Vial : 3 Sample Multiplier: 1

Instrument :
 ECD_S
 ClientSampleId :

Integration File signal 1: autoint1.e
 Integration File signal 2: autoint2.e
 Quant Time: May 31 02:00:03 2021
 Quant Method : Z:\pestpcbsrv\HPCHEM1\ECD_S\Method\PS052821.M
 Quant Title : 8080.M
 QLast Update : Fri May 28 14:34:22 2021
 Response via : Initial Calibration
 Integrator: ChemStation

Volume Inj. : 2 µl
 Signal #1 Phase : Rtx-CLPesticides Signal #2 Phase: Rtx-CLPesticides2
 Signal #1 Info : 30M x 0.32mm x0.5 Signal #2 Info : 30M x 0.32mm x 0.25µm

	Compound	RT#1	RT#2	Resp#1	Resp#2	ng/ml	ng/ml

System Monitoring Compounds							
4) S	2,4-DCAA	7.224	6.785	2009.2E6	398.0E6	797.172	742.877
Target Compounds							
1) T	Dalapon	3.038	2.521	1847.0E6	442.9E6	702.715	676.679
2) T	3,5-DICHL...	6.435	5.970	2550.2E6	559.5E6	739.517	692.610
3) T	4-Nitroph...	7.049	6.401	1067.4E6	218.0E6	757.216	685.200
5) T	DICAMBA	7.417	6.951	7239.5E6	1576.7E6	759.511	712.500
6) T	MCP P	7.589	7.049	577.2E6	127.5E6	80.211	72.170
7) T	MCPA	7.737	7.262	786.1E6	183.4E6	78.322	70.583
8) T	DICHLORPROP	8.112	7.573	1745.8E6	383.2E6	758.023	705.360
9) T	2,4-D	8.340	7.863	1932.8E6	454.4E6	758.512	705.556
10) T	Pentachlo...	8.654	8.296	24394.4E6	5254.6E6	753.593	713.827
11) T	2,4,5-TP ...	9.205	8.657	9399.8E6	2083.8E6	757.374	718.067
12) T	2,4,5-T	9.487	9.034	9210.2E6	2100.0E6	766.823	725.374
13) T	2,4-DB	10.038	9.541	1993.7E6	277.0E6	782.916	717.969
14) T	DINOSEB	11.204	9.871	6521.0E6	1450.9E6	816.184	794.497
15) T	Picloram	11.016	10.849	12771.1E6	3013.8E6	770.886	725.699
16) T	DCPA	11.472	10.806	12991.0E6	3124.1E6	770.426	724.682

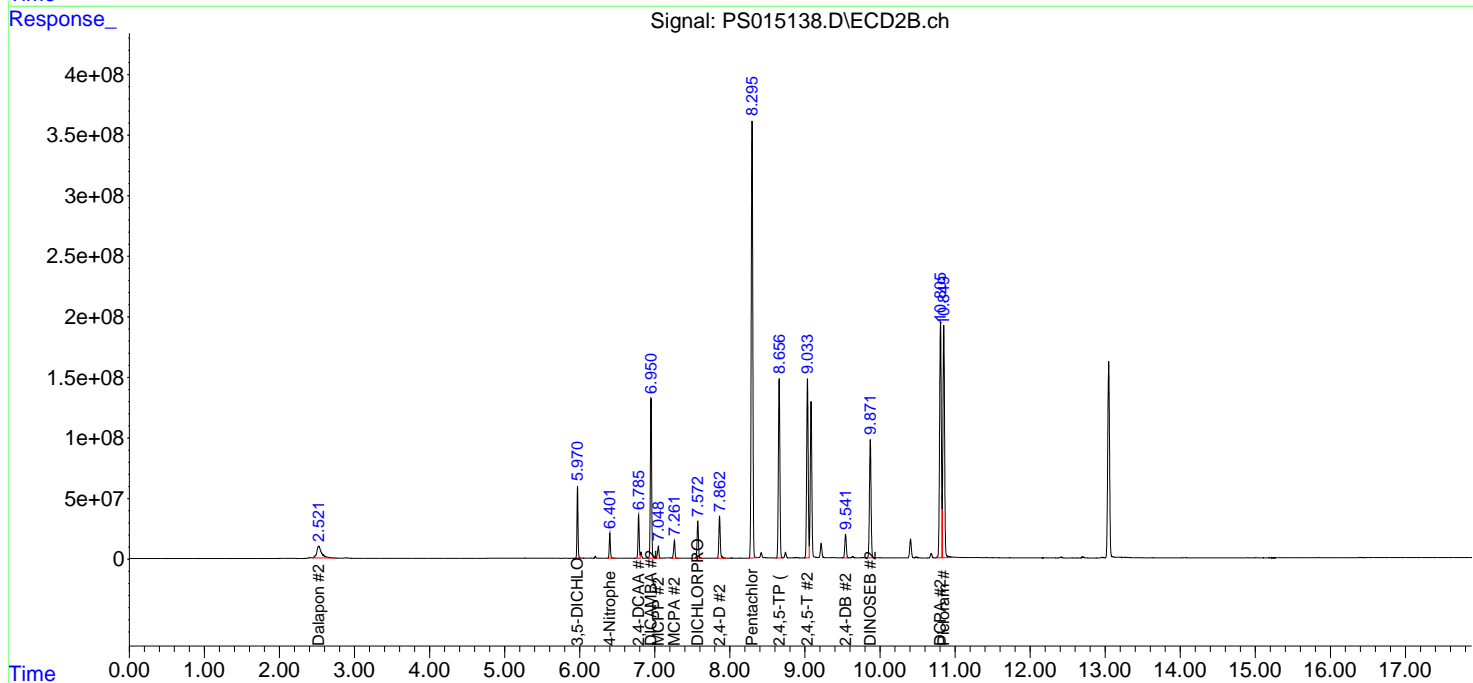
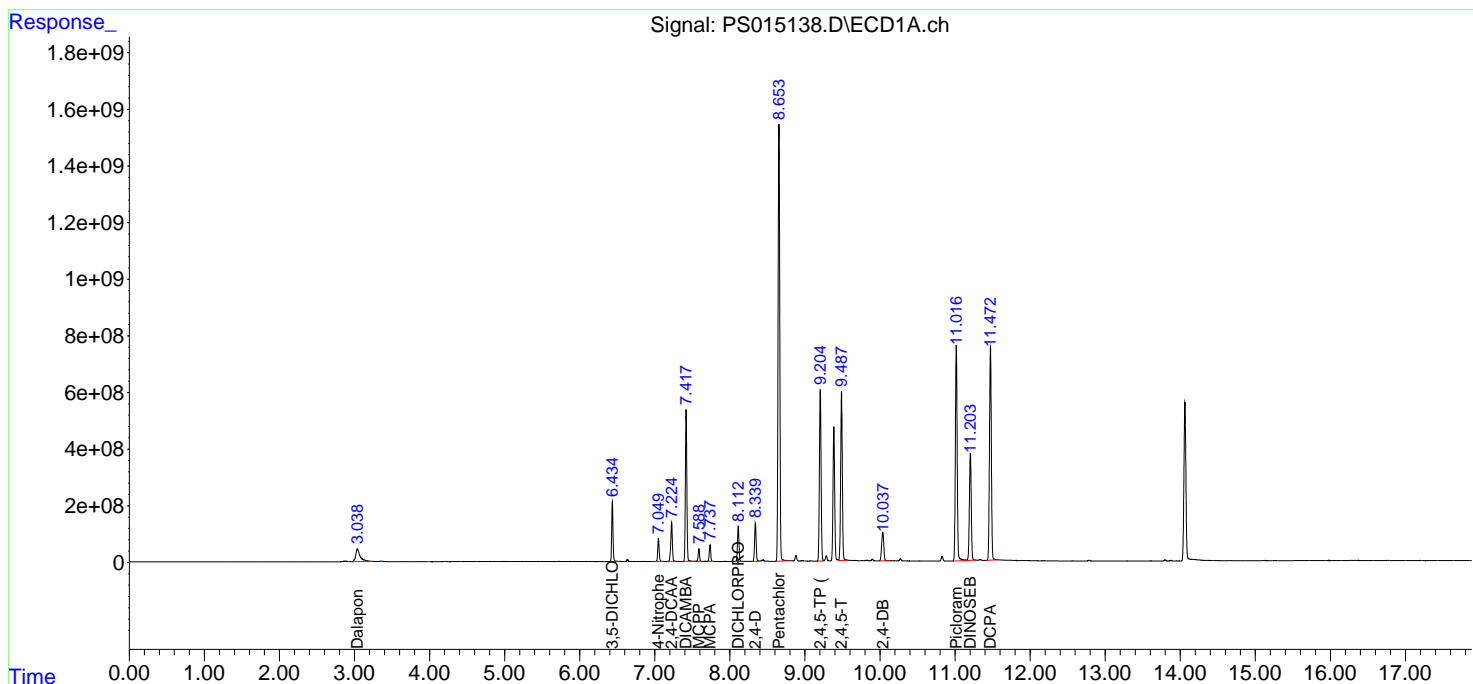
(f)=RT Delta > 1/2 Window (#)=Amounts differ by > 25% (m)=manual int.

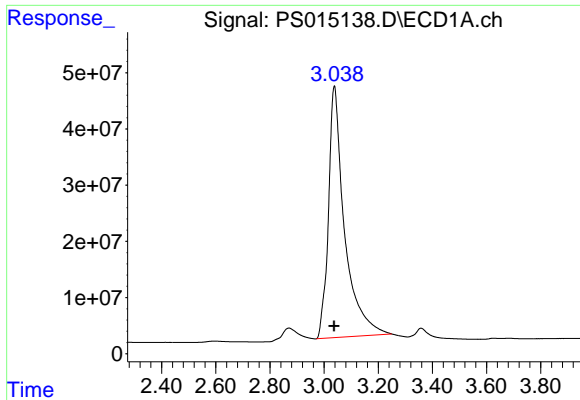
Data Path : Z:\pestpcbsrv\HPCHEM1\ECD_S\Data\PS052821\
 Data File : PS015138.D
 Signal(s) : Signal #1: ECD1A.ch Signal #2: ECD2B.ch
 Acq On : 29 May 2021 01:44
 Operator : DD\AJ
 Sample : HSTDCCC750
 Misc :
 ALS Vial : 3 Sample Multiplier: 1

Instrument :
 ECD_S
 ClientSampled :

Integration File signal 1: autoint1.e
 Integration File signal 2: autoint2.e
 Quant Time: May 31 02:00:03 2021
 Quant Method : Z:\pestpcbsrv\HPCHEM1\ECD_S\Method\PS052821.M
 Quant Title : 8080.M
 QLast Update : Fri May 28 14:34:22 2021
 Response via : Initial Calibration
 Integrator: ChemStation

Volume Inj. : 2 µl
 Signal #1 Phase : Rtx-CLPesticides Signal #2 Phase: Rtx-CLPesticides2
 Signal #1 Info : 30M x 0.32mm x0.5 Signal #2 Info : 30M x 0.32mm x 0.25µm

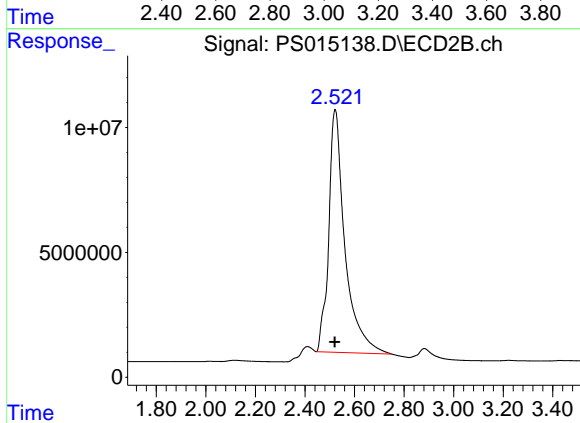




#1 Dalapon

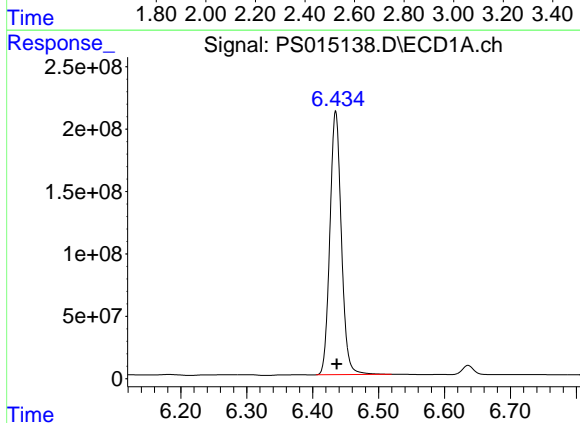
R.T.: 3.038 min
Delta R.T.: 0.001 min
Response: 1846999546
Conc: 702.71 ng/ml

Instrument :
ECD_S
ClientSampleId :



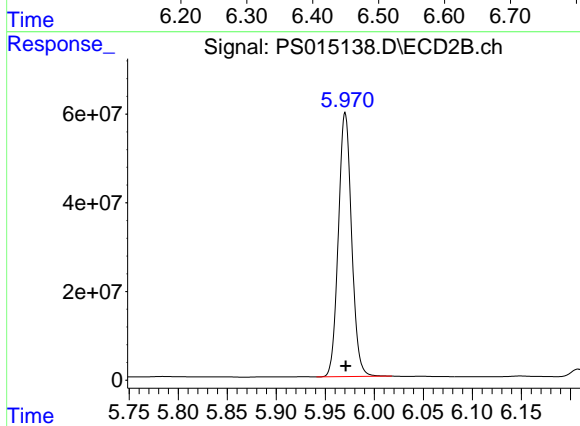
#1 Dalapon

R.T.: 2.521 min
Delta R.T.: 0.001 min
Response: 442854201
Conc: 676.68 ng/ml



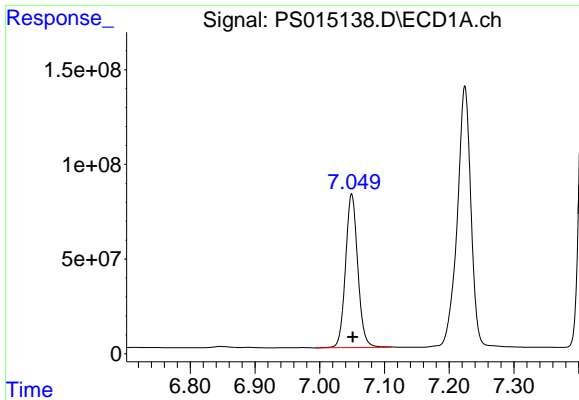
#2 3,5-DICHLOROBENZOIC ACID

R.T.: 6.435 min
Delta R.T.: -0.002 min
Response: 2550160240
Conc: 739.52 ng/ml



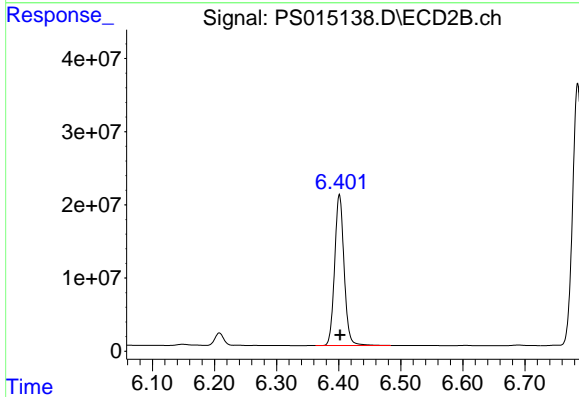
#2 3,5-DICHLOROBENZOIC ACID

R.T.: 5.970 min
Delta R.T.: 0.000 min
Response: 559520978
Conc: 692.61 ng/ml

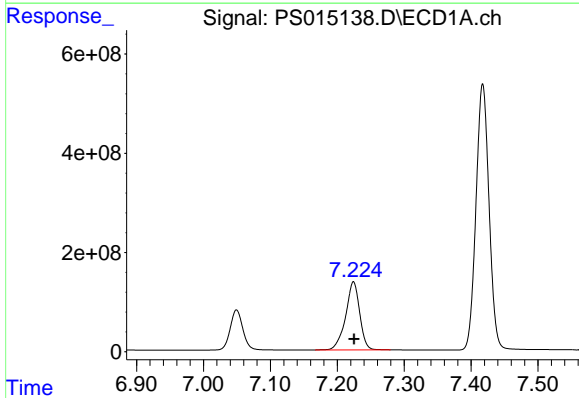


#3 4-Nitrophenol
 R.T.: 7.049 min
 Delta R.T.: -0.002 min
 Response: 1067445926
 Conc: 757.22 ng/ml

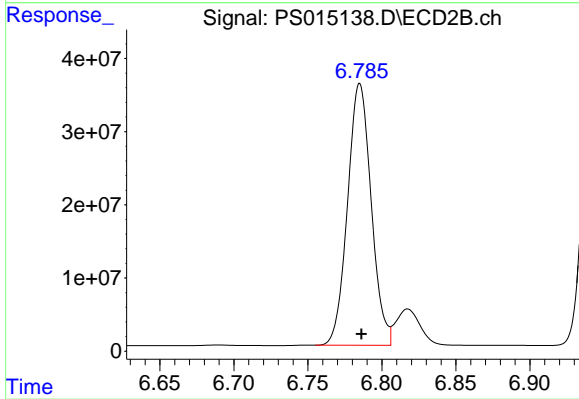
Instrument :
 ECD_S
 ClientSampled :



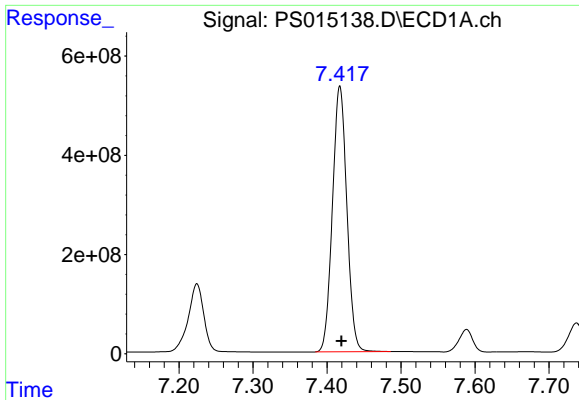
#3 4-Nitrophenol
 R.T.: 6.401 min
 Delta R.T.: 0.000 min
 Response: 218012970
 Conc: 685.20 ng/ml



#4 2,4-DCAA
 R.T.: 7.224 min
 Delta R.T.: 0.000 min
 Response: 2009171379
 Conc: 797.17 ng/ml



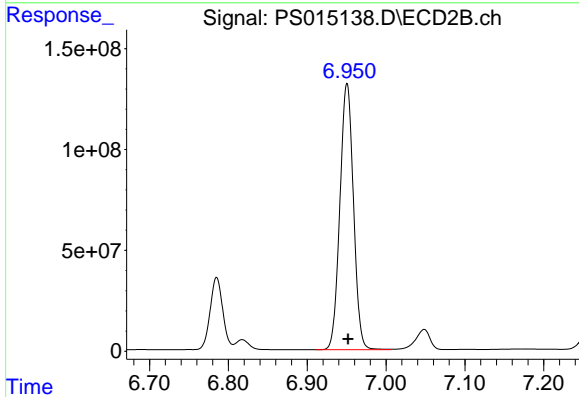
#4 2,4-DCAA
 R.T.: 6.785 min
 Delta R.T.: -0.001 min
 Response: 398012137
 Conc: 742.88 ng/ml



#5 DICAMBA

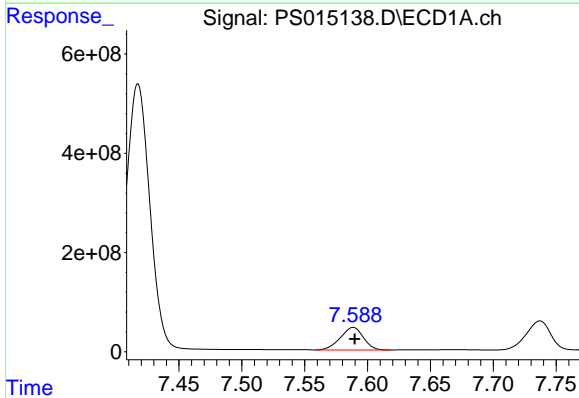
R.T.: 7.417 min
 Delta R.T.: -0.002 min
 Response: 7239473509
 Conc: 759.51 ng/ml

Instrument :
 ECD_S
 ClientSampled :



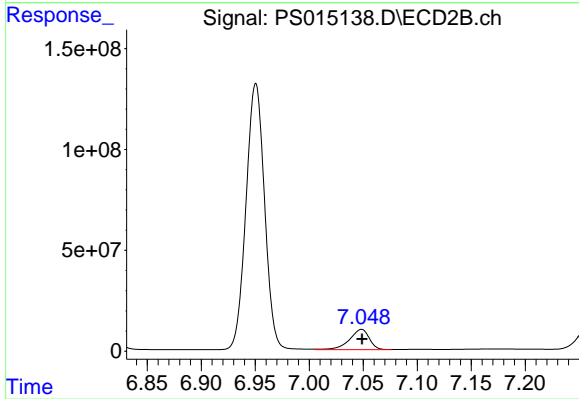
#5 DICAMBA

R.T.: 6.951 min
 Delta R.T.: -0.001 min
 Response: 1576717828
 Conc: 712.50 ng/ml



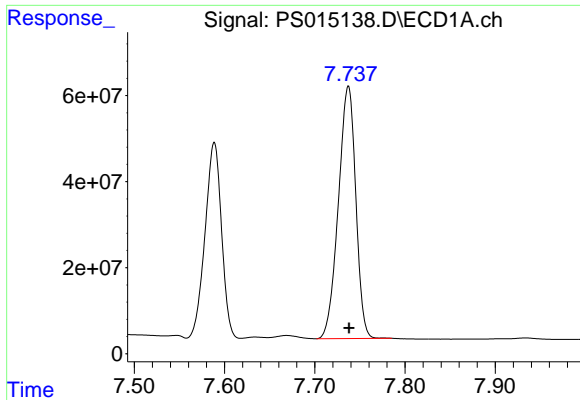
#6 MCP

R.T.: 7.589 min
 Delta R.T.: -0.001 min
 Response: 577221516
 Conc: 80.21 ug/ml



#6 MCP

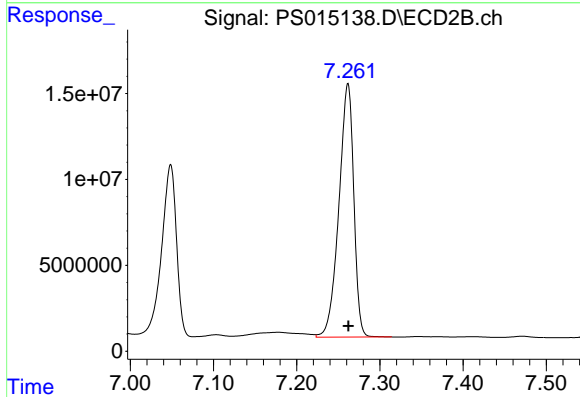
R.T.: 7.049 min
 Delta R.T.: 0.000 min
 Response: 127531253
 Conc: 72.17 ug/ml



#7 MCPA

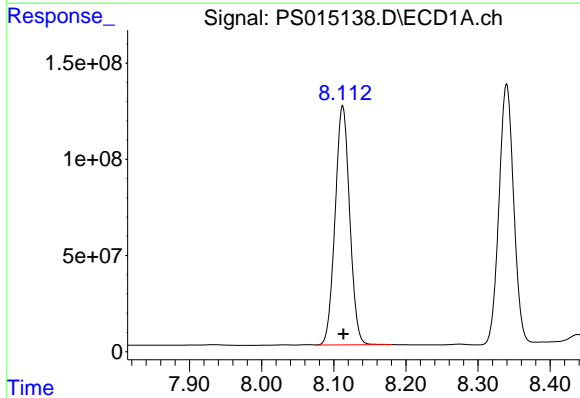
R.T.: 7.737 min
 Delta R.T.: 0.000 min
 Response: 786076981
 Conc: 78.32 ug/ml

Instrument :
 ECD_S
 ClientSampled :



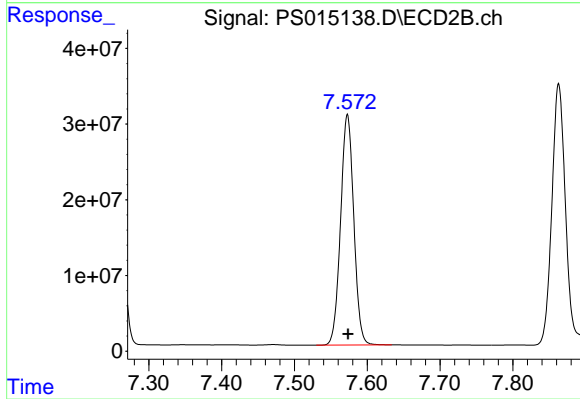
#7 MCPA

R.T.: 7.262 min
 Delta R.T.: 0.000 min
 Response: 183429421
 Conc: 70.58 ug/ml



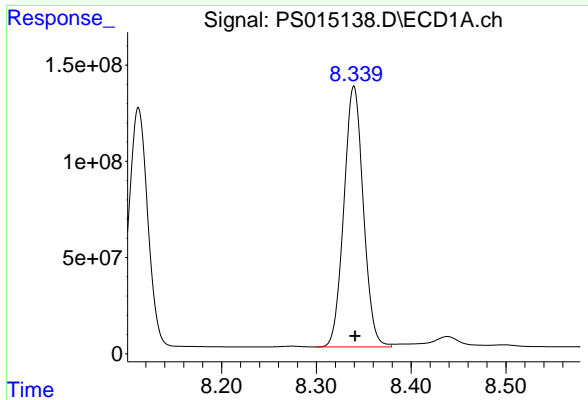
#8 DICHLORPROP

R.T.: 8.112 min
 Delta R.T.: -0.001 min
 Response: 1745803861
 Conc: 758.02 ng/ml



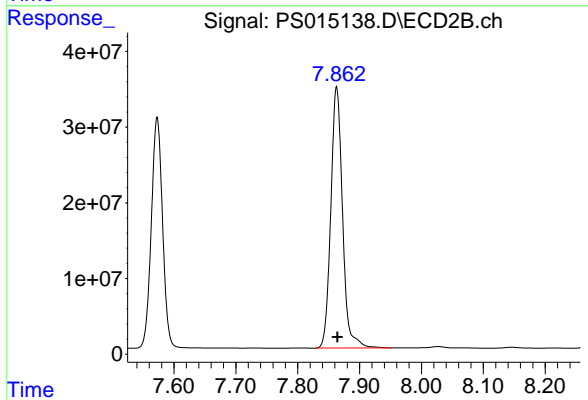
#8 DICHLORPROP

R.T.: 7.573 min
 Delta R.T.: 0.000 min
 Response: 383196618
 Conc: 705.36 ng/ml

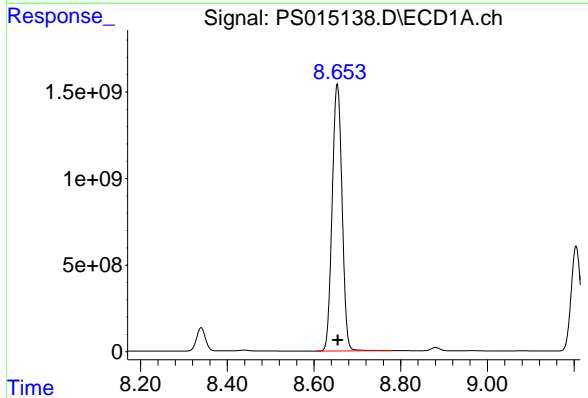


#9 2,4-D
 R.T.: 8.340 min
 Delta R.T.: -0.001 min
 Response: 1932777395
 Conc: 758.51 ng/ml

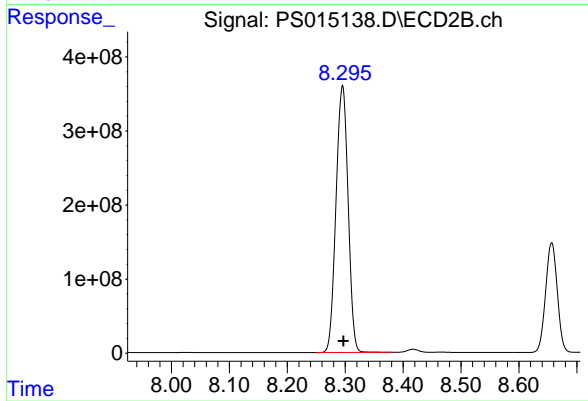
Instrument :
 ECD_S
 ClientSampled :



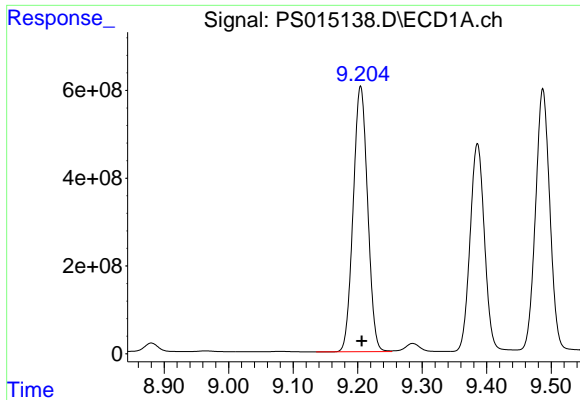
#9 2,4-D
 R.T.: 7.863 min
 Delta R.T.: -0.001 min
 Response: 454396216
 Conc: 705.56 ng/ml



#10 Pentachlorophenol
 R.T.: 8.654 min
 Delta R.T.: -0.002 min
 Response: 24394402704
 Conc: 753.59 ng/ml



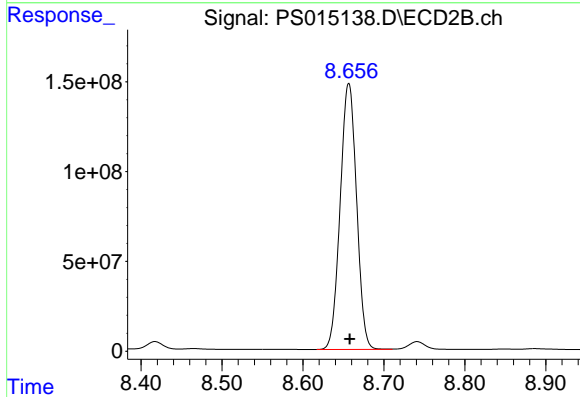
#10 Pentachlorophenol
 R.T.: 8.296 min
 Delta R.T.: -0.001 min
 Response: 5254621782
 Conc: 713.83 ng/ml



#11 2,4,5-TP (SILVEX)

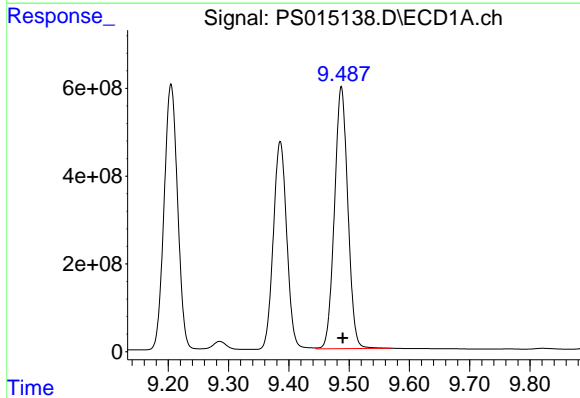
R.T.: 9.205 min
 Delta R.T.: -0.002 min
 Response: 9399773699
 Conc: 757.37 ng/ml

Instrument :
 ECD_S
 ClientSampleId :



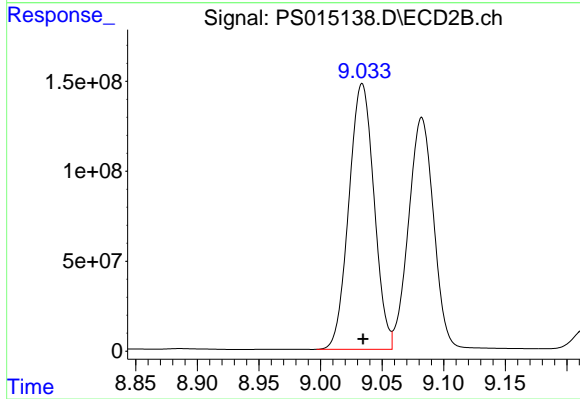
#11 2,4,5-TP (SILVEX)

R.T.: 8.657 min
 Delta R.T.: -0.001 min
 Response: 2083785534
 Conc: 718.07 ng/ml



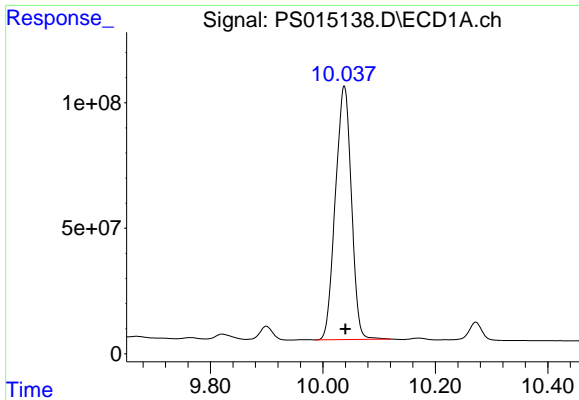
#12 2,4,5-T

R.T.: 9.487 min
 Delta R.T.: -0.002 min
 Response: 9210234168
 Conc: 766.82 ng/ml



#12 2,4,5-T

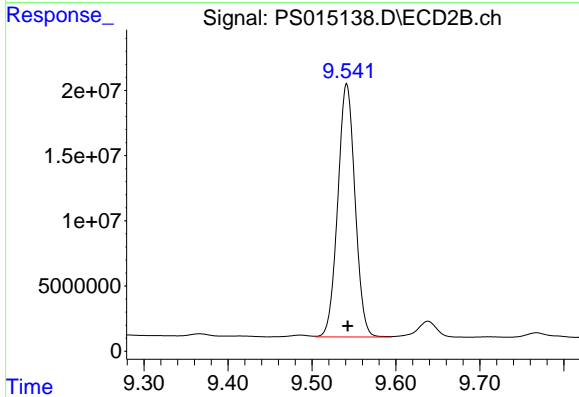
R.T.: 9.034 min
 Delta R.T.: 0.000 min
 Response: 2099957273
 Conc: 725.37 ng/ml



#13 2,4-DB

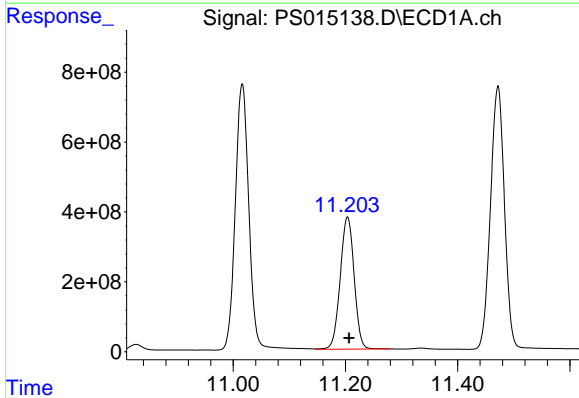
R.T.: 10.038 min
 Delta R.T.: -0.002 min
 Response: 1993716687
 Conc: 782.92 ng/ml

Instrument :
 ECD_S
 ClientSampled :



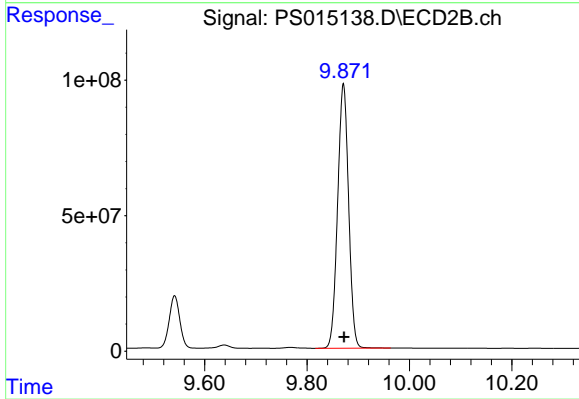
#13 2,4-DB

R.T.: 9.541 min
 Delta R.T.: -0.001 min
 Response: 276956066
 Conc: 717.97 ng/ml



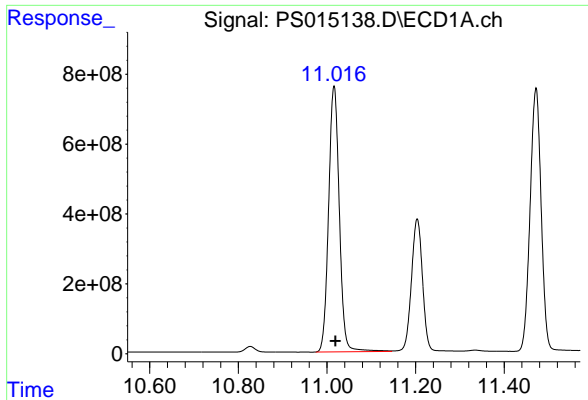
#14 DINOSEB

R.T.: 11.204 min
 Delta R.T.: -0.003 min
 Response: 6520958367
 Conc: 816.18 ng/ml



#14 DINOSEB

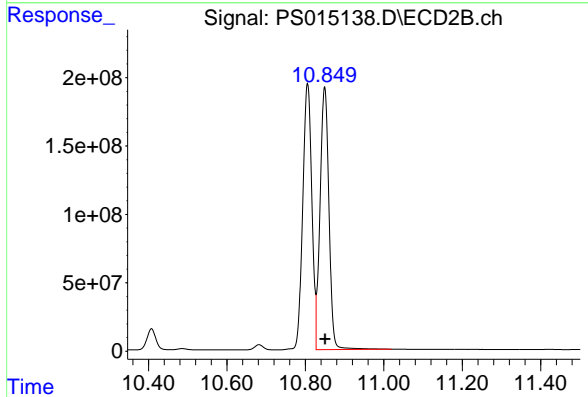
R.T.: 9.871 min
 Delta R.T.: -0.001 min
 Response: 1450864480
 Conc: 794.50 ng/ml



#15 Picloram

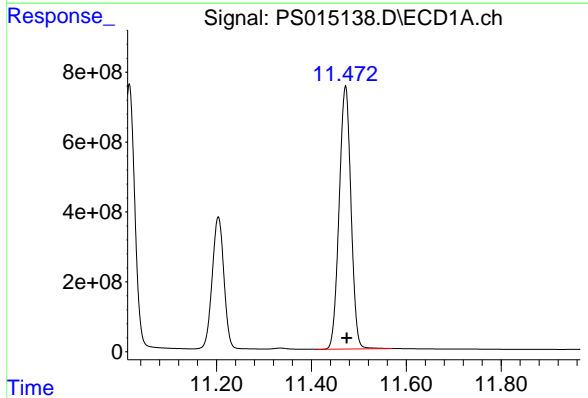
R.T.: 11.016 min
 Delta R.T.: -0.003 min
 Response: 12771104691
 Conc: 770.89 ng/ml

Instrument :
 ECD_S
 ClientSampled :



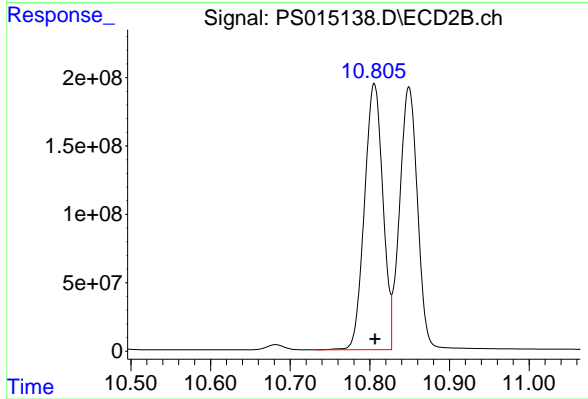
#15 Picloram

R.T.: 10.849 min
 Delta R.T.: -0.001 min
 Response: 3013752399
 Conc: 725.70 ng/ml



#16 DCPA

R.T.: 11.472 min
 Delta R.T.: -0.003 min
 Response: 12990987748
 Conc: 770.43 ng/ml



#16 DCPA

R.T.: 10.806 min
 Delta R.T.: 0.000 min
 Response: 3124100138
 Conc: 724.68 ng/ml