

Data Path : Z:\pestpcbsrv\HPCHEM1\ECD_S\Data\PS052821\
 Data File : PS015139.D
 Signal(s) : Signal #1: ECD1A.ch Signal #2: ECD2B.ch
 Acq On : 29 May 2021 02:08
 Operator : DD\AJ
 Sample : M2560-02
 Misc :
 ALS Vial : 29 Sample Multiplier: 1

Instrument :
 ECD_S
 ClientSampleId :

Integration File signal 1: autoint1.e
 Integration File signal 2: autoint2.e
 Quant Time: May 31 02:00:24 2021
 Quant Method : Z:\pestpcbsrv\HPCHEM1\ECD_S\Method\PS052821.M
 Quant Title : 8080.M
 QLast Update : Fri May 28 14:34:22 2021
 Response via : Initial Calibration
 Integrator: ChemStation

Volume Inj. : 2 µl
 Signal #1 Phase : Rtx-CLPesticides Signal #2 Phase: Rtx-CLPesticides2
 Signal #1 Info : 30M x 0.32mm x0.5 Signal #2 Info : 30M x 0.32mm x 0.25µm

Compound	RT#1	RT#2	Resp#1	Resp#2	ng/ml	ng/ml

System Monitoring Compounds						
4) S 2,4-DCAA	7.223	6.785	1348.3E6	278.3E6	534.960	519.361
Target Compounds						
1) T Dalapon	3.002	2.483	65247870	22546348	24.824	34.451 #
2) T 3,5-DICHL...	6.468	5.995	2786540	69870816	<MDL	86.490 #
3) T 4-Nitroph...	7.061	6.389	23443476	9301363	16.630	29.234 #
5) T DICAMBA	7.404	6.996f	23263748	5573172	2.441	2.518
6) T MCPP	7.587	6.996f	12172957	5573172	1.692	3.154 #
7) T MCPA	7.775	0.000	3056955	0	<MDL	N.D. #
8) T DICHLORPROP	8.097	7.592	20329550	9791296	8.827	18.023 #
9) T 2,4-D	0.000	7.852	0	9333845	N.D.	14.493
10) T Pentachlo...	8.652	8.280	4806509	9812210	<MDL	1.333 #
11) T 2,4,5-TP ...	9.203	8.612f	4815794	-850345	<MDL	N.D. #
12) T 2,4,5-T	9.431f	9.044	117.9E6	3661475	9.814	1.265 #
13) T 2,4-DB	10.017	0.000	106.1E6	0	41.666	N.D. #
14) T DINOSEB	11.167	9.884	42438497	7577001	5.312	4.149
15) T Picloram	11.016	10.849	121.5E6	21930238	7.333	5.281 #
16) T DCPA	11.486	10.849f	8138571	21930238	<MDL	5.087 #

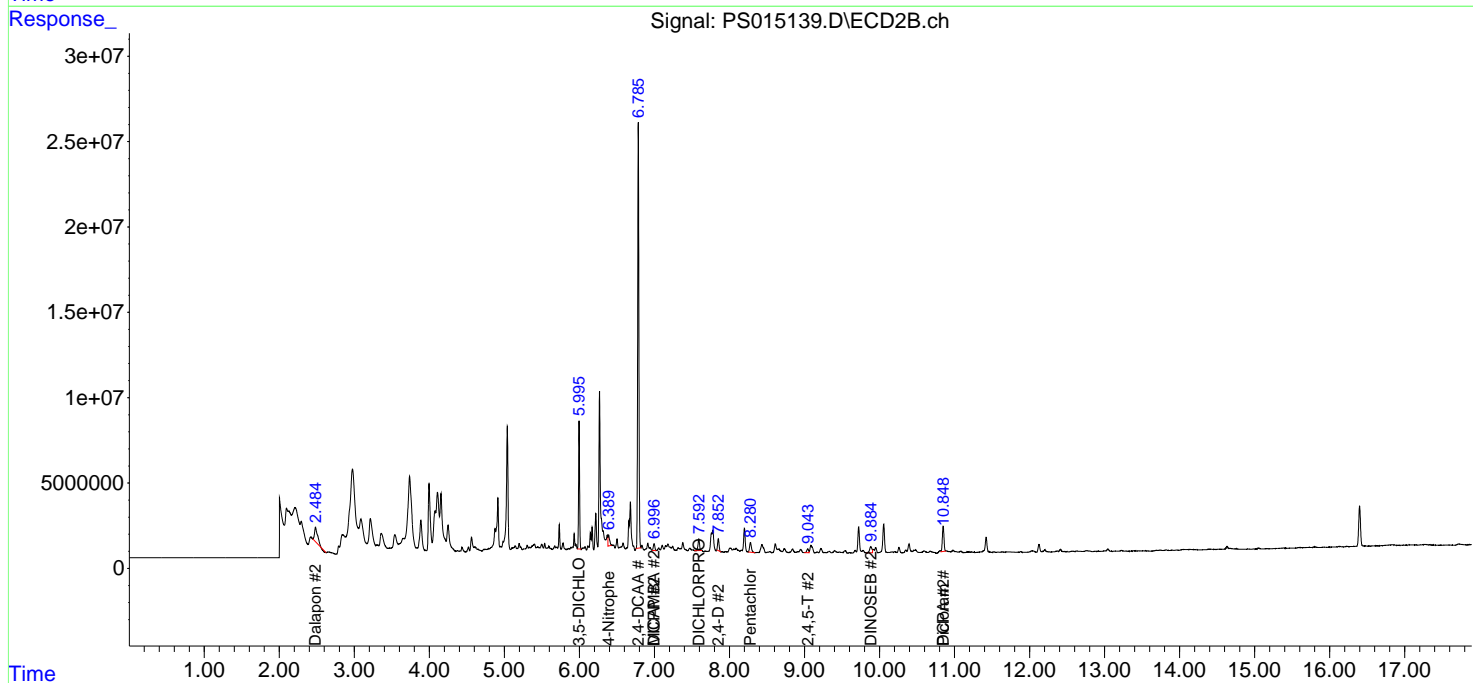
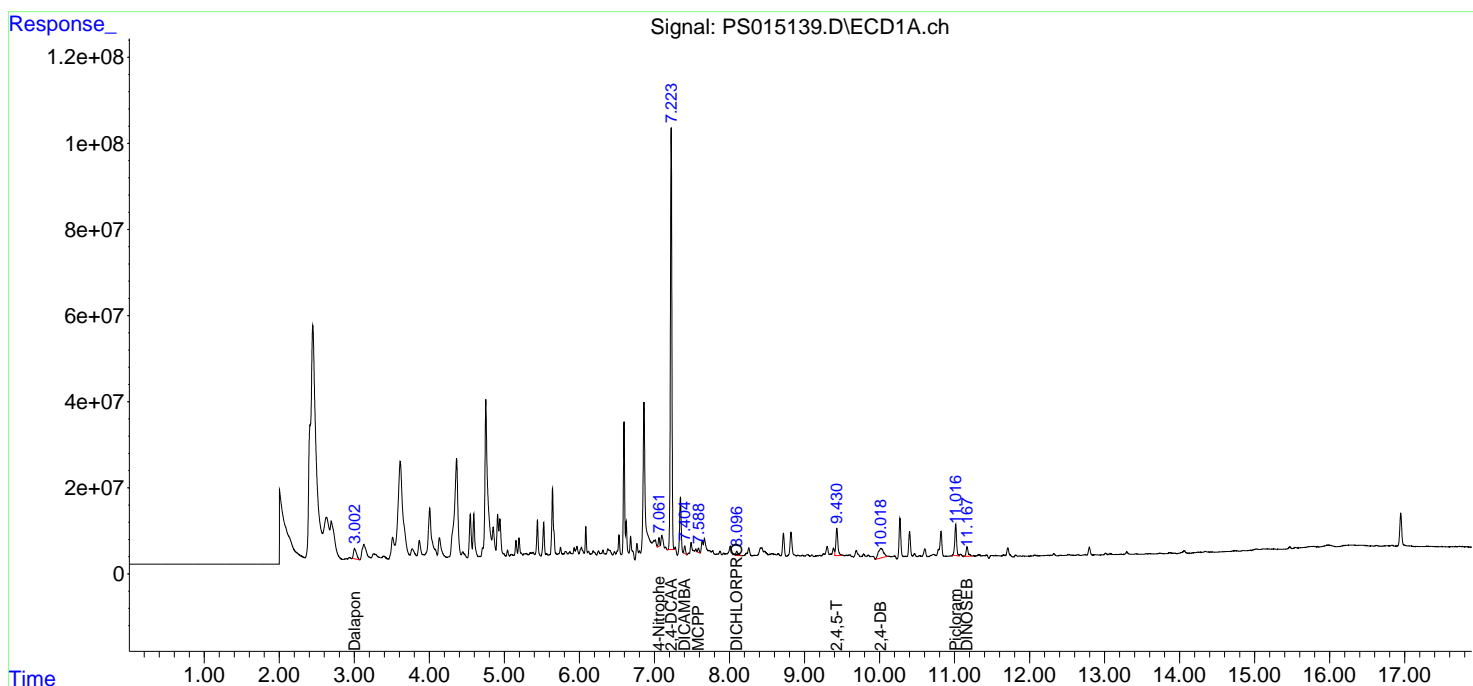
(f)=RT Delta > 1/2 Window (#)=Amounts differ by > 25% (m)=manual int.

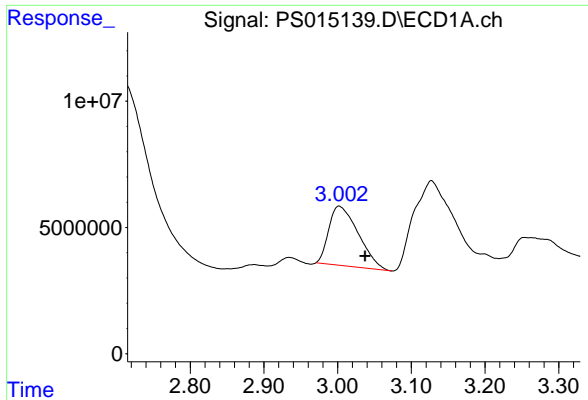
Data Path : Z:\pestpcbsrv\HPCHEM1\ECD_S\Data\PS052821\
 Data File : PS015139.D
 Signal(s) : Signal #1: ECD1A.ch Signal #2: ECD2B.ch
 Acq On : 29 May 2021 02:08
 Operator : DD\AJ
 Sample : M2560-02
 Misc :
 ALS Vial : 29 Sample Multiplier: 1

Instrument :
 ECD_S
 ClientSampled :

Integration File signal 1: autoint1.e
 Integration File signal 2: autoint2.e
 Quant Time: May 31 02:00:24 2021
 Quant Method : Z:\pestpcbsrv\HPCHEM1\ECD_S\Method\PS052821.M
 Quant Title : 8080.M
 QLast Update : Fri May 28 14:34:22 2021
 Response via : Initial Calibration
 Integrator: ChemStation

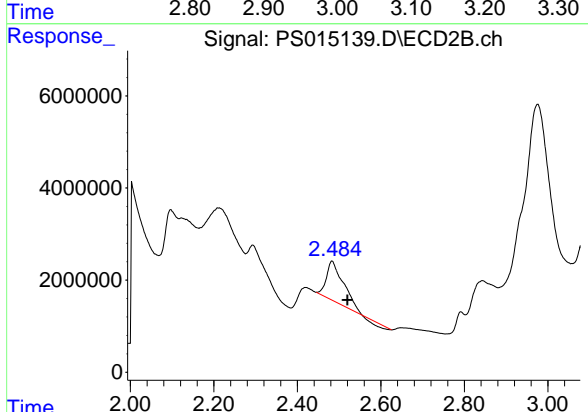
Volume Inj. : 2 µl
 Signal #1 Phase : Rtx-CLPesticides Signal #2 Phase: Rtx-CLPesticides2
 Signal #1 Info : 30M x 0.32mm x0.5 Signal #2 Info : 30M x 0.32mm x 0.25µm



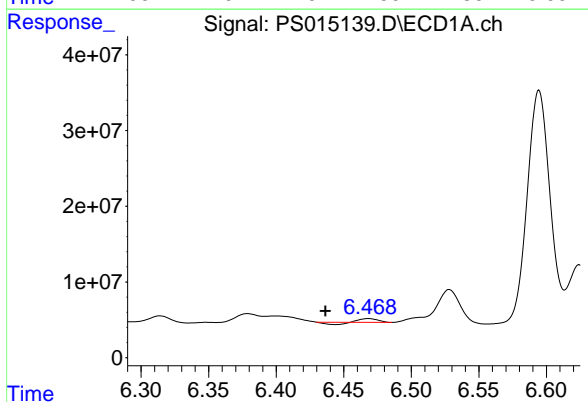


#1 Dalapon
 R.T.: 3.002 min
 Delta R.T.: -0.035 min
 Response: 65247870
 Conc: 24.82 ng/ml

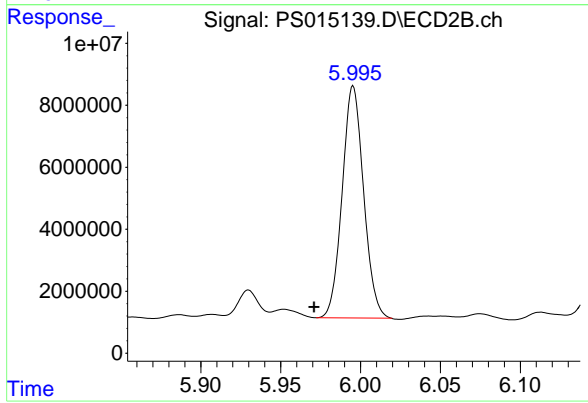
Instrument :
 ECD_S
 ClientSampled :



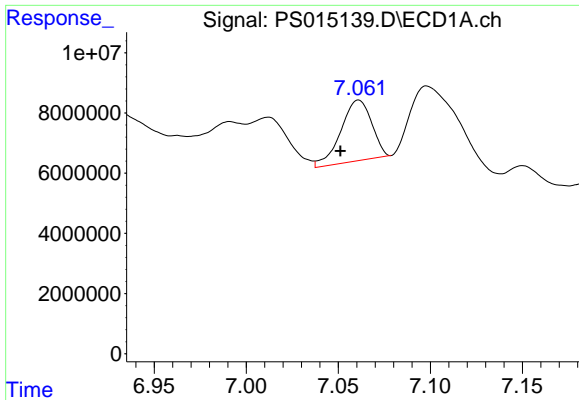
#1 Dalapon
 R.T.: 2.483 min
 Delta R.T.: -0.037 min
 Response: 22546348
 Conc: 34.45 ng/ml



#2 3,5-DICHLOROBENZOIC ACID
 R.T.: 6.468 min
 Delta R.T.: 0.032 min
 Response: 2786540
 Conc: N.D.

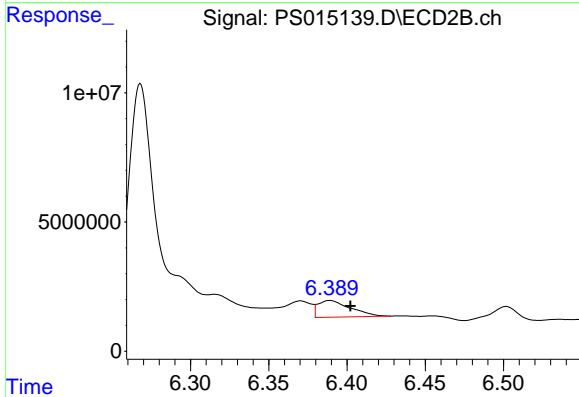


#2 3,5-DICHLOROBENZOIC ACID
 R.T.: 5.995 min
 Delta R.T.: 0.024 min
 Response: 69870816
 Conc: 86.49 ng/ml

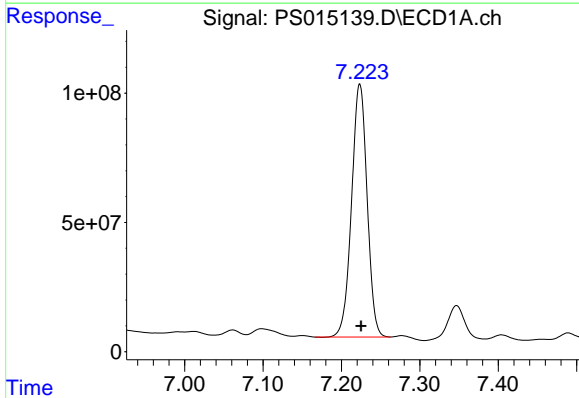


#3 4-Nitrophenol
 R.T.: 7.061 min
 Delta R.T.: 0.010 min
 Response: 23443476
 Conc: 16.63 ng/ml

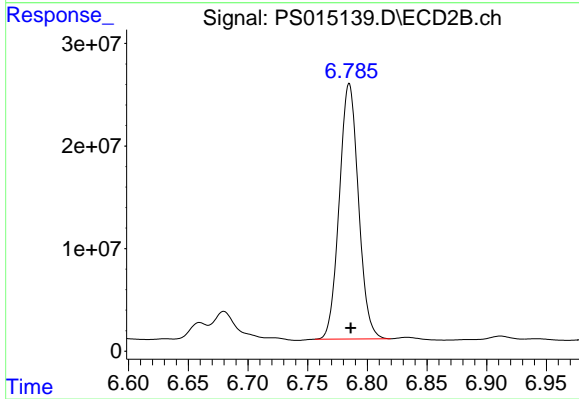
Instrument :
 ECD_S
 ClientSampleId :



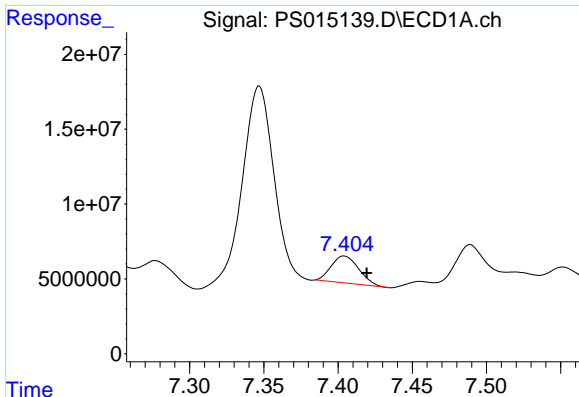
#3 4-Nitrophenol
 R.T.: 6.389 min
 Delta R.T.: -0.013 min
 Response: 9301363
 Conc: 29.23 ng/ml



#4 2,4-DCAA
 R.T.: 7.223 min
 Delta R.T.: -0.002 min
 Response: 1348299735
 Conc: 534.96 ng/ml



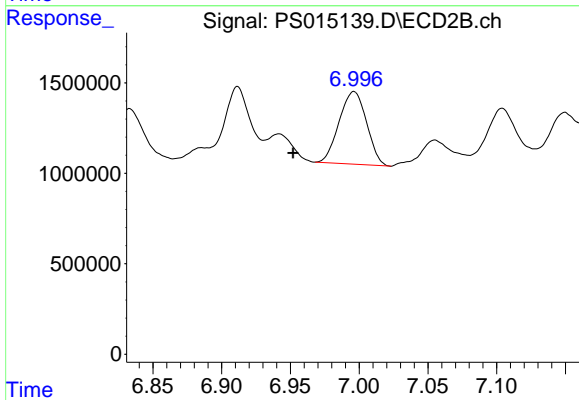
#4 2,4-DCAA
 R.T.: 6.785 min
 Delta R.T.: -0.001 min
 Response: 278258463
 Conc: 519.36 ng/ml



#5 DICAMBA

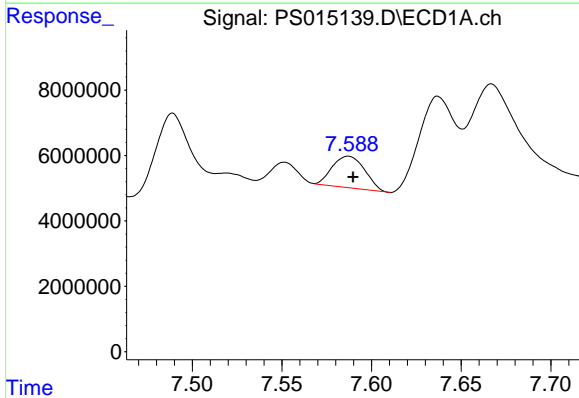
R.T.: 7.404 min
 Delta R.T.: -0.015 min
 Response: 23263748
 Conc: 2.44 ng/ml

Instrument :
 ECD_S
 ClientSampled :



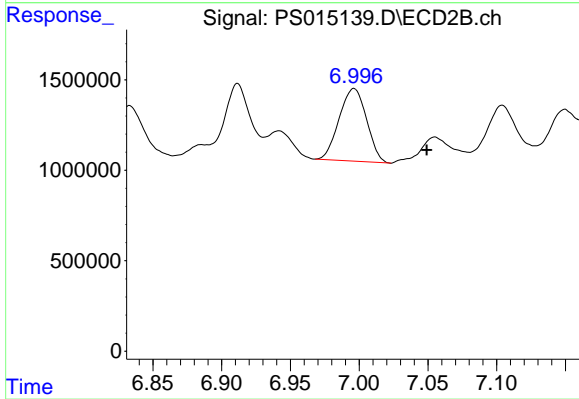
#5 DICAMBA

R.T.: 6.996 min
 Delta R.T.: 0.044 min
 Response: 5573172
 Conc: 2.52 ng/ml



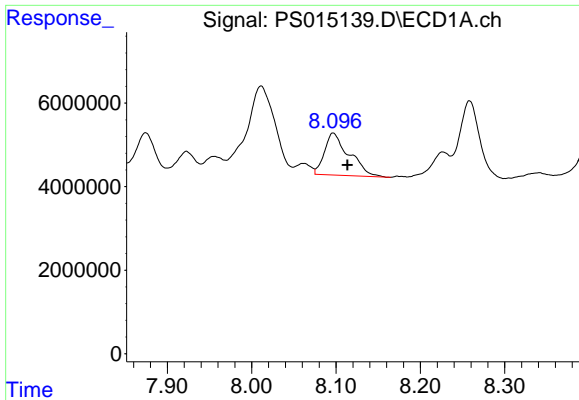
#6 MCP

R.T.: 7.587 min
 Delta R.T.: -0.003 min
 Response: 12172957
 Conc: 1.69 ug/ml



#6 MCP

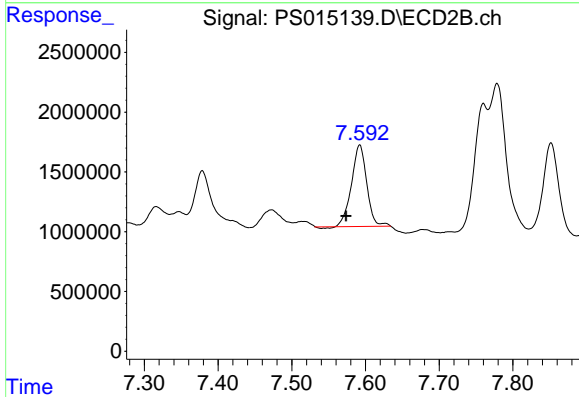
R.T.: 6.996 min
 Delta R.T.: -0.053 min
 Response: 5573172
 Conc: 3.15 ug/ml



#8 DICHLORPROP

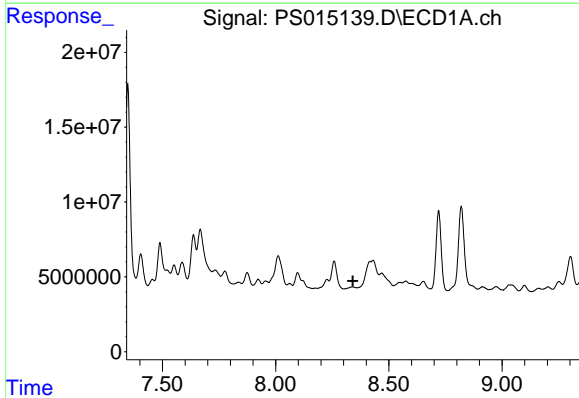
R.T.: 8.097 min
 Delta R.T.: -0.017 min
 Response: 20329550
 Conc: 8.83 ng/ml

Instrument :
 ECD_S
 ClientSampleId :



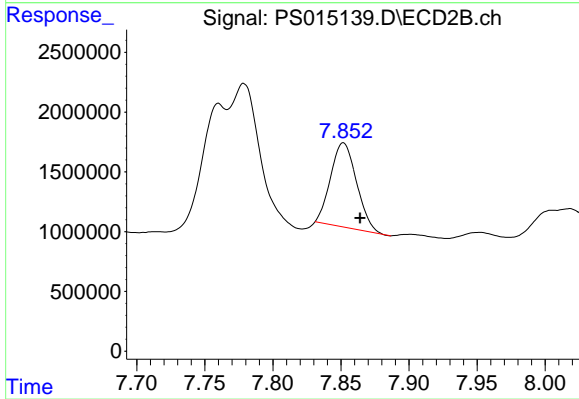
#8 DICHLORPROP

R.T.: 7.592 min
 Delta R.T.: 0.019 min
 Response: 9791296
 Conc: 18.02 ng/ml



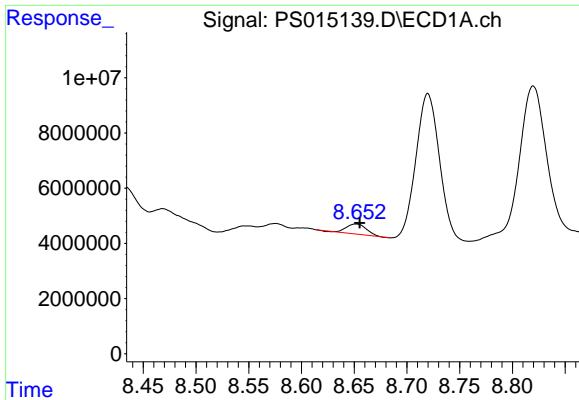
#9 2,4-D

R.T.: 0.000 min
 Exp R.T. : 8.341 min
 Response: 0
 Conc: N.D.



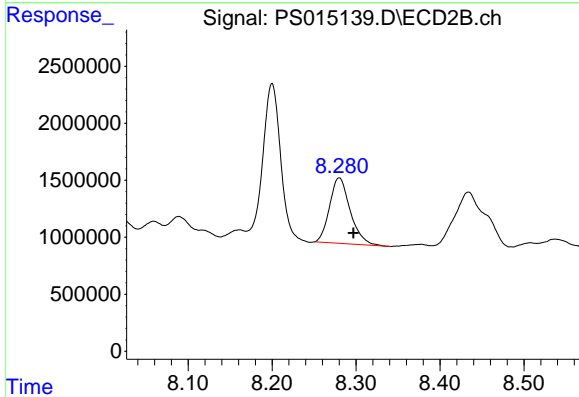
#9 2,4-D

R.T.: 7.852 min
 Delta R.T.: -0.012 min
 Response: 9333845
 Conc: 14.49 ng/ml

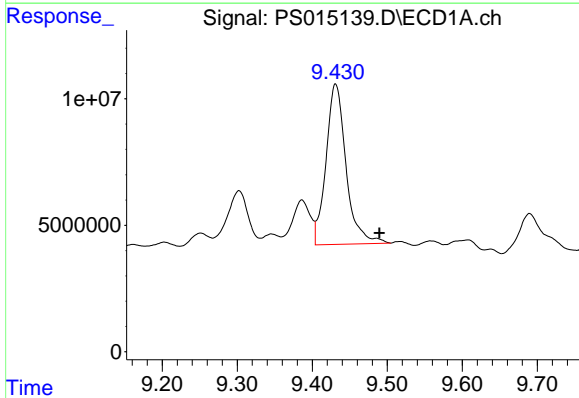


#10 Pentachlorophenol
 R.T.: 8.652 min
 Delta R.T.: -0.004 min
 Response: 4806509
 Conc: N.D.

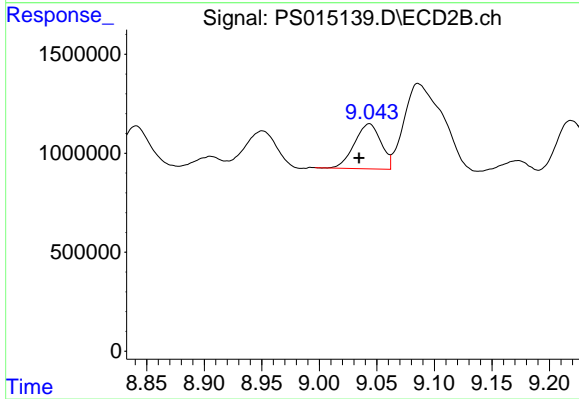
Instrument :
 ECD_S
 ClientSampleId :



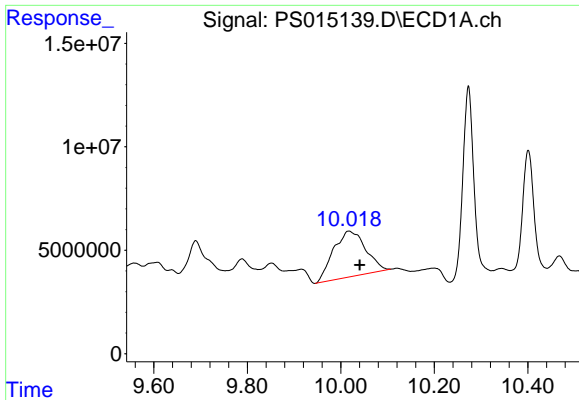
#10 Pentachlorophenol
 R.T.: 8.280 min
 Delta R.T.: -0.017 min
 Response: 9812210
 Conc: 1.33 ng/ml



#12 2,4,5-T
 R.T.: 9.431 min
 Delta R.T.: -0.058 min
 Response: 117869343
 Conc: 9.81 ng/ml

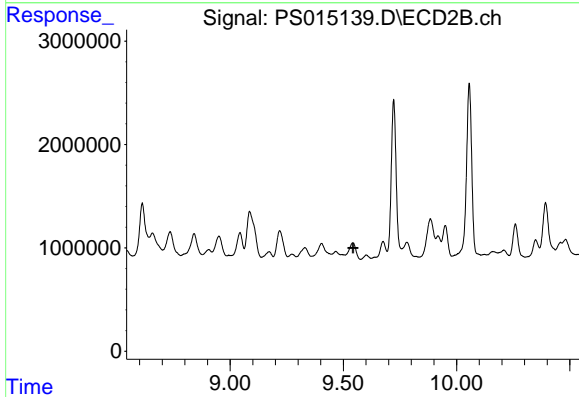


#12 2,4,5-T
 R.T.: 9.044 min
 Delta R.T.: 0.009 min
 Response: 3661475
 Conc: 1.26 ng/ml

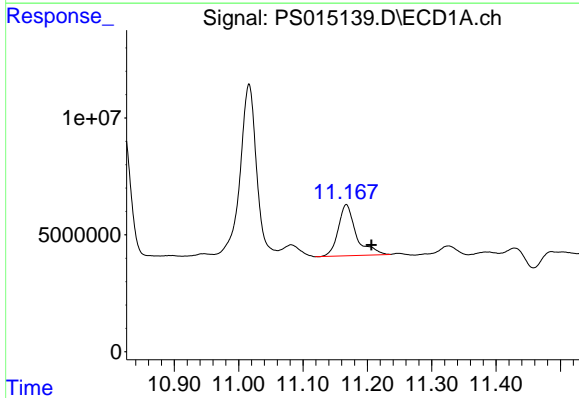


#13 2,4-DB
 R.T.: 10.017 min
 Delta R.T.: -0.023 min
 Response: 106102662
 Conc: 41.67 ng/ml

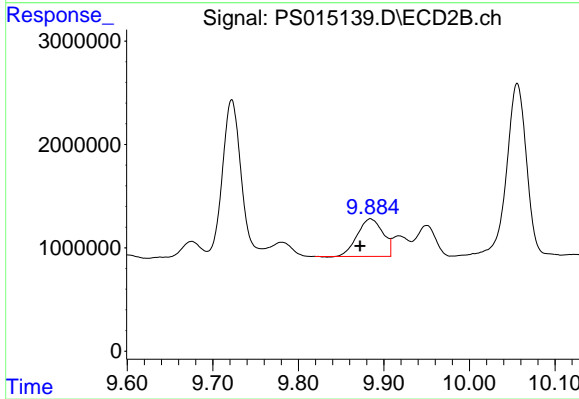
Instrument :
 ECD_S
 ClientSampled :



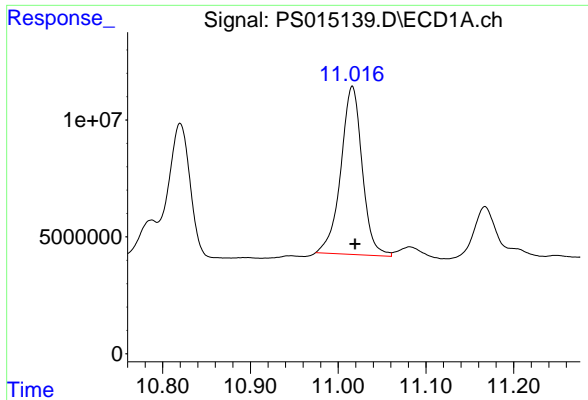
#13 2,4-DB
 R.T.: 0.000 min
 Exp R.T. : 9.542 min
 Response: 0
 Conc: N.D.



#14 DINOSEB
 R.T.: 11.167 min
 Delta R.T.: -0.039 min
 Response: 42438497
 Conc: 5.31 ng/ml

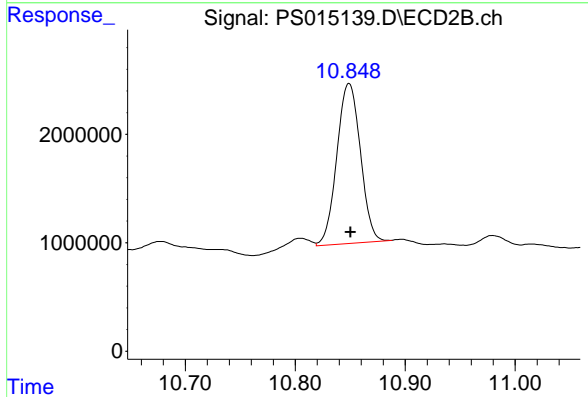


#14 DINOSEB
 R.T.: 9.884 min
 Delta R.T.: 0.012 min
 Response: 7577001
 Conc: 4.15 ng/ml

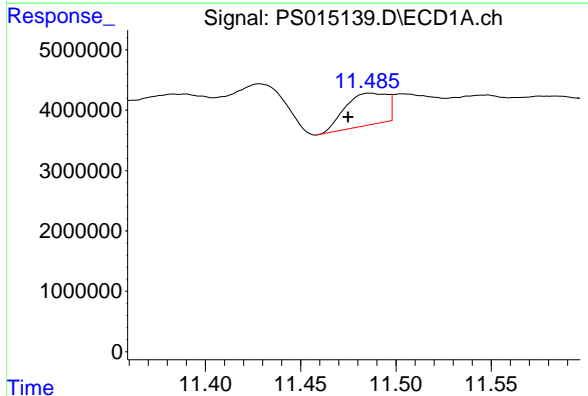


#15 Picloram
 R.T.: 11.016 min
 Delta R.T.: -0.003 min
 Response: 121479285
 Conc: 7.33 ng/ml

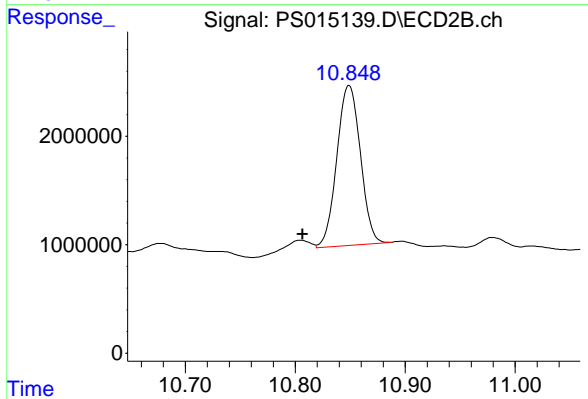
Instrument :
 ECD_S
 ClientSampled :



#15 Picloram
 R.T.: 10.849 min
 Delta R.T.: -0.001 min
 Response: 21930238
 Conc: 5.28 ng/ml



#16 DCPA
 R.T.: 11.486 min
 Delta R.T.: 0.012 min
 Response: 8138571
 Conc: N.D.



#16 DCPA
 R.T.: 10.849 min
 Delta R.T.: 0.042 min
 Response: 21930238
 Conc: 5.09 ng/ml