

Data Path : Z:\pestpcbsrv\HPCHEM1\ECD_S\Data\PS052821\
 Data File : PS015114.D
 Signal(s) : Signal #1: ECD1A.ch Signal #2: ECD2B.ch
 Acq On : 28 May 2021 15:17
 Operator : DD\AJ
 Sample : HSTDCCC750
 Misc :
 ALS Vial : 3 Sample Multiplier: 1

Instrument :
 ECD_S
 ClientSampleId :
 HSTDCCC750

Integration File signal 1: autoint1.e
 Integration File signal 2: autoint2.e
 Quant Time: May 31 01:51:35 2021
 Quant Method : Z:\pestpcbsrv\HPCHEM1\ECD_S\Method\PS052821.M
 Quant Title : 8080.M
 QLast Update : Fri May 28 14:34:22 2021
 Response via : Initial Calibration
 Integrator: ChemStation

Volume Inj. : 2 µl
 Signal #1 Phase : Rtx-CLPesticides Signal #2 Phase: Rtx-CLPesticides2
 Signal #1 Info : 30M x 0.32mm x0.5 Signal #2 Info : 30M x 0.32mm x 0.25µm

	Compound	RT#1	RT#2	Resp#1	Resp#2	ng/ml	ng/ml

System Monitoring Compounds							
4) S	2,4-DCAA	7.226	6.787	1842.0E6	392.9E6	730.862	733.410
Target Compounds							
1) T	Dalapon	3.039	2.521	1785.1E6	438.6E6	679.170	670.117
2) T	3,5-DICHL...	6.437	5.972	2343.6E6	554.0E6	679.621	685.769
3) T	4-Nitroph...	7.052	6.403	953.3E6	213.0E6	676.272	669.531
5) T	DICAMBA	7.419	6.953	6634.7E6	1551.7E6	696.060	701.194
6) T	MCP P	7.591	7.050	514.4E6	123.4E6	71.486	69.859
7) T	MCPA	7.739	7.264	706.4E6	178.6E6	70.382	68.733
8) T	DICHLORPROP	8.114	7.575	1589.5E6	375.5E6	690.139	691.264
9) T	2,4-D	8.342	7.866	1756.5E6	444.9E6	689.341	690.854
10) T	Pentachlo...	8.657	8.297	22694.3E6	5158.8E6	701.072	700.813
11) T	2,4,5-TP ...	9.207	8.660	8639.5E6	2047.9E6	696.115	705.709
12) T	2,4,5-T	9.490	9.036	8387.5E6	2042.8E6	698.327	705.638
13) T	2,4-DB	10.041	9.544	1763.9E6	269.9E6	692.652	699.791
14) T	DINOSEB	11.207	9.874	5660.0E6	1328.3E6	708.419	727.368
15) T	Picloram	11.020	10.852	11647.7E6	2936.6E6	703.074	707.132
16) T	DCPA	11.475	10.808	11897.9E6	3062.0E6	705.599	710.288

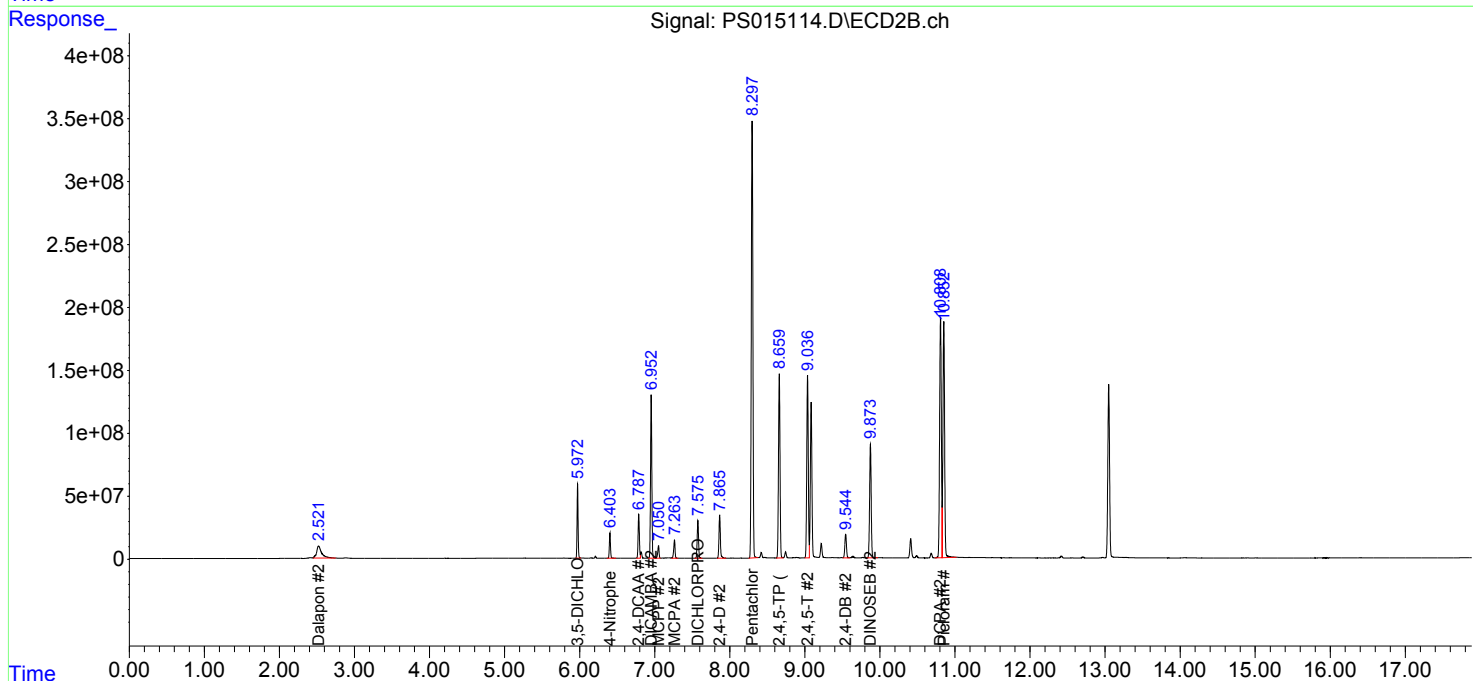
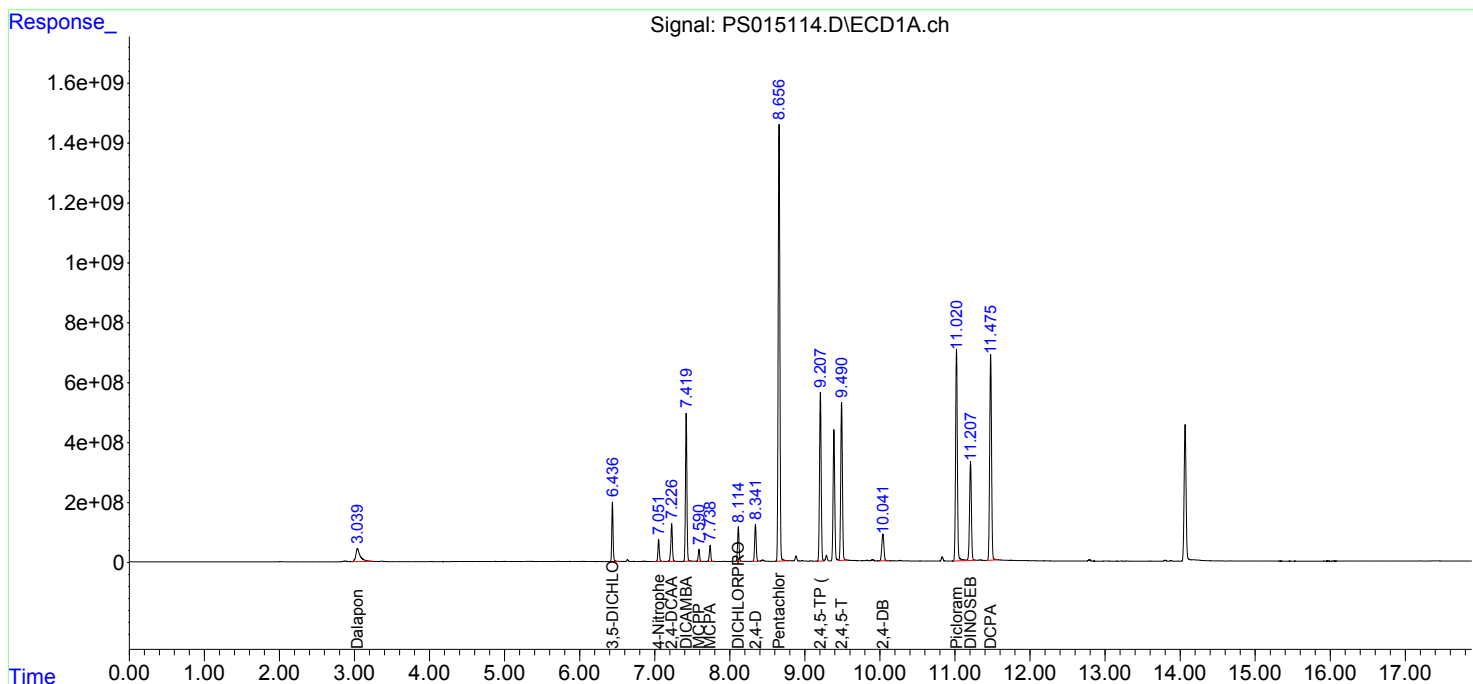
(f)=RT Delta > 1/2 Window (#)=Amounts differ by > 25% (m)=manual int.

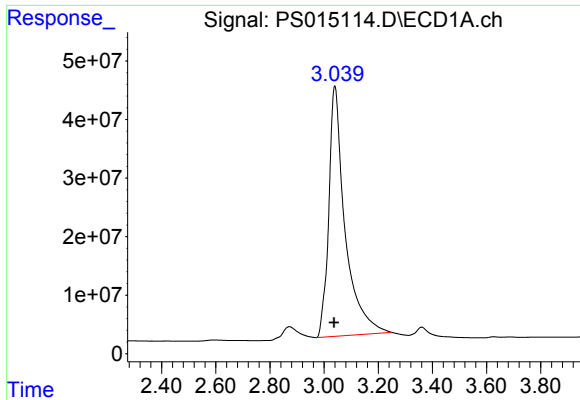
Data Path : Z:\pestpcbsrv\HPCHEM1\ECD_S\Data\PS052821\
 Data File : PS015114.D
 Signal(s) : Signal #1: ECD1A.ch Signal #2: ECD2B.ch
 Acq On : 28 May 2021 15:17
 Operator : DD\AJ
 Sample : HSTDCCC750
 Misc :
 ALS Vial : 3 Sample Multiplier: 1

Instrument :
 ECD_S
 ClientSampleId :
 HSTDCCC750

Integration File signal 1: autoint1.e
 Integration File signal 2: autoint2.e
 Quant Time: May 31 01:51:35 2021
 Quant Method : Z:\pestpcbsrv\HPCHEM1\ECD_S\Method\PS052821.M
 Quant Title : 8080.M
 QLast Update : Fri May 28 14:34:22 2021
 Response via : Initial Calibration
 Integrator: ChemStation

Volume Inj. : 2 µl
 Signal #1 Phase : Rtx-CLPesticides Signal #2 Phase: Rtx-CLPesticides2
 Signal #1 Info : 30M x 0.32mm x0.5 Signal #2 Info : 30M x 0.32mm x 0.25µm

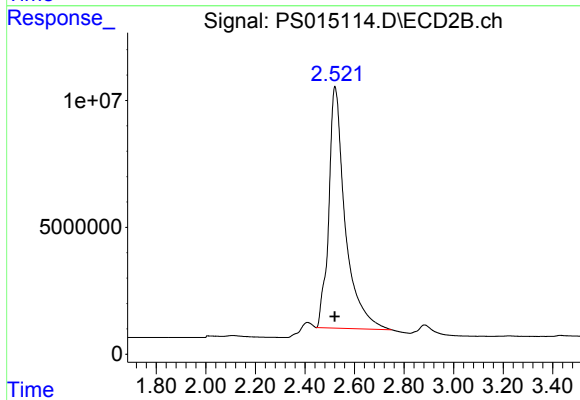




#1 Dalapon

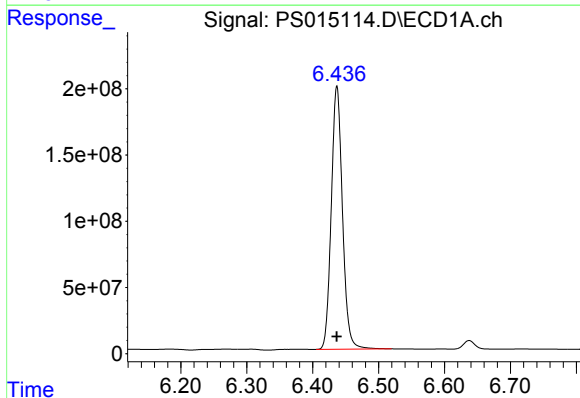
R.T.: 3.039 min
 Delta R.T.: 0.002 min
 Response: 1785115585
 Conc: 679.17 ng/ml

Instrument :
 ECD_S
 ClientSampleId :
 HSTDCCC750



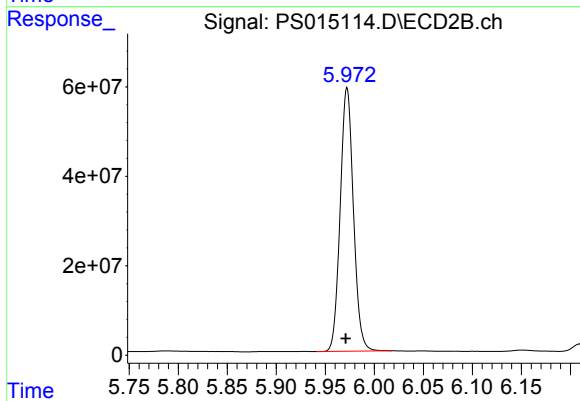
#1 Dalapon

R.T.: 2.521 min
 Delta R.T.: 0.000 min
 Response: 438559863
 Conc: 670.12 ng/ml



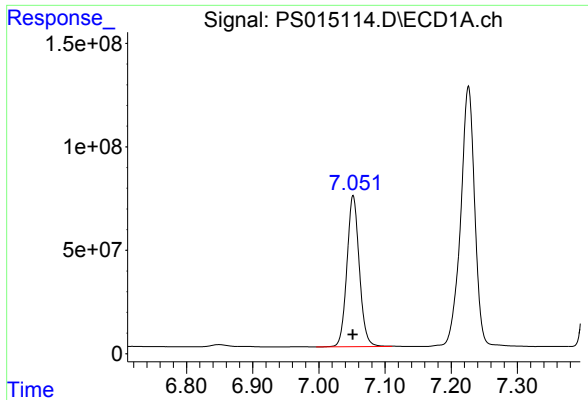
#2 3,5-DICHLOROBENZOIC ACID

R.T.: 6.437 min
 Delta R.T.: 0.000 min
 Response: 2343613281
 Conc: 679.62 ng/ml



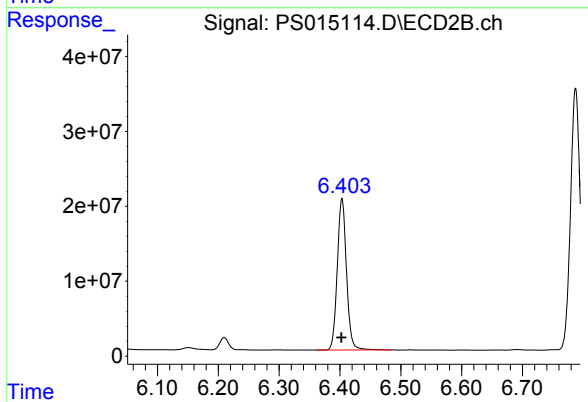
#2 3,5-DICHLOROBENZOIC ACID

R.T.: 5.972 min
 Delta R.T.: 0.001 min
 Response: 553994422
 Conc: 685.77 ng/ml

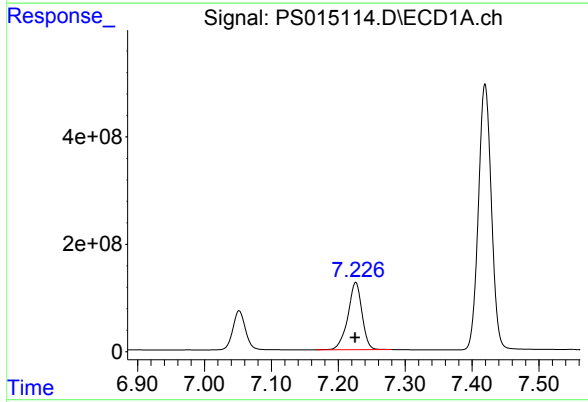


#3 4-Nitrophenol
R.T.: 7.052 min
Delta R.T.: 0.000 min
Response: 953338428
Conc: 676.27 ng/ml

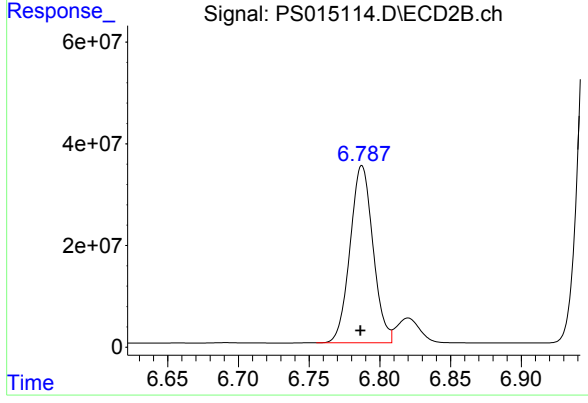
Instrument :
ECD_S
ClientSampleId :
HSTDCCC750



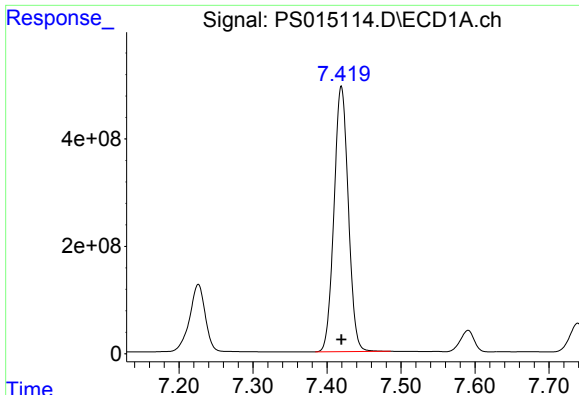
#3 4-Nitrophenol
R.T.: 6.403 min
Delta R.T.: 0.001 min
Response: 213027573
Conc: 669.53 ng/ml



#4 2,4-DCAA
R.T.: 7.226 min
Delta R.T.: 0.000 min
Response: 1842047085
Conc: 730.86 ng/ml



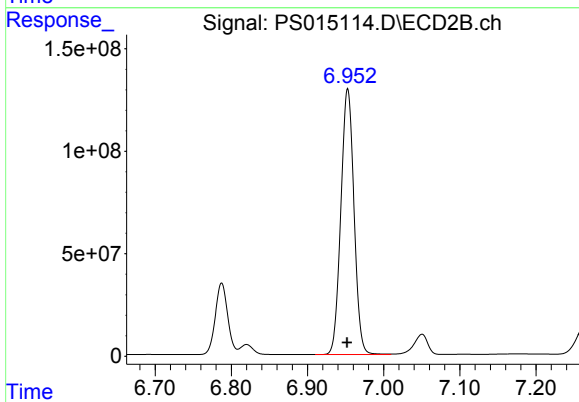
#4 2,4-DCAA
R.T.: 6.787 min
Delta R.T.: 0.001 min
Response: 392939593
Conc: 733.41 ng/ml



#5 DICAMBA

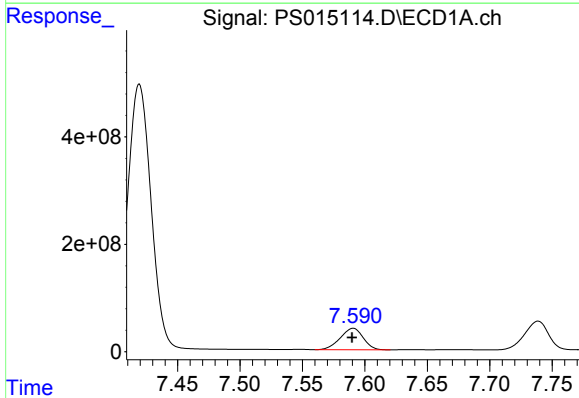
R.T.: 7.419 min
 Delta R.T.: 0.000 min
 Response: 6634670825
 Conc: 696.06 ng/ml

Instrument :
 ECD_S
 ClientSampleId :
 HSTDCCC750



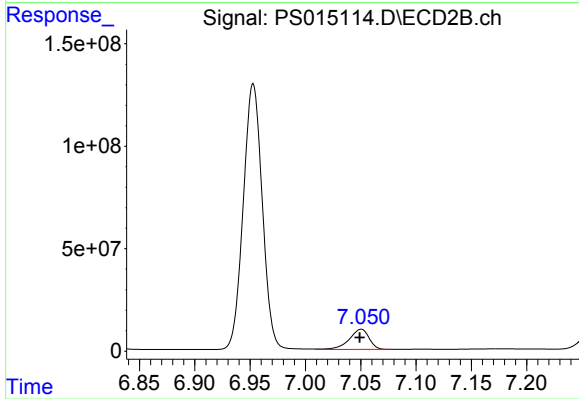
#5 DICAMBA

R.T.: 6.953 min
 Delta R.T.: 0.000 min
 Response: 1551697669
 Conc: 701.19 ng/ml



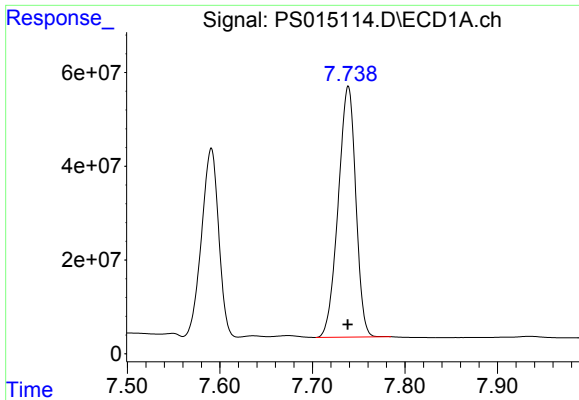
#6 MCPP

R.T.: 7.591 min
 Delta R.T.: 0.000 min
 Response: 514435949
 Conc: 71.49 ug/ml



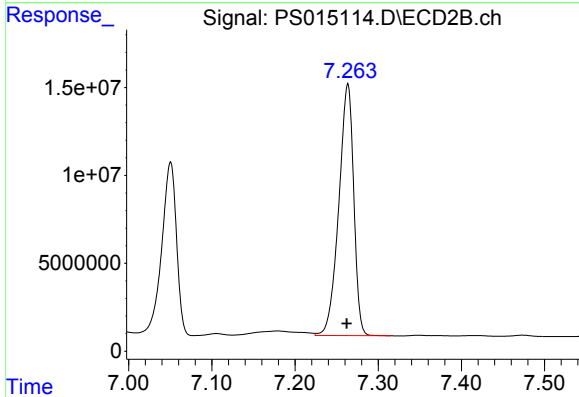
#6 MCPP

R.T.: 7.050 min
 Delta R.T.: 0.001 min
 Response: 123447992
 Conc: 69.86 ug/ml

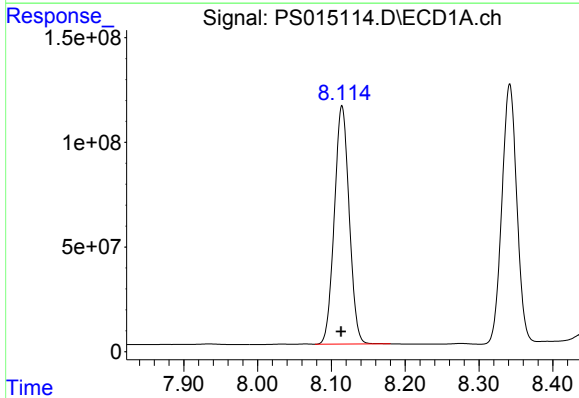


#7 MCPA
 R.T.: 7.739 min
 Delta R.T.: 0.000 min
 Response: 706388019
 Conc: 70.38 ug/ml

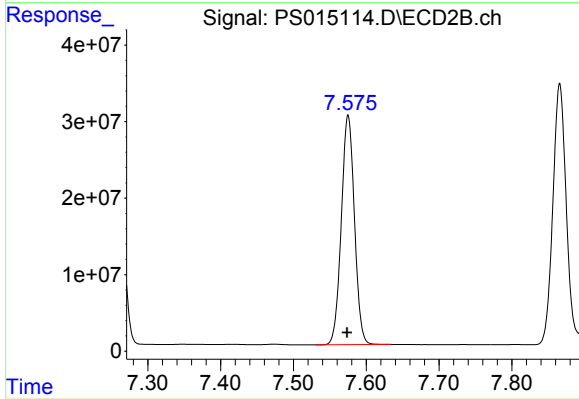
Instrument :
 ECD_S
 ClientSampleId :
 HSTDCCC750



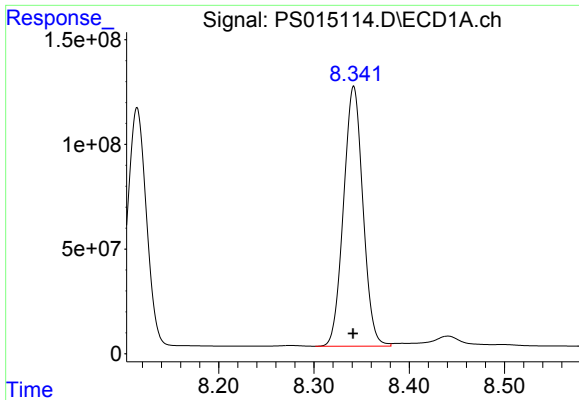
#7 MCPA
 R.T.: 7.264 min
 Delta R.T.: 0.001 min
 Response: 178621177
 Conc: 68.73 ug/ml



#8 DICHLORPROP
 R.T.: 8.114 min
 Delta R.T.: 0.000 min
 Response: 1589459766
 Conc: 690.14 ng/ml



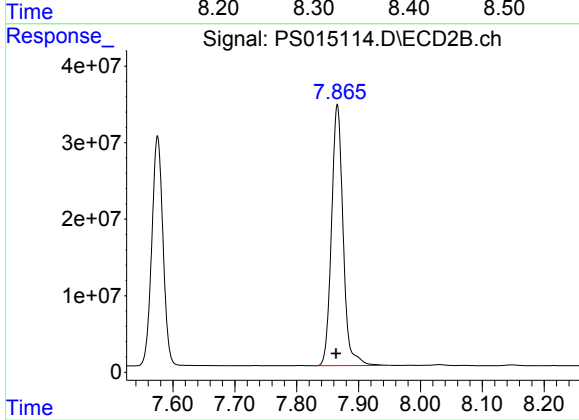
#8 DICHLORPROP
 R.T.: 7.575 min
 Delta R.T.: 0.001 min
 Response: 375538649
 Conc: 691.26 ng/ml



#9 2,4-D

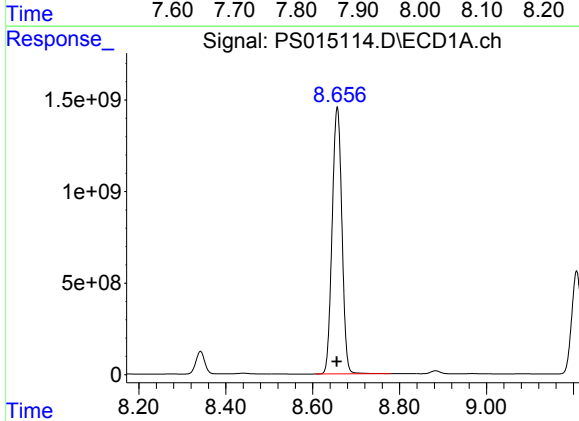
R.T.: 8.342 min
Delta R.T.: 0.000 min
Response: 1756520733
Conc: 689.34 ng/ml

Instrument :
ECD_S
ClientSampleId :
HSTDCCC750



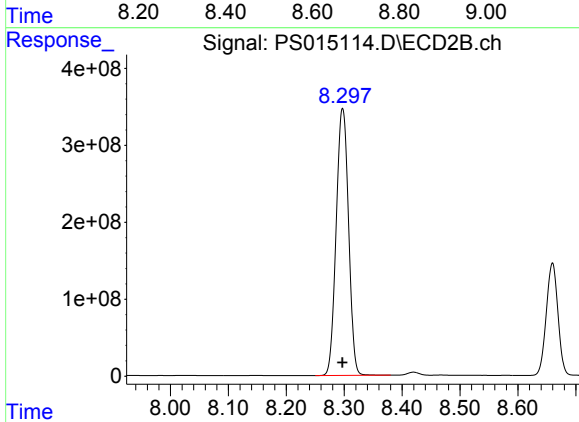
#9 2,4-D

R.T.: 7.866 min
Delta R.T.: 0.002 min
Response: 444927309
Conc: 690.85 ng/ml



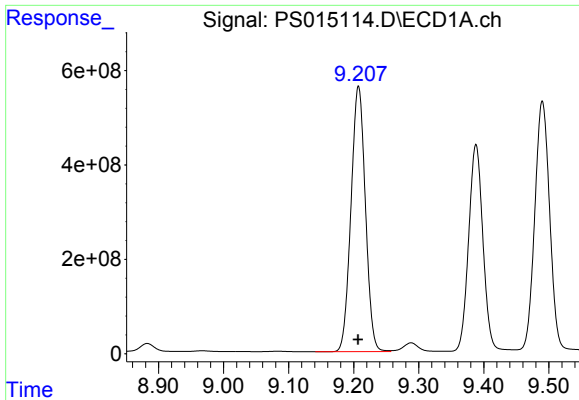
#10 Pentachlorophenol

R.T.: 8.657 min
Delta R.T.: 0.001 min
Response: 22694255445
Conc: 701.07 ng/ml



#10 Pentachlorophenol

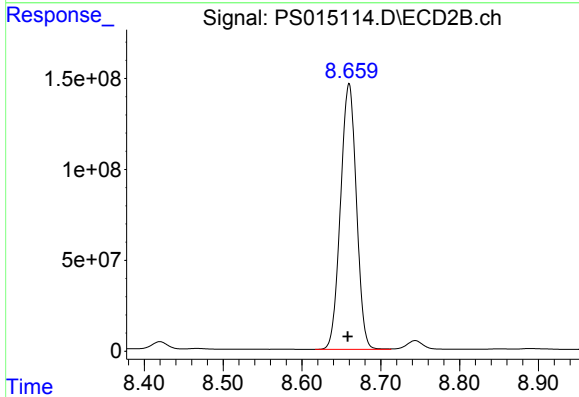
R.T.: 8.297 min
Delta R.T.: 0.000 min
Response: 5158821223
Conc: 700.81 ng/ml



#11 2,4,5-TP (SILVEX)

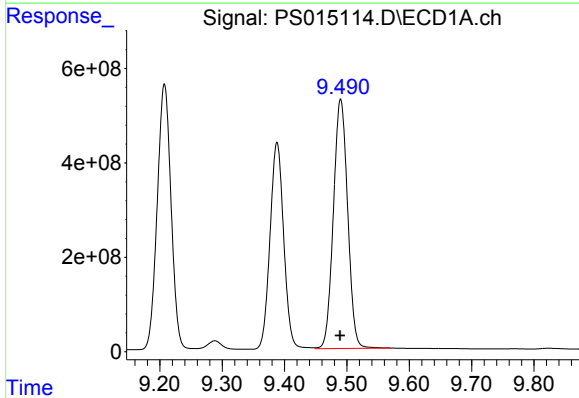
R.T.: 9.207 min
 Delta R.T.: 0.000 min
 Response: 8639483834
 Conc: 696.11 ng/ml

Instrument :
 ECD_S
 ClientSampleId :
 HSTDCCC750



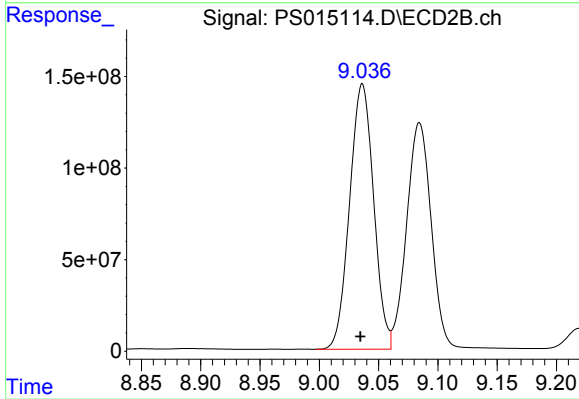
#11 2,4,5-TP (SILVEX)

R.T.: 8.660 min
 Delta R.T.: 0.002 min
 Response: 2047923390
 Conc: 705.71 ng/ml



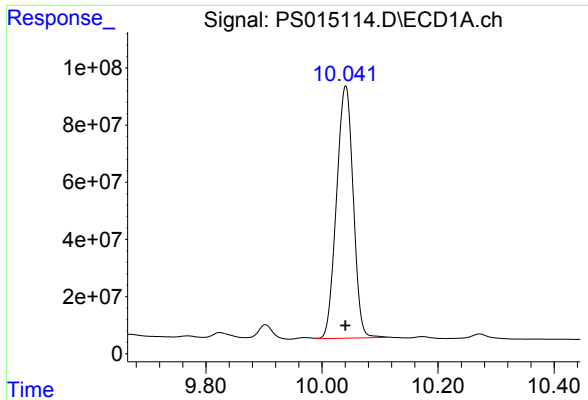
#12 2,4,5-T

R.T.: 9.490 min
 Delta R.T.: 0.000 min
 Response: 8387534326
 Conc: 698.33 ng/ml



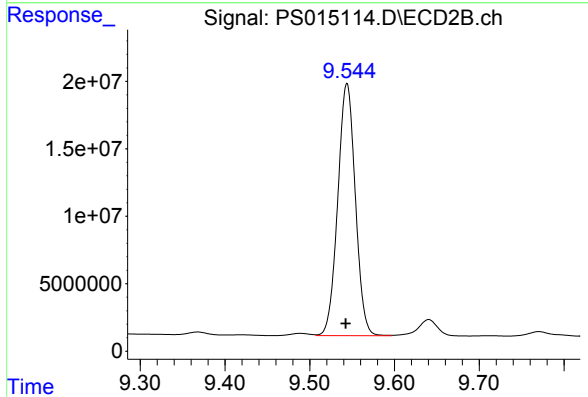
#12 2,4,5-T

R.T.: 9.036 min
 Delta R.T.: 0.002 min
 Response: 2042822592
 Conc: 705.64 ng/ml

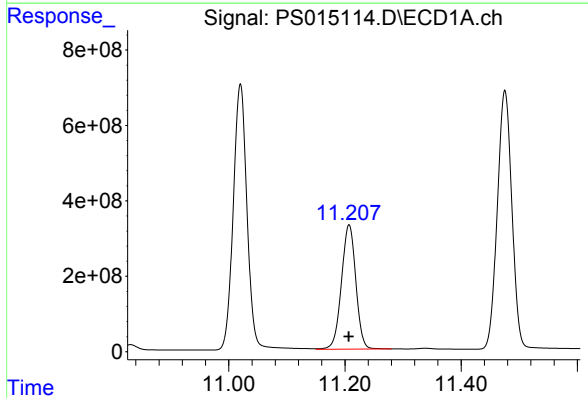


#13 2,4-DB
 R.T.: 10.041 min
 Delta R.T.: 0.000 min
 Response: 1763857734
 Conc: 692.65 ng/ml

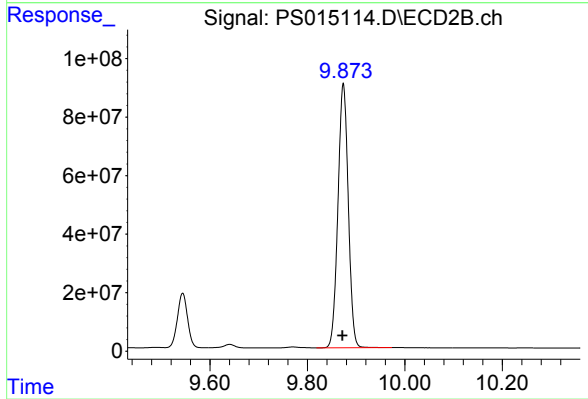
Instrument :
 ECD_S
 ClientSampleId :
 HSTDCCC750



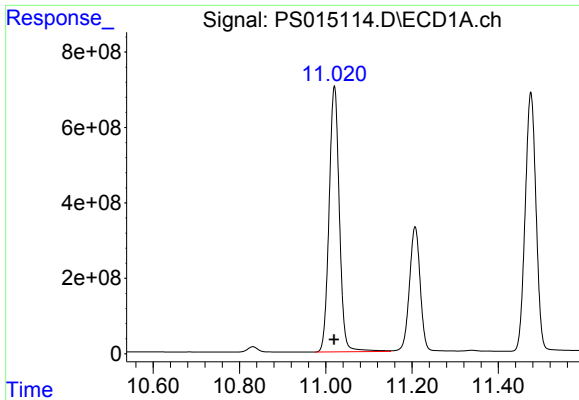
#13 2,4-DB
 R.T.: 9.544 min
 Delta R.T.: 0.002 min
 Response: 269943981
 Conc: 699.79 ng/ml



#14 DINOSEB
 R.T.: 11.207 min
 Delta R.T.: 0.000 min
 Response: 5659965458
 Conc: 708.42 ng/ml

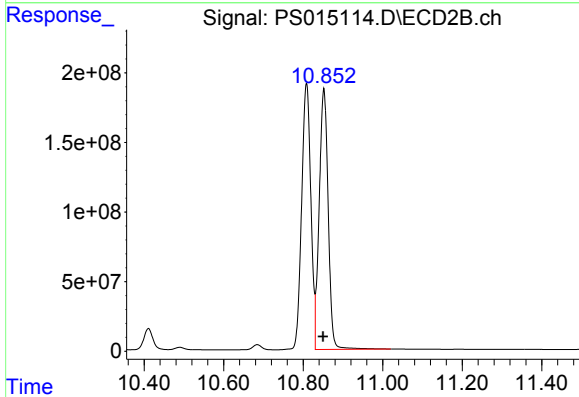


#14 DINOSEB
 R.T.: 9.874 min
 Delta R.T.: 0.002 min
 Response: 1328276986
 Conc: 727.37 ng/ml

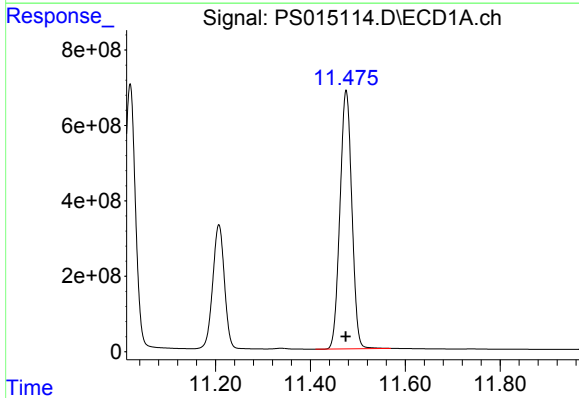


#15 Picloram
 R.T.: 11.020 min
 Delta R.T.: 0.000 min
 Response: 11647666094
 Conc: 703.07 ng/ml

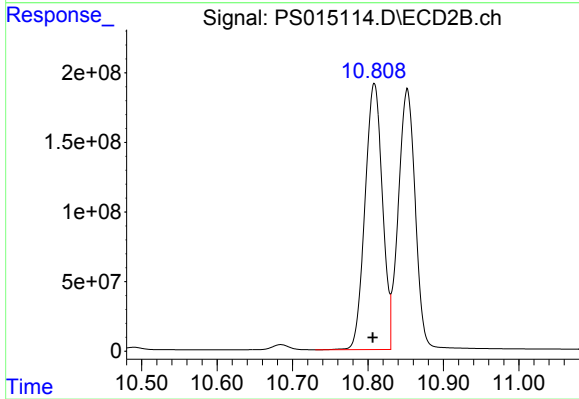
Instrument :
 ECD_S
 ClientSampleId :
 HSTDCCC750



#15 Picloram
 R.T.: 10.852 min
 Delta R.T.: 0.002 min
 Response: 2936643519
 Conc: 707.13 ng/ml



#16 DCPA
 R.T.: 11.475 min
 Delta R.T.: 0.000 min
 Response: 11897876664
 Conc: 705.60 ng/ml



#16 DCPA
 R.T.: 10.808 min
 Delta R.T.: 0.002 min
 Response: 3062048084
 Conc: 710.29 ng/ml