

Data Path : Z:\pestpcbsrv\HPCHEM1\ECD\_S\Data\PS052822\  
 Data File : PS019561.D  
 Signal(s) : Signal #1: ECD1A.ch Signal #2: ECD2B.ch  
 Acq On : 30 May 2022 03:28  
 Operator : AJ\MA  
 Sample : HSTDCCC750  
 Misc :  
 ALS Vial : 3 Sample Multiplier: 1

Instrument :  
 ECD\_S  
 ClientSampleId :  
 HSTDCCC750

Integration File signal 1: autoint1.e  
 Integration File signal 2: autoint2.e  
 Quant Time: May 30 03:49:34 2022  
 Quant Method : Z:\pestpcbsrv\HPCHEM1\ECD\_S\Method\PS052422.M  
 Quant Title : 8080.M  
 QLast Update : Wed May 25 02:05:34 2022  
 Response via : Initial Calibration  
 Integrator: ChemStation

Volume Inj. : 2 µl  
 Signal #1 Phase : Rtx-CLPesticides Signal #2 Phase: Rtx-CLPesticides2  
 Signal #1 Info : 30M x 0.32mm x0.5 Signal #2 Info : 30M x 0.32mm x 0.25µm

	Compound	RT#1	RT#2	Resp#1	Resp#2	ng/ml	ng/ml
-----							
System Monitoring Compounds							
4) S	2,4-DCAA	7.197	6.782	2010.3E6	646.9E6	837.915	834.814
Target Compounds							
1) T	Dalapon	3.017	2.529	3615.6E6	702.3E6	713.305	699.920
2) T	3,5-DICHL...	6.411	5.962	2417.8E6	927.1E6	764.959	773.452
3) T	4-Nitroph...	7.027	6.399	875.2E6	335.0E6	891.831	782.754
5) T	DICAMBA	7.387	6.947	7381.2E6	2681.5E6	777.147	784.408
6) T	MCP P	7.558	7.046	600.2E6	213.3E6	79.970	78.787
7) T	MCPA	7.706	7.258	846.9E6	299.2E6	78.387	77.866
8) T	DICHLORPROP	8.077	7.566	1969.9E6	689.4E6	769.323	780.416
9) T	2,4-D	8.306	7.858	2347.4E6	840.7E6	820.924	788.172
10) T	Pentachlo...	8.614	8.284	26850.0E6	9021.5E6	776.261	773.962
11) T	2,4,5-TP ...	9.164	8.644	12312.6E6	3970.5E6	784.194	789.806
12) T	2,4,5-T	9.448	9.021	14608.9E6	3788.1E6	776.257	805.439
13) T	2,4-DB	9.998	9.525	3359.7E6	504.2E6	830.381	815.829
14) T	DINOSEB	11.154	9.851	11869.0E6	2784.4E6	767.369	783.751
15) T	Picloram	10.977	10.831	22594.6E6	4838.3E6	761.343	752.187
16) T	DCPA	11.422	10.781	18791.8E6	4879.4E6	779.612	790.507
-----							

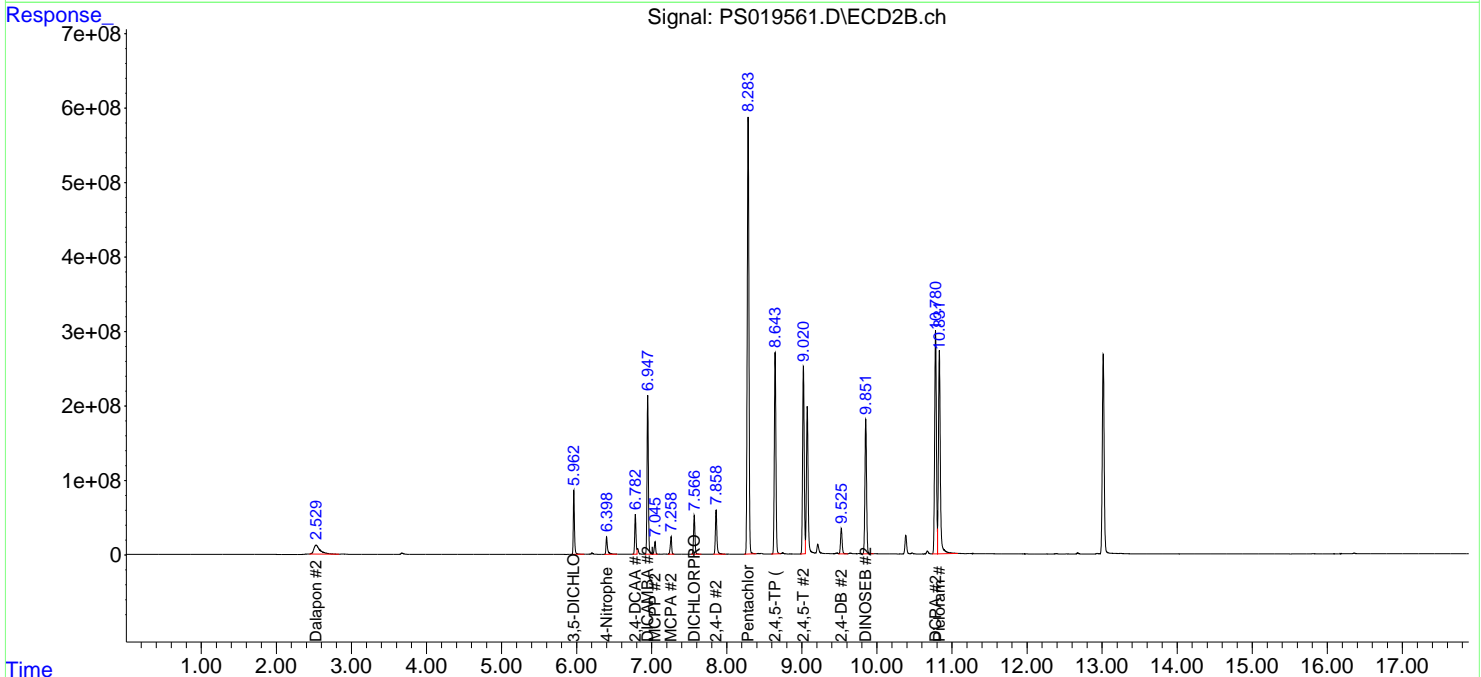
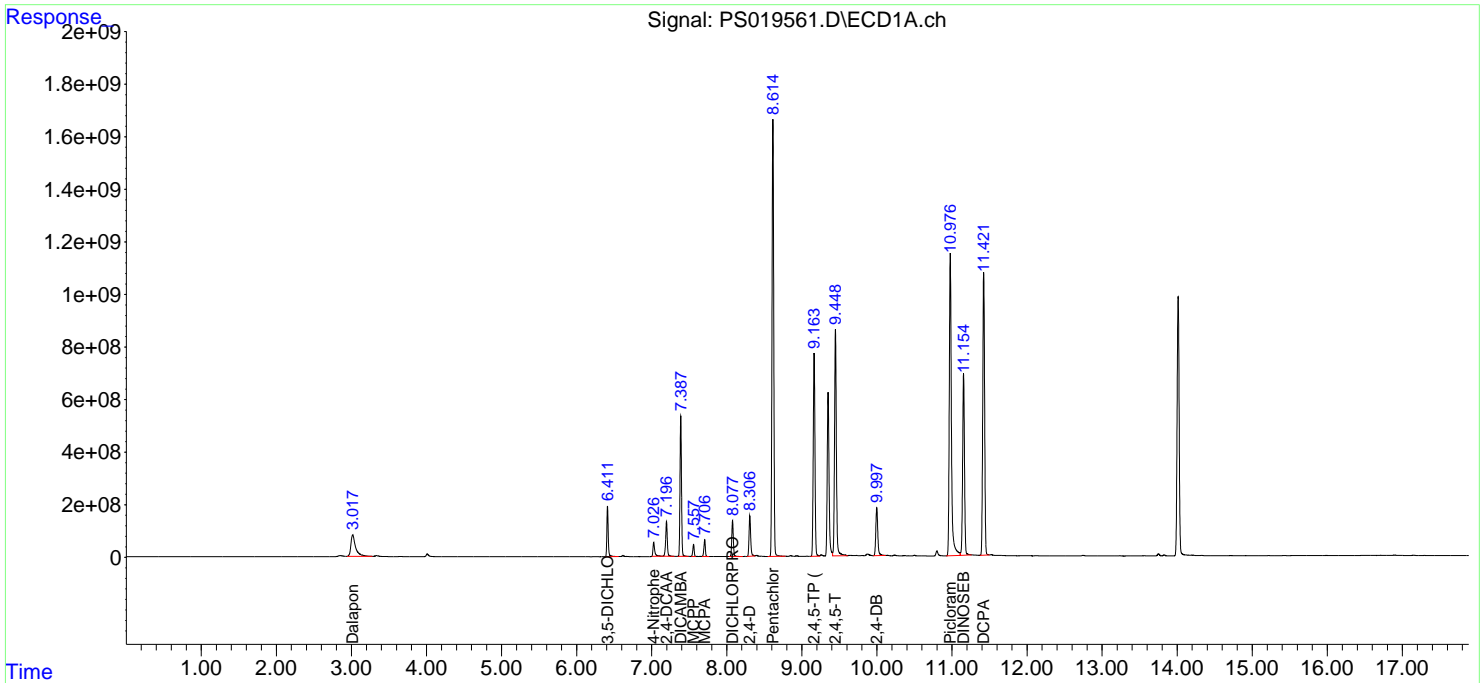
(f)=RT Delta > 1/2 Window (#)=Amounts differ by > 25% (m)=manual int.

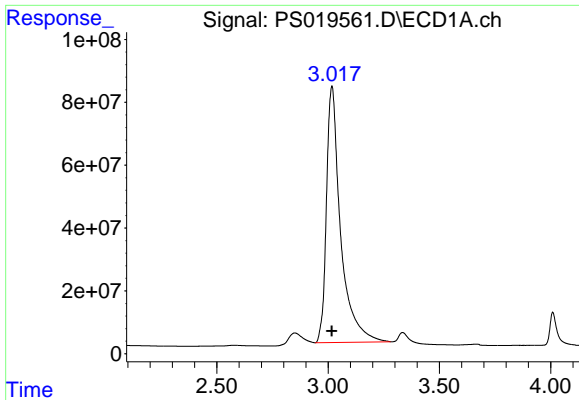
Data Path : Z:\pestpcbsrv\HPCHEM1\ECD\_S\Data\PS052822\  
 Data File : PS019561.D  
 Signal(s) : Signal #1: ECD1A.ch Signal #2: ECD2B.ch  
 Acq On : 30 May 2022 03:28  
 Operator : AJ\MA  
 Sample : HSTDCCC750  
 Misc :  
 ALS Vial : 3 Sample Multiplier: 1

Instrument :  
 ECD\_S  
 ClientSampleId :  
 HSTDCCC750

Integration File signal 1: autoint1.e  
 Integration File signal 2: autoint2.e  
 Quant Time: May 30 03:49:34 2022  
 Quant Method : Z:\pestpcbsrv\HPCHEM1\ECD\_S\Method\PS052422.M  
 Quant Title : 8080.M  
 QLast Update : Wed May 25 02:05:34 2022  
 Response via : Initial Calibration  
 Integrator: ChemStation

Volume Inj. : 2 µl  
 Signal #1 Phase : Rtx-CLPesticides Signal #2 Phase: Rtx-CLPesticides2  
 Signal #1 Info : 30M x 0.32mm x0.5 Signal #2 Info : 30M x 0.32mm x 0.25µm

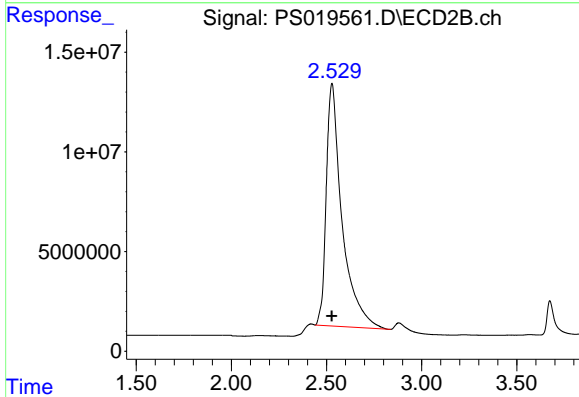




#1 Dalapon

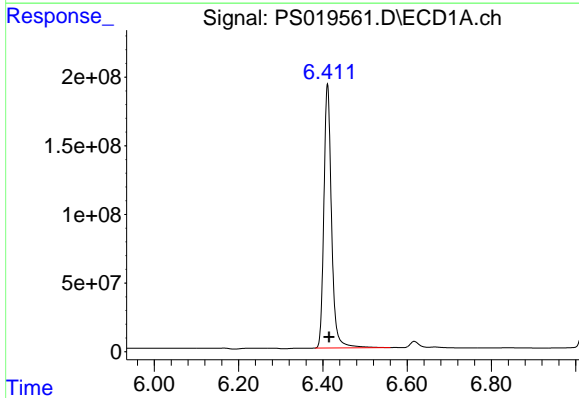
R.T.: 3.017 min  
 Delta R.T.: 0.001 min  
 Response: 3615574258  
 Conc: 713.30 ng/ml

Instrument :  
 ECD\_S  
 ClientSampleId :  
 HSTDCCC750



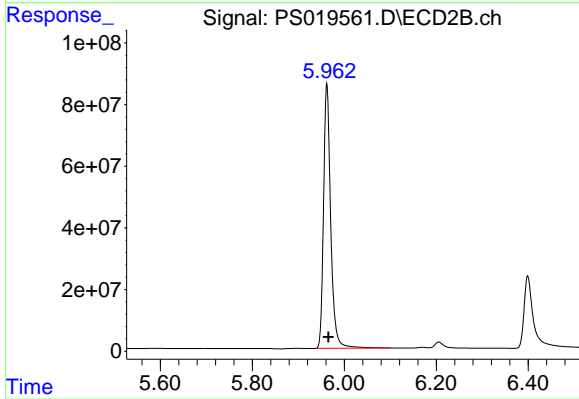
#1 Dalapon

R.T.: 2.529 min  
 Delta R.T.: 0.001 min  
 Response: 702328572  
 Conc: 699.92 ng/ml



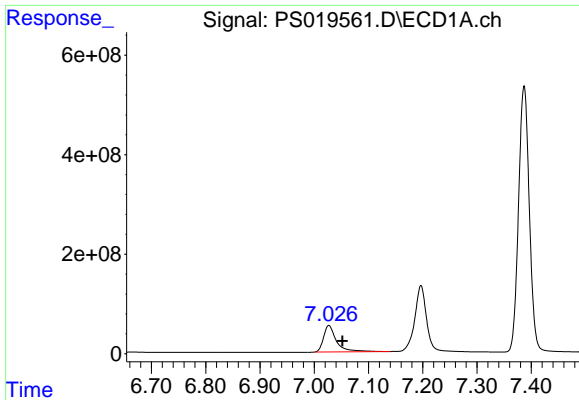
#2 3,5-DICHLOROBENZOIC ACID

R.T.: 6.411 min  
 Delta R.T.: -0.004 min  
 Response: 2417756417  
 Conc: 764.96 ng/ml



#2 3,5-DICHLOROBENZOIC ACID

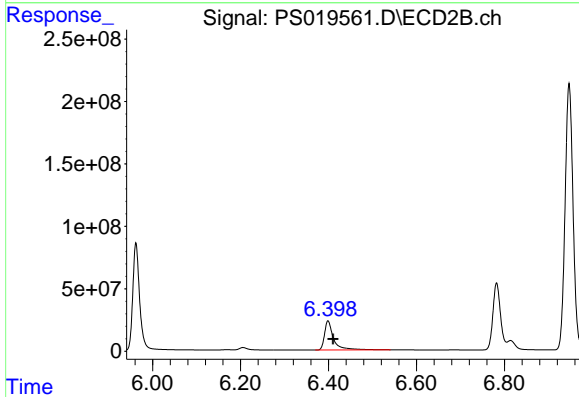
R.T.: 5.962 min  
 Delta R.T.: -0.003 min  
 Response: 927116080  
 Conc: 773.45 ng/ml



#3 4-Nitrophenol

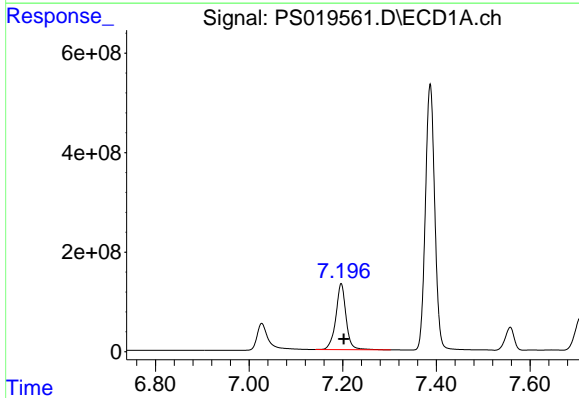
R.T.: 7.027 min  
 Delta R.T.: -0.025 min  
 Response: 875170134  
 Conc: 891.83 ng/ml

Instrument :  
 ECD\_S  
 ClientSampleId :  
 HSTDCCC750



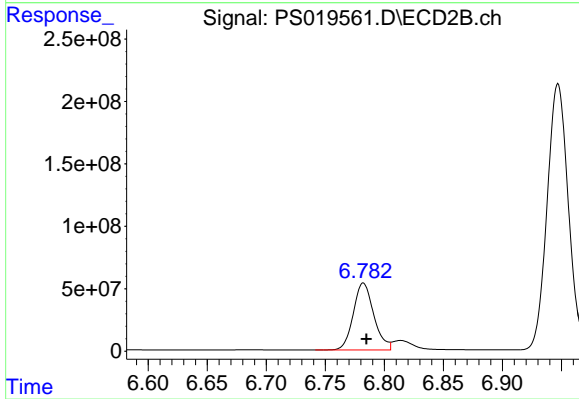
#3 4-Nitrophenol

R.T.: 6.399 min  
 Delta R.T.: -0.012 min  
 Response: 335046865  
 Conc: 782.75 ng/ml



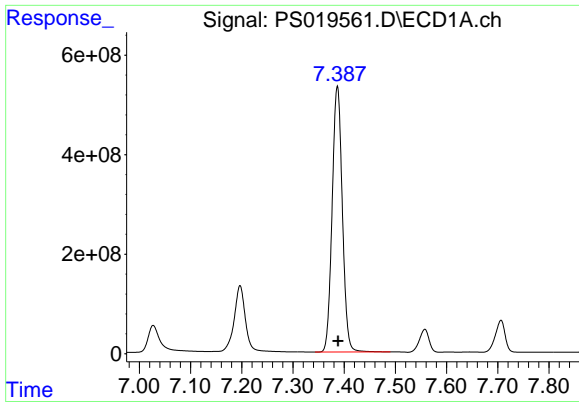
#4 2,4-DCAA

R.T.: 7.197 min  
 Delta R.T.: -0.005 min  
 Response: 2010298749  
 Conc: 837.92 ng/ml



#4 2,4-DCAA

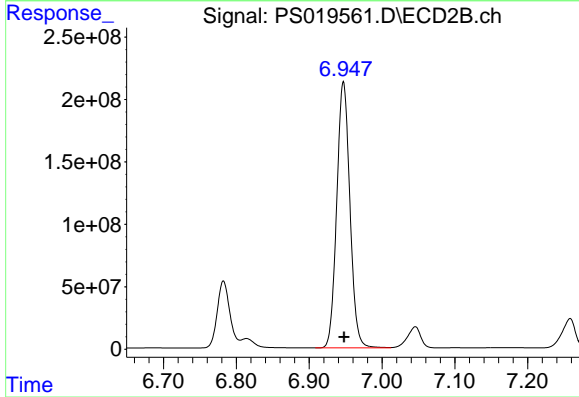
R.T.: 6.782 min  
 Delta R.T.: -0.003 min  
 Response: 646872903  
 Conc: 834.81 ng/ml



#5 DICAMBA

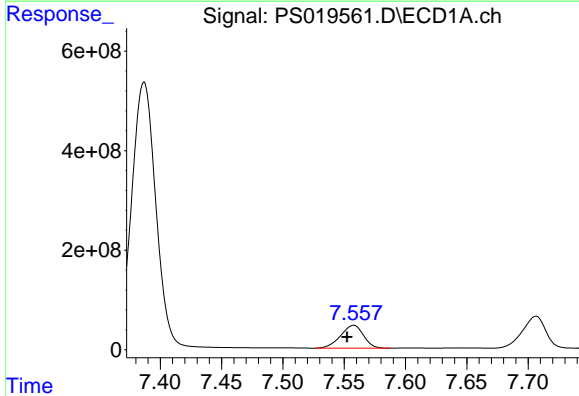
R.T.: 7.387 min  
 Delta R.T.: -0.002 min  
 Response: 7381150095  
 Conc: 777.15 ng/ml

Instrument :  
 ECD\_S  
 ClientSampleId :  
 HSTDCCC750



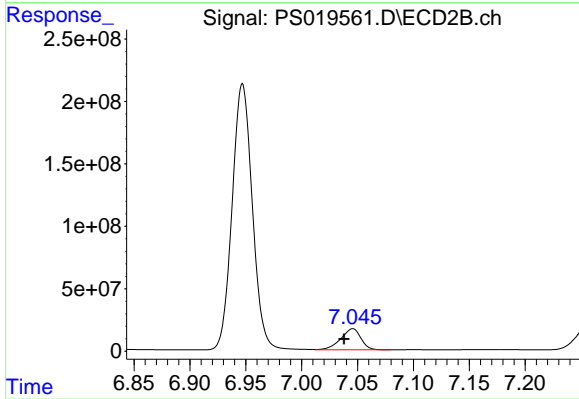
#5 DICAMBA

R.T.: 6.947 min  
 Delta R.T.: 0.000 min  
 Response: 2681457010  
 Conc: 784.41 ng/ml



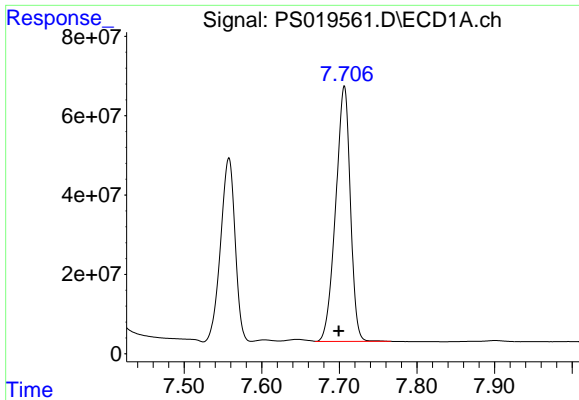
#6 MCP

R.T.: 7.558 min  
 Delta R.T.: 0.005 min  
 Response: 600219217  
 Conc: 79.97 ug/ml



#6 MCP

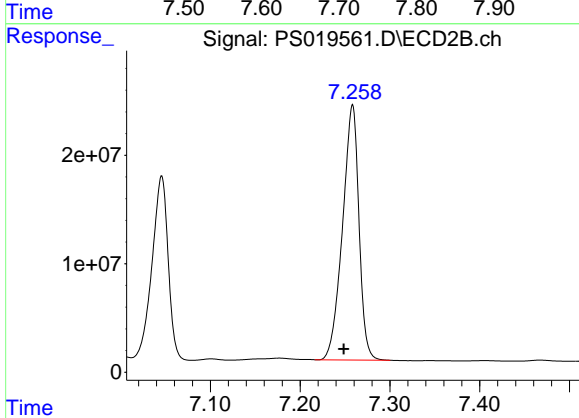
R.T.: 7.046 min  
 Delta R.T.: 0.008 min  
 Response: 213277648  
 Conc: 78.79 ug/ml



#7 MCPA

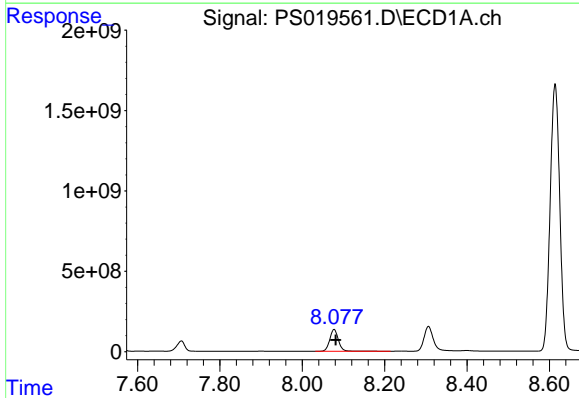
R.T.: 7.706 min  
 Delta R.T.: 0.007 min  
 Response: 846891632  
 Conc: 78.39 ug/ml

Instrument :  
 ECD\_S  
 ClientSampleId :  
 HSTDCCC750



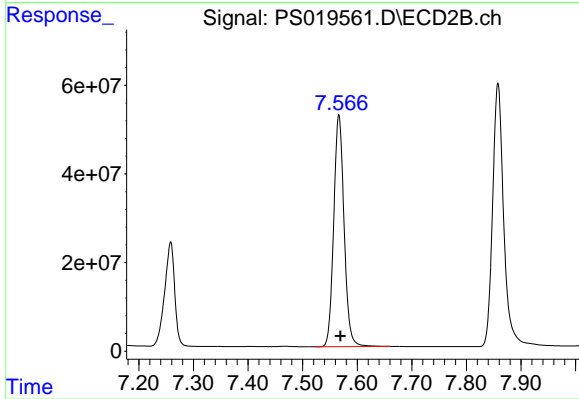
#7 MCPA

R.T.: 7.258 min  
 Delta R.T.: 0.010 min  
 Response: 299205075  
 Conc: 77.87 ug/ml



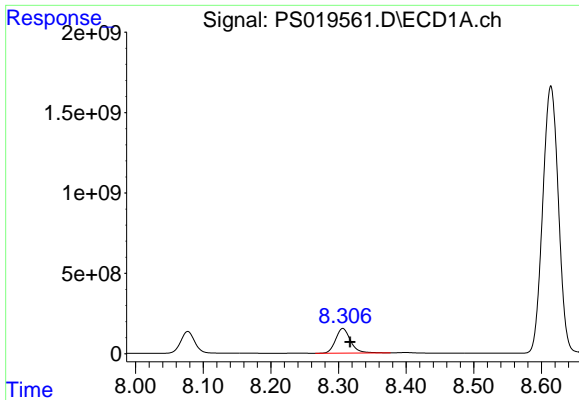
#8 DICHLORPROP

R.T.: 8.077 min  
 Delta R.T.: -0.004 min  
 Response: 1969936730  
 Conc: 769.32 ng/ml



#8 DICHLORPROP

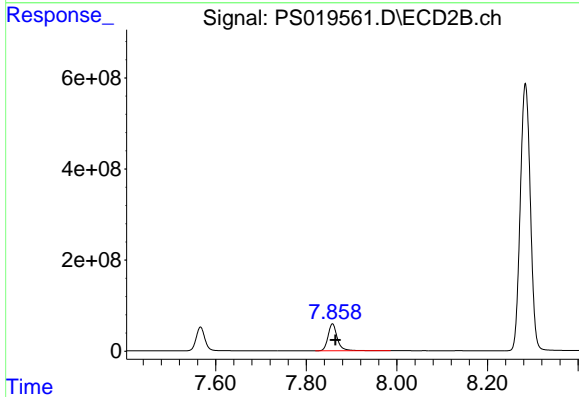
R.T.: 7.566 min  
 Delta R.T.: -0.003 min  
 Response: 689397385  
 Conc: 780.42 ng/ml



#9 2,4-D

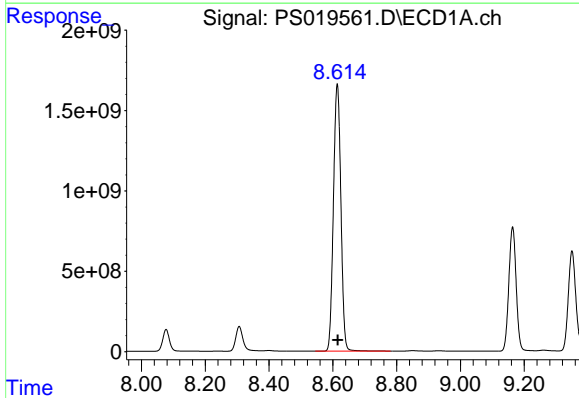
R.T.: 8.306 min  
 Delta R.T.: -0.011 min  
 Response: 2347424630  
 Conc: 820.92 ng/ml

Instrument :  
 ECD\_S  
 ClientSampleId :  
 HSTDCCC750



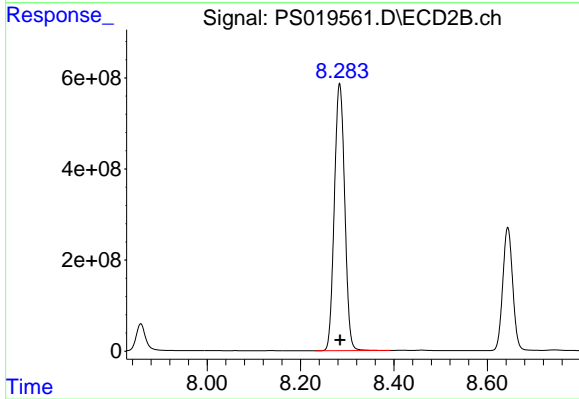
#9 2,4-D

R.T.: 7.858 min  
 Delta R.T.: -0.006 min  
 Response: 840685555  
 Conc: 788.17 ng/ml



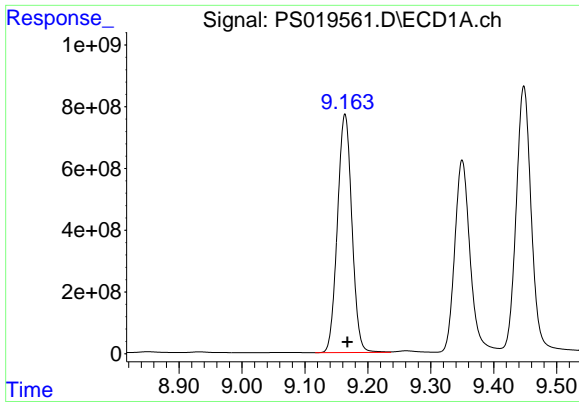
#10 Pentachlorophenol

R.T.: 8.614 min  
 Delta R.T.: -0.001 min  
 Response: 26849981344  
 Conc: 776.26 ng/ml



#10 Pentachlorophenol

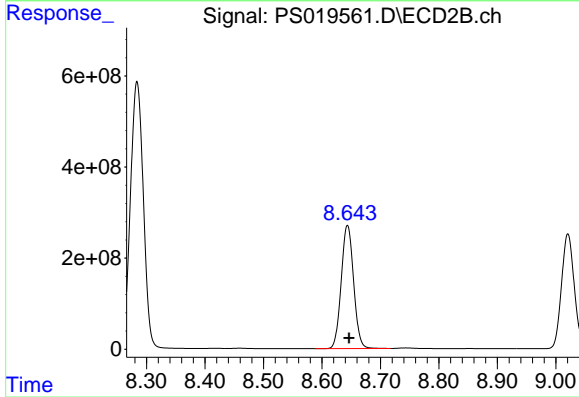
R.T.: 8.284 min  
 Delta R.T.: 0.000 min  
 Response: 9021482847  
 Conc: 773.96 ng/ml



#11 2,4,5-TP (SILVEX)

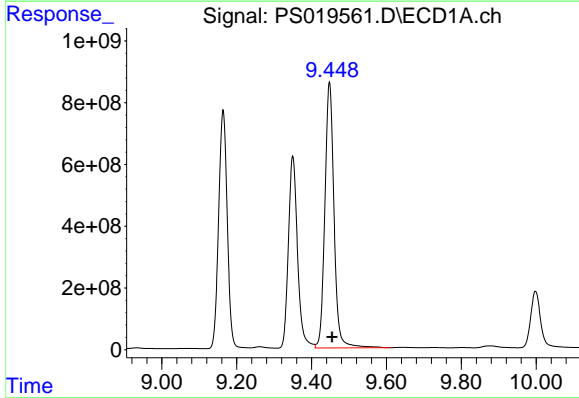
R.T.: 9.164 min  
 Delta R.T.: -0.004 min  
 Response: 12312584136  
 Conc: 784.19 ng/ml

Instrument :  
 ECD\_S  
 ClientSampleId :  
 HSTDCCC750



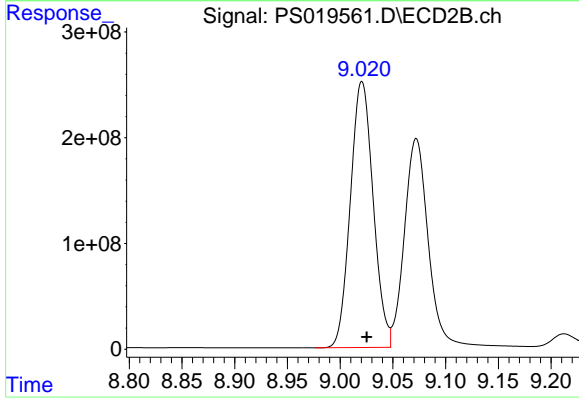
#11 2,4,5-TP (SILVEX)

R.T.: 8.644 min  
 Delta R.T.: -0.003 min  
 Response: 3970486080  
 Conc: 789.81 ng/ml



#12 2,4,5-T

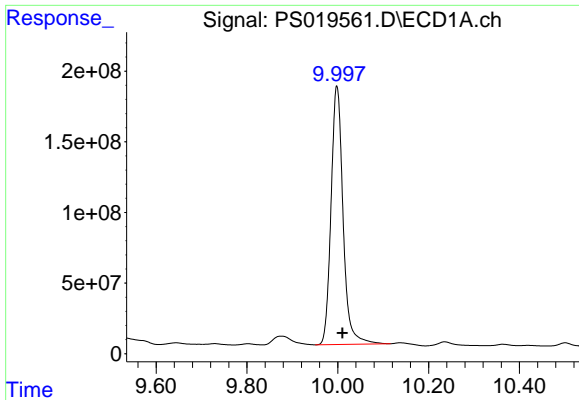
R.T.: 9.448 min  
 Delta R.T.: -0.007 min  
 Response: 14608898663  
 Conc: 776.26 ng/ml



#12 2,4,5-T

R.T.: 9.021 min  
 Delta R.T.: -0.005 min  
 Response: 3788148086  
 Conc: 805.44 ng/ml

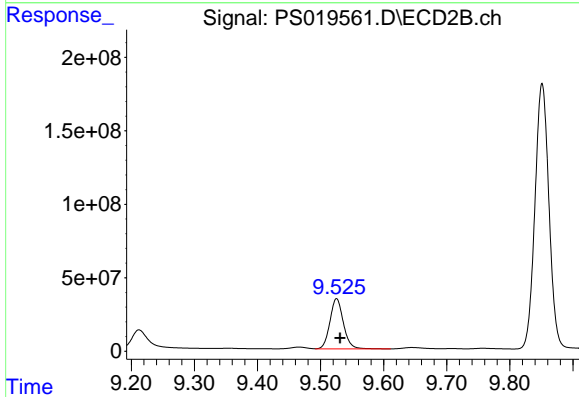




#13 2,4-DB

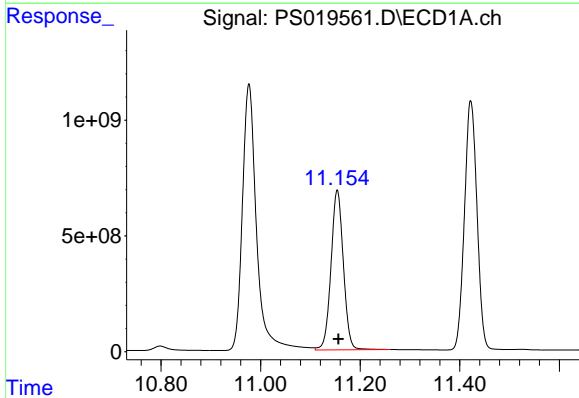
R.T.: 9.998 min  
 Delta R.T.: -0.012 min  
 Response: 3359738263  
 Conc: 830.38 ng/ml

Instrument :  
 ECD\_S  
 ClientSampleId :  
 HSTDCCC750



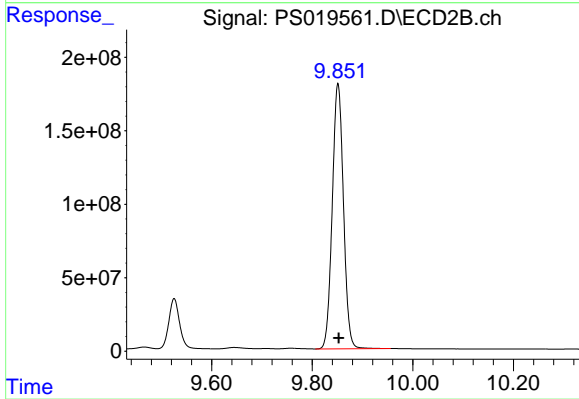
#13 2,4-DB

R.T.: 9.525 min  
 Delta R.T.: -0.005 min  
 Response: 504153575  
 Conc: 815.83 ng/ml



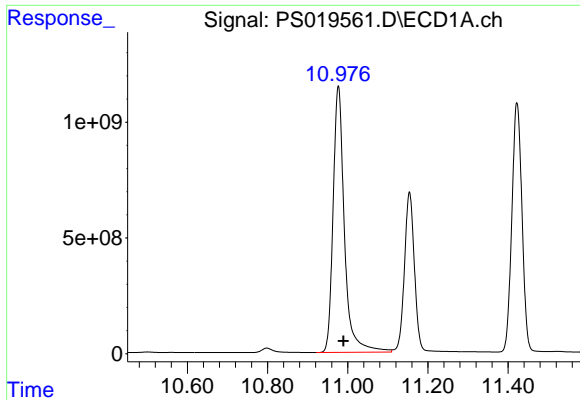
#14 DINOSEB

R.T.: 11.154 min  
 Delta R.T.: -0.002 min  
 Response: 11869031972  
 Conc: 767.37 ng/ml



#14 DINOSEB

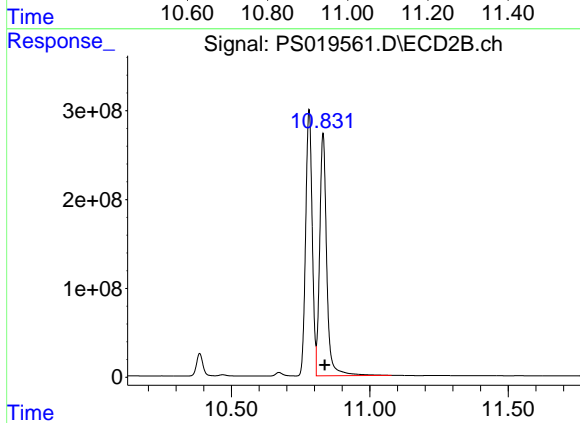
R.T.: 9.851 min  
 Delta R.T.: -0.002 min  
 Response: 2784369734  
 Conc: 783.75 ng/ml



#15 Picloram

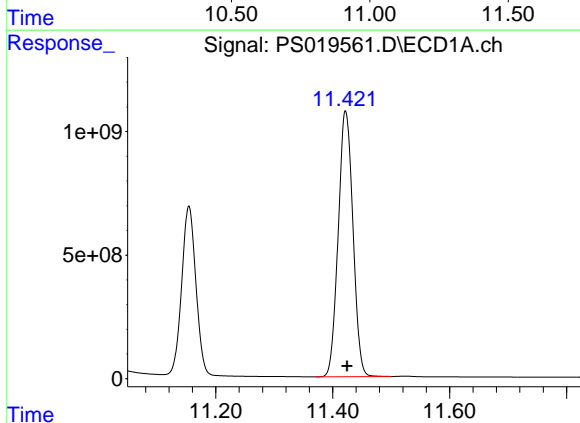
R.T.: 10.977 min  
 Delta R.T.: -0.013 min  
 Response: 22594580588  
 Conc: 761.34 ng/ml

Instrument :  
 ECD\_S  
 ClientSampleId :  
 HSTDCCC750



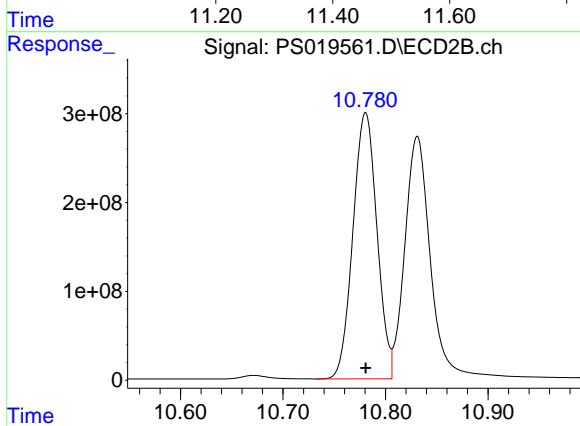
#15 Picloram

R.T.: 10.831 min  
 Delta R.T.: -0.006 min  
 Response: 4838258705  
 Conc: 752.19 ng/ml



#16 DCPA

R.T.: 11.422 min  
 Delta R.T.: -0.002 min  
 Response: 18791767099  
 Conc: 779.61 ng/ml



#16 DCPA

R.T.: 10.781 min  
 Delta R.T.: 0.000 min  
 Response: 4879394636  
 Conc: 790.51 ng/ml