

Data Path : Z:\pestpcbsrv\HPCHEM1\ECD\_S\Data\PS052925\  
 Data File : PS030432.D  
 Signal(s) : Signal #1: ECD1A.ch Signal #2: ECD2B.ch  
 Acq On : 29 May 2025 15:49  
 Operator : AR\AJ  
 Sample : Q2127-11MSD  
 Misc :  
 ALS Vial : 8 Sample Multiplier: 1

Instrument :  
 ECD\_S  
 ClientSampleId :

Integration File signal 1: autoint1.e  
 Integration File signal 2: autoint2.e  
 Quant Time: May 29 23:27:55 2025  
 Quant Method : Z:\pestpcbsrv\HPCHEM1\ECD\_S\Method\PS051225.M  
 Quant Title : 8080.M  
 QLast Update : Mon May 12 14:29:24 2025  
 Response via : Initial Calibration  
 Integrator: ChemStation

Volume Inj. : 1 µl  
 Signal #1 Phase : ZB-MR2 Signal #2 Phase: ZB-MR2  
 Signal #1 Info : 30M x 0.32mm x0.5 Signal #2 Info : 30M x 0.32mm x 0.25µm

	Compound	RT#1	RT#2	Resp#1	Resp#2	ng/ml	ng/ml
-----							
System Monitoring Compounds							
4) S	2,4-DCAA	6.925	7.440	948.3E6	241.4E6	332.989	301.708
Target Compounds							
1) T	Dalapon	2.439	2.510	1336.8E6	976.7E6	271.959	480.906 #
2) T	3,5-DICHL...	6.131	6.443	1508.9E6	359.7E6	361.800	308.534
3) T	4-Nitroph...	6.716	6.976	680.3E6	314.5E6	329.352	301.223
5) T	DICAMBA	7.101	7.625	3718.4E6	1514.5E6	321.738	320.330
6) T	MCPD	7.278	7.732	165.9E6	41067160	22.778	22.322
7) T	MCPA	7.420	7.960	285.8E6	73902726	27.531	28.018
8) T	DICHLORPROP	7.780	8.316	986.2E6	355.8E6	337.570	301.124
9) T	2,4-D	8.000	8.628	1234.5E6	468.8E6	376.508	363.270
10) T	Pentachlo...	8.277	9.127	14241.1E6	8275.4E6	351.625	335.240
11) T	2,4,5-TP ...	8.840	9.505	5206.9E6	3399.3E6	321.495	345.093
12) T	2,4,5-T	9.122	9.908	5577.9E6	3045.3E6	337.742	330.884
13) T	2,4-DB	9.681	10.465	1106.5E6	352.7E6	423.965	355.439
14) T	DINOSEB	10.838	10.837	954.6E6	507.3E6	83.473	74.247
15) T	Picloram	10.660	11.867f	5840.6E6	8154.6E6	273.093	579.446 #
16) T	DCPA	11.140	11.867	6390.9E6	8154.6E6	320.964	603.575 #
-----							

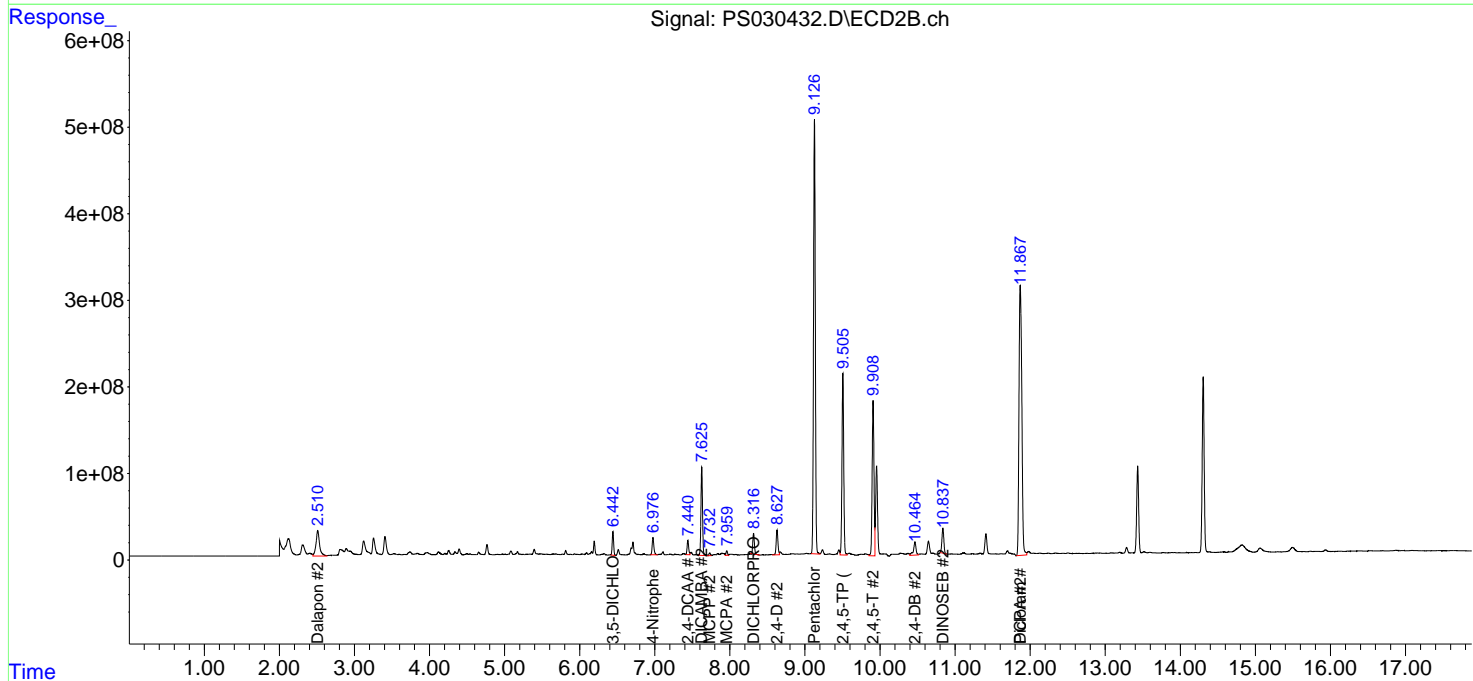
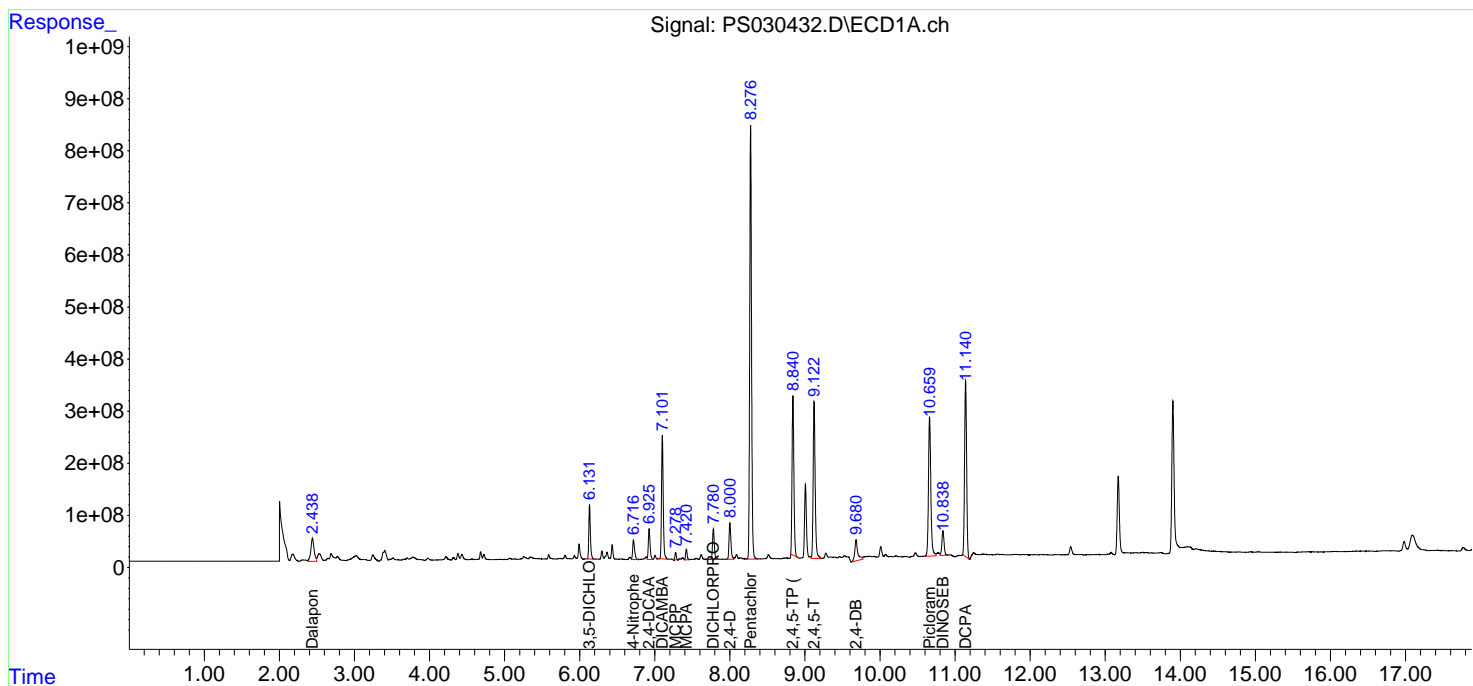
(f)=RT Delta > 1/2 Window (#)=Amounts differ by > 25% (m)=manual int.

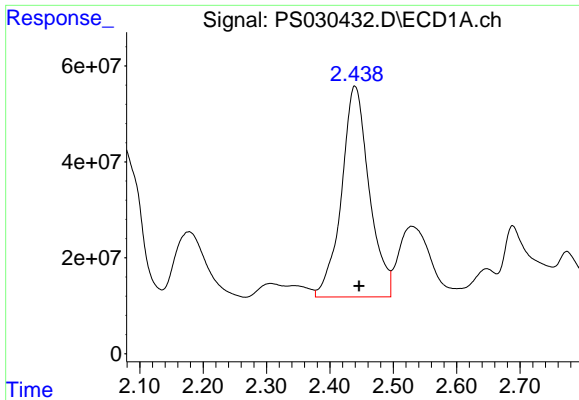
Data Path : Z:\pestpcbsrv\HPCHEM1\ECD\_S\Data\PS052925\  
 Data File : PS030432.D  
 Signal(s) : Signal #1: ECD1A.ch Signal #2: ECD2B.ch  
 Acq On : 29 May 2025 15:49  
 Operator : AR\AJ  
 Sample : Q2127-11MSD  
 Misc :  
 ALS Vial : 8 Sample Multiplier: 1

Instrument :  
 ECD\_S  
 ClientSampleId :

Integration File signal 1: autoint1.e  
 Integration File signal 2: autoint2.e  
 Quant Time: May 29 23:27:55 2025  
 Quant Method : Z:\pestpcbsrv\HPCHEM1\ECD\_S\Method\PS051225.M  
 Quant Title : 8080.M  
 QLast Update : Mon May 12 14:29:24 2025  
 Response via : Initial Calibration  
 Integrator: ChemStation

Volume Inj. : 1 µl  
 Signal #1 Phase : ZB-MR1 Signal #2 Phase: ZB-MR2  
 Signal #1 Info : 30M x 0.32mm x0.5 Signal #2 Info : 30M x 0.32mm x 0.25µm

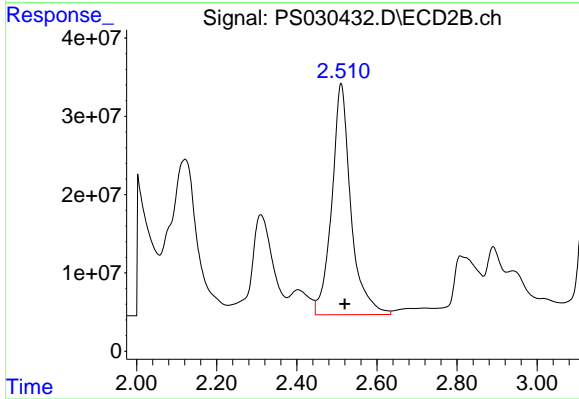




#1 Dalapon

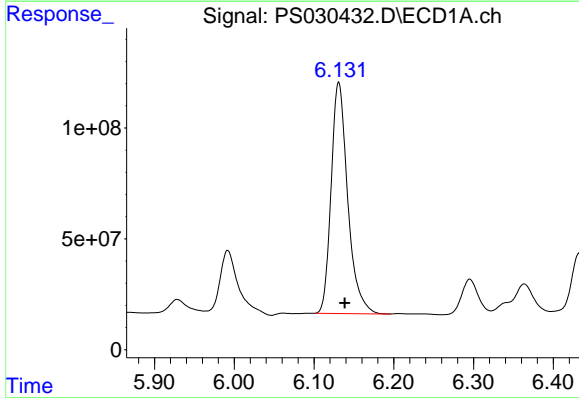
R.T.: 2.439 min  
Delta R.T.: -0.007 min  
Response: 1336774494  
Conc: 271.96 ng/ml

Instrument :  
ECD\_S  
ClientSampleId :



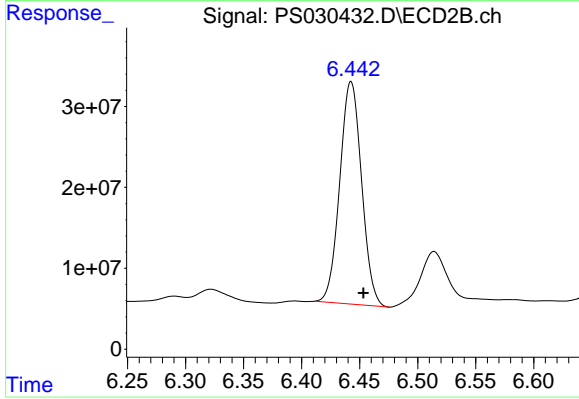
#1 Dalapon

R.T.: 2.510 min  
Delta R.T.: -0.010 min  
Response: 976745049  
Conc: 480.91 ng/ml



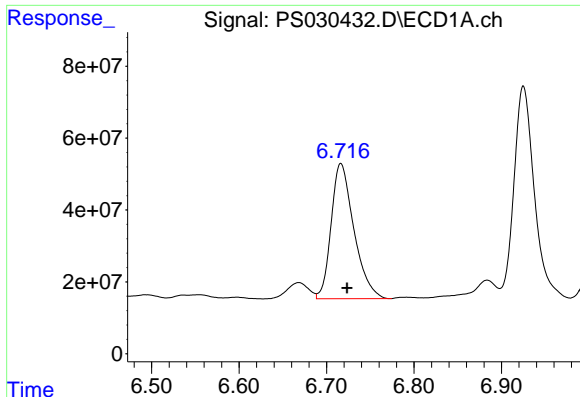
#2 3,5-DICHLOROBENZOIC ACID

R.T.: 6.131 min  
Delta R.T.: -0.008 min  
Response: 1508906515  
Conc: 361.80 ng/ml



#2 3,5-DICHLOROBENZOIC ACID

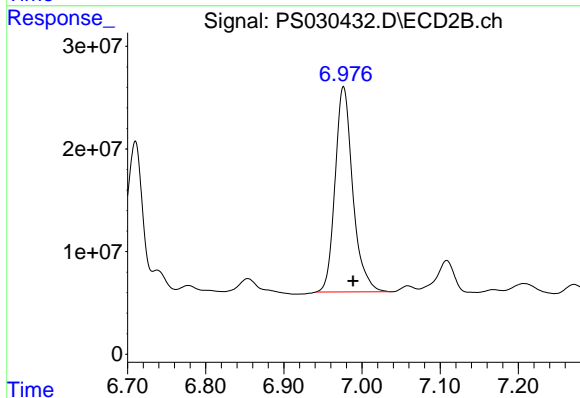
R.T.: 6.443 min  
Delta R.T.: -0.011 min  
Response: 359697880  
Conc: 308.53 ng/ml



#3 4-Nitrophenol

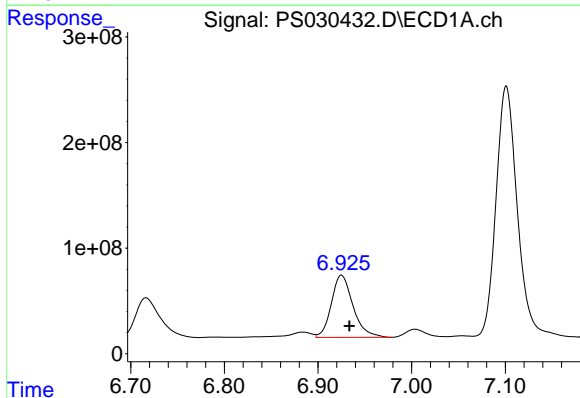
R.T.: 6.716 min  
Delta R.T.: -0.007 min  
Response: 680314117  
Conc: 329.35 ng/ml

Instrument :  
ECD\_S  
ClientSampleId :



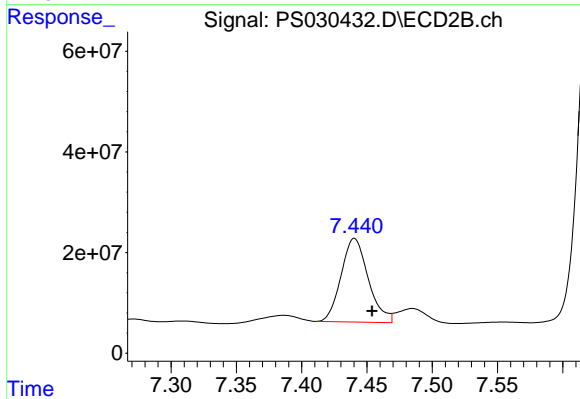
#3 4-Nitrophenol

R.T.: 6.976 min  
Delta R.T.: -0.012 min  
Response: 314486283  
Conc: 301.22 ng/ml



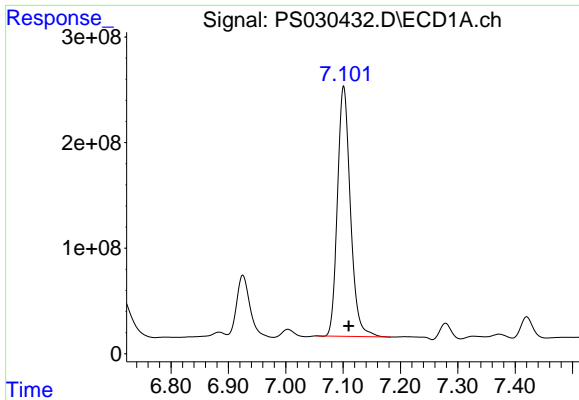
#4 2,4-DCAA

R.T.: 6.925 min  
Delta R.T.: -0.009 min  
Response: 948289739  
Conc: 332.99 ng/ml



#4 2,4-DCAA

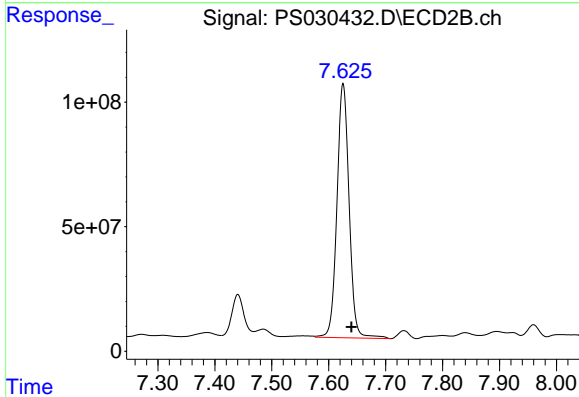
R.T.: 7.440 min  
Delta R.T.: -0.014 min  
Response: 241427948  
Conc: 301.71 ng/ml



#5 DICAMBA

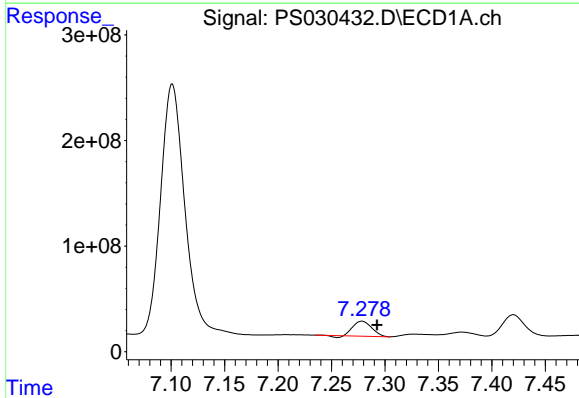
R.T.: 7.101 min  
 Delta R.T.: -0.009 min  
 Response: 3718437764  
 Conc: 321.74 ng/ml

Instrument :  
 ECD\_S  
 ClientSampleId :



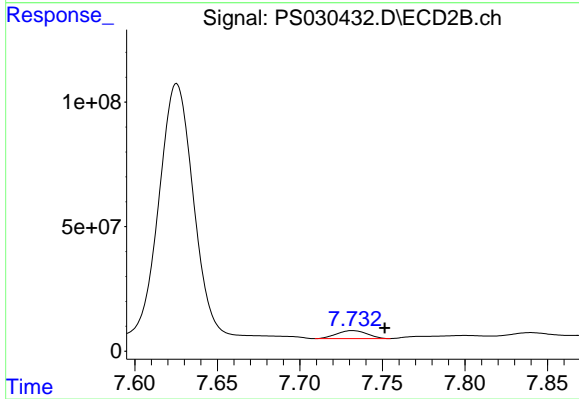
#5 DICAMBA

R.T.: 7.625 min  
 Delta R.T.: -0.014 min  
 Response: 1514514425  
 Conc: 320.33 ng/ml



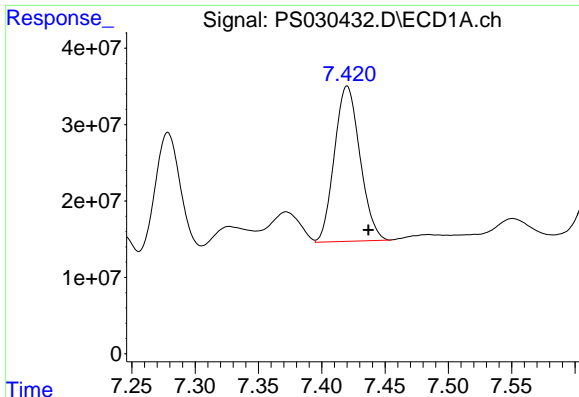
#6 MCP

R.T.: 7.278 min  
 Delta R.T.: -0.014 min  
 Response: 165883294  
 Conc: 22.78 ug/ml



#6 MCP

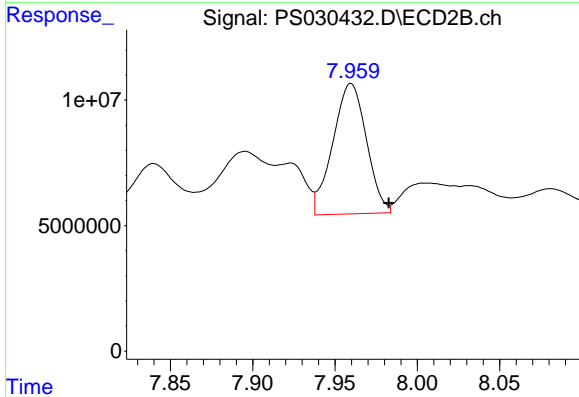
R.T.: 7.732 min  
 Delta R.T.: -0.019 min  
 Response: 41067160  
 Conc: 22.32 ug/ml



#7 MCPA

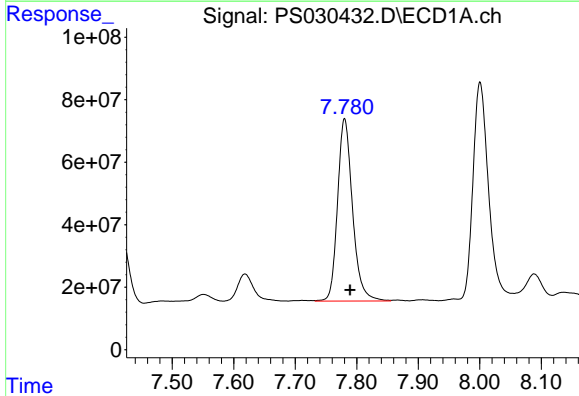
R.T.: 7.420 min  
 Delta R.T.: -0.017 min  
 Response: 285799157  
 Conc: 27.53 ug/ml

Instrument :  
 ECD\_S  
 ClientSampleId :



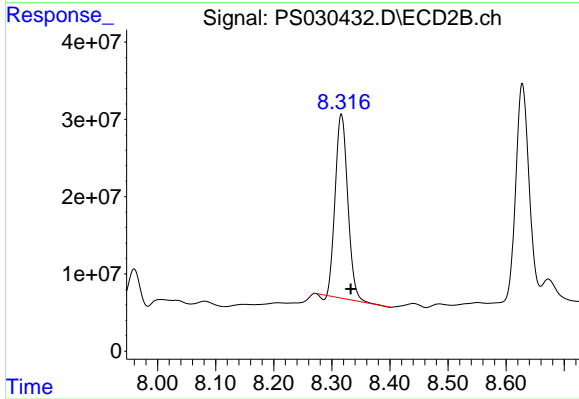
#7 MCPA

R.T.: 7.960 min  
 Delta R.T.: -0.023 min  
 Response: 73902726  
 Conc: 28.02 ug/ml



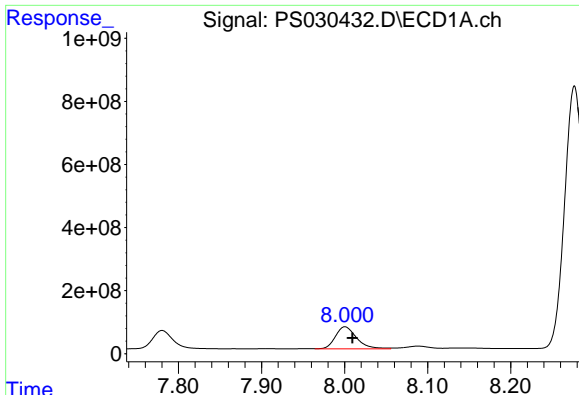
#8 DICHLORPROP

R.T.: 7.780 min  
 Delta R.T.: -0.009 min  
 Response: 986157568  
 Conc: 337.57 ng/ml



#8 DICHLORPROP

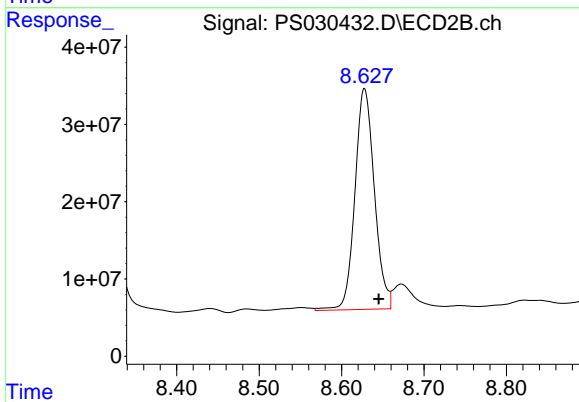
R.T.: 8.316 min  
 Delta R.T.: -0.016 min  
 Response: 355758123  
 Conc: 301.12 ng/ml



#9 2,4-D

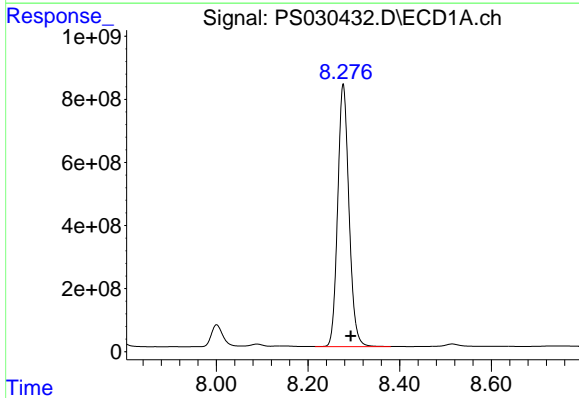
R.T.: 8.000 min  
Delta R.T.: -0.009 min  
Response: 1234546677  
Conc: 376.51 ng/ml

Instrument :  
ECD\_S  
ClientSampleId :



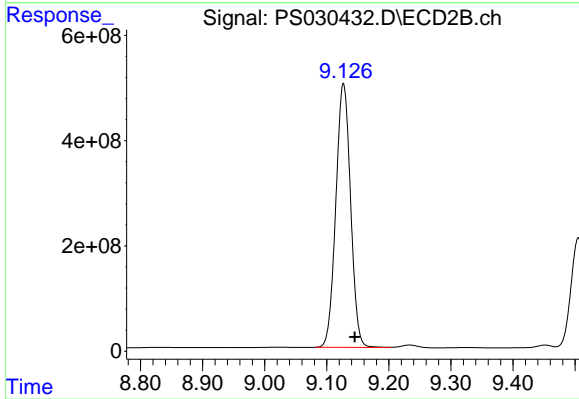
#9 2,4-D

R.T.: 8.628 min  
Delta R.T.: -0.017 min  
Response: 468800363  
Conc: 363.27 ng/ml



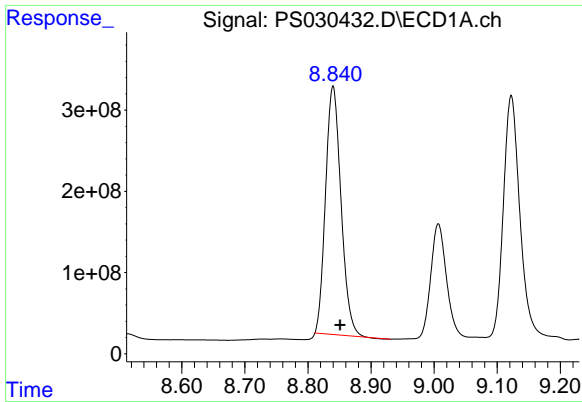
#10 Pentachlorophenol

R.T.: 8.277 min  
Delta R.T.: -0.016 min  
Response: 14241096207  
Conc: 351.63 ng/ml



#10 Pentachlorophenol

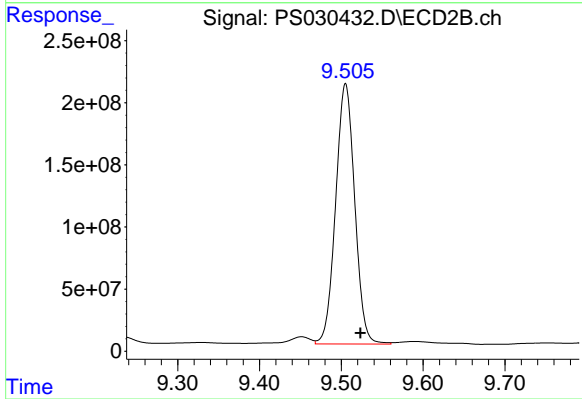
R.T.: 9.127 min  
Delta R.T.: -0.018 min  
Response: 8275392125  
Conc: 335.24 ng/ml



#11 2,4,5-TP (SILVEX)

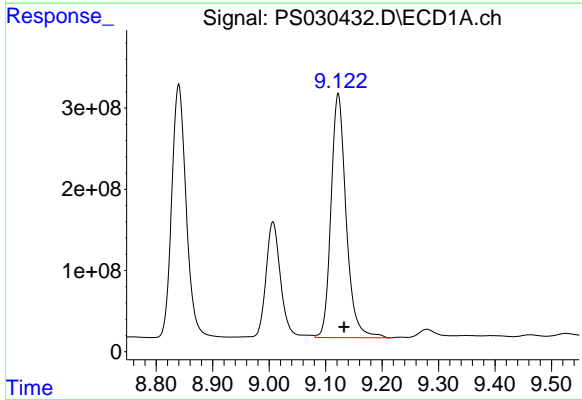
R.T.: 8.840 min  
 Delta R.T.: -0.011 min  
 Response: 5206931743  
 Conc: 321.50 ng/ml

Instrument :  
 ECD\_S  
 ClientSampleId :



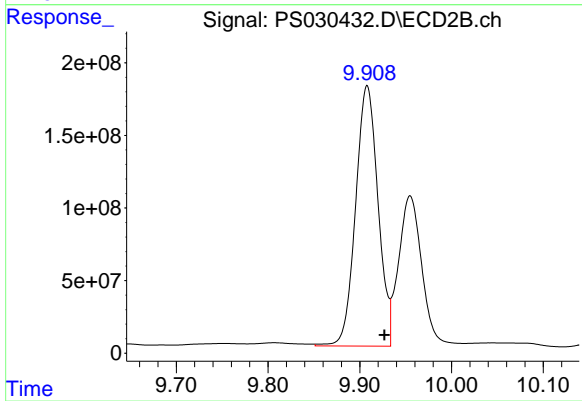
#11 2,4,5-TP (SILVEX)

R.T.: 9.505 min  
 Delta R.T.: -0.018 min  
 Response: 3399318864  
 Conc: 345.09 ng/ml



#12 2,4,5-T

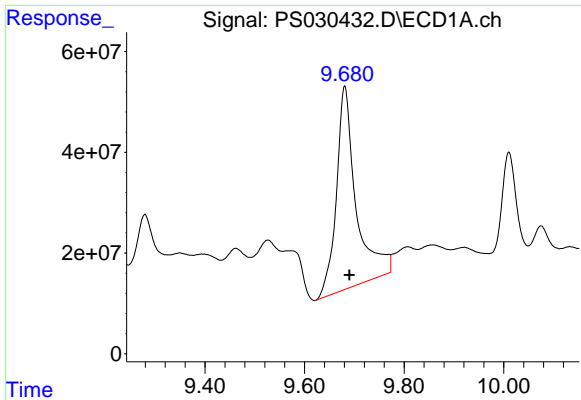
R.T.: 9.122 min  
 Delta R.T.: -0.011 min  
 Response: 5577877021  
 Conc: 337.74 ng/ml



#12 2,4,5-T

R.T.: 9.908 min  
 Delta R.T.: -0.019 min  
 Response: 3045324705  
 Conc: 330.88 ng/ml

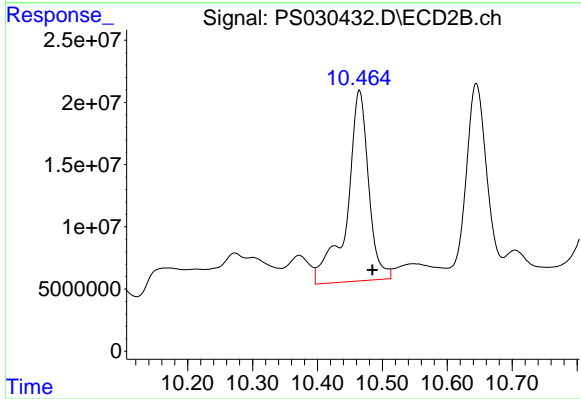




#13 2,4-DB

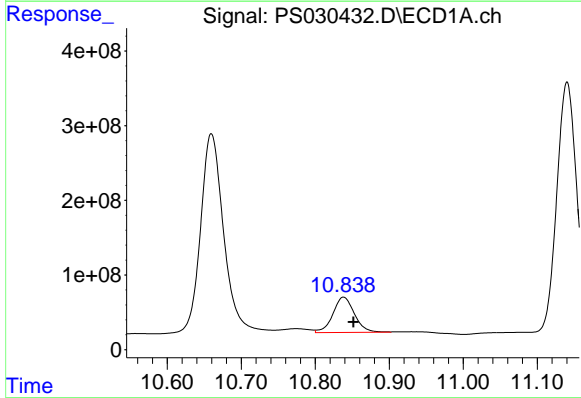
R.T.: 9.681 min  
 Delta R.T.: -0.009 min  
 Response: 1106452902  
 Conc: 423.97 ng/ml

Instrument :  
 ECD\_S  
 ClientSampleId :



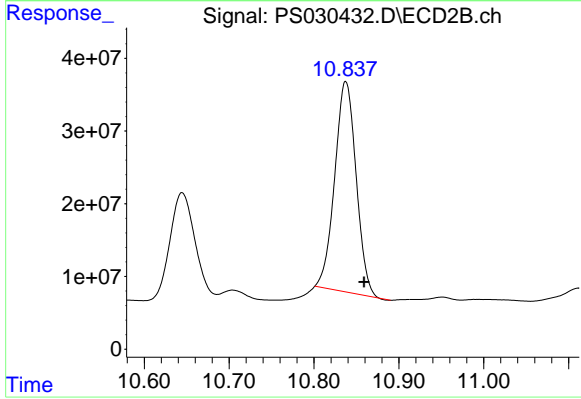
#13 2,4-DB

R.T.: 10.465 min  
 Delta R.T.: -0.020 min  
 Response: 352728074  
 Conc: 355.44 ng/ml



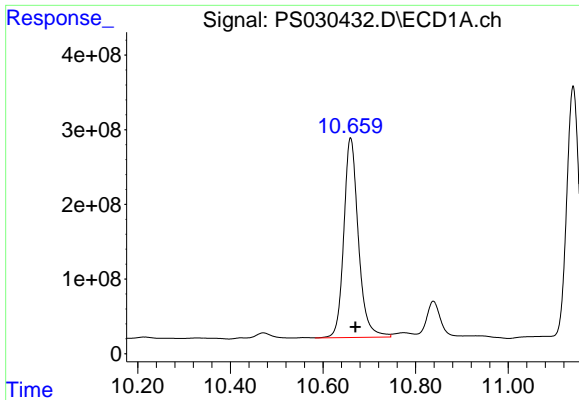
#14 DINOSEB

R.T.: 10.838 min  
 Delta R.T.: -0.013 min  
 Response: 954623506  
 Conc: 83.47 ng/ml



#14 DINOSEB

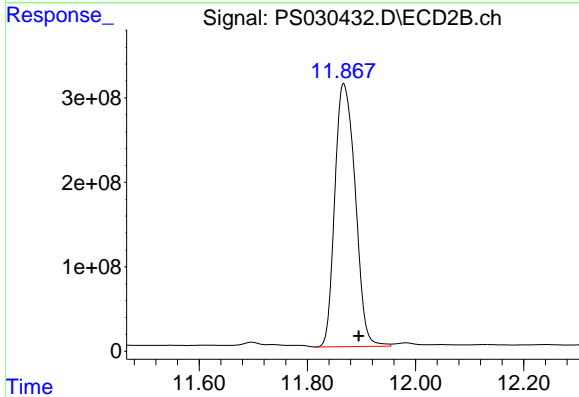
R.T.: 10.837 min  
 Delta R.T.: -0.021 min  
 Response: 507254008  
 Conc: 74.25 ng/ml



#15 Picloram

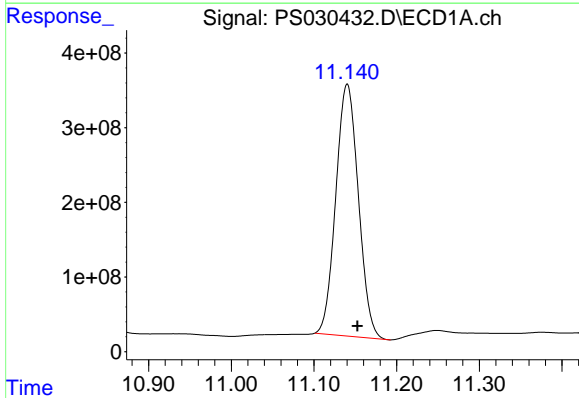
R.T.: 10.660 min  
 Delta R.T.: -0.011 min  
 Response: 5840631193  
 Conc: 273.09 ng/ml

Instrument :  
 ECD\_S  
 ClientSampleId :



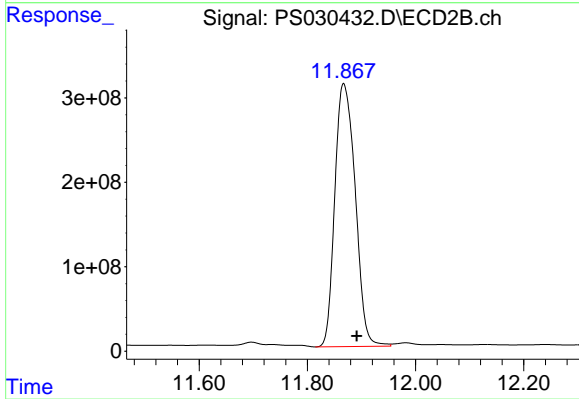
#15 Picloram

R.T.: 11.867 min  
 Delta R.T.: -0.028 min  
 Response: 8154606571  
 Conc: 579.45 ng/ml



#16 DCPA

R.T.: 11.140 min  
 Delta R.T.: -0.012 min  
 Response: 6390864964  
 Conc: 320.96 ng/ml



#16 DCPA

R.T.: 11.867 min  
 Delta R.T.: -0.024 min  
 Response: 8154606571  
 Conc: 603.57 ng/ml