

Data Path : Z:\pestpcbsrv\HPCHEM1\ECD_S\Data\PS052925\
 Data File : PS030434.D
 Signal(s) : Signal #1: ECD1A.ch Signal #2: ECD2B.ch
 Acq On : 29 May 2025 16:37
 Operator : AR\AJ
 Sample : HSTDCCC750
 Misc :
 ALS Vial : 3 Sample Multiplier: 1

Instrument :
 ECD_S
 ClientSampleId :

Integration File signal 1: autoint1.e
 Integration File signal 2: autoint2.e
 Quant Time: May 29 23:28:18 2025
 Quant Method : Z:\pestpcbsrv\HPCHEM1\ECD_S\Method\PS051225.M
 Quant Title : 8080.M
 QLast Update : Mon May 12 14:29:24 2025
 Response via : Initial Calibration
 Integrator: ChemStation

Volume Inj. : 1 µl
 Signal #1 Phase : ZB-MR1 Signal #2 Phase: ZB-MR2
 Signal #1 Info : 30M x 0.32mm x0.5 Signal #2 Info : 30M x 0.32mm x 0.25µm

Compound	RT#1	RT#2	Resp#1	Resp#2	ng/ml	ng/ml
System Monitoring Compounds						
4) S 2,4-DCAA	6.925	7.442	2113.6E6	568.9E6	742.198	710.889
Target Compounds						
1) T Dalapon	2.442	2.515	3302.2E6	1309.7E6	671.811	644.861
2) T 3,5-DICHL...	6.131	6.444	2881.5E6	746.5E6	690.905	640.358
3) T 4-Nitroph...	6.716	6.977	1422.6E6	666.4E6	688.693	638.284
5) T DICAMBA	7.101	7.626	8243.9E6	3322.3E6	713.302	702.682
6) T MCPP	7.281	7.735	553.3E6	121.5E6	75.969	66.049
7) T MCPA	7.423	7.964	727.2E6	169.9E6	70.053	64.418
8) T DICHLORPROP	7.780	8.317	2044.7E6	795.0E6	699.931	672.936
9) T 2,4-D	8.000	8.629	2318.0E6	897.5E6	706.924	695.446
10) T Pentachlo...	8.277	9.128	29651.0E6	18084.1E6	732.110	732.596
11) T 2,4,5-TP ...	8.840	9.505	11131.1E6	7112.1E6	687.276	722.005
12) T 2,4,5-T	9.122	9.908	12000.8E6	6551.0E6	726.652	711.788
13) T 2,4-DB	9.679	10.466	2014.2E6	602.2E6	771.795	606.825
14) T DINOSEB	10.839	10.839	8089.9E6	4760.7E6	707.385	696.831
15) T Picloram	10.659	11.872	15581.6E6	20596.1E6	728.556	1463.504 #
16) T DCPA	11.140	11.872	14321.5E6	20596.1E6	719.258	1524.446 #

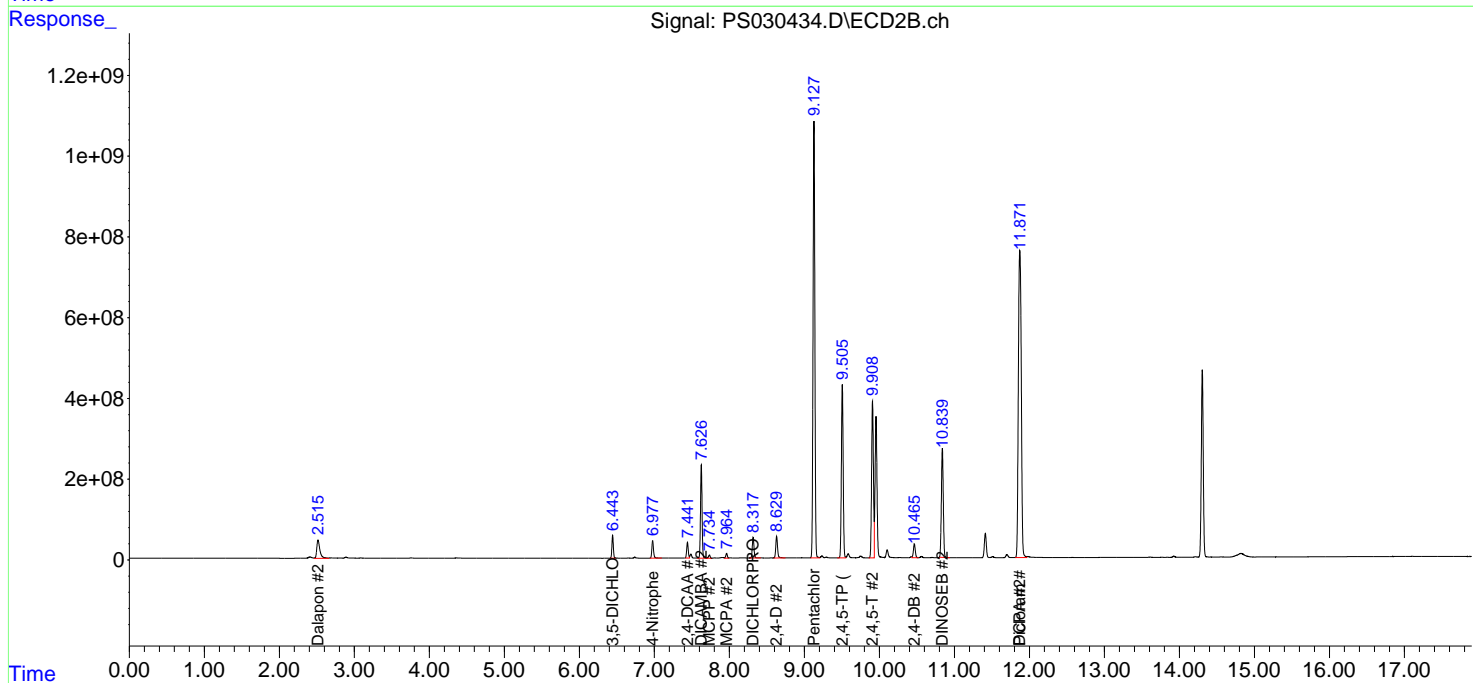
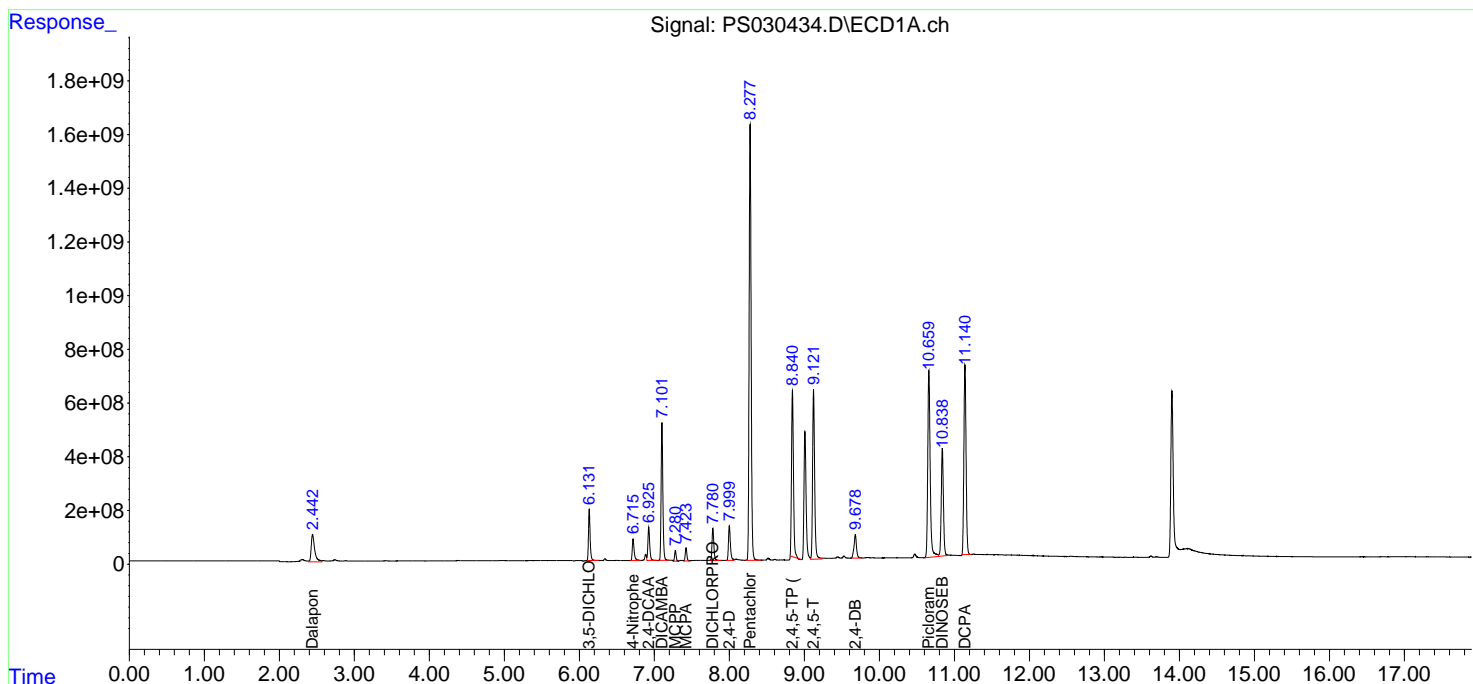
(f)=RT Delta > 1/2 Window (#)=Amounts differ by > 25% (m)=manual int.

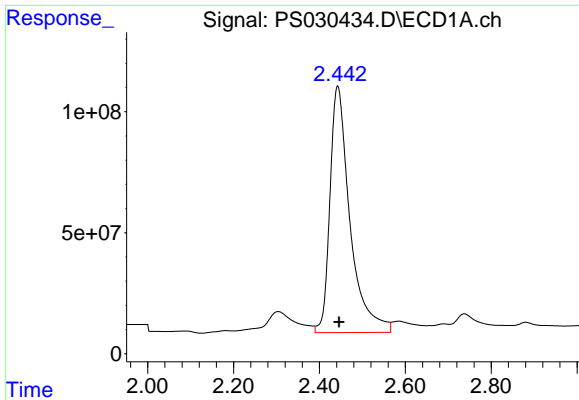
Data Path : Z:\pestpcbsrv\HPCHEM1\ECD_S\Data\PS052925\
 Data File : PS030434.D
 Signal(s) : Signal #1: ECD1A.ch Signal #2: ECD2B.ch
 Acq On : 29 May 2025 16:37
 Operator : AR\AJ
 Sample : HSTDCCC750
 Misc :
 ALS Vial : 3 Sample Multiplier: 1

Instrument :
 ECD_S
 ClientSampleId :

Integration File signal 1: autoint1.e
 Integration File signal 2: autoint2.e
 Quant Time: May 29 23:28:18 2025
 Quant Method : Z:\pestpcbsrv\HPCHEM1\ECD_S\Method\PS051225.M
 Quant Title : 8080.M
 QLast Update : Mon May 12 14:29:24 2025
 Response via : Initial Calibration
 Integrator: ChemStation

Volume Inj. : 1 µl
 Signal #1 Phase : ZB-MR1 Signal #2 Phase: ZB-MR2
 Signal #1 Info : 30M x 0.32mm x0.5 Signal #2 Info : 30M x 0.32mm x 0.25µm

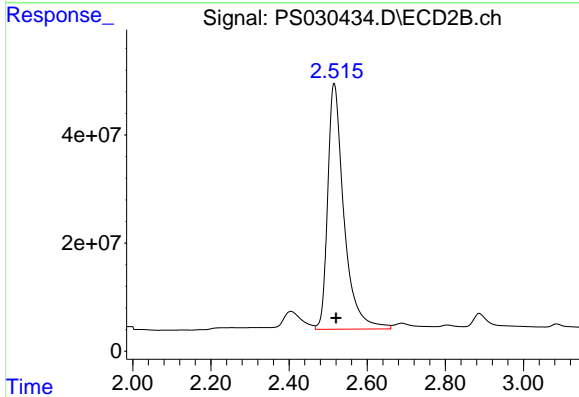




#1 Dalapon

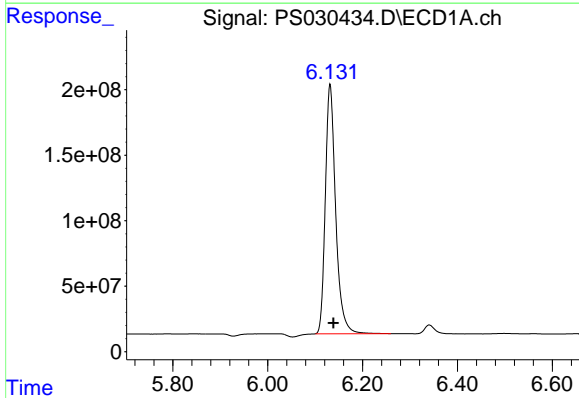
R.T.: 2.442 min
 Delta R.T.: -0.004 min
 Response: 3302193044
 Conc: 671.81 ng/ml

Instrument :
 ECD_S
 ClientSampleId :



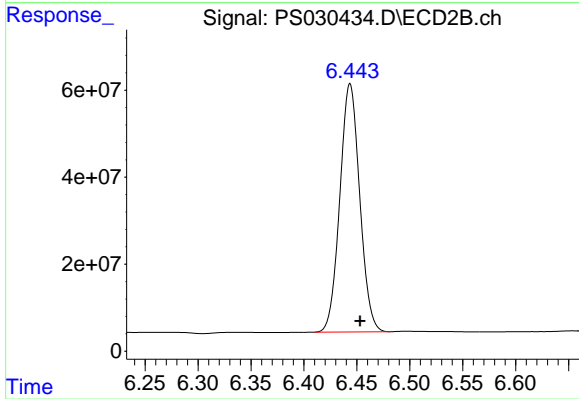
#1 Dalapon

R.T.: 2.515 min
 Delta R.T.: -0.005 min
 Response: 1309744568
 Conc: 644.86 ng/ml



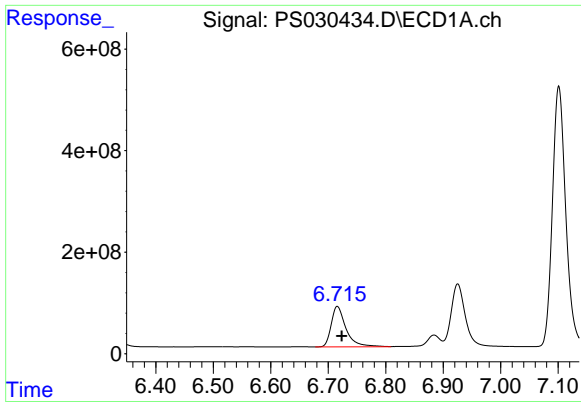
#2 3,5-DICHLOROBENZOIC ACID

R.T.: 6.131 min
 Delta R.T.: -0.007 min
 Response: 2881454887
 Conc: 690.90 ng/ml



#2 3,5-DICHLOROBENZOIC ACID

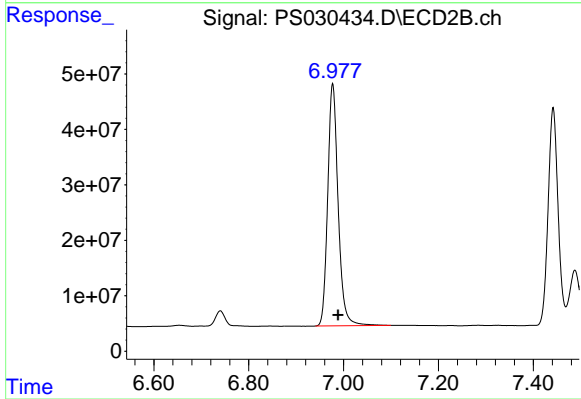
R.T.: 6.444 min
 Delta R.T.: -0.010 min
 Response: 746547941
 Conc: 640.36 ng/ml



#3 4-Nitrophenol

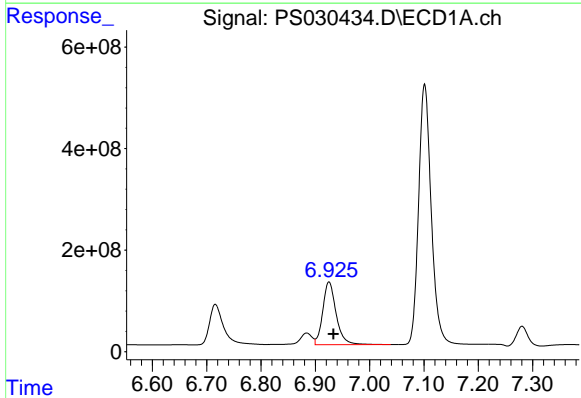
R.T.: 6.716 min
 Delta R.T.: -0.008 min
 Response: 1422574127
 Conc: 688.69 ng/ml

Instrument :
 ECD_S
 ClientSampleId :



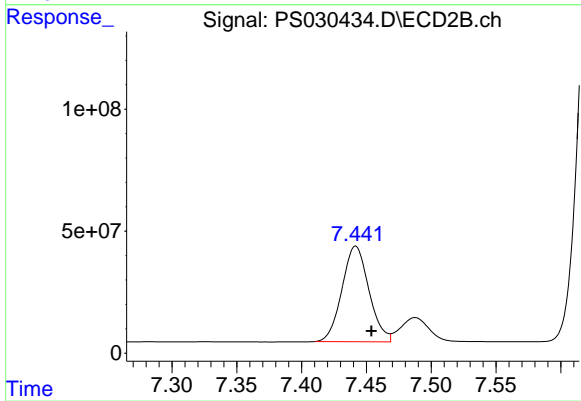
#3 4-Nitrophenol

R.T.: 6.977 min
 Delta R.T.: -0.011 min
 Response: 666388850
 Conc: 638.28 ng/ml



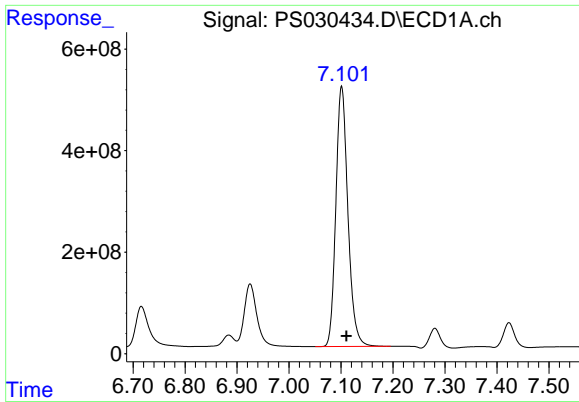
#4 2,4-DCAA

R.T.: 6.925 min
 Delta R.T.: -0.008 min
 Response: 2113638282
 Conc: 742.20 ng/ml



#4 2,4-DCAA

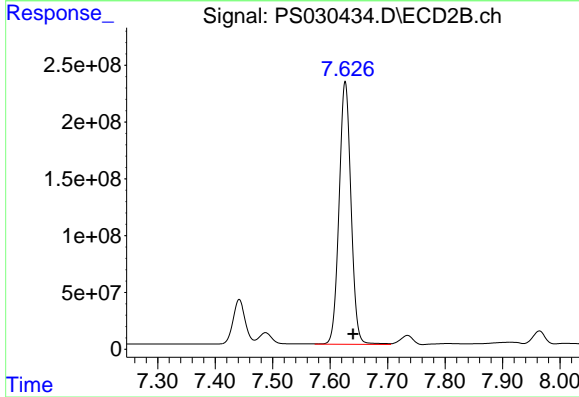
R.T.: 7.442 min
 Delta R.T.: -0.012 min
 Response: 568855869
 Conc: 710.89 ng/ml



#5 DICAMBA

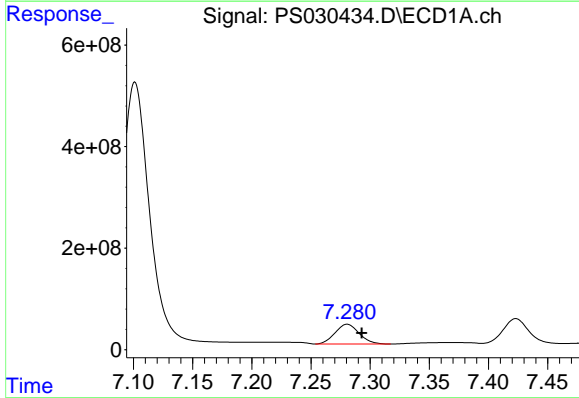
R.T.: 7.101 min
 Delta R.T.: -0.009 min
 Response: 8243895632
 Conc: 713.30 ng/ml

Instrument :
 ECD_S
 ClientSampleId :



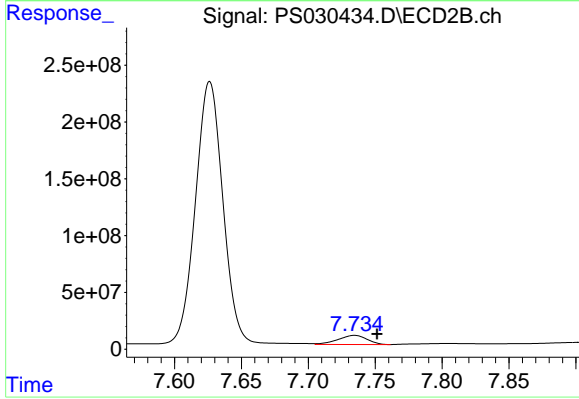
#5 DICAMBA

R.T.: 7.626 min
 Delta R.T.: -0.014 min
 Response: 3322264130
 Conc: 702.68 ng/ml



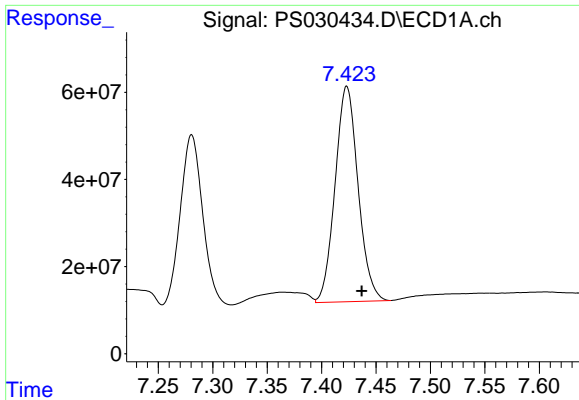
#6 MCP

R.T.: 7.281 min
 Delta R.T.: -0.012 min
 Response: 553256984
 Conc: 75.97 ug/ml



#6 MCP

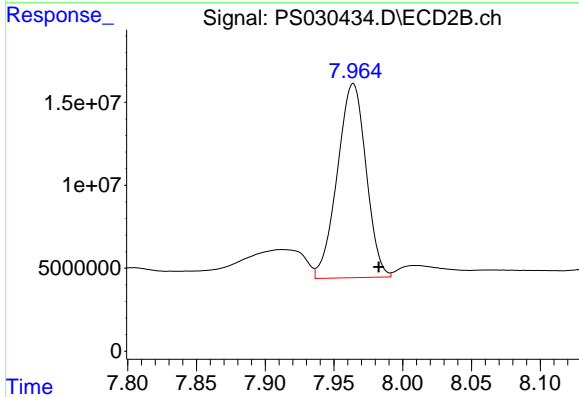
R.T.: 7.735 min
 Delta R.T.: -0.017 min
 Response: 121514505
 Conc: 66.05 ug/ml



#7 MCPA

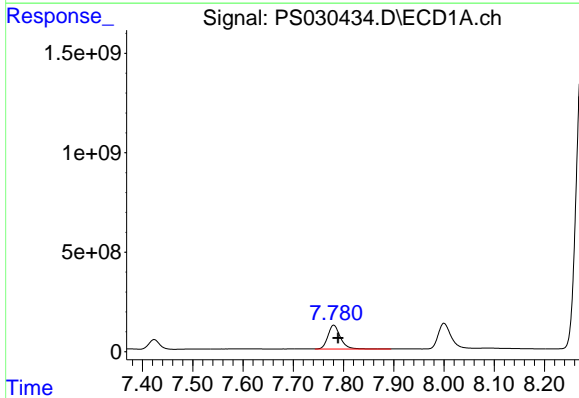
R.T.: 7.423 min
 Delta R.T.: -0.014 min
 Response: 727212186
 Conc: 70.05 ug/ml

Instrument :
 ECD_S
 ClientSampleId :



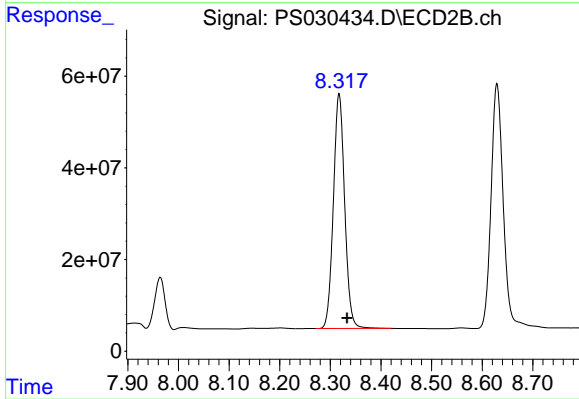
#7 MCPA

R.T.: 7.964 min
 Delta R.T.: -0.019 min
 Response: 169913204
 Conc: 64.42 ug/ml



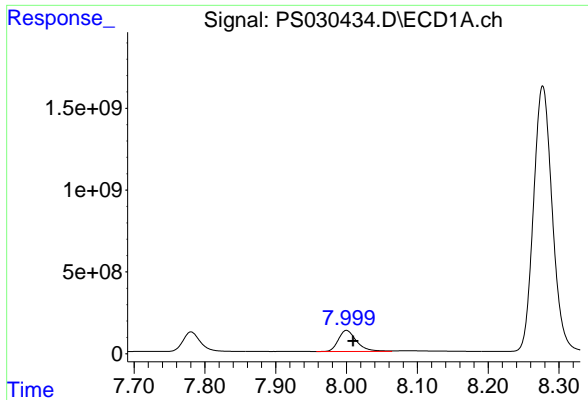
#8 DICHLORPROP

R.T.: 7.780 min
 Delta R.T.: -0.009 min
 Response: 2044738229
 Conc: 699.93 ng/ml



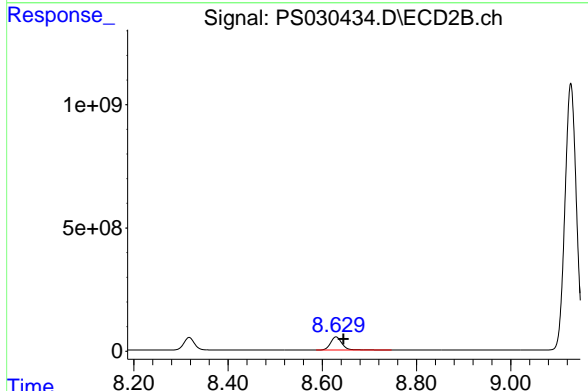
#8 DICHLORPROP

R.T.: 8.317 min
 Delta R.T.: -0.015 min
 Response: 795029434
 Conc: 672.94 ng/ml

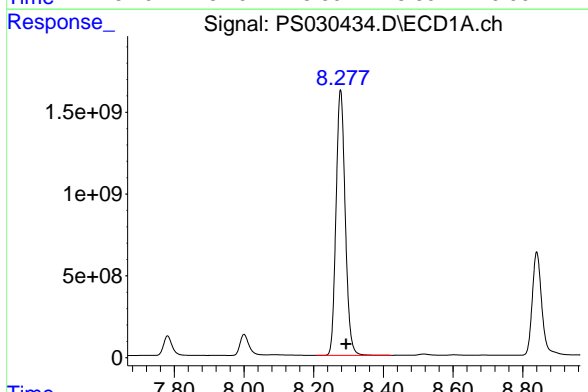


#9 2,4-D
 R.T.: 8.000 min
 Delta R.T.: -0.009 min
 Response: 2317957601
 Conc: 706.92 ng/ml

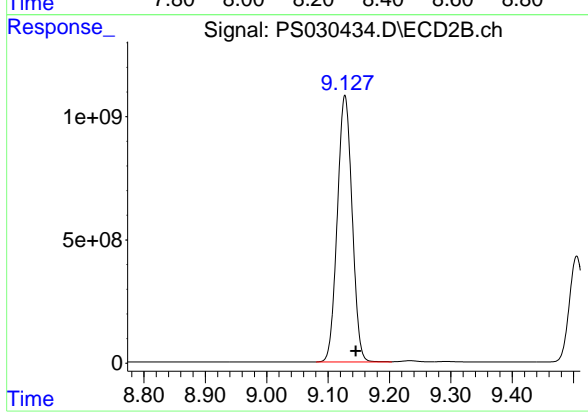
Instrument :
 ECD_S
 ClientSampleId :



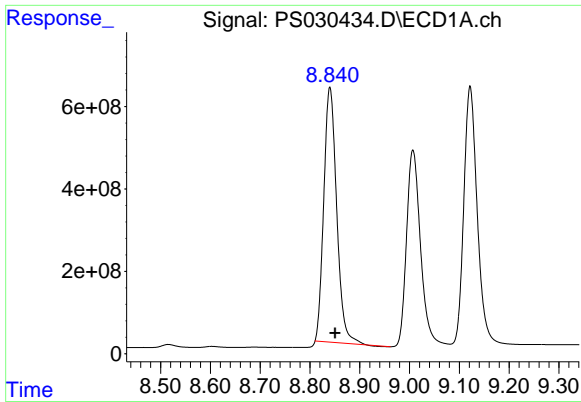
#9 2,4-D
 R.T.: 8.629 min
 Delta R.T.: -0.016 min
 Response: 897473934
 Conc: 695.45 ng/ml



#10 Pentachlorophenol
 R.T.: 8.277 min
 Delta R.T.: -0.016 min
 Response: 29651024883
 Conc: 732.11 ng/ml



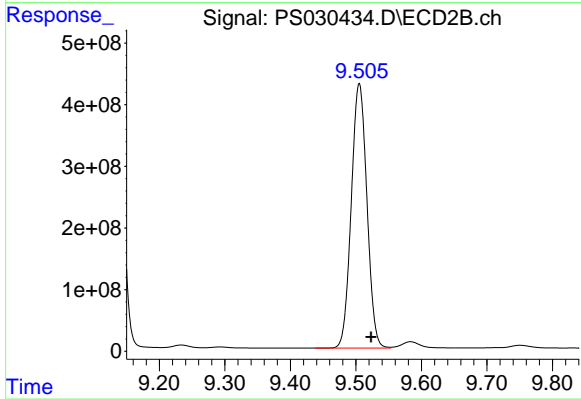
#10 Pentachlorophenol
 R.T.: 9.128 min
 Delta R.T.: -0.018 min
 Response: 18084095642
 Conc: 732.60 ng/ml



#11 2,4,5-TP (SILVEX)

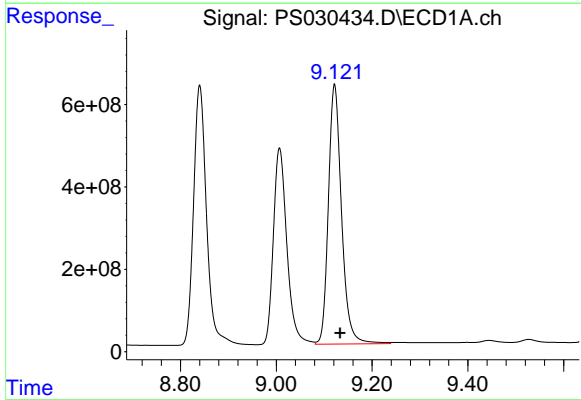
R.T.: 8.840 min
 Delta R.T.: -0.011 min
 Response: 11131112006
 Conc: 687.28 ng/ml

Instrument :
 ECD_S
 ClientSampleId :



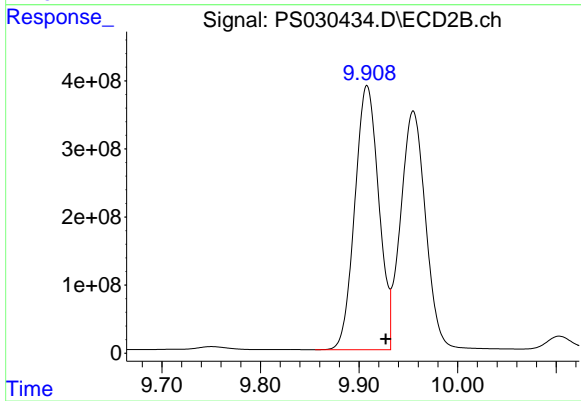
#11 2,4,5-TP (SILVEX)

R.T.: 9.505 min
 Delta R.T.: -0.018 min
 Response: 7112060940
 Conc: 722.01 ng/ml



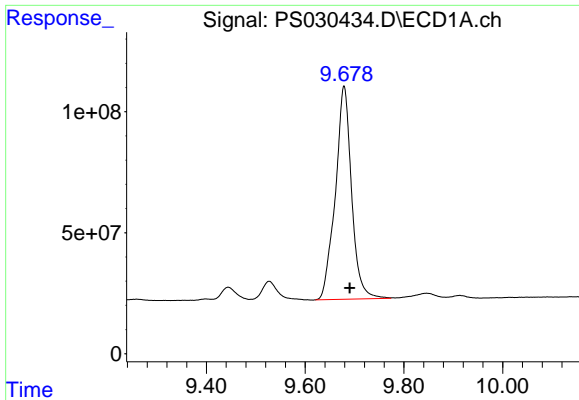
#12 2,4,5-T

R.T.: 9.122 min
 Delta R.T.: -0.011 min
 Response: 12000789974
 Conc: 726.65 ng/ml



#12 2,4,5-T

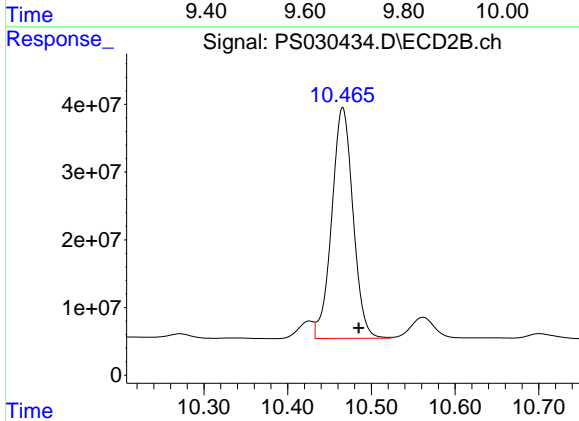
R.T.: 9.908 min
 Delta R.T.: -0.019 min
 Response: 6551020518
 Conc: 711.79 ng/ml



#13 2,4-DB

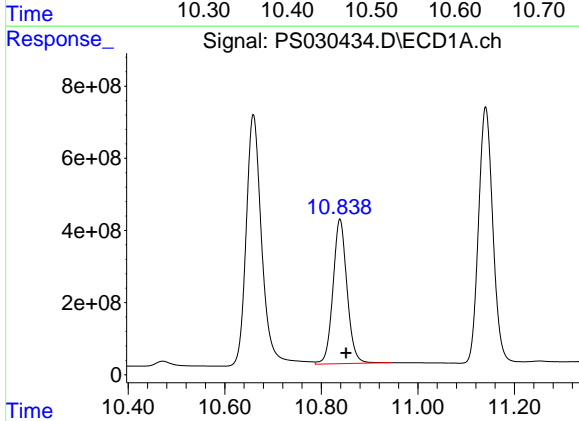
R.T.: 9.679 min
 Delta R.T.: -0.011 min
 Response: 2014209849
 Conc: 771.79 ng/ml

Instrument :
 ECD_S
 ClientSampleId :



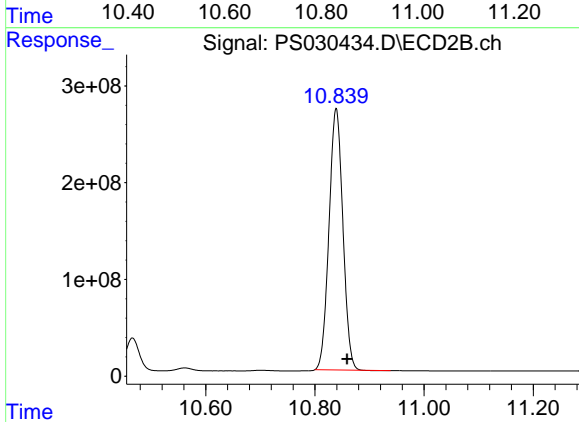
#13 2,4-DB

R.T.: 10.466 min
 Delta R.T.: -0.019 min
 Response: 602195890
 Conc: 606.82 ng/ml



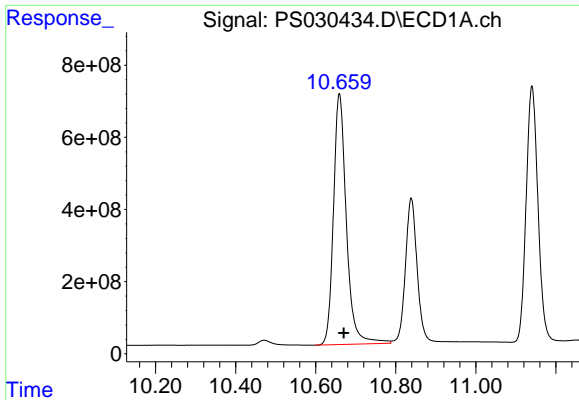
#14 DINOSEB

R.T.: 10.839 min
 Delta R.T.: -0.013 min
 Response: 8089911608
 Conc: 707.39 ng/ml



#14 DINOSEB

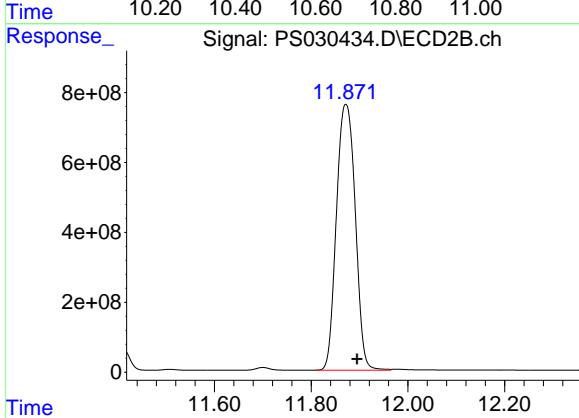
R.T.: 10.839 min
 Delta R.T.: -0.020 min
 Response: 4760735395
 Conc: 696.83 ng/ml



#15 Picloram

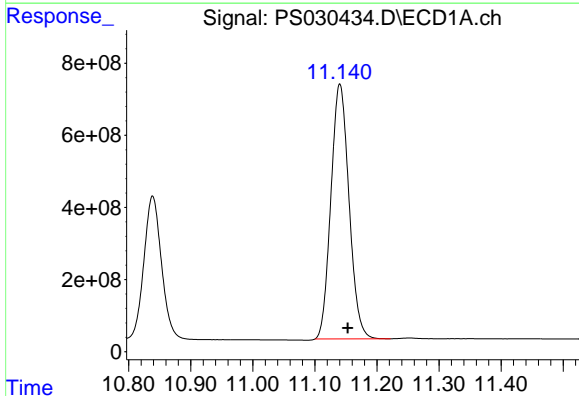
R.T.: 10.659 min
Delta R.T.: -0.011 min
Response: 15581609469
Conc: 728.56 ng/ml

Instrument :
ECD_S
ClientSampleId :



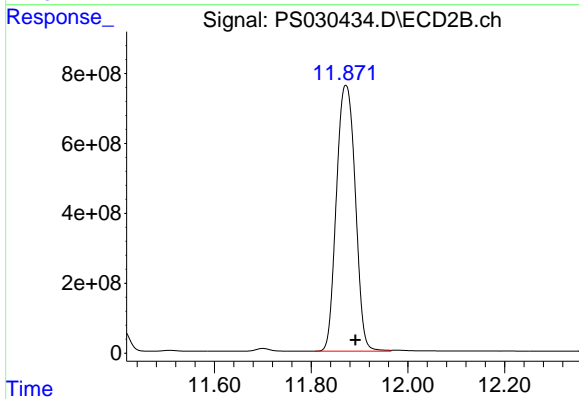
#15 Picloram

R.T.: 11.872 min
Delta R.T.: -0.023 min
Response: 20596060471
Conc: 1463.50 ng/ml



#16 DCPA

R.T.: 11.140 min
Delta R.T.: -0.013 min
Response: 14321504669
Conc: 719.26 ng/ml



#16 DCPA

R.T.: 11.872 min
Delta R.T.: -0.020 min
Response: 20596060471
Conc: 1524.45 ng/ml