

Data Path : Z:\pestpcbsrv\HPCHEM1\ECD\_S\Data\PS060120\  
 Data File : PS010600.D  
 Signal(s) : Signal #1: ECD1A.ch Signal #2: ECD2B.ch  
 Acq On : 02 Jun 2020 07:27  
 Operator : DD\AJ  
 Sample : L2792-07  
 Misc :  
 ALS Vial : 48 Sample Multiplier: 1

Integration File signal 1: autoint1.e  
 Integration File signal 2: autoint2.e  
 Quant Time: Jun 02 08:27:10 2020  
 Quant Method : Z:\pestpcbsrv\HPCHEM1\ECD\_S\Method\PS052920.M  
 Quant Title : 8080.M  
 QLast Update : Fri May 29 15:43:50 2020  
 Response via : Initial Calibration  
 Integrator: ChemStation

Volume Inj. : 2 µl  
 Signal #1 Phase : Rtx-CLPesticides Signal #2 Phase: Rtx-CLPesticides2  
 Signal #1 Info : 30M x 0.32mm x0.5 Signal #2 Info : 30M x 0.32mm x 0.25µm

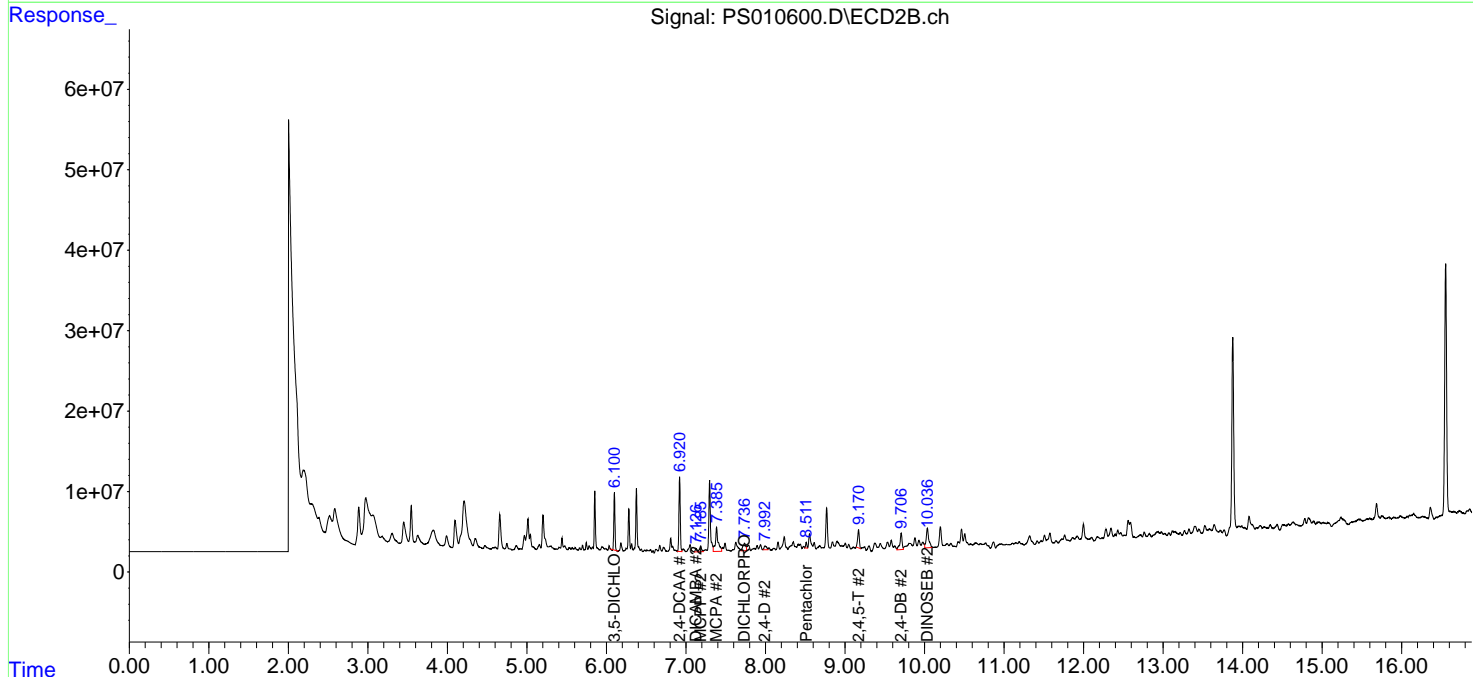
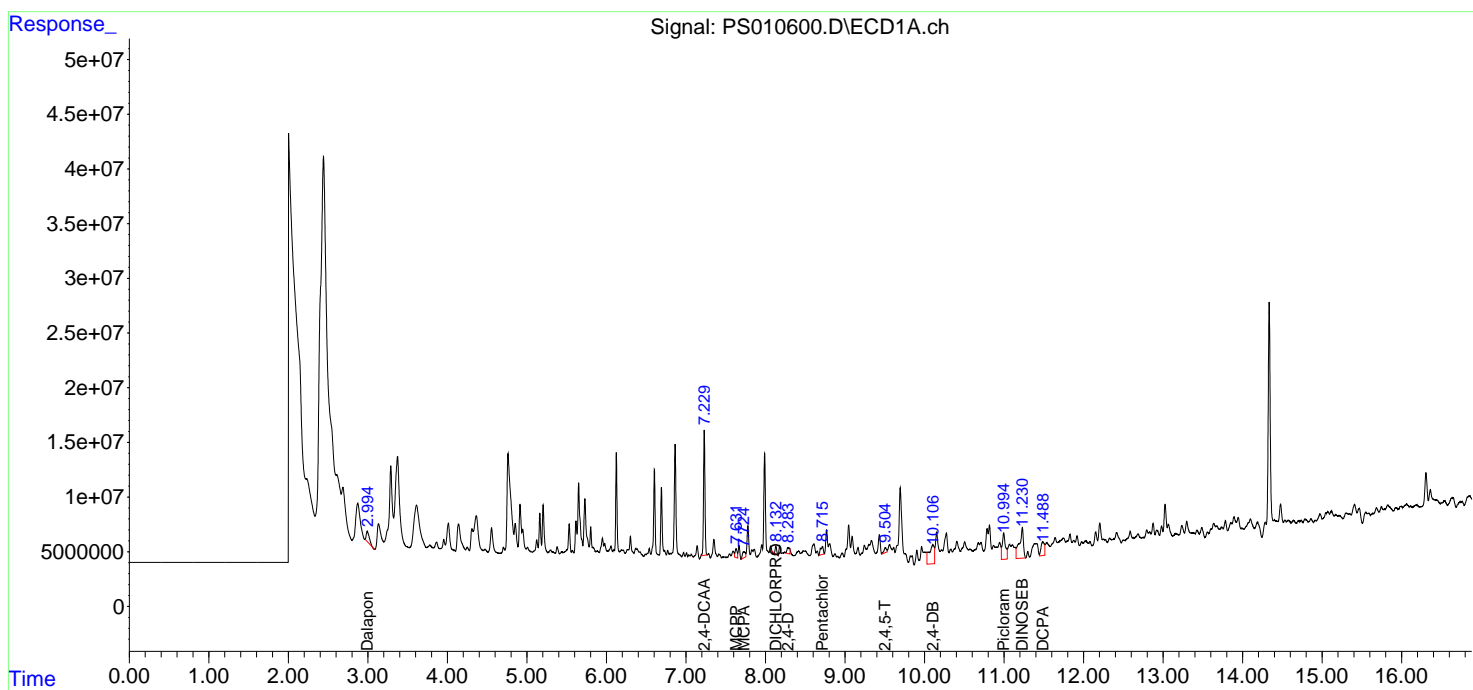
Compound	RT#1	RT#2	Resp#1	Resp#2	ng/ml	ng/ml
-----						
System Monitoring Compounds						
4) S 2,4-DCAA	7.230	6.920	144.7E6	106.2E6	182.957	194.780
Target Compounds						
1) T Dalapon	2.993	2.584	25744469	-17676633	26.185	N.D. #
2) T 3,5-DICHL...	0.000	6.100	0	69766663	N.D.	85.118
5) T DICAMBA	0.000	7.128	0	6065248	N.D.	2.695
6) T MCPP	7.630	7.185	14197761	12904430	5.747	6.925
7) T MCPA	7.727	7.385	13866994	69906519	3.967	25.722 #
8) T DICHLORPROP	8.131	7.737	7260885	24538094	9.580	42.554 #
9) T 2,4-D	8.282	7.993	12191424	10249521	15.466	13.517
10) T Pentachlo...	8.716	8.513	17681365	7651033	1.658	1.077 #
12) T 2,4,5-T	9.506	9.170	9763512	32792826	2.401	10.928 #
13) T 2,4-DB	10.105	9.707	76930838	39676794	139.134	97.673 #
14) T DINOSEB	11.230	10.036	97686131	54830756	30.233	25.486
15) T Picloram	10.996	0.000	67020956	0	13.128	N.D. #
16) T DCPA	11.489	0.000	36782590	0	6.865	N.D. #
-----						

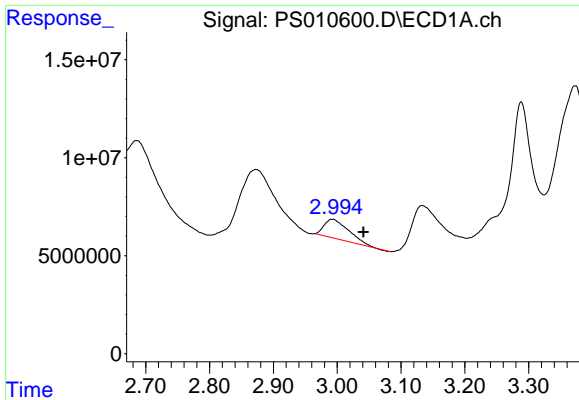
(f)=RT Delta > 1/2 Window (#)=Amounts differ by > 25% (m)=manual int.

Data Path : Z:\pestpcbsrv\HPCHEM1\ECD\_S\Data\PS060120\  
 Data File : PS010600.D  
 Signal(s) : Signal #1: ECD1A.ch Signal #2: ECD2B.ch  
 Acq On : 02 Jun 2020 07:27  
 Operator : DD\AJ  
 Sample : L2792-07  
 Misc :  
 ALS Vial : 48 Sample Multiplier: 1

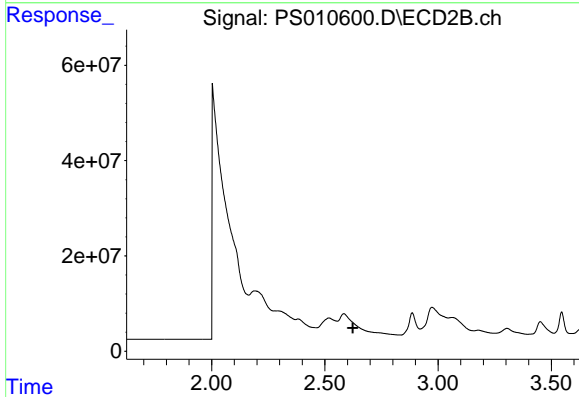
Integration File signal 1: autoint1.e  
 Integration File signal 2: autoint2.e  
 Quant Time: Jun 02 08:27:10 2020  
 Quant Method : Z:\pestpcbsrv\HPCHEM1\ECD\_S\Method\PS052920.M  
 Quant Title : 8080.M  
 QLast Update : Fri May 29 15:43:50 2020  
 Response via : Initial Calibration  
 Integrator: ChemStation

Volume Inj. : 2 µl  
 Signal #1 Phase : Rtx-CLPesticides Signal #2 Phase: Rtx-CLPesticides2  
 Signal #1 Info : 30M x 0.32mm x0.5 Signal #2 Info : 30M x 0.32mm x 0.25µm

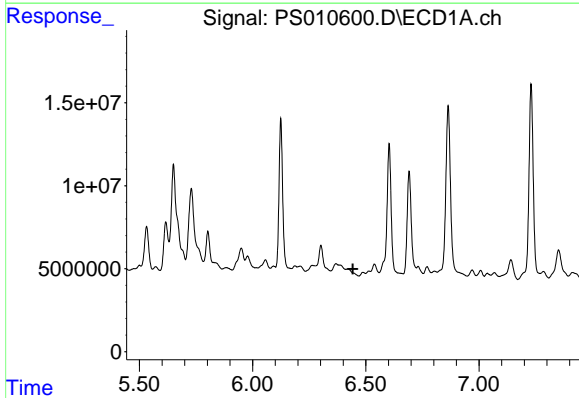




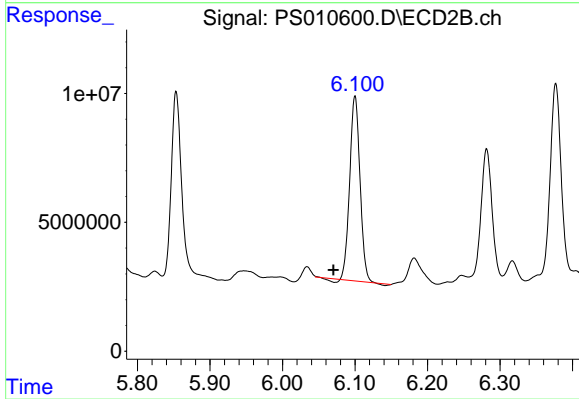
#1 Dalapon  
 R.T.: 2.993 min  
 Delta R.T.: -0.048 min  
 Response: 25744469  
 Conc: 26.18 ng/ml



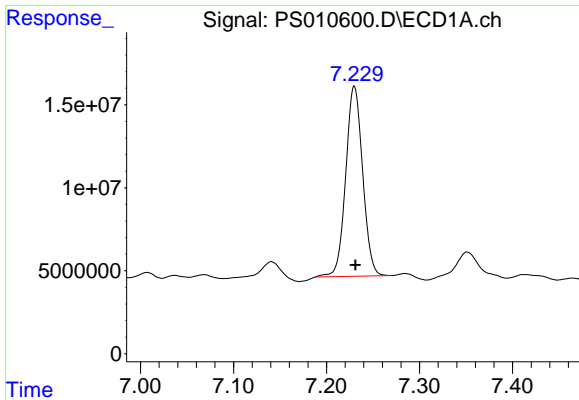
#1 Dalapon  
 R.T.: 2.584 min  
 Delta R.T.: -0.040 min  
 Response: -17676633  
 Conc: N.D.



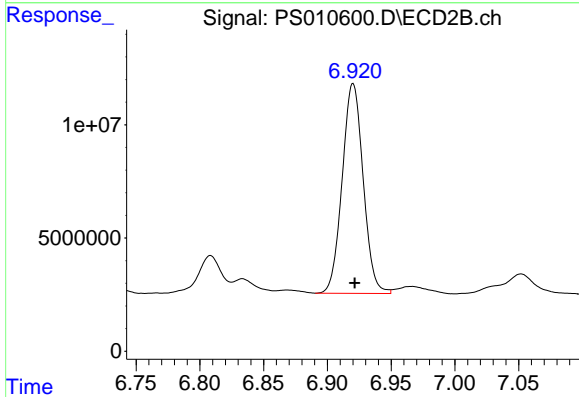
#2 3,5-DICHLOROBENZOIC ACID  
 R.T.: 0.000 min  
 Exp R.T. : 6.443 min  
 Response: 0  
 Conc: N.D.



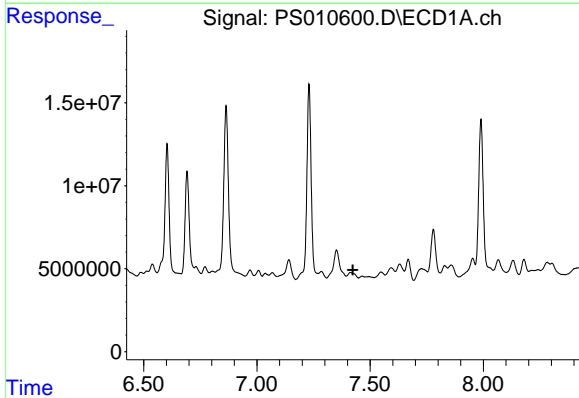
#2 3,5-DICHLOROBENZOIC ACID  
 R.T.: 6.100 min  
 Delta R.T.: 0.030 min  
 Response: 69766663  
 Conc: 85.12 ng/ml



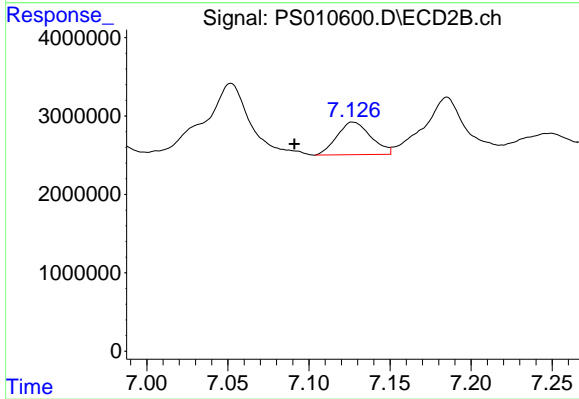
#4 2,4-DCAA  
 R.T.: 7.230 min  
 Delta R.T.: -0.001 min  
 Response: 144693819  
 Conc: 182.96 ng/ml



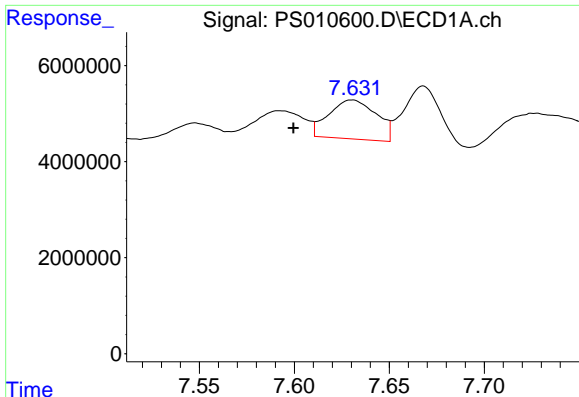
#4 2,4-DCAA  
 R.T.: 6.920 min  
 Delta R.T.: -0.001 min  
 Response: 106236287  
 Conc: 194.78 ng/ml



#5 DICAMBA  
 R.T.: 0.000 min  
 Exp R.T. : 7.423 min  
 Response: 0  
 Conc: N.D.

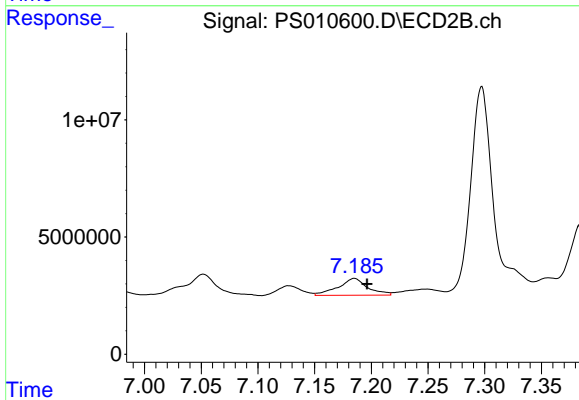


#5 DICAMBA  
 R.T.: 7.128 min  
 Delta R.T.: 0.036 min  
 Response: 6065248  
 Conc: 2.69 ng/ml



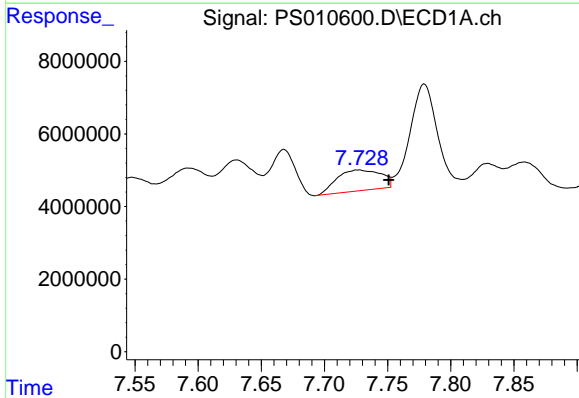
#6 MCPP

R.T.: 7.630 min  
Delta R.T.: 0.031 min  
Response: 14197761  
Conc: 5.75 ug/ml



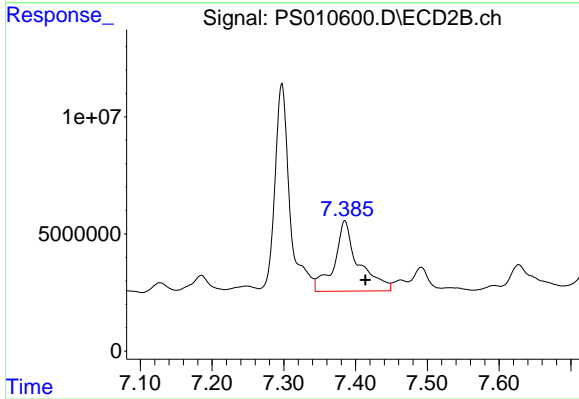
#6 MCPP

R.T.: 7.185 min  
Delta R.T.: -0.011 min  
Response: 12904430  
Conc: 6.92 ug/ml



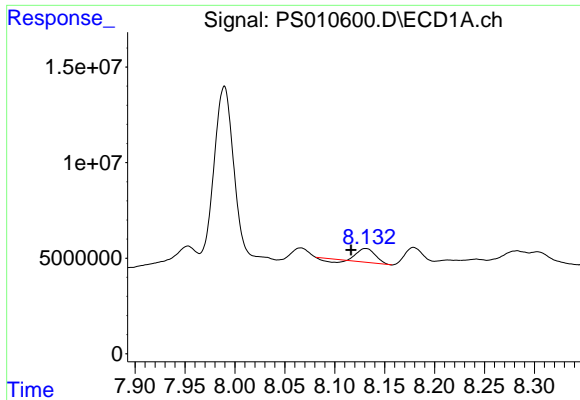
#7 MCPA

R.T.: 7.727 min  
Delta R.T.: -0.024 min  
Response: 13866994  
Conc: 3.97 ug/ml

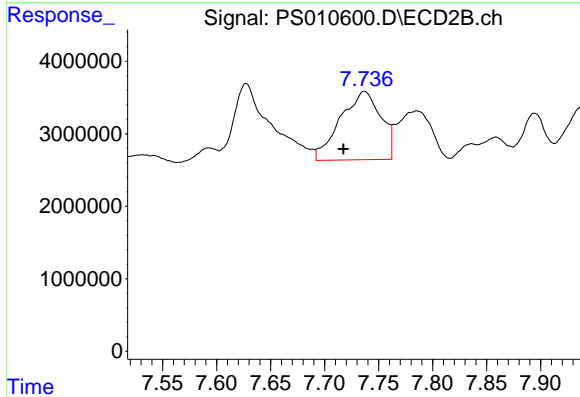


#7 MCPA

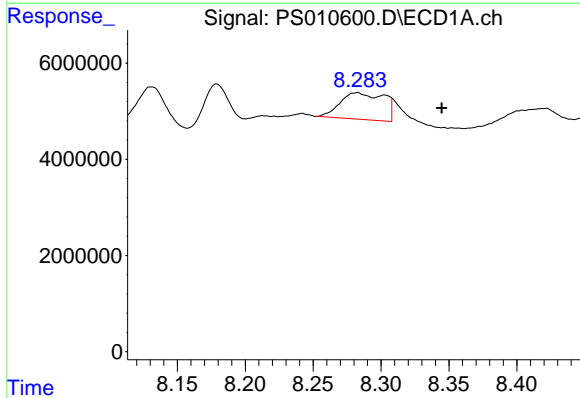
R.T.: 7.385 min  
Delta R.T.: -0.029 min  
Response: 69906519  
Conc: 25.72 ug/ml



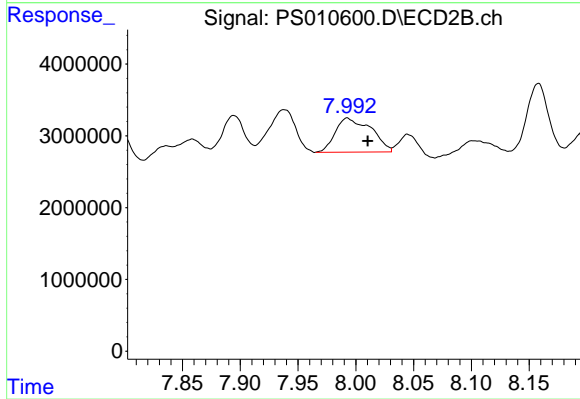
#8 DICHLORPROP  
 R.T.: 8.131 min  
 Delta R.T.: 0.015 min  
 Response: 7260885  
 Conc: 9.58 ng/ml



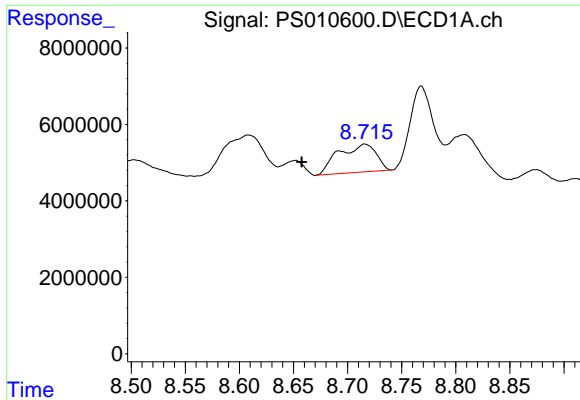
#8 DICHLORPROP  
 R.T.: 7.737 min  
 Delta R.T.: 0.020 min  
 Response: 24538094  
 Conc: 42.55 ng/ml



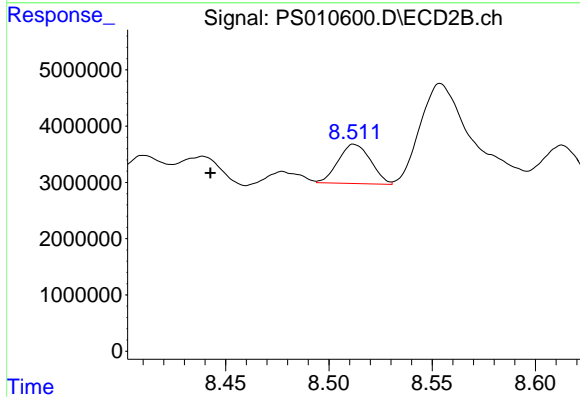
#9 2,4-D  
 R.T.: 8.282 min  
 Delta R.T.: -0.063 min  
 Response: 12191424  
 Conc: 15.47 ng/ml



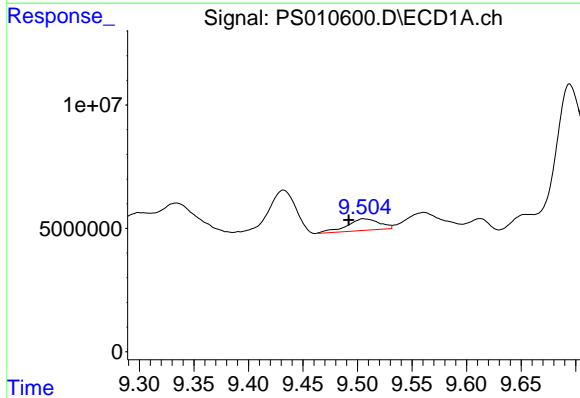
#9 2,4-D  
 R.T.: 7.993 min  
 Delta R.T.: -0.017 min  
 Response: 10249521  
 Conc: 13.52 ng/ml



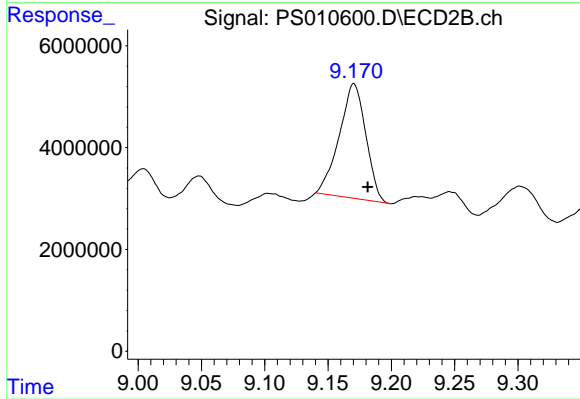
#10 Pentachlorophenol  
R.T.: 8.716 min  
Delta R.T.: 0.058 min  
Response: 17681365  
Conc: 1.66 ng/ml



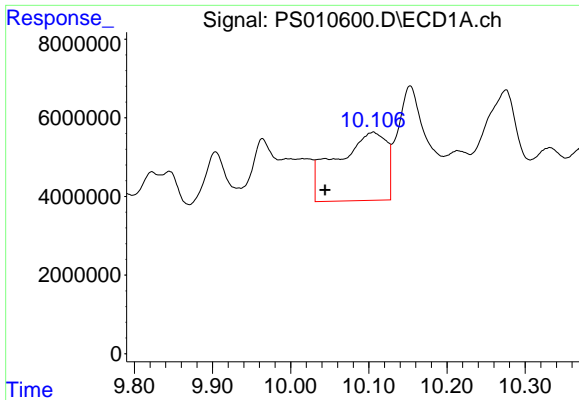
#10 Pentachlorophenol  
R.T.: 8.513 min  
Delta R.T.: 0.070 min  
Response: 7651033  
Conc: 1.08 ng/ml



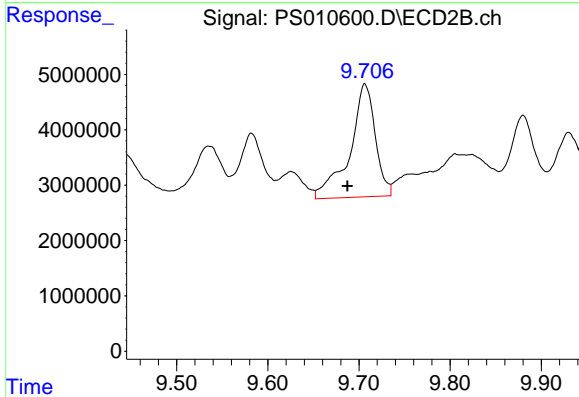
#12 2,4,5-T  
R.T.: 9.506 min  
Delta R.T.: 0.014 min  
Response: 9763512  
Conc: 2.40 ng/ml



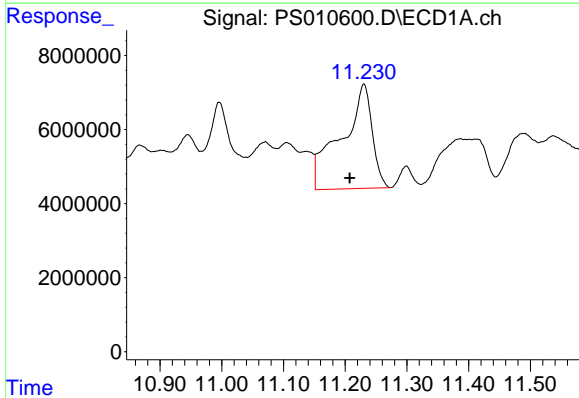
#12 2,4,5-T  
R.T.: 9.170 min  
Delta R.T.: -0.011 min  
Response: 32792826  
Conc: 10.93 ng/ml



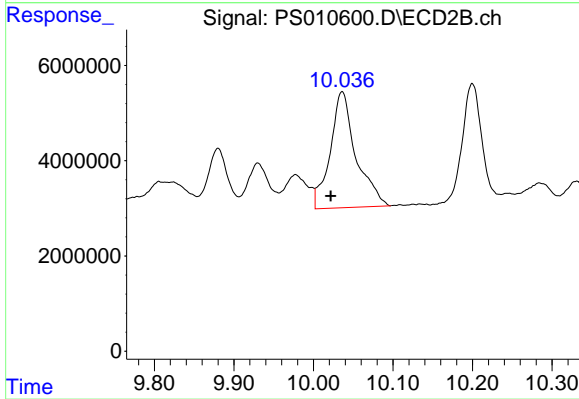
#13 2,4-DB  
R.T.: 10.105 min  
Delta R.T.: 0.061 min  
Response: 76930838  
Conc: 139.13 ng/ml



#13 2,4-DB  
R.T.: 9.707 min  
Delta R.T.: 0.019 min  
Response: 39676794  
Conc: 97.67 ng/ml

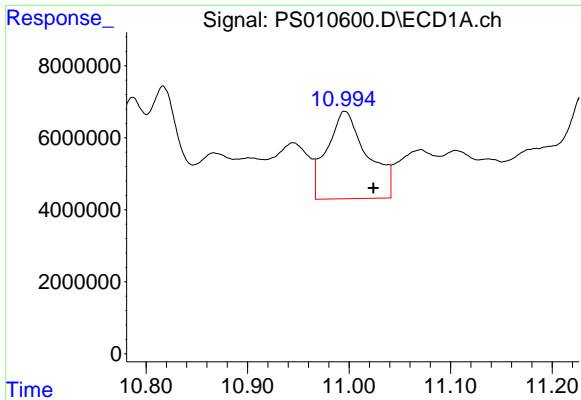


#14 DINOSEB  
R.T.: 11.230 min  
Delta R.T.: 0.023 min  
Response: 97686131  
Conc: 30.23 ng/ml



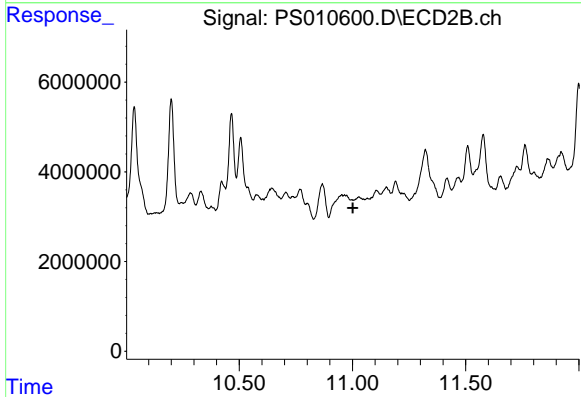
#14 DINOSEB  
R.T.: 10.036 min  
Delta R.T.: 0.014 min  
Response: 54830756  
Conc: 25.49 ng/ml





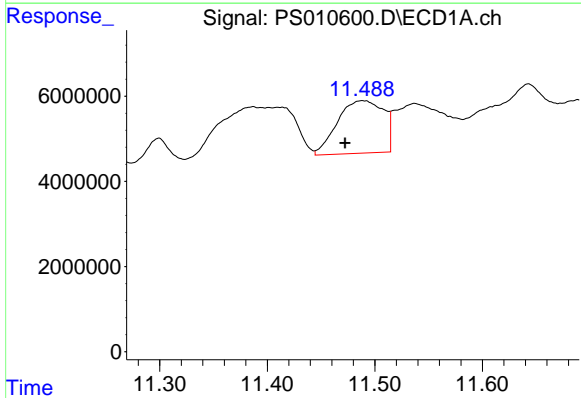
#15 Picloram

R.T.: 10.996 min  
 Delta R.T.: -0.028 min  
 Response: 67020956  
 Conc: 13.13 ng/ml



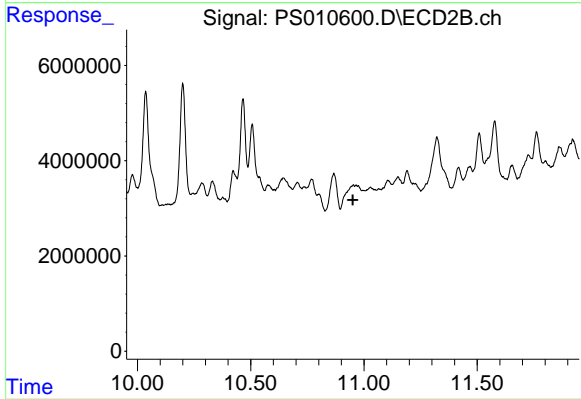
#15 Picloram

R.T.: 0.000 min  
 Exp R.T. : 11.002 min  
 Response: 0  
 Conc: N.D.



#16 DCPA

R.T.: 11.489 min  
 Delta R.T.: 0.016 min  
 Response: 36782590  
 Conc: 6.87 ng/ml



#16 DCPA

R.T.: 0.000 min  
 Exp R.T. : 10.951 min  
 Response: 0  
 Conc: N.D.