

Data Path : Z:\pestpcbsrv\HPCHEM1\ECD_S\Data\PS060120\
 Data File : PS010605.D
 Signal(s) : Signal #1: ECD1A.ch Signal #2: ECD2B.ch
 Acq On : 02 Jun 2020 09:22
 Operator : DD\AJ
 Sample : L2792-12
 Misc :
 ALS Vial : 53 Sample Multiplier: 1

Integration File signal 1: autoint1.e
 Integration File signal 2: autoint2.e
 Quant Time: Jun 02 11:15:44 2020
 Quant Method : Z:\pestpcbsrv\HPCHEM1\ECD_S\Method\PS052920.M
 Quant Title : 8080.M
 QLast Update : Fri May 29 15:43:50 2020
 Response via : Initial Calibration
 Integrator: ChemStation

Volume Inj. : 2 µl
 Signal #1 Phase : Rtx-CLPesticides Signal #2 Phase: Rtx-CLPesticides2
 Signal #1 Info : 30M x 0.32mm x0.5 Signal #2 Info : 30M x 0.32mm x 0.25µm

	Compound	RT#1	RT#2	Resp#1	Resp#2	ng/ml	ng/ml

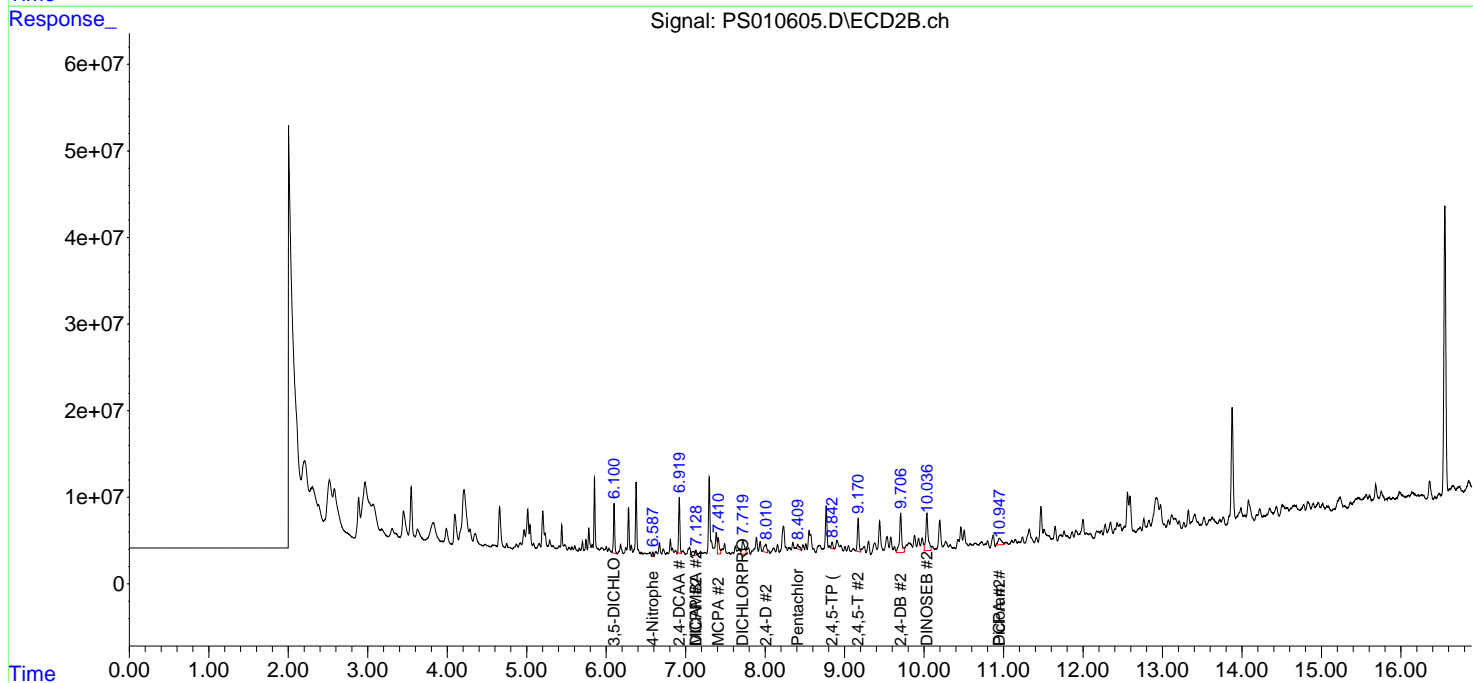
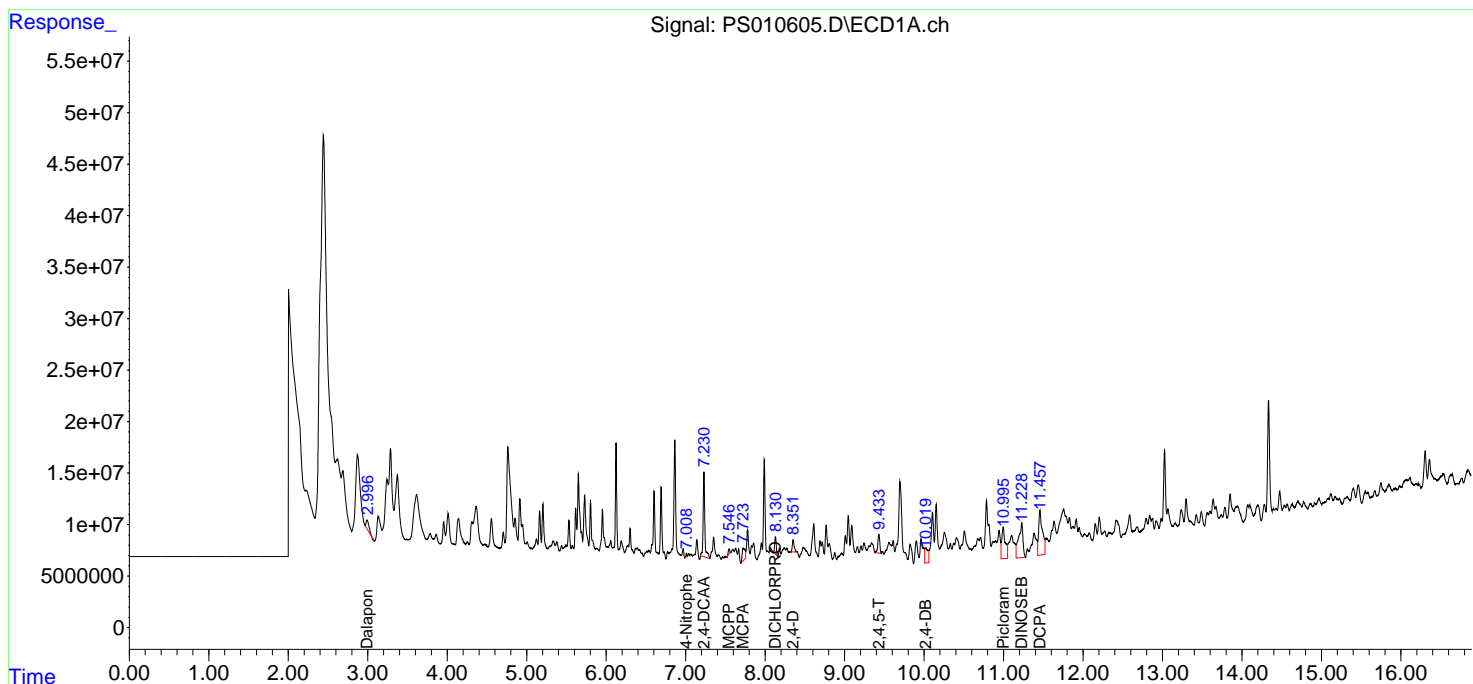
System Monitoring Compounds							
4) S	2,4-DCAA	7.230	6.920	120.0E6	70932631	151.749	130.052
Target Compounds							
2) T	3,5-DICHL...	6.391	6.100	-502609	61652887	N.D.	75.219
3) T	4-Nitroph...	7.009	6.587	2601395	4388366	7.017	13.247 #
5) T	DICAMBA	0.000	7.128	0	8500623	N.D.	3.777
6) T	MCPD	7.547	7.128	6966720	8500623	2.820	4.562 #
7) T	MCPA	7.724	7.410	29293048	28191231	8.379	10.373
8) T	DICHLORPROP	8.130	7.719	22011426	37008027	29.042	64.180 #
9) T	2,4-D	8.352	8.011	19260820	21466860	24.434	28.311
10) T	Pentachlo...	8.692	8.410	-8020310	9854902	N.D.	1.387
11) T	2,4,5-TP ...	9.206	8.843	-2473268	9900444	N.D.	3.297
12) T	2,4,5-T	9.432	9.171	31469459	52889314	7.738	17.624 #
13) T	2,4-DB	10.020	9.706	42149822	87192593	76.230	214.642 #
14) T	DINOSEB	11.230	10.036	126.7E6	87979147	39.211	40.893
15) T	Picloram	10.996	10.948	95577755	23891834	18.722	5.791 #
16) T	DCPA	11.458	10.948	143.4E6	23891834	26.760	6.443 #

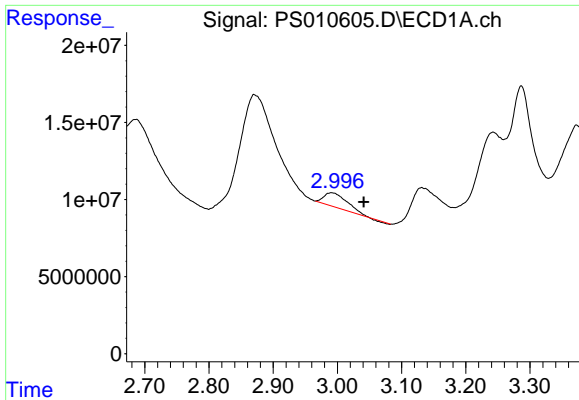
(f)=RT Delta > 1/2 Window (#)=Amounts differ by > 25% (m)=manual int.

Data Path : Z:\pestpcbsrv\HPCHEM1\ECD_S\Data\PS060120\
 Data File : PS010605.D
 Signal(s) : Signal #1: ECD1A.ch Signal #2: ECD2B.ch
 Acq On : 02 Jun 2020 09:22
 Operator : DD\AJ
 Sample : L2792-12
 Misc :
 ALS Vial : 53 Sample Multiplier: 1

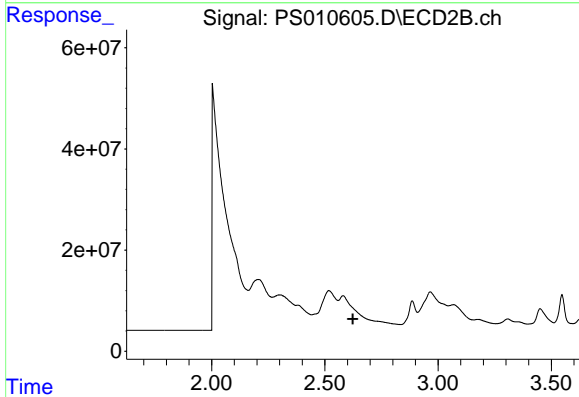
Integration File signal 1: autoint1.e
 Integration File signal 2: autoint2.e
 Quant Time: Jun 02 11:15:44 2020
 Quant Method : Z:\pestpcbsrv\HPCHEM1\ECD_S\Method\PS052920.M
 Quant Title : 8080.M
 QLast Update : Fri May 29 15:43:50 2020
 Response via : Initial Calibration
 Integrator: ChemStation

Volume Inj. : 2 µl
 Signal #1 Phase : Rtx-CLPesticides Signal #2 Phase: Rtx-CLPesticides2
 Signal #1 Info : 30M x 0.32mm x0.5 Signal #2 Info : 30M x 0.32mm x 0.25µm

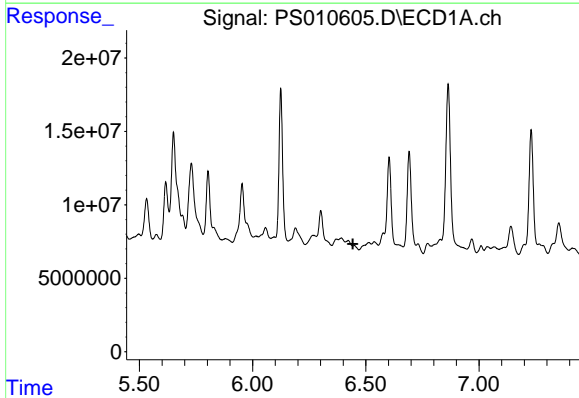




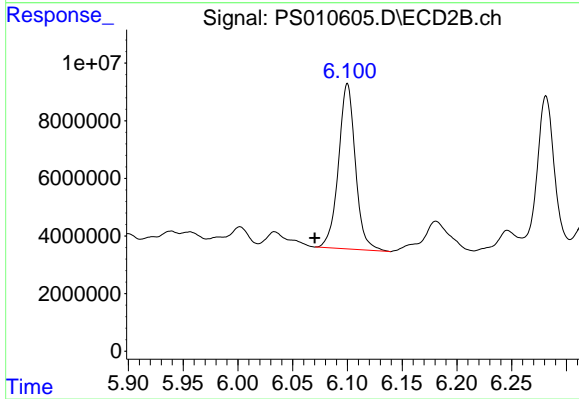
#1 Dalapon
 R.T.: 2.991 min
 Delta R.T.: -0.050 min
 Response: 22305557
 Conc: 22.69 ng/ml



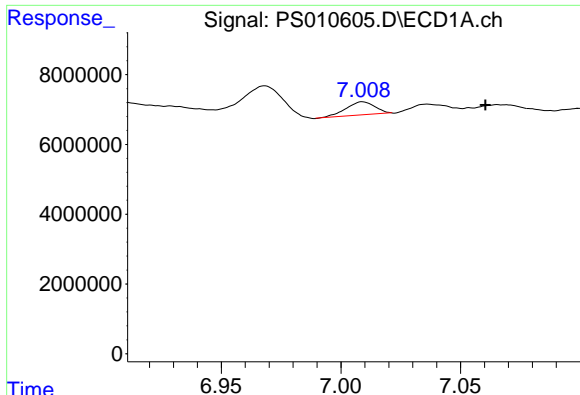
#1 Dalapon
 R.T.: 2.580 min
 Delta R.T.: -0.043 min
 Response: -146113278
 Conc: N.D.



#2 3,5-DICHLOROBENZOIC ACID
 R.T.: 6.391 min
 Delta R.T.: -0.052 min
 Response: -502609
 Conc: N.D.

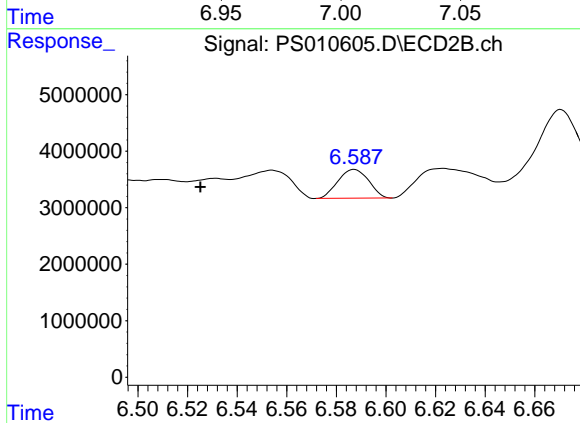


#2 3,5-DICHLOROBENZOIC ACID
 R.T.: 6.100 min
 Delta R.T.: 0.030 min
 Response: 61652887
 Conc: 75.22 ng/ml



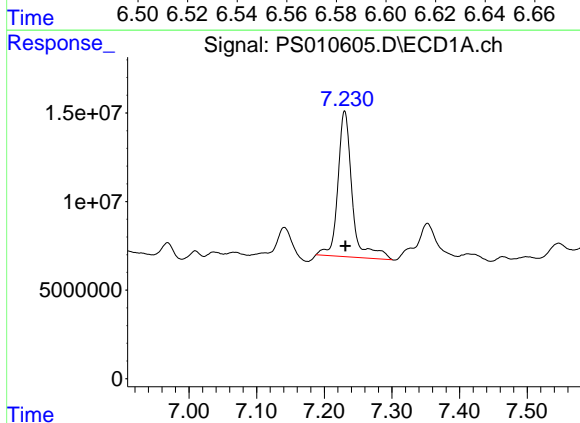
#3 4-Nitrophenol

R.T.: 7.009 min
Delta R.T.: -0.051 min
Response: 2601395
Conc: 7.02 ng/ml



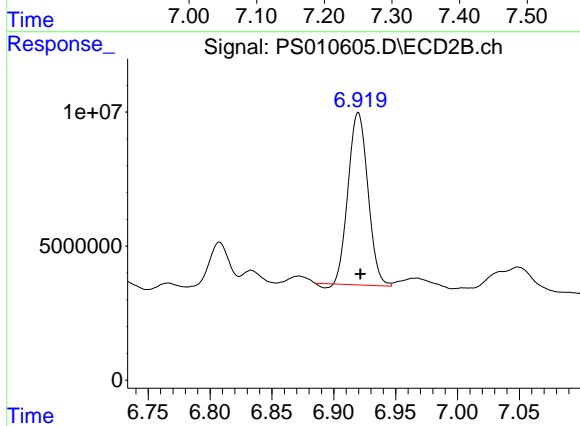
#3 4-Nitrophenol

R.T.: 6.587 min
Delta R.T.: 0.062 min
Response: 4388366
Conc: 13.25 ng/ml



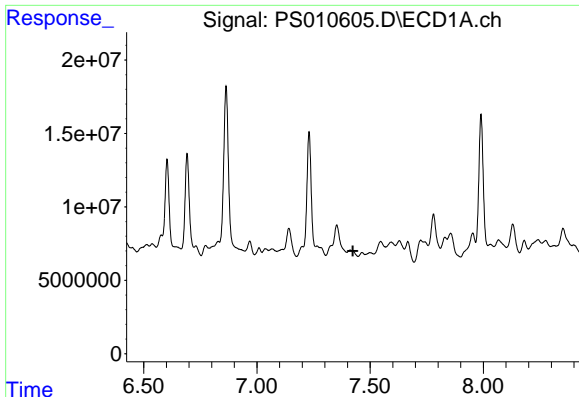
#4 2,4-DCAA

R.T.: 7.230 min
Delta R.T.: 0.000 min
Response: 120012344
Conc: 151.75 ng/ml



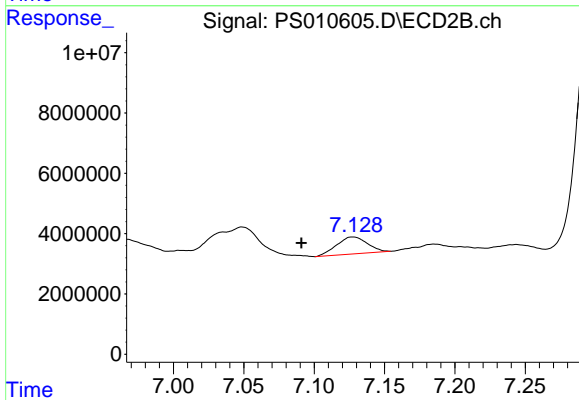
#4 2,4-DCAA

R.T.: 6.920 min
Delta R.T.: -0.002 min
Response: 70932631
Conc: 130.05 ng/ml



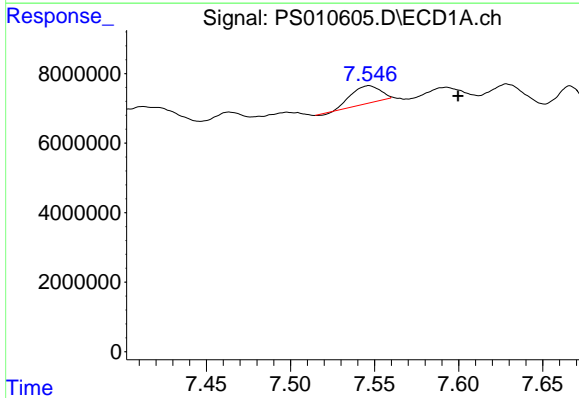
#5 DICAMBA

R.T.: 0.000 min
 Exp R.T. : 7.423 min
 Response: 0
 Conc: N.D.



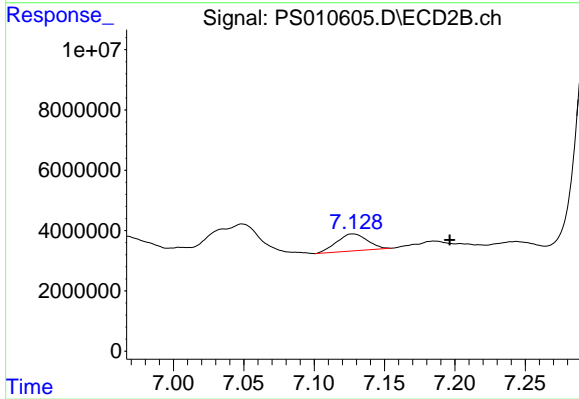
#5 DICAMBA

R.T.: 7.128 min
 Delta R.T.: 0.037 min
 Response: 8500623
 Conc: 3.78 ng/ml



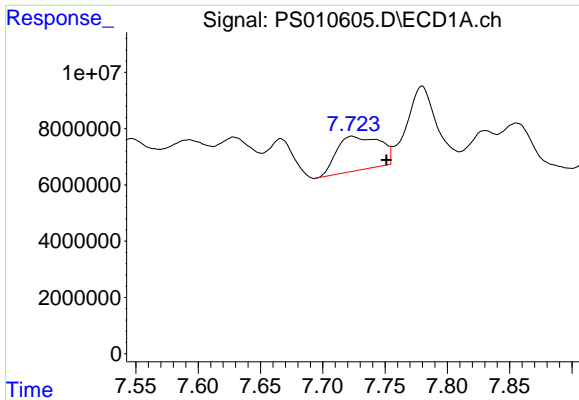
#6 MCPP

R.T.: 7.547 min
 Delta R.T.: -0.053 min
 Response: 6966720
 Conc: 2.82 ug/ml



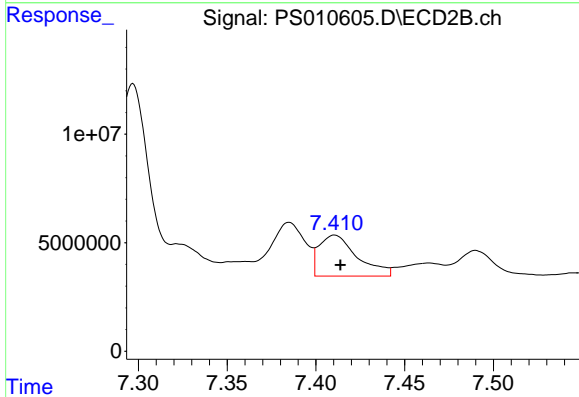
#6 MCPP

R.T.: 7.128 min
 Delta R.T.: -0.069 min
 Response: 8500623
 Conc: 4.56 ug/ml



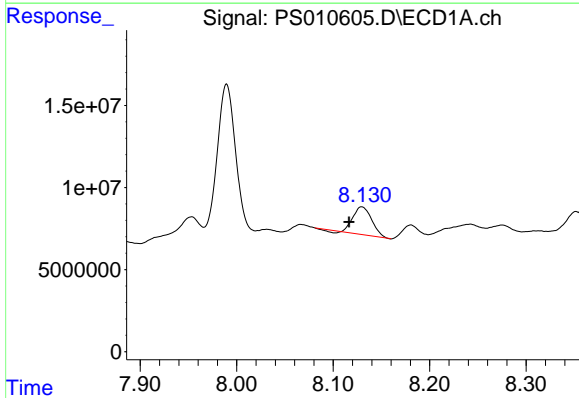
#7 MCPA

R.T.: 7.724 min
 Delta R.T.: -0.027 min
 Response: 29293048
 Conc: 8.38 ug/ml



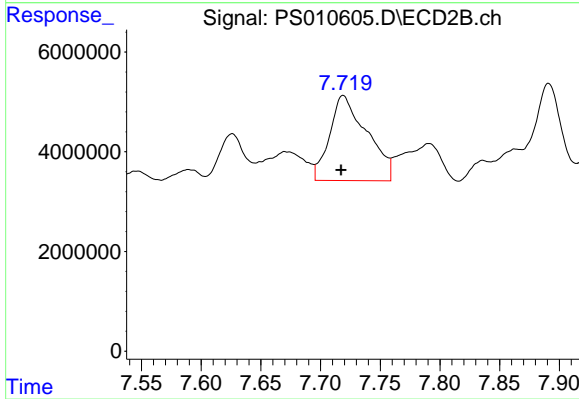
#7 MCPA

R.T.: 7.410 min
 Delta R.T.: -0.003 min
 Response: 28191231
 Conc: 10.37 ug/ml



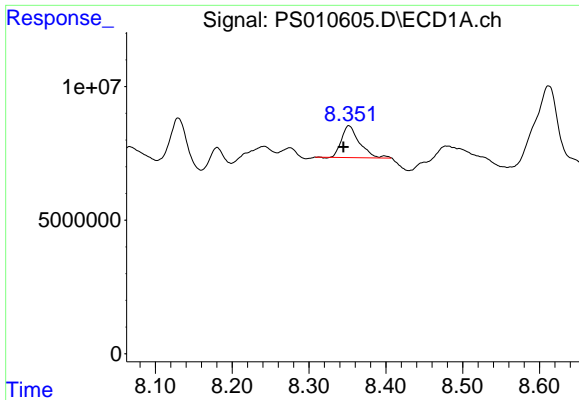
#8 DICHLORPROP

R.T.: 8.130 min
 Delta R.T.: 0.013 min
 Response: 22011426
 Conc: 29.04 ng/ml

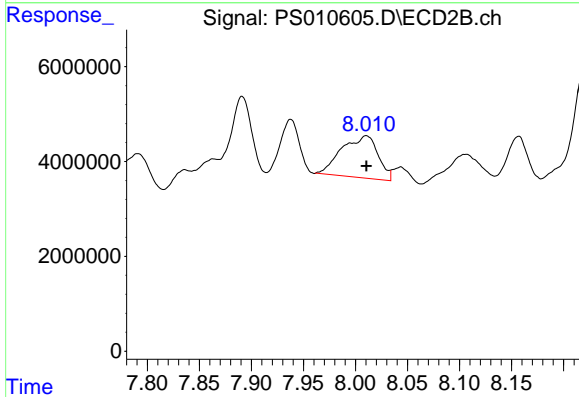


#8 DICHLORPROP

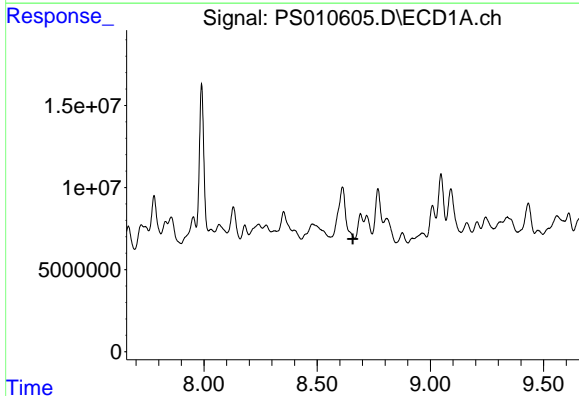
R.T.: 7.719 min
 Delta R.T.: 0.002 min
 Response: 37008027
 Conc: 64.18 ng/ml



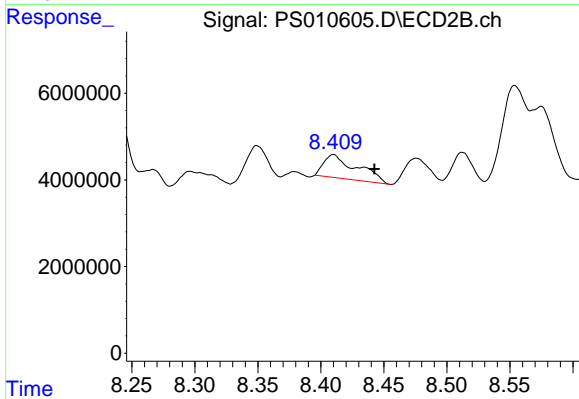
#9 2,4-D
R.T.: 8.352 min
Delta R.T.: 0.007 min
Response: 19260820
Conc: 24.43 ng/ml



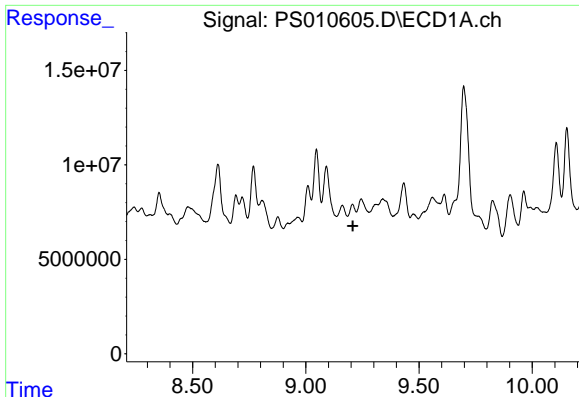
#9 2,4-D
R.T.: 8.011 min
Delta R.T.: 0.000 min
Response: 21466860
Conc: 28.31 ng/ml



#10 Pentachlorophenol
R.T.: 8.692 min
Delta R.T.: 0.034 min
Response: -8020310
Conc: N.D.

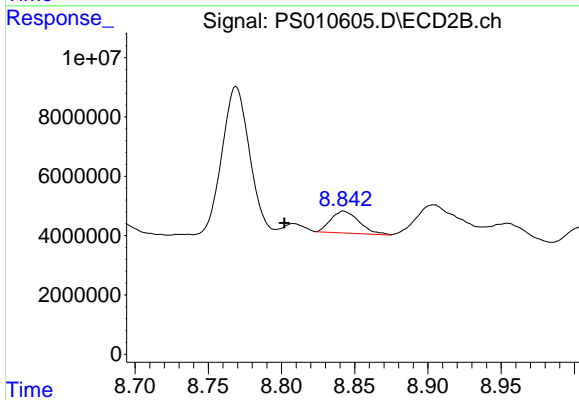


#10 Pentachlorophenol
R.T.: 8.410 min
Delta R.T.: -0.033 min
Response: 9854902
Conc: 1.39 ng/ml



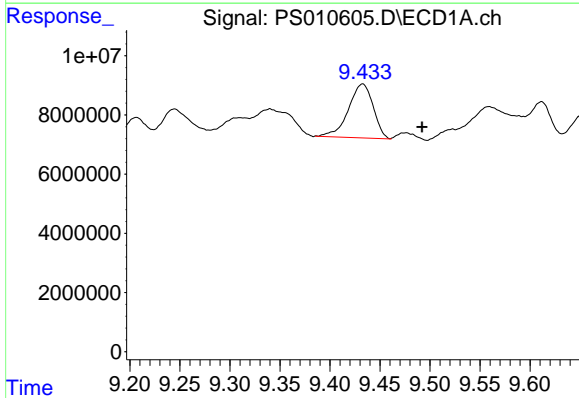
#11 2,4,5-TP (SILVEX)

R.T.: 9.206 min
 Delta R.T.: -0.001 min
 Response: -2473268
 Conc: N.D.



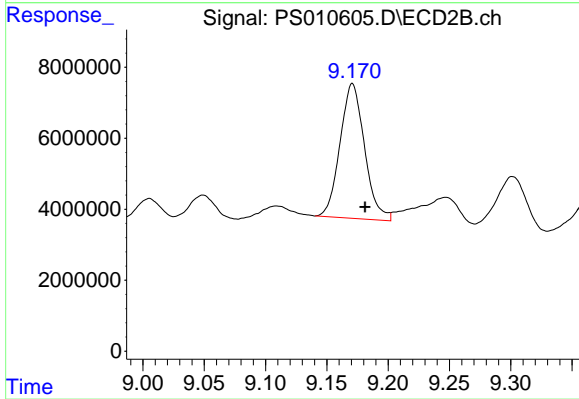
#11 2,4,5-TP (SILVEX)

R.T.: 8.843 min
 Delta R.T.: 0.041 min
 Response: 9900444
 Conc: 3.30 ng/ml



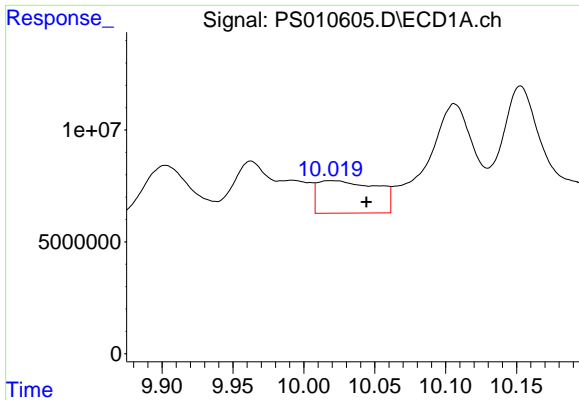
#12 2,4,5-T

R.T.: 9.432 min
 Delta R.T.: -0.060 min
 Response: 31469459
 Conc: 7.74 ng/ml



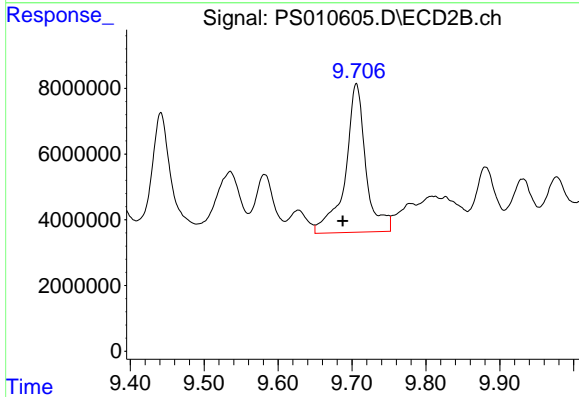
#12 2,4,5-T

R.T.: 9.171 min
 Delta R.T.: -0.010 min
 Response: 52889314
 Conc: 17.62 ng/ml



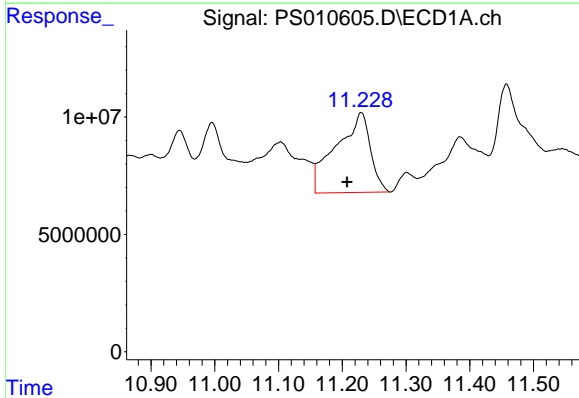
#13 2,4-DB

R.T.: 10.020 min
 Delta R.T.: -0.024 min
 Response: 42149822
 Conc: 76.23 ng/ml



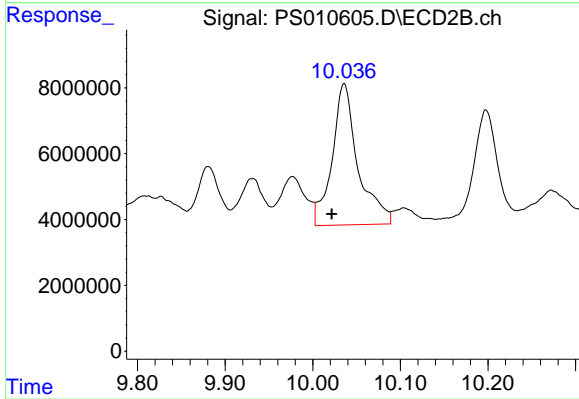
#13 2,4-DB

R.T.: 9.706 min
 Delta R.T.: 0.019 min
 Response: 87192593
 Conc: 214.64 ng/ml



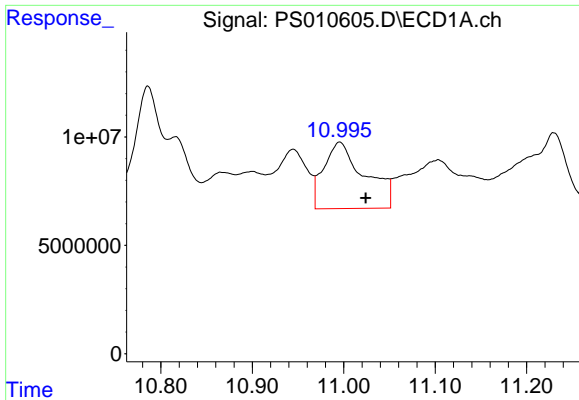
#14 DINOSEB

R.T.: 11.230 min
 Delta R.T.: 0.022 min
 Response: 126694127
 Conc: 39.21 ng/ml



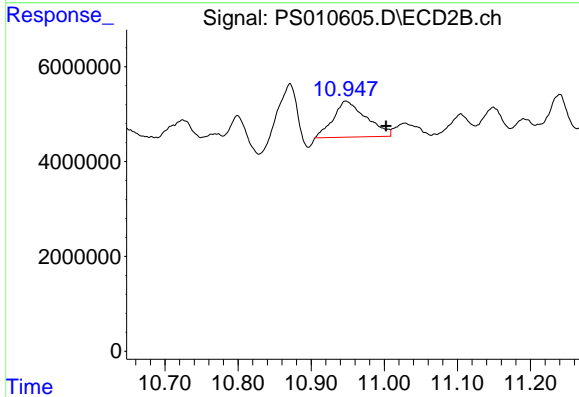
#14 DINOSEB

R.T.: 10.036 min
 Delta R.T.: 0.014 min
 Response: 87979147
 Conc: 40.89 ng/ml



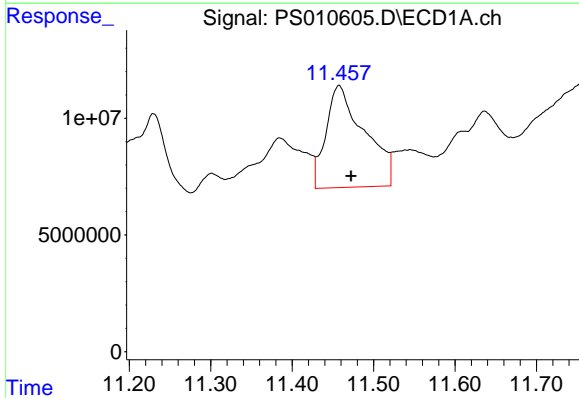
#15 Picloram

R.T.: 10.996 min
 Delta R.T.: -0.028 min
 Response: 95577755
 Conc: 18.72 ng/ml



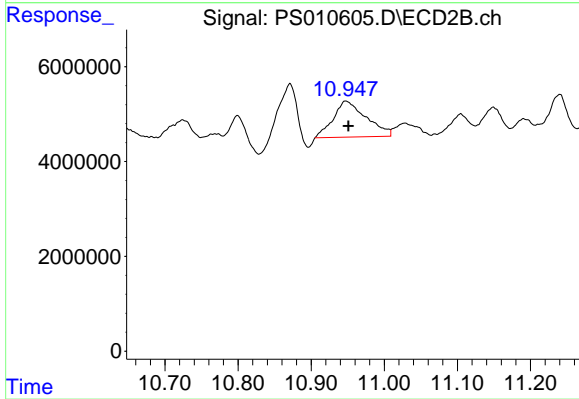
#15 Picloram

R.T.: 10.948 min
 Delta R.T.: -0.054 min
 Response: 23891834
 Conc: 5.79 ng/ml



#16 DCPA

R.T.: 11.458 min
 Delta R.T.: -0.015 min
 Response: 143378373
 Conc: 26.76 ng/ml



#16 DCPA

R.T.: 10.948 min
 Delta R.T.: -0.003 min
 Response: 23891834
 Conc: 6.44 ng/ml