

Data Path : Z:\pestpcbsrv\HPCHEM1\ECD_S\Data\PS060120\
 Data File : PS010607.D
 Signal(s) : Signal #1: ECD1A.ch Signal #2: ECD2B.ch
 Acq On : 02 Jun 2020 10:08
 Operator : DD\AJ
 Sample : HSTDCCC750
 Misc :
 ALS Vial : 3 Sample Multiplier: 1

Integration File signal 1: autoint1.e
 Integration File signal 2: autoint2.e
 Quant Time: Jun 02 11:16:11 2020
 Quant Method : Z:\pestpcbsrv\HPCHEM1\ECD_S\Method\PS052920.M
 Quant Title : 8080.M
 QLast Update : Fri May 29 15:43:50 2020
 Response via : Initial Calibration
 Integrator: ChemStation

Volume Inj. : 2 µl
 Signal #1 Phase : Rtx-CLPesticides Signal #2 Phase: Rtx-CLPesticides2
 Signal #1 Info : 30M x 0.32mm x0.5 Signal #2 Info : 30M x 0.32mm x 0.25µm

	Compound	RT#1	RT#2	Resp#1	Resp#2	ng/ml	ng/ml

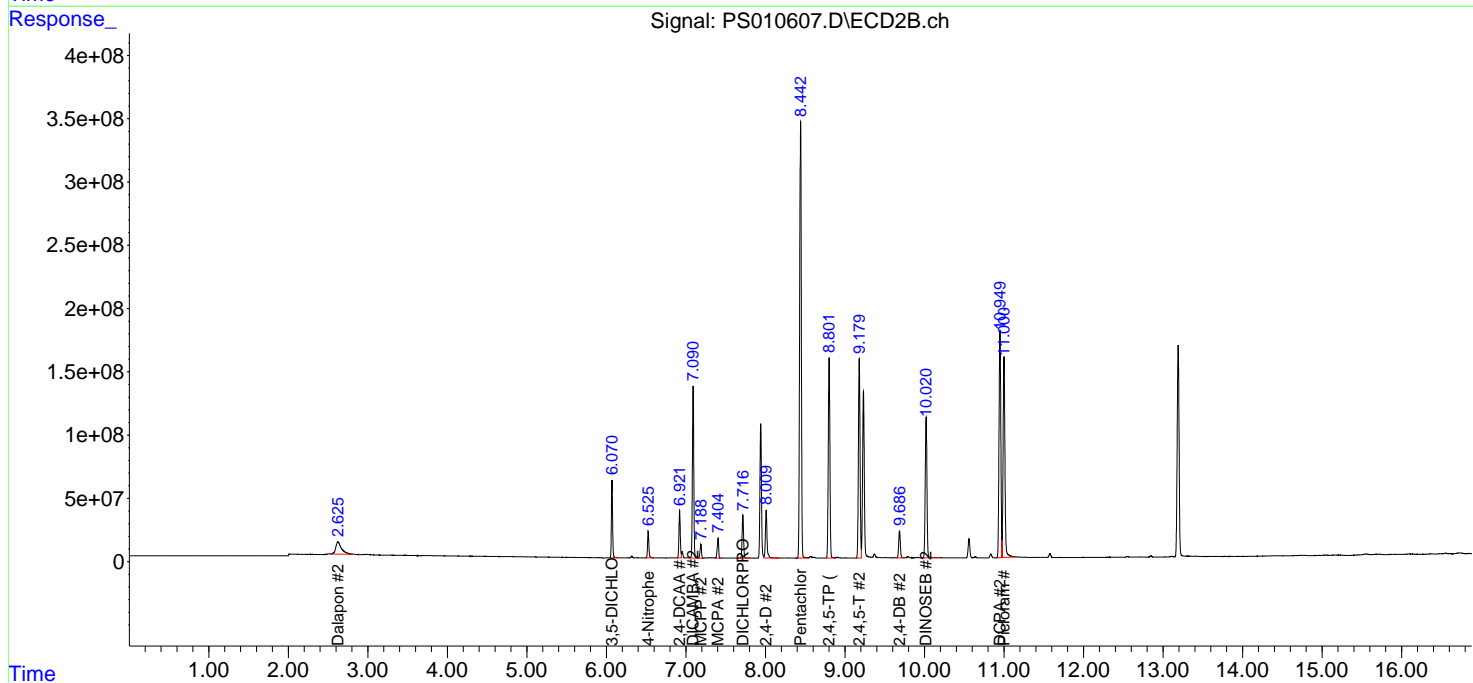
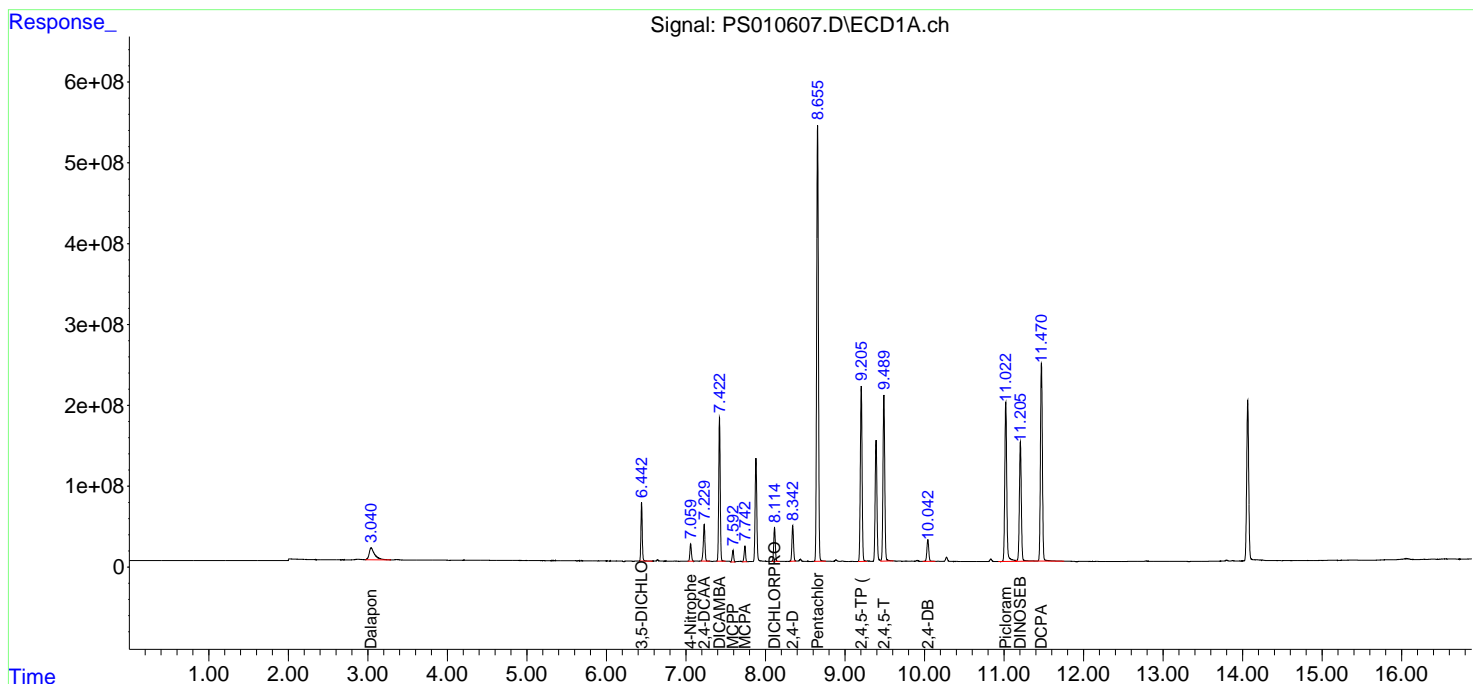
System Monitoring Compounds							
4) S	2,4-DCAA	7.230	6.921	651.8E6	435.4E6	824.110	798.206
Target Compounds							
1) T	Dalapon	3.040	2.624	711.1E6	499.3E6	723.301	681.960
2) T	3,5-DICHL...	6.442	6.070	843.2E6	615.2E6	771.298	750.607
3) T	4-Nitroph...	7.059	6.525	289.9E6	244.6E6	782.104	738.506
5) T	DICAMBA	7.422	7.090	2338.2E6	1643.2E6	743.580	730.036
6) T	MCP P	7.592	7.188	184.8E6	138.0E6	74.820	74.076
7) T	MCPA	7.742	7.404	246.6E6	197.1E6	70.545	72.524
8) T	DICHLORPROP	8.114	7.716	574.9E6	426.3E6	758.521	739.284
9) T	2,4-D	8.343	8.009	614.8E6	538.8E6	779.967	710.539
10) T	Pentachlo...	8.655	8.442	8342.5E6	5156.5E6	782.153	725.808
11) T	2,4,5-TP ...	9.205	8.801	3322.3E6	2246.8E6	776.812	748.109
12) T	2,4,5-T	9.489	9.180	3218.2E6	2267.3E6	791.303	755.547
13) T	2,4-DB	10.042	9.686	438.7E6	304.9E6	793.400	750.658
14) T	DINOSEB	11.206	10.021	2506.4E6	1672.9E6	775.727	777.588
15) T	Picloram	11.022	11.000	3433.4E6	2578.6E6	672.530	624.978
16) T	DCPA	11.470	10.949	4185.8E6	2834.7E6	781.226	764.444

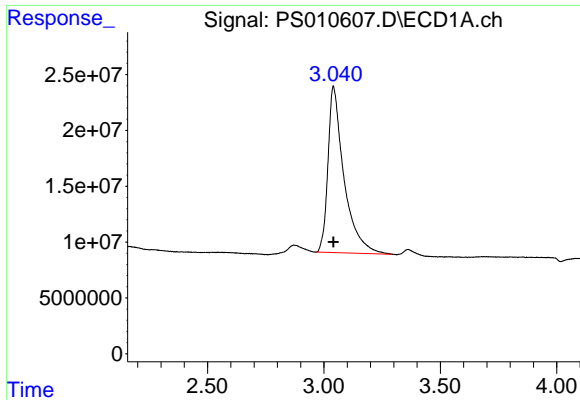
(f)=RT Delta > 1/2 Window (#)=Amounts differ by > 25% (m)=manual int.

Data Path : Z:\pestpcbsrv\HPCHEM1\ECD_S\Data\PS060120\
 Data File : PS010607.D
 Signal(s) : Signal #1: ECD1A.ch Signal #2: ECD2B.ch
 Acq On : 02 Jun 2020 10:08
 Operator : DD\AJ
 Sample : HSTDCCC750
 Misc :
 ALS Vial : 3 Sample Multiplier: 1

Integration File signal 1: autoint1.e
 Integration File signal 2: autoint2.e
 Quant Time: Jun 02 11:16:11 2020
 Quant Method : Z:\pestpcbsrv\HPCHEM1\ECD_S\Method\PS052920.M
 Quant Title : 8080.M
 QLast Update : Fri May 29 15:43:50 2020
 Response via : Initial Calibration
 Integrator: ChemStation

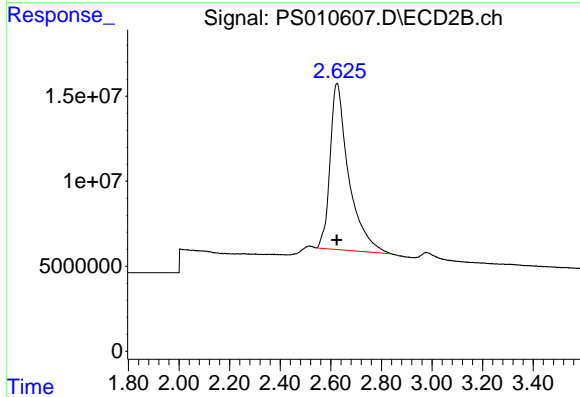
Volume Inj. : 2 µl
 Signal #1 Phase : Rtx-CLPesticides Signal #2 Phase: Rtx-CLPesticides2
 Signal #1 Info : 30M x 0.32mm x0.5 Signal #2 Info : 30M x 0.32mm x 0.25µm





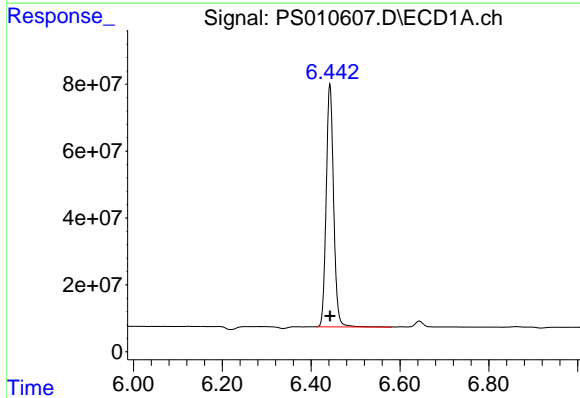
#1 Dalapon

R.T.: 3.040 min
 Delta R.T.: 0.000 min
 Response: 711145195
 Conc: 723.30 ng/ml



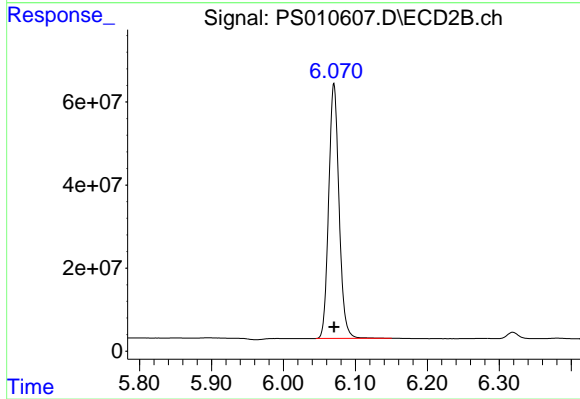
#1 Dalapon

R.T.: 2.624 min
 Delta R.T.: 0.000 min
 Response: 499292907
 Conc: 681.96 ng/ml



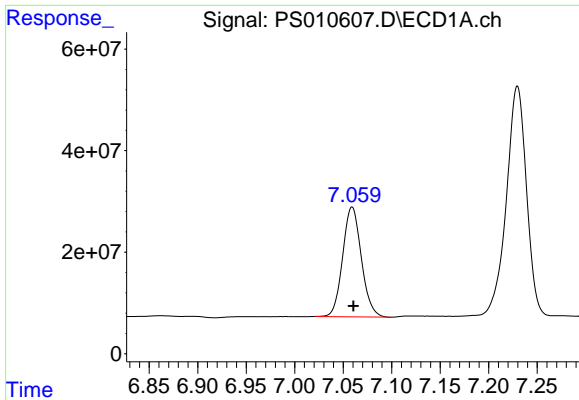
#2 3,5-DICHLOROBENZOIC ACID

R.T.: 6.442 min
 Delta R.T.: 0.000 min
 Response: 843193092
 Conc: 771.30 ng/ml



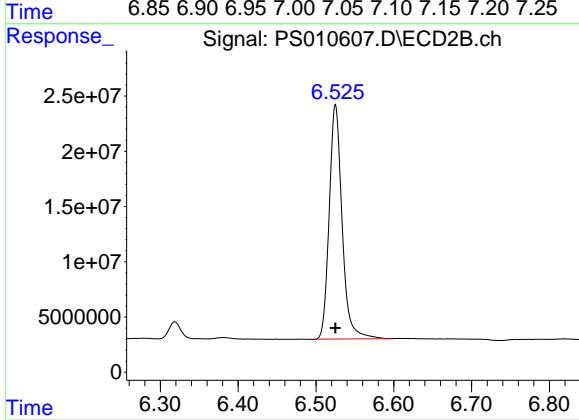
#2 3,5-DICHLOROBENZOIC ACID

R.T.: 6.070 min
 Delta R.T.: 0.000 min
 Response: 615230627
 Conc: 750.61 ng/ml



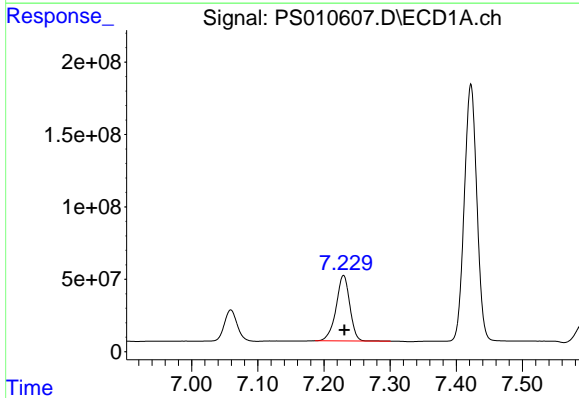
#3 4-Nitrophenol

R.T.: 7.059 min
Delta R.T.: -0.001 min
Response: 289948319
Conc: 782.10 ng/ml



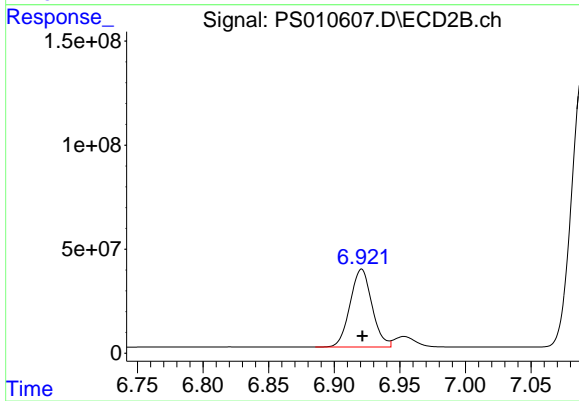
#3 4-Nitrophenol

R.T.: 6.525 min
Delta R.T.: 0.000 min
Response: 244639458
Conc: 738.51 ng/ml



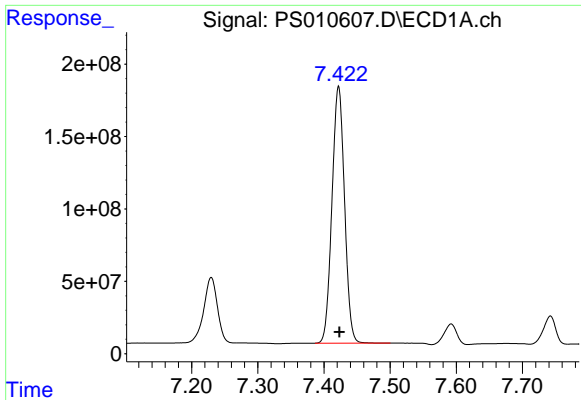
#4 2,4-DCAA

R.T.: 7.230 min
Delta R.T.: -0.002 min
Response: 651756880
Conc: 824.11 ng/ml



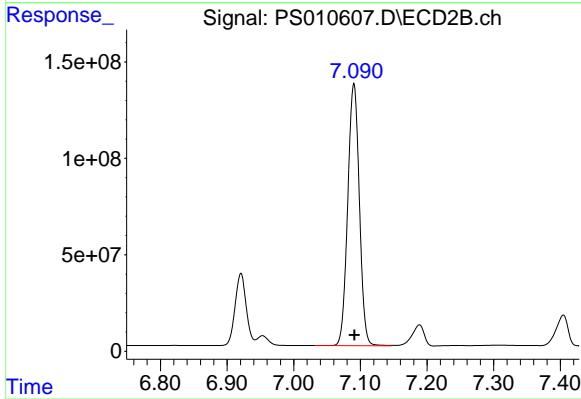
#4 2,4-DCAA

R.T.: 6.921 min
Delta R.T.: 0.000 min
Response: 435354432
Conc: 798.21 ng/ml



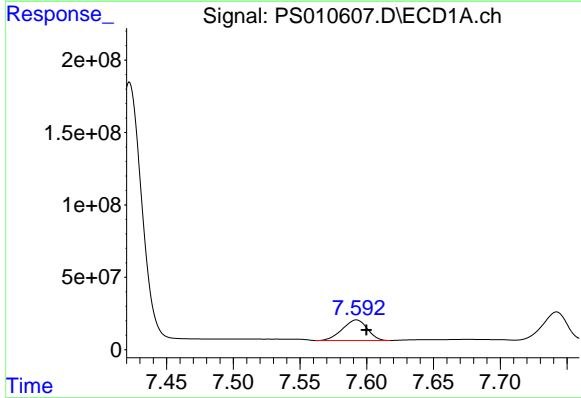
#5 DICAMBA

R.T.: 7.422 min
Delta R.T.: -0.001 min
Response: 2338173220
Conc: 743.58 ng/ml



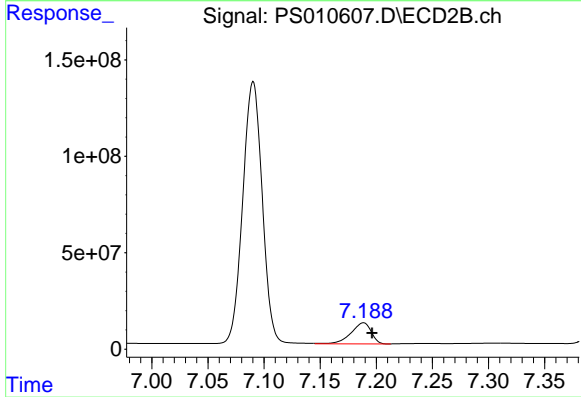
#5 DICAMBA

R.T.: 7.090 min
Delta R.T.: 0.000 min
Response: 1643180551
Conc: 730.04 ng/ml



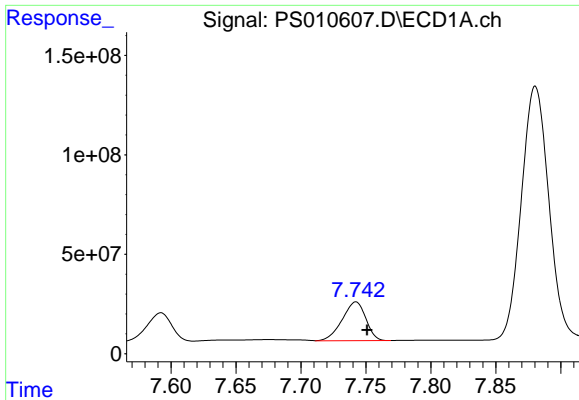
#6 MCPP

R.T.: 7.592 min
Delta R.T.: -0.007 min
Response: 184835223
Conc: 74.82 ug/ml

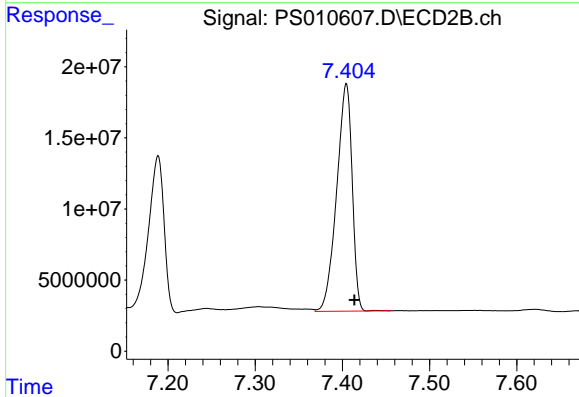


#6 MCPP

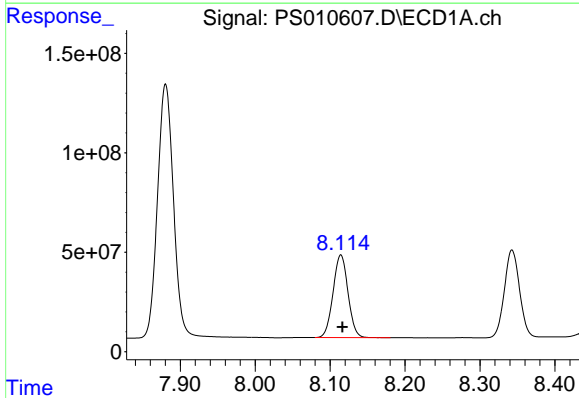
R.T.: 7.188 min
Delta R.T.: -0.008 min
Response: 138041171
Conc: 74.08 ug/ml



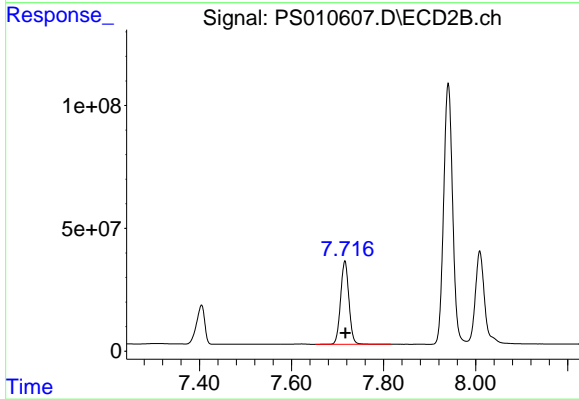
#7 MCPA
R.T.: 7.742 min
Delta R.T.: -0.009 min
Response: 246623470
Conc: 70.54 ug/ml



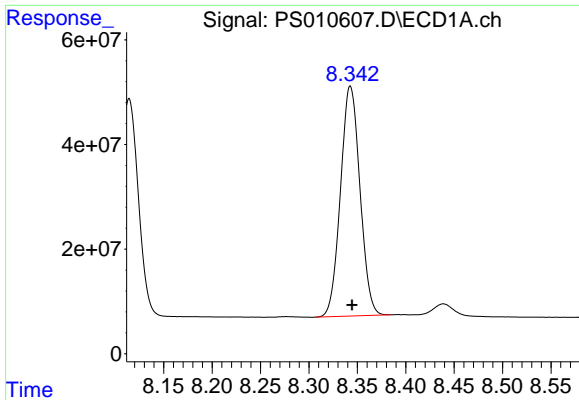
#7 MCPA
R.T.: 7.404 min
Delta R.T.: -0.010 min
Response: 197100743
Conc: 72.52 ug/ml



#8 DICHLORPROP
R.T.: 8.114 min
Delta R.T.: -0.002 min
Response: 574902102
Conc: 758.52 ng/ml

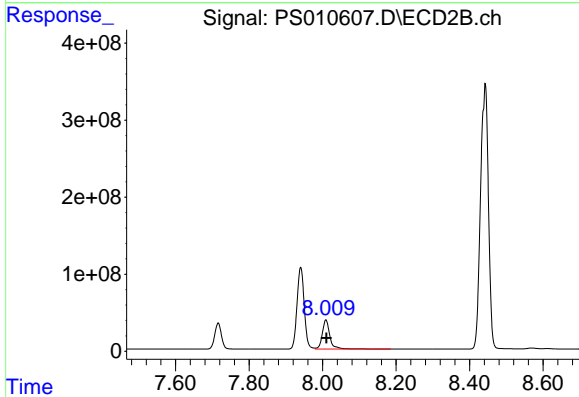


#8 DICHLORPROP
R.T.: 7.716 min
Delta R.T.: -0.001 min
Response: 426292354
Conc: 739.28 ng/ml



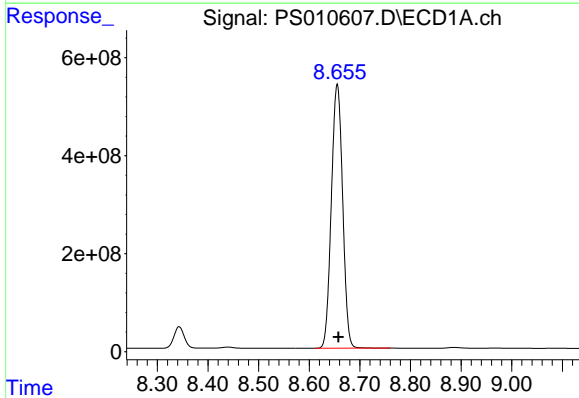
#9 2,4-D

R.T.: 8.343 min
 Delta R.T.: -0.002 min
 Response: 614828880
 Conc: 779.97 ng/ml



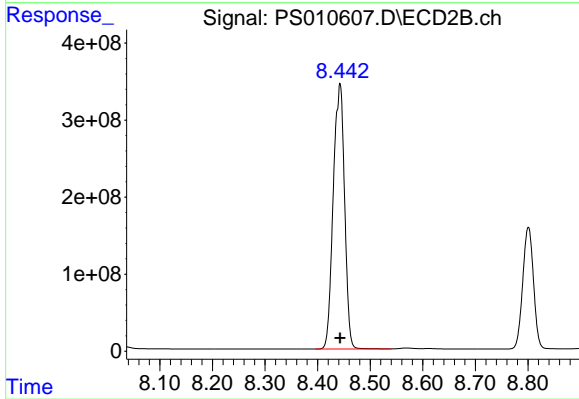
#9 2,4-D

R.T.: 8.009 min
 Delta R.T.: -0.001 min
 Response: 538770051
 Conc: 710.54 ng/ml



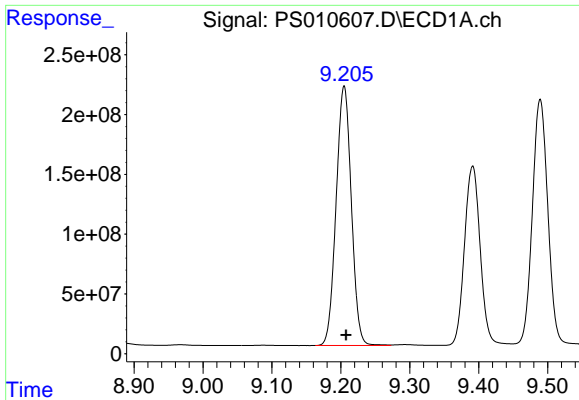
#10 Pentachlorophenol

R.T.: 8.655 min
 Delta R.T.: -0.002 min
 Response: 8342511401
 Conc: 782.15 ng/ml

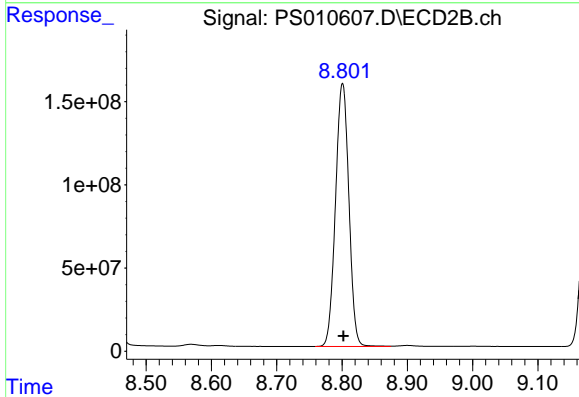


#10 Pentachlorophenol

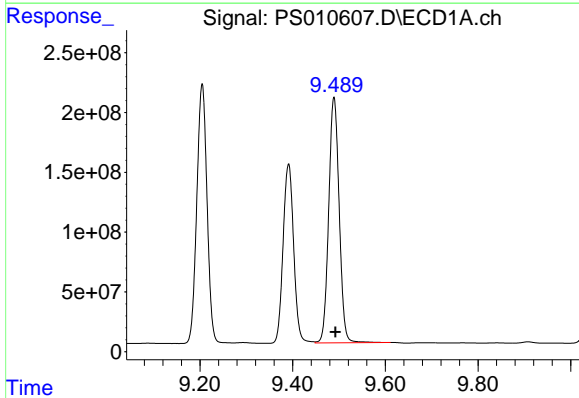
R.T.: 8.442 min
 Delta R.T.: 0.000 min
 Response: 5156456483
 Conc: 725.81 ng/ml



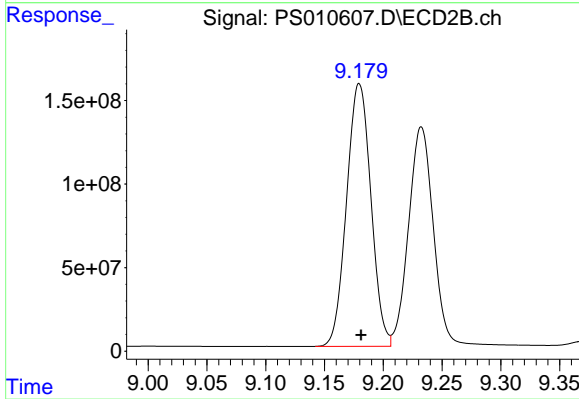
#11 2,4,5-TP (SILVEX)
 R.T.: 9.205 min
 Delta R.T.: -0.003 min
 Response: 3322276100
 Conc: 776.81 ng/ml



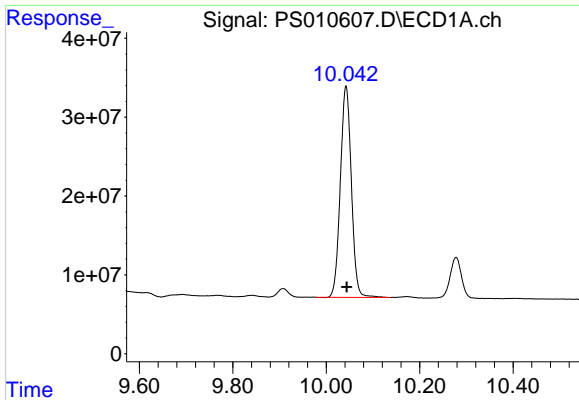
#11 2,4,5-TP (SILVEX)
 R.T.: 8.801 min
 Delta R.T.: -0.001 min
 Response: 2246804361
 Conc: 748.11 ng/ml



#12 2,4,5-T
 R.T.: 9.489 min
 Delta R.T.: -0.003 min
 Response: 3218239053
 Conc: 791.30 ng/ml

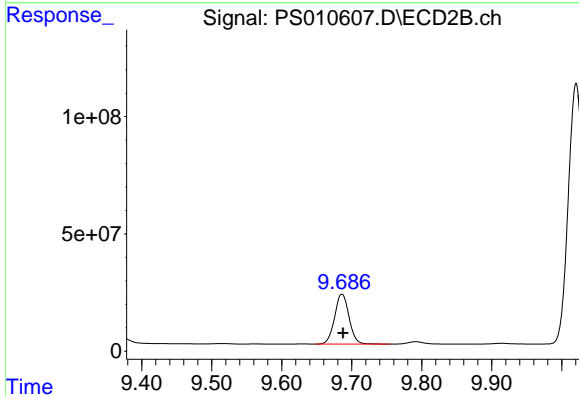


#12 2,4,5-T
 R.T.: 9.180 min
 Delta R.T.: -0.002 min
 Response: 2267333602
 Conc: 755.55 ng/ml



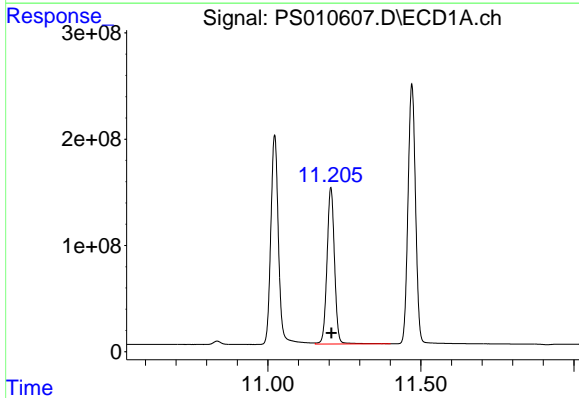
#13 2,4-DB

R.T.: 10.042 min
Delta R.T.: -0.002 min
Response: 438691824
Conc: 793.40 ng/ml



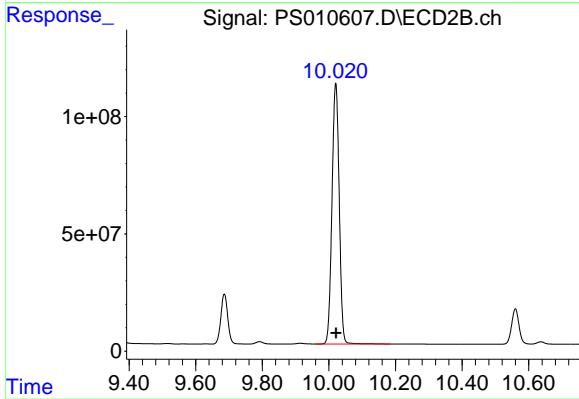
#13 2,4-DB

R.T.: 9.686 min
Delta R.T.: -0.001 min
Response: 304934087
Conc: 750.66 ng/ml



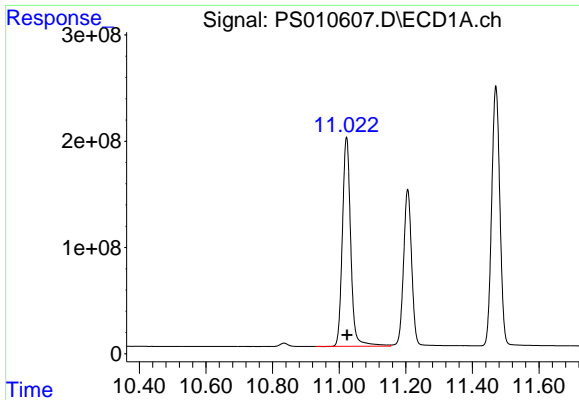
#14 DINOSEB

R.T.: 11.206 min
Delta R.T.: -0.002 min
Response: 2506441533
Conc: 775.73 ng/ml

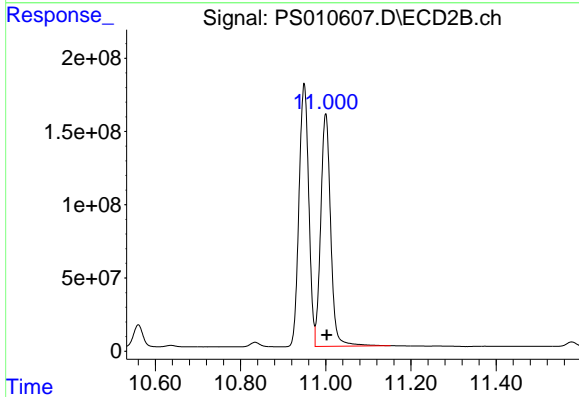


#14 DINOSEB

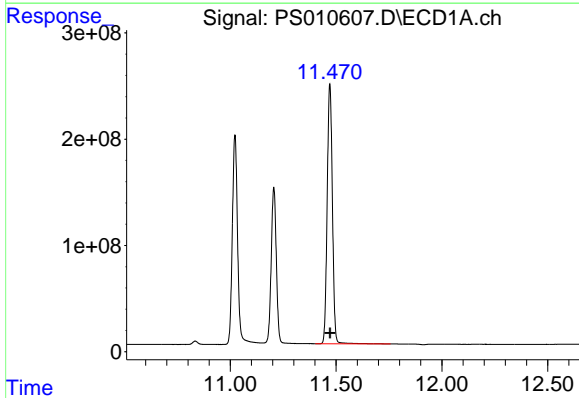
R.T.: 10.021 min
Delta R.T.: -0.001 min
Response: 1672937397
Conc: 777.59 ng/ml



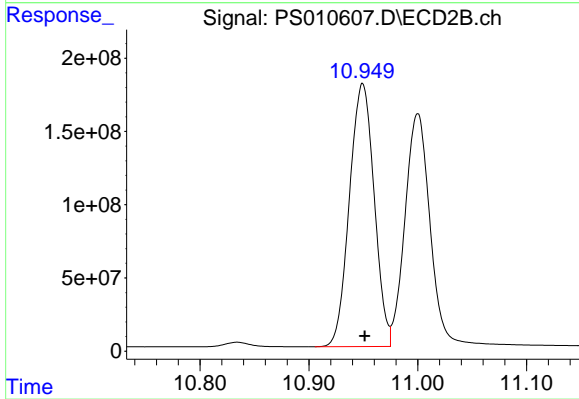
#15 Picloram
R.T.: 11.022 min
Delta R.T.: -0.002 min
Response: 3433353113
Conc: 672.53 ng/ml



#15 Picloram
R.T.: 11.000 min
Delta R.T.: -0.002 min
Response: 2578631634
Conc: 624.98 ng/ml



#16 DCPA
R.T.: 11.470 min
Delta R.T.: -0.002 min
Response: 4185785544
Conc: 781.23 ng/ml



#16 DCPA
R.T.: 10.949 min
Delta R.T.: -0.002 min
Response: 2834703598
Conc: 764.44 ng/ml