

Data Path : Z:\pestpcbsrv\HPCHEM1\ECD_S\Data\PS060122\
 Data File : PS019582.D
 Signal(s) : Signal #1: ECD1A.ch Signal #2: ECD2B.ch
 Acq On : 01 Jun 2022 09:55
 Operator : AJ\MA
 Sample : I.BLK
 Misc :
 ALS Vial : 2 Sample Multiplier: 1

Instrument :
 ECD_S
 ClientSampleId :

Integration File signal 1: autoint1.e
 Integration File signal 2: autoint2.e
 Quant Time: Jun 02 03:54:39 2022
 Quant Method : Z:\pestpcbsrv\HPCHEM1\ECD_S\Method\PS052422.M
 Quant Title : 8080.M
 QLast Update : Wed May 25 02:05:34 2022
 Response via : Initial Calibration
 Integrator: ChemStation

Volume Inj. : 2 µl
 Signal #1 Phase : Rtx-CLPesticides Signal #2 Phase: Rtx-CLPesticides2
 Signal #1 Info : 30M x 0.32mm x0.5 Signal #2 Info : 30M x 0.32mm x 0.25µm

	Compound	RT#1	RT#2	Resp#1	Resp#2	ng/ml	ng/ml

System Monitoring Compounds							
4) S	2,4-DCAA	7.200	6.784	994.6E6	404.7E6	414.569	522.274 #
Target Compounds							
2) T	3,5-DICHL...	6.357f	0.000	238637	0	<MDL	N.D. #
5) T	DICAMBA	0.000	7.002f	0	1479508	N.D.	<MDL
6) T	MCPD	0.000	7.002	0	1479508	N.D.	<MDL
7) T	MCPA	7.662	7.180f	1297107	4520001	<MDL	1.176 #
10) T	Pentachlo...	8.616	0.000	677592	0	<MDL	N.D. #
11) T	2,4,5-TP ...	9.118f	8.629	728617	37638	<MDL	<MDL #
12) T	2,4,5-T	9.451	9.057	6536398	302333	<MDL	<MDL #
13) T	2,4-DB	10.019	9.474f	4008173	593495	<MDL	<MDL #
15) T	Picloram	10.969	10.887f	86049914	5038146	2.900	<MDL #
16) T	DCPA	11.426	10.778	2323049	613270	<MDL	<MDL #

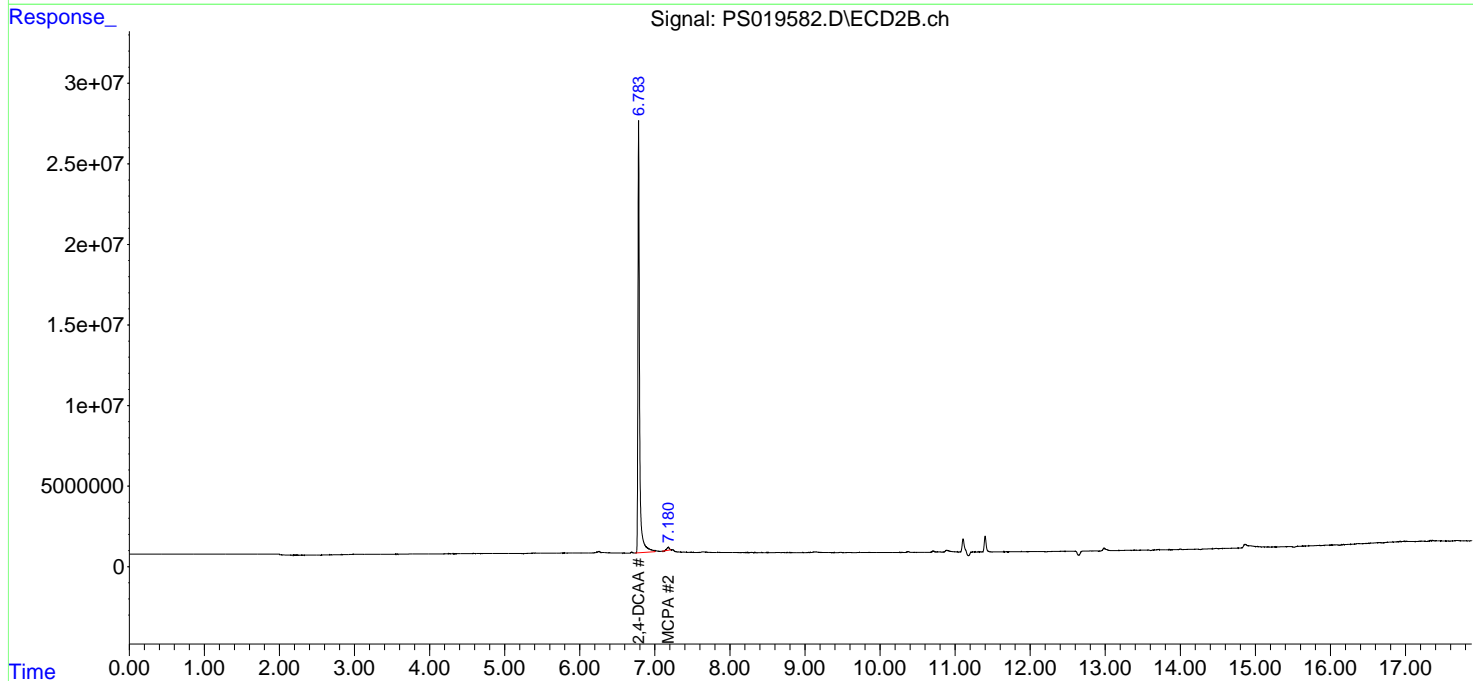
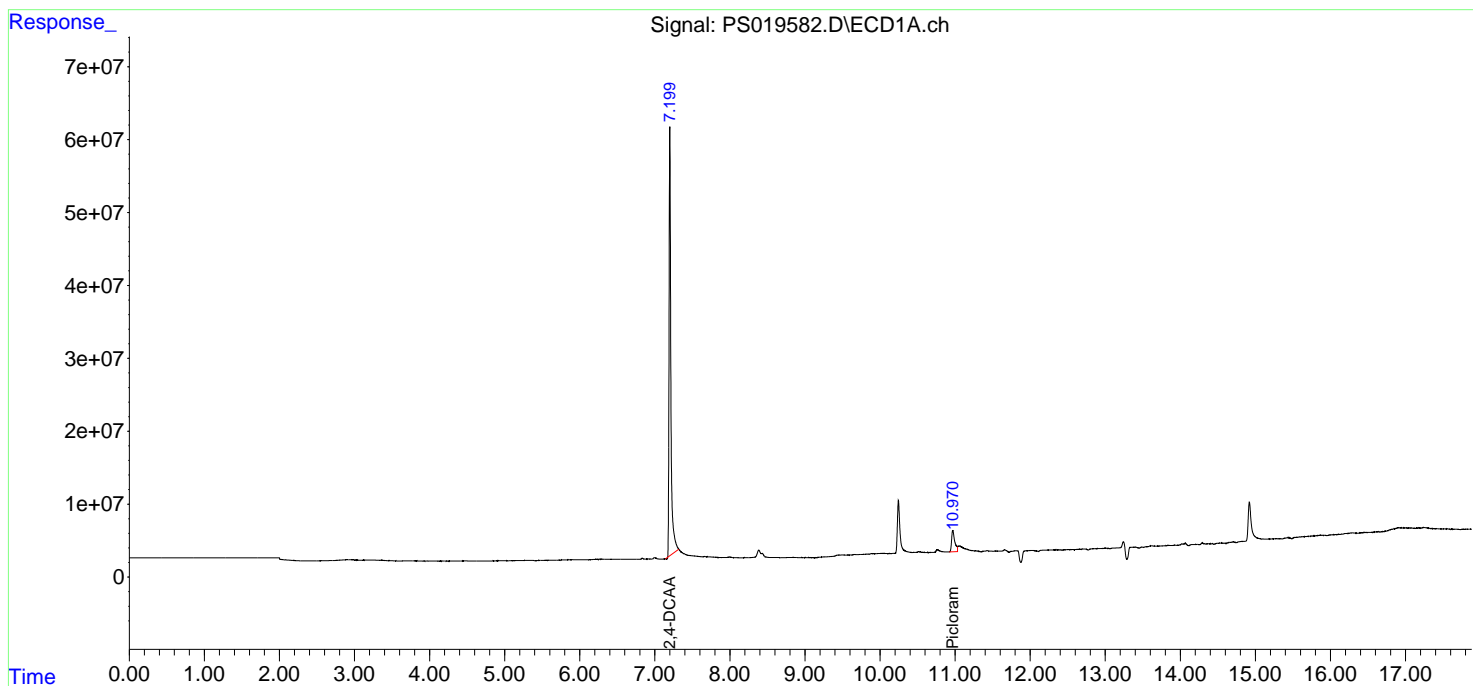
(f)=RT Delta > 1/2 Window (#)=Amounts differ by > 25% (m)=manual int.

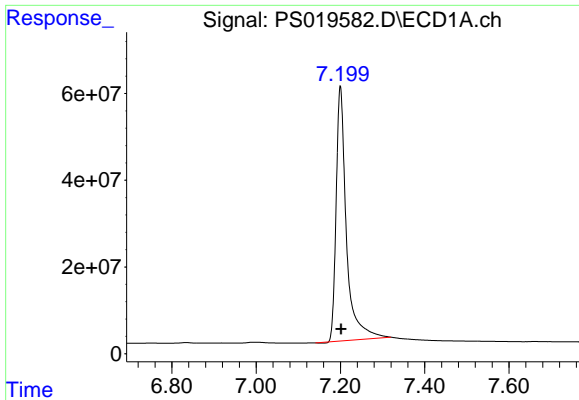
Data Path : Z:\pestpcbsrv\HPCHEM1\ECD_S\Data\PS060122\
 Data File : PS019582.D
 Signal(s) : Signal #1: ECD1A.ch Signal #2: ECD2B.ch
 Acq On : 01 Jun 2022 09:55
 Operator : AJ\MA
 Sample : I.BLK
 Misc :
 ALS Vial : 2 Sample Multiplier: 1

Instrument :
 ECD_S
 ClientSampleId :

Integration File signal 1: autoint1.e
 Integration File signal 2: autoint2.e
 Quant Time: Jun 02 03:54:39 2022
 Quant Method : Z:\pestpcbsrv\HPCHEM1\ECD_S\Method\PS052422.M
 Quant Title : 8080.M
 QLast Update : Wed May 25 02:05:34 2022
 Response via : Initial Calibration
 Integrator: ChemStation

Volume Inj. : 2 µl
 Signal #1 Phase : Rtx-CLPesticides Signal #2 Phase: Rtx-CLPesticides2
 Signal #1 Info : 30M x 0.32mm x0.5 Signal #2 Info : 30M x 0.32mm x 0.25µm

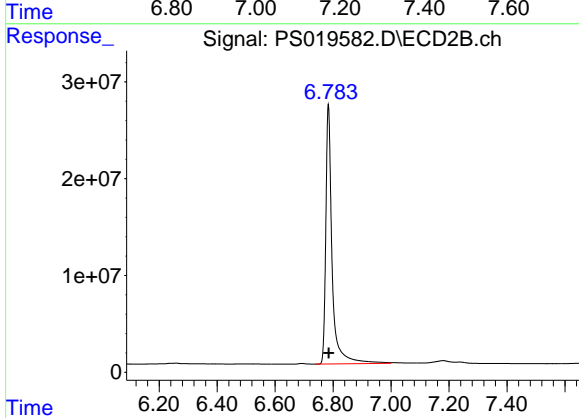




#4 2,4-DCAA

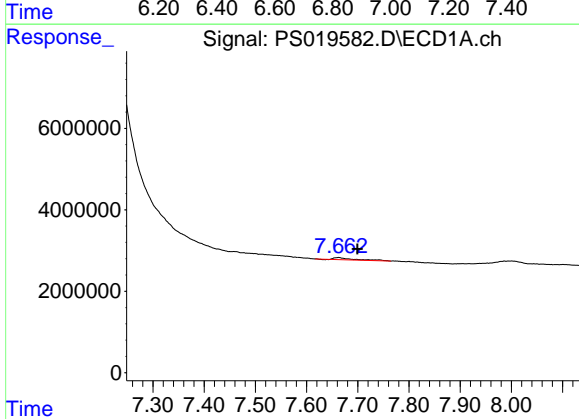
R.T.: 7.200 min
 Delta R.T.: -0.002 min
 Response: 994621282
 Conc: 414.57 ng/ml

Instrument :
 ECD_S
 ClientSampleId :



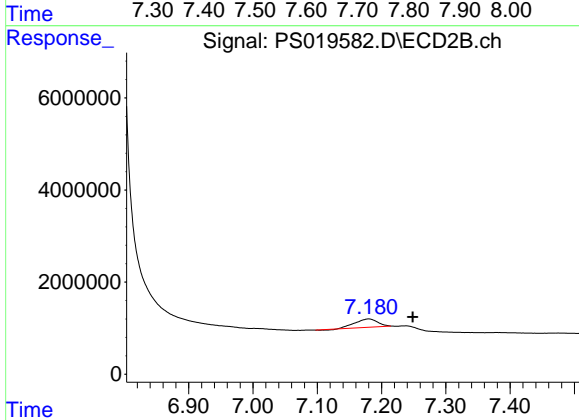
#4 2,4-DCAA

R.T.: 6.784 min
 Delta R.T.: -0.001 min
 Response: 404694517
 Conc: 522.27 ng/ml



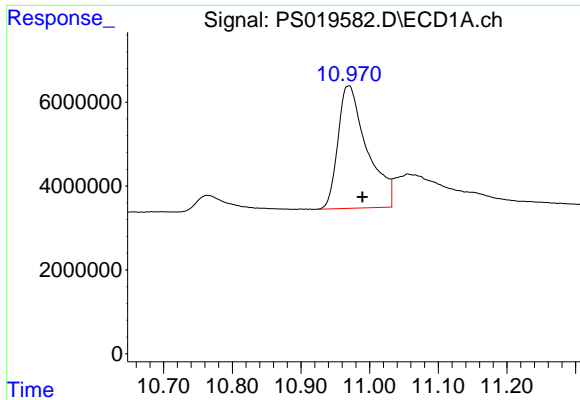
#7 MCPA

R.T.: 7.662 min
 Delta R.T.: -0.037 min
 Response: 1297107
 Conc: N.D.



#7 MCPA

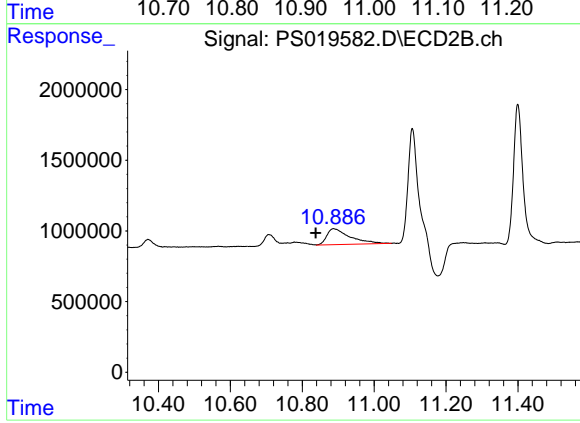
R.T.: 7.180 min
 Delta R.T.: -0.069 min
 Response: 4520001
 Conc: 1.18 ug/ml



#15 Picloram

R.T.: 10.969 min
Delta R.T.: -0.020 min
Response: 86049914
Conc: 2.90 ng/ml

Instrument :
ECD_S
ClientSampleId :



#15 Picloram

R.T.: 10.887 min
Delta R.T.: 0.049 min
Response: 5038146
Conc: N.D.