

Data Path : Z:\pestpcbsrv\HPCHEM1\ECD_S\Data\PS060122\
 Data File : PS019587.D
 Signal(s) : Signal #1: ECD1A.ch Signal #2: ECD2B.ch
 Acq On : 01 Jun 2022 13:18
 Operator : AJ\MA
 Sample : HSTDCCC750
 Misc :
 ALS Vial : 3 Sample Multiplier: 1

Instrument :
 ECD_S
 ClientSampleId :

Integration File signal 1: autoint1.e
 Integration File signal 2: autoint2.e
 Quant Time: Jun 02 03:55:51 2022
 Quant Method : Z:\pestpcbsrv\HPCHEM1\ECD_S\Method\PS052422.M
 Quant Title : 8080.M
 QLast Update : Wed May 25 02:05:34 2022
 Response via : Initial Calibration
 Integrator: ChemStation

Volume Inj. : 2 µl
 Signal #1 Phase : Rtx-CLPesticides Signal #2 Phase: Rtx-CLPesticides2
 Signal #1 Info : 30M x 0.32mm x0.5 Signal #2 Info : 30M x 0.32mm x 0.25µm

	Compound	RT#1	RT#2	Resp#1	Resp#2	ng/ml	ng/ml

System Monitoring Compounds							
4) S	2,4-DCAA	7.198	6.783	1846.4E6	607.9E6	769.611	784.523
Target Compounds							
1) T	Dalapon	3.015	2.529	3230.1E6	710.1E6	637.255	707.671
2) T	3,5-DICHL...	6.411	5.962	2255.4E6	886.1E6	713.599	739.209
3) T	4-Nitroph...	7.029	6.400	755.6E6	309.0E6	769.973	721.825
5) T	DICAMBA	7.387	6.947	6877.6E6	2570.7E6	724.129	752.007
6) T	MCPD	7.557	7.045	546.4E6	202.7E6	72.795	74.879
7) T	MCPA	7.705	7.257	773.4E6	281.9E6	71.585	73.351
8) T	DICHLORPROP	8.078	7.567	1824.6E6	655.0E6	712.577	741.425
9) T	2,4-D	8.307	7.859	2131.9E6	791.6E6	745.550	742.177
10) T	Pentachlo...	8.614	8.284	25036.0E6	8676.4E6	723.817	744.357
11) T	2,4,5-TP ...	9.164	8.644	11279.6E6	3785.1E6	718.405	752.927
12) T	2,4,5-T	9.449	9.022	13419.6E6	3568.8E6	713.061	758.793
13) T	2,4-DB	10.001	9.527	3036.6E6	468.1E6	750.525	757.522
14) T	DINOSEB	11.156	9.852	11570.2E6	2677.0E6	748.048	753.524
15) T	Picloram	10.979	10.833	22123.4E6	4737.5E6	745.468	736.528
16) T	DCPA	11.424	10.781	18034.1E6	4639.6E6	748.179	751.663

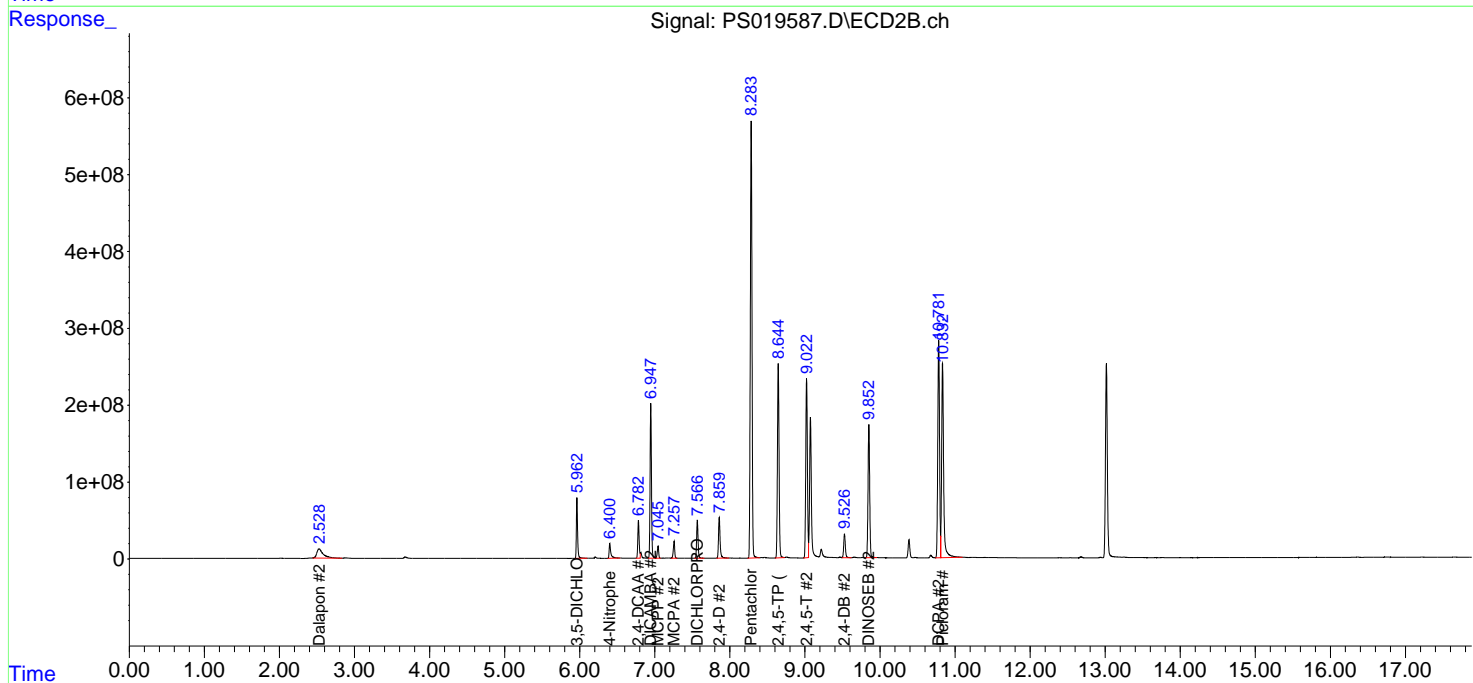
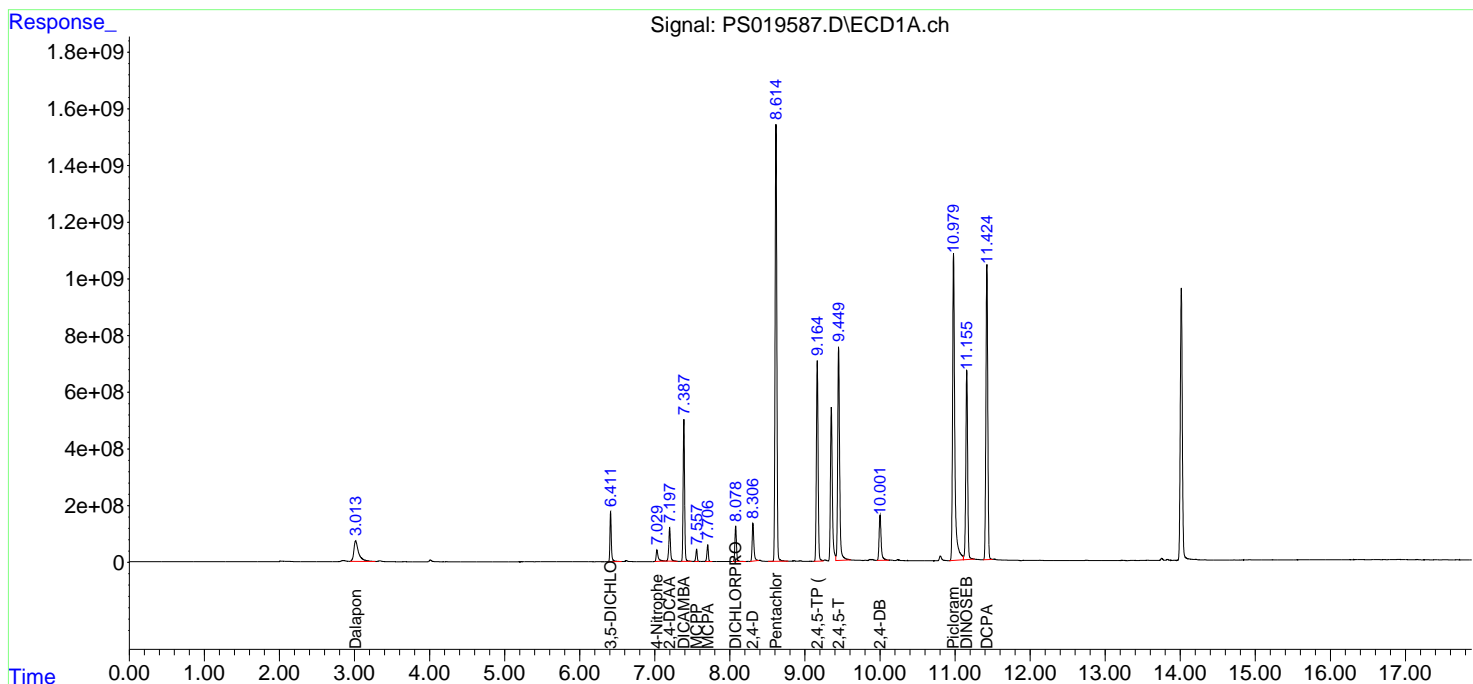
(f)=RT Delta > 1/2 Window (#)=Amounts differ by > 25% (m)=manual int.

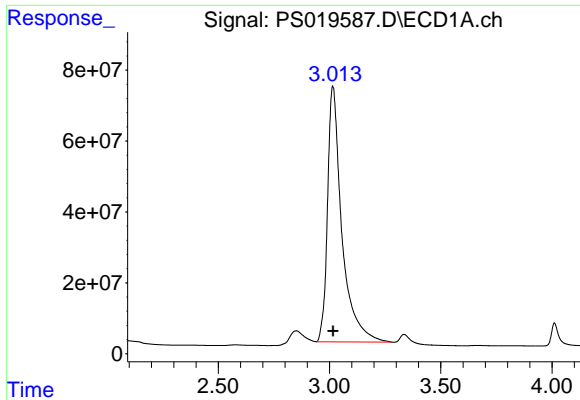
Data Path : Z:\pestpcbsrv\HPCHEM1\ECD_S\Data\PS060122\
 Data File : PS019587.D
 Signal(s) : Signal #1: ECD1A.ch Signal #2: ECD2B.ch
 Acq On : 01 Jun 2022 13:18
 Operator : AJ\MA
 Sample : HSTDCCC750
 Misc :
 ALS Vial : 3 Sample Multiplier: 1

Instrument :
 ECD_S
 ClientSampleId :

Integration File signal 1: autoint1.e
 Integration File signal 2: autoint2.e
 Quant Time: Jun 02 03:55:51 2022
 Quant Method : Z:\pestpcbsrv\HPCHEM1\ECD_S\Method\PS052422.M
 Quant Title : 8080.M
 QLast Update : Wed May 25 02:05:34 2022
 Response via : Initial Calibration
 Integrator: ChemStation

Volume Inj. : 2 µl
 Signal #1 Phase : Rtx-CLPesticides Signal #2 Phase: Rtx-CLPesticides2
 Signal #1 Info : 30M x 0.32mm x0.5 Signal #2 Info : 30M x 0.32mm x 0.25µm

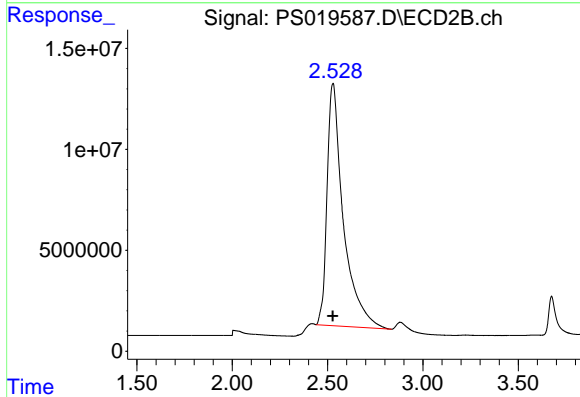




#1 Dalapon

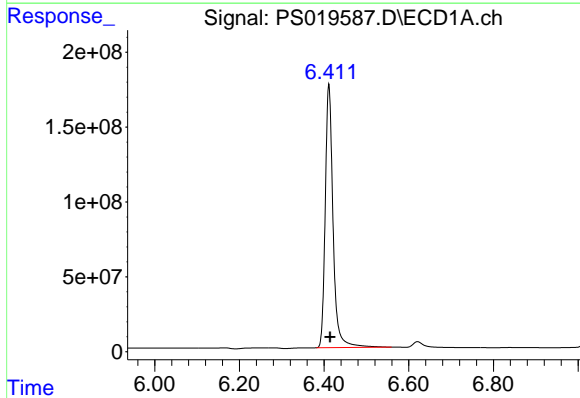
R.T.: 3.015 min
 Delta R.T.: -0.001 min
 Response: 3230095508
 Conc: 637.25 ng/ml

Instrument :
 ECD_S
 ClientSampleId :



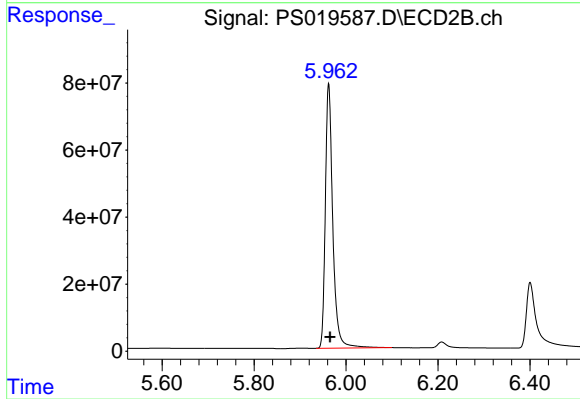
#1 Dalapon

R.T.: 2.529 min
 Delta R.T.: 0.001 min
 Response: 710107132
 Conc: 707.67 ng/ml



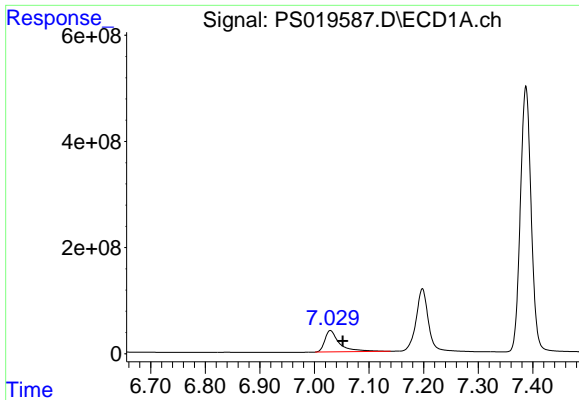
#2 3,5-DICHLOROBENZOIC ACID

R.T.: 6.411 min
 Delta R.T.: -0.003 min
 Response: 2255427058
 Conc: 713.60 ng/ml



#2 3,5-DICHLOROBENZOIC ACID

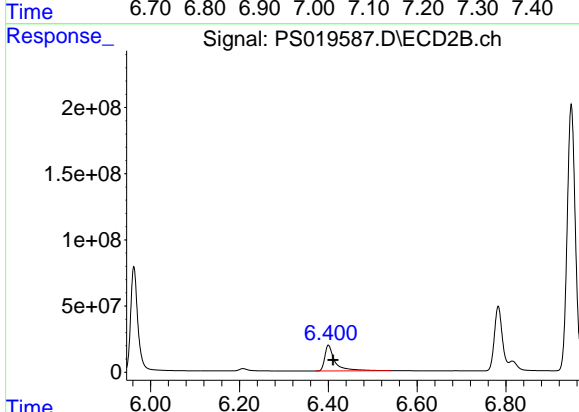
R.T.: 5.962 min
 Delta R.T.: -0.003 min
 Response: 886070354
 Conc: 739.21 ng/ml



#3 4-Nitrophenol

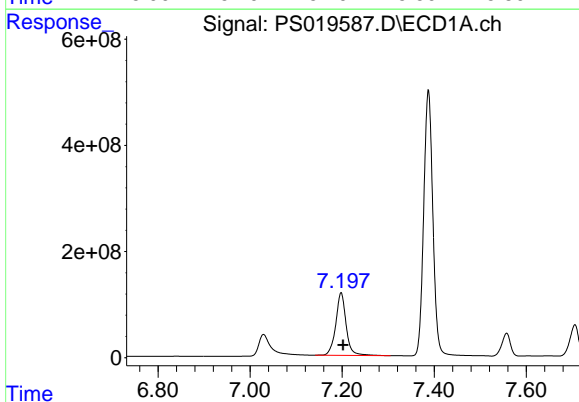
R.T.: 7.029 min
 Delta R.T.: -0.023 min
 Response: 755588171
 Conc: 769.97 ng/ml

Instrument :
 ECD_S
 ClientSampleId :



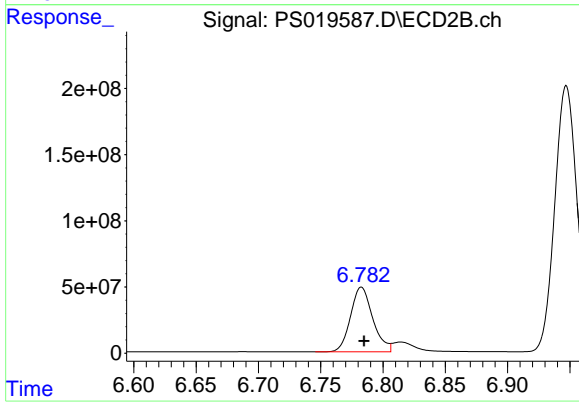
#3 4-Nitrophenol

R.T.: 6.400 min
 Delta R.T.: -0.010 min
 Response: 308967053
 Conc: 721.82 ng/ml



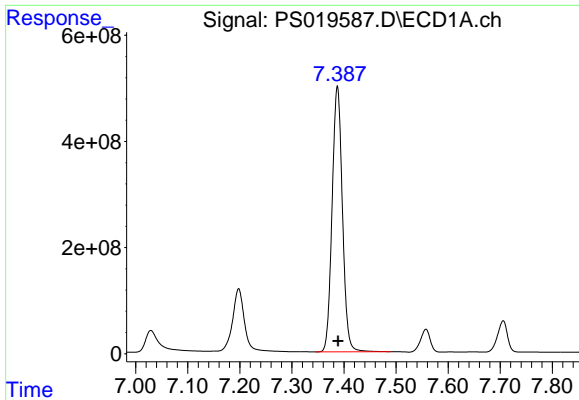
#4 2,4-DCAA

R.T.: 7.198 min
 Delta R.T.: -0.004 min
 Response: 1846424722
 Conc: 769.61 ng/ml



#4 2,4-DCAA

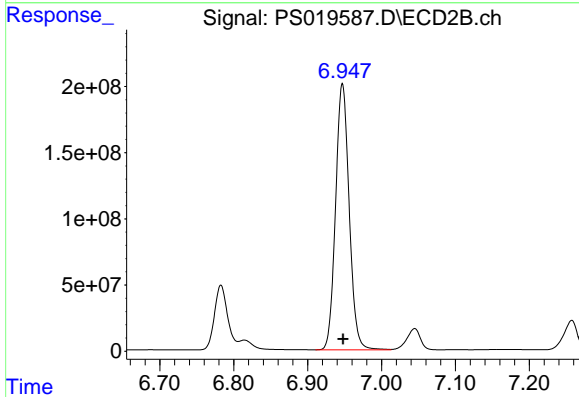
R.T.: 6.783 min
 Delta R.T.: -0.002 min
 Response: 607903856
 Conc: 784.52 ng/ml



#5 DICAMBA

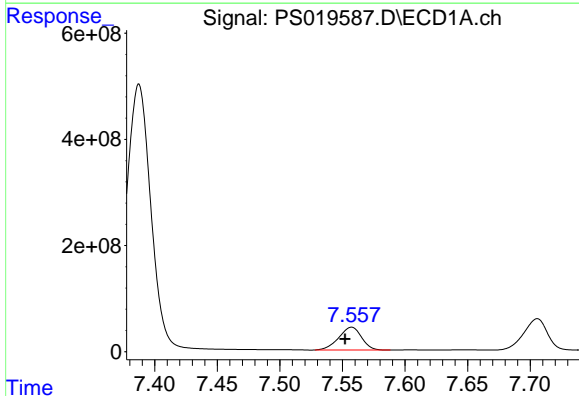
R.T.: 7.387 min
 Delta R.T.: -0.001 min
 Response: 6877603731
 Conc: 724.13 ng/ml

Instrument :
 ECD_S
 ClientSampleId :



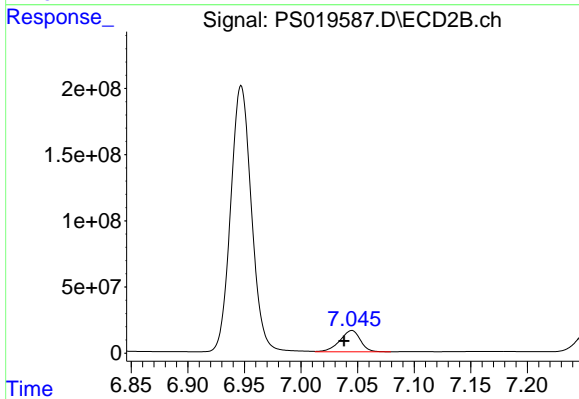
#5 DICAMBA

R.T.: 6.947 min
 Delta R.T.: 0.000 min
 Response: 2570693561
 Conc: 752.01 ng/ml



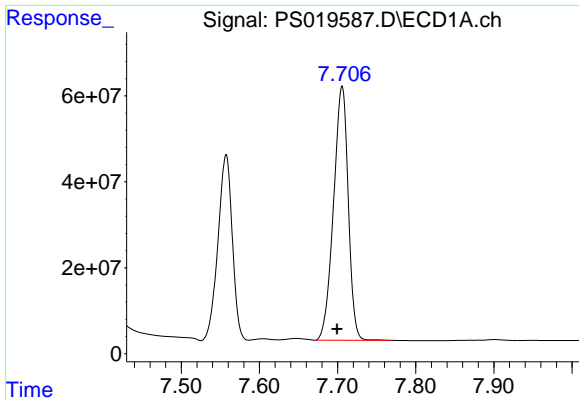
#6 MCP

R.T.: 7.557 min
 Delta R.T.: 0.005 min
 Response: 546362326
 Conc: 72.79 ug/ml



#6 MCP

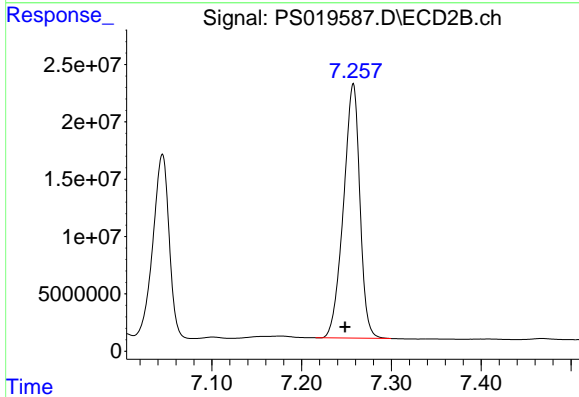
R.T.: 7.045 min
 Delta R.T.: 0.007 min
 Response: 202699733
 Conc: 74.88 ug/ml



#7 MCPA

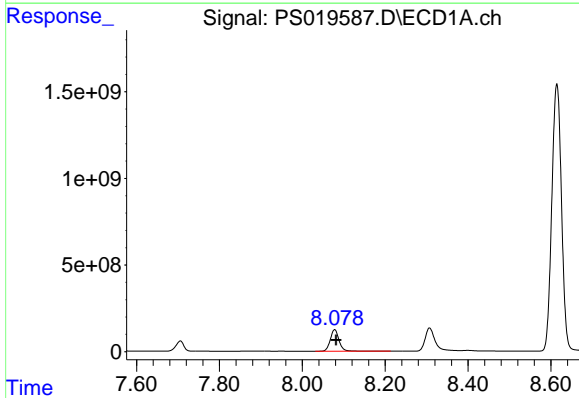
R.T.: 7.705 min
 Delta R.T.: 0.006 min
 Response: 773401606
 Conc: 71.59 ug/ml

Instrument :
 ECD_S
 ClientSampleId :



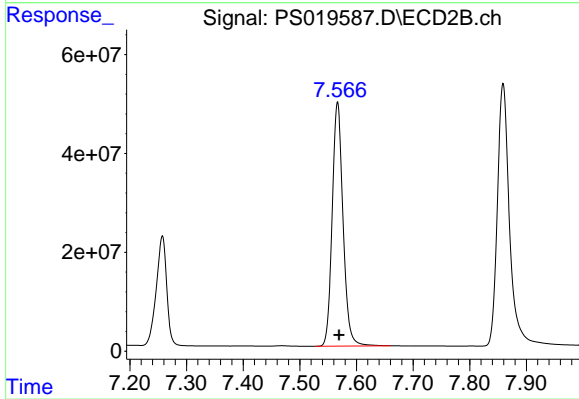
#7 MCPA

R.T.: 7.257 min
 Delta R.T.: 0.009 min
 Response: 281854203
 Conc: 73.35 ug/ml



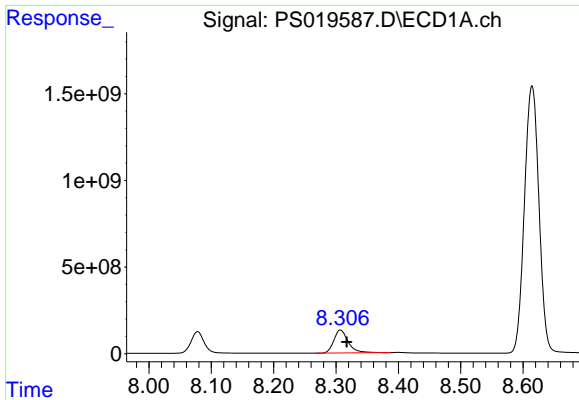
#8 DICHLORPROP

R.T.: 8.078 min
 Delta R.T.: -0.003 min
 Response: 1824631883
 Conc: 712.58 ng/ml



#8 DICHLORPROP

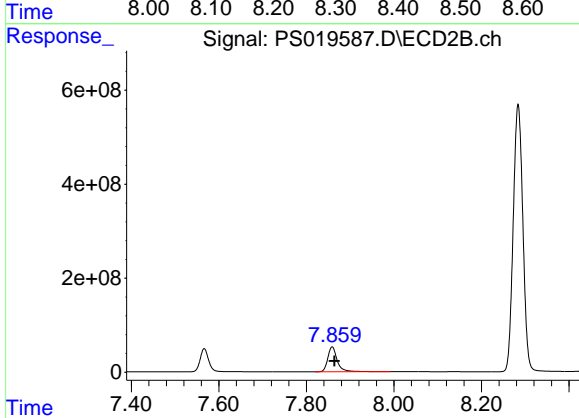
R.T.: 7.567 min
 Delta R.T.: -0.002 min
 Response: 654954231
 Conc: 741.43 ng/ml



#9 2,4-D

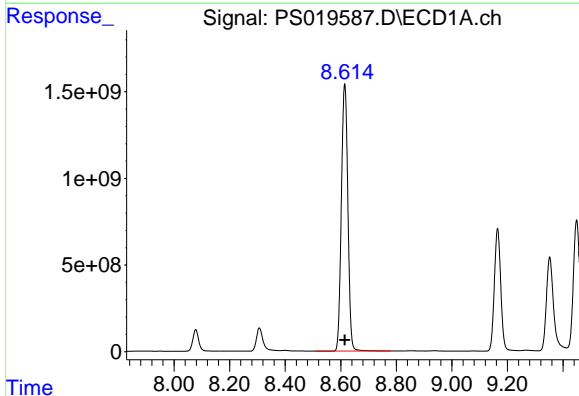
R.T.: 8.307 min
Delta R.T.: -0.010 min
Response: 2131893840
Conc: 745.55 ng/ml

Instrument :
ECD_S
ClientSampleId :



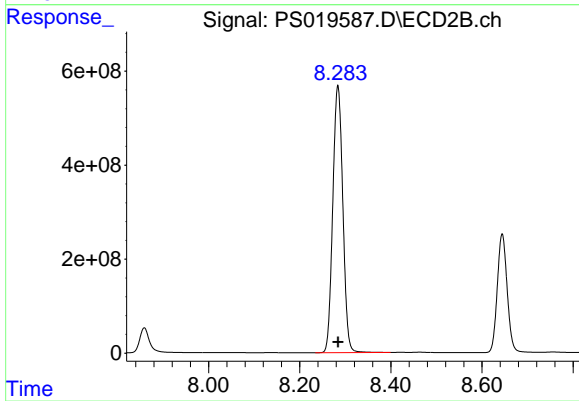
#9 2,4-D

R.T.: 7.859 min
Delta R.T.: -0.005 min
Response: 791626360
Conc: 742.18 ng/ml



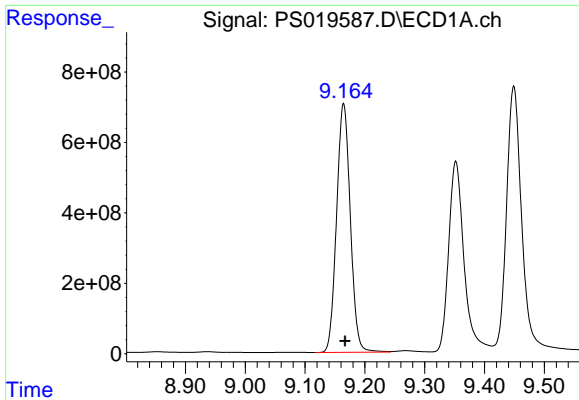
#10 Pentachlorophenol

R.T.: 8.614 min
Delta R.T.: 0.000 min
Response: 25036008948
Conc: 723.82 ng/ml



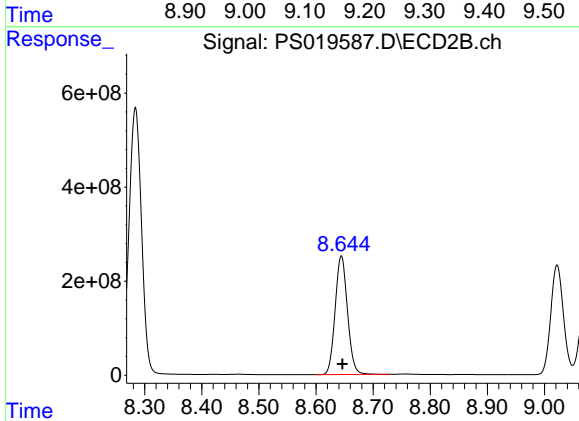
#10 Pentachlorophenol

R.T.: 8.284 min
Delta R.T.: 0.000 min
Response: 8676407453
Conc: 744.36 ng/ml

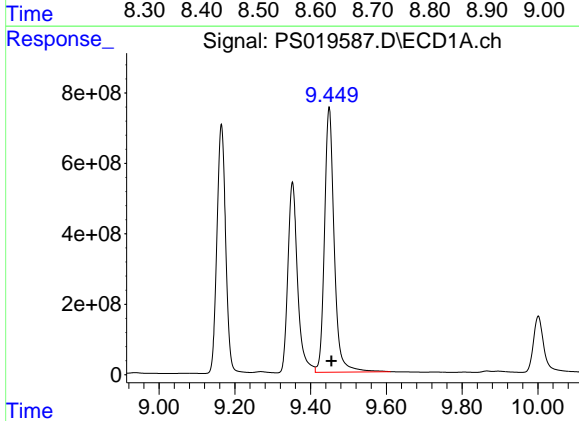


#11 2,4,5-TP (SILVEX)
 R.T.: 9.164 min
 Delta R.T.: -0.003 min
 Response: 11279642396
 Conc: 718.41 ng/ml

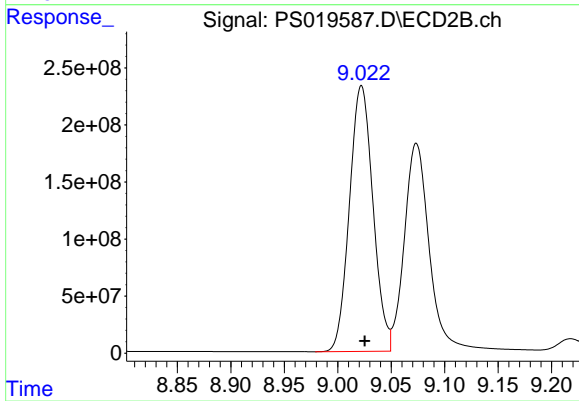
Instrument :
 ECD_S
 ClientSampleId :



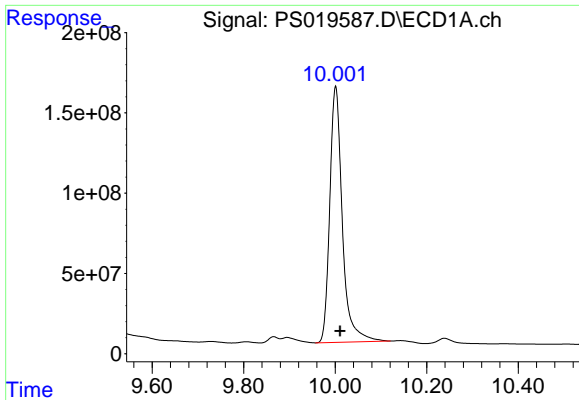
#11 2,4,5-TP (SILVEX)
 R.T.: 8.644 min
 Delta R.T.: -0.002 min
 Response: 3785085635
 Conc: 752.93 ng/ml



#12 2,4,5-T
 R.T.: 9.449 min
 Delta R.T.: -0.006 min
 Response: 13419578159
 Conc: 713.06 ng/ml



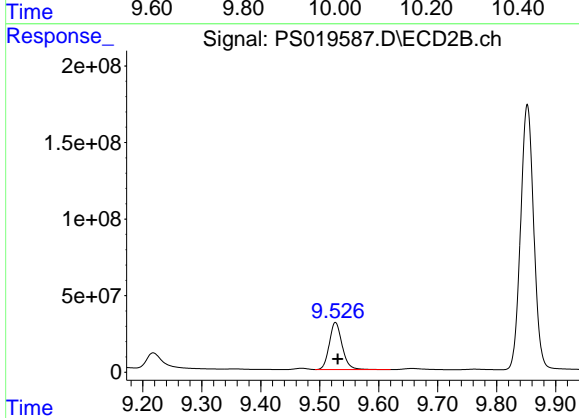
#12 2,4,5-T
 R.T.: 9.022 min
 Delta R.T.: -0.003 min
 Response: 3568760839
 Conc: 758.79 ng/ml



#13 2,4-DB

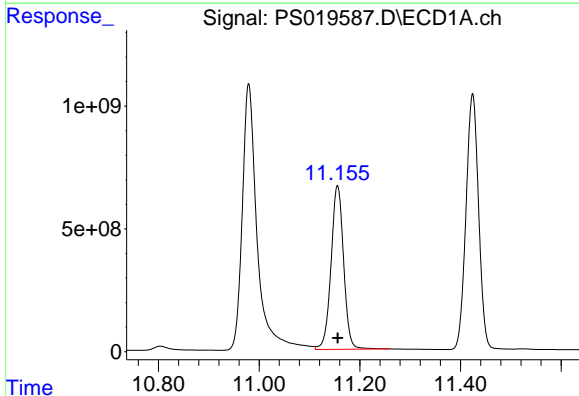
R.T.: 10.001 min
 Delta R.T.: -0.009 min
 Response: 3036637059
 Conc: 750.52 ng/ml

Instrument :
 ECD_S
 ClientSampleId :



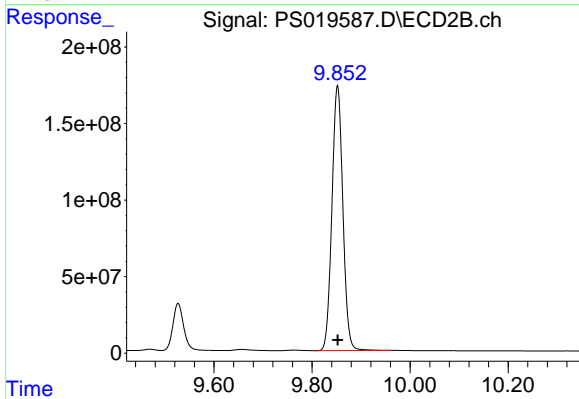
#13 2,4-DB

R.T.: 9.527 min
 Delta R.T.: -0.004 min
 Response: 468122008
 Conc: 757.52 ng/ml



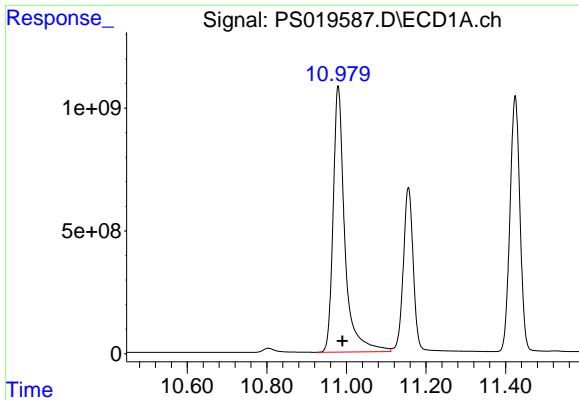
#14 DINOSEB

R.T.: 11.156 min
 Delta R.T.: 0.000 min
 Response: 11570189089
 Conc: 748.05 ng/ml



#14 DINOSEB

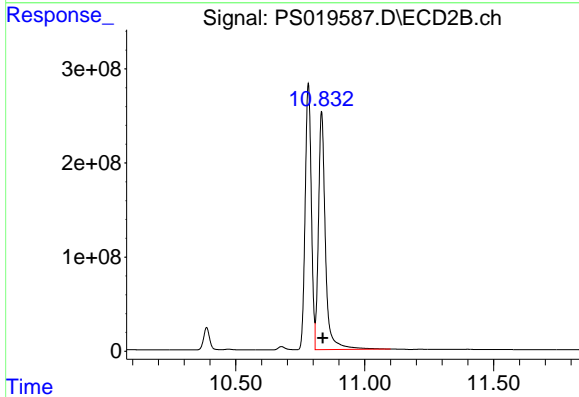
R.T.: 9.852 min
 Delta R.T.: 0.000 min
 Response: 2676983130
 Conc: 753.52 ng/ml



#15 Picloram

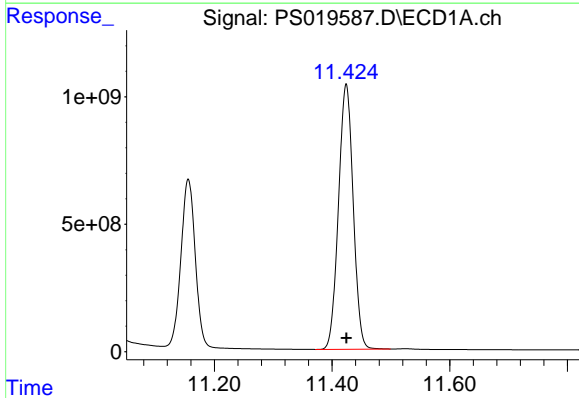
R.T.: 10.979 min
 Delta R.T.: -0.010 min
 Response: 22123445449
 Conc: 745.47 ng/ml

Instrument :
 ECD_S
 ClientSampleId :



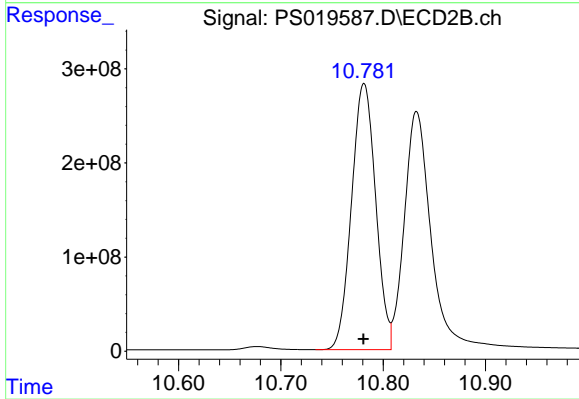
#15 Picloram

R.T.: 10.833 min
 Delta R.T.: -0.005 min
 Response: 4737535934
 Conc: 736.53 ng/ml



#16 DCPA

R.T.: 11.424 min
 Delta R.T.: 0.000 min
 Response: 18034119813
 Conc: 748.18 ng/ml



#16 DCPA

R.T.: 10.781 min
 Delta R.T.: 0.000 min
 Response: 4639627374
 Conc: 751.66 ng/ml