

Data Path : Z:\pestpcbsrv\HPCHEM1\ECD\_S\Data\PS060123\  
 Data File : PS023171.D  
 Signal(s) : Signal #1: ECD1A.ch Signal #2: ECD2B.ch  
 Acq On : 01 Jun 2023 09:43  
 Operator : AR\AJ  
 Sample : HEXANE  
 Misc :  
 ALS Vial : 1 Sample Multiplier: 1

Instrument :  
 ECD\_S  
 ClientSampleId :

Integration File signal 1: autoint1.e  
 Integration File signal 2: autoint2.e  
 Quant Time: Jun 02 03:44:58 2023  
 Quant Method : Z:\pestpcbsrv\HPCHEM1\ECD\_S\Method\PS051023.M  
 Quant Title : 8080.M  
 QLast Update : Wed May 10 16:09:19 2023  
 Response via : Initial Calibration  
 Integrator: ChemStation

Volume Inj. : 2 µl  
 Signal #1 Phase : Rtx-CLPesticides Signal #2 Phase: Rtx-CLPesticides2  
 Signal #1 Info : 30M x 0.32mm x0.5 Signal #2 Info : 30M x 0.32mm x 0.25µm

Compound	RT#1	RT#2	Resp#1	Resp#2	ng/ml	ng/ml
System Monitoring Compounds						
4) S 2,4-DCAA	6.429f	0.000	1933047	0	1.271	N.D. #
Target Compounds						
3) T 4-Nitroph...	6.318	0.000	4316598	0	4.100	N.D. #
5) T DICAMBA	0.000	7.077f	0	3972171	N.D.	1.594
6) T MCPP	0.000	7.077f	0	3972171	N.D.	2.245
7) T MCPA	0.000	7.263f	0	3948180	N.D.	1.491
8) T DICHLORPROP	7.200f	7.665	6443868	933204	3.438	1.508 #
9) T 2,4-D	7.409	0.000	53321160	0	23.040	N.D. #
11) T 2,4,5-TP ...	8.217	0.000	1018639	0	<MDL	N.D. #
12) T 2,4,5-T	8.495	9.147f	1242223	3230278	<MDL	1.006 #
13) T 2,4-DB	9.009	0.000	6761910	0	2.882	N.D. #
15) T Picloram	9.908	10.902	64435960	9805906	3.758	2.302 #
16) T DCPA	10.343	10.902	845310	9805906	<MDL	2.624 #

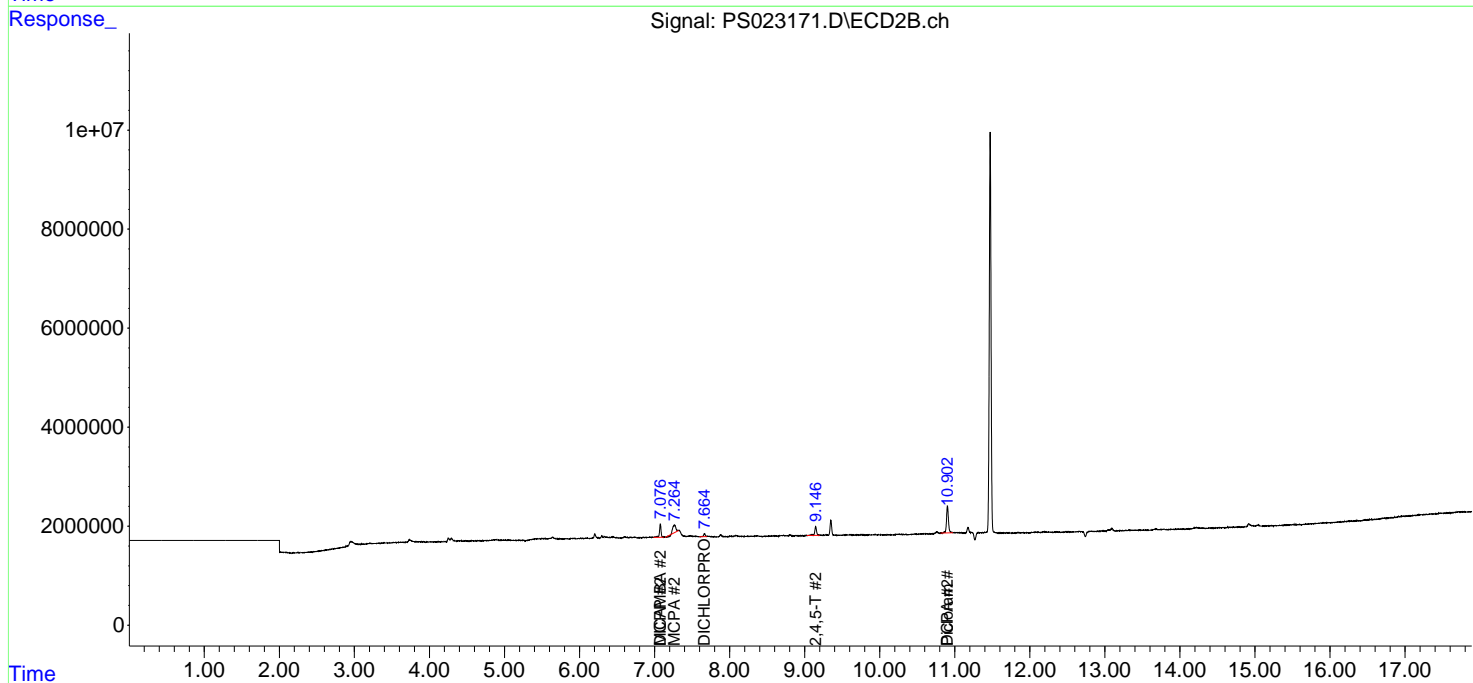
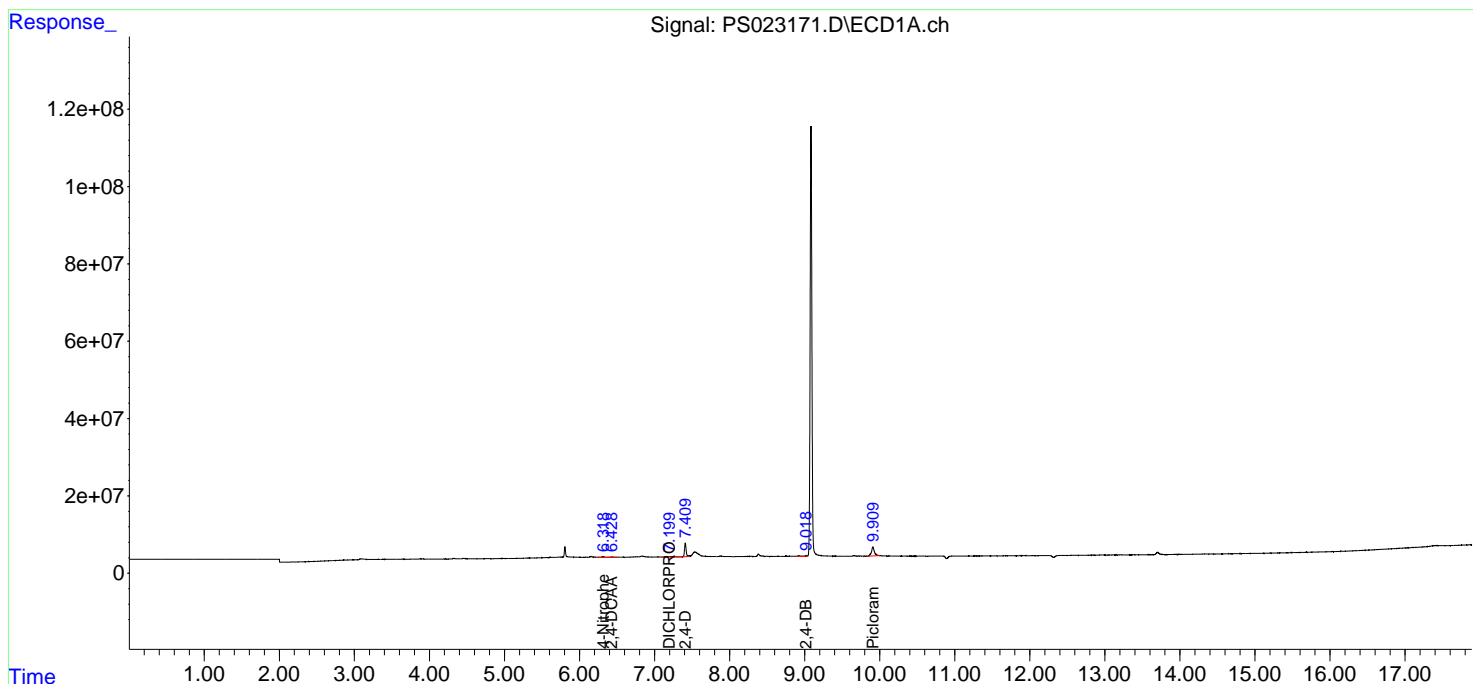
(f)=RT Delta > 1/2 Window (#)=Amounts differ by > 25% (m)=manual int.

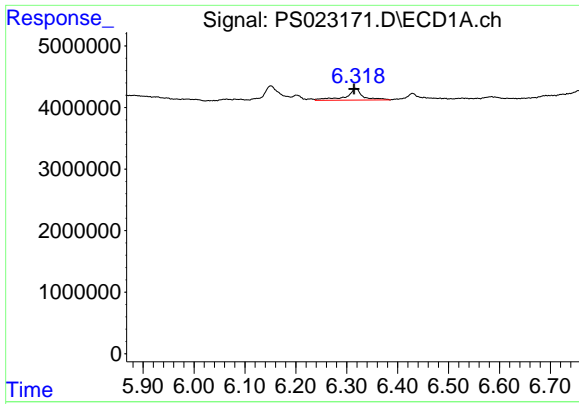
Data Path : Z:\pestpcbsrv\HPCHEM1\ECD\_S\Data\PS060123\  
Data File : PS023171.D  
Signal(s) : Signal #1: ECD1A.ch Signal #2: ECD2B.ch  
Acq On : 01 Jun 2023 09:43  
Operator : AR\AJ  
Sample : HEXANE  
Misc :  
ALS Vial : 1 Sample Multiplier: 1

Instrument :  
ECD\_S  
ClientSampleId :

Integration File signal 1: autoint1.e  
Integration File signal 2: autoint2.e  
Quant Time: Jun 02 03:44:58 2023  
Quant Method : Z:\pestpcbsrv\HPCHEM1\ECD\_S\Method\PS051023.M  
Quant Title : 8080.M  
QLast Update : Wed May 10 16:09:19 2023  
Response via : Initial Calibration  
Integrator: ChemStation

Volume Inj. : 2 µl  
Signal #1 Phase : Rtx-CLPesticides Signal #2 Phase: Rtx-CLPesticides2  
Signal #1 Info : 30M x 0.32mm x 0.5 Signal #2 Info : 30M x 0.32mm x 0.25µm

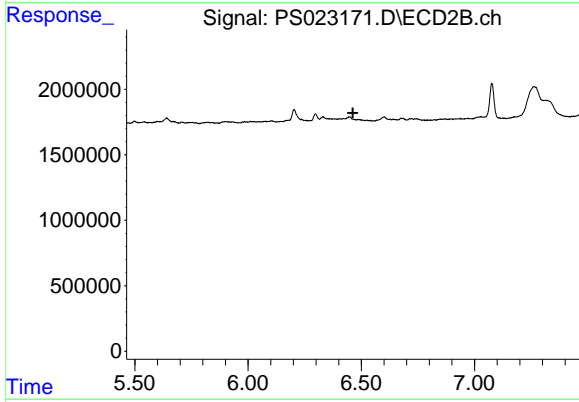




#3 4-Nitrophenol

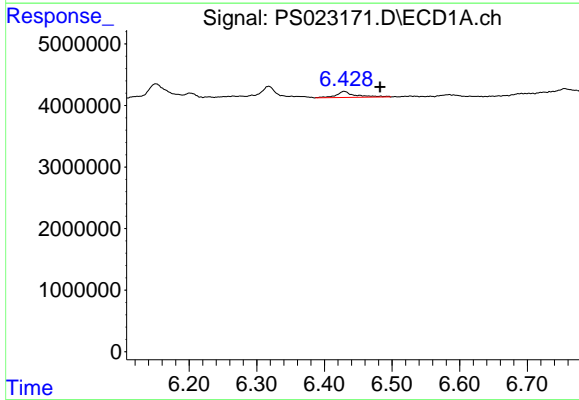
R.T.: 6.318 min  
 Delta R.T.: 0.003 min  
 Response: 4316598  
 Conc: 4.10 ng/ml

Instrument :  
 ECD\_S  
 ClientSampleId :



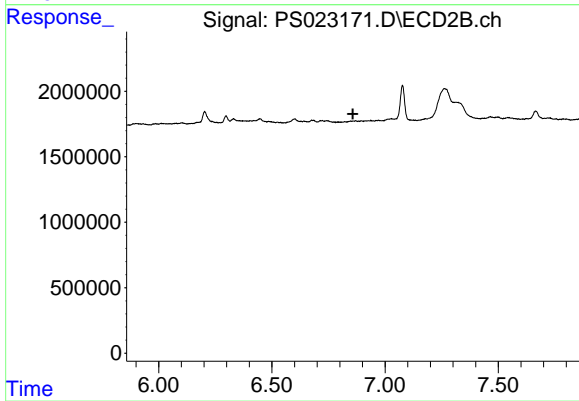
#3 4-Nitrophenol

R.T.: 0.000 min  
 Exp R.T. : 6.463 min  
 Response: 0  
 Conc: N.D.



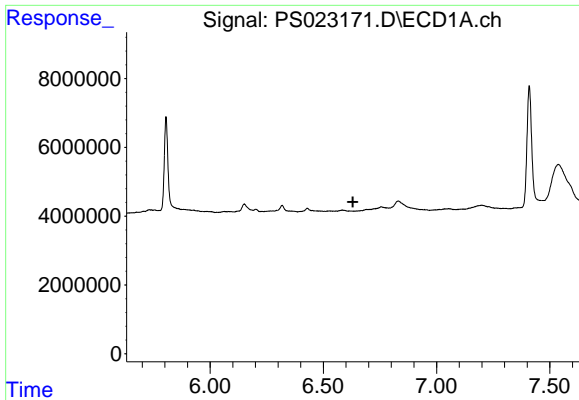
#4 2,4-DCAA

R.T.: 6.429 min  
 Delta R.T.: -0.053 min  
 Response: 1933047  
 Conc: 1.27 ng/ml



#4 2,4-DCAA

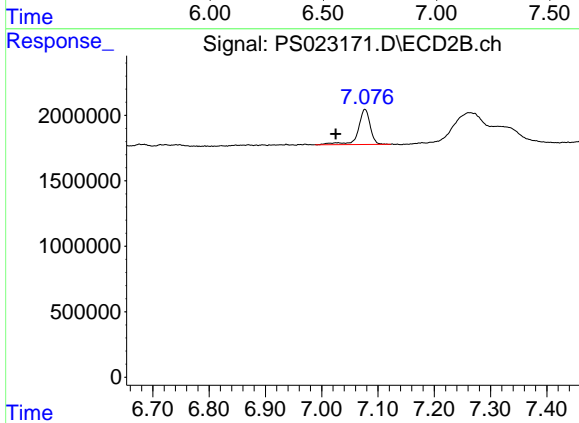
R.T.: 0.000 min  
 Exp R.T. : 6.858 min  
 Response: 0  
 Conc: N.D.



#5 DICAMBA

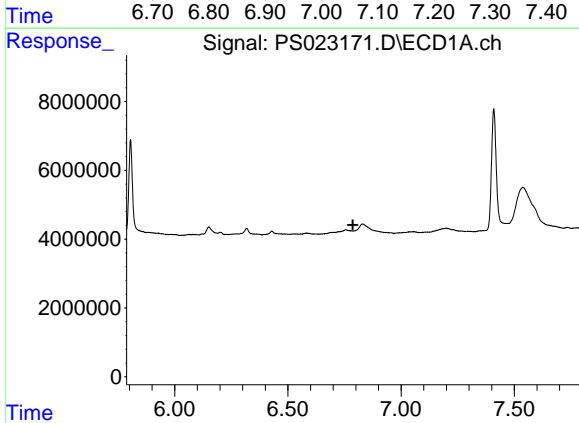
R.T.: 0.000 min  
 Exp R.T.: 6.631 min  
 Response: 0  
 Conc: N.D.

Instrument :  
 ECD\_S  
 ClientSampleId :



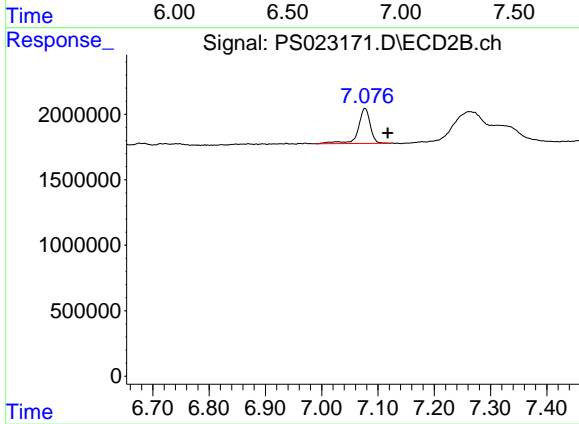
#5 DICAMBA

R.T.: 7.077 min  
 Delta R.T.: 0.052 min  
 Response: 3972171  
 Conc: 1.59 ng/ml



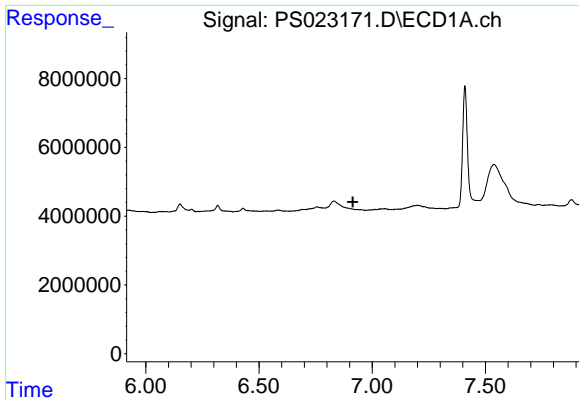
#6 MCPP

R.T.: 0.000 min  
 Exp R.T.: 6.787 min  
 Response: 0  
 Conc: N.D.



#6 MCPP

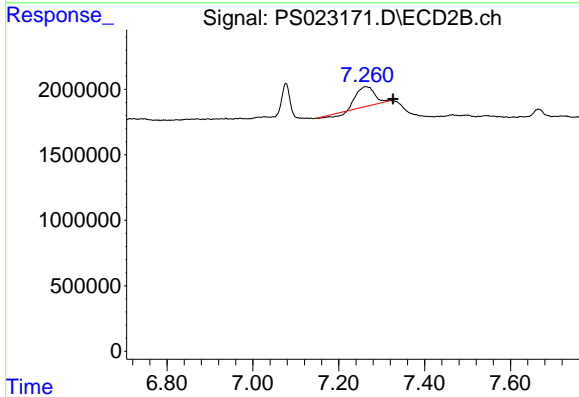
R.T.: 7.077 min  
 Delta R.T.: -0.040 min  
 Response: 3972171  
 Conc: 2.25 ug/ml



#7 MCPA

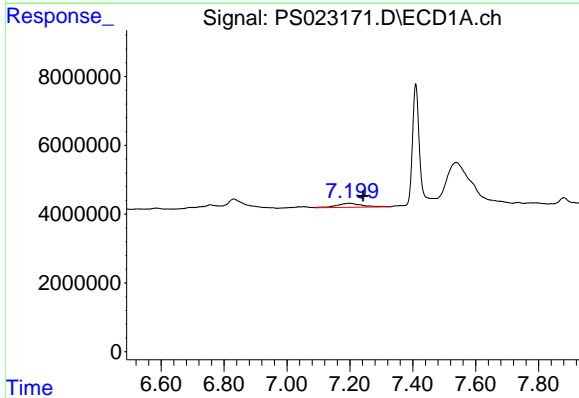
R.T.: 0.000 min  
 Exp R.T.: 6.915 min  
 Response: 0  
 Conc: N.D.

Instrument :  
 ECD\_S  
 ClientSampleId :



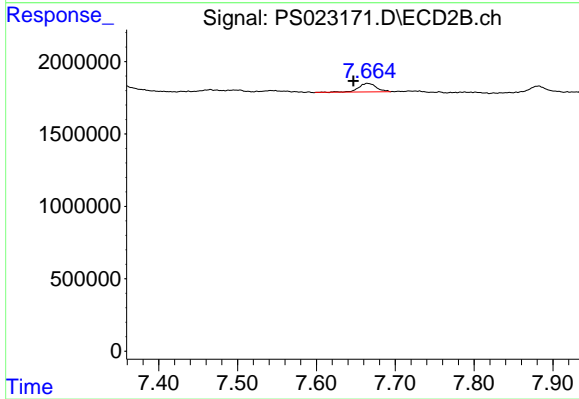
#7 MCPA

R.T.: 7.263 min  
 Delta R.T.: -0.063 min  
 Response: 3948180  
 Conc: 1.49 ug/ml



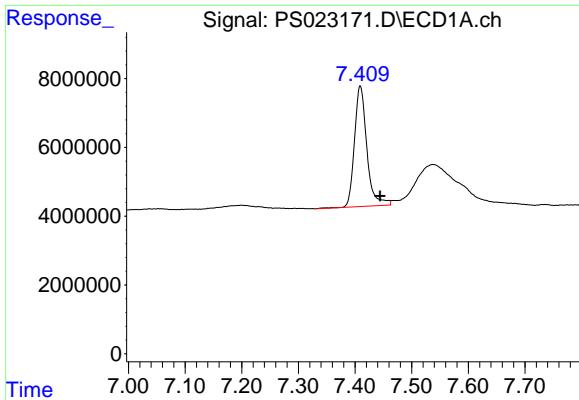
#8 DICHLORPROP

R.T.: 7.200 min  
 Delta R.T.: -0.042 min  
 Response: 6443868  
 Conc: 3.44 ng/ml



#8 DICHLORPROP

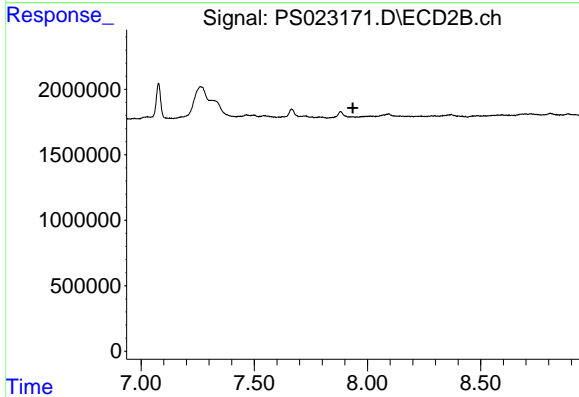
R.T.: 7.665 min  
 Delta R.T.: 0.018 min  
 Response: 933204  
 Conc: 1.51 ng/ml



#9 2,4-D

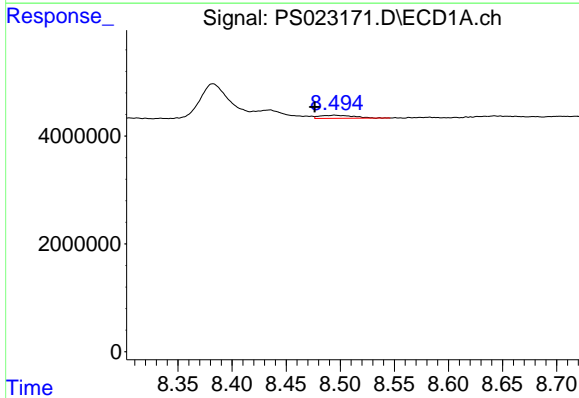
R.T.: 7.409 min  
 Delta R.T.: -0.035 min  
 Response: 53321160  
 Conc: 23.04 ng/ml

Instrument :  
 ECD\_S  
 ClientSampleId :



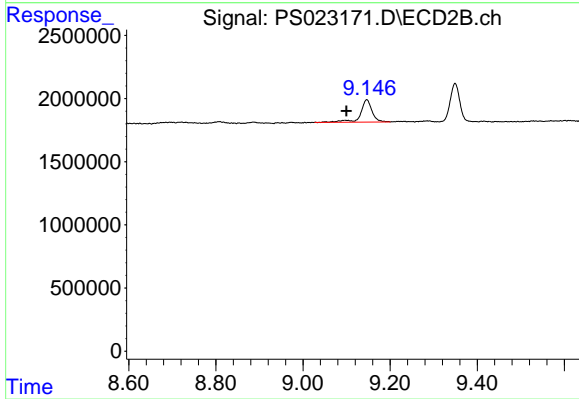
#9 2,4-D

R.T.: 0.000 min  
 Exp R.T. : 7.935 min  
 Response: 0  
 Conc: N.D.



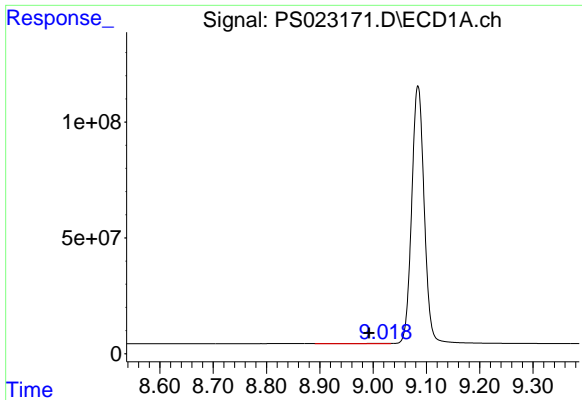
#12 2,4,5-T

R.T.: 8.495 min  
 Delta R.T.: 0.019 min  
 Response: 1242223  
 Conc: N.D.



#12 2,4,5-T

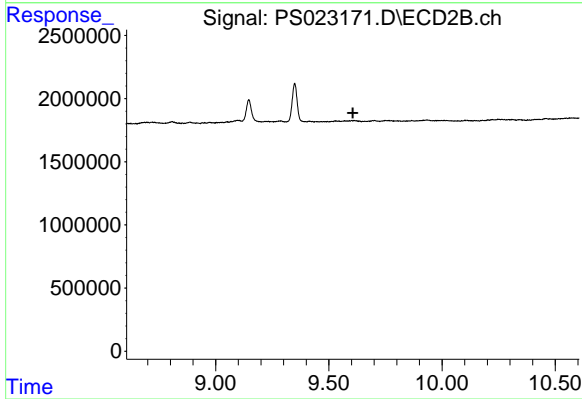
R.T.: 9.147 min  
 Delta R.T.: 0.047 min  
 Response: 3230278  
 Conc: 1.01 ng/ml



#13 2,4-DB

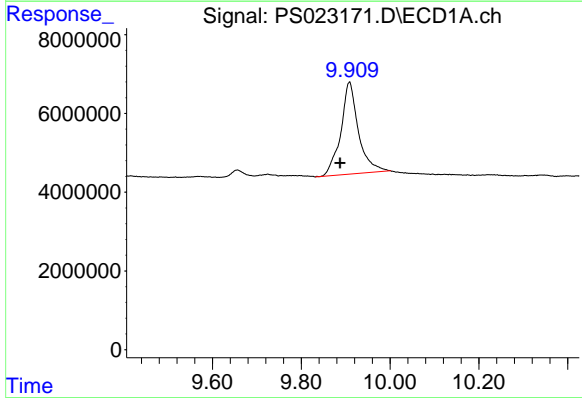
R.T.: 9.009 min  
 Delta R.T.: 0.017 min  
 Response: 6761910  
 Conc: 2.88 ng/ml

Instrument :  
 ECD\_S  
 ClientSampleId :



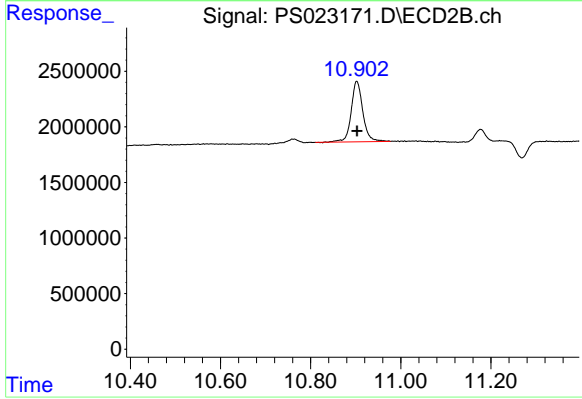
#13 2,4-DB

R.T.: 0.000 min  
 Exp R.T. : 9.606 min  
 Response: 0  
 Conc: N.D.



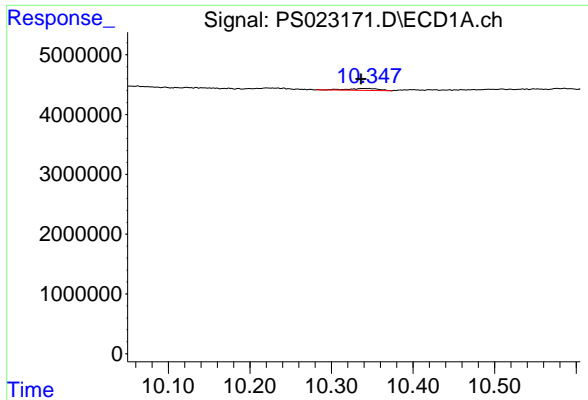
#15 Picloram

R.T.: 9.908 min  
 Delta R.T.: 0.021 min  
 Response: 64435960  
 Conc: 3.76 ng/ml



#15 Picloram

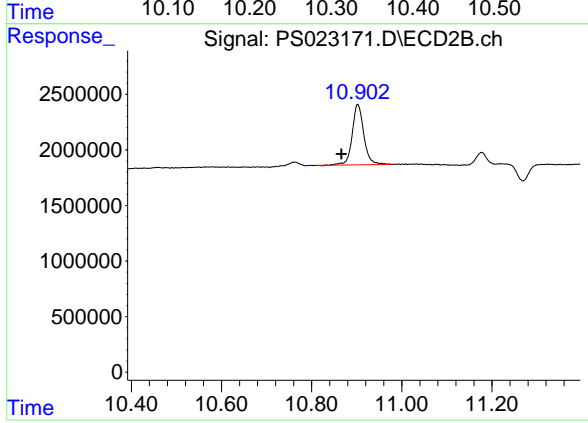
R.T.: 10.902 min  
 Delta R.T.: -0.001 min  
 Response: 9805906  
 Conc: 2.30 ng/ml



#16 DCPA

R.T.: 10.343 min  
 Delta R.T.: 0.006 min  
 Response: 845310  
 Conc: N.D.

Instrument :  
 ECD\_S  
 ClientSampleId :



#16 DCPA

R.T.: 10.902 min  
 Delta R.T.: 0.037 min  
 Response: 9805906  
 Conc: 2.62 ng/ml