

Data Path : Z:\pestpcbsrv\HPCHEM1\ECD_S\Data\PS060321\
 Data File : PS015179.D
 Signal(s) : Signal #1: ECD1A.ch Signal #2: ECD2B.ch
 Acq On : 03 Jun 2021 16:59
 Operator : DD\AJ
 Sample : PB136777BS
 Misc :
 ALS Vial : 12 Sample Multiplier: 1

Instrument :
 ECD_S
 ClientSampleId :
 PB136777BS

Integration File signal 1: autoint1.e
 Integration File signal 2: autoint2.e
 Quant Time: Jun 04 04:44:37 2021
 Quant Method : Z:\pestpcbsrv\HPCHEM1\ECD_S\Method\PS052821.M
 Quant Title : 8080.M
 QLast Update : Fri May 28 14:34:22 2021
 Response via : Initial Calibration
 Integrator: ChemStation

Volume Inj. : 2 µl
 Signal #1 Phase : Rtx-CLPesticides Signal #2 Phase: Rtx-CLPesticides2
 Signal #1 Info : 30M x 0.32mm x0.5 Signal #2 Info : 30M x 0.32mm x 0.25µm

	Compound	RT#1	RT#2	Resp#1	Resp#2	ng/ml	ng/ml

System Monitoring Compounds							
4) S	2,4-DCAA	7.227	6.784	1319.2E6	303.7E6	523.434	566.796
Target Compounds							
1) T	Dalapon	3.036	2.520	1108.2E6	360.1E6	421.637	550.156 #
2) T	3,5-DICHL...	6.438	5.970	1733.5E6	403.3E6	502.687	499.187
3) T	4-Nitroph...	7.053	6.401	619.7E6	155.7E6	439.596	489.314
5) T	DICAMBA	7.420	6.950	4539.8E6	1085.4E6	476.279	490.471
6) T	MCP P	7.590	7.046	381.8E6	87210105	53.052	49.352
7) T	MCPA	7.737	7.258	489.6E6	138.7E6	48.780	53.374
8) T	DICHLORPROP	8.115	7.572	1172.9E6	281.7E6	509.255	518.509
9) T	2,4-D	8.342	7.862	1416.6E6	387.1E6	555.955	600.990
10) T	Pentachlo...	8.657	8.295	17067.3E6	3987.0E6	527.244	541.625
11) T	2,4,5-TP ...	9.207	8.656	6808.8E6	1625.0E6	548.612	559.957
12) T	2,4,5-T	9.490	9.033	6101.7E6	1536.9E6	508.012	530.870
13) T	2,4-DB	10.044	9.540	849.8E6	199.7E6	333.693	517.585 #
14) T	DINOSEB	11.206	9.870	4535.3E6	1082.1E6	567.657	592.536
15) T	Picloram	11.019	10.847	6842.9E6	1763.7E6	413.047	424.686
16) T	DCPA	11.475	10.803	7319.7E6	2002.8E6	434.094	464.580

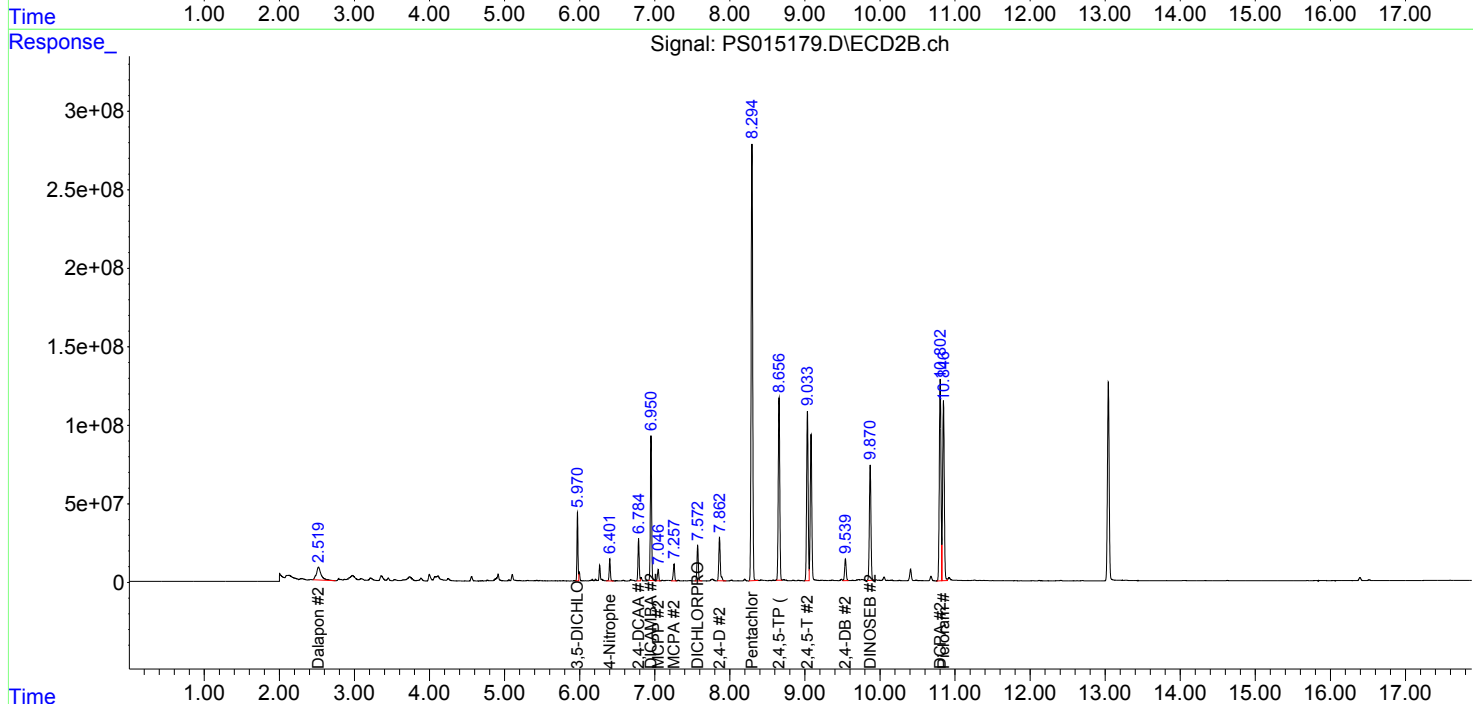
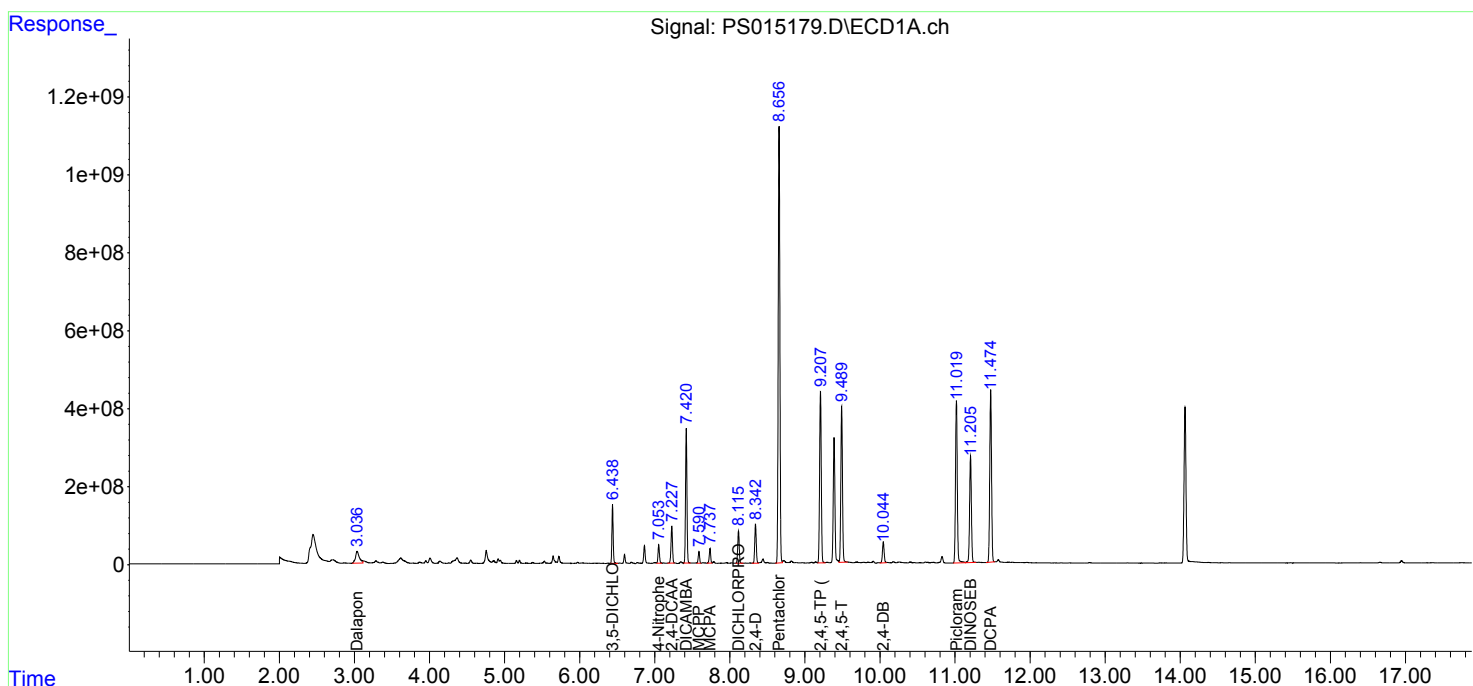
(f)=RT Delta > 1/2 Window (#)=Amounts differ by > 25% (m)=manual int.

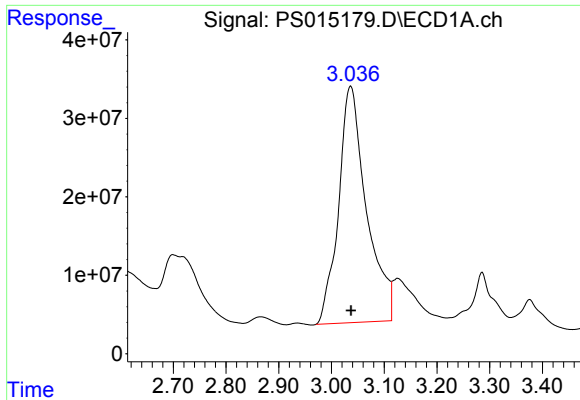
Data Path : Z:\pestpcbsrv\HPCHEM1\ECD_S\Data\PS060321\
 Data File : PS015179.D
 Signal(s) : Signal #1: ECD1A.ch Signal #2: ECD2B.ch
 Acq On : 03 Jun 2021 16:59
 Operator : DD\AJ
 Sample : PB136777BS
 Misc :
 ALS Vial : 12 Sample Multiplier: 1

Instrument :
 ECD_S
 ClientSampleId :
 PB136777BS

Integration File signal 1: autoint1.e
 Integration File signal 2: autoint2.e
 Quant Time: Jun 04 04:44:37 2021
 Quant Method : Z:\pestpcbsrv\HPCHEM1\ECD_S\Method\PS052821.M
 Quant Title : 8080.M
 QLast Update : Fri May 28 14:34:22 2021
 Response via : Initial Calibration
 Integrator: ChemStation

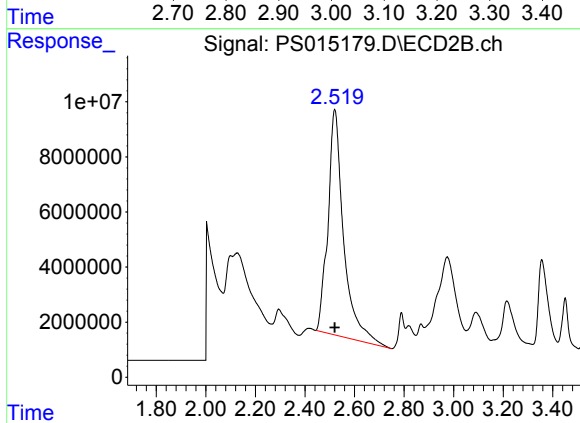
Volume Inj. : 2 µl
 Signal #1 Phase : Rtx-CLPesticides Signal #2 Phase: Rtx-CLPesticides2
 Signal #1 Info : 30M x 0.32mm x0.5 Signal #2 Info : 30M x 0.32mm x 0.25µm



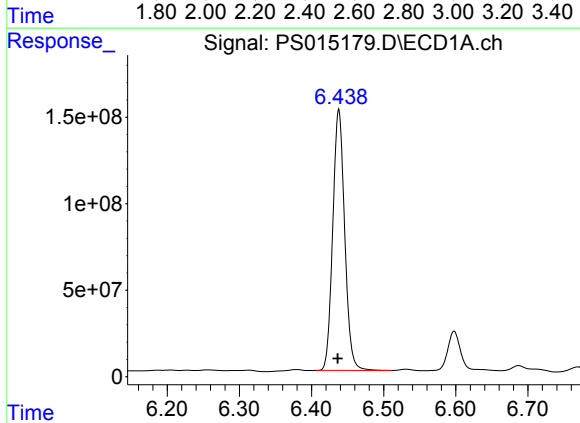


#1 Dalapon
 R.T.: 3.036 min
 Delta R.T.: 0.000 min
 Response: 1108220012
 Conc: 421.64 ng/ml

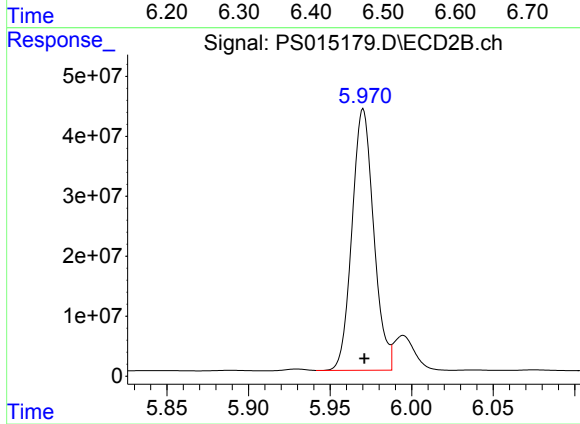
Instrument :
 ECD_S
 ClientSampleId :
 PB136777BS



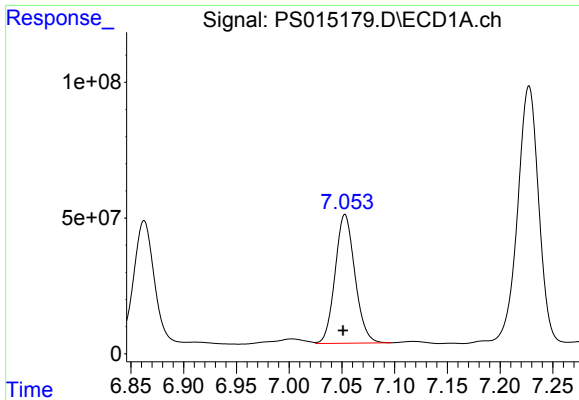
#1 Dalapon
 R.T.: 2.520 min
 Delta R.T.: 0.000 min
 Response: 360051158
 Conc: 550.16 ng/ml



#2 3,5-DICHLOROBENZOIC ACID
 R.T.: 6.438 min
 Delta R.T.: 0.001 min
 Response: 1733471924
 Conc: 502.69 ng/ml

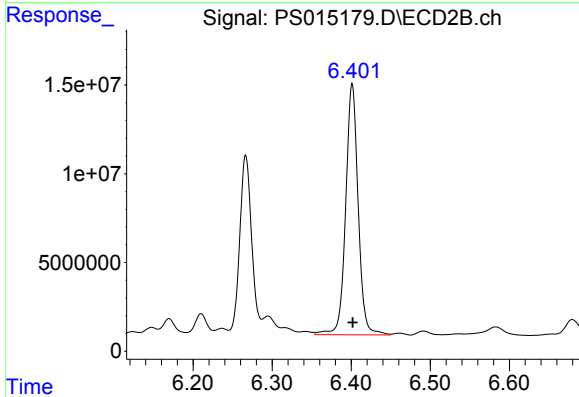


#2 3,5-DICHLOROBENZOIC ACID
 R.T.: 5.970 min
 Delta R.T.: 0.000 min
 Response: 403265734
 Conc: 499.19 ng/ml

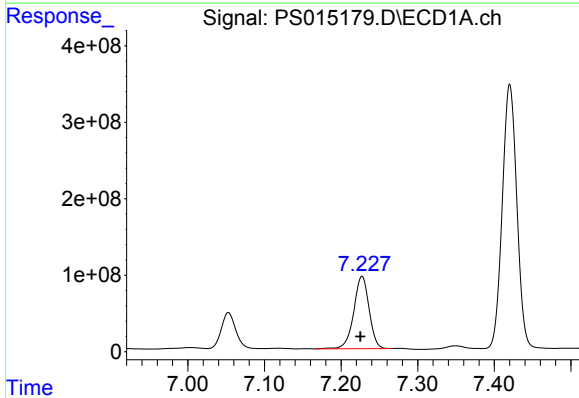


#3 4-Nitrophenol
 R.T.: 7.053 min
 Delta R.T.: 0.002 min
 Response: 619696995
 Conc: 439.60 ng/ml

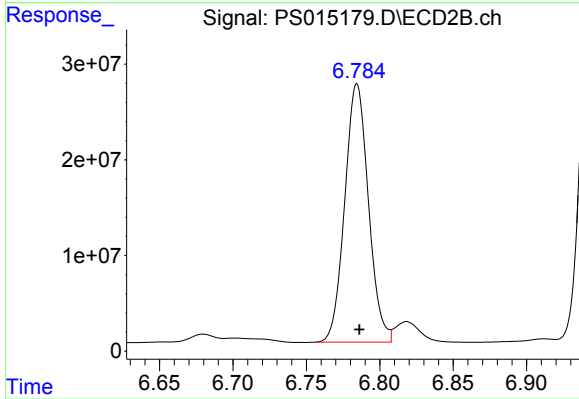
Instrument :
 ECD_S
 ClientSampleId :
 PB136777BS



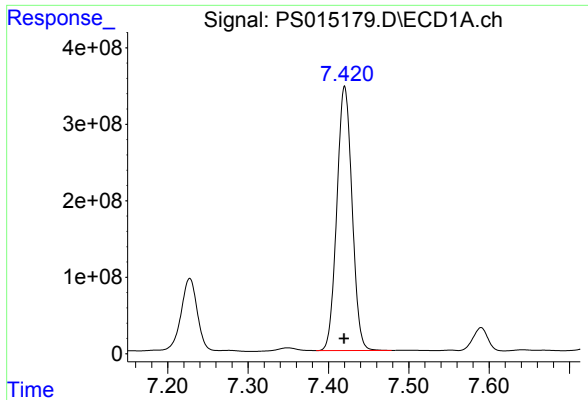
#3 4-Nitrophenol
 R.T.: 6.401 min
 Delta R.T.: 0.000 min
 Response: 155687017
 Conc: 489.31 ng/ml



#4 2,4-DCAA
 R.T.: 7.227 min
 Delta R.T.: 0.002 min
 Response: 1319249846
 Conc: 523.43 ng/ml

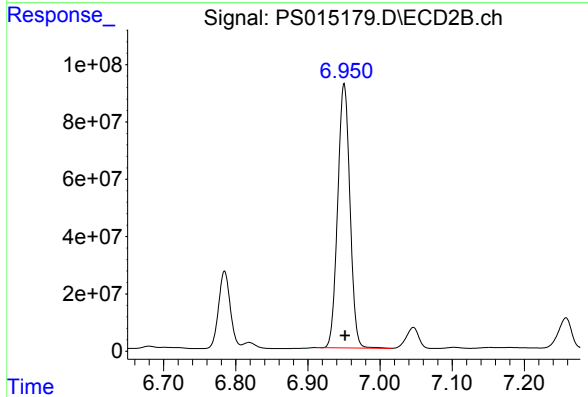


#4 2,4-DCAA
 R.T.: 6.784 min
 Delta R.T.: -0.002 min
 Response: 303672865
 Conc: 566.80 ng/ml

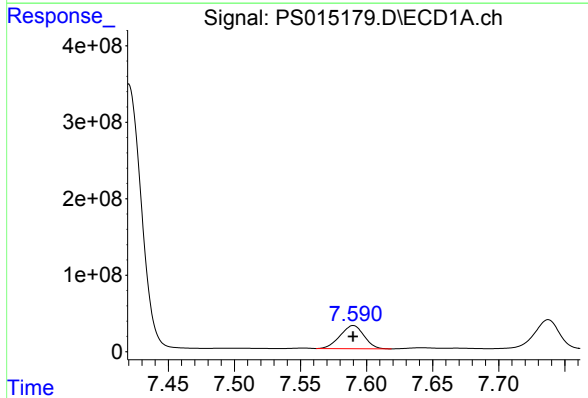


#5 DICAMBA
 R.T.: 7.420 min
 Delta R.T.: 0.000 min
 Response: 4539773470
 Conc: 476.28 ng/ml

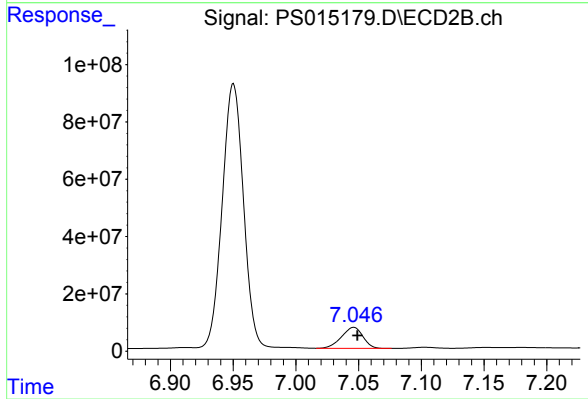
Instrument :
 ECD_S
 ClientSampleId :
 PB136777BS



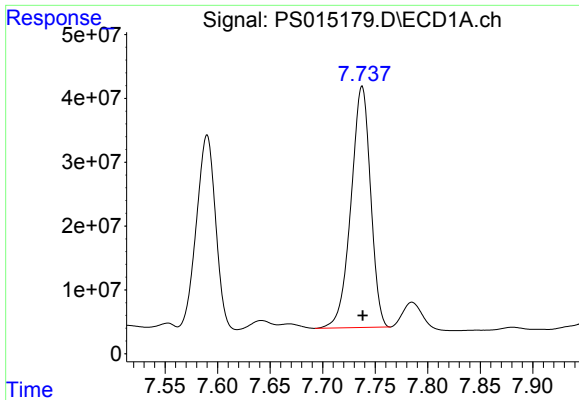
#5 DICAMBA
 R.T.: 6.950 min
 Delta R.T.: -0.002 min
 Response: 1085380432
 Conc: 490.47 ng/ml



#6 MCPP
 R.T.: 7.590 min
 Delta R.T.: 0.000 min
 Response: 381779005
 Conc: 53.05 ug/ml



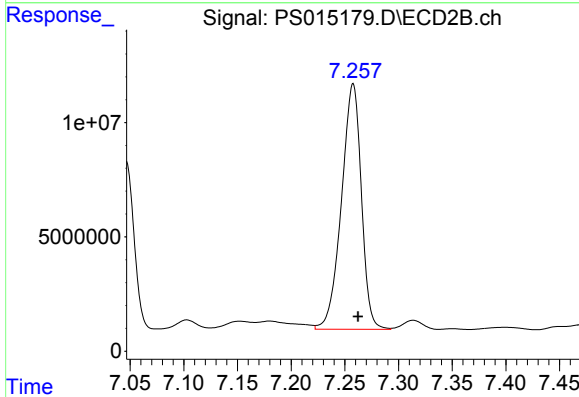
#6 MCPP
 R.T.: 7.046 min
 Delta R.T.: -0.003 min
 Response: 87210105
 Conc: 49.35 ug/ml



#7 MCPA

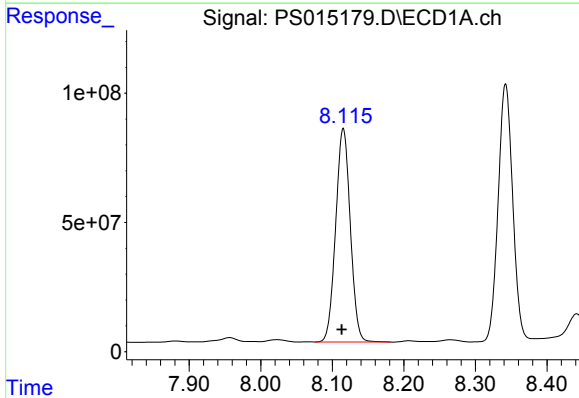
R.T.: 7.737 min
 Delta R.T.: 0.000 min
 Response: 489574325
 Conc: 48.78 ug/ml

Instrument :
 ECD_S
 ClientSampleId :
 PB136777BS



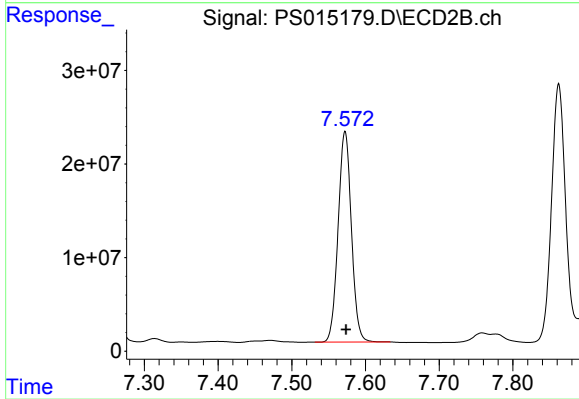
#7 MCPA

R.T.: 7.258 min
 Delta R.T.: -0.004 min
 Response: 138707303
 Conc: 53.37 ug/ml



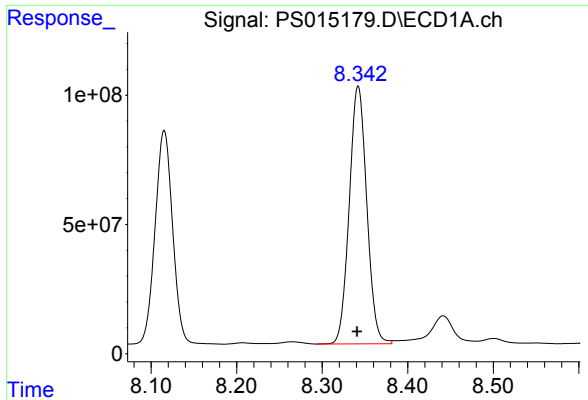
#8 DICHLORPROP

R.T.: 8.115 min
 Delta R.T.: 0.002 min
 Response: 1172865119
 Conc: 509.25 ng/ml



#8 DICHLORPROP

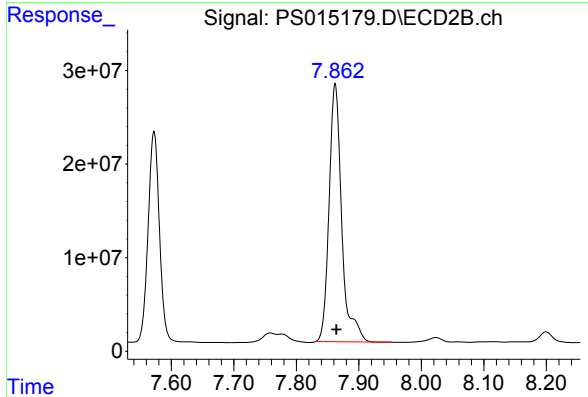
R.T.: 7.572 min
 Delta R.T.: -0.001 min
 Response: 281687237
 Conc: 518.51 ng/ml



#9 2,4-D

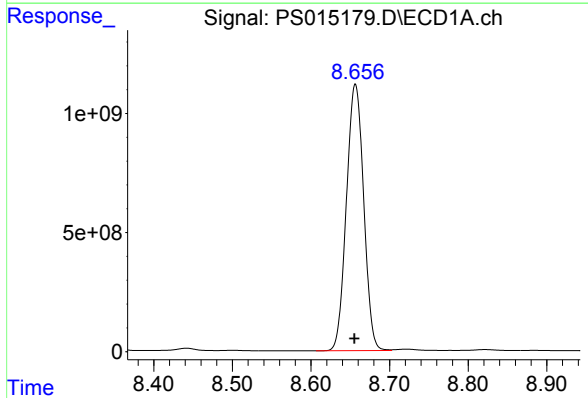
R.T.: 8.342 min
 Delta R.T.: 0.001 min
 Response: 1416638210
 Conc: 555.96 ng/ml

Instrument :
 ECD_S
 ClientSampleId :
 PB136777BS



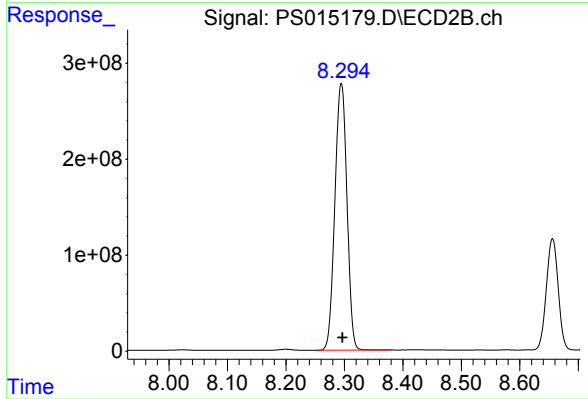
#9 2,4-D

R.T.: 7.862 min
 Delta R.T.: -0.002 min
 Response: 387052495
 Conc: 600.99 ng/ml



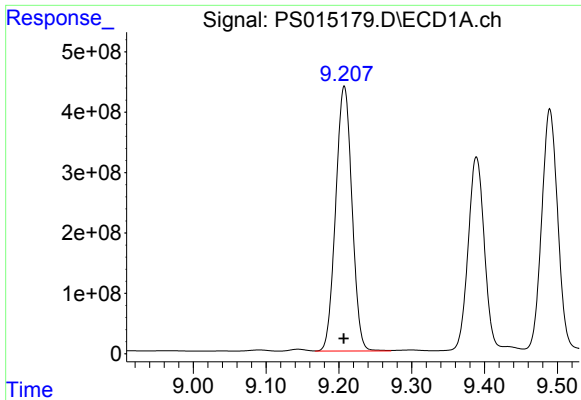
#10 Pentachlorophenol

R.T.: 8.657 min
 Delta R.T.: 0.001 min
 Response: 17067288690
 Conc: 527.24 ng/ml



#10 Pentachlorophenol

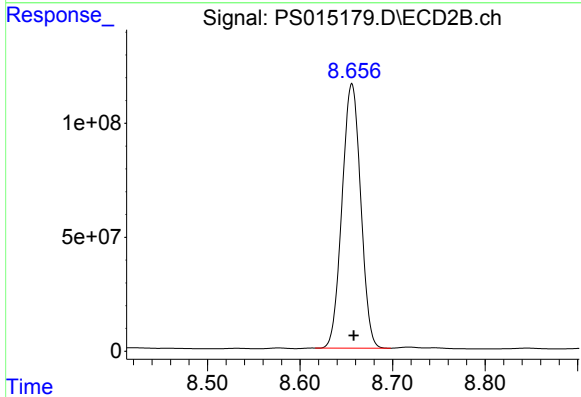
R.T.: 8.295 min
 Delta R.T.: -0.002 min
 Response: 3987003960
 Conc: 541.62 ng/ml



#11 2,4,5-TP (SILVEX)

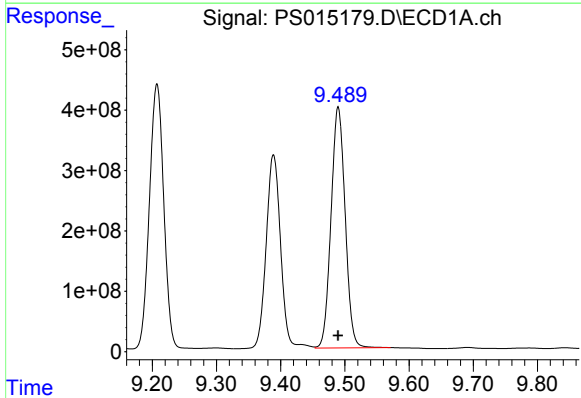
R.T.: 9.207 min
 Delta R.T.: 0.000 min
 Response: 6808822657
 Conc: 548.61 ng/ml

Instrument :
 ECD_S
 ClientSampleId :
 PB136777BS



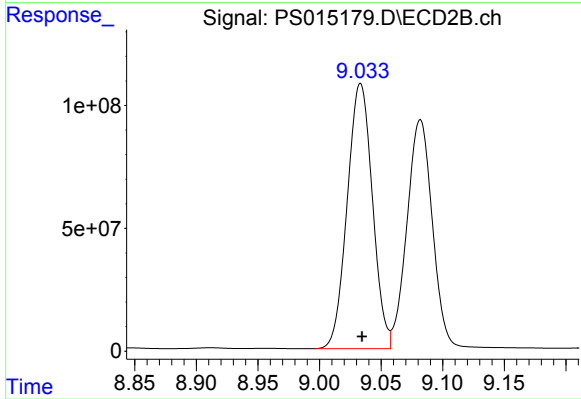
#11 2,4,5-TP (SILVEX)

R.T.: 8.656 min
 Delta R.T.: -0.002 min
 Response: 1624959842
 Conc: 559.96 ng/ml



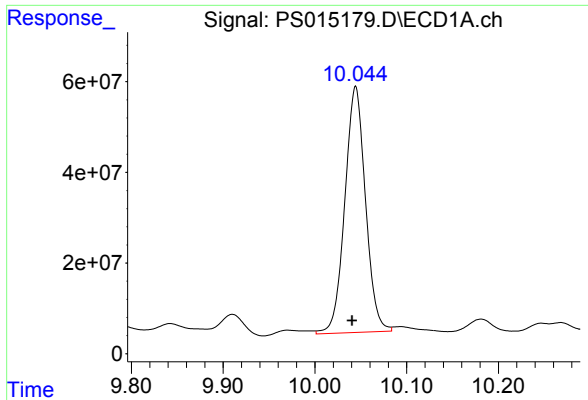
#12 2,4,5-T

R.T.: 9.490 min
 Delta R.T.: 0.000 min
 Response: 6101685789
 Conc: 508.01 ng/ml



#12 2,4,5-T

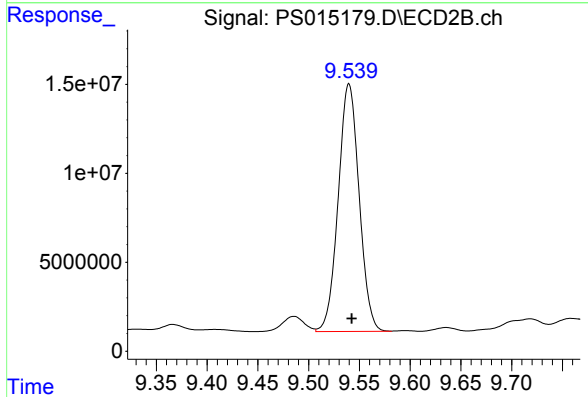
R.T.: 9.033 min
 Delta R.T.: -0.001 min
 Response: 1536868550
 Conc: 530.87 ng/ml



#13 2,4-DB

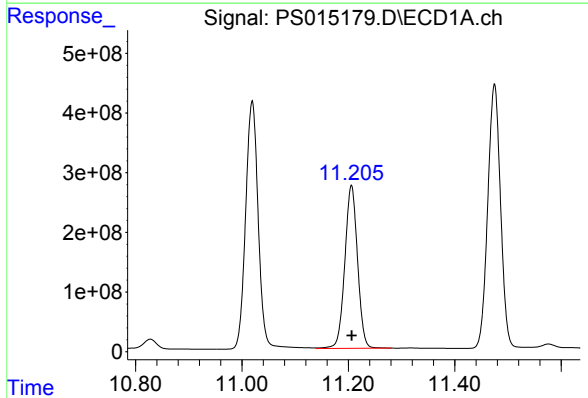
R.T.: 10.044 min
 Delta R.T.: 0.004 min
 Response: 849759073
 Conc: 333.69 ng/ml

Instrument :
 ECD_S
 ClientSampleId :
 PB136777BS



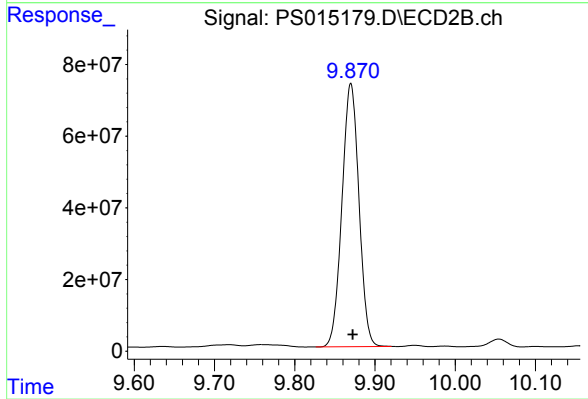
#13 2,4-DB

R.T.: 9.540 min
 Delta R.T.: -0.003 min
 Response: 199658063
 Conc: 517.59 ng/ml



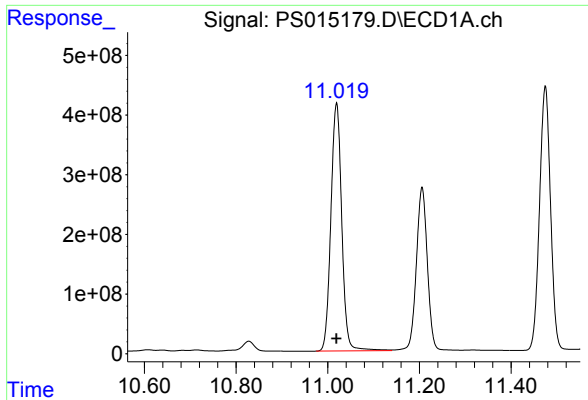
#14 DINOSEB

R.T.: 11.206 min
 Delta R.T.: 0.000 min
 Response: 4535338237
 Conc: 567.66 ng/ml



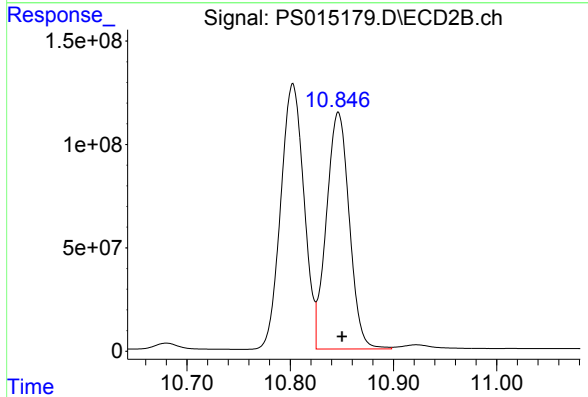
#14 DINOSEB

R.T.: 9.870 min
 Delta R.T.: -0.002 min
 Response: 1082054317
 Conc: 592.54 ng/ml

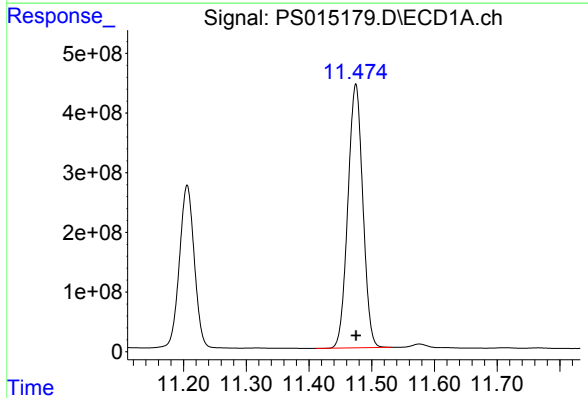


#15 Picloram
 R.T.: 11.019 min
 Delta R.T.: 0.000 min
 Response: 6842863859
 Conc: 413.05 ng/ml

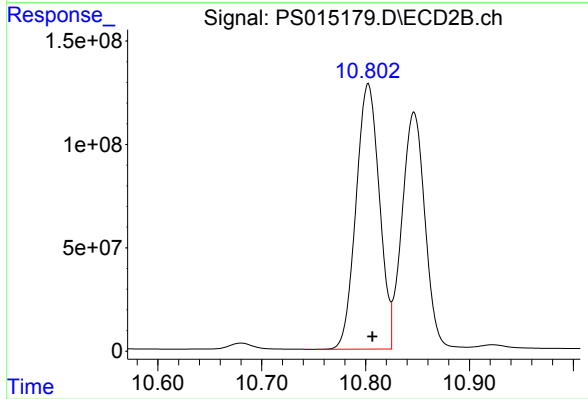
Instrument :
 ECD_S
 ClientSampleId :
 PB136777BS



#15 Picloram
 R.T.: 10.847 min
 Delta R.T.: -0.004 min
 Response: 1763676684
 Conc: 424.69 ng/ml



#16 DCPA
 R.T.: 11.475 min
 Delta R.T.: 0.000 min
 Response: 7319738130
 Conc: 434.09 ng/ml



#16 DCPA
 R.T.: 10.803 min
 Delta R.T.: -0.004 min
 Response: 2002803904
 Conc: 464.58 ng/ml