

Data Path : Y:\PESTPCBSRV\HPCHEM1\ECD\_S\Data\PS060418\  
 Data File : PS000201.D  
 Signal(s) : Signal #1: ECD1A.ch Signal #2: ECD2B.ch  
 Acq On : 04 Jun 2018 19:01  
 Operator : UA  
 Sample : J2133-01  
 Misc :  
 ALS Vial : 4 Sample Multiplier: 1

Instrument :  
 ECD\_S  
 ClientSampleId :

Integration File signal 1: autoint1.e  
 Integration File signal 2: autoint2.e  
 Quant Time: Jun 05 07:51:41 2018  
 Quant Method : Y:\PESTPCBSRV\HPCHEM1\ECD\_S\Method\PS052118.M  
 Quant Title : 8080.M  
 QLast Update : Thu May 31 04:46:50 2018  
 Response via : Initial Calibration  
 Integrator: ChemStation

Volume Inj. : 2 µl  
 Signal #1 Phase : Rtx-CLPesticides Signal #2 Phase: Rtx-CLPesticides2  
 Signal #1 Info : 30M x 0.32mm x0.5 Signal #2 Info : 30M x 0.32mm x 0.25µm

	Compound	RT#1	RT#2	Resp#1	Resp#2	ng/ml	ng/ml
-----							
System Monitoring Compounds							
4) S	2,4-DCAA	11.822	11.189	157.6E6	141.2E6	446.374	449.586
Target Compounds							
1) T	Dalapon	3.167	2.543	89018161	66987116	186.221	169.591
2) T	3,5-DICHL...	10.235	9.333	125.0E6	99531482	233.624	225.428
3) T	4-Nitroph...	11.419	10.336	51804751	47839288	222.405	256.878
5) T	DICAMBA	12.141	11.479	327.4E6	275.6E6	250.299	249.112
6) T	MCP P	12.476	11.697	16220955	18064412	14.530	19.518 #
7) T	MCPA	12.726	12.073	33593244	33860357	17.927	22.805 #
8) T	DICHLORPROP	13.334	12.602	92649627	77540907	268.519	268.389
9) T	2,4-D	13.692	13.073	116.7E6	106.3E6	258.774	276.575
10) T	Pentachlo...	14.090	13.638	1280.1E6	1090.2E6	256.121	247.468
11) T	2,4,5-TP ...	14.957	14.246	499.8E6	431.8E6	252.165	251.055
12) T	2,4,5-T	15.355	14.778	485.5E6	402.7E6	247.606	244.345
13) T	2,4-DB	16.109	15.465	70237225	57400459	258.321	270.595
14) T	DINOSEB	17.621	15.898	247.5E6	208.1E6	169.143	168.242
15) T	Picloram	17.377	17.143	612.2E6	493.9E6	234.062	231.809
16) T	DCPA	17.962	17.086	420.8E6	381.2E6	173.815	184.445
-----							

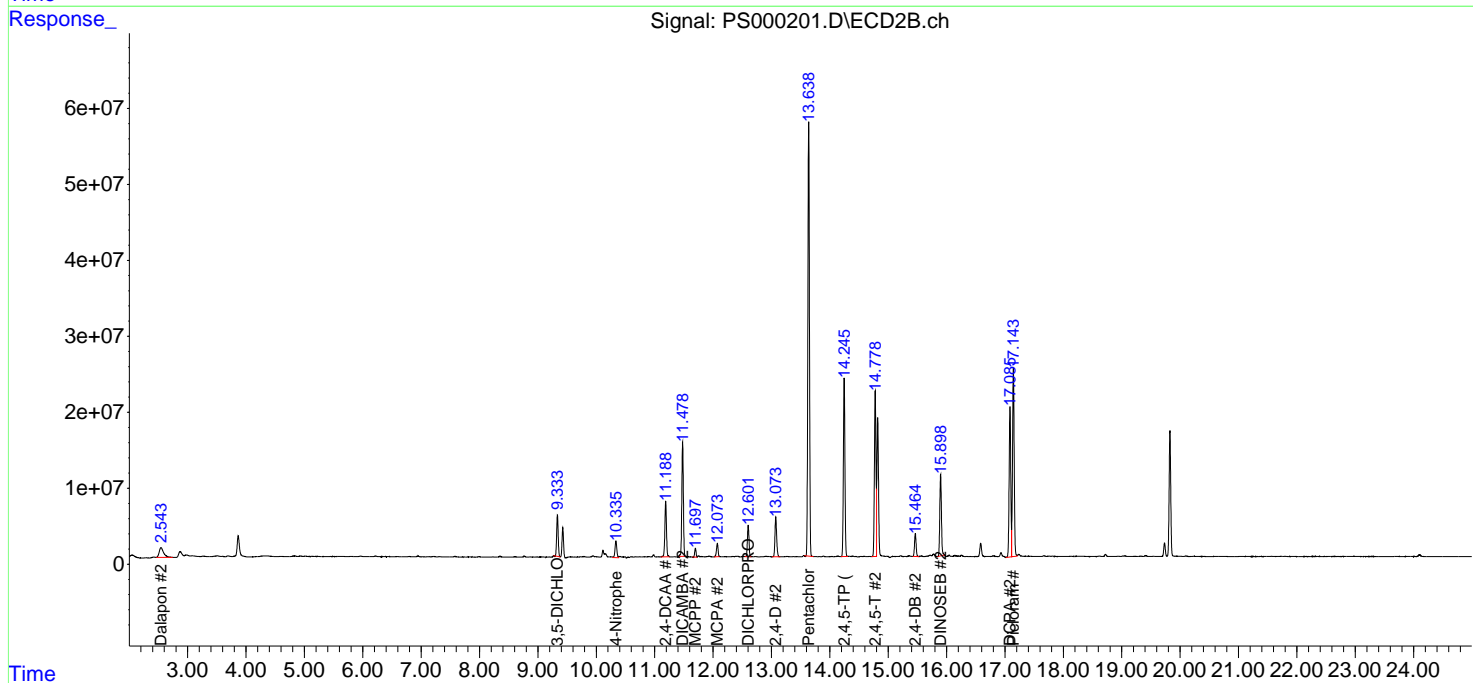
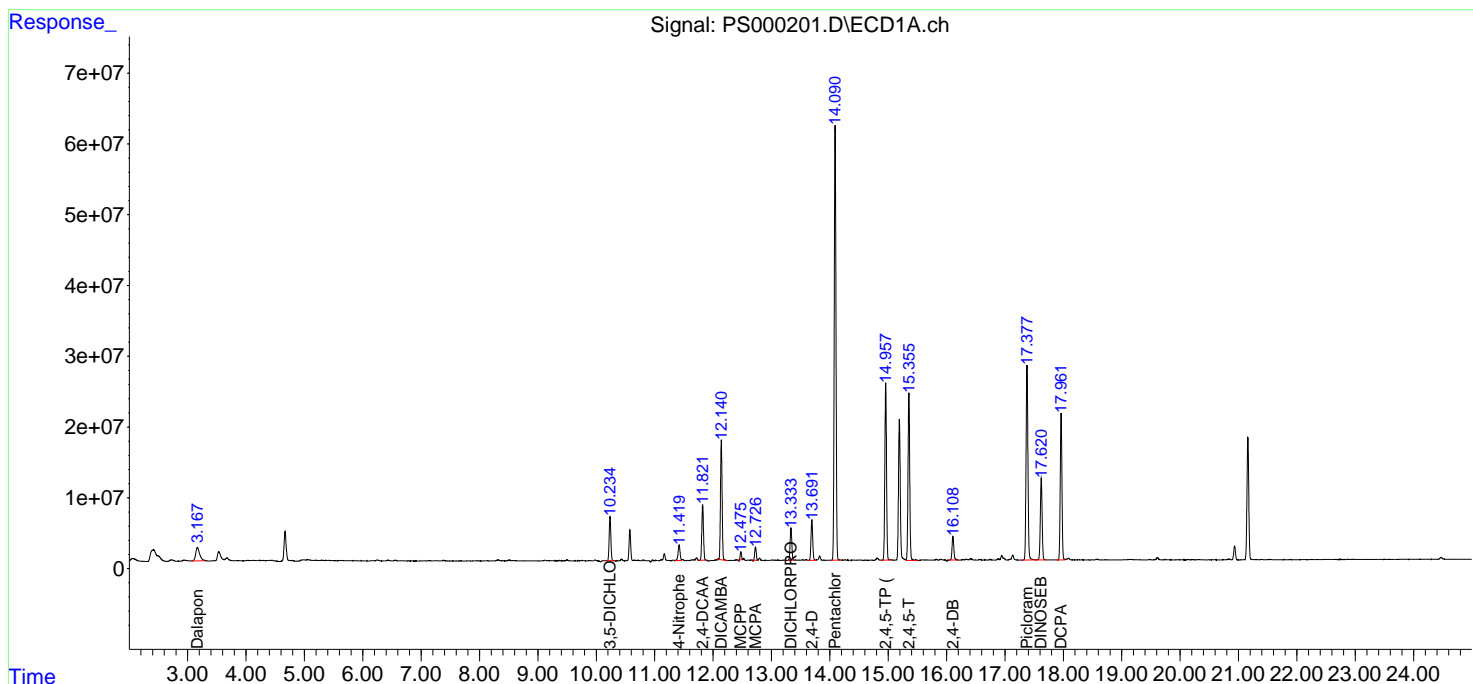
(f)=RT Delta > 1/2 Window (#)=Amounts differ by > 25% (m)=manual int.

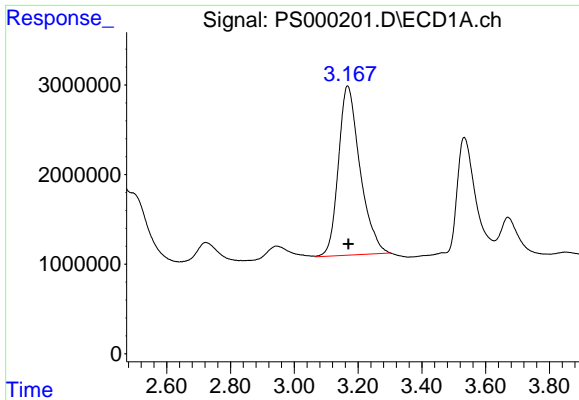
Data Path : Y:\PESTPCBSRV\HPCHEM1\ECD\_S\Data\PS060418\  
 Data File : PS000201.D  
 Signal(s) : Signal #1: ECD1A.ch Signal #2: ECD2B.ch  
 Acq On : 04 Jun 2018 19:01  
 Operator : UA  
 Sample : J2133-01  
 Misc :  
 ALS Vial : 4 Sample Multiplier: 1

Instrument :  
 ECD\_S  
 ClientSampled :

Integration File signal 1: autoint1.e  
 Integration File signal 2: autoint2.e  
 Quant Time: Jun 05 07:51:41 2018  
 Quant Method : Y:\PESTPCBSRV\HPCHEM1\ECD\_S\Method\PS052118.M  
 Quant Title : 8080.M  
 QLast Update : Thu May 31 04:46:50 2018  
 Response via : Initial Calibration  
 Integrator: ChemStation

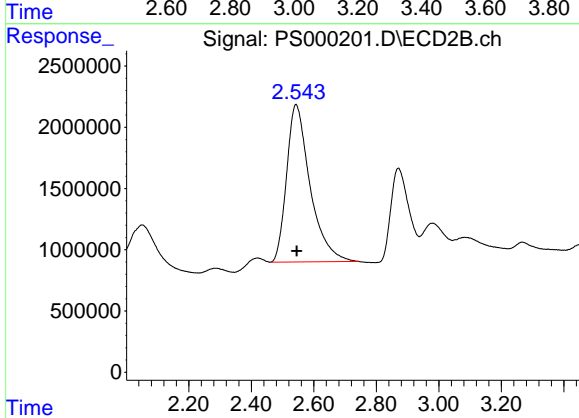
Volume Inj. : 2 µl  
 Signal #1 Phase : Rtx-CLPesticides Signal #2 Phase: Rtx-CLPesticides2  
 Signal #1 Info : 30M x 0.32mm x0.5 Signal #2 Info : 30M x 0.32mm x 0.25µm



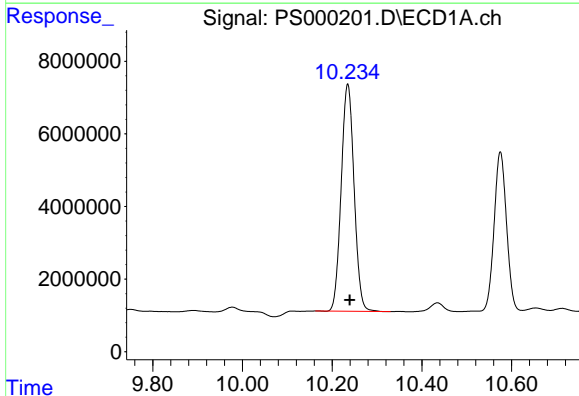


#1 Dalapon  
 R.T.: 3.167 min  
 Delta R.T.: -0.003 min  
 Response: 89018161  
 Conc: 186.22 ng/ml

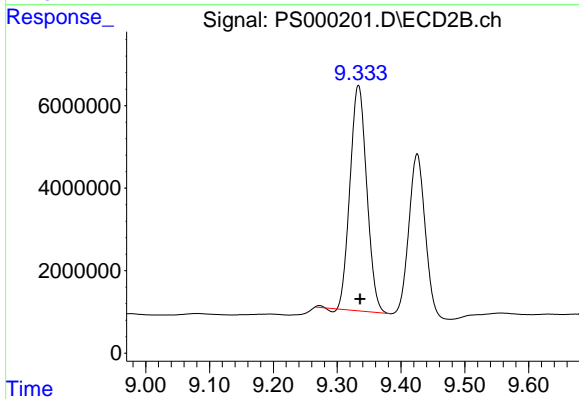
Instrument :  
 ECD\_S  
 ClientSampleId :



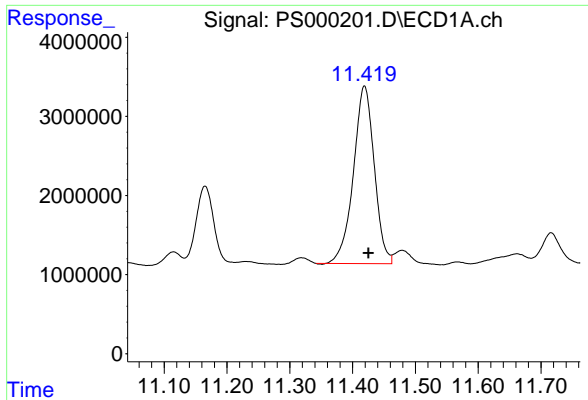
#1 Dalapon  
 R.T.: 2.543 min  
 Delta R.T.: -0.003 min  
 Response: 66987116  
 Conc: 169.59 ng/ml



#2 3,5-DICHLOROBENZOIC ACID  
 R.T.: 10.235 min  
 Delta R.T.: -0.005 min  
 Response: 124961251  
 Conc: 233.62 ng/ml

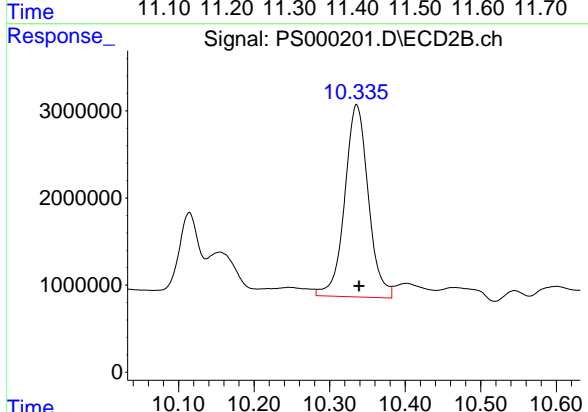


#2 3,5-DICHLOROBENZOIC ACID  
 R.T.: 9.333 min  
 Delta R.T.: -0.002 min  
 Response: 99531482  
 Conc: 225.43 ng/ml

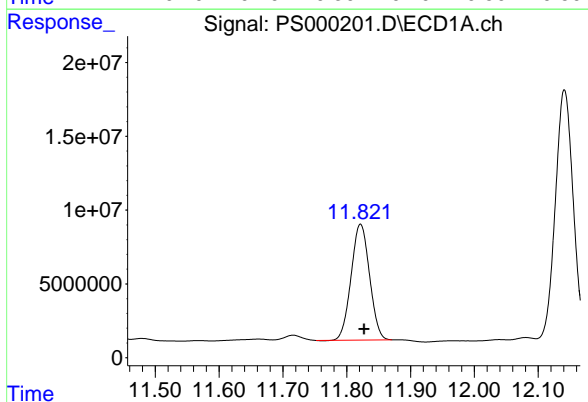


#3 4-Nitrophenol  
 R.T.: 11.419 min  
 Delta R.T.: -0.006 min  
 Response: 51804751  
 Conc: 222.40 ng/ml

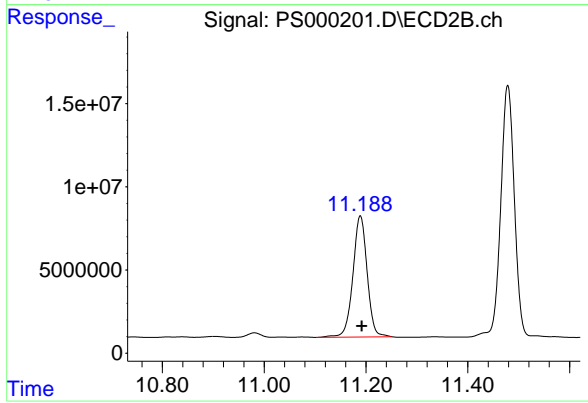
Instrument :  
 ECD\_S  
 ClientSampled :



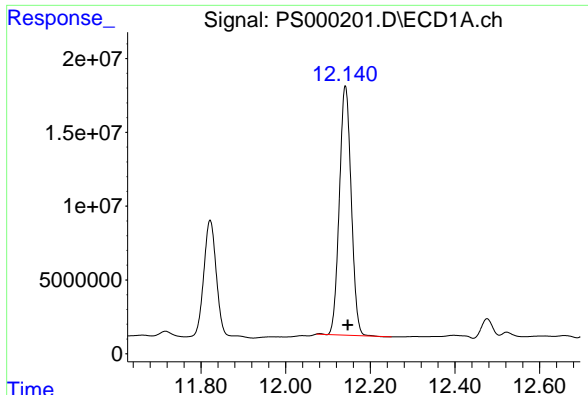
#3 4-Nitrophenol  
 R.T.: 10.336 min  
 Delta R.T.: -0.003 min  
 Response: 47839288  
 Conc: 256.88 ng/ml



#4 2,4-DCAA  
 R.T.: 11.822 min  
 Delta R.T.: -0.006 min  
 Response: 157604102  
 Conc: 446.37 ng/ml



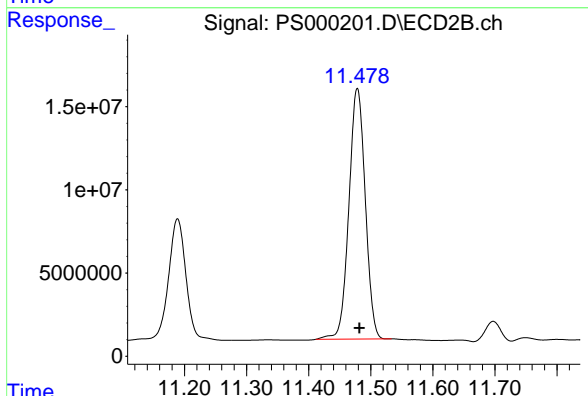
#4 2,4-DCAA  
 R.T.: 11.189 min  
 Delta R.T.: -0.003 min  
 Response: 141215933  
 Conc: 449.59 ng/ml



#5 DICAMBA

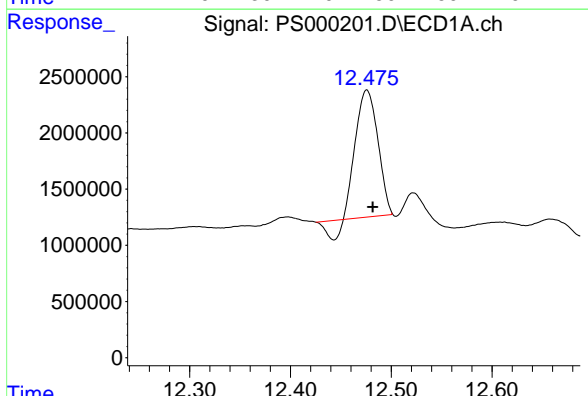
R.T.: 12.141 min  
 Delta R.T.: -0.006 min  
 Response: 327371384  
 Conc: 250.30 ng/ml

Instrument :  
 ECD\_S  
 ClientSampleId :



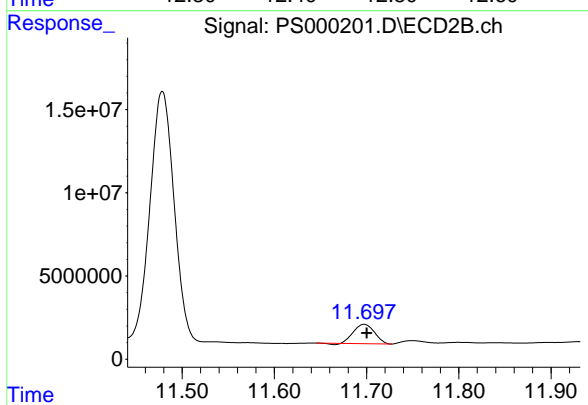
#5 DICAMBA

R.T.: 11.479 min  
 Delta R.T.: -0.003 min  
 Response: 275600305  
 Conc: 249.11 ng/ml



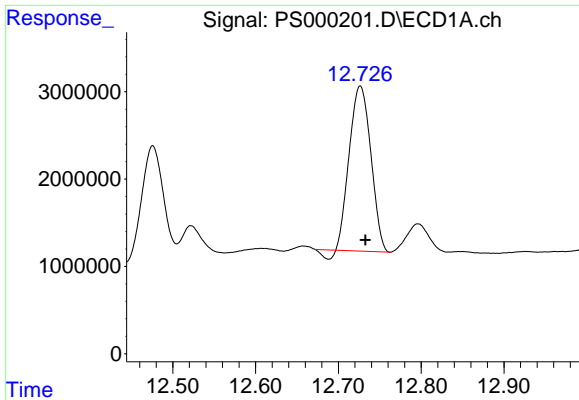
#6 MCPP

R.T.: 12.476 min  
 Delta R.T.: -0.006 min  
 Response: 16220955  
 Conc: 14.53 ug/ml



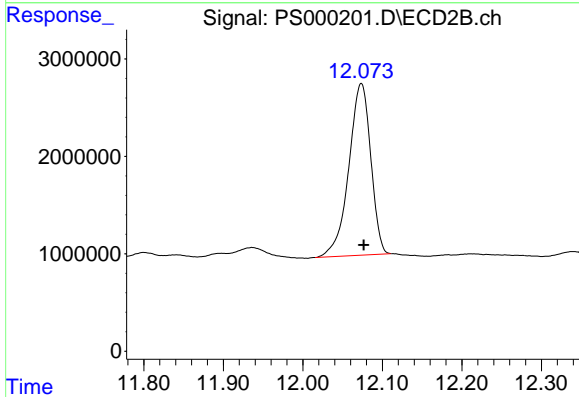
#6 MCPP

R.T.: 11.697 min  
 Delta R.T.: -0.003 min  
 Response: 18064412  
 Conc: 19.52 ug/ml

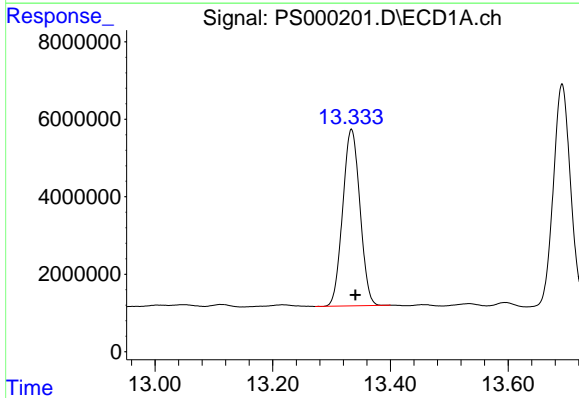


#7 MCPA  
R.T.: 12.726 min  
Delta R.T.: -0.006 min  
Response: 33593244  
Conc: 17.93 ug/ml

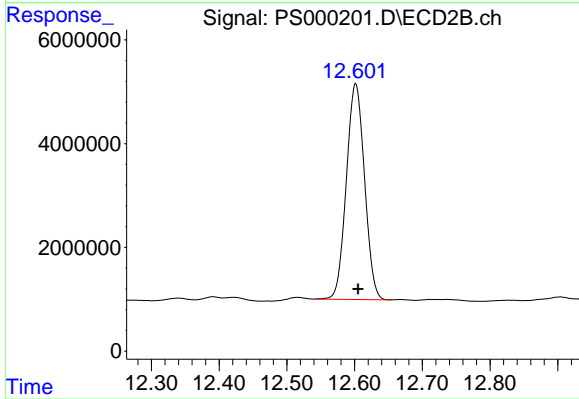
Instrument :  
ECD\_S  
ClientSampleId :



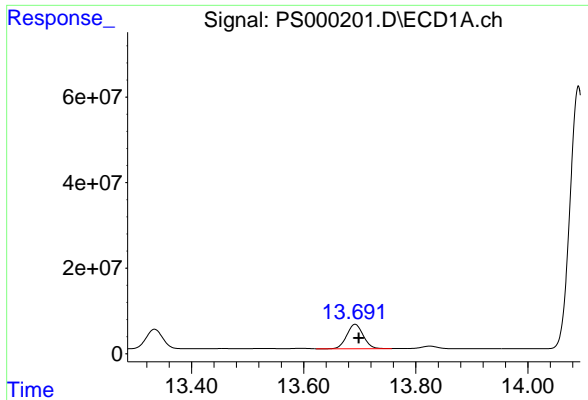
#7 MCPA  
R.T.: 12.073 min  
Delta R.T.: -0.003 min  
Response: 33860357  
Conc: 22.81 ug/ml



#8 DICHLORPROP  
R.T.: 13.334 min  
Delta R.T.: -0.007 min  
Response: 92649627  
Conc: 268.52 ng/ml

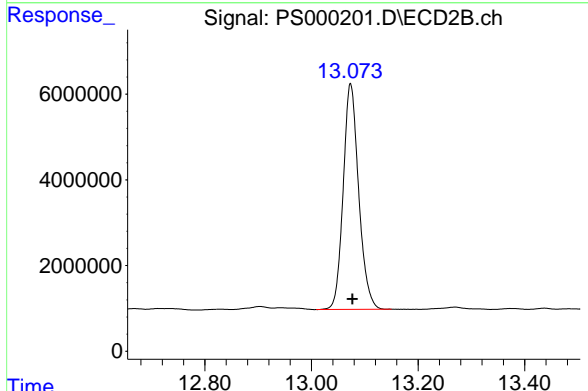


#8 DICHLORPROP  
R.T.: 12.602 min  
Delta R.T.: -0.003 min  
Response: 77540907  
Conc: 268.39 ng/ml

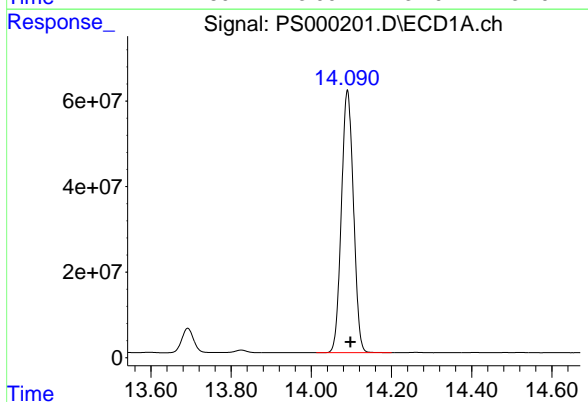


#9 2,4-D  
 R.T.: 13.692 min  
 Delta R.T.: -0.006 min  
 Response: 116705333  
 Conc: 258.77 ng/ml

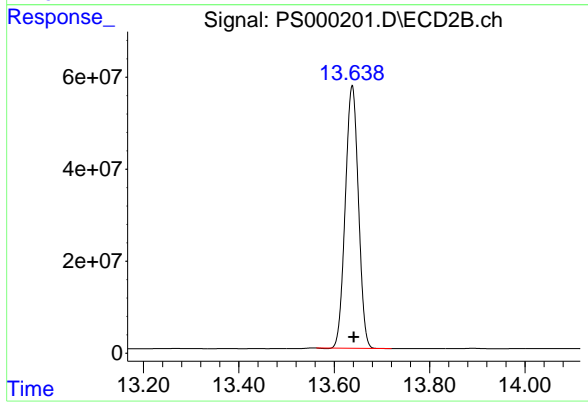
Instrument :  
 ECD\_S  
 ClientSampleId :



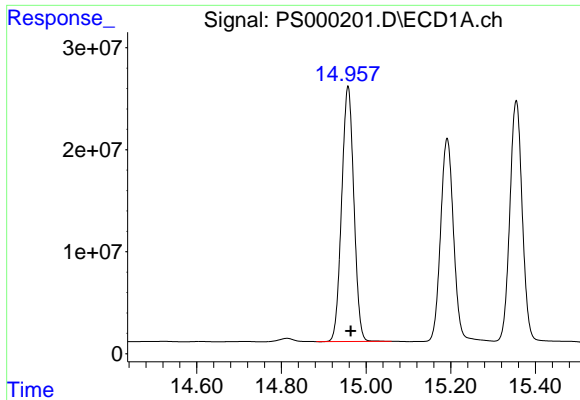
#9 2,4-D  
 R.T.: 13.073 min  
 Delta R.T.: -0.003 min  
 Response: 106325618  
 Conc: 276.57 ng/ml



#10 Pentachlorophenol  
 R.T.: 14.090 min  
 Delta R.T.: -0.008 min  
 Response: 1280121245  
 Conc: 256.12 ng/ml

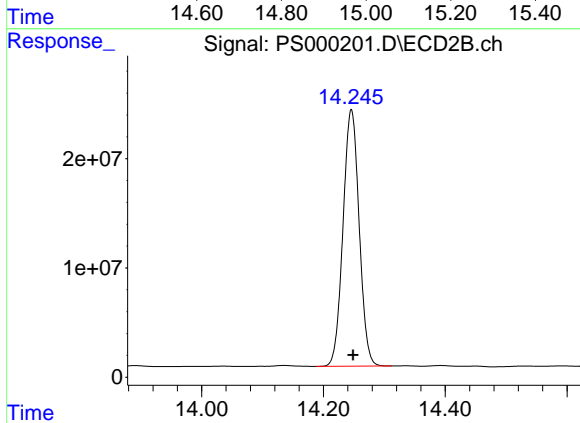


#10 Pentachlorophenol  
 R.T.: 13.638 min  
 Delta R.T.: -0.003 min  
 Response: 1090185167  
 Conc: 247.47 ng/ml

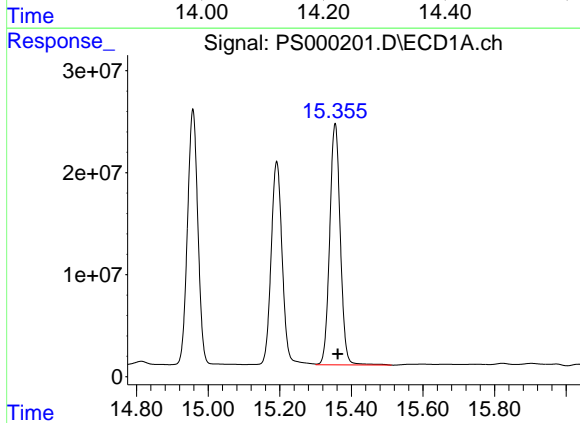


#11 2,4,5-TP (SILVEX)  
 R.T.: 14.957 min  
 Delta R.T.: -0.007 min  
 Response: 499823556  
 Conc: 252.16 ng/ml

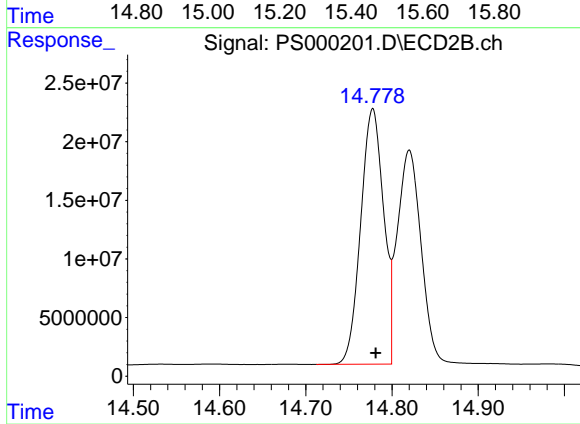
Instrument :  
 ECD\_S  
 ClientSampleId :



#11 2,4,5-TP (SILVEX)  
 R.T.: 14.246 min  
 Delta R.T.: -0.003 min  
 Response: 431831069  
 Conc: 251.06 ng/ml

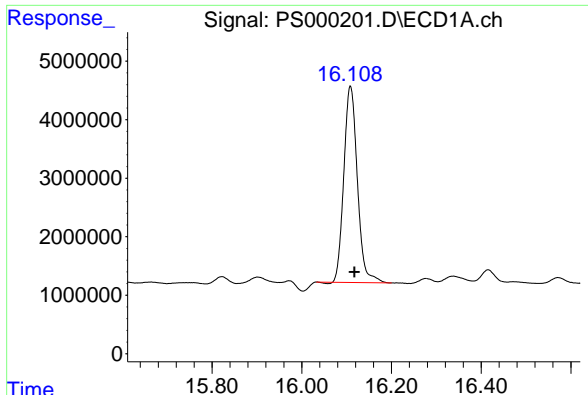


#12 2,4,5-T  
 R.T.: 15.355 min  
 Delta R.T.: -0.008 min  
 Response: 485506859  
 Conc: 247.61 ng/ml



#12 2,4,5-T  
 R.T.: 14.778 min  
 Delta R.T.: -0.004 min  
 Response: 402724937  
 Conc: 244.34 ng/ml

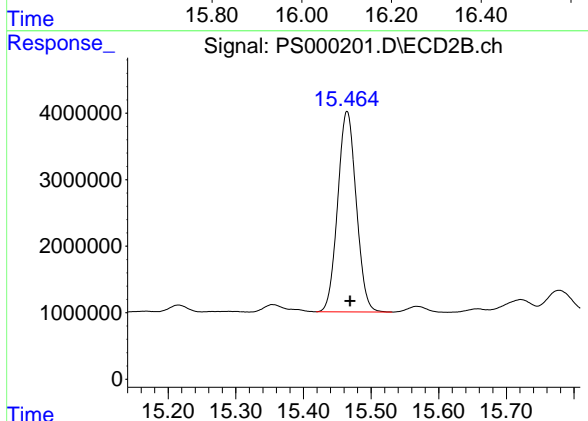




#13 2,4-DB

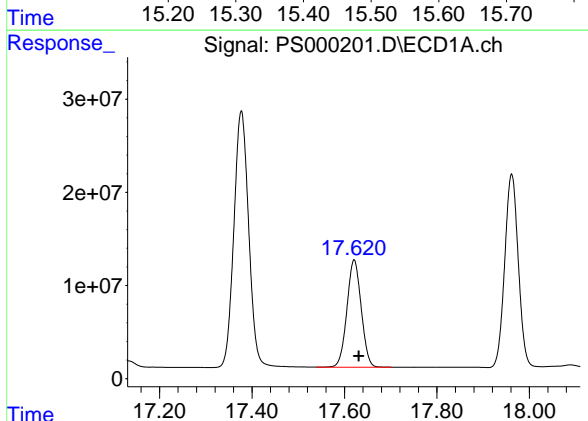
R.T.: 16.109 min  
Delta R.T.: -0.009 min  
Response: 70237225  
Conc: 258.32 ng/ml

Instrument :  
ECD\_S  
ClientSampled :



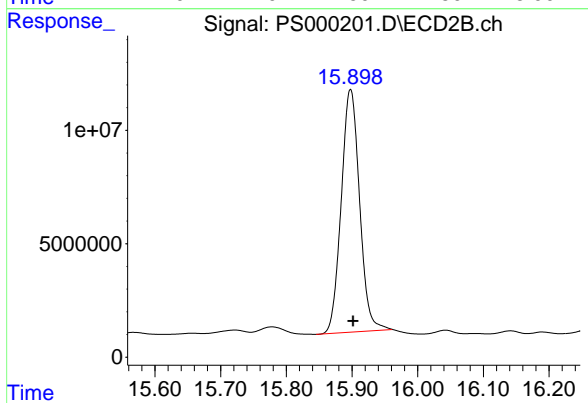
#13 2,4-DB

R.T.: 15.465 min  
Delta R.T.: -0.005 min  
Response: 57400459  
Conc: 270.59 ng/ml



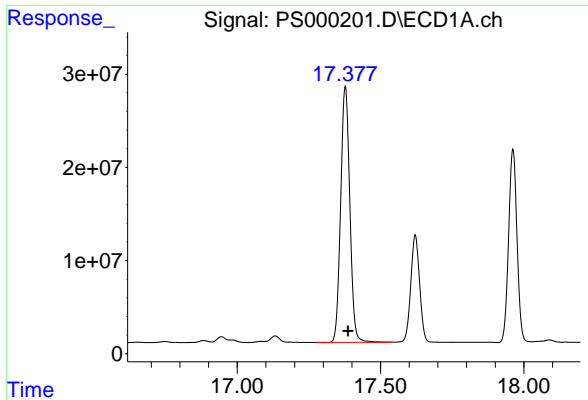
#14 DINOSEB

R.T.: 17.621 min  
Delta R.T.: -0.010 min  
Response: 247525430  
Conc: 169.14 ng/ml



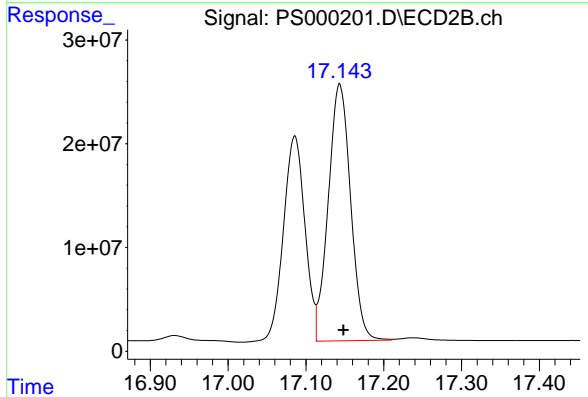
#14 DINOSEB

R.T.: 15.898 min  
Delta R.T.: -0.004 min  
Response: 208095125  
Conc: 168.24 ng/ml

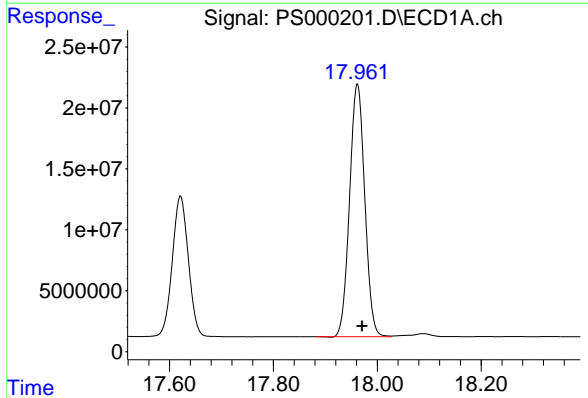


#15 Picloram  
 R.T.: 17.377 min  
 Delta R.T.: -0.010 min  
 Response: 612239787  
 Conc: 234.06 ng/ml

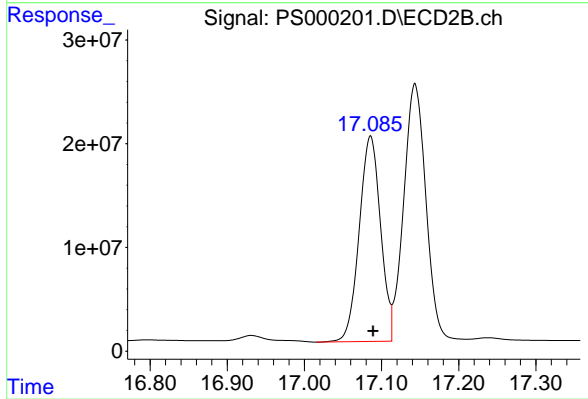
Instrument :  
 ECD\_S  
 ClientSampled :



#15 Picloram  
 R.T.: 17.143 min  
 Delta R.T.: -0.005 min  
 Response: 493881026  
 Conc: 231.81 ng/ml



#16 DCPA  
 R.T.: 17.962 min  
 Delta R.T.: -0.009 min  
 Response: 420833512  
 Conc: 173.81 ng/ml



#16 DCPA  
 R.T.: 17.086 min  
 Delta R.T.: -0.003 min  
 Response: 381175719  
 Conc: 184.45 ng/ml