

Data Path : Z:\pestpcbsrv\HPCHEM1\ECD\_S\Data\PS060419\  
 Data File : PS004916.D  
 Signal(s) : Signal #1: ECD1A.ch Signal #2: ECD2B.ch  
 Acq On : 04 Jun 2019 22:20  
 Operator : SM\AJ  
 Sample : K3111-01MS  
 Misc :  
 ALS Vial : 23 Sample Multiplier: 1

Instrument :  
 ECD\_S  
 ClientSampleId :  
 FK-BPM-01-D1-D2-D1A-D2AMS

Integration File signal 1: autoint1.e  
 Integration File signal 2: autoint2.e  
 Quant Time: Jun 05 01:38:06 2019  
 Quant Method : Z:\pestpcbsrv\HPCHEM1\ECD\_S\Method\PS052019.M  
 Quant Title : 8080.M  
 QLast Update : Tue May 21 04:53:35 2019  
 Response via : Initial Calibration  
 Integrator: ChemStation

Volume Inj. : 2 µl  
 Signal #1 Phase : Rtx-CLPesticides Signal #2 Phase: Rtx-CLPesticides2  
 Signal #1 Info : 30M x 0.32mm x0.5 Signal #2 Info : 30M x 0.32mm x 0.25µm

	Compound	RT#1	RT#2	Resp#1	Resp#2	ng/ml	ng/ml
-----							
System Monitoring Compounds							
4) S	2,4-DCAA	5.589	5.301	534.7E6	348.3E6	381.464	361.012
Target Compounds							
1) T	Dalapon	2.118	0.000	442.7E6	0	267.065	N.D. #
2) T	3,5-DICHL...	4.938	4.594	564.1E6	387.2E6	327.108	314.293
3) T	4-Nitroph...	5.436	4.976	152.0E6	138.3E6	243.809	291.853
5) T	DICAMBA	5.750	5.435	1575.8E6	1113.7E6	296.783	301.461
6) T	MCP P	5.907	5.521	117.9E6	79735787	28.314	29.101
7) T	MCPA	6.043	5.704	157.3E6	146.8E6	27.151	35.887 #
8) T	DICHLORPROP	6.390	5.991	369.4E6	277.1E6	282.289	293.951
9) T	2,4-D	6.605	6.263	464.8E6	380.7E6	339.804	352.254
10) T	Pentachlo...	6.878	6.641	5316.9E6	3775.9E6	302.773	307.358
11) T	2,4,5-TP ...	7.414	7.003	2185.3E6	1597.7E6	298.315	310.507
12) T	2,4,5-T	7.686	7.402	2234.8E6	962.5E6	300.070	215.961 #
13) T	2,4-DB	8.221	7.854	385.2E6	259.1E6	398.805	396.351
14) T	DINOSEB	9.323	8.168	247.0E6	163.8E6	41.766	42.598
15) T	Picloram	9.148	9.110	2993.2E6	2100.8E6	287.253	281.596
16) T	DCPA	9.593	9.070	1985.7E6	1138.4E6	222.959	175.731

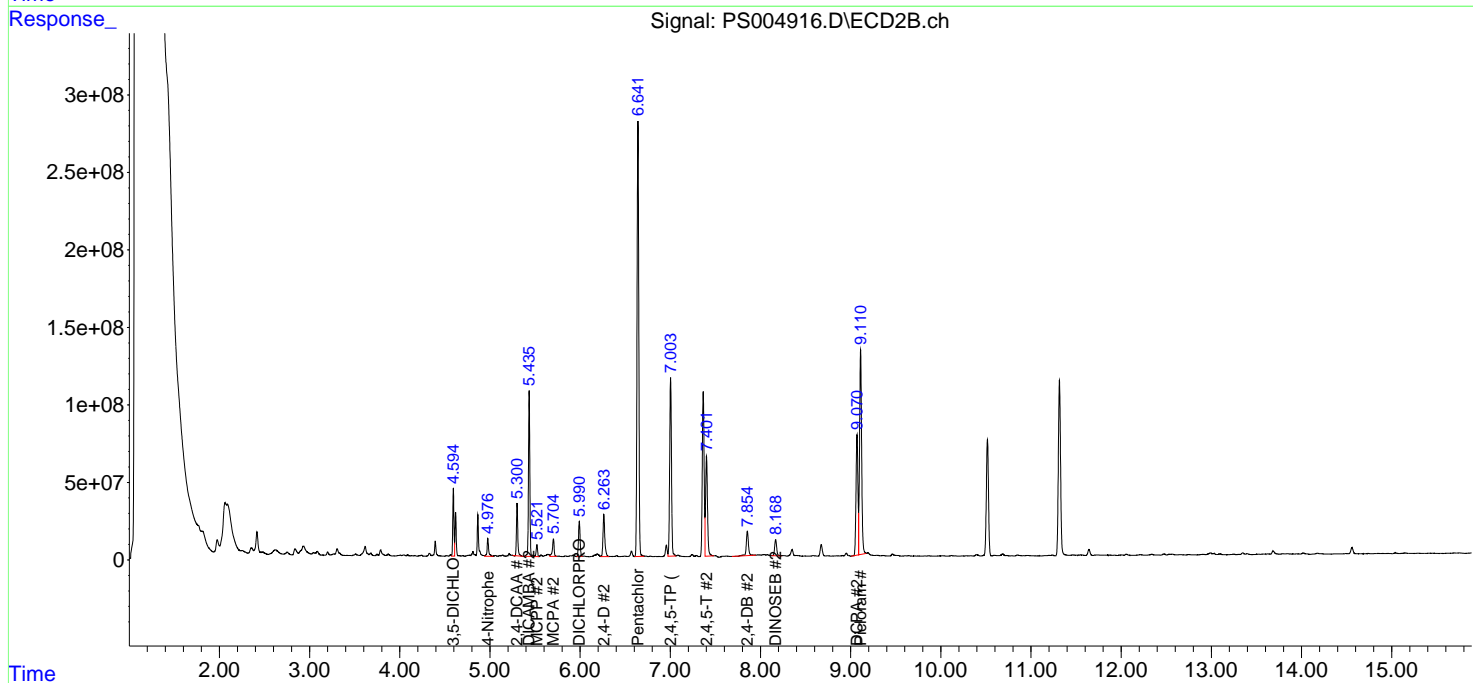
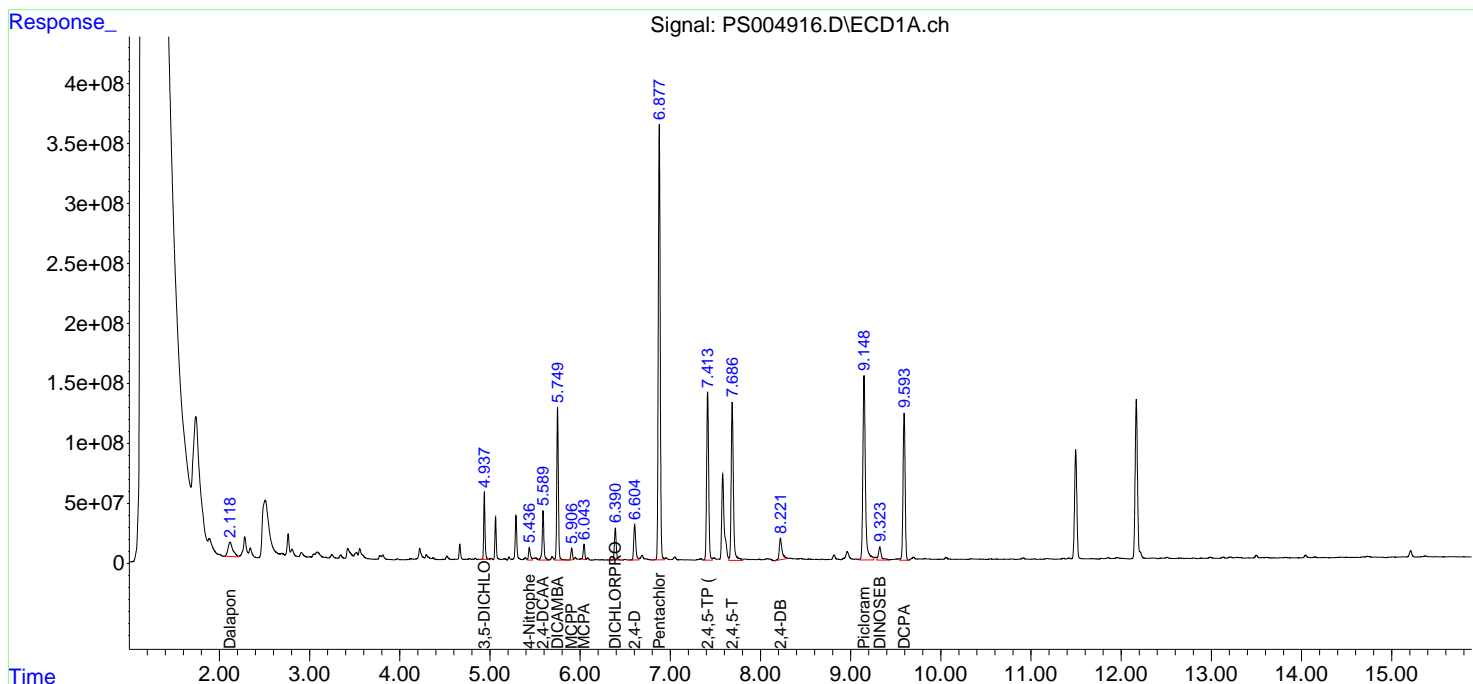
(f)=RT Delta > 1/2 Window (#)=Amounts differ by > 25% (m)=manual int.

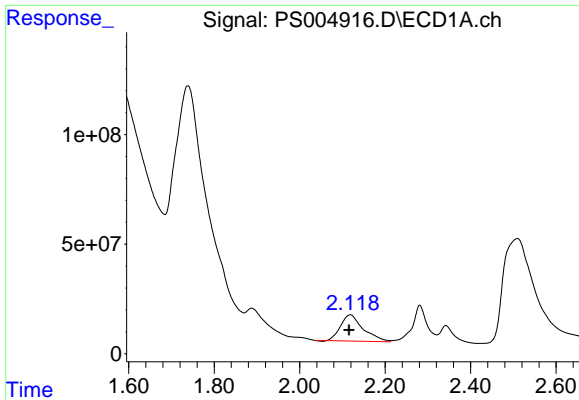
Data Path : Z:\pestpcbsrv\HPCHEM1\ECD\_S\Data\PS060419\  
 Data File : PS004916.D  
 Signal(s) : Signal #1: ECD1A.ch Signal #2: ECD2B.ch  
 Acq On : 04 Jun 2019 22:20  
 Operator : SM\AJ  
 Sample : K3111-01MS  
 Misc :  
 ALS Vial : 23 Sample Multiplier: 1

Instrument :  
 ECD\_S  
 ClientSampled :  
 FK-BPM-01-D1-D2-D1A-D2AMS

Integration File signal 1: autoint1.e  
 Integration File signal 2: autoint2.e  
 Quant Time: Jun 05 01:38:06 2019  
 Quant Method : Z:\pestpcbsrv\HPCHEM1\ECD\_S\Method\PS052019.M  
 Quant Title : 8080.M  
 QLast Update : Tue May 21 04:53:35 2019  
 Response via : Initial Calibration  
 Integrator: ChemStation

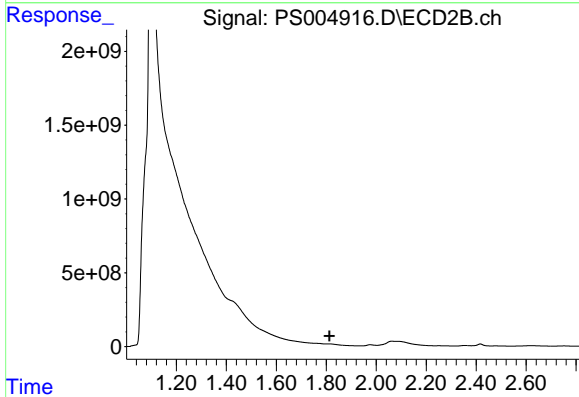
Volume Inj. : 2 µl  
 Signal #1 Phase : Rtx-CLPesticides Signal #2 Phase: Rtx-CLPesticides2  
 Signal #1 Info : 30M x 0.32mm x0.5 Signal #2 Info : 30M x 0.32mm x 0.25µm



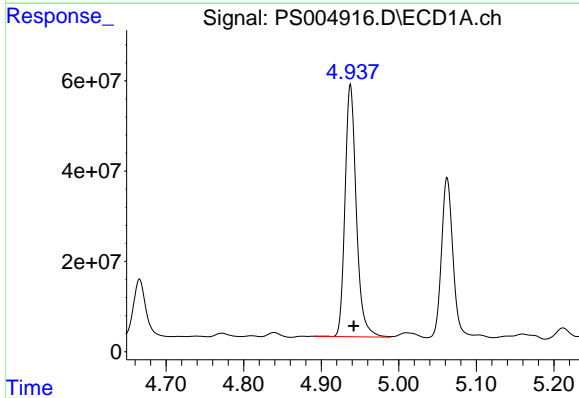


#1 Dalapon  
 R.T.: 2.118 min  
 Delta R.T.: 0.002 min  
 Response: 442708675  
 Conc: 267.06 ng/ml

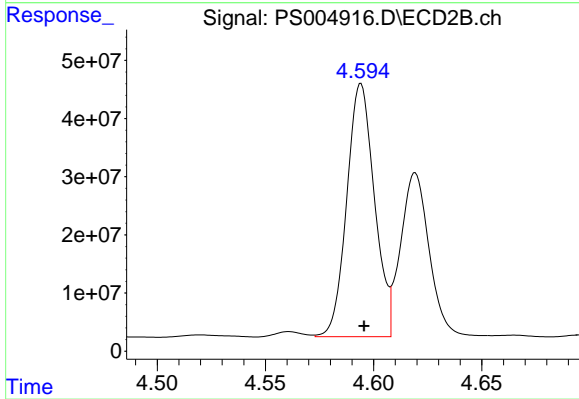
**Instrument :**  
 ECD\_S  
**ClientSampleId :**  
 FK-BPM-01-D1-D2-D1A-D2AMS



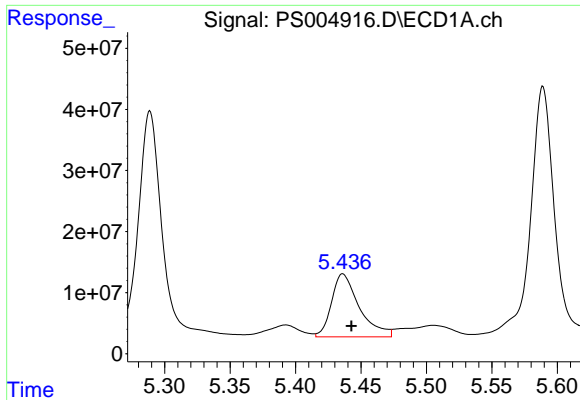
#1 Dalapon  
 R.T.: 0.000 min  
 Exp R.T. : 1.813 min  
 Response: 0  
 Conc: N.D.



#2 3,5-DICHLOROBENZOIC ACID  
 R.T.: 4.938 min  
 Delta R.T.: -0.004 min  
 Response: 564120593  
 Conc: 327.11 ng/ml



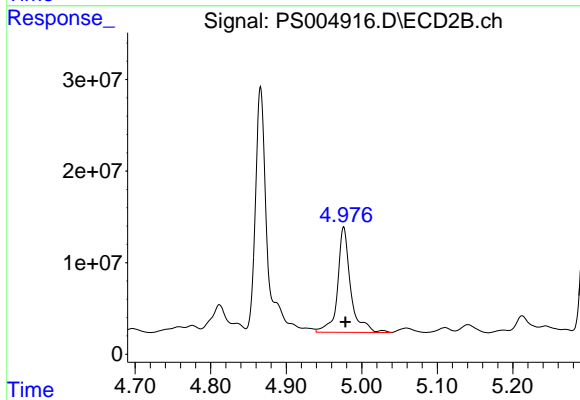
#2 3,5-DICHLOROBENZOIC ACID  
 R.T.: 4.594 min  
 Delta R.T.: -0.001 min  
 Response: 387249482  
 Conc: 314.29 ng/ml



#3 4-Nitrophenol

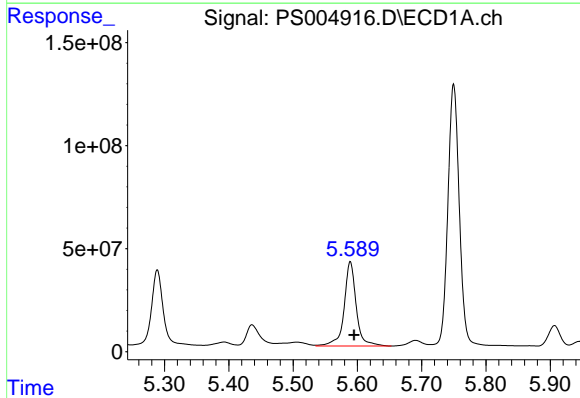
R.T.: 5.436 min  
Delta R.T.: -0.006 min  
Response: 152016505  
Conc: 243.81 ng/ml

Instrument :  
ECD\_S  
ClientSampleId :  
FK-BPM-01-D1-D2-D1A-D2AMS



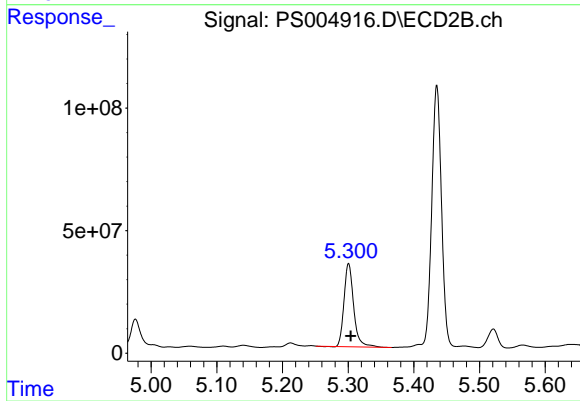
#3 4-Nitrophenol

R.T.: 4.976 min  
Delta R.T.: -0.002 min  
Response: 138314819  
Conc: 291.85 ng/ml



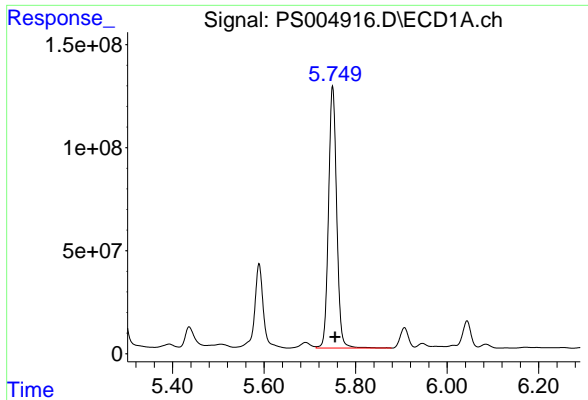
#4 2,4-DCAA

R.T.: 5.589 min  
Delta R.T.: -0.006 min  
Response: 534719825  
Conc: 381.46 ng/ml



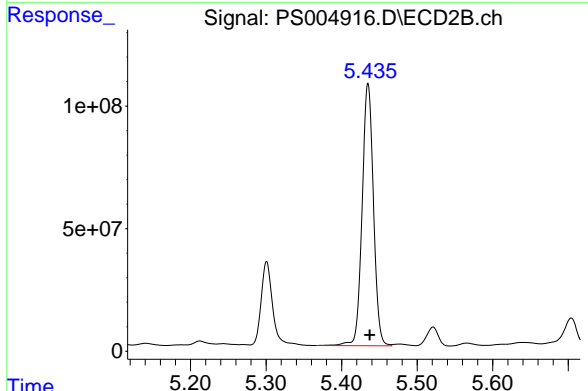
#4 2,4-DCAA

R.T.: 5.301 min  
Delta R.T.: -0.003 min  
Response: 348317362  
Conc: 361.01 ng/ml

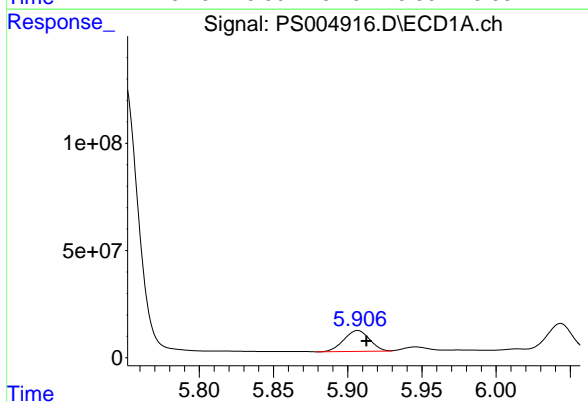


#5 DICAMBA  
 R.T.: 5.750 min  
 Delta R.T.: -0.005 min  
 Response: 1575815669  
 Conc: 296.78 ng/ml

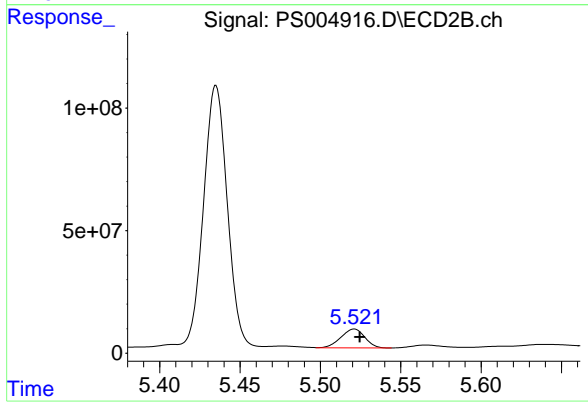
**Instrument :**  
 ECD\_S  
**ClientSampleId :**  
 FK-BPM-01-D1-D2-D1A-D2AMS



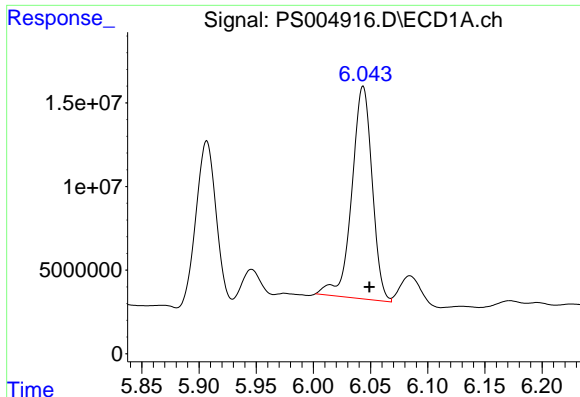
#5 DICAMBA  
 R.T.: 5.435 min  
 Delta R.T.: -0.002 min  
 Response: 1113667535  
 Conc: 301.46 ng/ml



#6 MCP  
 R.T.: 5.907 min  
 Delta R.T.: -0.006 min  
 Response: 117870694  
 Conc: 28.31 ug/ml



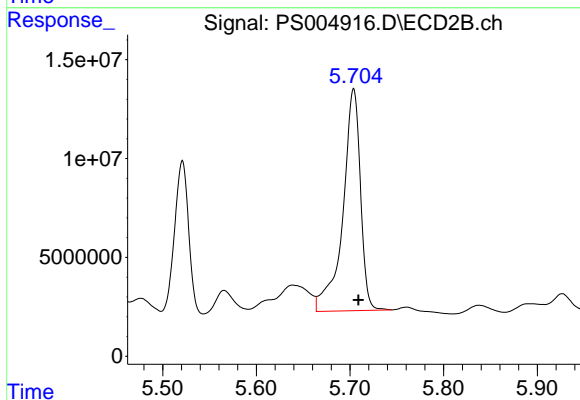
#6 MCP  
 R.T.: 5.521 min  
 Delta R.T.: -0.004 min  
 Response: 79735787  
 Conc: 29.10 ug/ml



#7 MCPA

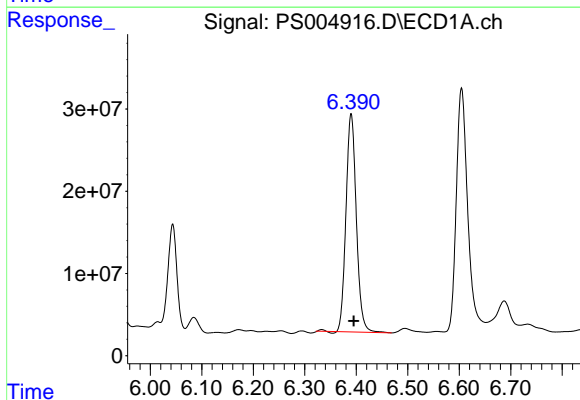
R.T.: 6.043 min  
Delta R.T.: -0.006 min  
Response: 157263613  
Conc: 27.15 ug/ml

Instrument :  
ECD\_S  
ClientSampleId :  
FK-BPM-01-D1-D2-D1A-D2AMS



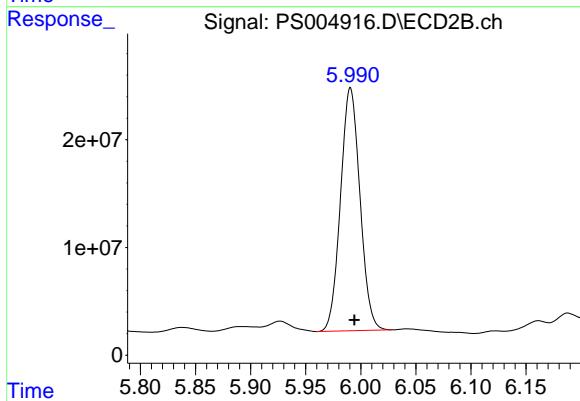
#7 MCPA

R.T.: 5.704 min  
Delta R.T.: -0.005 min  
Response: 146838451  
Conc: 35.89 ug/ml



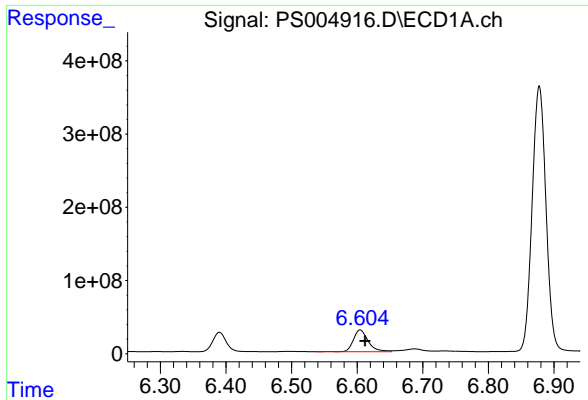
#8 DICHLORPROP

R.T.: 6.390 min  
Delta R.T.: -0.005 min  
Response: 369436431  
Conc: 282.29 ng/ml



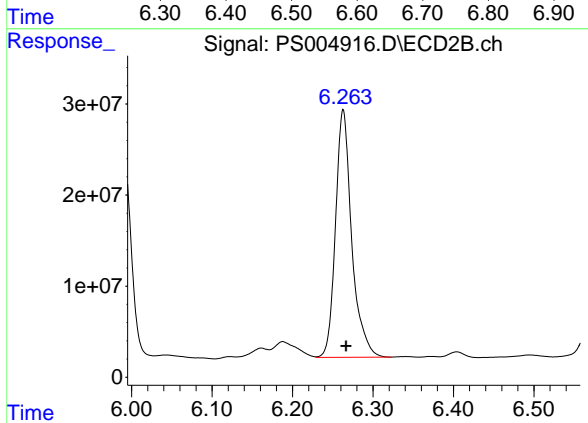
#8 DICHLORPROP

R.T.: 5.991 min  
Delta R.T.: -0.003 min  
Response: 277144768  
Conc: 293.95 ng/ml

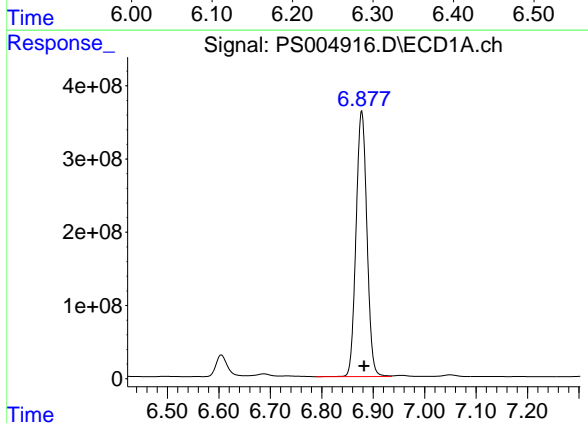


#9 2,4-D  
R.T.: 6.605 min  
Delta R.T.: -0.007 min  
Response: 464821542  
Conc: 339.80 ng/ml

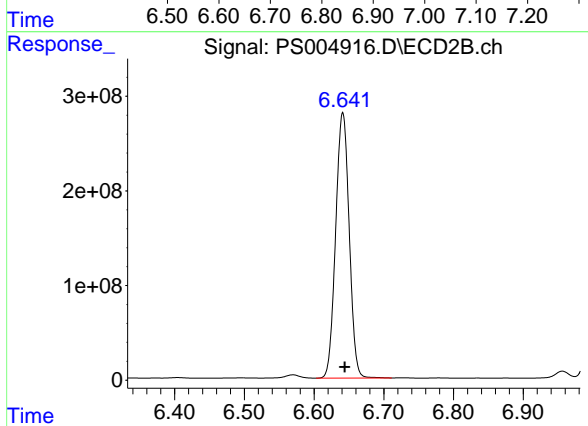
Instrument :  
ECD\_S  
ClientSampleId :  
FK-BPM-01-D1-D2-D1A-D2AMS



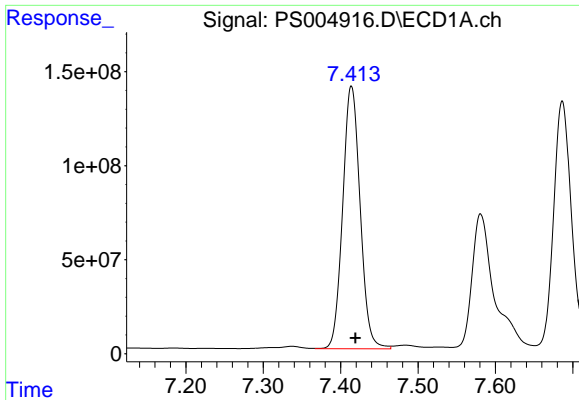
#9 2,4-D  
R.T.: 6.263 min  
Delta R.T.: -0.003 min  
Response: 380739965  
Conc: 352.25 ng/ml



#10 Pentachlorophenol  
R.T.: 6.878 min  
Delta R.T.: -0.004 min  
Response: 5316927759  
Conc: 302.77 ng/ml

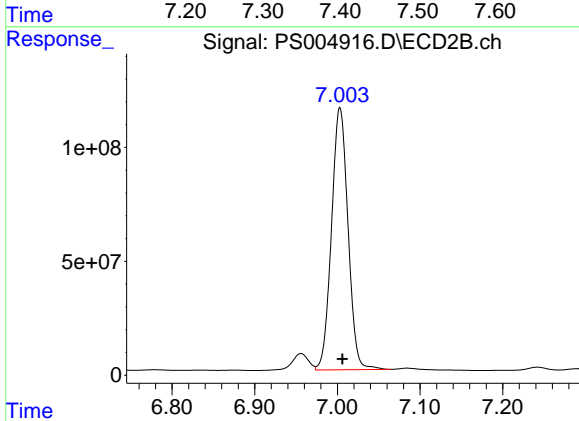


#10 Pentachlorophenol  
R.T.: 6.641 min  
Delta R.T.: -0.003 min  
Response: 3775861399  
Conc: 307.36 ng/ml

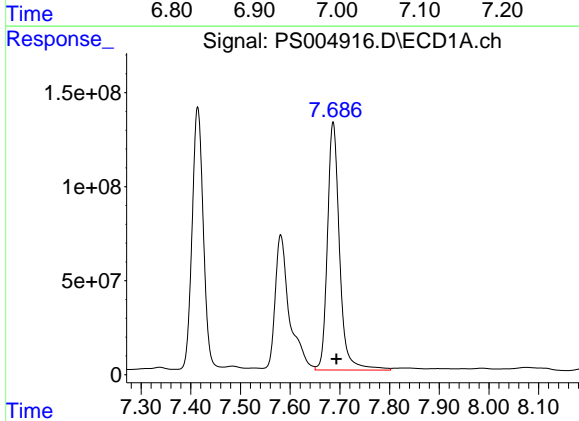


#11 2,4,5-TP (SILVEX)  
 R.T.: 7.414 min  
 Delta R.T.: -0.005 min  
 Response: 2185321111  
 Conc: 298.32 ng/ml

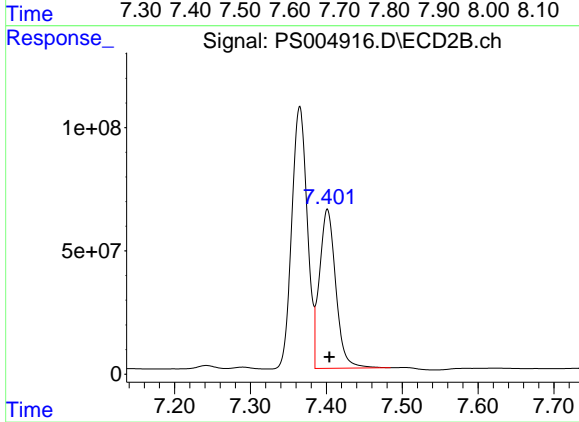
Instrument :  
 ECD\_S  
 ClientSampleId :  
 FK-BPM-01-D1-D2-D1A-D2AMS



#11 2,4,5-TP (SILVEX)  
 R.T.: 7.003 min  
 Delta R.T.: -0.003 min  
 Response: 1597659016  
 Conc: 310.51 ng/ml

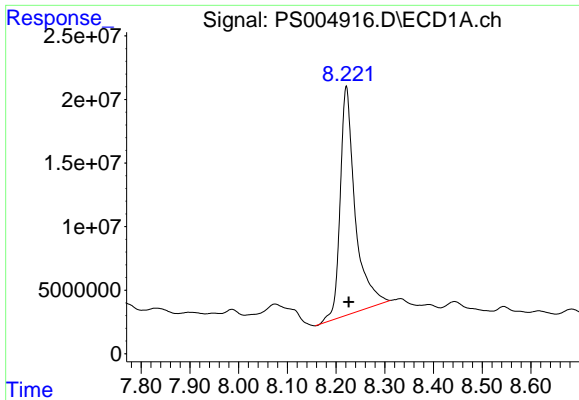


#12 2,4,5-T  
 R.T.: 7.686 min  
 Delta R.T.: -0.007 min  
 Response: 2234778385  
 Conc: 300.07 ng/ml



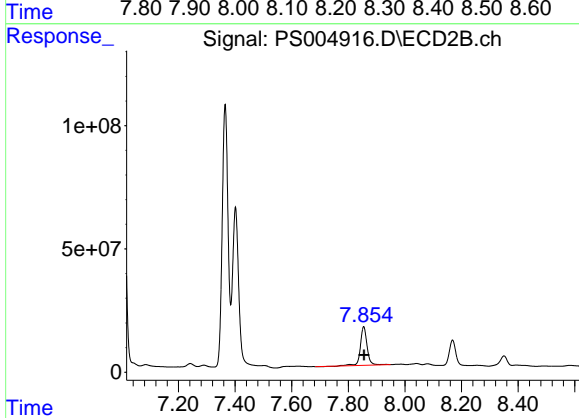
#12 2,4,5-T  
 R.T.: 7.402 min  
 Delta R.T.: -0.003 min  
 Response: 962486518  
 Conc: 215.96 ng/ml



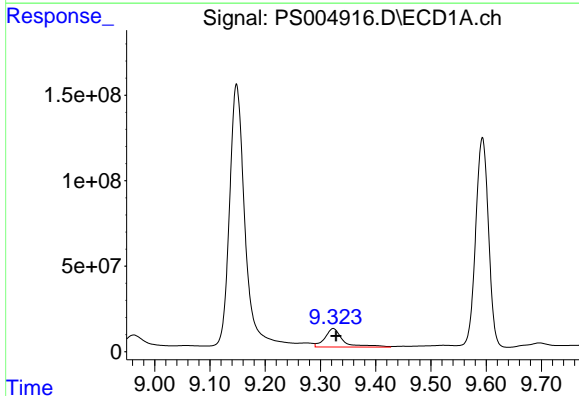


#13 2,4-DB  
R.T.: 8.221 min  
Delta R.T.: -0.005 min  
Response: 385230477  
Conc: 398.81 ng/ml

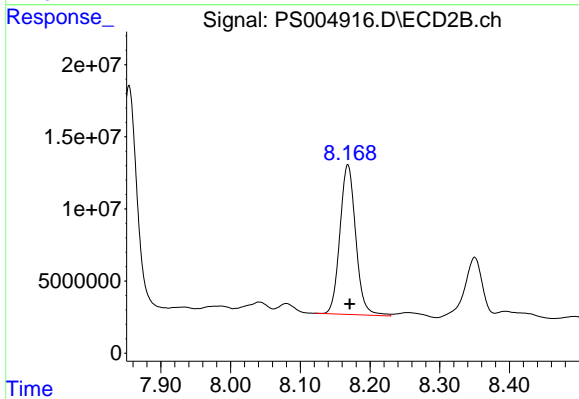
Instrument :  
ECD\_S  
ClientSampleId :  
FK-BPM-01-D1-D2-D1A-D2AMS



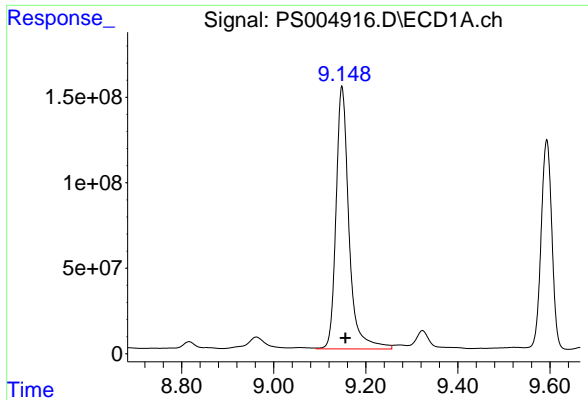
#13 2,4-DB  
R.T.: 7.854 min  
Delta R.T.: -0.002 min  
Response: 259062340  
Conc: 396.35 ng/ml



#14 DINOSEB  
R.T.: 9.323 min  
Delta R.T.: -0.005 min  
Response: 247045110  
Conc: 41.77 ng/ml



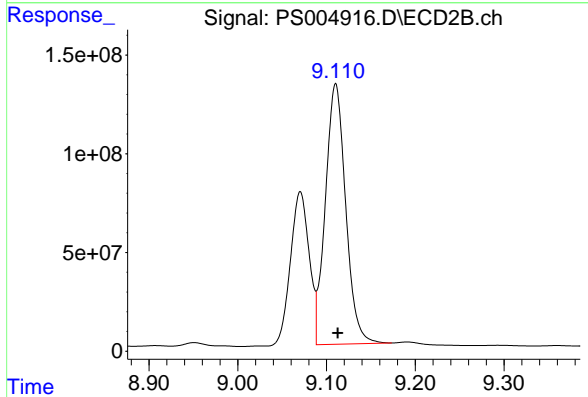
#14 DINOSEB  
R.T.: 8.168 min  
Delta R.T.: -0.003 min  
Response: 163750883  
Conc: 42.60 ng/ml



#15 Picloram

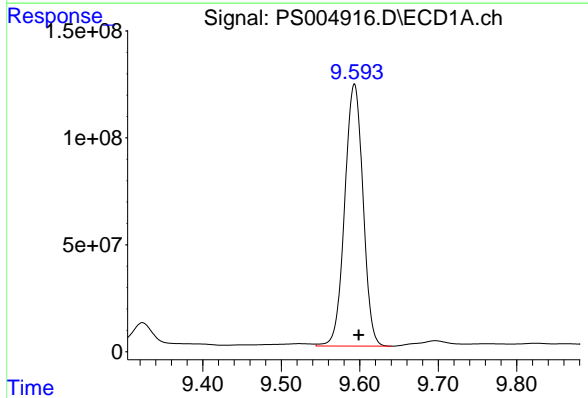
R.T.: 9.148 min  
 Delta R.T.: -0.007 min  
 Response: 2993172263  
 Conc: 287.25 ng/ml

**Instrument :**  
 ECD\_S  
**ClientSampleId :**  
 FK-BPM-01-D1-D2-D1A-D2AMS



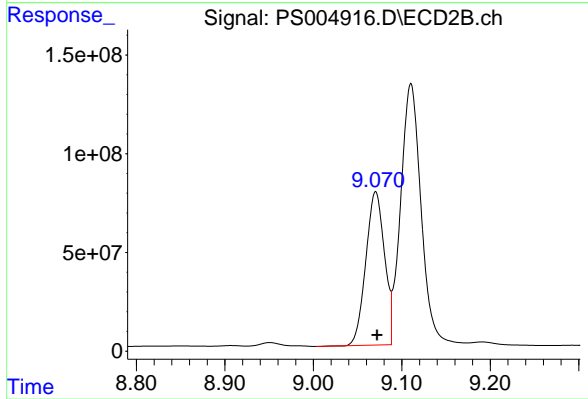
#15 Picloram

R.T.: 9.110 min  
 Delta R.T.: -0.002 min  
 Response: 2100844502  
 Conc: 281.60 ng/ml



#16 DCPA

R.T.: 9.593 min  
 Delta R.T.: -0.006 min  
 Response: 1985699227  
 Conc: 222.96 ng/ml



#16 DCPA

R.T.: 9.070 min  
 Delta R.T.: -0.002 min  
 Response: 1138398472  
 Conc: 175.73 ng/ml