

Data Path : Z:\pestpcbsrv\HPCHEM1\ECD_S\Data\PS060421\
 Data File : PS015231.D
 Signal(s) : Signal #1: ECD1A.ch Signal #2: ECD2B.ch
 Acq On : 05 Jun 2021 01:27
 Operator : DD\AJ
 Sample : M2580-31
 Misc :
 ALS Vial : 36 Sample Multiplier: 1

Instrument :
 ECD_S
 ClientSampleId :
 18-B5(2-4)

Integration File signal 1: autoint1.e
 Integration File signal 2: autoint2.e
 Quant Time: Jun 05 05:58:28 2021
 Quant Method : Z:\pestpcbsrv\HPCHEM1\ECD_S\Method\PS052821.M
 Quant Title : 8080.M
 QLast Update : Fri May 28 14:34:22 2021
 Response via : Initial Calibration
 Integrator: ChemStation

Volume Inj. : 2 µl
 Signal #1 Phase : Rtx-CLPesticides Signal #2 Phase: Rtx-CLPesticides2
 Signal #1 Info : 30M x 0.32mm x0.5 Signal #2 Info : 30M x 0.32mm x 0.25µm

Compound	RT#1	RT#2	Resp#1	Resp#2	ng/ml	ng/ml

System Monitoring Compounds						
4) S 2,4-DCAA	7.226	6.784	797.1E6	172.6E6	316.280	322.115
Target Compounds						
1) T Dalapon	3.004	2.488	92420773	49831424	35.163	76.142 #
2) T 3,5-DICHL...	6.472	5.950	8297139	4516954	2.406	5.591 #
3) T 4-Nitroph...	7.064	6.434	14248962	17469418	10.108	54.905 #
5) T DICAMBA	7.407	6.995f	9789896	5260866	1.027	2.377 #
6) T MCPP	7.589	7.101f	18698356	4549824	2.598	2.575
7) T MCPA	7.771	7.302	3046448	44288792	<MDL	17.042 #
8) T DICHLORPROP	8.064f	7.588	35250343	11071009	15.306	20.379 #
9) T 2,4-D	8.336	7.849	3754457	8438277	1.473	13.102 #
10) T Pentachlo...	8.654	8.278	3670173	7249114	<MDL	<MDL #
11) T 2,4,5-TP ...	9.172	8.696	22378530	20187118	1.803	6.956 #
12) T 2,4,5-T	9.434f	0.000	115.6E6	0	9.622	N.D. #
13) T 2,4-DB	10.084f	0.000	21159683	0	8.309	N.D. #
14) T DINOSEB	11.166f	9.877	99359090	17200164	12.436	9.419
15) T Picloram	10.992	10.859	51115188	6009905	3.085	1.447 #
16) T DCPA	11.473	10.798	4329077	4710127	<MDL	1.093 #

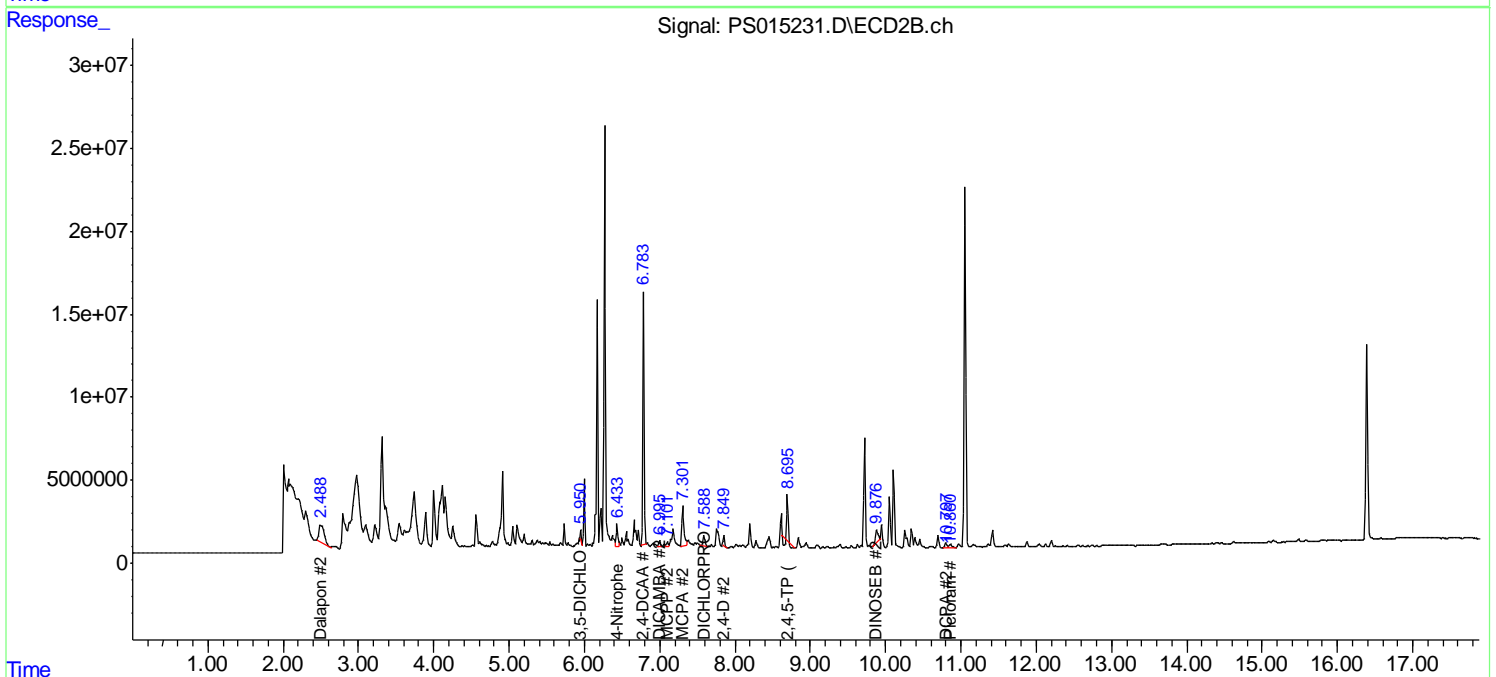
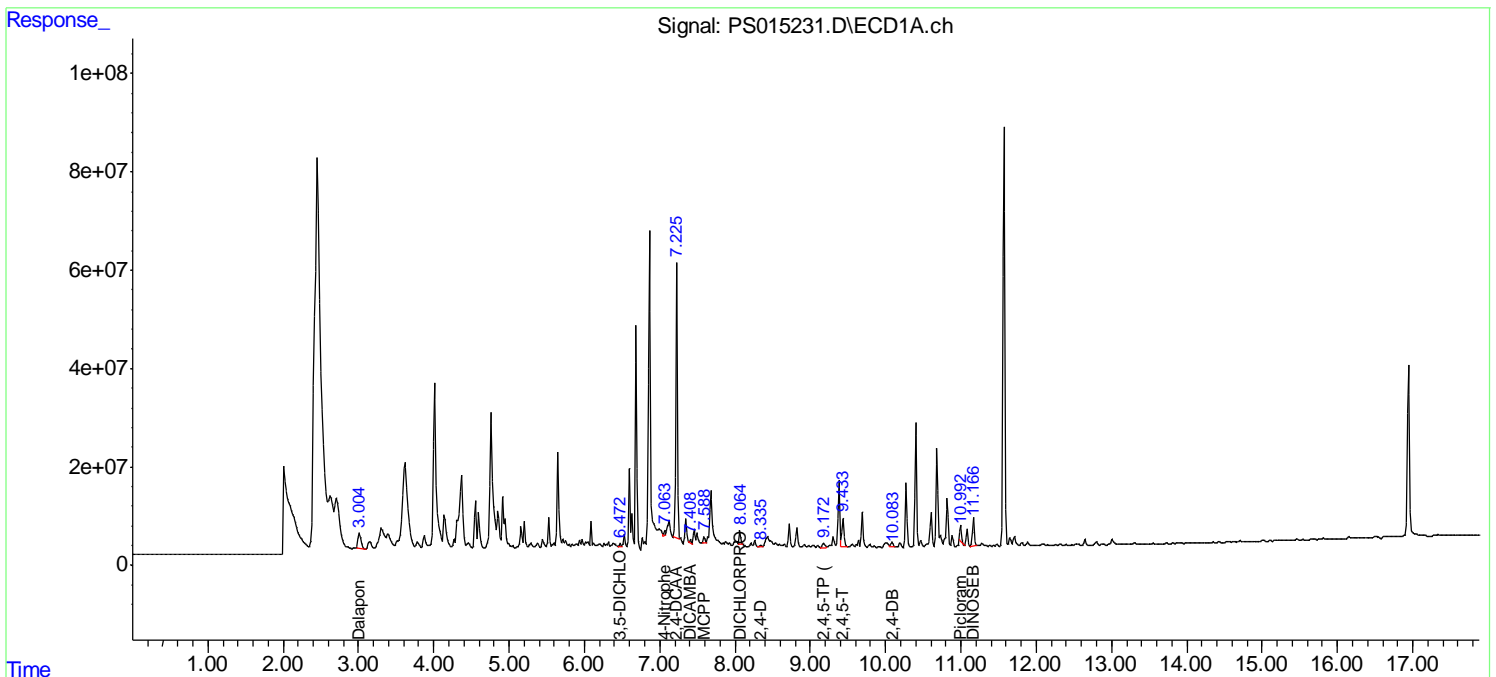
(f)=RT Delta > 1/2 Window (#)=Amounts differ by > 25% (m)=manual int.

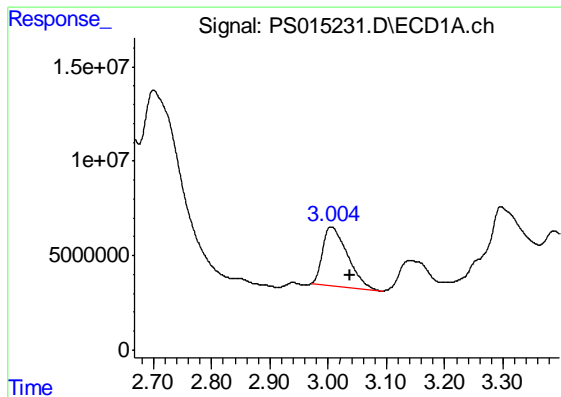
Data Path : Z:\pestpcbsrv\HPCHEM1\ECD_S\Data\PS060421\
 Data File : PS015231.D
 Signal(s) : Signal #1: ECD1A.ch Signal #2: ECD2B.ch
 Acq On : 05 Jun 2021 01:27
 Operator : DD\AJ
 Sample : M2580-31
 Misc :
 ALS Vial : 36 Sample Multiplier: 1

Instrument :
 ECD_S
 Client Sampled :
 18-B5(2-4)

Integration File signal 1: autoint1.e
 Integration File signal 2: autoint2.e
 Quant Time: Jun 05 05:58:28 2021
 Quant Method : Z:\pestpcbsrv\HPCHEM1\ECD_S\Method\PS052821.M
 Quant Title : 8080.M
 QLast Update : Fri May 28 14:34:22 2021
 Response via : Initial Calibration
 Integrator: ChemStation

Volume Inj. : 2 µl
 Signal #1 Phase : Rtx-CLPesticides Signal #2 Phase: Rtx-CLPesticides2
 Signal #1 Info : 30M x 0.32mm x0.5 Signal #2 Info : 30M x 0.32mm x 0.25µm

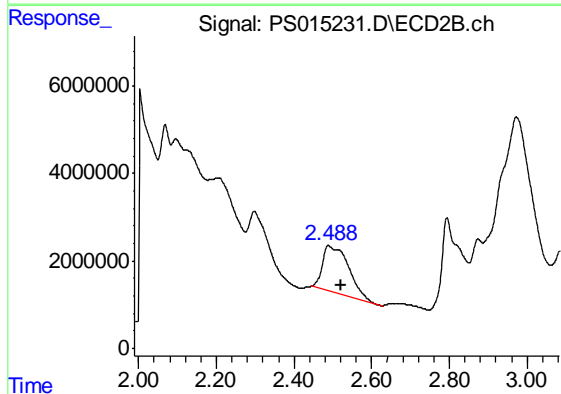




#1 Dalapon

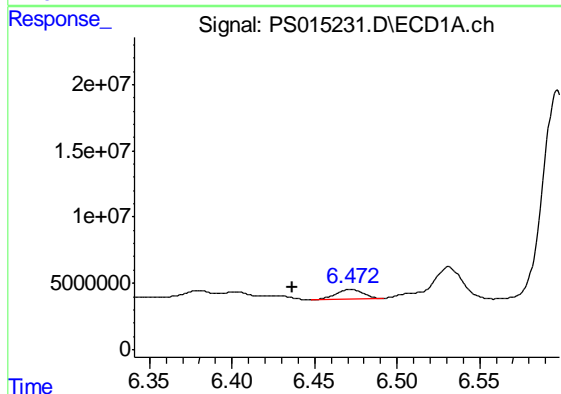
R.T.: 3.004 min
 Delta R.T.: -0.033 min
 Response: 92420773
 Conc: 35.16 ng/ml

Instrument :
 ECD_S
 ClientSampleId :
 18-B5(2-4)



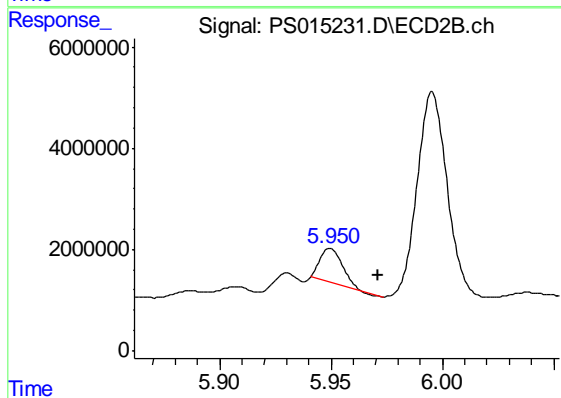
#1 Dalapon

R.T.: 2.488 min
 Delta R.T.: -0.032 min
 Response: 49831424
 Conc: 76.14 ng/ml



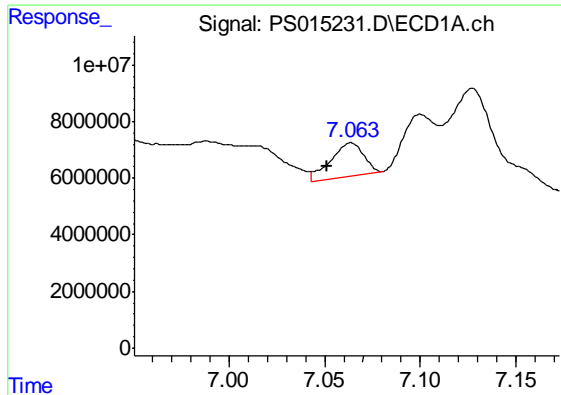
#2 3,5-DICHLOROBENZOIC ACID

R.T.: 6.472 min
 Delta R.T.: 0.036 min
 Response: 8297139
 Conc: 2.41 ng/ml



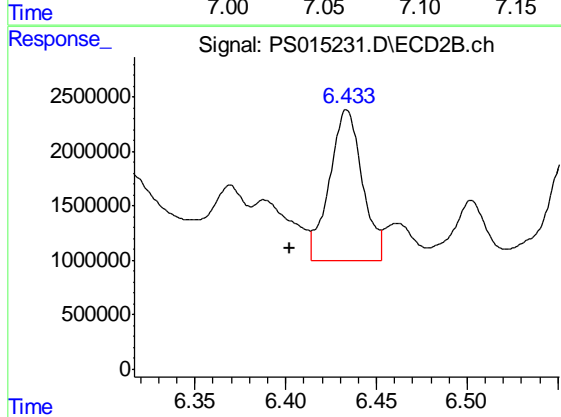
#2 3,5-DICHLOROBENZOIC ACID

R.T.: 5.950 min
 Delta R.T.: -0.021 min
 Response: 4516954
 Conc: 5.59 ng/ml

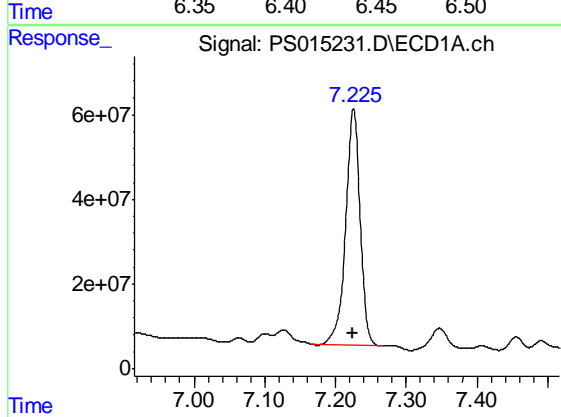


#3 4-Nitrophenol
 R.T.: 7.064 min
 Delta R.T.: 0.013 min
 Response: 14248962
 Conc: 10.11 ng/ml

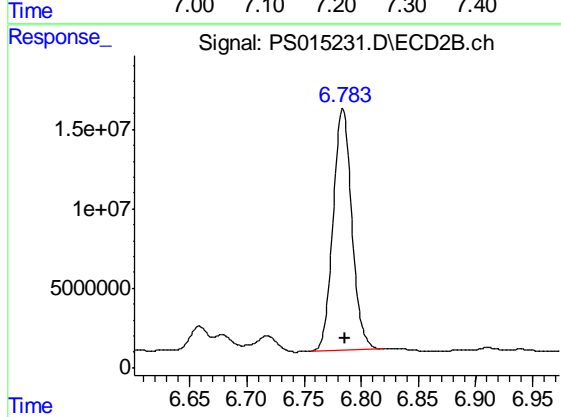
Instrument :
 ECD_S
 ClientSampleId :
 18-B5(2-4)



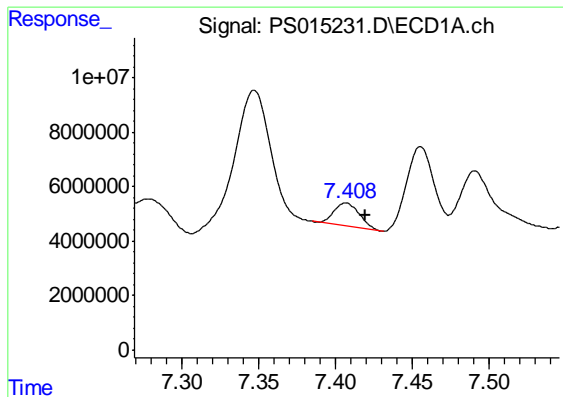
#3 4-Nitrophenol
 R.T.: 6.434 min
 Delta R.T.: 0.031 min
 Response: 17469418
 Conc: 54.91 ng/ml



#4 2,4-DCAA
 R.T.: 7.226 min
 Delta R.T.: 0.000 min
 Response: 797143163
 Conc: 316.28 ng/ml



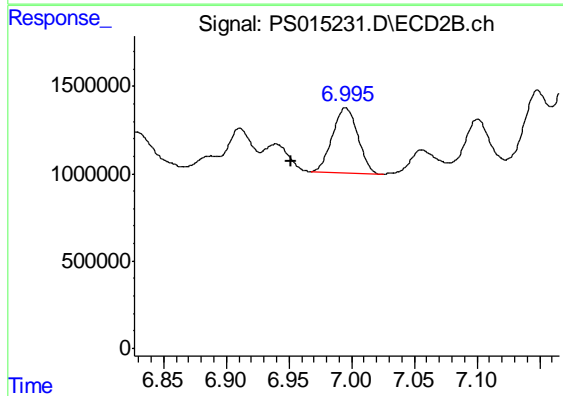
#4 2,4-DCAA
 R.T.: 6.784 min
 Delta R.T.: -0.002 min
 Response: 172579671
 Conc: 322.11 ng/ml



#5 DICAMBA

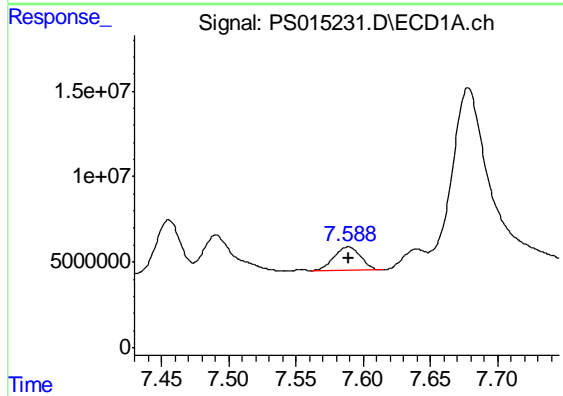
R.T.: 7.407 min
 Delta R.T.: -0.012 min
 Response: 9789896
 Conc: 1.03 ng/ml

Instrument :
 ECD_S
 ClientSampleId :
 18-B5(2-4)



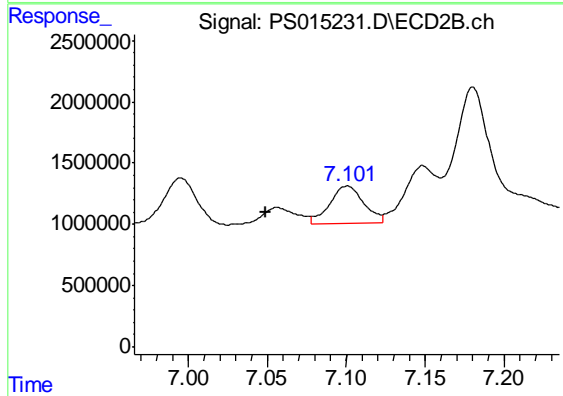
#5 DICAMBA

R.T.: 6.995 min
 Delta R.T.: 0.043 min
 Response: 5260866
 Conc: 2.38 ng/ml



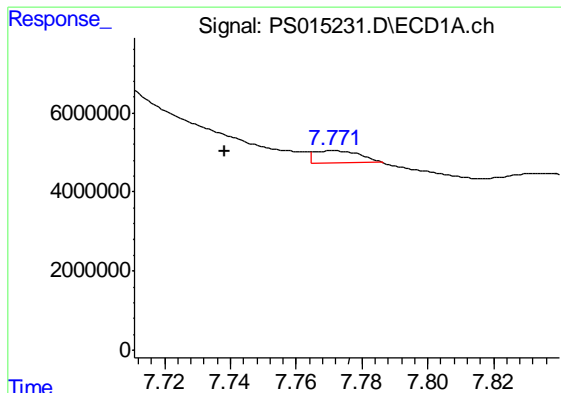
#6 MCPP

R.T.: 7.589 min
 Delta R.T.: 0.000 min
 Response: 18698356
 Conc: 2.60 ug/ml



#6 MCPP

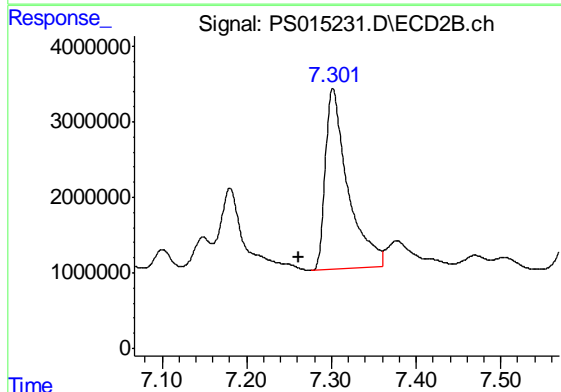
R.T.: 7.101 min
 Delta R.T.: 0.052 min
 Response: 4549824
 Conc: 2.57 ug/ml



#7 MCPA

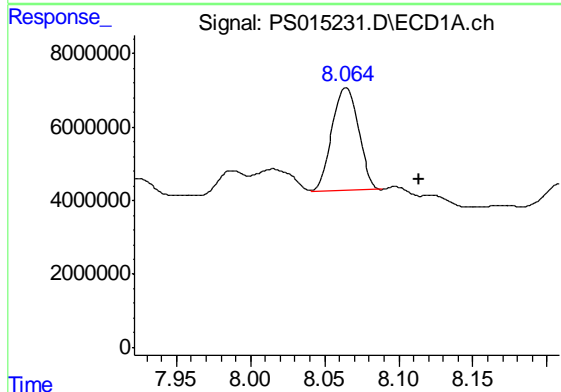
R.T.: 7.771 min
 Delta R.T.: 0.033 min
 Response: 3046448
 Conc: N.D.

Instrument :
 ECD_S
 ClientSampleId :
 18-B5(2-4)



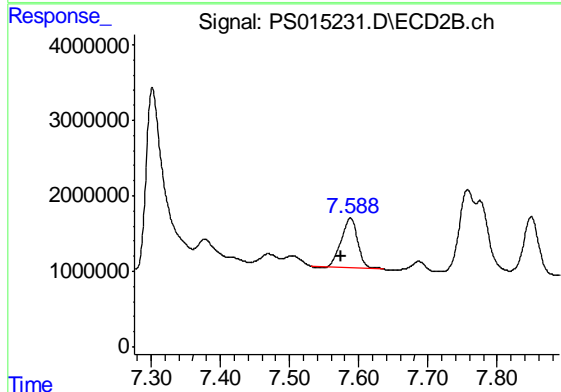
#7 MCPA

R.T.: 7.302 min
 Delta R.T.: 0.040 min
 Response: 44288792
 Conc: 17.04 ug/ml



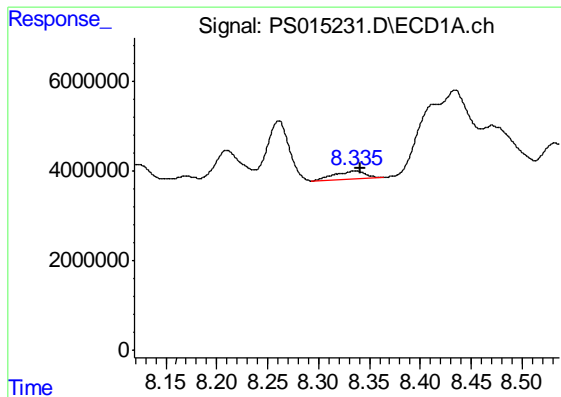
#8 DICHLORPROP

R.T.: 8.064 min
 Delta R.T.: -0.049 min
 Response: 35250343
 Conc: 15.31 ng/ml



#8 DICHLORPROP

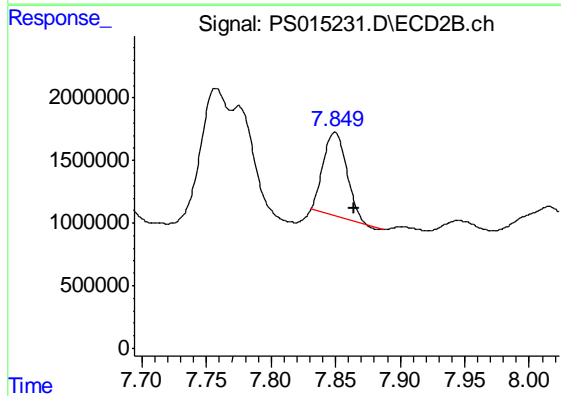
R.T.: 7.588 min
 Delta R.T.: 0.014 min
 Response: 11071009
 Conc: 20.38 ng/ml



#9 2,4-D

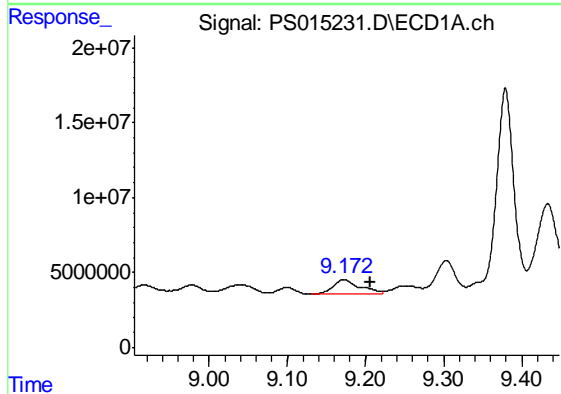
R.T.: 8.336 min
 Delta R.T.: -0.005 min
 Response: 3754457
 Conc: 1.47 ng/ml

Instrument :
 ECD_S
 ClientSampleId :
 18-B5(2-4)



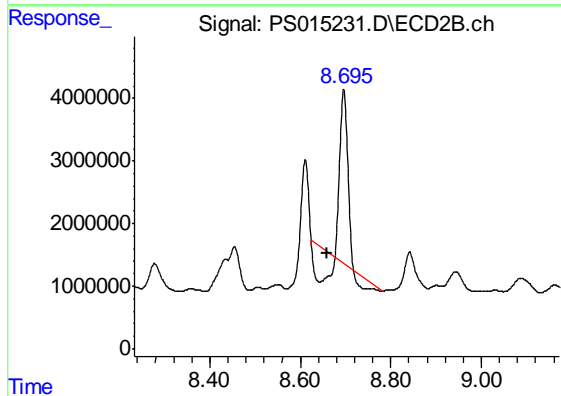
#9 2,4-D

R.T.: 7.849 min
 Delta R.T.: -0.015 min
 Response: 8438277
 Conc: 13.10 ng/ml



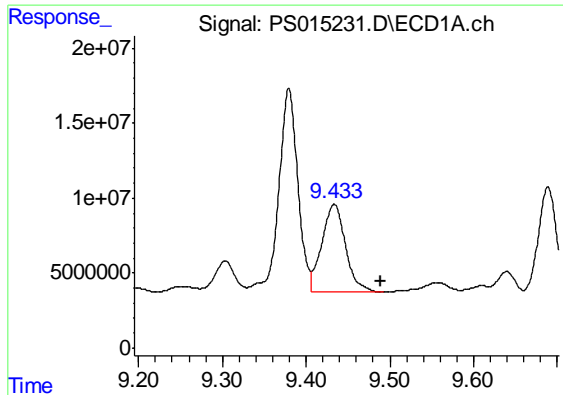
#11 2,4,5-TP (SILVEX)

R.T.: 9.172 min
 Delta R.T.: -0.035 min
 Response: 22378530
 Conc: 1.80 ng/ml



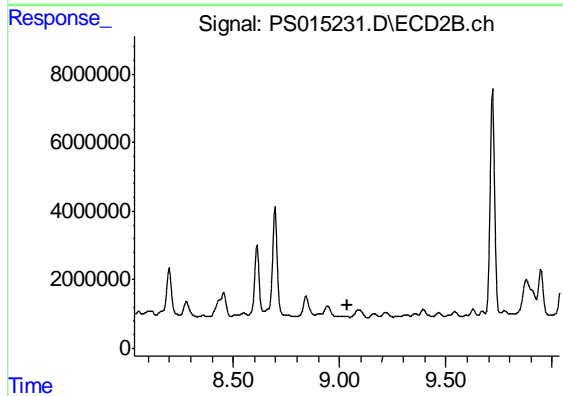
#11 2,4,5-TP (SILVEX)

R.T.: 8.696 min
 Delta R.T.: 0.038 min
 Response: 20187118
 Conc: 6.96 ng/ml

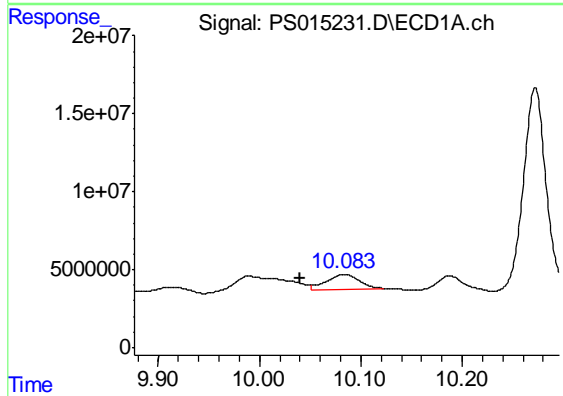


#12 2,4,5-T
 R.T.: 9.434 min
 Delta R.T.: -0.056 min
 Response: 115568435
 Conc: 9.62 ng/ml

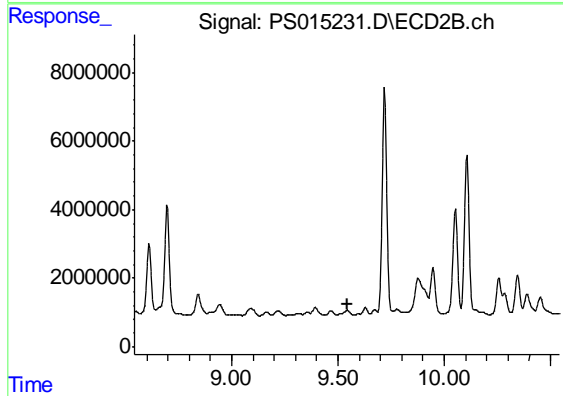
Instrument :
 ECD_S
ClientSampled :
 18-B5(2-4)



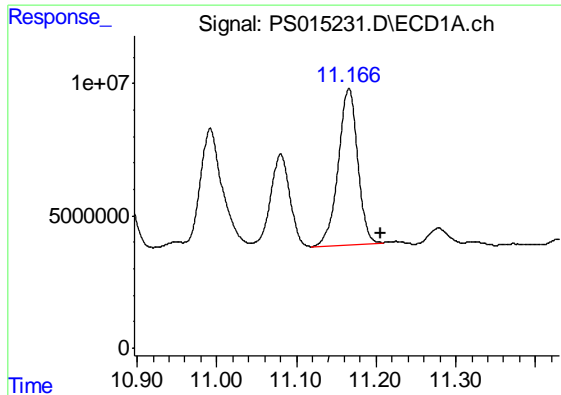
#12 2,4,5-T
 R.T.: 0.000 min
 Exp R.T. : 9.035 min
 Response: 0
 Conc: N.D.



#13 2,4-DB
 R.T.: 10.084 min
 Delta R.T.: 0.044 min
 Response: 21159683
 Conc: 8.31 ng/ml



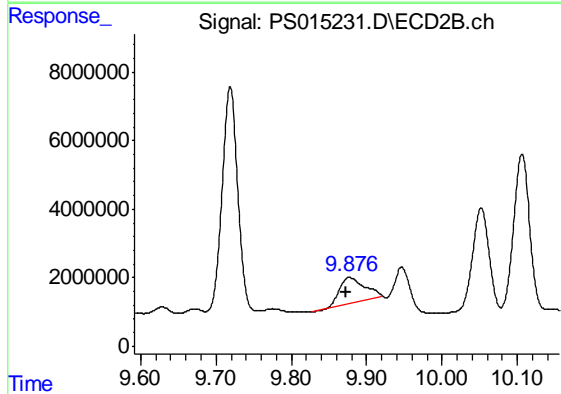
#13 2,4-DB
 R.T.: 0.000 min
 Exp R.T. : 9.542 min
 Response: 0
 Conc: N.D.



#14 DINOSEB

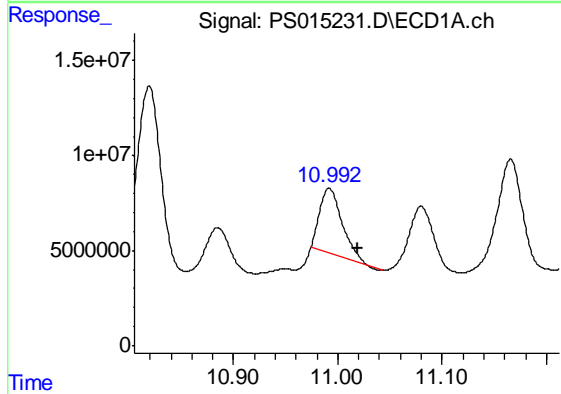
R.T.: 11.166 min
 Delta R.T.: -0.041 min
 Response: 99359090
 Conc: 12.44 ng/ml

Instrument :
 ECD_S
 ClientSampleId :
 18-B5(2-4)



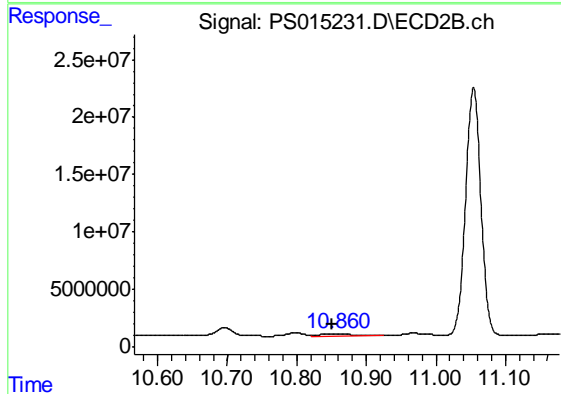
#14 DINOSEB

R.T.: 9.877 min
 Delta R.T.: 0.005 min
 Response: 17200164
 Conc: 9.42 ng/ml



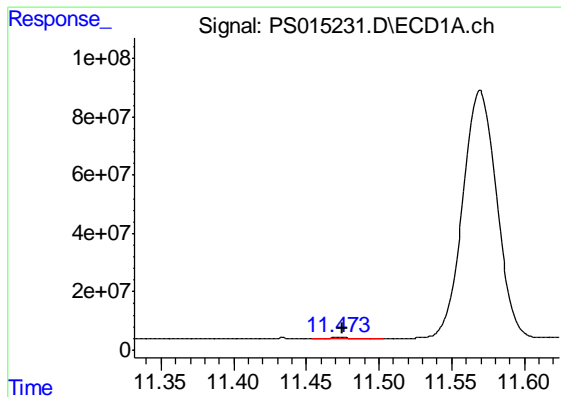
#15 Picloram

R.T.: 10.992 min
 Delta R.T.: -0.027 min
 Response: 51115188
 Conc: 3.09 ng/ml



#15 Picloram

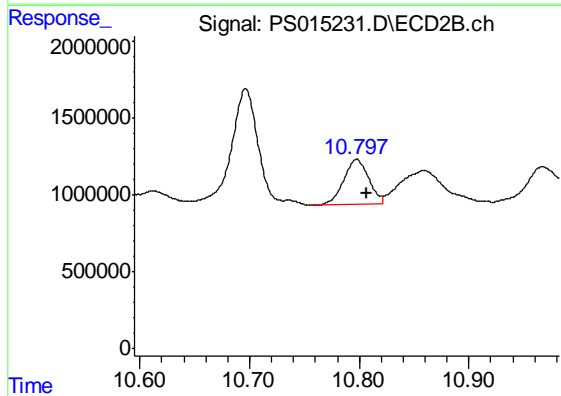
R.T.: 10.859 min
 Delta R.T.: 0.009 min
 Response: 6009905
 Conc: 1.45 ng/ml



#16 DCPA

R.T.: 11.473 min
 Delta R.T.: -0.002 min
 Response: 4329077
 Conc: N.D.

Instrument :
 ECD_S
 ClientSampleId :
 18-B5(2-4)



#16 DCPA

R.T.: 10.798 min
 Delta R.T.: -0.009 min
 Response: 4710127
 Conc: 1.09 ng/ml