

Data Path : Z:\pestpcbsrv\HPCHEM1\ECD\_S\Data\PS060421\  
 Data File : PS015219.D  
 Signal(s) : Signal #1: ECD1A.ch Signal #2: ECD2B.ch  
 Acq On : 04 Jun 2021 20:37  
 Operator : DD\AJ  
 Sample : M2580-21  
 Misc :  
 ALS Vial : 26 Sample Multiplier: 1

Instrument :  
 ECD\_S  
 ClientSampleId :  
 18-B2(0-2)

Integration File signal 1: autoint1.e  
 Integration File signal 2: autoint2.e  
 Quant Time: Jun 05 05:53:57 2021  
 Quant Method : Z:\pestpcbsrv\HPCHEM1\ECD\_S\Method\PS052821.M  
 Quant Title : 8080.M  
 QLast Update : Fri May 28 14:34:22 2021  
 Response via : Initial Calibration  
 Integrator: ChemStation

Volume Inj. : 2 µl  
 Signal #1 Phase : Rtx-CLPesticides Signal #2 Phase: Rtx-CLPesticides2  
 Signal #1 Info : 30M x 0.32mm x0.5 Signal #2 Info : 30M x 0.32mm x 0.25µm

Compound	RT#1	RT#2	Resp#1	Resp#2	ng/ml	ng/ml
-----						
System Monitoring Compounds						
4) S 2,4-DCAA	7.226	6.784	1092.1E6	243.0E6	433.307	453.560

Target Compounds

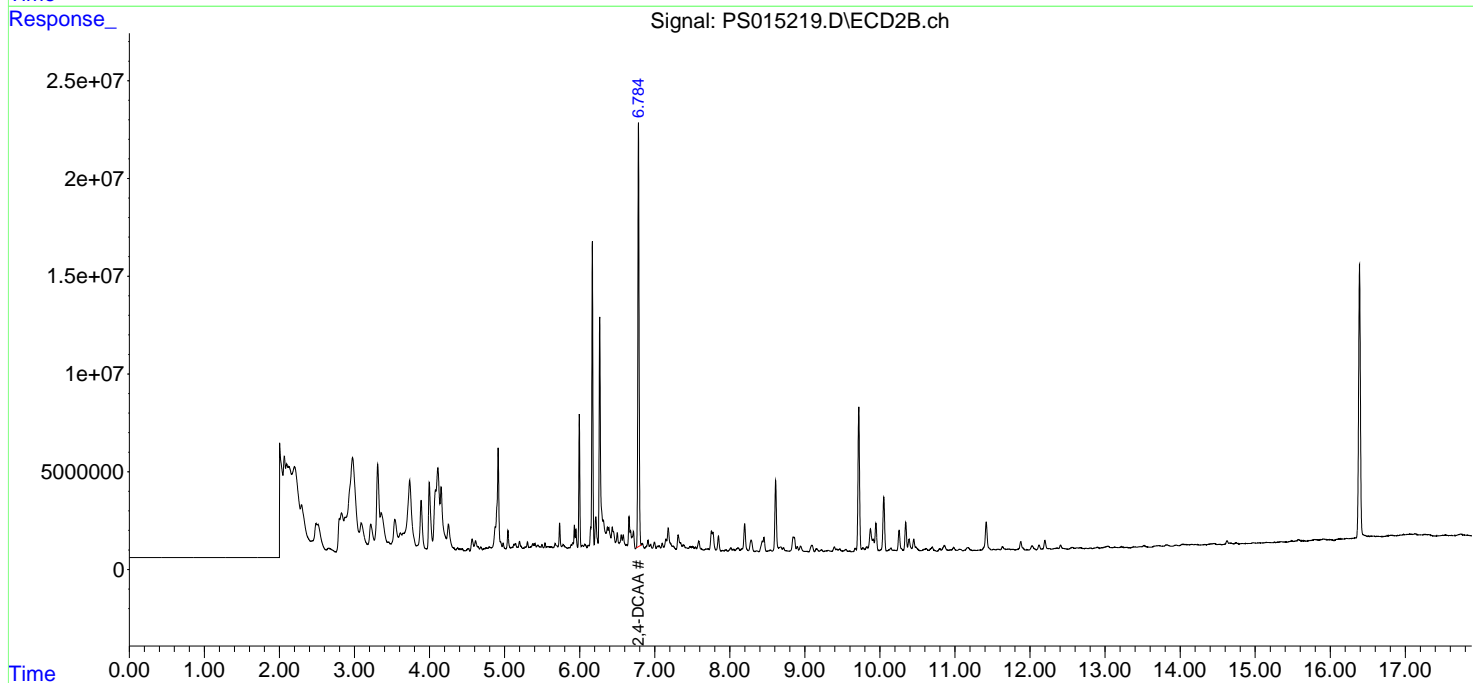
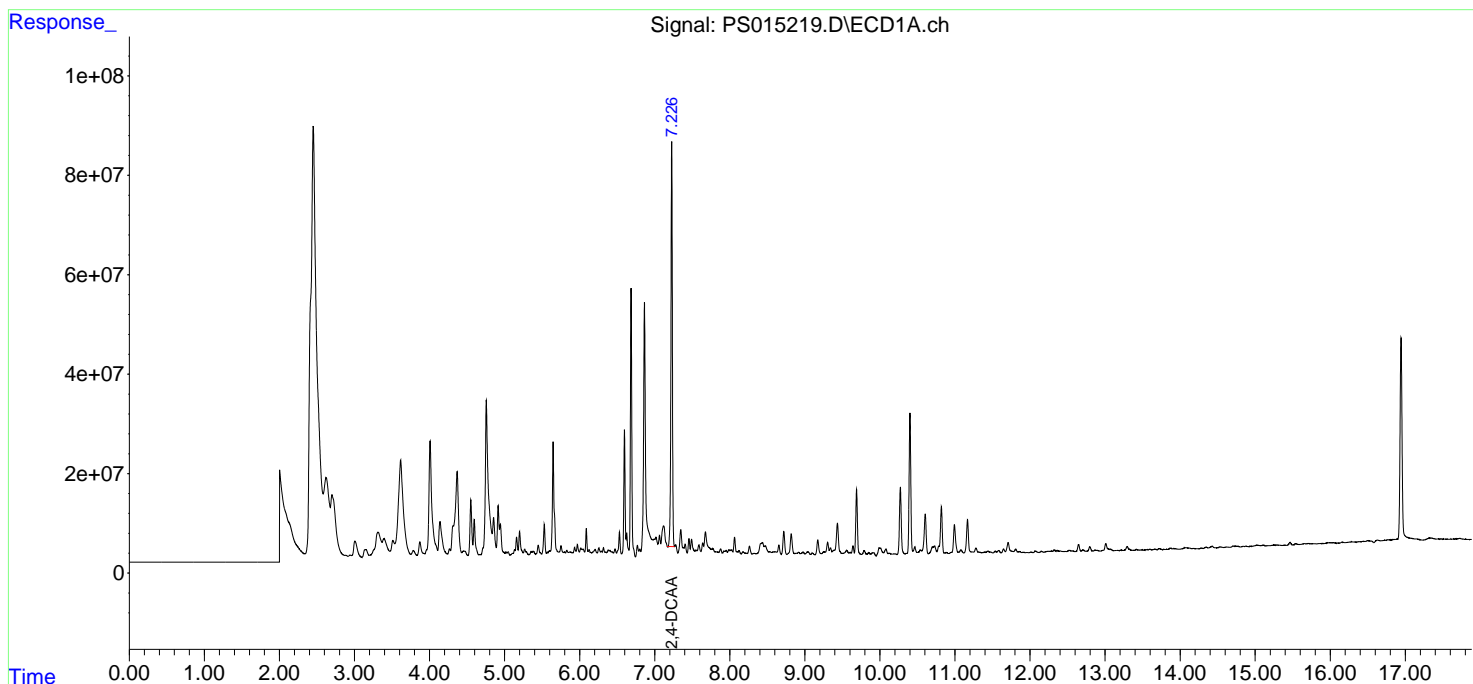
(f)=RT Delta > 1/2 Window (#)=Amounts differ by > 25% (m)=manual int.

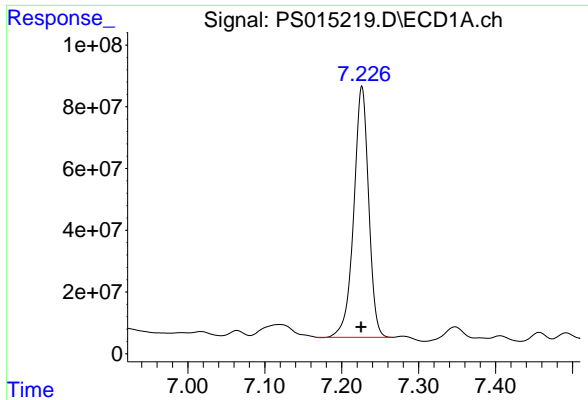
Data Path : Z:\pestpcbsrv\HPCHEM1\ECD\_S\Data\PS060421\  
 Data File : PS015219.D  
 Signal(s) : Signal #1: ECD1A.ch Signal #2: ECD2B.ch  
 Acq On : 04 Jun 2021 20:37  
 Operator : DD\AJ  
 Sample : M2580-21  
 Misc :  
 ALS Vial : 26 Sample Multiplier: 1

Instrument :  
 ECD\_S  
 ClientSampled :  
 18-B2(0-2)

Integration File signal 1: autoint1.e  
 Integration File signal 2: autoint2.e  
 Quant Time: Jun 05 05:53:57 2021  
 Quant Method : Z:\pestpcbsrv\HPCHEM1\ECD\_S\Method\PS052821.M  
 Quant Title : 8080.M  
 QLast Update : Fri May 28 14:34:22 2021  
 Response via : Initial Calibration  
 Integrator: ChemStation

Volume Inj. : 2 µl  
 Signal #1 Phase : Rtx-CLPesticides Signal #2 Phase: Rtx-CLPesticides2  
 Signal #1 Info : 30M x 0.32mm x0.5 Signal #2 Info : 30M x 0.32mm x 0.25µm

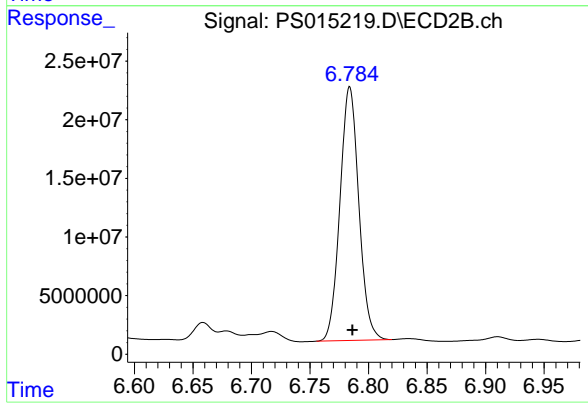




#4 2,4-DCAA

R.T.: 7.226 min  
Delta R.T.: 0.001 min  
Response: 1092096571  
Conc: 433.31 ng/ml

Instrument :  
ECD\_S  
ClientSampleId :  
18-B2(0-2)



#4 2,4-DCAA

R.T.: 6.784 min  
Delta R.T.: -0.002 min  
Response: 243004476  
Conc: 453.56 ng/ml