

Data Path : Z:\pestpcbsrv\HPCHEM1\ECD_S\Data\PS060520\
 Data File : PS010695.D
 Signal(s) : Signal #1: ECD1A.ch Signal #2: ECD2B.ch
 Acq On : 05 Jun 2020 09:13
 Operator : DD\AJ
 Sample : I.BLK
 Misc :
 ALS Vial : 2 Sample Multiplier: 1

Instrument :
 ECD_S
 ClientSampleId :

Integration File signal 1: autoint1.e
 Integration File signal 2: autoint2.e
 Quant Time: Jun 05 14:26:35 2020
 Quant Method : Z:\pestpcbsrv\HPCHEM1\ECD_S\Method\PS052920.M
 Quant Title : 8080.M
 QLast Update : Fri May 29 15:43:50 2020
 Response via : Initial Calibration
 Integrator: ChemStation

Volume Inj. : 2 µl
 Signal #1 Phase : Rtx-CLPesticides Signal #2 Phase: Rtx-CLPesticides2
 Signal #1 Info : 30M x 0.32mm x0.5 Signal #2 Info : 30M x 0.32mm x 0.25µm

Compound	RT#1	RT#2	Resp#1	Resp#2	ng/ml	ng/ml

System Monitoring Compounds						
4) S 2,4-DCAA	7.230	6.921	364.2E6	279.1E6	460.465	511.745
Target Compounds						
9) T 2,4-D	0.000	7.947	0	14399168	N.D.	18.990

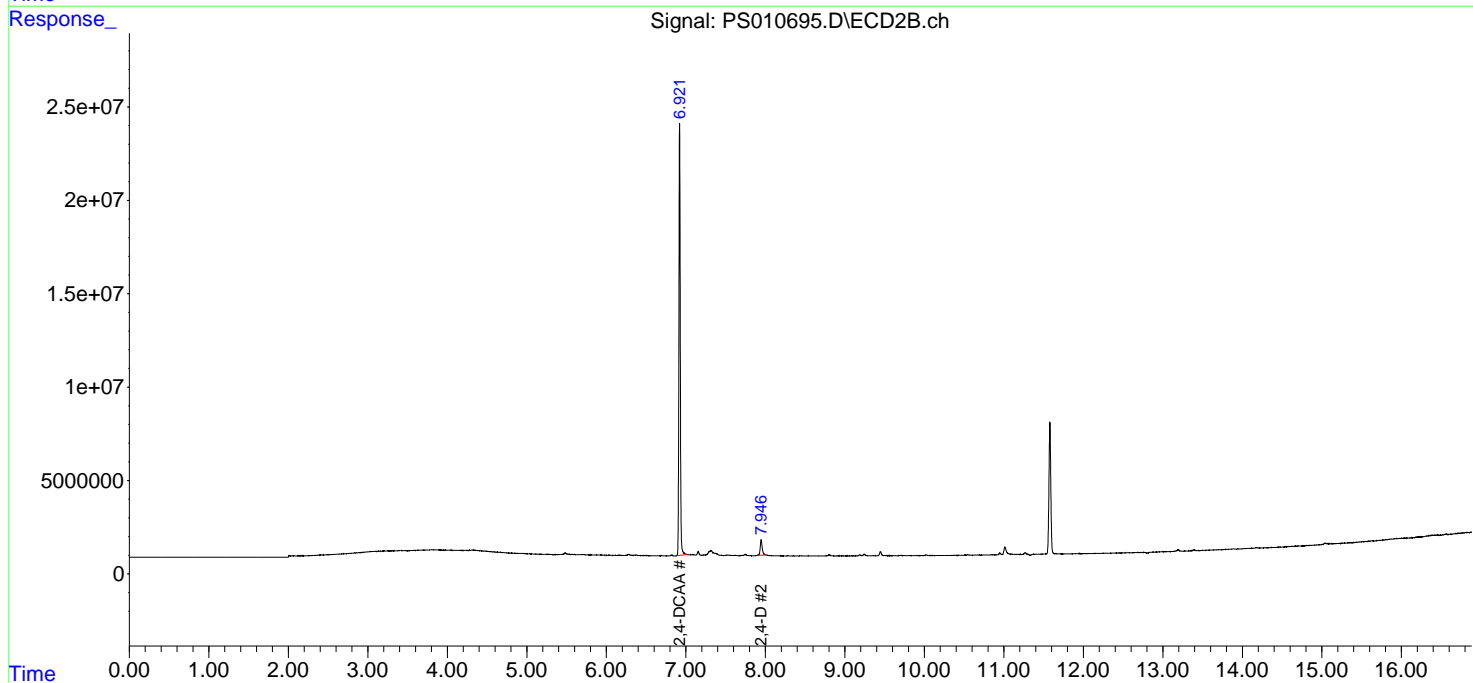
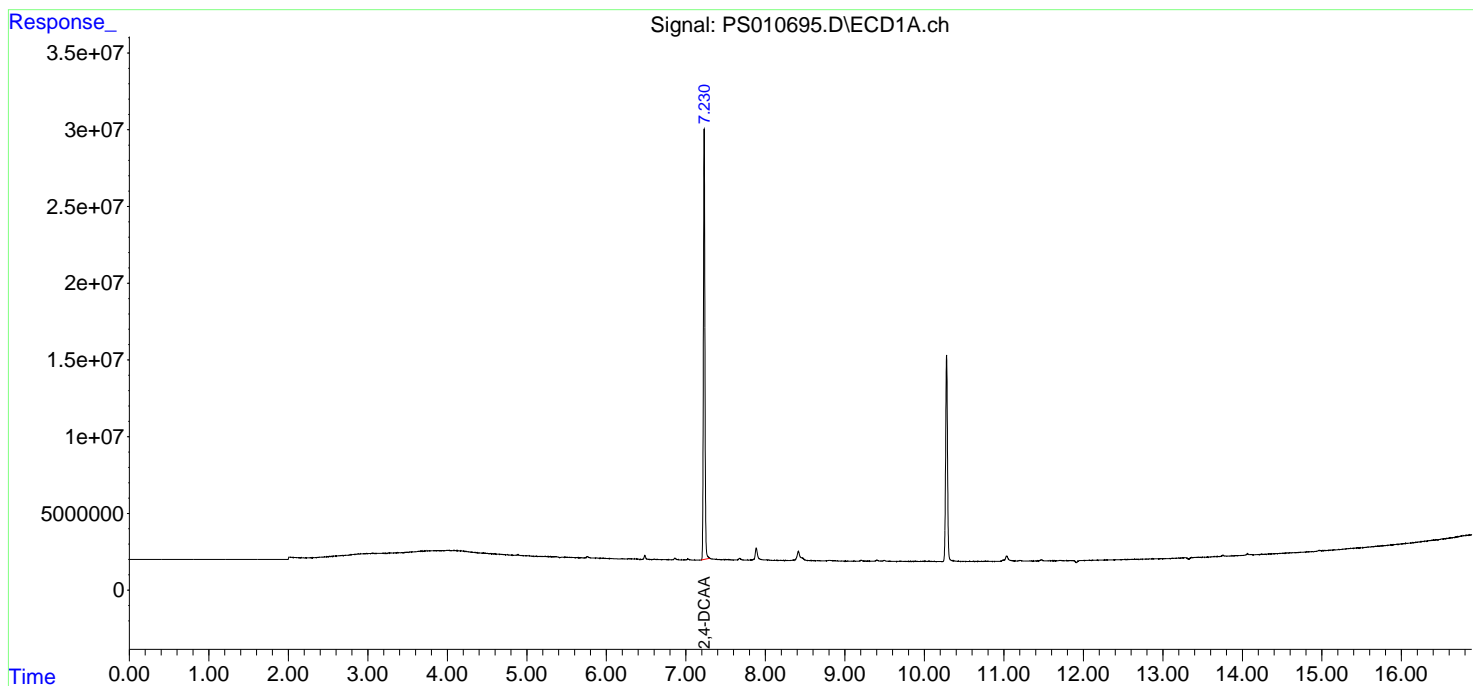
(f)=RT Delta > 1/2 Window (#)=Amounts differ by > 25% (m)=manual int.

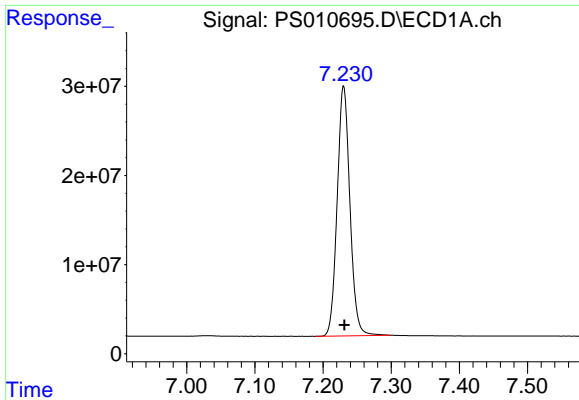
Data Path : Z:\pestpcbsrv\HPCHEM1\ECD_S\Data\PS060520\
Data File : PS010695.D
Signal(s) : Signal #1: ECD1A.ch Signal #2: ECD2B.ch
Acq On : 05 Jun 2020 09:13
Operator : DD\AJ
Sample : I.BLK
Misc :
ALS Vial : 2 Sample Multiplier: 1

Instrument :
ECD_S
ClientSampled :

Integration File signal 1: autoint1.e
Integration File signal 2: autoint2.e
Quant Time: Jun 05 14:26:35 2020
Quant Method : Z:\pestpcbsrv\HPCHEM1\ECD_S\Method\PS052920.M
Quant Title : 8080.M
QLast Update : Fri May 29 15:43:50 2020
Response via : Initial Calibration
Integrator: ChemStation

Volume Inj. : 2 µl
Signal #1 Phase : Rtx-CLPesticides Signal #2 Phase: Rtx-CLPesticides2
Signal #1 Info : 30M x 0.32mm x 0.5 Signal #2 Info : 30M x 0.32mm x 0.25µm

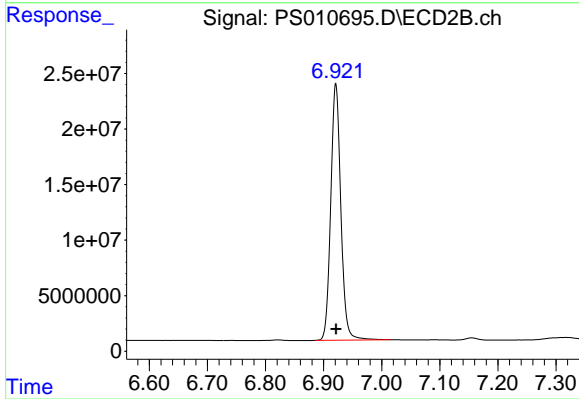




#4 2,4-DCAA

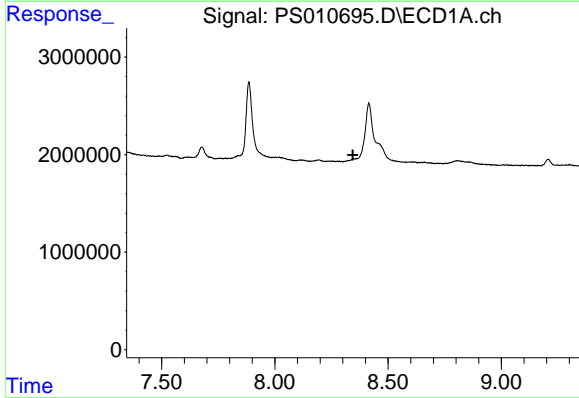
R.T.: 7.230 min
 Delta R.T.: -0.001 min
 Response: 364163878
 Conc: 460.46 ng/ml

Instrument :
 ECD_S
 ClientSampleId :



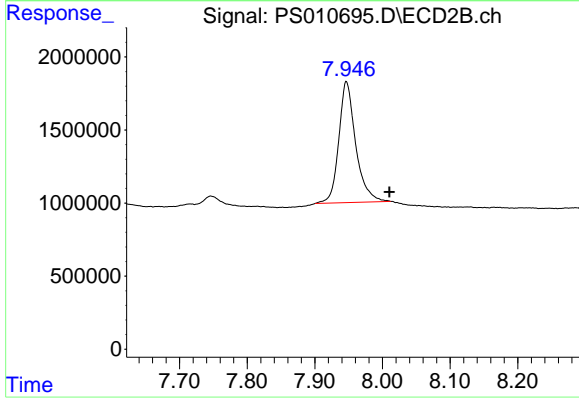
#4 2,4-DCAA

R.T.: 6.921 min
 Delta R.T.: 0.000 min
 Response: 279113986
 Conc: 511.75 ng/ml



#9 2,4-D

R.T.: 0.000 min
 Exp R.T. : 8.345 min
 Response: 0
 Conc: N.D.



#9 2,4-D

R.T.: 7.947 min
 Delta R.T.: -0.064 min
 Response: 14399168
 Conc: 18.99 ng/ml