

Data Path : Z:\pestpcbsrv\HPCHEM1\ECD\_S\Data\PS060623\  
 Data File : PS023227.D  
 Signal(s) : Signal #1: ECD1A.ch Signal #2: ECD2B.ch  
 Acq On : 06 Jun 2023 18:33  
 Operator : AR\AJ  
 Sample : 03046-01  
 Misc :  
 ALS Vial : 8 Sample Multiplier: 1

Instrument :  
 ECD\_S  
 ClientSampleId :

Integration File signal 1: autoint1.e  
 Integration File signal 2: autoint2.e  
 Quant Time: Jun 07 04:18:52 2023  
 Quant Method : Z:\pestpcbsrv\HPCHEM1\ECD\_S\Method\PS060623.M  
 Quant Title : 8080.M  
 QLast Update : Tue Jun 06 13:00:04 2023  
 Response via : Initial Calibration  
 Integrator: ChemStation

Volume Inj. : 2 µl  
 Signal #1 Phase : Rtx-CLPesticides Signal #2 Phase: Rtx-CLPesticides2  
 Signal #1 Info : 30M x 0.32mm x0.5 Signal #2 Info : 30M x 0.32mm x 0.25µm

Compound	RT#1	RT#2	Resp#1	Resp#2	ng/ml	ng/ml
-----						
System Monitoring Compounds						
4) S 2,4-DCAA	6.480	6.856	897.8E6	292.3E6	507.462	514.845
Target Compounds						
1) T Dalapon	2.515	2.538	55913316	68417274	30.578	74.638 #
2) T 3,5-DICHL...	5.861	6.010	-12027751	4739114	N.D.	5.354
3) T 4-Nitroph...	6.317	6.504f	9087892	6505838	7.051	19.070 #
5) T DICAMBA	6.633	7.041	57032536	71420871	7.318	27.869 #
6) T MCPP	6.810	7.135	2727971	7353882	<MDL	4.114 #
7) T MCPA	6.950	7.329	29530753	48362716	3.772	17.995 #
8) T DICHLORPROP	7.256	7.663	11330218	19906296	5.491	32.180 #
9) T 2,4-D	7.432	7.932	9793341	3615432	4.008	5.213 #
10) T Pentachlo...	7.675	8.364	46319937	14138789	1.644	1.563
11) T 2,4,5-TP ...	8.169f	8.677f	45025866	13101451	3.894	3.926
12) T 2,4,5-T	8.455	9.086	23362483	2654143	2.057	<MDL #
13) T 2,4-DB	8.992	9.611	11949093	1736670	5.076	4.684
14) T DINOSEB	10.089	9.963	17774330	41615104	2.146	17.537 #
15) T Picloram	9.882	10.898	68676351	18869268	3.957	4.135
16) T DCPA	10.330	10.862	68357647	21690070	4.904	5.406

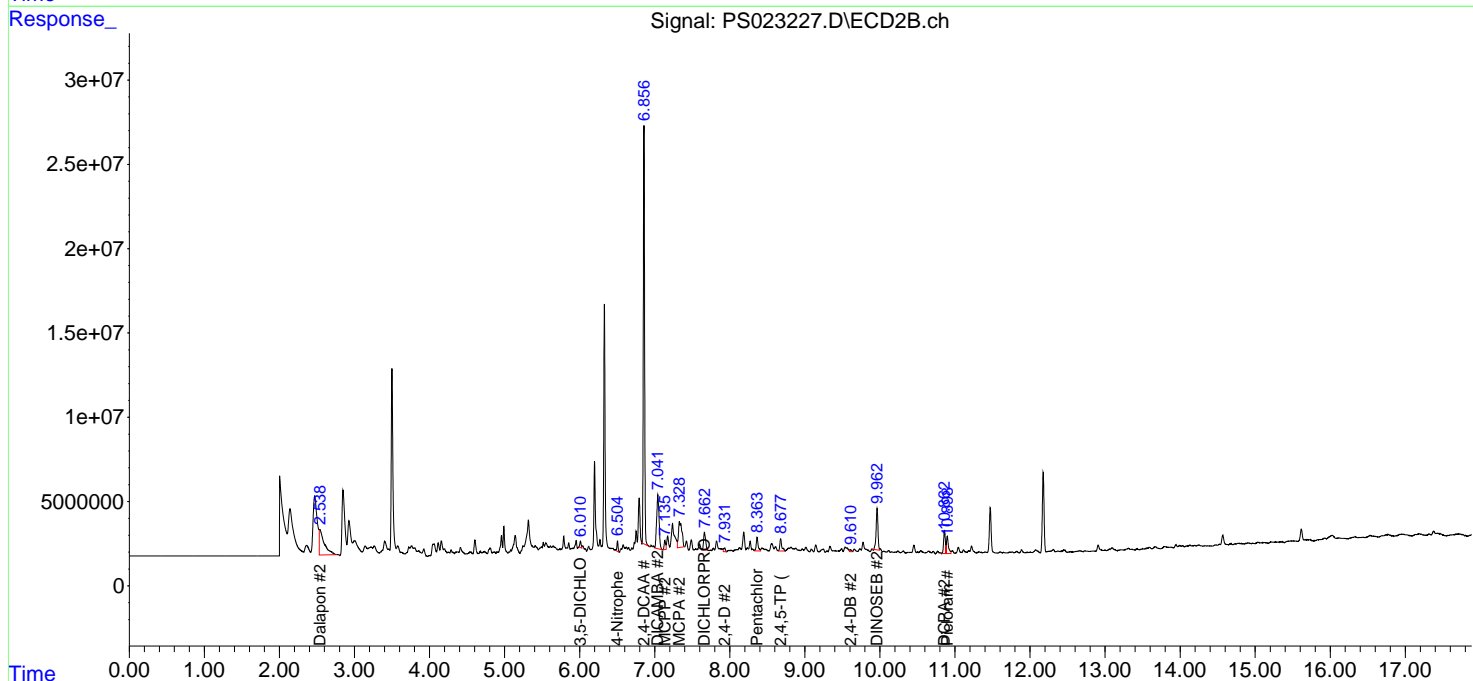
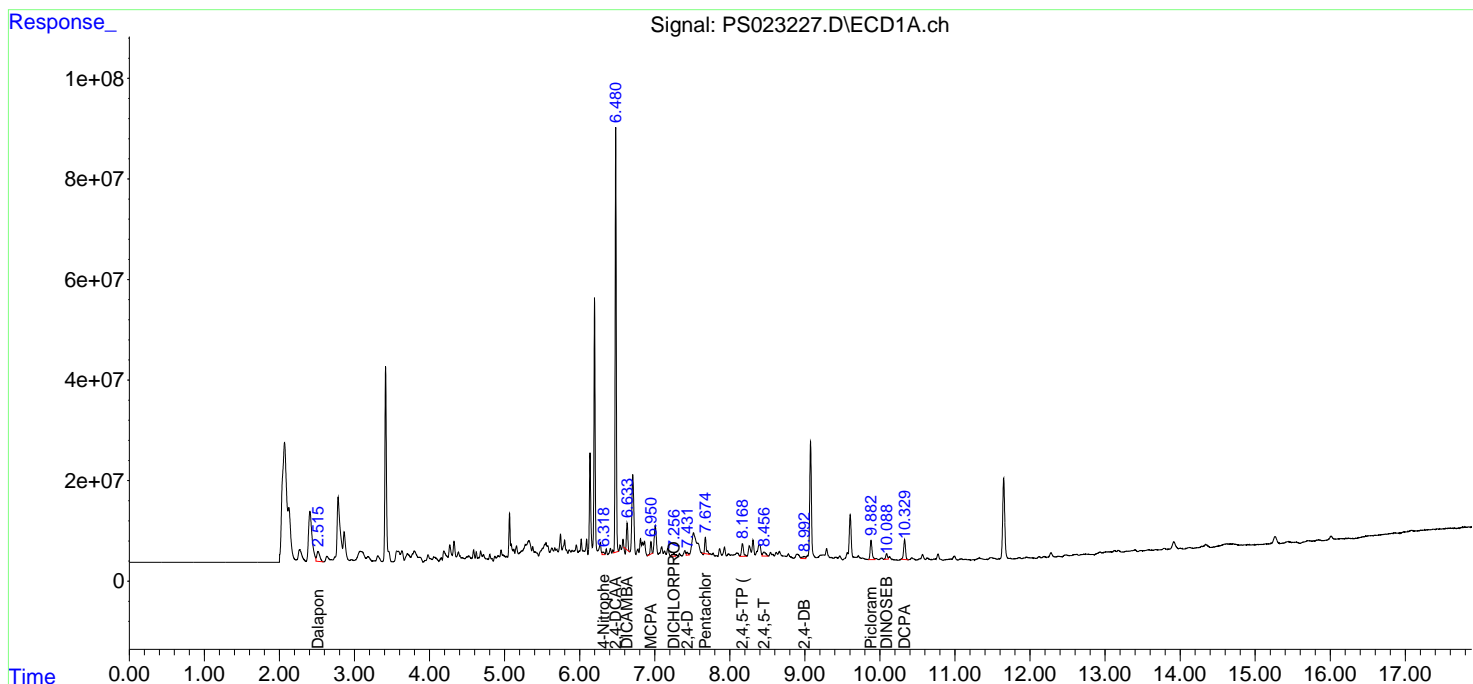
(f)=RT Delta > 1/2 Window (#)=Amounts differ by > 25% (m)=manual int.

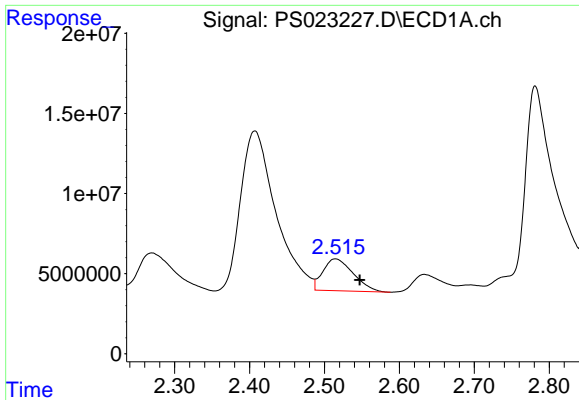
Data Path : Z:\pestpcbsrv\HPCHEM1\ECD\_S\Data\PS060623\  
 Data File : PS023227.D  
 Signal(s) : Signal #1: ECD1A.ch Signal #2: ECD2B.ch  
 Acq On : 06 Jun 2023 18:33  
 Operator : AR\AJ  
 Sample : 03046-01  
 Misc :  
 ALS Vial : 8 Sample Multiplier: 1

Instrument :  
 ECD\_S  
 ClientSampleId :

Integration File signal 1: autoint1.e  
 Integration File signal 2: autoint2.e  
 Quant Time: Jun 07 04:18:52 2023  
 Quant Method : Z:\pestpcbsrv\HPCHEM1\ECD\_S\Method\PS060623.M  
 Quant Title : 8080.M  
 QLast Update : Tue Jun 06 13:00:04 2023  
 Response via : Initial Calibration  
 Integrator: ChemStation

Volume Inj. : 2 µl  
 Signal #1 Phase : Rtx-CLPesticides Signal #2 Phase: Rtx-CLPesticides2  
 Signal #1 Info : 30M x 0.32mm x0.5 Signal #2 Info : 30M x 0.32mm x 0.25µm

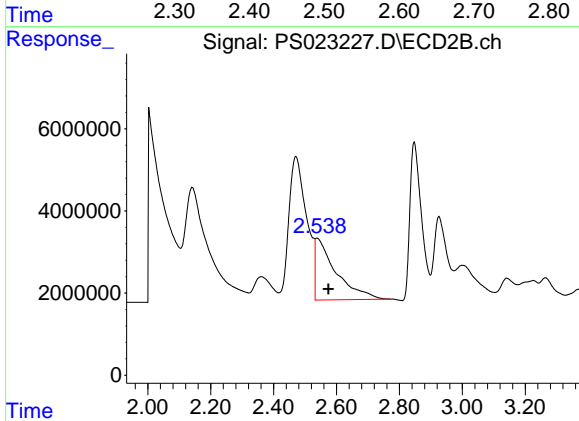




#1 Dalapon

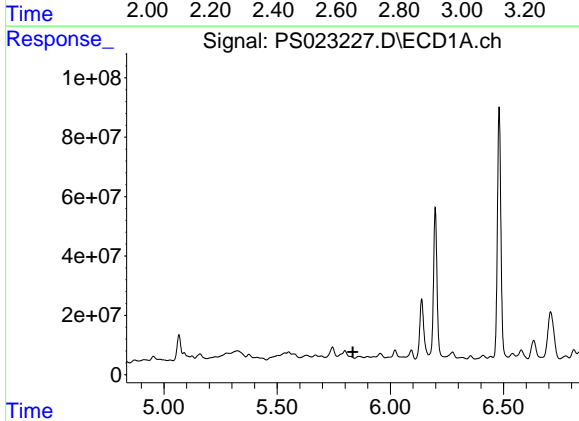
R.T.: 2.515 min  
 Delta R.T.: -0.032 min  
 Response: 55913316  
 Conc: 30.58 ng/ml

Instrument :  
 ECD\_S  
 ClientSampleId :



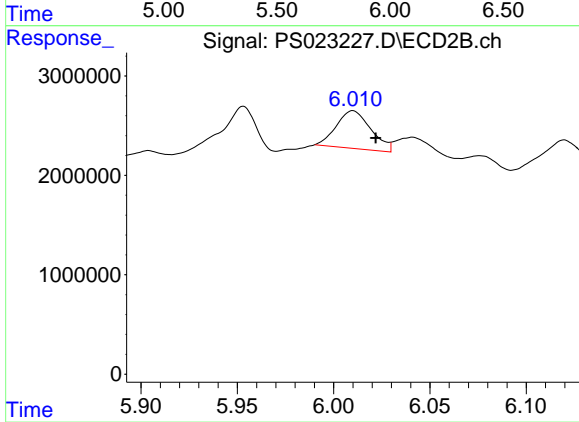
#1 Dalapon

R.T.: 2.538 min  
 Delta R.T.: -0.036 min  
 Response: 68417274  
 Conc: 74.64 ng/ml



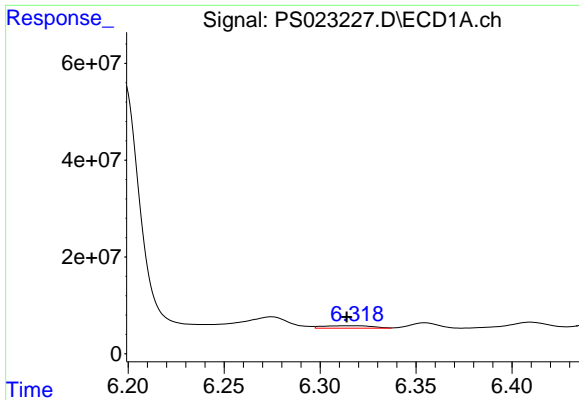
#2 3,5-DICHLOROBENZOIC ACID

R.T.: 5.861 min  
 Delta R.T.: 0.027 min  
 Response: -12027751  
 Conc: N.D.



#2 3,5-DICHLOROBENZOIC ACID

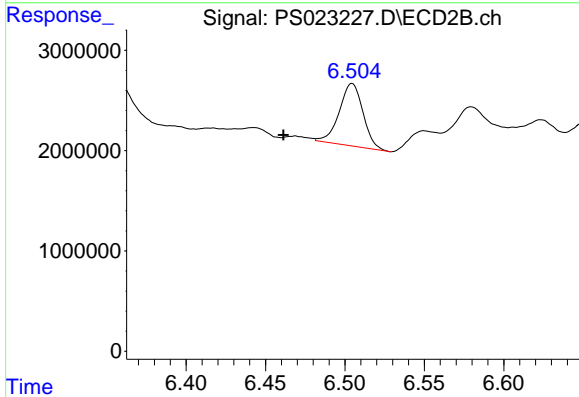
R.T.: 6.010 min  
 Delta R.T.: -0.012 min  
 Response: 4739114  
 Conc: 5.35 ng/ml



#3 4-Nitrophenol

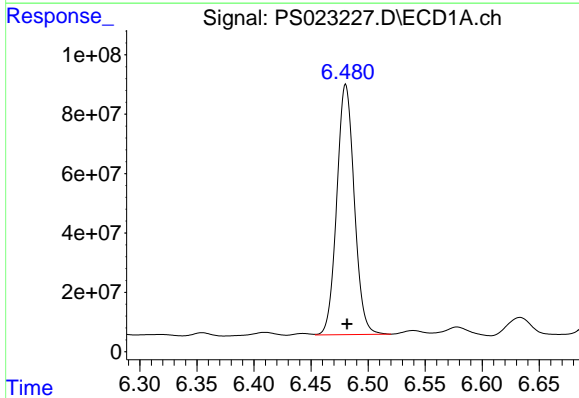
R.T.: 6.317 min  
 Delta R.T.: 0.003 min  
 Response: 9087892  
 Conc: 7.05 ng/ml

Instrument :  
 ECD\_S  
 ClientSampleId :



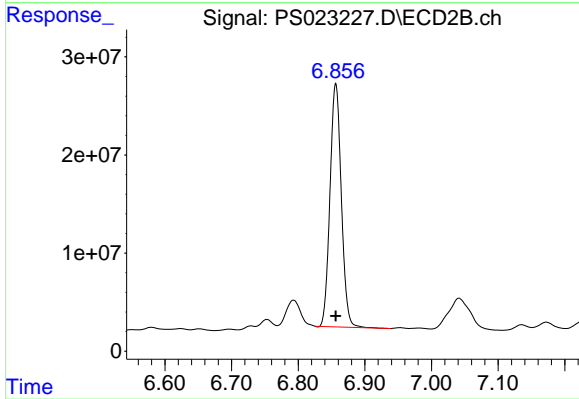
#3 4-Nitrophenol

R.T.: 6.504 min  
 Delta R.T.: 0.043 min  
 Response: 6505838  
 Conc: 19.07 ng/ml



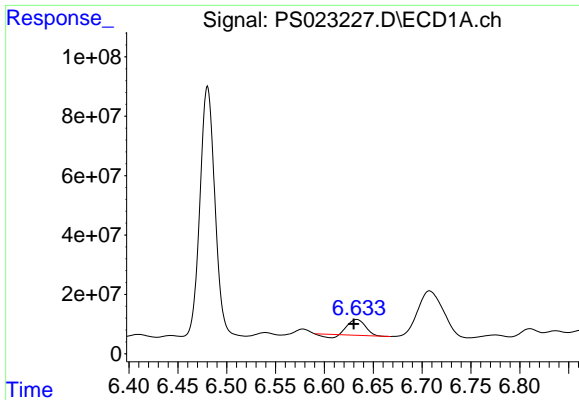
#4 2,4-DCAA

R.T.: 6.480 min  
 Delta R.T.: -0.001 min  
 Response: 897830608  
 Conc: 507.46 ng/ml



#4 2,4-DCAA

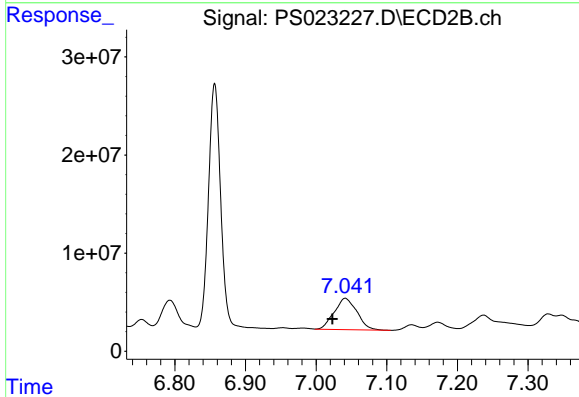
R.T.: 6.856 min  
 Delta R.T.: 0.000 min  
 Response: 292275156  
 Conc: 514.84 ng/ml



#5 DICAMBA

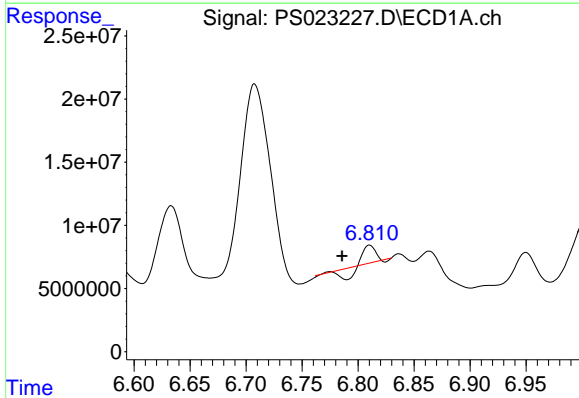
R.T.: 6.633 min  
 Delta R.T.: 0.003 min  
 Response: 57032536  
 Conc: 7.32 ng/ml

Instrument :  
 ECD\_S  
 ClientSampleId :



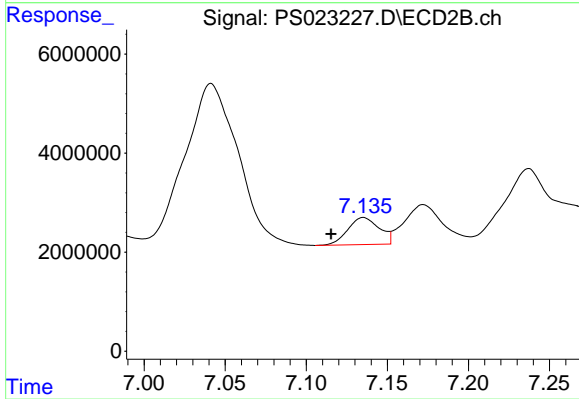
#5 DICAMBA

R.T.: 7.041 min  
 Delta R.T.: 0.018 min  
 Response: 71420871  
 Conc: 27.87 ng/ml



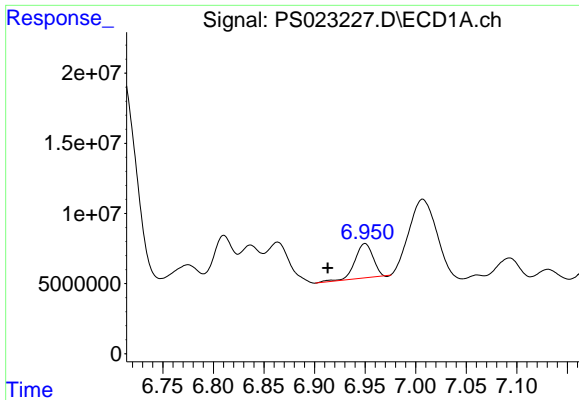
#6 MCPP

R.T.: 6.810 min  
 Delta R.T.: 0.025 min  
 Response: 2727971  
 Conc: N.D.



#6 MCPP

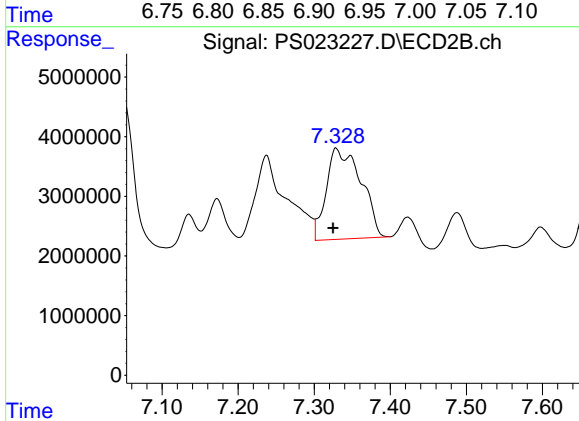
R.T.: 7.135 min  
 Delta R.T.: 0.020 min  
 Response: 7353882  
 Conc: 4.11 ug/ml



#7 MCPA

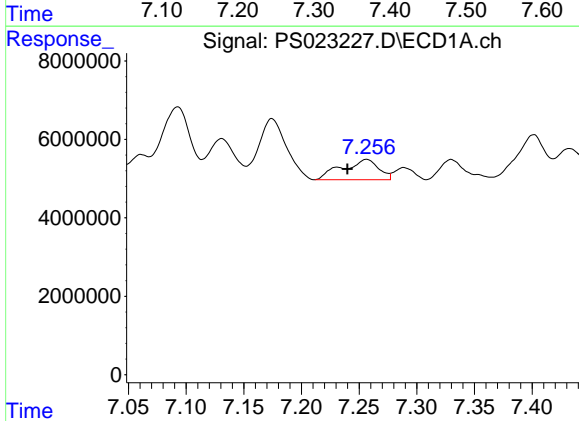
R.T.: 6.950 min  
 Delta R.T.: 0.037 min  
 Response: 29530753  
 Conc: 3.77 ug/ml

Instrument :  
 ECD\_S  
 ClientSampleId :



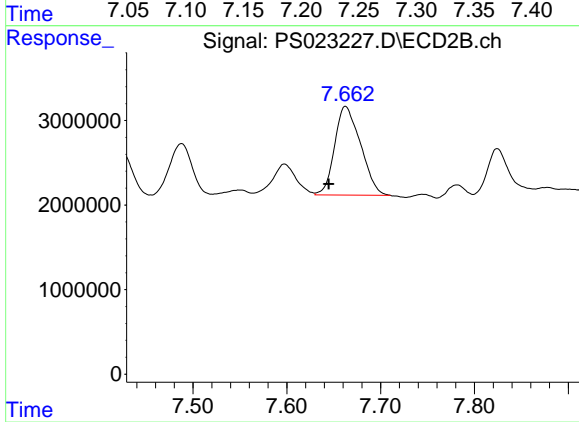
#7 MCPA

R.T.: 7.329 min  
 Delta R.T.: 0.004 min  
 Response: 48362716  
 Conc: 17.99 ug/ml



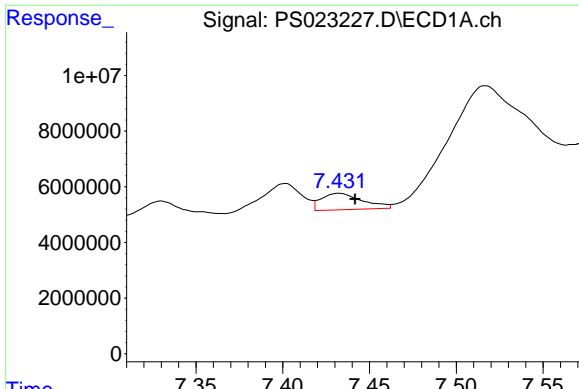
#8 DICHLORPROP

R.T.: 7.256 min  
 Delta R.T.: 0.017 min  
 Response: 11330218  
 Conc: 5.49 ng/ml



#8 DICHLORPROP

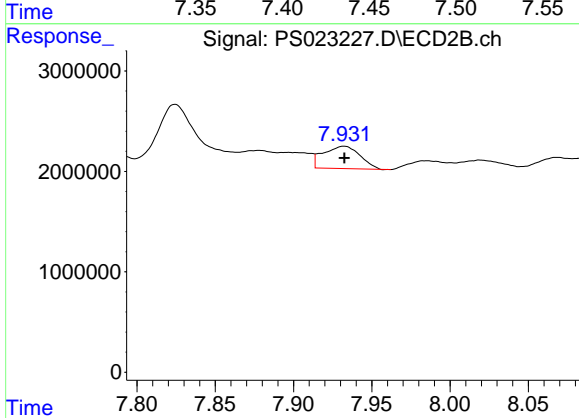
R.T.: 7.663 min  
 Delta R.T.: 0.018 min  
 Response: 19906296  
 Conc: 32.18 ng/ml



#9 2,4-D

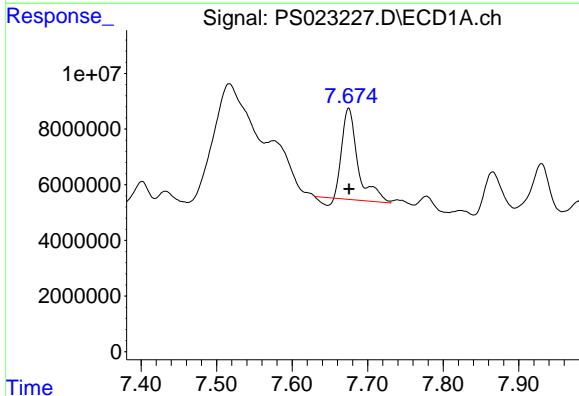
R.T.: 7.432 min  
 Delta R.T.: -0.009 min  
 Response: 9793341  
 Conc: 4.01 ng/ml

Instrument :  
 ECD\_S  
 ClientSampleId :



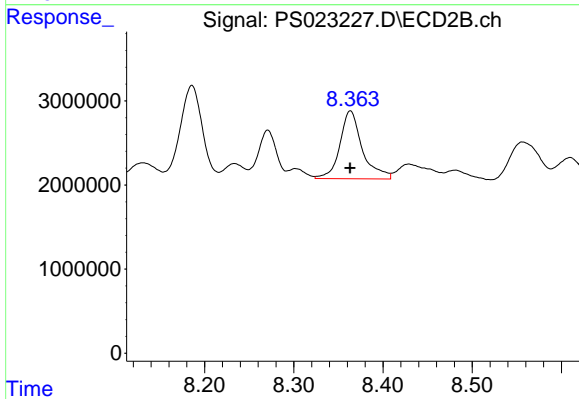
#9 2,4-D

R.T.: 7.932 min  
 Delta R.T.: 0.000 min  
 Response: 3615432  
 Conc: 5.21 ng/ml



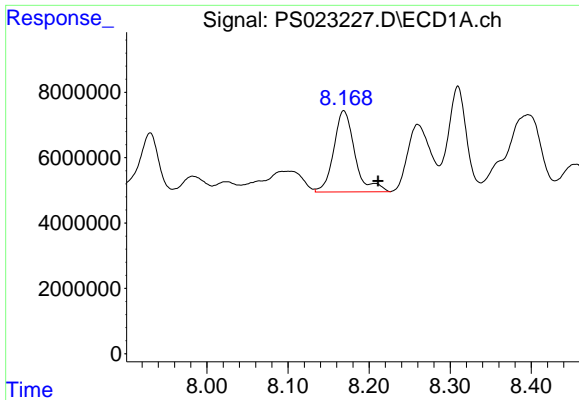
#10 Pentachlorophenol

R.T.: 7.675 min  
 Delta R.T.: 0.000 min  
 Response: 46319937  
 Conc: 1.64 ng/ml



#10 Pentachlorophenol

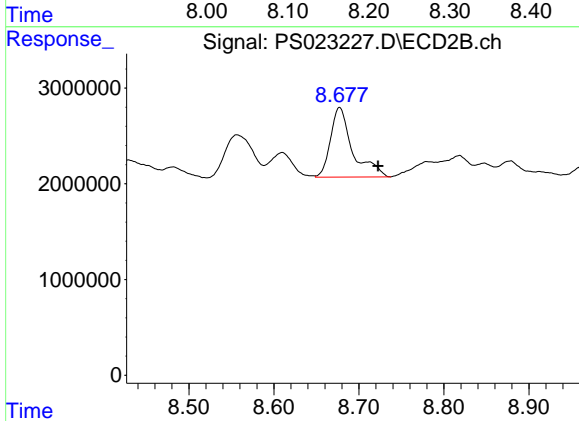
R.T.: 8.364 min  
 Delta R.T.: 0.000 min  
 Response: 14138789  
 Conc: 1.56 ng/ml



#11 2,4,5-TP (SILVEX)

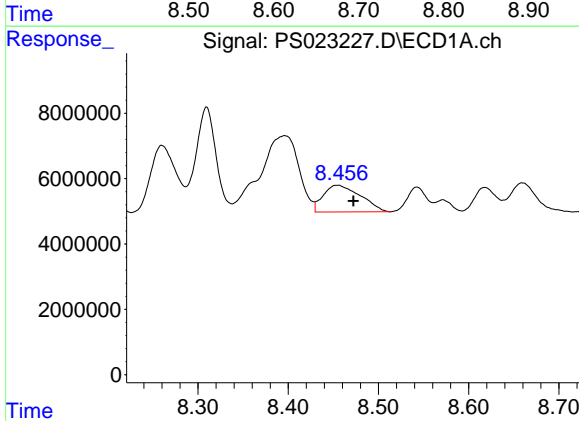
R.T.: 8.169 min  
 Delta R.T.: -0.042 min  
 Response: 45025866  
 Conc: 3.89 ng/ml

Instrument :  
 ECD\_S  
 ClientSampleId :



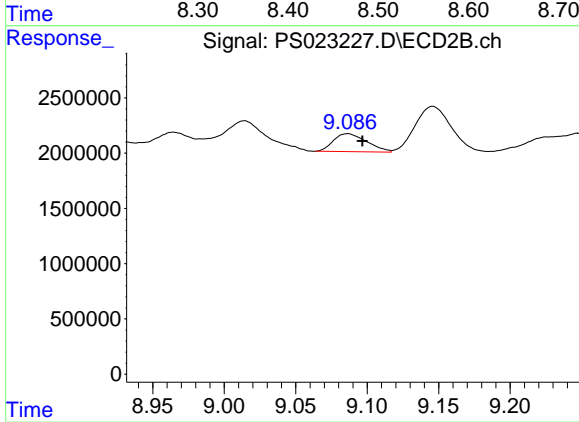
#11 2,4,5-TP (SILVEX)

R.T.: 8.677 min  
 Delta R.T.: -0.045 min  
 Response: 13101451  
 Conc: 3.93 ng/ml



#12 2,4,5-T

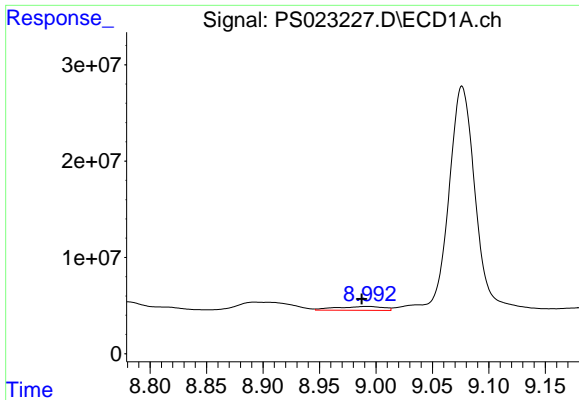
R.T.: 8.455 min  
 Delta R.T.: -0.018 min  
 Response: 23362483  
 Conc: 2.06 ng/ml



#12 2,4,5-T

R.T.: 9.086 min  
 Delta R.T.: -0.010 min  
 Response: 2654143  
 Conc: N.D.

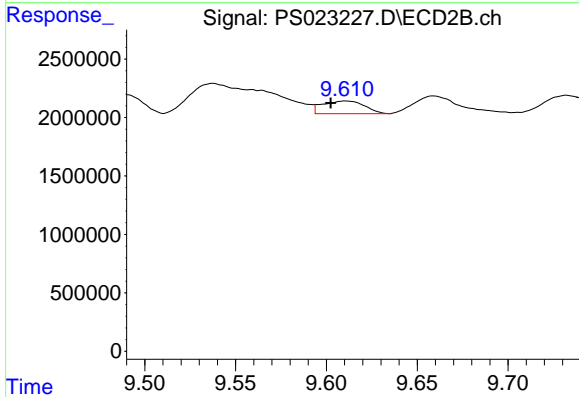




#13 2,4-DB

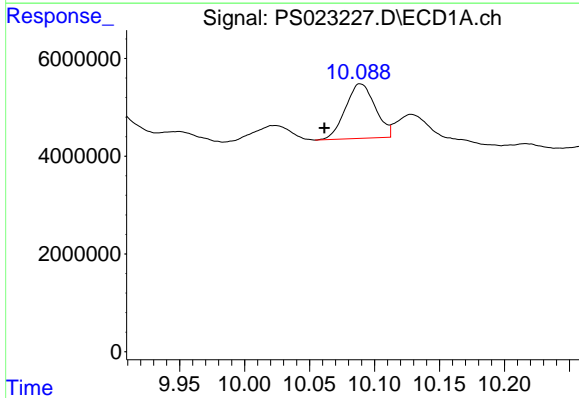
R.T.: 8.992 min  
 Delta R.T.: 0.005 min  
 Response: 11949093  
 Conc: 5.08 ng/ml

Instrument :  
 ECD\_S  
 ClientSampleId :



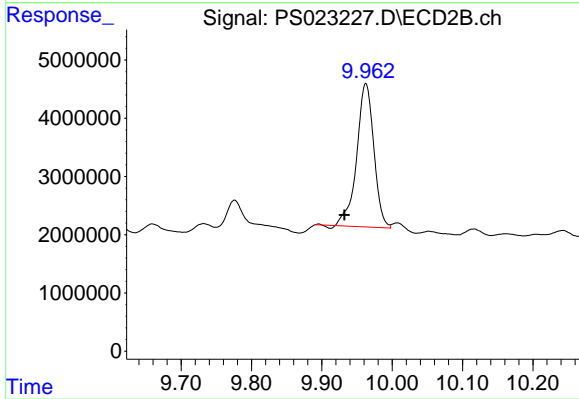
#13 2,4-DB

R.T.: 9.611 min  
 Delta R.T.: 0.008 min  
 Response: 1736670  
 Conc: 4.68 ng/ml



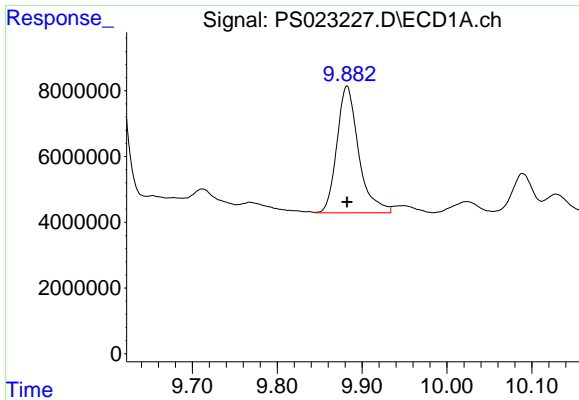
#14 DINOSEB

R.T.: 10.089 min  
 Delta R.T.: 0.028 min  
 Response: 17774330  
 Conc: 2.15 ng/ml



#14 DINOSEB

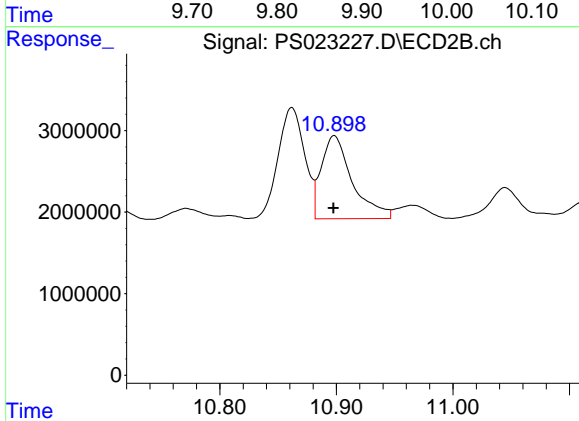
R.T.: 9.963 min  
 Delta R.T.: 0.030 min  
 Response: 41615104  
 Conc: 17.54 ng/ml



#15 Picloram

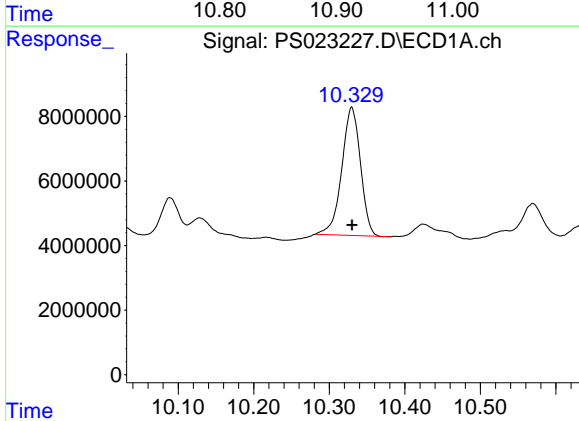
R.T.: 9.882 min  
 Delta R.T.: 0.000 min  
 Response: 68676351  
 Conc: 3.96 ng/ml

Instrument :  
 ECD\_S  
 ClientSampleId :



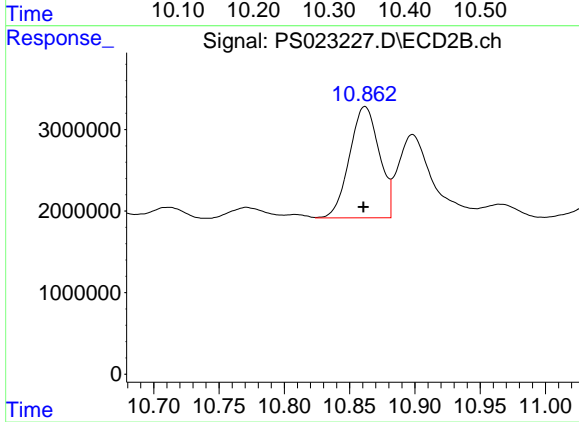
#15 Picloram

R.T.: 10.898 min  
 Delta R.T.: 0.000 min  
 Response: 18869268  
 Conc: 4.13 ng/ml



#16 DCPA

R.T.: 10.330 min  
 Delta R.T.: 0.000 min  
 Response: 68357647  
 Conc: 4.90 ng/ml



#16 DCPA

R.T.: 10.862 min  
 Delta R.T.: 0.001 min  
 Response: 21690070  
 Conc: 5.41 ng/ml