

Data Path : Z:\pestpcbsrv\HPCHEM1\ECD_S\Data\PS060625\
 Data File : PS030542.D
 Signal(s) : Signal #1: ECD1A.ch Signal #2: ECD2B.ch
 Acq On : 06 Jun 2025 21:12
 Operator : AR\AJ
 Sample : Q2227-01
 Misc :
 ALS Vial : 10 Sample Multiplier: 1

Instrument :
 ECD_S
 ClientSampleId :
 TP07-MHH-WC

Integration File signal 1: autoint1.e
 Integration File signal 2: autoint2.e
 Quant Time: Jun 07 01:17:58 2025
 Quant Method : Z:\pestpcbsrv\HPCHEM1\ECD_S\Method\PS060425.M
 Quant Title : 8080.M
 QLast Update : Wed Jun 04 13:21:22 2025
 Response via : Initial Calibration
 Integrator: ChemStation

Volume Inj. : 1 µl
 Signal #1 Phase : ZB-MR2 Signal #2 Phase: ZB-MR2
 Signal #1 Info : 30M x 0.32mm x0.5 Signal #2 Info : 30M x 0.32mm x 0.25µm

Compound	RT#1	RT#2	Resp#1	Resp#2	ng/ml	ng/ml

System Monitoring Compounds						
4) S 2,4-DCAA	7.362	7.771	1075.3E6	292.6E6	284.835	272.038
Target Compounds						
1) T Dalapon	0.000	2.684f	0	1479.7E6	N.D.	540.028
2) T 3,5-DICHL...	6.516	6.725	-10227217	12342089	N.D.	7.890
3) T 4-Nitroph...	7.121f	7.329	70192411	44233947	38.278	28.224 #
5) T DICAMBA	7.573	7.974	11421937	13662997	<MDL	2.121 #
6) T MCPP	7.741	8.074	16845489	4340114	1.701	1.878
7) T MCPA	7.921	8.309	34145288	13455367	2.691	4.360 #
8) T DICHLORPROP	8.312f	8.665f	21317219	32476930	5.859	21.882 #
9) T 2,4-D	8.489	9.036	126.2E6	3501736	34.639	2.227 #
10) T Pentachlo...	8.851	9.537f	23988004	63108295	<MDL	1.746 #
11) T 2,4,5-TP ...	9.408	9.913f	15150734	162.0E6	<MDL	11.810 #
12) T 2,4,5-T	9.697	10.363	9666357	200.2E6	<MDL	15.335 #
13) T 2,4-DB	10.307f	10.967f	575.2E6	5333097	189.427	4.639 #
14) T DINOSEB	11.525	11.326	45747697	498.7E6	3.182	49.626 #
15) T Picloram	11.307	12.428	24998405	36251111	1.250	1.642 #
16) T DCPA	0.000	12.332f	0	77951283	N.D.	3.809

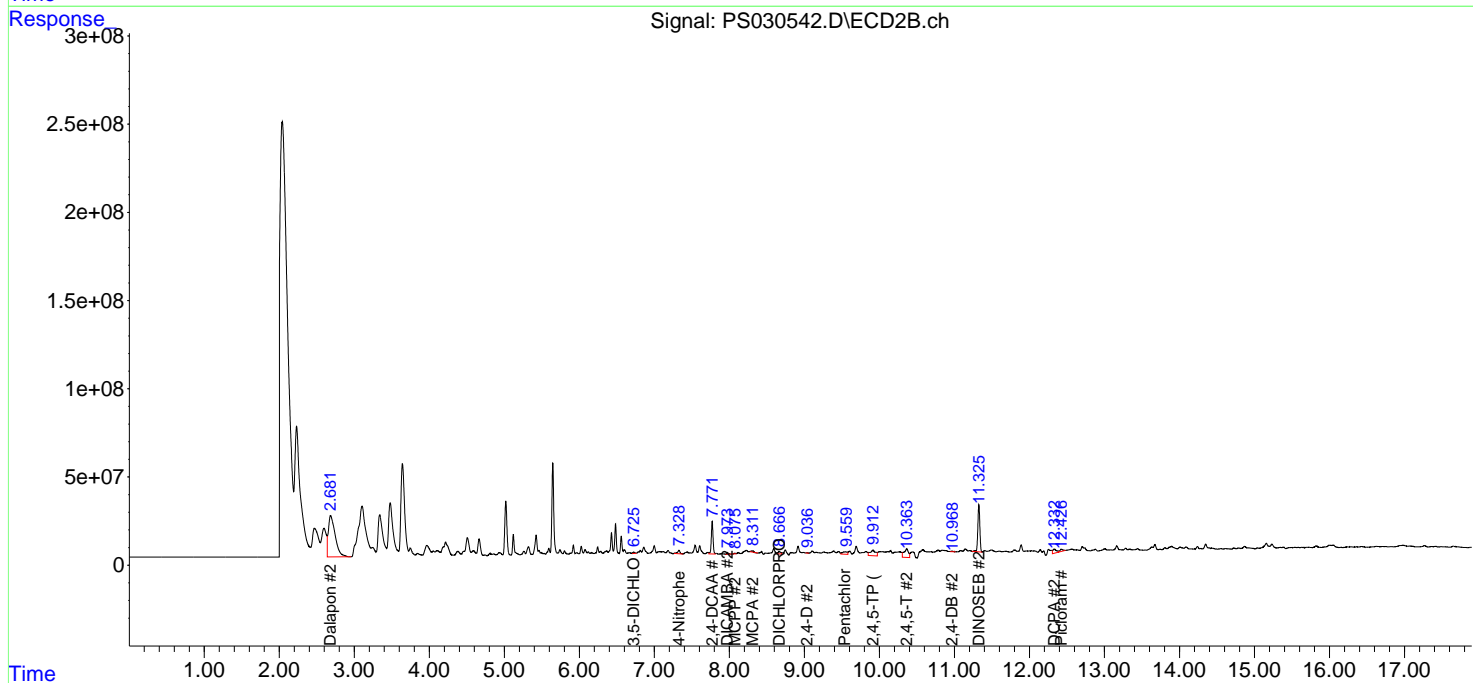
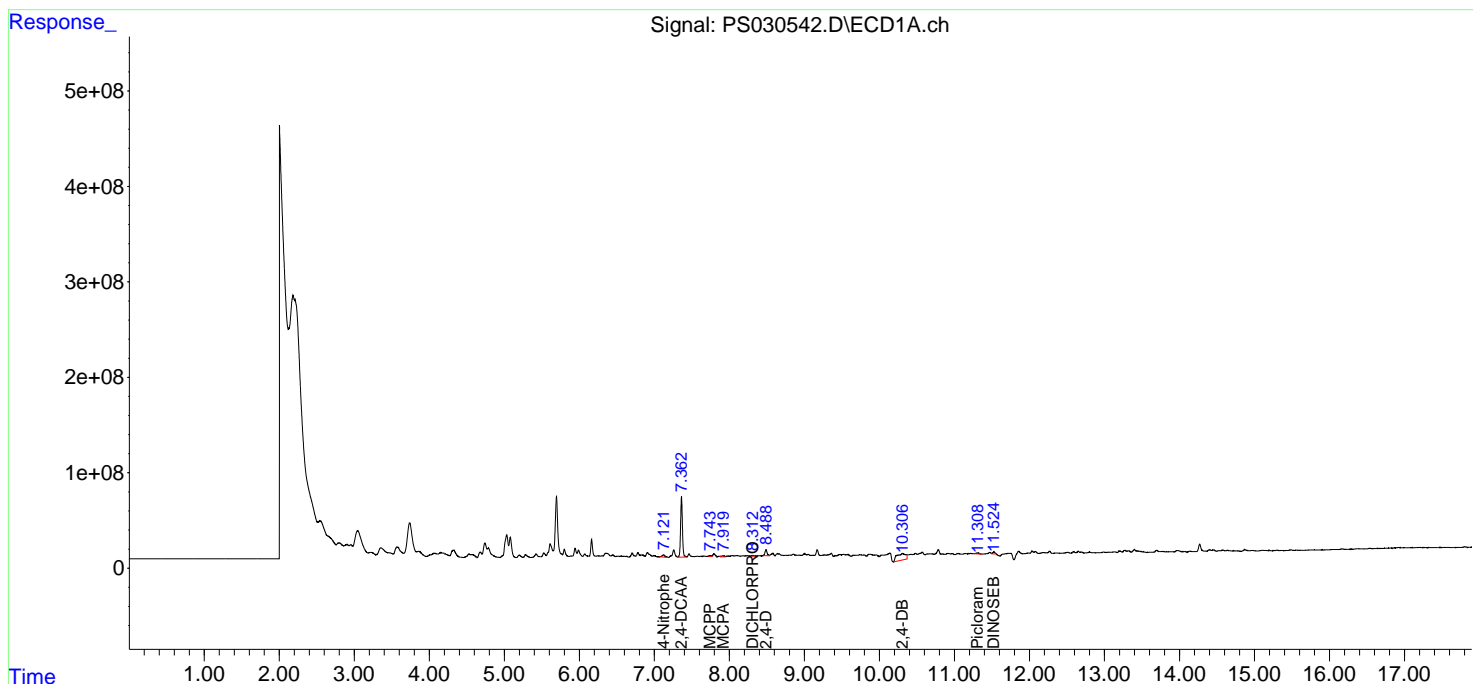
(f)=RT Delta > 1/2 Window (#)=Amounts differ by > 25% (m)=manual int.

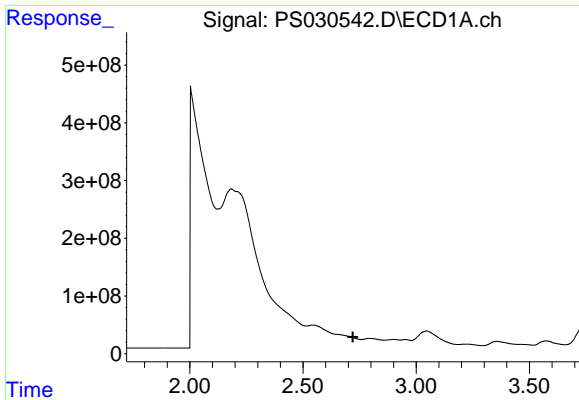
Data Path : Z:\pestpcbsrv\HPCHEM1\ECD_S\Data\PS060625\
 Data File : PS030542.D
 Signal(s) : Signal #1: ECD1A.ch Signal #2: ECD2B.ch
 Acq On : 06 Jun 2025 21:12
 Operator : AR\AJ
 Sample : Q2227-01
 Misc :
 ALS Vial : 10 Sample Multiplier: 1

Instrument :
 ECD_S
 ClientSampleId :
 TP07-MHH-WC

Integration File signal 1: autoint1.e
 Integration File signal 2: autoint2.e
 Quant Time: Jun 07 01:17:58 2025
 Quant Method : Z:\pestpcbsrv\HPCHEM1\ECD_S\Method\PS060425.M
 Quant Title : 8080.M
 QLast Update : Wed Jun 04 13:21:22 2025
 Response via : Initial Calibration
 Integrator: ChemStation

Volume Inj. : 1 µl
 Signal #1 Phase : ZB-MR1 Signal #2 Phase: ZB-MR2
 Signal #1 Info : 30M x 0.32mm x0.5 Signal #2 Info : 30M x 0.32mm x 0.25µm

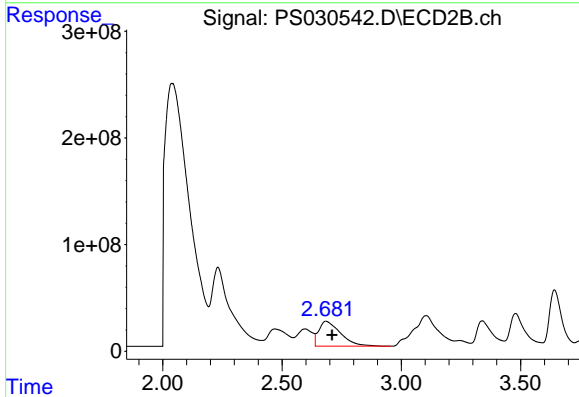




#1 Dalapon

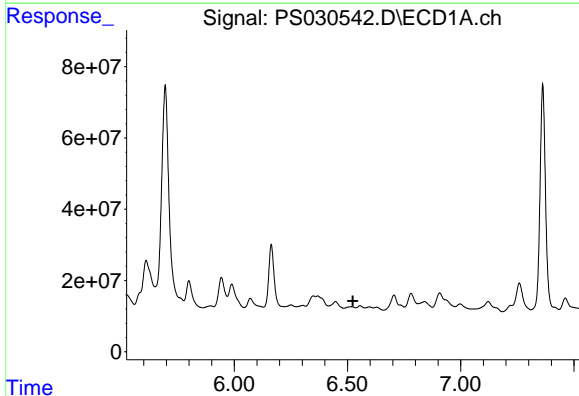
R.T.: 0.000 min
 Exp R.T.: 2.720 min
 Response: 0
 Conc: N.D.

Instrument :
 ECD_S
 ClientSampleId :
 TP07-MHH-WC



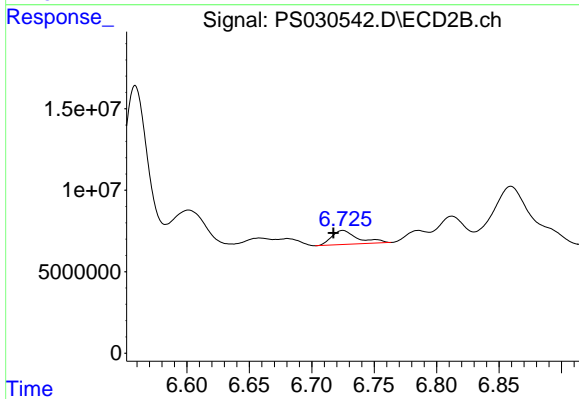
#1 Dalapon

R.T.: 2.684 min
 Delta R.T.: -0.027 min
 Response: 1479684455
 Conc: 540.03 ng/ml



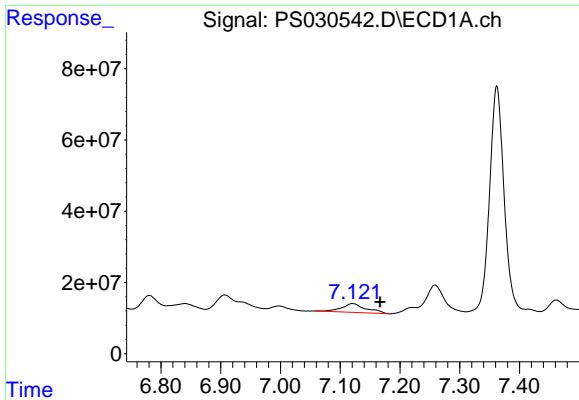
#2 3,5-DICHLOROBENZOIC ACID

R.T.: 6.516 min
 Delta R.T.: -0.008 min
 Response: -10227217
 Conc: N.D.



#2 3,5-DICHLOROBENZOIC ACID

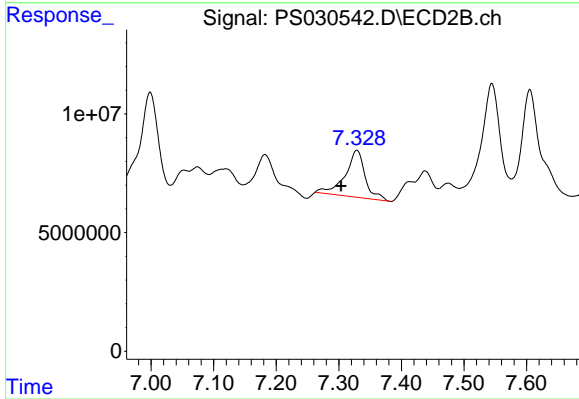
R.T.: 6.725 min
 Delta R.T.: 0.008 min
 Response: 12342089
 Conc: 7.89 ng/ml



#3 4-Nitrophenol

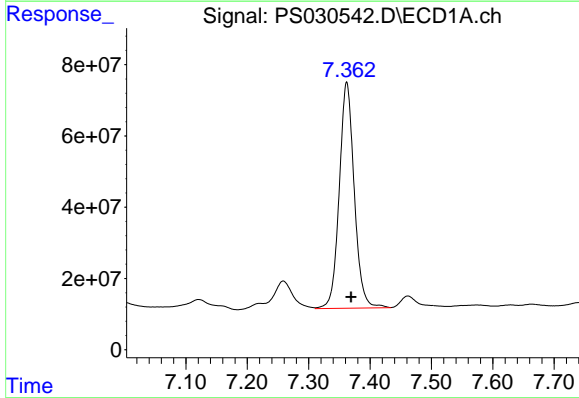
R.T.: 7.121 min
 Delta R.T.: -0.046 min
 Response: 70192411
 Conc: 38.28 ng/ml

Instrument :
 ECD_S
 ClientSampleId :
 TP07-MHH-WC



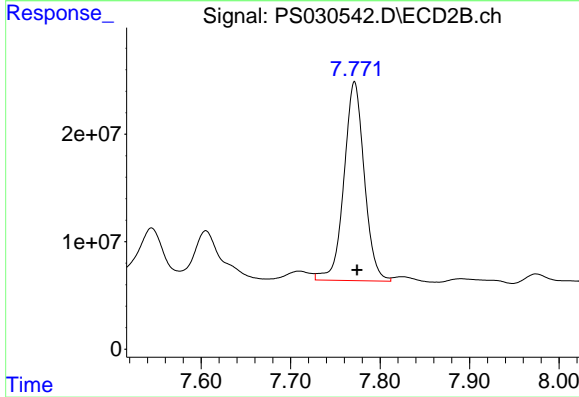
#3 4-Nitrophenol

R.T.: 7.329 min
 Delta R.T.: 0.025 min
 Response: 44233947
 Conc: 28.22 ng/ml



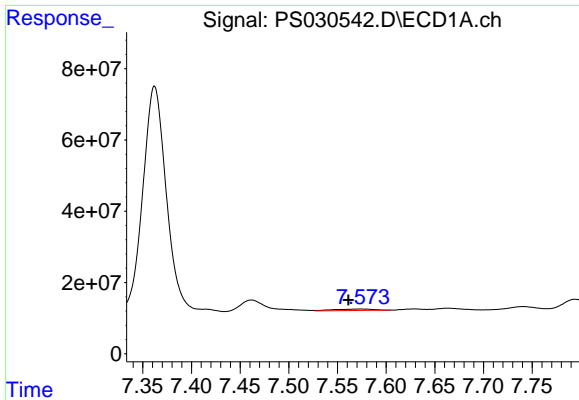
#4 2,4-DCAA

R.T.: 7.362 min
 Delta R.T.: -0.007 min
 Response: 1075292255
 Conc: 284.83 ng/ml



#4 2,4-DCAA

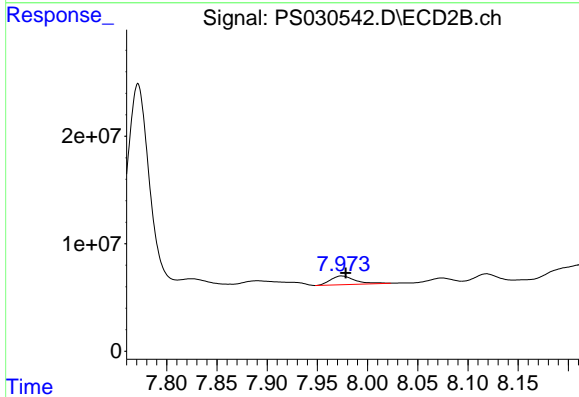
R.T.: 7.771 min
 Delta R.T.: -0.003 min
 Response: 292606722
 Conc: 272.04 ng/ml



#5 DICAMBA

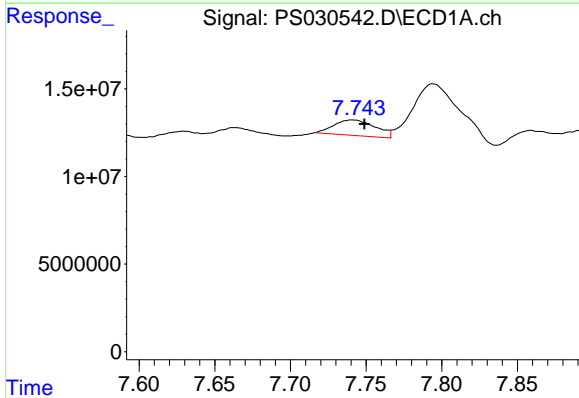
R.T.: 7.573 min
 Delta R.T.: 0.012 min
 Response: 11421937
 Conc: N.D.

Instrument :
 ECD_S
 ClientSampleId :
 TP07-MHH-WC



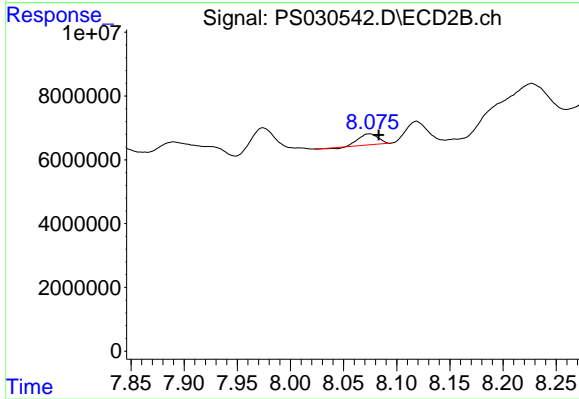
#5 DICAMBA

R.T.: 7.974 min
 Delta R.T.: -0.004 min
 Response: 13662997
 Conc: 2.12 ng/ml



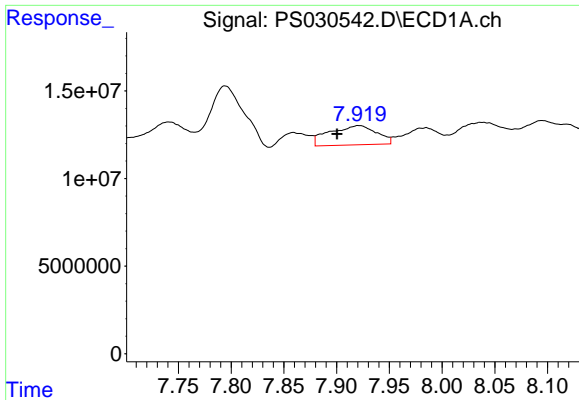
#6 MCP

R.T.: 7.741 min
 Delta R.T.: -0.008 min
 Response: 16845489
 Conc: 1.70 ug/ml



#6 MCP

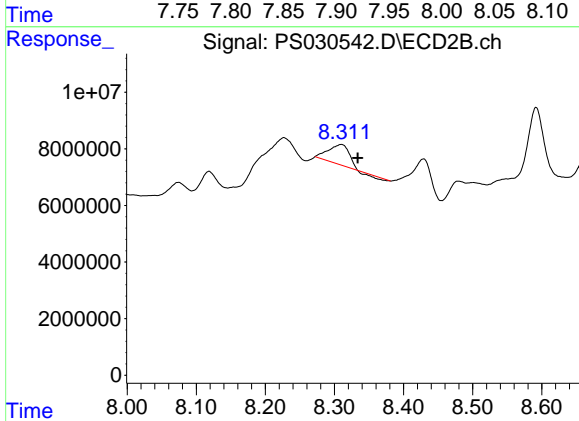
R.T.: 8.074 min
 Delta R.T.: -0.009 min
 Response: 4340114
 Conc: 1.88 ug/ml



#7 MCPA

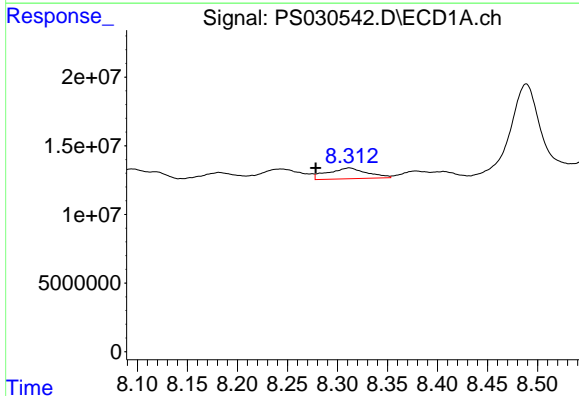
R.T.: 7.921 min
 Delta R.T.: 0.021 min
 Response: 34145288
 Conc: 2.69 ug/ml

Instrument :
 ECD_S
 ClientSampleId :
 TP07-MHH-WC



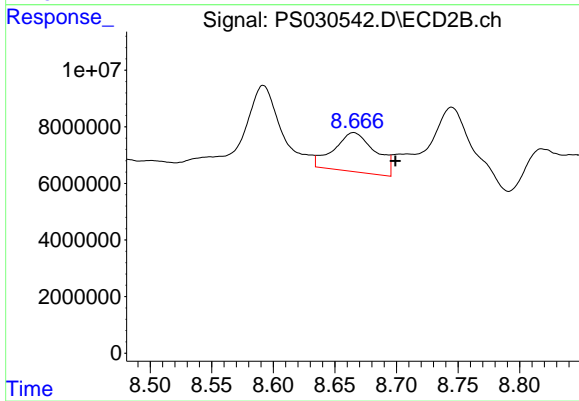
#7 MCPA

R.T.: 8.309 min
 Delta R.T.: -0.024 min
 Response: 13455367
 Conc: 4.36 ug/ml



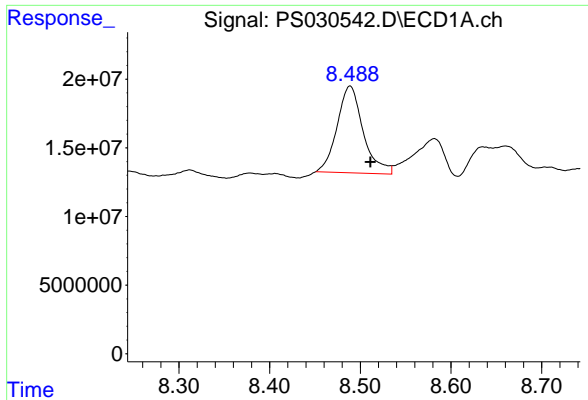
#8 DICHLORPROP

R.T.: 8.312 min
 Delta R.T.: 0.034 min
 Response: 21317219
 Conc: 5.86 ng/ml



#8 DICHLORPROP

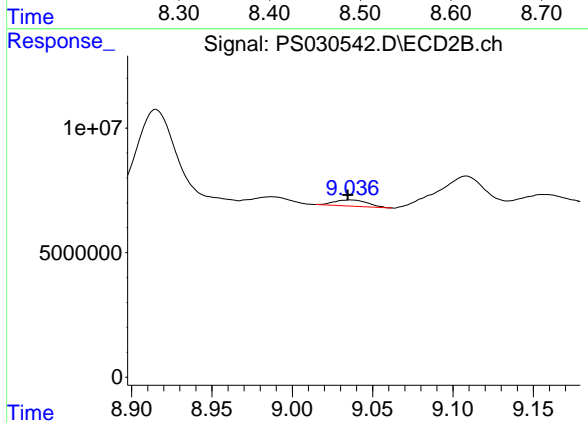
R.T.: 8.665 min
 Delta R.T.: -0.034 min
 Response: 32476930
 Conc: 21.88 ng/ml



#9 2,4-D

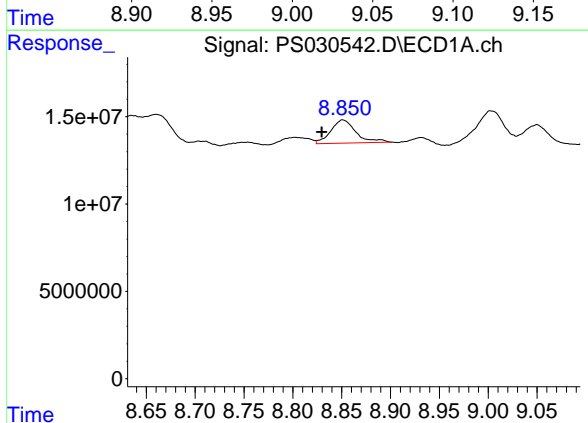
R.T.: 8.489 min
 Delta R.T.: -0.022 min
 Response: 126212733
 Conc: 34.64 ng/ml

Instrument :
 ECD_S
 ClientSampleId :
 TP07-MHH-WC



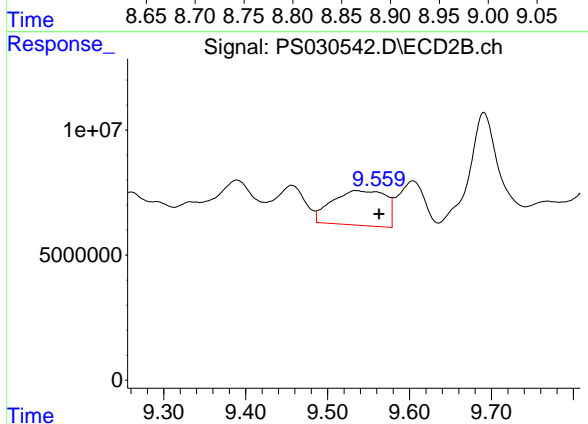
#9 2,4-D

R.T.: 9.036 min
 Delta R.T.: 0.001 min
 Response: 3501736
 Conc: 2.23 ng/ml



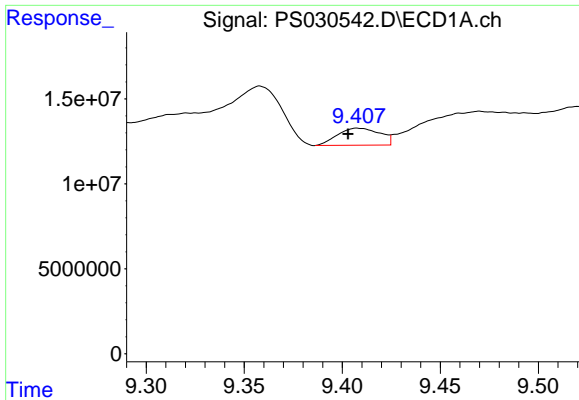
#10 Pentachlorophenol

R.T.: 8.851 min
 Delta R.T.: 0.022 min
 Response: 23988004
 Conc: N.D.



#10 Pentachlorophenol

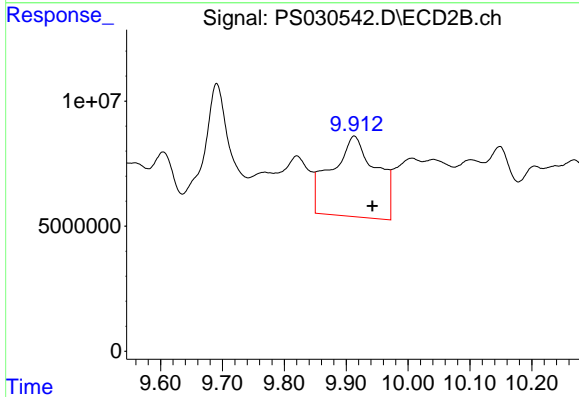
R.T.: 9.537 min
 Delta R.T.: -0.026 min
 Response: 63108295
 Conc: 1.75 ng/ml



#11 2,4,5-TP (SILVEX)

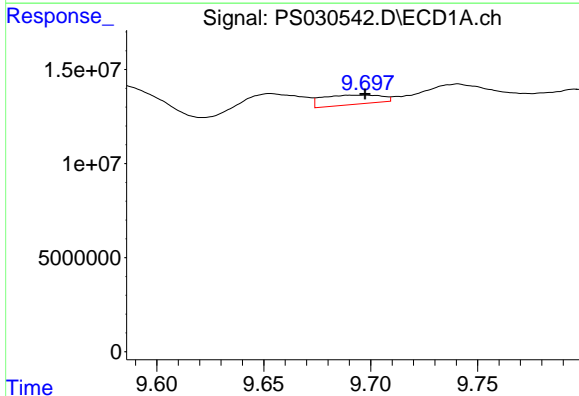
R.T.: 9.408 min
 Delta R.T.: 0.005 min
 Response: 15150734
 Conc: N.D.

Instrument :
 ECD_S
 ClientSampleId :
 TP07-MHH-WC



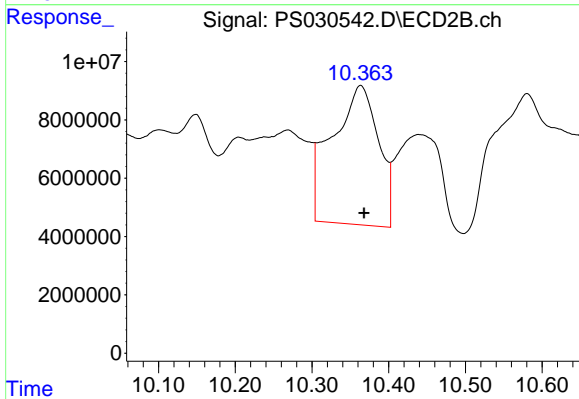
#11 2,4,5-TP (SILVEX)

R.T.: 9.913 min
 Delta R.T.: -0.029 min
 Response: 161997550
 Conc: 11.81 ng/ml



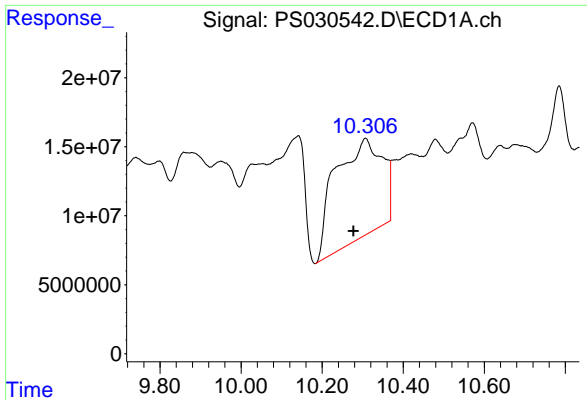
#12 2,4,5-T

R.T.: 9.697 min
 Delta R.T.: 0.000 min
 Response: 9666357
 Conc: N.D.



#12 2,4,5-T

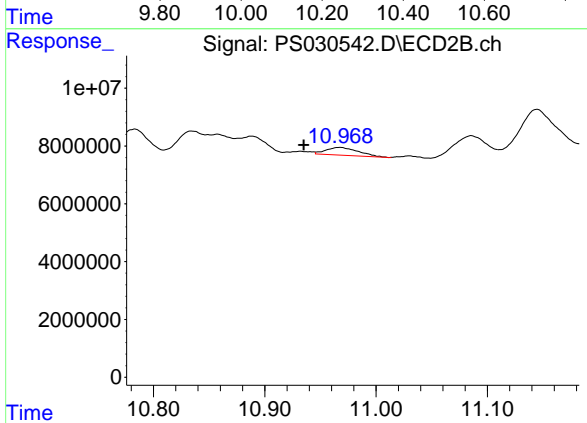
R.T.: 10.363 min
 Delta R.T.: -0.004 min
 Response: 200235360
 Conc: 15.34 ng/ml



#13 2,4-DB

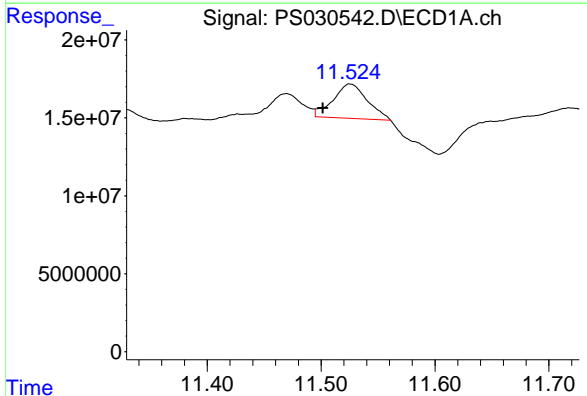
R.T.: 10.307 min
 Delta R.T.: 0.029 min
 Response: 575170313
 Conc: 189.43 ng/ml

Instrument :
 ECD_S
 ClientSampleId :
 TP07-MHH-WC



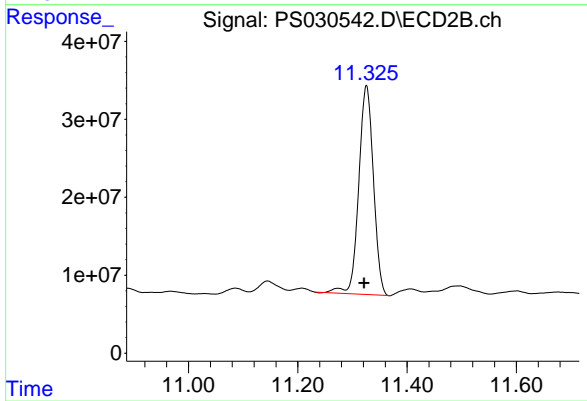
#13 2,4-DB

R.T.: 10.967 min
 Delta R.T.: 0.032 min
 Response: 5333097
 Conc: 4.64 ng/ml



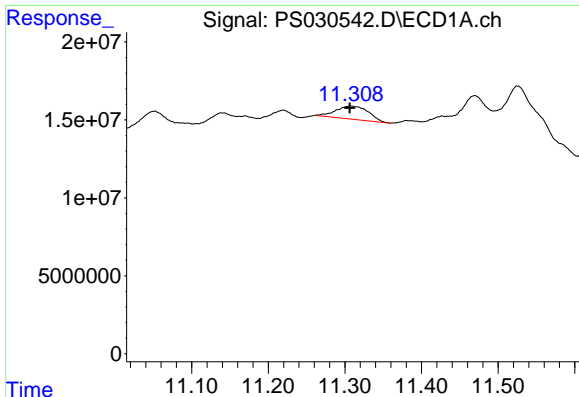
#14 DINOSEB

R.T.: 11.525 min
 Delta R.T.: 0.024 min
 Response: 45747697
 Conc: 3.18 ng/ml



#14 DINOSEB

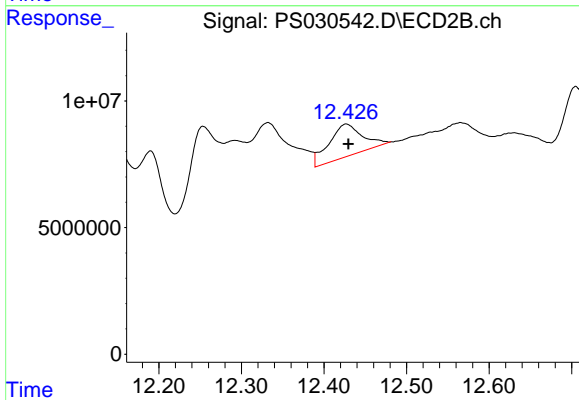
R.T.: 11.326 min
 Delta R.T.: 0.004 min
 Response: 498749670
 Conc: 49.63 ng/ml



#15 Picloram

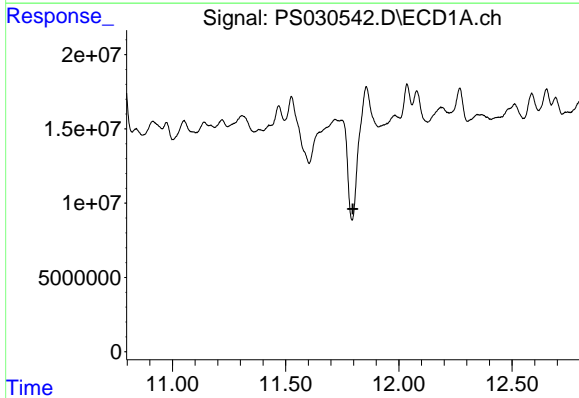
R.T.: 11.307 min
 Delta R.T.: 0.000 min
 Response: 24998405
 Conc: 1.25 ng/ml

Instrument :
 ECD_S
 ClientSampleId :
 TP07-MHH-WC



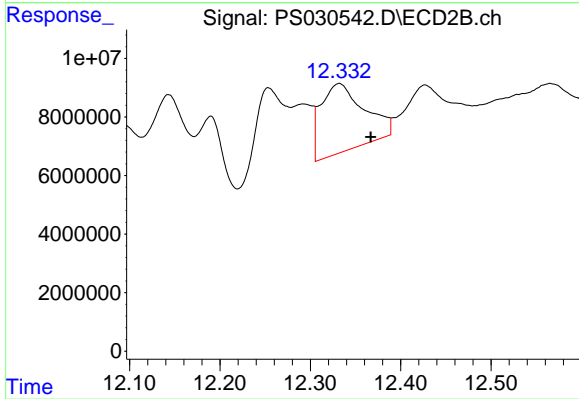
#15 Picloram

R.T.: 12.428 min
 Delta R.T.: -0.002 min
 Response: 36251111
 Conc: 1.64 ng/ml



#16 DCPA

R.T.: 0.000 min
 Exp R.T. : 11.797 min
 Response: 0
 Conc: N.D.



#16 DCPA

R.T.: 12.332 min
 Delta R.T.: -0.035 min
 Response: 77951283
 Conc: 3.81 ng/ml