

Data Path : Z:\pestpcbsrv\HPCHEM1\ECD\_S\Data\PS060821\  
 Data File : PS015285.D  
 Signal(s) : Signal #1: ECD1A.ch Signal #2: ECD2B.ch  
 Acq On : 08 Jun 2021 10:29  
 Operator : DD\AJ  
 Sample : HEXANE  
 Misc :  
 ALS Vial : 1 Sample Multiplier: 1

Instrument :  
 ECD\_S  
 ClientSampleId :

Integration File signal 1: autoint1.e  
 Integration File signal 2: autoint2.e  
 Quant Time: Jun 09 04:09:04 2021  
 Quant Method : Z:\pestpcbsrv\HPCHEM1\ECD\_S\Method\PS052821.M  
 Quant Title : 8080.M  
 QLast Update : Fri May 28 14:34:22 2021  
 Response via : Initial Calibration  
 Integrator: ChemStation

Volume Inj. : 2 µl  
 Signal #1 Phase : Rtx-CLPesticides Signal #2 Phase: Rtx-CLPesticides2  
 Signal #1 Info : 30M x 0.32mm x0.5 Signal #2 Info : 30M x 0.32mm x 0.25µm

| Compound | RT#1 | RT#2 | Resp#1 | Resp#2 | ng/ml | ng/ml |
|----------|------|------|--------|--------|-------|-------|
|----------|------|------|--------|--------|-------|-------|

System Monitoring Compounds

Target Compounds

|       |          |        |        |          |          |        |        |   |
|-------|----------|--------|--------|----------|----------|--------|--------|---|
| 9) T  | 2,4-D    | 8.344  | 0.000  | 6087297  | 0        | 2.389  | N.D.   | # |
| 12) T | 2,4,5-T  | 9.487  | 9.079f | 5144249  | 10247661 | <MDL   | 3.540  | # |
| 13) T | 2,4-DB   | 9.996f | 0.000  | 44561777 | 0        | 17.499 | N.D.   | # |
| 15) T | Picloram | 11.016 | 10.843 | 246.2E6  | 63073170 | 14.861 | 15.188 |   |
| 16) T | DCPA     | 0.000  | 10.843 | 0        | 63073170 | N.D.   | 14.631 |   |

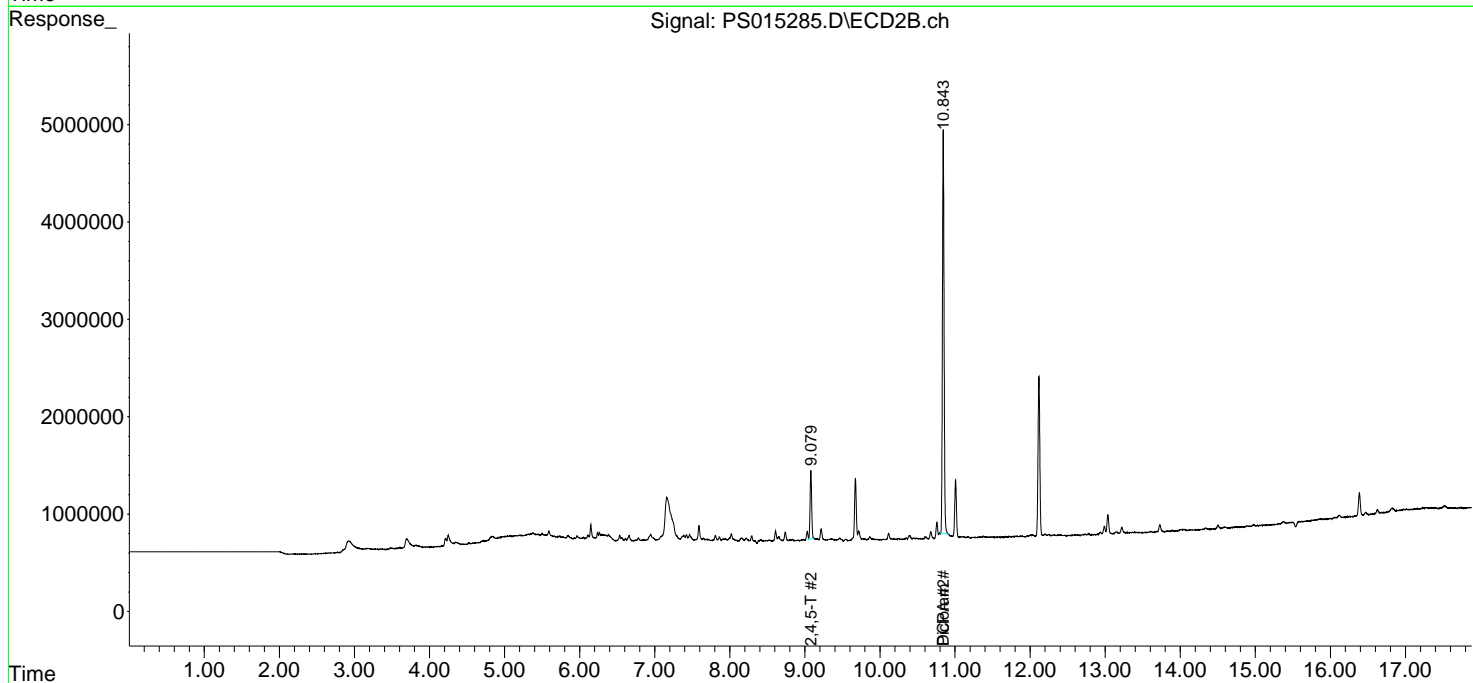
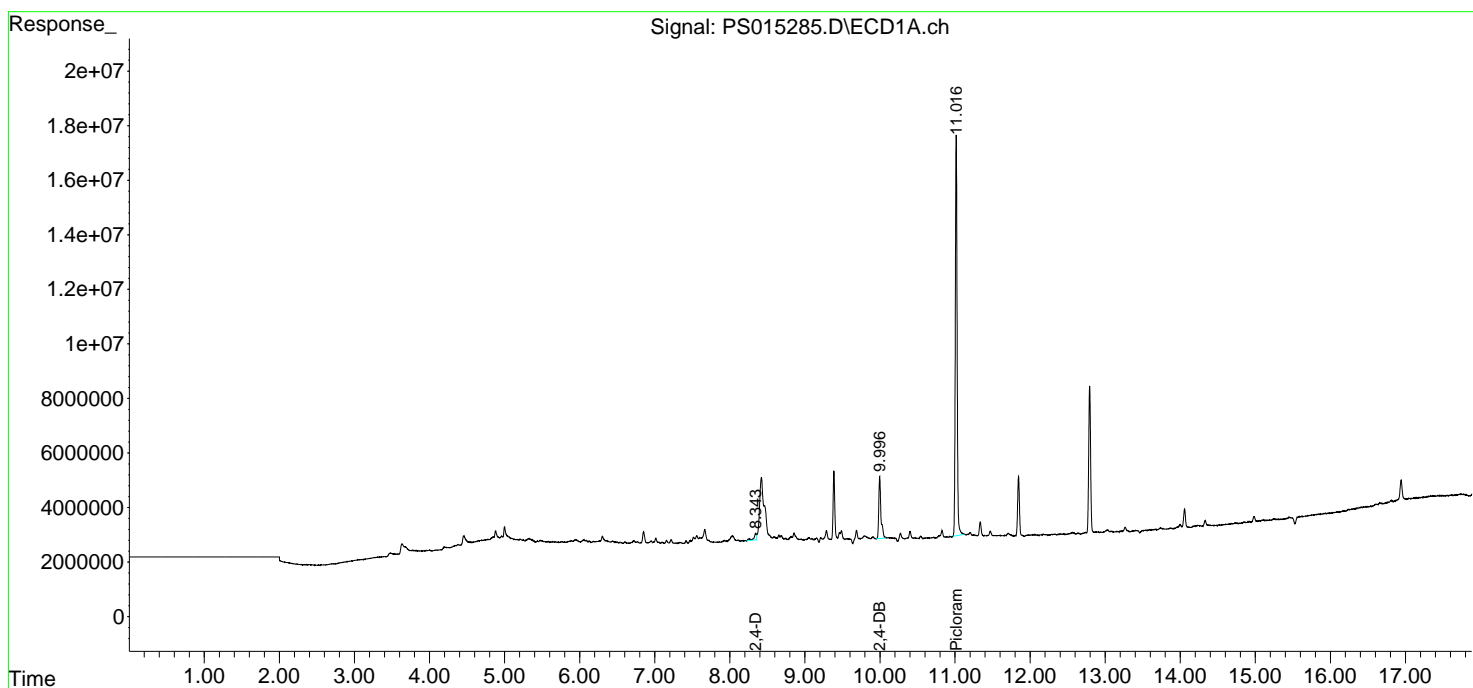
(f)=RT Delta > 1/2 Window (#)=Amounts differ by > 25% (m)=manual int.

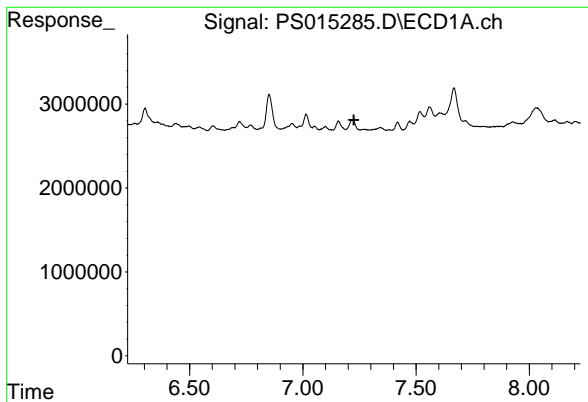
Data Path : Z:\pestpcbsrv\HPCHEM1\ECD\_S\Data\PS060821\  
 Data File : PS015285.D  
 Signal(s) : Signal #1: ECD1A.ch Signal #2: ECD2B.ch  
 Acq On : 08 Jun 2021 10:29  
 Operator : DD\AJ  
 Sample : HEXANE  
 Misc :  
 ALS Vial : 1 Sample Multiplier: 1

Instrument :  
 ECD\_S  
 ClientSampled :

Integration File signal 1: autoint1.e  
 Integration File signal 2: autoint2.e  
 Quant Time: Jun 09 04:09:04 2021  
 Quant Method : Z:\pestpcbsrv\HPCHEM1\ECD\_S\Method\PS052821.M  
 Quant Title : 8080.M  
 QLast Update : Fri May 28 14:34:22 2021  
 Response via : Initial Calibration  
 Integrator: ChemStation

Volume Inj. : 2 µl  
 Signal #1 Phase : Rtx-CLPesticides Signal #2 Phase: Rtx-CLPesticides2  
 Signal #1 Info : 30M x 0.32mm x0.5 Signal #2 Info : 30M x 0.32mm x 0.25µm

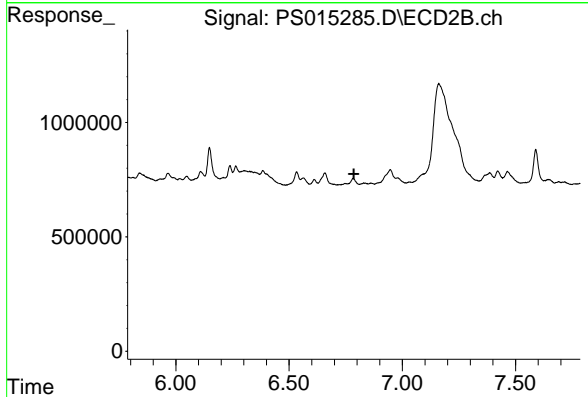




#4 2,4-DCAA

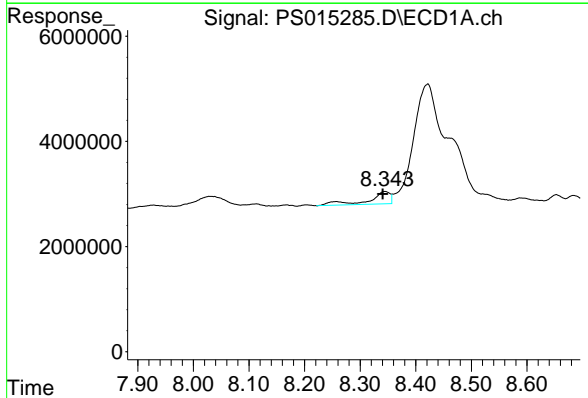
R.T.: 0.000 min  
 Exp R.T. : 7.225 min  
 Response: 0  
 Conc: N.D.

Instrument :  
 ECD\_S  
 ClientSampleId :



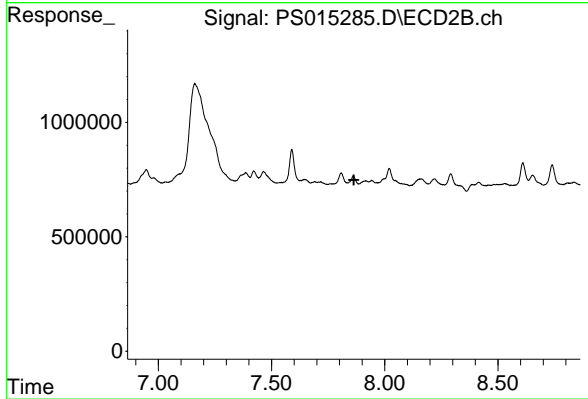
#4 2,4-DCAA

R.T.: 0.000 min  
 Exp R.T. : 6.786 min  
 Response: 0  
 Conc: N.D.



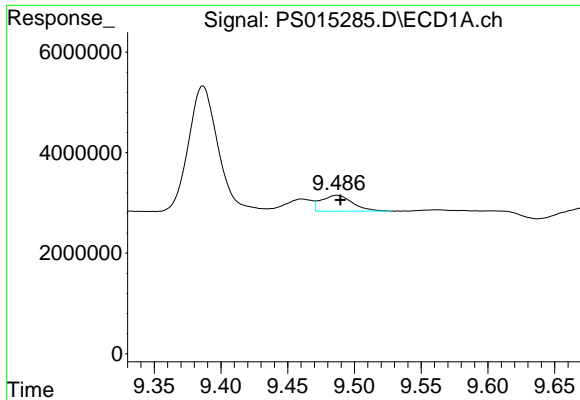
#9 2,4-D

R.T.: 8.344 min  
 Delta R.T.: 0.003 min  
 Response: 6087297  
 Conc: 2.39 ng/ml



#9 2,4-D

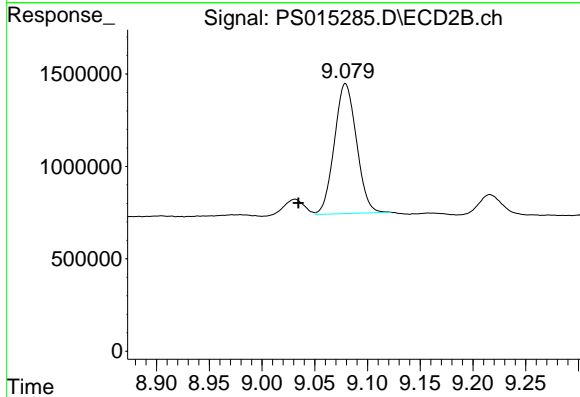
R.T.: 0.000 min  
 Exp R.T. : 7.864 min  
 Response: 0  
 Conc: N.D.



#12 2,4,5-T

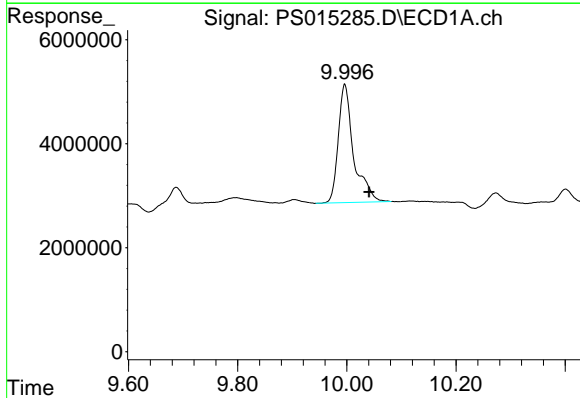
R.T.: 9.487 min  
 Delta R.T.: -0.003 min  
 Response: 5144249  
 Conc: N.D.

Instrument :  
 ECD\_S  
 ClientSampleId :



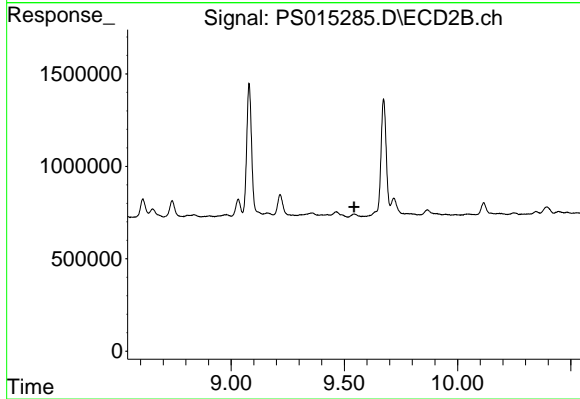
#12 2,4,5-T

R.T.: 9.079 min  
 Delta R.T.: 0.044 min  
 Response: 10247661  
 Conc: 3.54 ng/ml



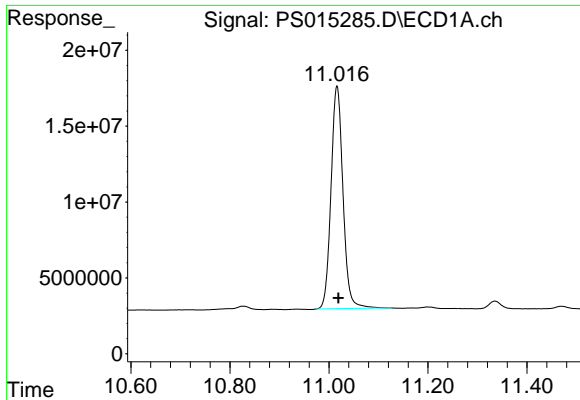
#13 2,4-DB

R.T.: 9.996 min  
 Delta R.T.: -0.044 min  
 Response: 44561777  
 Conc: 17.50 ng/ml



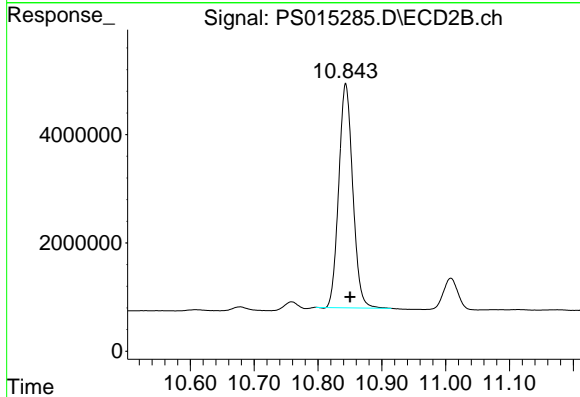
#13 2,4-DB

R.T.: 0.000 min  
 Exp R.T. : 9.542 min  
 Response: 0  
 Conc: N.D.

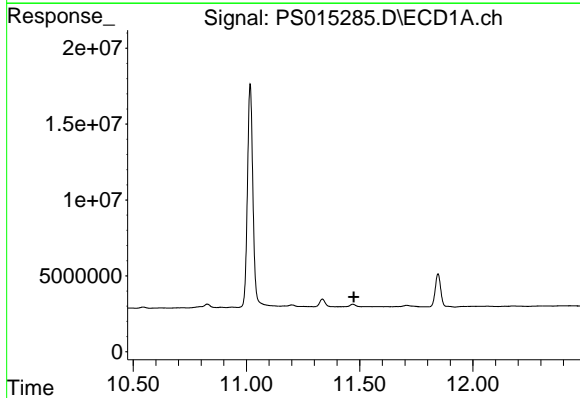


#15 Picloram  
 R.T.: 11.016 min  
 Delta R.T.: -0.003 min  
 Response: 246201093  
 Conc: 14.86 ng/ml

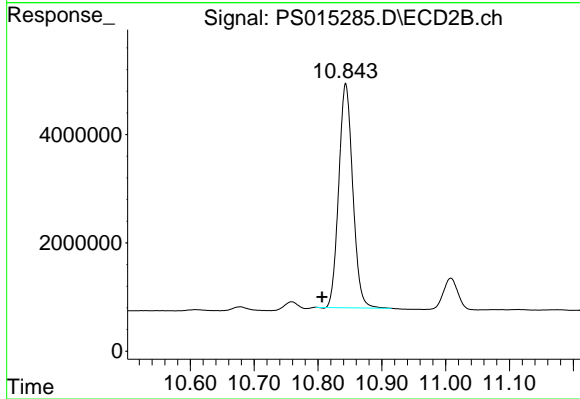
Instrument :  
 ECD\_S  
 ClientSampleId :



#15 Picloram  
 R.T.: 10.843 min  
 Delta R.T.: -0.007 min  
 Response: 63073170  
 Conc: 15.19 ng/ml



#16 DCPA  
 R.T.: 0.000 min  
 Exp R.T. : 11.475 min  
 Response: 0  
 Conc: N.D.



#16 DCPA  
 R.T.: 10.843 min  
 Delta R.T.: 0.037 min  
 Response: 63073170  
 Conc: 14.63 ng/ml