

Data Path : Z:\pestpcbsrv\HPCHEM1\ECD_S\Data\PS060821\
 Data File : PS015287.D
 Signal(s) : Signal #1: ECD1A.ch Signal #2: ECD2B.ch
 Acq On : 08 Jun 2021 11:17
 Operator : DD\AJ
 Sample : HSTDCCC750
 Misc :
 ALS Vial : 3 Sample Multiplier: 1

Instrument :
 ECD_S
 ClientSampleId :

Integration File signal 1: autoint1.e
 Integration File signal 2: autoint2.e
 Quant Time: Jun 09 04:09:38 2021
 Quant Method : Z:\pestpcbsrv\HPCHEM1\ECD_S\Method\PS052821.M
 Quant Title : 8080.M
 QLast Update : Fri May 28 14:34:22 2021
 Response via : Initial Calibration
 Integrator: ChemStation

Volume Inj. : 2 µl
 Signal #1 Phase : Rtx-CLPesticides Signal #2 Phase: Rtx-CLPesticides2
 Signal #1 Info : 30M x 0.32mm x0.5 Signal #2 Info : 30M x 0.32mm x 0.25µm

	Compound	RT#1	RT#2	Resp#1	Resp#2	ng/ml	ng/ml

System Monitoring Compounds							
4) S	2,4-DCAA	7.225	6.783	1761.7E6	406.2E6	698.993	758.220
Target Compounds							
1) T	Dalapon	3.040	2.523	1695.1E6	449.2E6	644.932	686.325
2) T	3,5-DICHL...	6.437	5.970	2233.8E6	567.2E6	647.768	702.149
3) T	4-Nitroph...	7.050	6.400	890.6E6	217.6E6	631.740	684.030
5) T	DICAMBA	7.418	6.948	6506.7E6	1612.4E6	682.633	728.602
6) T	MCPD	7.589	7.046	516.7E6	130.3E6	71.804	73.724
7) T	MCPA	7.738	7.259	703.9E6	188.7E6	70.130	72.630
8) T	DICHLORPROP	8.112	7.570	1557.1E6	393.3E6	676.092	723.901
9) T	2,4-D	8.340	7.860	1713.9E6	463.9E6	672.606	720.237
10) T	Pentachlo...	8.654	8.292	21946.8E6	5363.5E6	677.981	728.622
11) T	2,4,5-TP ...	9.204	8.653	8576.8E6	2145.7E6	691.060	739.403
12) T	2,4,5-T	9.487	9.030	8349.1E6	2160.4E6	695.128	746.253
13) T	2,4-DB	10.036	9.537	1831.3E6	283.3E6	719.151	734.357
14) T	DINOSEB	11.202	9.866	6100.9E6	1529.2E6	763.603	837.379
15) T	Picloram	11.015	10.843	11800.8E6	3183.0E6	712.317	766.445
16) T	DCPA	11.469	10.798	12113.7E6	3269.5E6	718.396	758.409

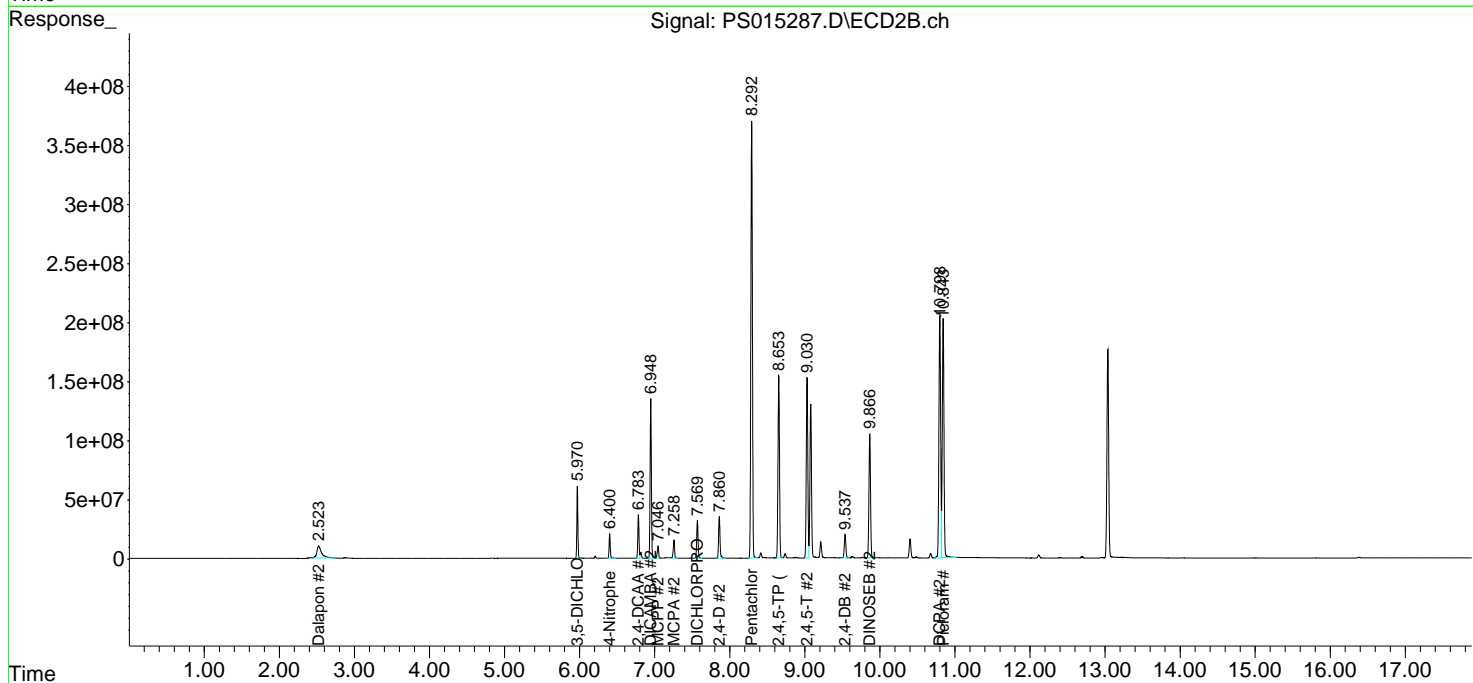
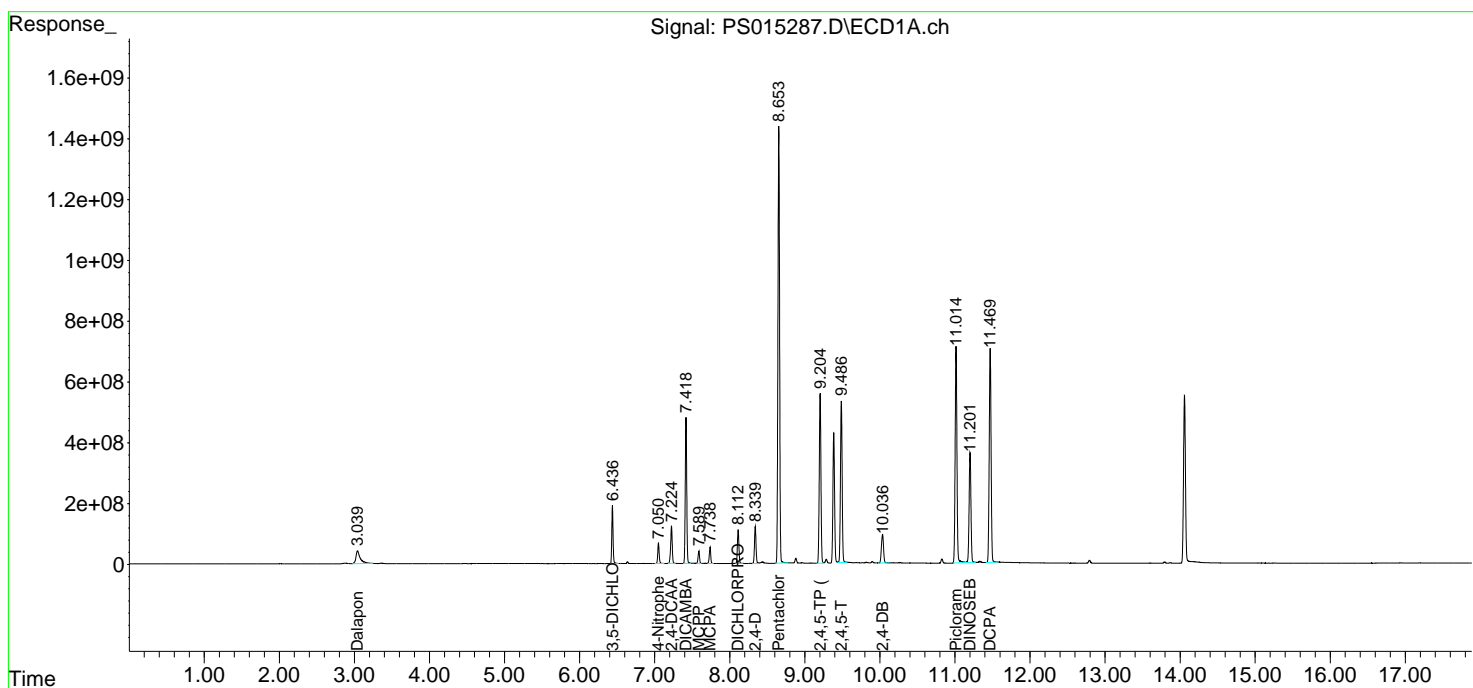
(f)=RT Delta > 1/2 Window (#)=Amounts differ by > 25% (m)=manual int.

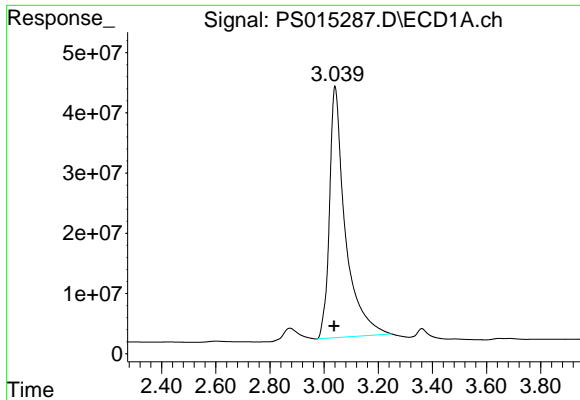
Data Path : Z:\pestpcbsrv\HPCHEM1\ECD_S\Data\PS060821\
 Data File : PS015287.D
 Signal(s) : Signal #1: ECD1A.ch Signal #2: ECD2B.ch
 Acq On : 08 Jun 2021 11:17
 Operator : DD\AJ
 Sample : HSTDCCC750
 Misc :
 ALS Vial : 3 Sample Multiplier: 1

Instrument :
 ECD_S
 ClientSampled :

Integration File signal 1: autoint1.e
 Integration File signal 2: autoint2.e
 Quant Time: Jun 09 04:09:38 2021
 Quant Method : Z:\pestpcbsrv\HPCHEM1\ECD_S\Method\PS052821.M
 Quant Title : 8080.M
 QLast Update : Fri May 28 14:34:22 2021
 Response via : Initial Calibration
 Integrator: ChemStation

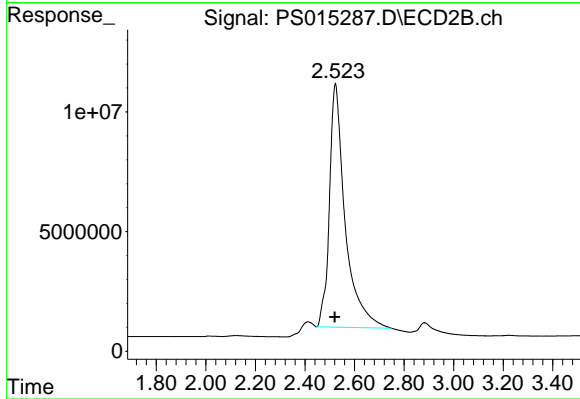
Volume Inj. : 2 µl
 Signal #1 Phase : Rtx-CLPesticides Signal #2 Phase: Rtx-CLPesticides2
 Signal #1 Info : 30M x 0.32mm x0.5 Signal #2 Info : 30M x 0.32mm x 0.25µm



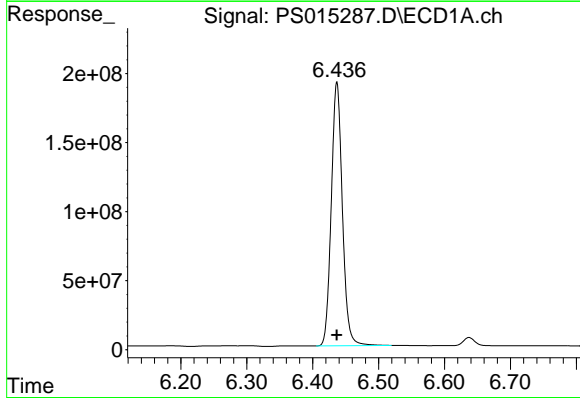


#1 Dalapon
 R.T.: 3.040 min
 Delta R.T.: 0.003 min
 Response: 1695124495
 Conc: 644.93 ng/ml

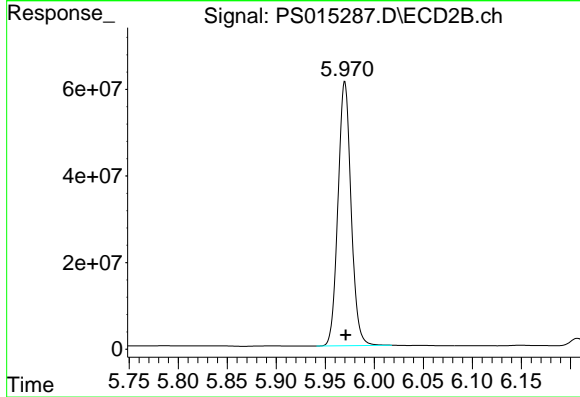
Instrument :
 ECD_S
 ClientSampleId :



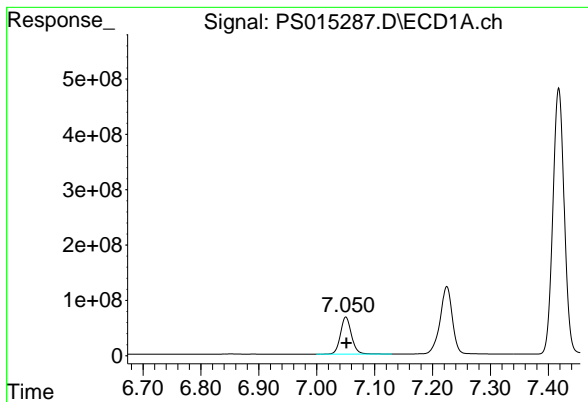
#1 Dalapon
 R.T.: 2.523 min
 Delta R.T.: 0.003 min
 Response: 449167394
 Conc: 686.33 ng/ml



#2 3,5-DICHLOROBENZOIC ACID
 R.T.: 6.437 min
 Delta R.T.: 0.000 min
 Response: 2233772814
 Conc: 647.77 ng/ml

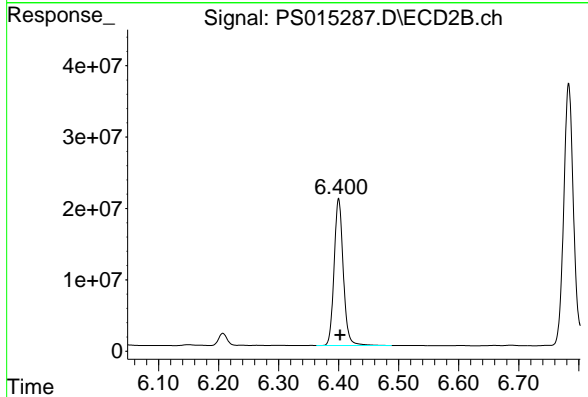


#2 3,5-DICHLOROBENZOIC ACID
 R.T.: 5.970 min
 Delta R.T.: -0.001 min
 Response: 567227380
 Conc: 702.15 ng/ml

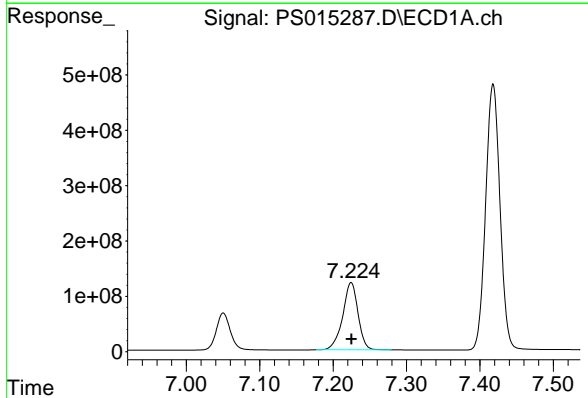


#3 4-Nitrophenol
 R.T.: 7.050 min
 Delta R.T.: 0.000 min
 Response: 890561905
 Conc: 631.74 ng/ml

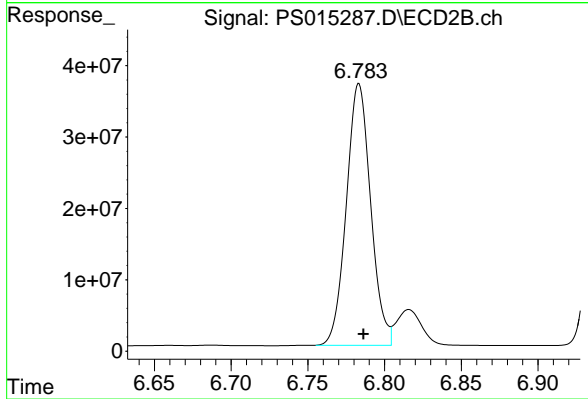
Instrument :
 ECD_S
 ClientSampleId :



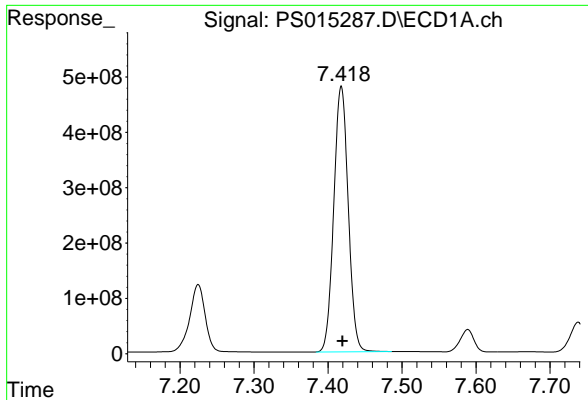
#3 4-Nitrophenol
 R.T.: 6.400 min
 Delta R.T.: -0.002 min
 Response: 217640802
 Conc: 684.03 ng/ml



#4 2,4-DCAA
 R.T.: 7.225 min
 Delta R.T.: 0.000 min
 Response: 1761723412
 Conc: 698.99 ng/ml

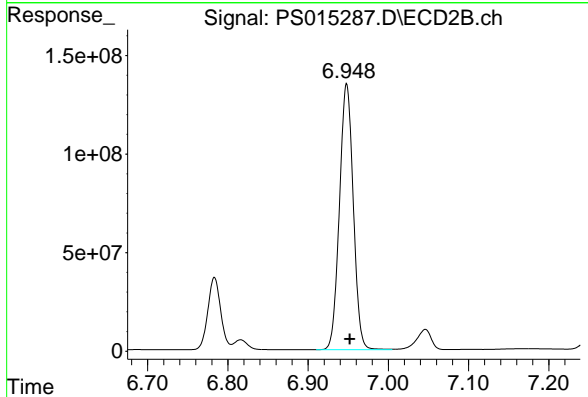


#4 2,4-DCAA
 R.T.: 6.783 min
 Delta R.T.: -0.003 min
 Response: 406232108
 Conc: 758.22 ng/ml

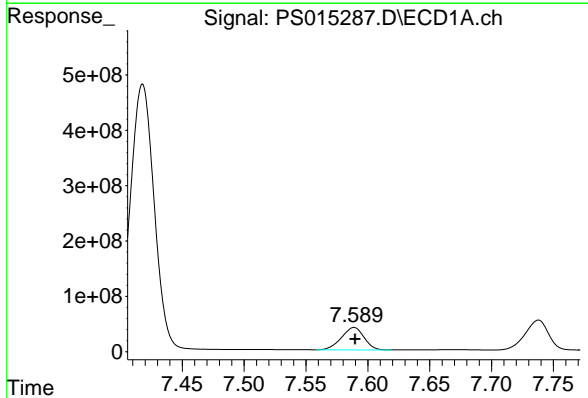


#5 DICAMBA
 R.T.: 7.418 min
 Delta R.T.: -0.001 min
 Response: 6506686927
 Conc: 682.63 ng/ml

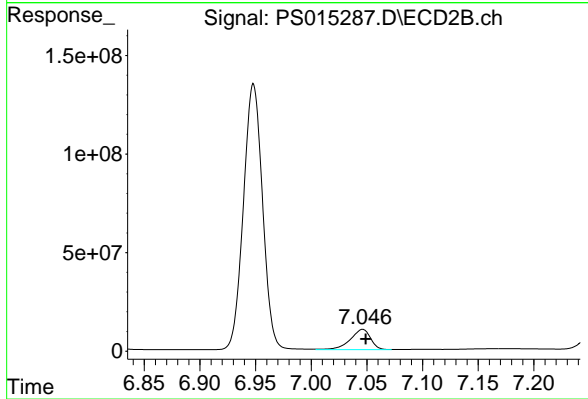
Instrument :
 ECD_S
 ClientSampled :



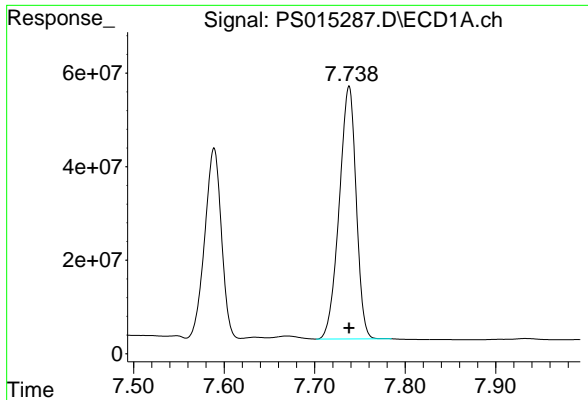
#5 DICAMBA
 R.T.: 6.948 min
 Delta R.T.: -0.004 min
 Response: 1612350940
 Conc: 728.60 ng/ml



#6 MCPP
 R.T.: 7.589 min
 Delta R.T.: 0.000 min
 Response: 516726539
 Conc: 71.80 ug/ml

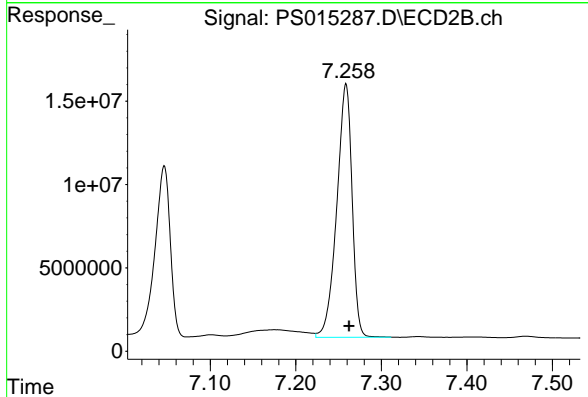


#6 MCPP
 R.T.: 7.046 min
 Delta R.T.: -0.003 min
 Response: 130278976
 Conc: 73.72 ug/ml

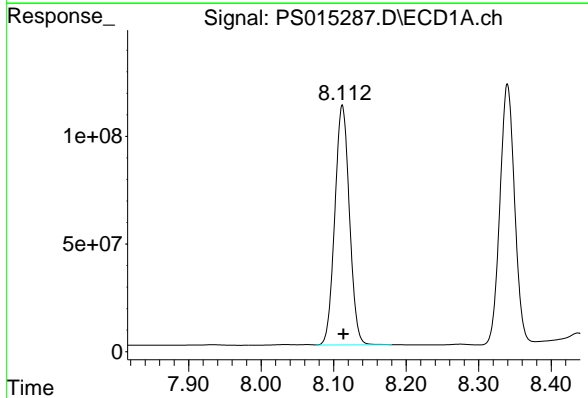


#7 MCPA
 R.T.: 7.738 min
 Delta R.T.: 0.000 min
 Response: 703850098
 Conc: 70.13 ug/ml

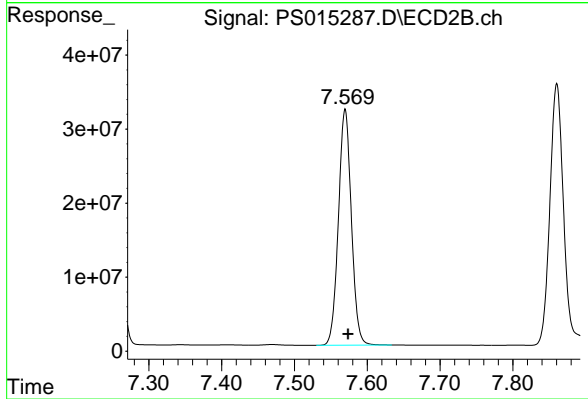
Instrument :
 ECD_S
 ClientSampled :



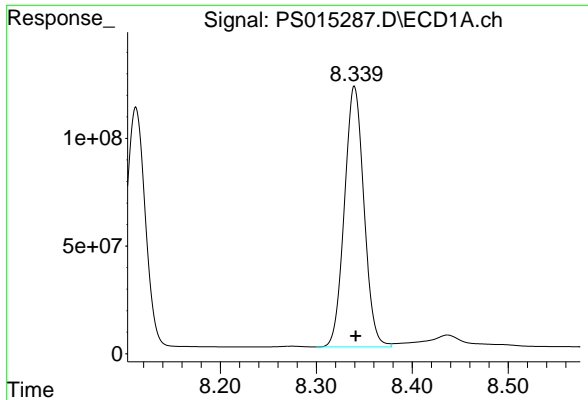
#7 MCPA
 R.T.: 7.259 min
 Delta R.T.: -0.003 min
 Response: 188747015
 Conc: 72.63 ug/ml



#8 DICHLORPROP
 R.T.: 8.112 min
 Delta R.T.: -0.001 min
 Response: 1557108397
 Conc: 676.09 ng/ml

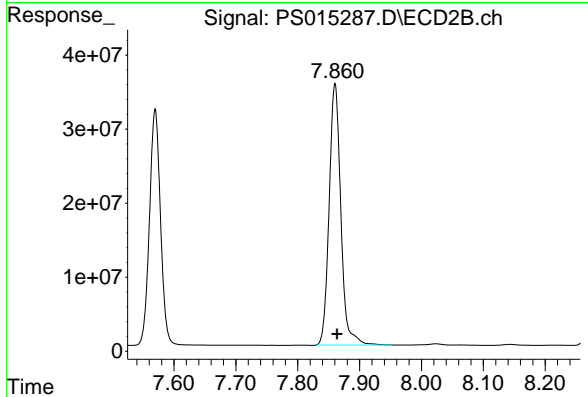


#8 DICHLORPROP
 R.T.: 7.570 min
 Delta R.T.: -0.004 min
 Response: 393268963
 Conc: 723.90 ng/ml

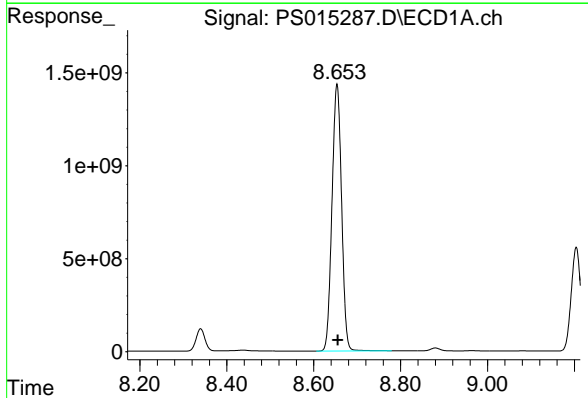


#9 2,4-D
 R.T.: 8.340 min
 Delta R.T.: -0.001 min
 Response: 1713878812
 Conc: 672.61 ng/ml

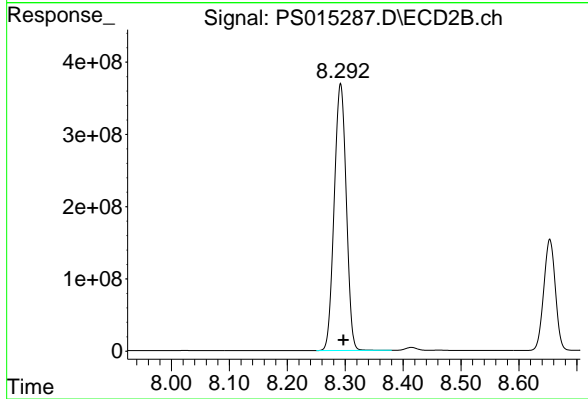
Instrument :
 ECD_S
 ClientSampleId :



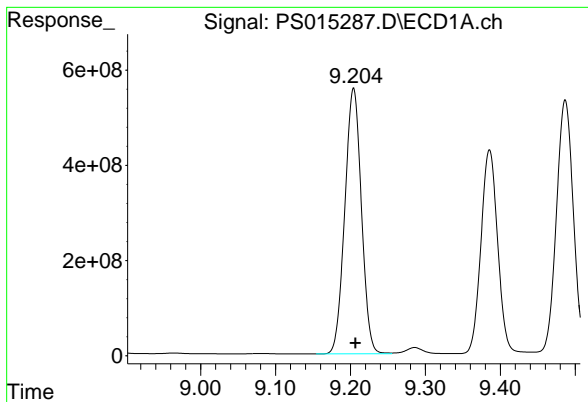
#9 2,4-D
 R.T.: 7.860 min
 Delta R.T.: -0.004 min
 Response: 463850839
 Conc: 720.24 ng/ml



#10 Pentachlorophenol
 R.T.: 8.654 min
 Delta R.T.: -0.002 min
 Response: 21946781878
 Conc: 677.98 ng/ml

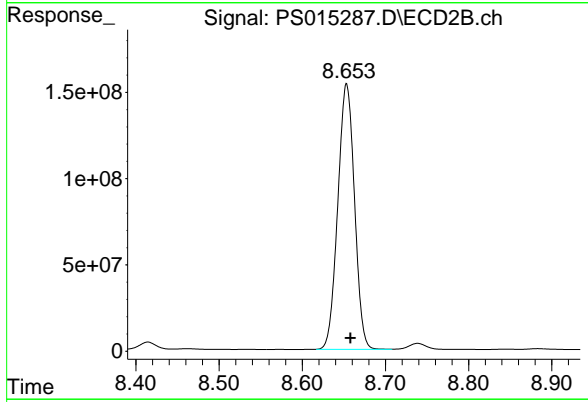


#10 Pentachlorophenol
 R.T.: 8.292 min
 Delta R.T.: -0.005 min
 Response: 5363526036
 Conc: 728.62 ng/ml

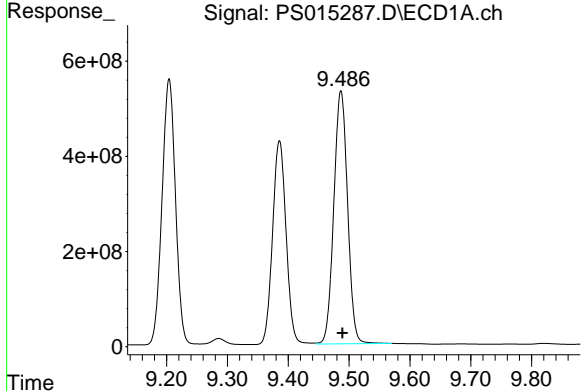


#11 2,4,5-TP (SILVEX)
 R.T.: 9.204 min
 Delta R.T.: -0.002 min
 Response: 8576751150
 Conc: 691.06 ng/ml

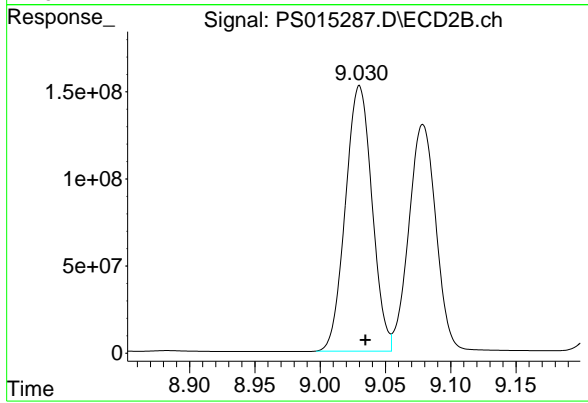
Instrument :
 ECD_S
 ClientSampleId :



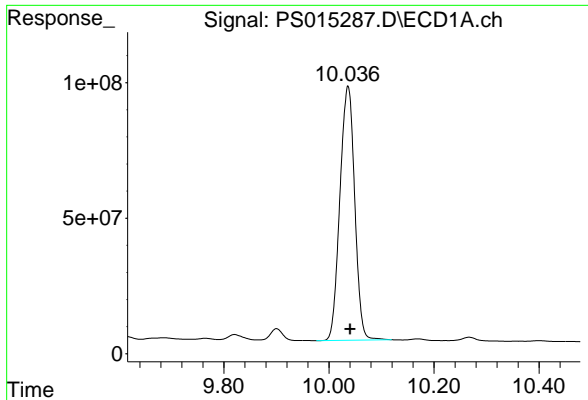
#11 2,4,5-TP (SILVEX)
 R.T.: 8.653 min
 Delta R.T.: -0.005 min
 Response: 2145700362
 Conc: 739.40 ng/ml



#12 2,4,5-T
 R.T.: 9.487 min
 Delta R.T.: -0.003 min
 Response: 8349112549
 Conc: 695.13 ng/ml

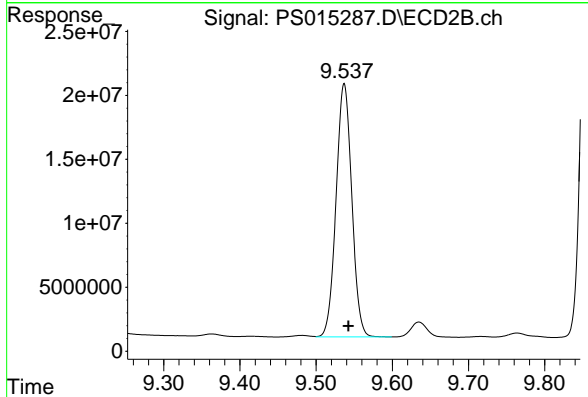


#12 2,4,5-T
 R.T.: 9.030 min
 Delta R.T.: -0.005 min
 Response: 2160403650
 Conc: 746.25 ng/ml

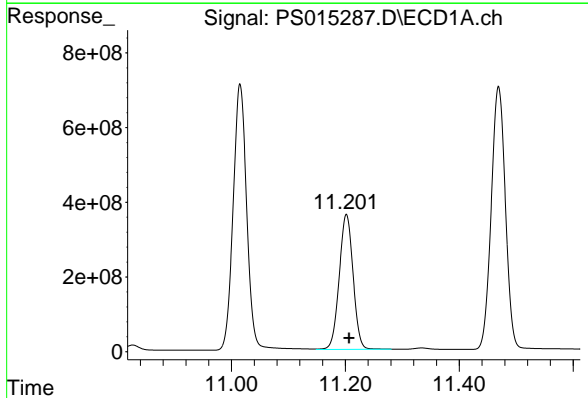


#13 2,4-DB
 R.T.: 10.036 min
 Delta R.T.: -0.004 min
 Response: 1831336520
 Conc: 719.15 ng/ml

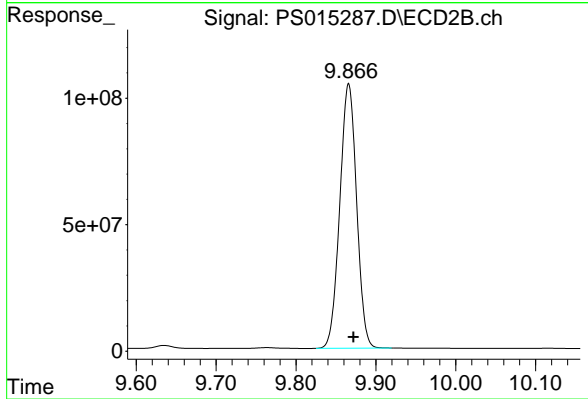
Instrument :
 ECD_S
 ClientSampleId :



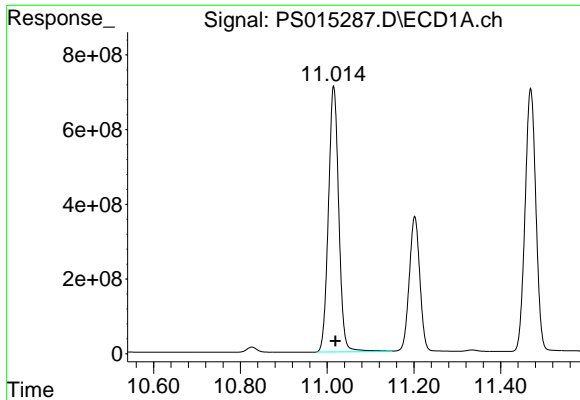
#13 2,4-DB
 R.T.: 9.537 min
 Delta R.T.: -0.006 min
 Response: 283277643
 Conc: 734.36 ng/ml



#14 DINOSEB
 R.T.: 11.202 min
 Delta R.T.: -0.005 min
 Response: 6100858598
 Conc: 763.60 ng/ml

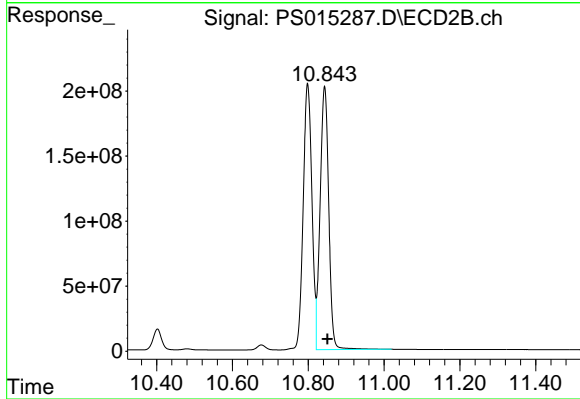


#14 DINOSEB
 R.T.: 9.866 min
 Delta R.T.: -0.006 min
 Response: 1529172315
 Conc: 837.38 ng/ml

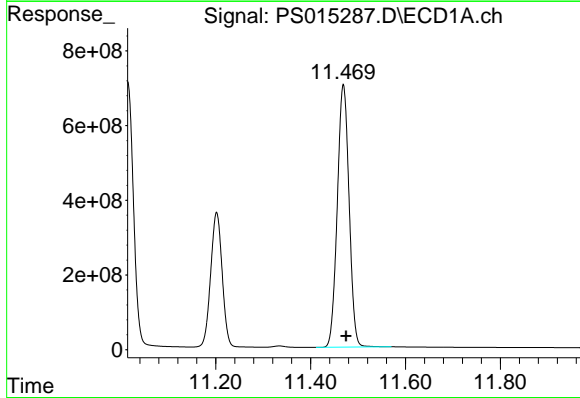


#15 Picloram
 R.T.: 11.015 min
 Delta R.T.: -0.004 min
 Response: 11800797359
 Conc: 712.32 ng/ml

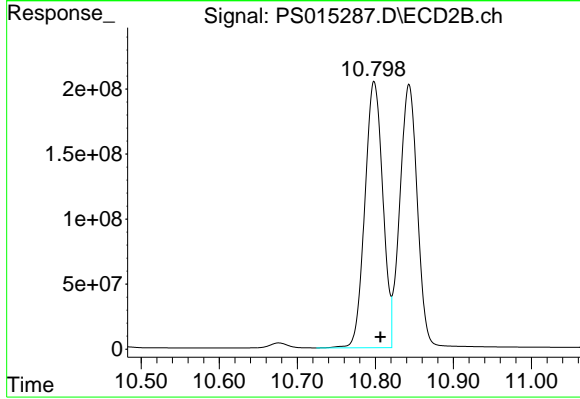
Instrument :
 ECD_S
 ClientSampleId :



#15 Picloram
 R.T.: 10.843 min
 Delta R.T.: -0.007 min
 Response: 3182963935
 Conc: 766.44 ng/ml



#16 DCPA
 R.T.: 11.469 min
 Delta R.T.: -0.006 min
 Response: 12113650219
 Conc: 718.40 ng/ml



#16 DCPA
 R.T.: 10.798 min
 Delta R.T.: -0.008 min
 Response: 3269497840
 Conc: 758.41 ng/ml