

Data Path : Z:\pestpcbsrv\HPCHEM1\ECD_S\Data\PS060821\
 Data File : PS015295.D
 Signal(s) : Signal #1: ECD1A.ch Signal #2: ECD2B.ch
 Acq On : 08 Jun 2021 16:05
 Operator : DD\AJ
 Sample : M2598-04
 Misc :
 ALS Vial : 11 Sample Multiplier: 1

Instrument :
 ECD_S
 ClientSampleId :

Integration File signal 1: autoint1.e
 Integration File signal 2: autoint2.e
 Quant Time: Jun 09 04:12:16 2021
 Quant Method : Z:\pestpcbsrv\HPCHEM1\ECD_S\Method\PS052821.M
 Quant Title : 8080.M
 QLast Update : Fri May 28 14:34:22 2021
 Response via : Initial Calibration
 Integrator: ChemStation

Volume Inj. : 2 µl
 Signal #1 Phase : Rtx-CLPesticides Signal #2 Phase: Rtx-CLPesticides2
 Signal #1 Info : 30M x 0.32mm x0.5 Signal #2 Info : 30M x 0.32mm x 0.25µm

	Compound	RT#1	RT#2	Resp#1	Resp#2	ng/ml	ng/ml

System Monitoring Compounds							
4) S	2,4-DCAA	7.225	6.783	915.2E6	226.5E6	363.124	422.762
Target Compounds							
1) T	Dalapon	3.005	2.488	97333916	31198054	37.032	47.670 #
2) T	3,5-DICHL...	6.490f	5.954	-4371149	2285025	N.D.	2.829
3) T	4-Nitroph...	7.060	6.433	14814027	6508972	10.509	20.457 #
5) T	DICAMBA	7.428	6.952	15380550	6075485	1.614	2.745 #
6) T	MCP P	7.589	7.098f	34007099	4399538	4.726	2.490 #
7) T	MCPA	7.761	7.243	44820173	12039870	4.466	4.633
8) T	DICHLORPROP	8.121	7.585	40252092	9075125	17.477	16.705
9) T	2,4-D	8.345	7.844	36880802	11246774	14.474	17.463
10) T	Pentachlo...	8.653	8.291	475.4E6	122.5E6	14.686	16.642
12) T	2,4,5-T	9.437f	9.031	103.2E6	5808803	8.595	2.006 #
13) T	2,4-DB	10.017	9.542	59312837	22995029	23.292	59.611 #
14) T	DINOSEB	11.165f	9.883	279.9E6	43127772	35.037	23.617 #
15) T	Picloram	10.989	10.856	388.1E6	38409978	23.427	9.249 #

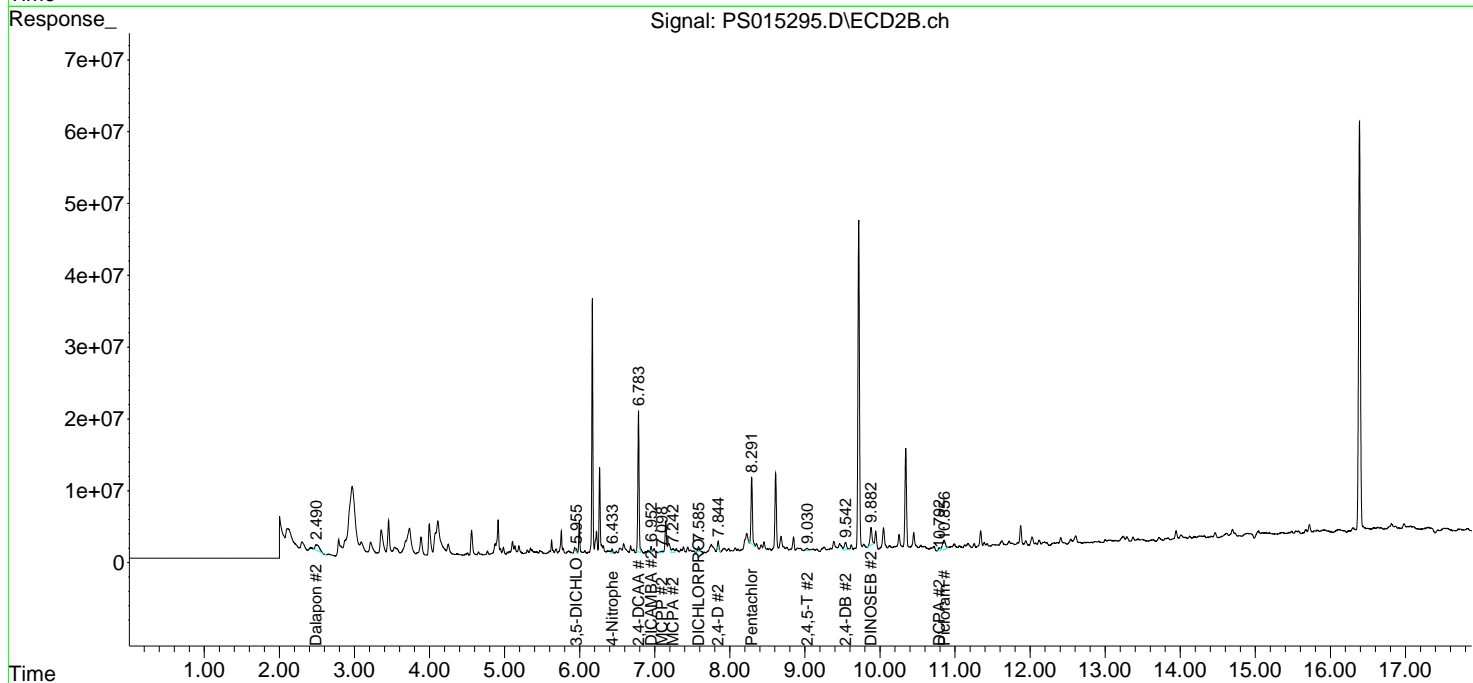
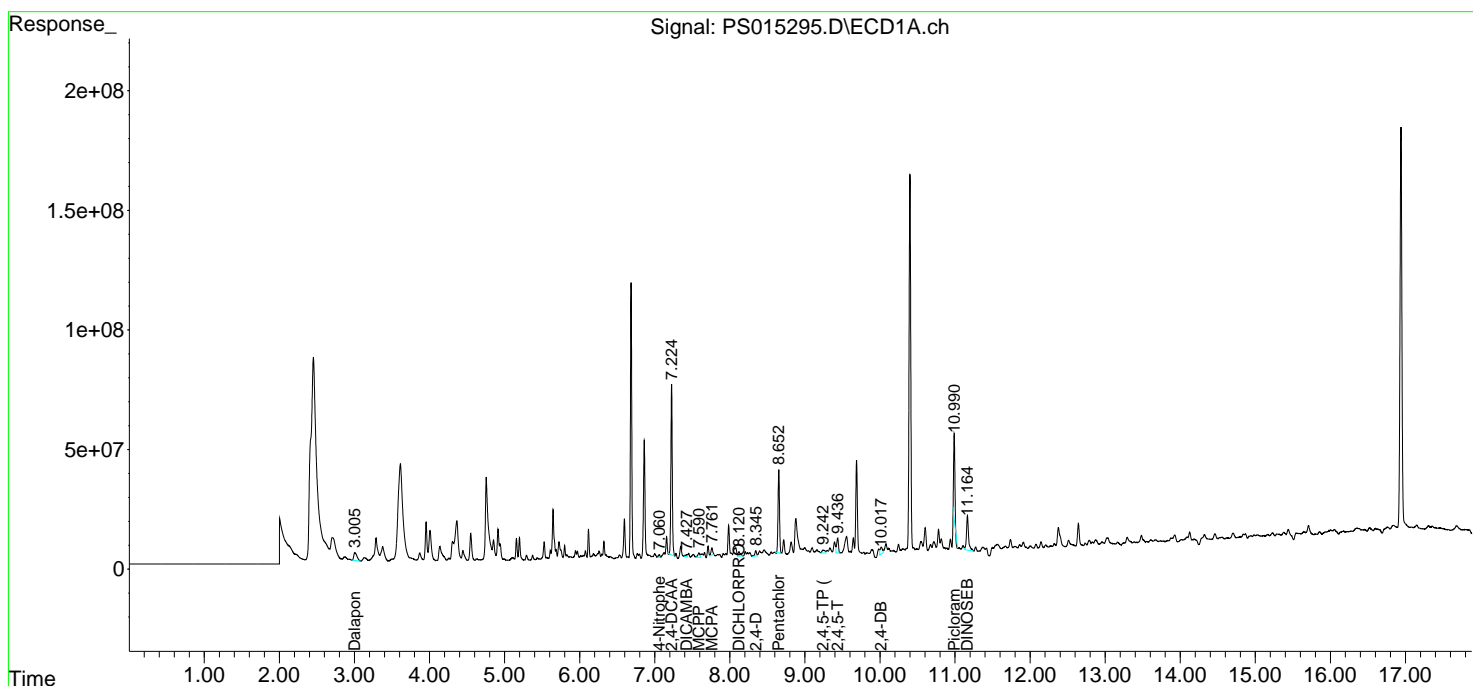
(f)=RT Delta > 1/2 Window (#)=Amounts differ by > 25% (m)=manual int.

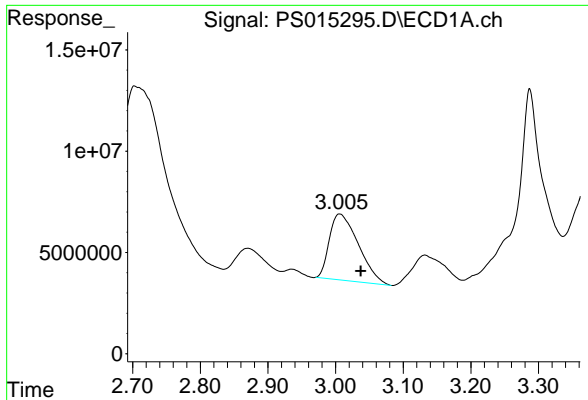
Data Path : Z:\pestpcbsrv\HPCHEM1\ECD_S\Data\PS060821\
 Data File : PS015295.D
 Signal(s) : Signal #1: ECD1A.ch Signal #2: ECD2B.ch
 Acq On : 08 Jun 2021 16:05
 Operator : DD\AJ
 Sample : M2598-04
 Misc :
 ALS Vial : 11 Sample Multiplier: 1

Instrument :
 ECD_S
 ClientSampled :

Integration File signal 1: autoint1.e
 Integration File signal 2: autoint2.e
 Quant Time: Jun 09 04:12:16 2021
 Quant Method : Z:\pestpcbsrv\HPCHEM1\ECD_S\Method\PS052821.M
 Quant Title : 8080.M
 QLast Update : Fri May 28 14:34:22 2021
 Response via : Initial Calibration
 Integrator: ChemStation

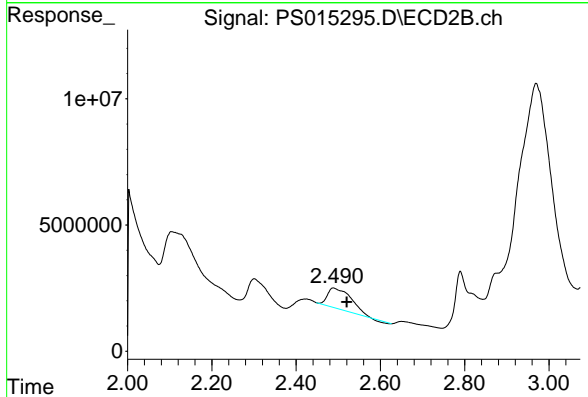
Volume Inj. : 2 µl
 Signal #1 Phase : Rtx-CLPesticides Signal #2 Phase: Rtx-CLPesticides2
 Signal #1 Info : 30M x 0.32mm x0.5 Signal #2 Info : 30M x 0.32mm x 0.25µm



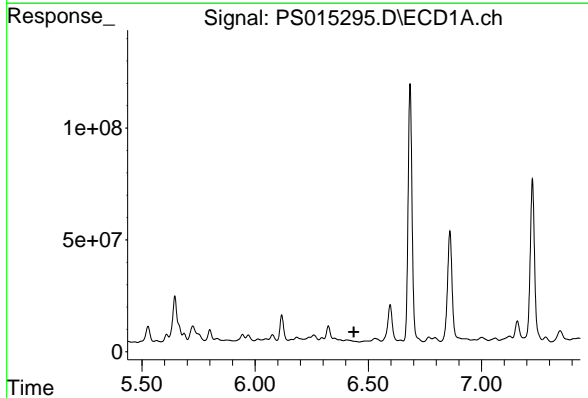


#1 Dalapon
 R.T.: 3.005 min
 Delta R.T.: -0.032 min
 Response: 97333916
 Conc: 37.03 ng/ml

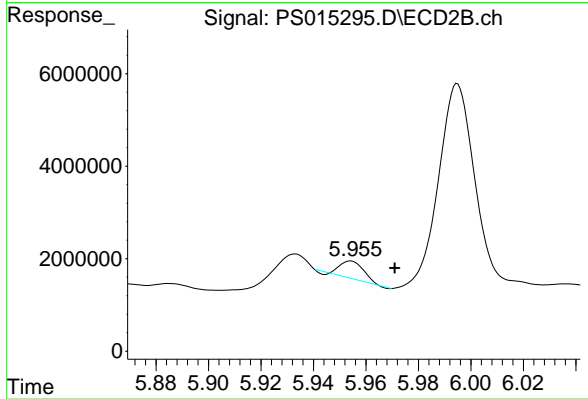
Instrument :
 ECD_S
 ClientSampleId :



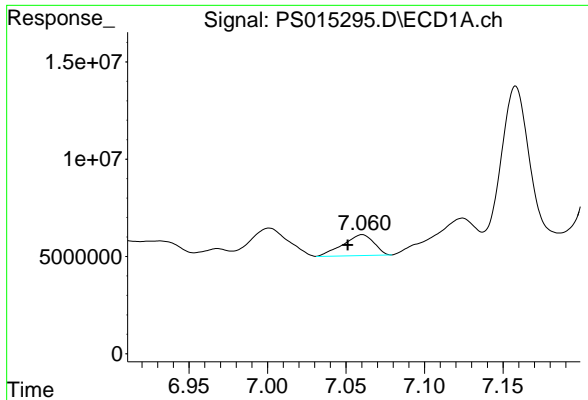
#1 Dalapon
 R.T.: 2.488 min
 Delta R.T.: -0.032 min
 Response: 31198054
 Conc: 47.67 ng/ml



#2 3,5-DICHLOROBENZOIC ACID
 R.T.: 6.490 min
 Delta R.T.: 0.054 min
 Response: -4371149
 Conc: N.D.

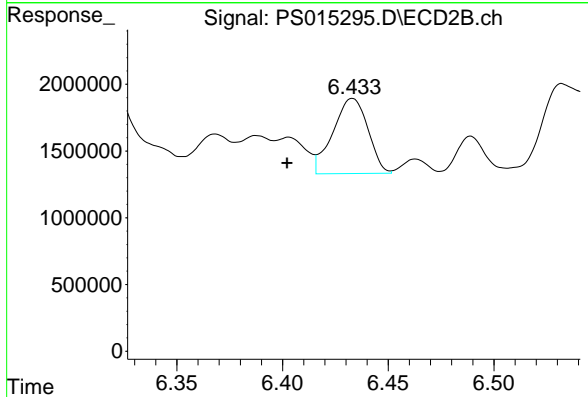


#2 3,5-DICHLOROBENZOIC ACID
 R.T.: 5.954 min
 Delta R.T.: -0.017 min
 Response: 2285025
 Conc: 2.83 ng/ml

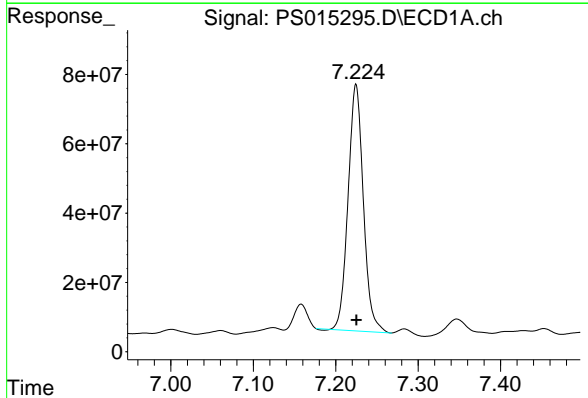


#3 4-Nitrophenol
 R.T.: 7.060 min
 Delta R.T.: 0.009 min
 Response: 14814027
 Conc: 10.51 ng/ml

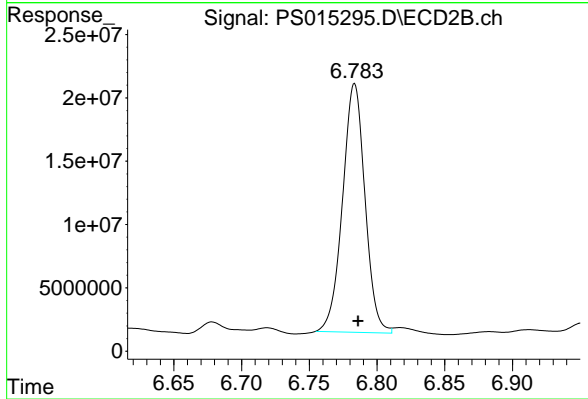
Instrument :
 ECD_S
 ClientSampled :



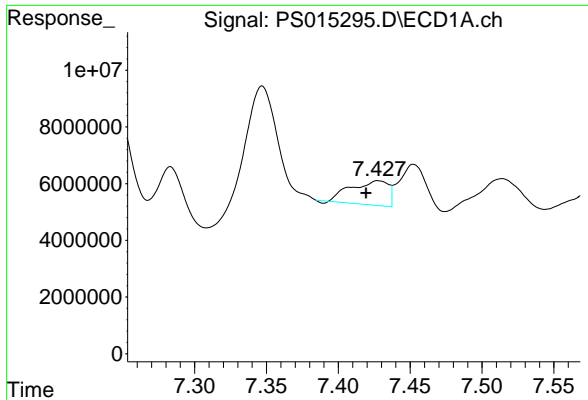
#3 4-Nitrophenol
 R.T.: 6.433 min
 Delta R.T.: 0.031 min
 Response: 6508972
 Conc: 20.46 ng/ml



#4 2,4-DCAA
 R.T.: 7.225 min
 Delta R.T.: 0.000 min
 Response: 915207794
 Conc: 363.12 ng/ml



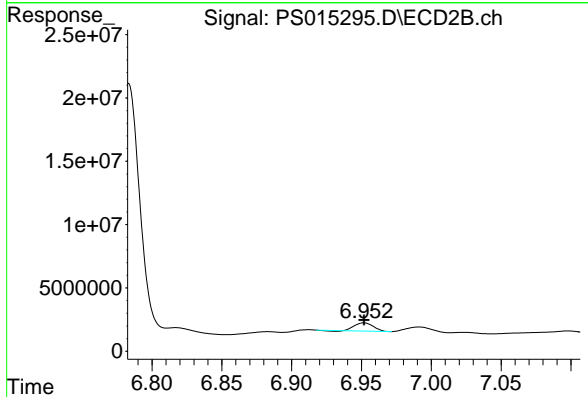
#4 2,4-DCAA
 R.T.: 6.783 min
 Delta R.T.: -0.003 min
 Response: 226503706
 Conc: 422.76 ng/ml



#5 DICAMBA

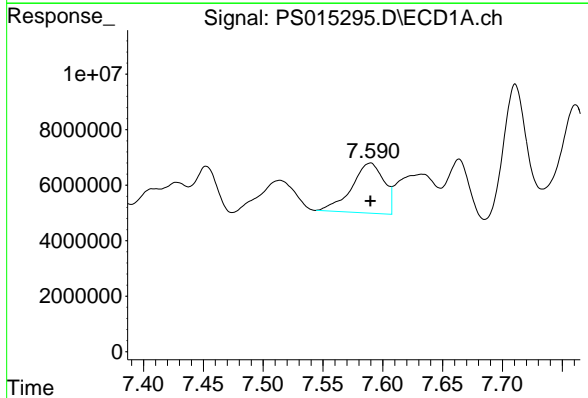
R.T.: 7.428 min
 Delta R.T.: 0.009 min
 Response: 15380550
 Conc: 1.61 ng/ml

Instrument :
 ECD_S
 ClientSampled :



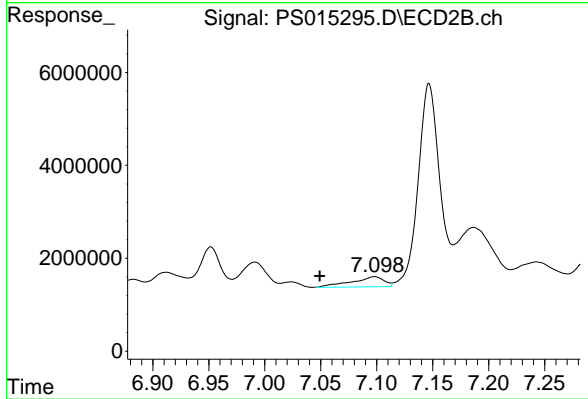
#5 DICAMBA

R.T.: 6.952 min
 Delta R.T.: 0.000 min
 Response: 6075485
 Conc: 2.75 ng/ml



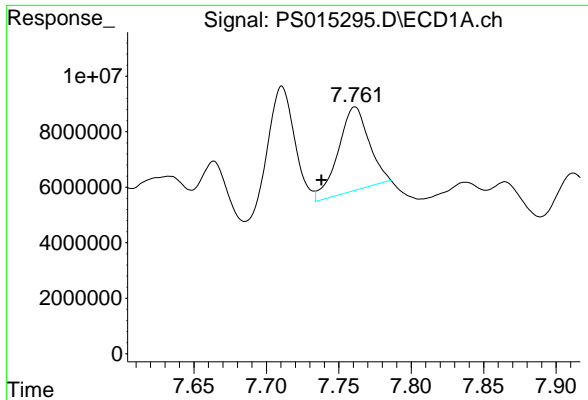
#6 MCPP

R.T.: 7.589 min
 Delta R.T.: 0.000 min
 Response: 34007099
 Conc: 4.73 ug/ml



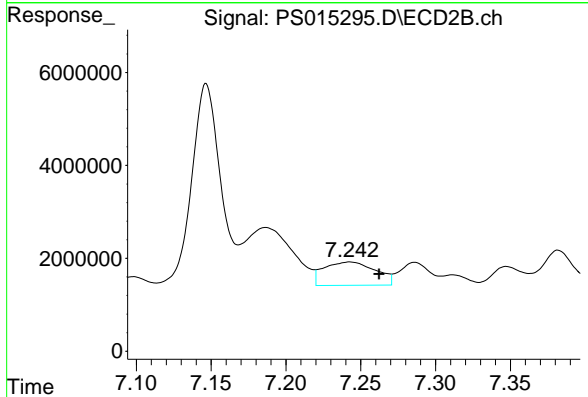
#6 MCPP

R.T.: 7.098 min
 Delta R.T.: 0.049 min
 Response: 4399538
 Conc: 2.49 ug/ml

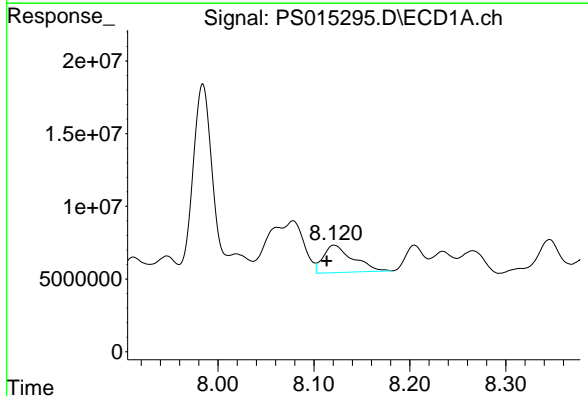


#7 MCPA
 R.T.: 7.761 min
 Delta R.T.: 0.023 min
 Response: 44820173
 Conc: 4.47 ug/ml

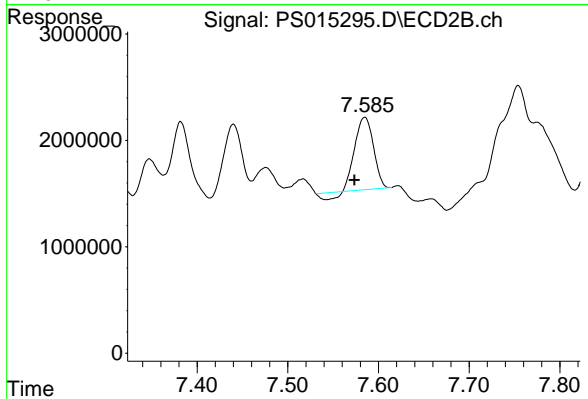
Instrument :
 ECD_S
 ClientSampled :



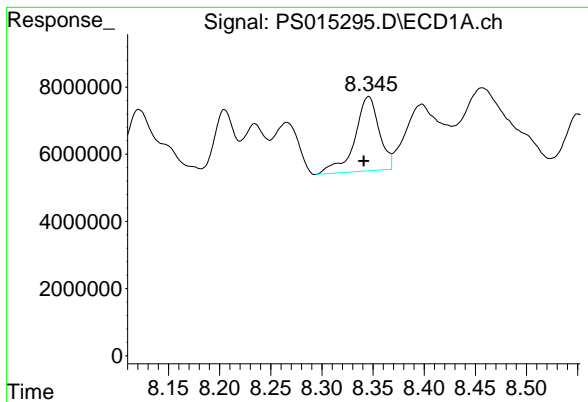
#7 MCPA
 R.T.: 7.243 min
 Delta R.T.: -0.019 min
 Response: 12039870
 Conc: 4.63 ug/ml



#8 DICHLORPROP
 R.T.: 8.121 min
 Delta R.T.: 0.008 min
 Response: 40252092
 Conc: 17.48 ng/ml

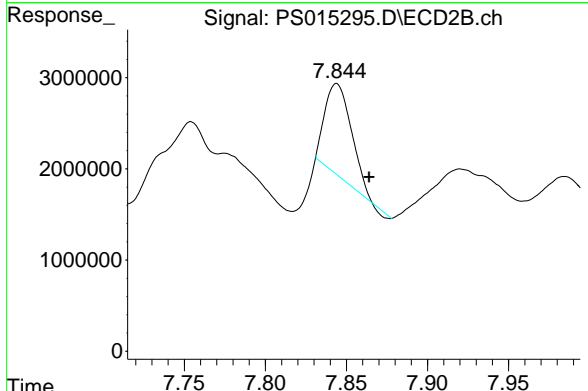


#8 DICHLORPROP
 R.T.: 7.585 min
 Delta R.T.: 0.011 min
 Response: 9075125
 Conc: 16.70 ng/ml

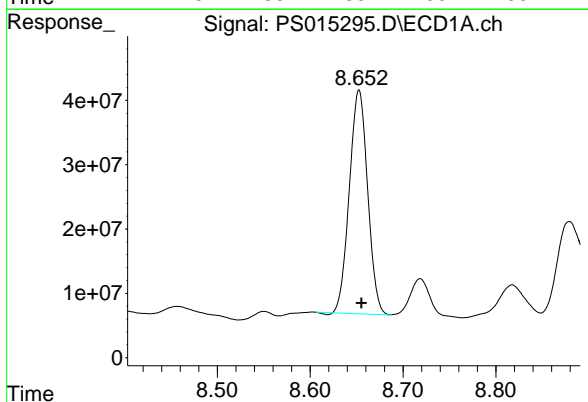


#9 2,4-D
 R.T.: 8.345 min
 Delta R.T.: 0.005 min
 Response: 36880802
 Conc: 14.47 ng/ml

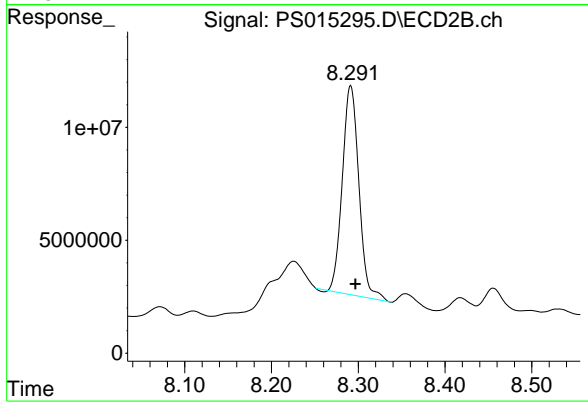
Instrument :
 ECD_S
 ClientSampleId :



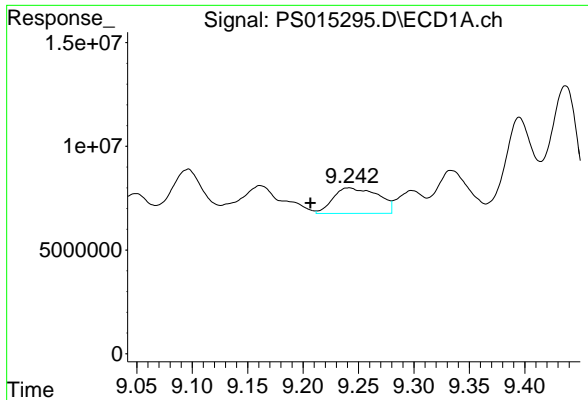
#9 2,4-D
 R.T.: 7.844 min
 Delta R.T.: -0.020 min
 Response: 11246774
 Conc: 17.46 ng/ml



#10 Pentachlorophenol
 R.T.: 8.653 min
 Delta R.T.: -0.003 min
 Response: 475406071
 Conc: 14.69 ng/ml

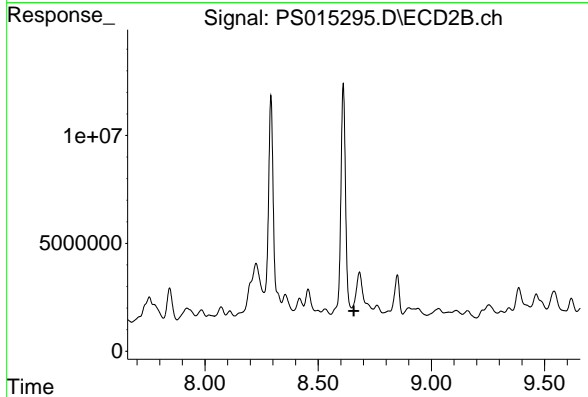


#10 Pentachlorophenol
 R.T.: 8.291 min
 Delta R.T.: -0.006 min
 Response: 122504031
 Conc: 16.64 ng/ml

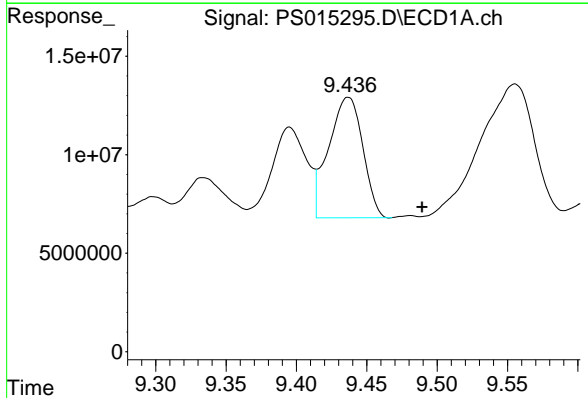


#11 2,4,5-TP (SILVEX)
 R.T.: 9.241 min
 Delta R.T.: 0.035 min
 Response: 34720032
 Conc: 2.80 ng/ml

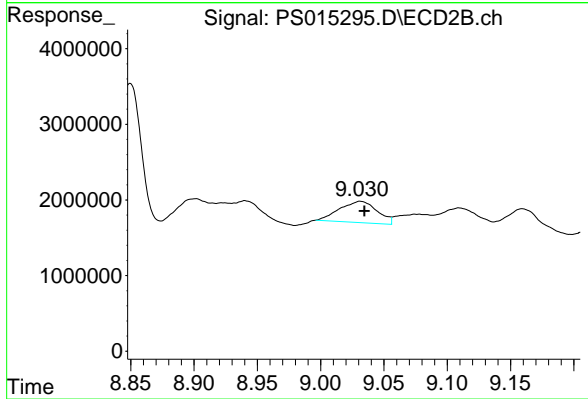
Instrument :
 ECD_S
 ClientSampled :



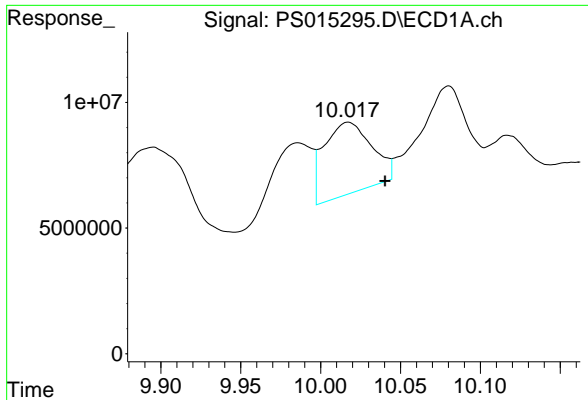
#11 2,4,5-TP (SILVEX)
 R.T.: 8.682 min
 Delta R.T.: 0.024 min
 Response: -71783281
 Conc: N.D.



#12 2,4,5-T
 R.T.: 9.437 min
 Delta R.T.: -0.053 min
 Response: 103235922
 Conc: 8.60 ng/ml

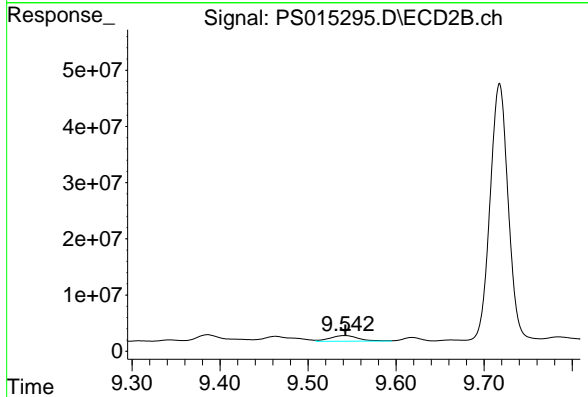


#12 2,4,5-T
 R.T.: 9.031 min
 Delta R.T.: -0.003 min
 Response: 5808803
 Conc: 2.01 ng/ml

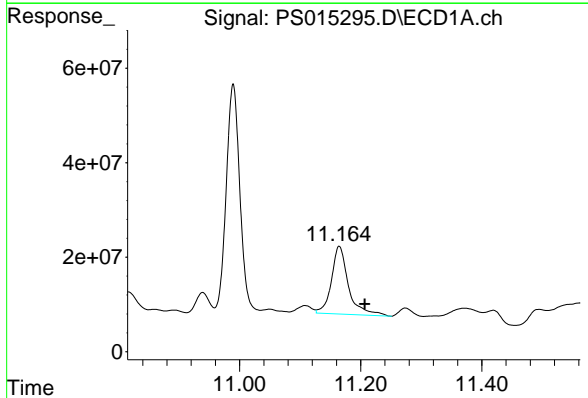


#13 2,4-DB
 R.T.: 10.017 min
 Delta R.T.: -0.023 min
 Response: 59312837
 Conc: 23.29 ng/ml

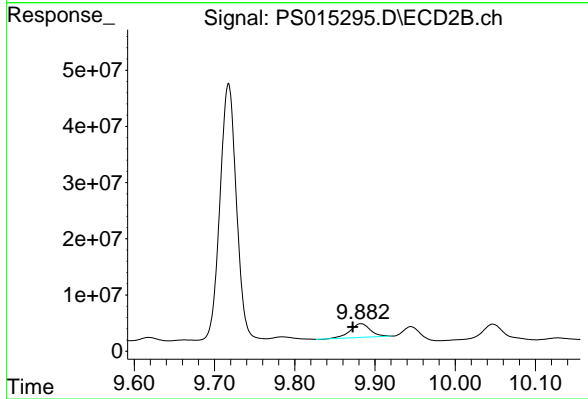
Instrument :
 ECD_S
 ClientSampleId :



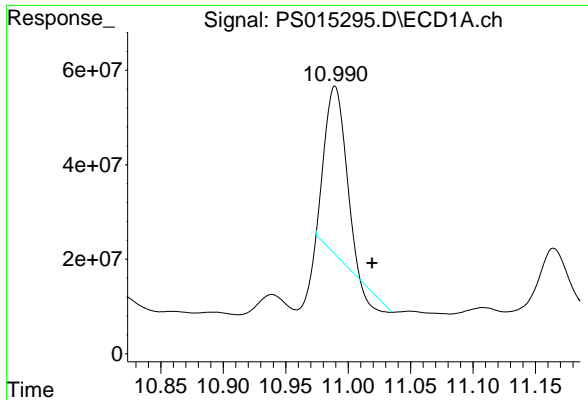
#13 2,4-DB
 R.T.: 9.542 min
 Delta R.T.: 0.000 min
 Response: 22995029
 Conc: 59.61 ng/ml



#14 DINOSEB
 R.T.: 11.165 min
 Delta R.T.: -0.042 min
 Response: 279931278
 Conc: 35.04 ng/ml

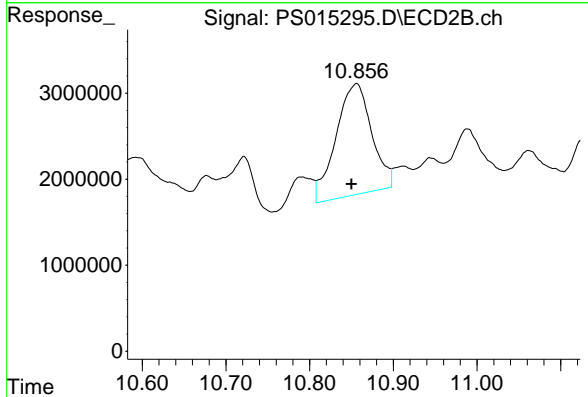


#14 DINOSEB
 R.T.: 9.883 min
 Delta R.T.: 0.010 min
 Response: 43127772
 Conc: 23.62 ng/ml

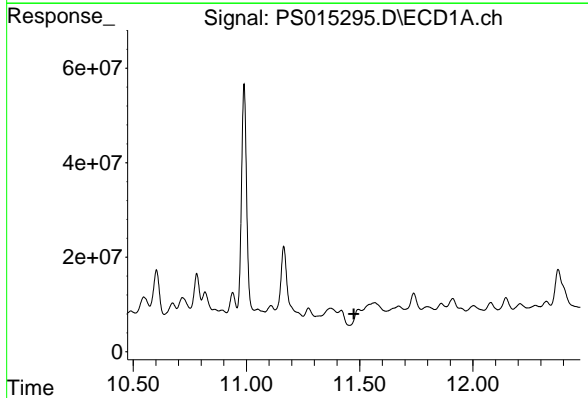


#15 Picloram
 R.T.: 10.989 min
 Delta R.T.: -0.030 min
 Response: 388108952
 Conc: 23.43 ng/ml

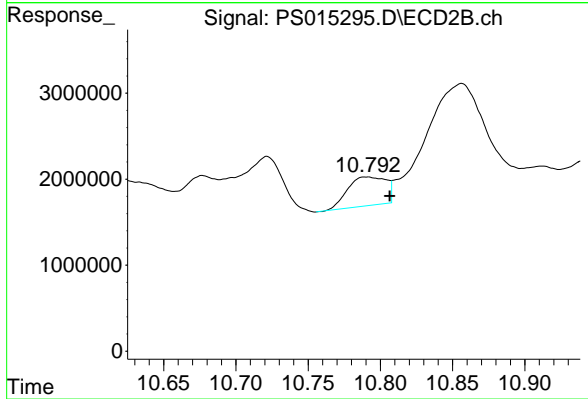
Instrument :
 ECD_S
 ClientSampleId :



#15 Picloram
 R.T.: 10.856 min
 Delta R.T.: 0.006 min
 Response: 38409978
 Conc: 9.25 ng/ml



#16 DCPA
 R.T.: 11.495 min
 Delta R.T.: 0.020 min
 Response: -59201319
 Conc: N.D.



#16 DCPA
 R.T.: 10.790 min
 Delta R.T.: -0.016 min
 Response: 6185543
 Conc: 1.43 ng/ml