

Data Path : Z:\pestpcbsrv\HPCHEM1\ECD_S\Data\PS060821\
 Data File : PS015297.D
 Signal(s) : Signal #1: ECD1A.ch Signal #2: ECD2B.ch
 Acq On : 08 Jun 2021 16:53
 Operator : DD\AJ
 Sample : M2598-04MSD
 Misc :
 ALS Vial : 13 Sample Multiplier: 1

Instrument :
 ECD_S
 ClientSampleId :

Integration File signal 1: autoint1.e
 Integration File signal 2: autoint2.e
 Quant Time: Jun 09 04:12:56 2021
 Quant Method : Z:\pestpcbsrv\HPCHEM1\ECD_S\Method\PS052821.M
 Quant Title : 8080.M
 QLast Update : Fri May 28 14:34:22 2021
 Response via : Initial Calibration
 Integrator: ChemStation

Volume Inj. : 2 µl
 Signal #1 Phase : Rtx-CLPesticides Signal #2 Phase: Rtx-CLPesticides2
 Signal #1 Info : 30M x 0.32mm x0.5 Signal #2 Info : 30M x 0.32mm x 0.25µm

	Compound	RT#1	RT#2	Resp#1	Resp#2	ng/ml	ng/ml

System Monitoring Compounds							
4) S	2,4-DCAA	7.225	6.784	543.9E6	109.2E6	215.790	203.863
Target Compounds							
1) T	Dalapon	3.041	2.524	373.4E6	176.1E6	142.064	269.143 #
2) T	3,5-DICHL...	6.436	5.970	560.7E6	123.0E6	162.592	152.270
3) T	4-Nitroph...	7.051	6.401	334.2E6	86197789	237.105	270.914
5) T	DICAMBA	7.418	6.948	1985.9E6	474.5E6	208.350	214.404
6) T	MCP P	7.584	7.040	96855269	24359611	13.459	13.785
7) T	MCPA	7.731	7.251	222.9E6	63753885	22.209	24.532
8) T	DICHLORPROP	8.112	7.570	395.8E6	90519318	171.843	166.621
9) T	2,4-D	8.340	7.861	694.2E6	163.1E6	272.425	253.216
10) T	Pentachlo...	8.653	8.292	4660.2E6	1206.7E6	143.962	163.925
11) T	2,4,5-TP ...	9.204	8.654	1729.7E6	187.6E6	139.368	64.642 #
12) T	2,4,5-T	9.487	9.030	1793.1E6	479.0E6	149.290	165.468
13) T	2,4-DB	10.040	9.538	312.8E6	71723251	122.846	185.932 #
14) T	DINOSEB	11.200	9.872	213.5E6	91359789	26.725	50.029 #
15) T	Picloram	11.014	10.843	4138.1E6	1153.8E6	249.781	277.838
16) T	DCPA	11.469	10.798	3029.2E6	1037.2E6	179.646	240.584 #

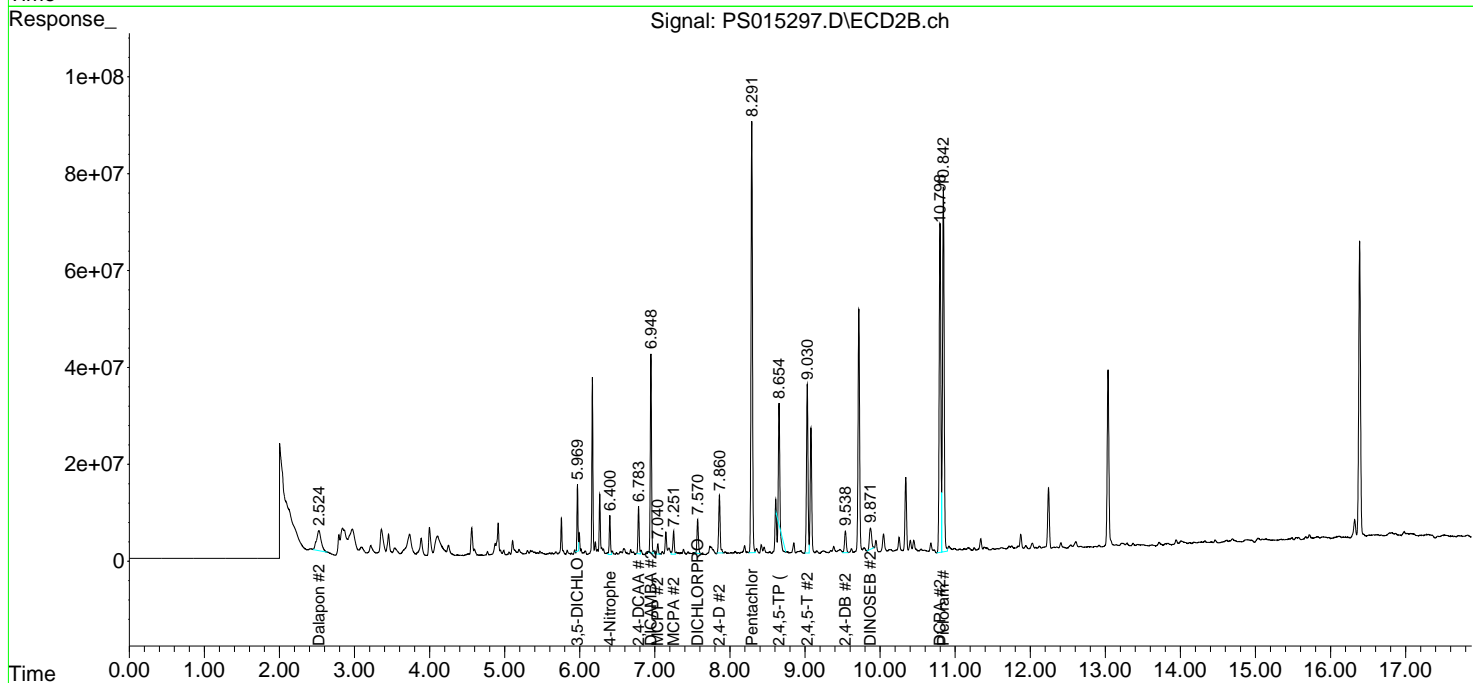
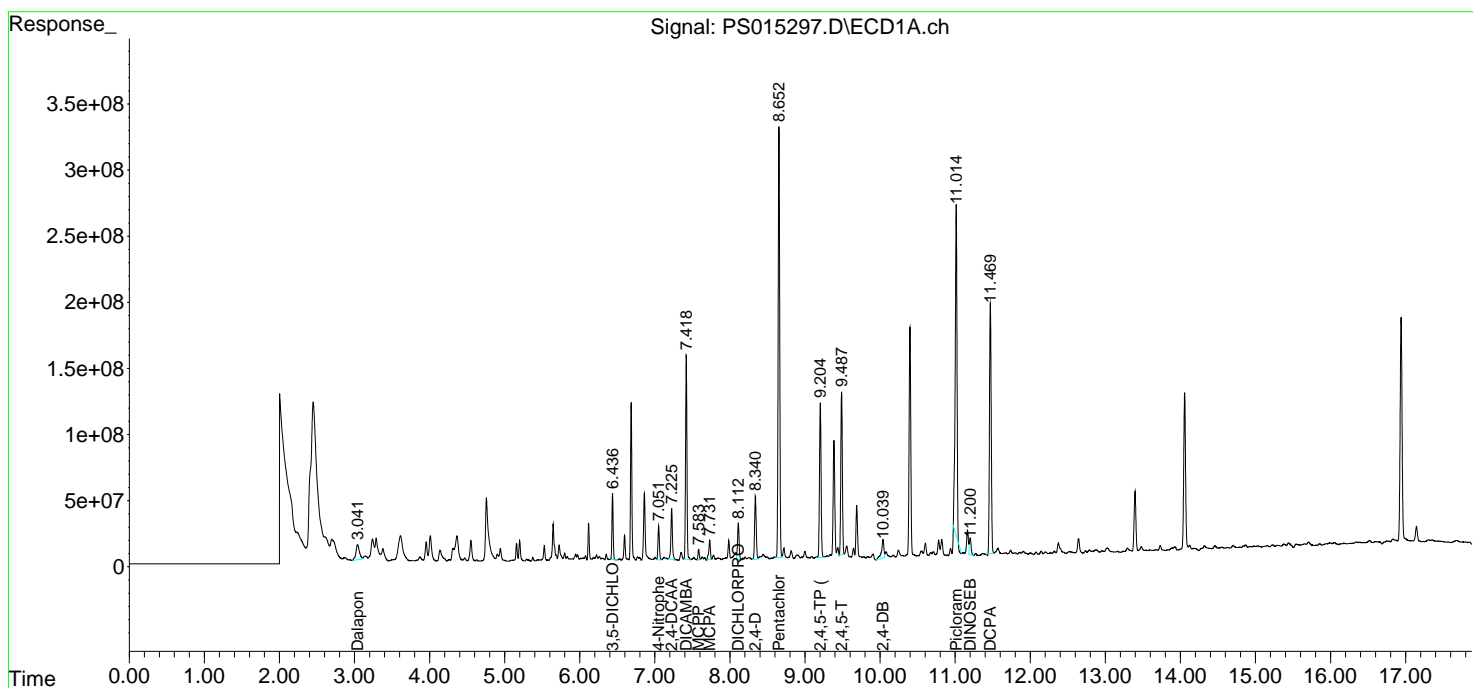
(f)=RT Delta > 1/2 Window (#)=Amounts differ by > 25% (m)=manual int.

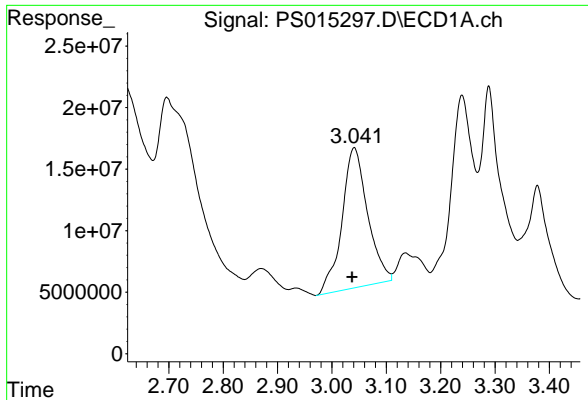
Data Path : Z:\pestpcbsrv\HPCHEM1\ECD_S\Data\PS060821\
 Data File : PS015297.D
 Signal(s) : Signal #1: ECD1A.ch Signal #2: ECD2B.ch
 Acq On : 08 Jun 2021 16:53
 Operator : DD\AJ
 Sample : M2598-04MSD
 Misc :
 ALS Vial : 13 Sample Multiplier: 1

Instrument :
 ECD_S
 ClientSampled :

Integration File signal 1: autoint1.e
 Integration File signal 2: autoint2.e
 Quant Time: Jun 09 04:12:56 2021
 Quant Method : Z:\pestpcbsrv\HPCHEM1\ECD_S\Method\PS052821.M
 Quant Title : 8080.M
 QLast Update : Fri May 28 14:34:22 2021
 Response via : Initial Calibration
 Integrator: ChemStation

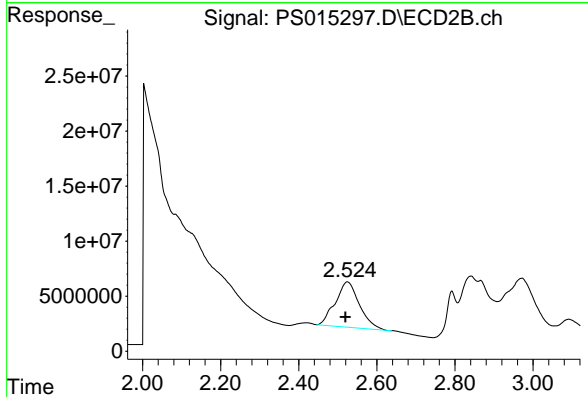
Volume Inj. : 2 µl
 Signal #1 Phase : Rtx-CLPesticides Signal #2 Phase: Rtx-CLPesticides2
 Signal #1 Info : 30M x 0.32mm x0.5 Signal #2 Info : 30M x 0.32mm x 0.25µm



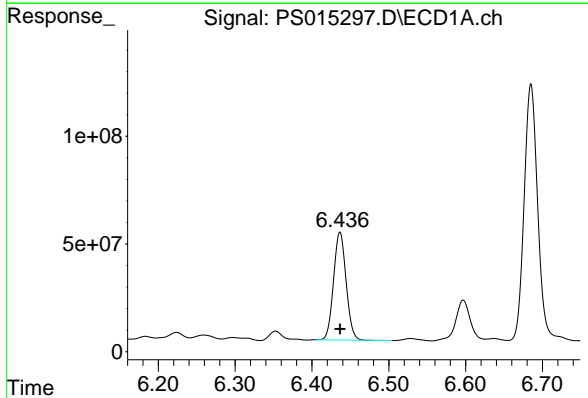


#1 Dalapon
 R.T.: 3.041 min
 Delta R.T.: 0.004 min
 Response: 373398404
 Conc: 142.06 ng/ml

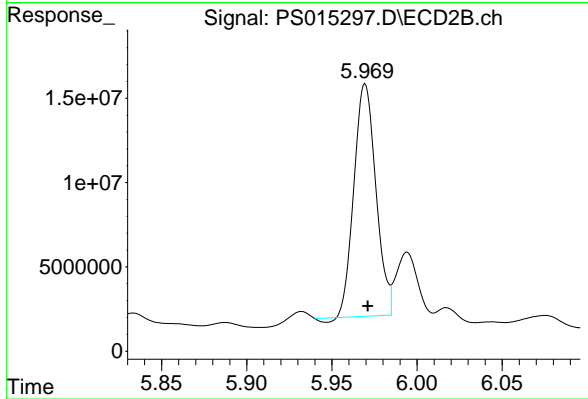
Instrument :
 ECD_S
 ClientSampled :



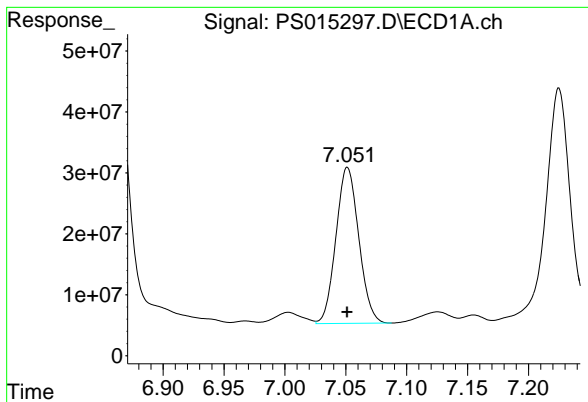
#1 Dalapon
 R.T.: 2.524 min
 Delta R.T.: 0.004 min
 Response: 176141057
 Conc: 269.14 ng/ml



#2 3,5-DICHLOROBENZOIC ACID
 R.T.: 6.436 min
 Delta R.T.: 0.000 min
 Response: 560683978
 Conc: 162.59 ng/ml

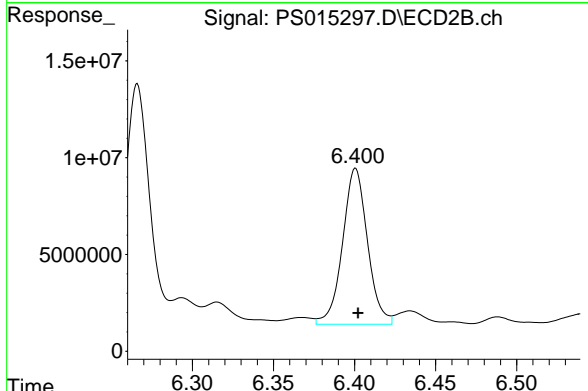


#2 3,5-DICHLOROBENZOIC ACID
 R.T.: 5.970 min
 Delta R.T.: -0.001 min
 Response: 123010189
 Conc: 152.27 ng/ml

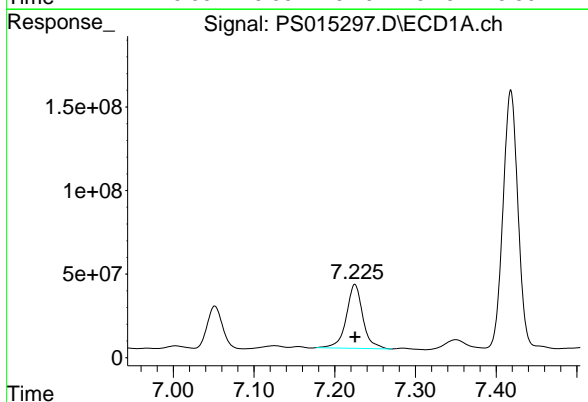


#3 4-Nitrophenol
R.T.: 7.051 min
Delta R.T.: 0.000 min
Response: 334246599
Conc: 237.11 ng/ml

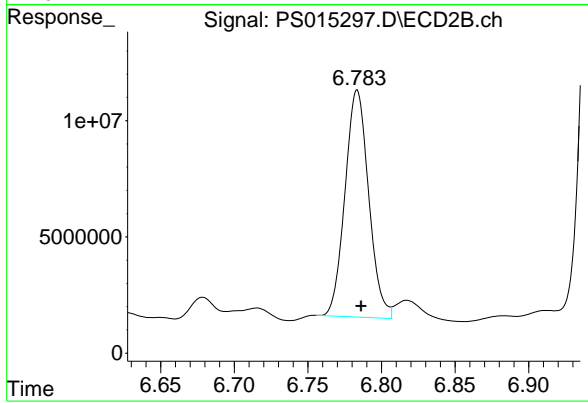
Instrument :
ECD_S
ClientSampleId :



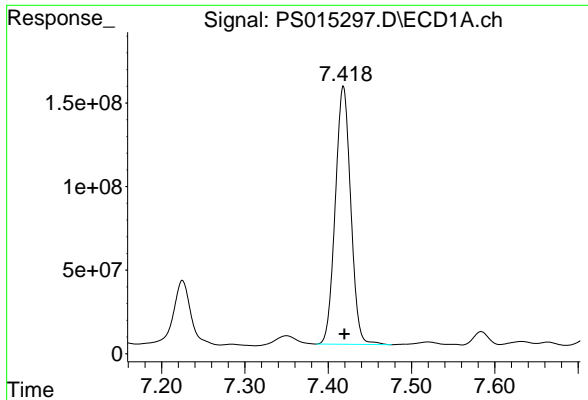
#3 4-Nitrophenol
R.T.: 6.401 min
Delta R.T.: -0.002 min
Response: 86197789
Conc: 270.91 ng/ml



#4 2,4-DCAA
R.T.: 7.225 min
Delta R.T.: 0.000 min
Response: 543871146
Conc: 215.79 ng/ml



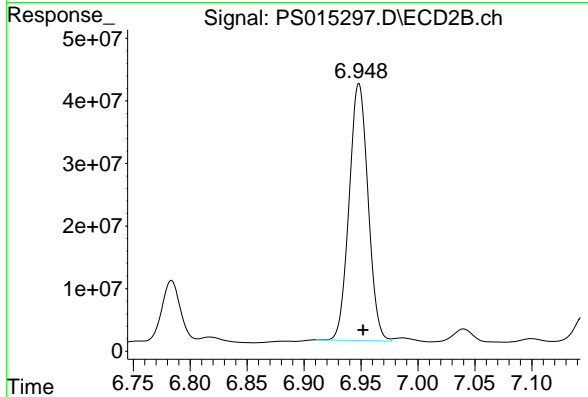
#4 2,4-DCAA
R.T.: 6.784 min
Delta R.T.: -0.003 min
Response: 109224094
Conc: 203.86 ng/ml



#5 DICAMBA

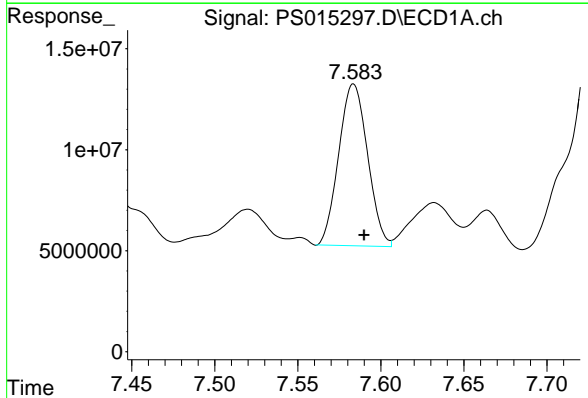
R.T.: 7.418 min
 Delta R.T.: -0.001 min
 Response: 1985940934
 Conc: 208.35 ng/ml

Instrument :
 ECD_S
 ClientSampleId :



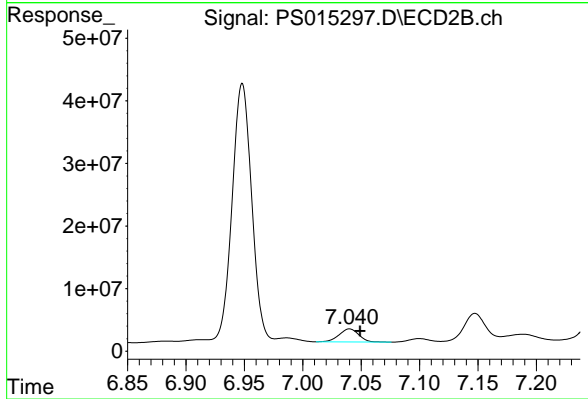
#5 DICAMBA

R.T.: 6.948 min
 Delta R.T.: -0.004 min
 Response: 474461664
 Conc: 214.40 ng/ml



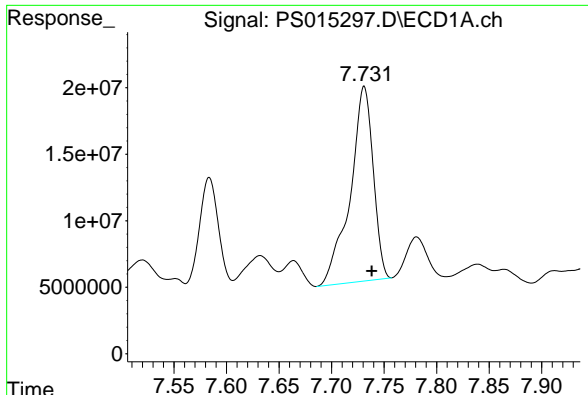
#6 MCPP

R.T.: 7.584 min
 Delta R.T.: -0.006 min
 Response: 96855269
 Conc: 13.46 ug/ml



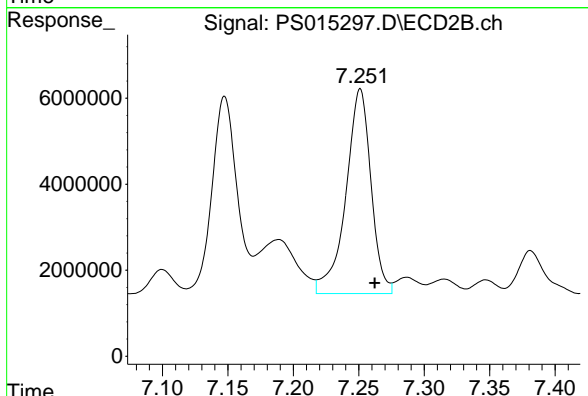
#6 MCPP

R.T.: 7.040 min
 Delta R.T.: -0.009 min
 Response: 24359611
 Conc: 13.79 ug/ml

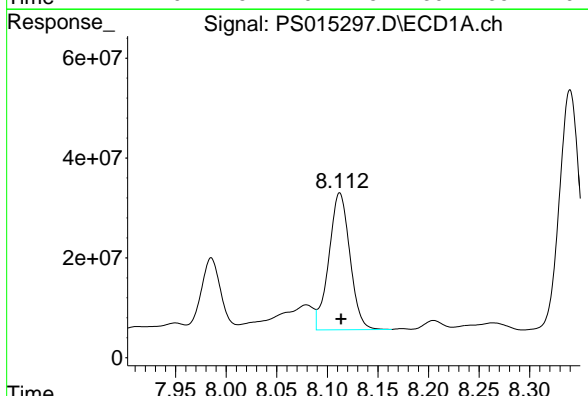


#7 MCPA
 R.T.: 7.731 min
 Delta R.T.: -0.007 min
 Response: 222901786
 Conc: 22.21 ug/ml

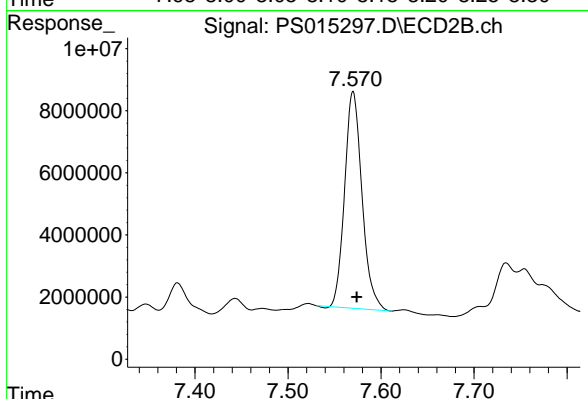
Instrument :
 ECD_S
 ClientSampled :



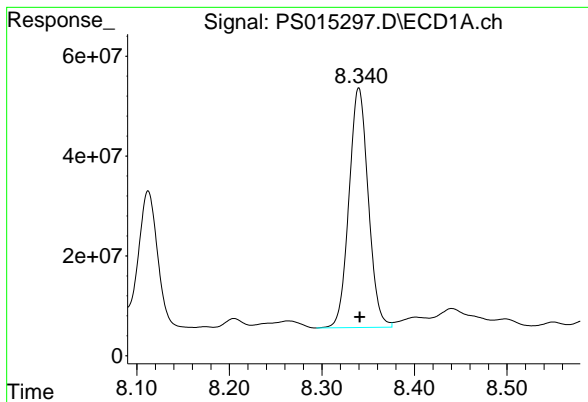
#7 MCPA
 R.T.: 7.251 min
 Delta R.T.: -0.011 min
 Response: 63753885
 Conc: 24.53 ug/ml



#8 DICHLORPROP
 R.T.: 8.112 min
 Delta R.T.: -0.001 min
 Response: 395772631
 Conc: 171.84 ng/ml

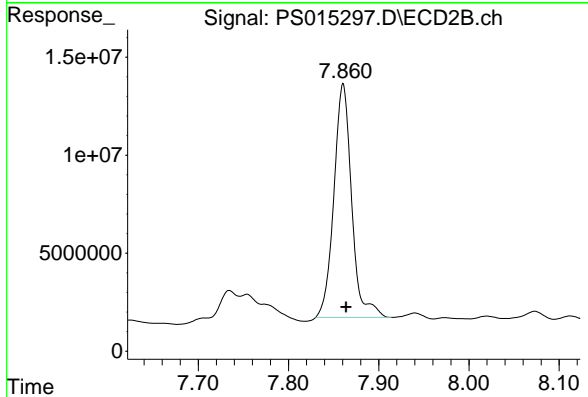


#8 DICHLORPROP
 R.T.: 7.570 min
 Delta R.T.: -0.004 min
 Response: 90519318
 Conc: 166.62 ng/ml

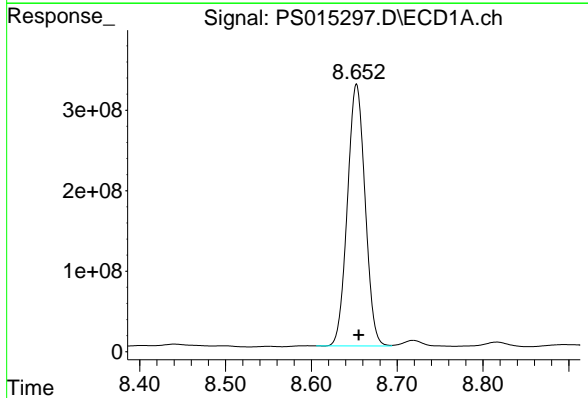


#9 2,4-D
 R.T.: 8.340 min
 Delta R.T.: -0.001 min
 Response: 694171622
 Conc: 272.43 ng/ml

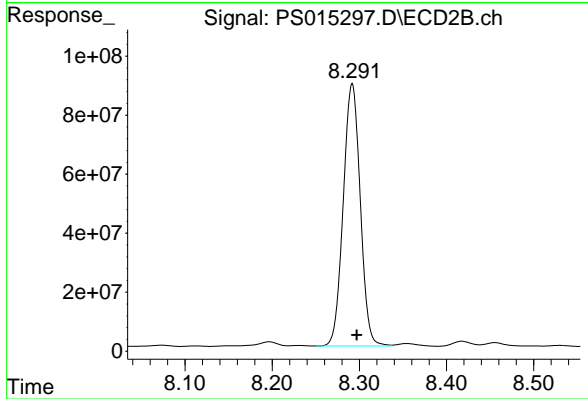
Instrument :
 ECD_S
 ClientSampleId :



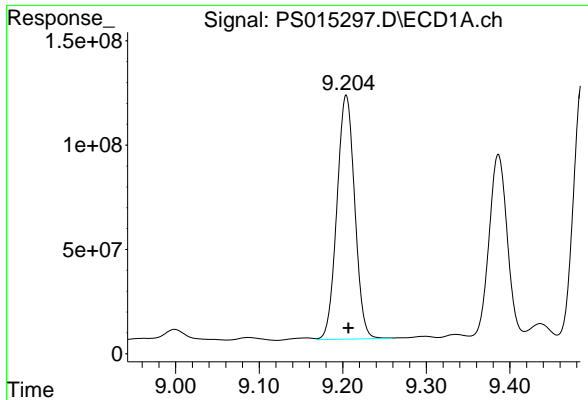
#9 2,4-D
 R.T.: 7.861 min
 Delta R.T.: -0.003 min
 Response: 163077769
 Conc: 253.22 ng/ml



#10 Pentachlorophenol
 R.T.: 8.653 min
 Delta R.T.: -0.003 min
 Response: 4660165411
 Conc: 143.96 ng/ml

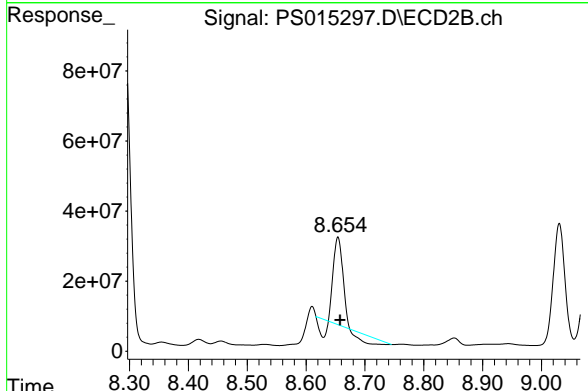


#10 Pentachlorophenol
 R.T.: 8.292 min
 Delta R.T.: -0.005 min
 Response: 1206686400
 Conc: 163.93 ng/ml

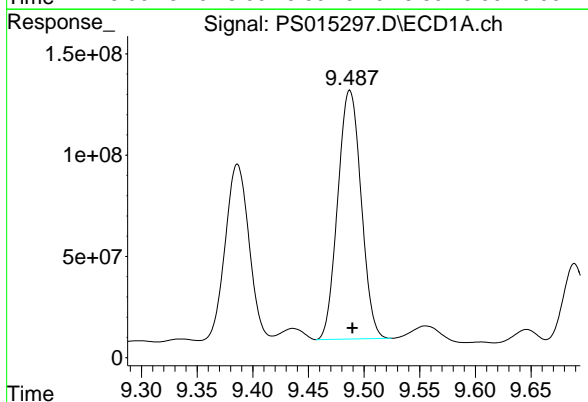


#11 2,4,5-TP (SILVEX)
 R.T.: 9.204 min
 Delta R.T.: -0.002 min
 Response: 1729702930
 Conc: 139.37 ng/ml

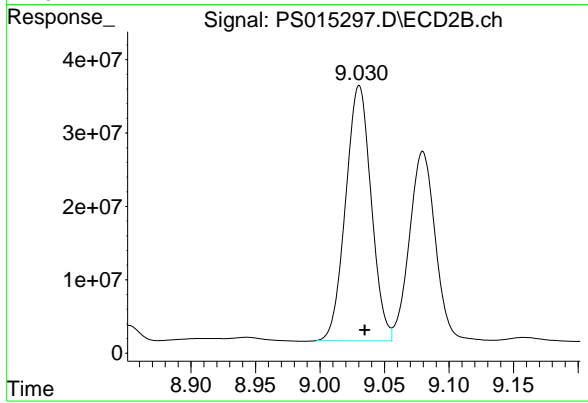
Instrument :
 ECD_S
 ClientSampleId :



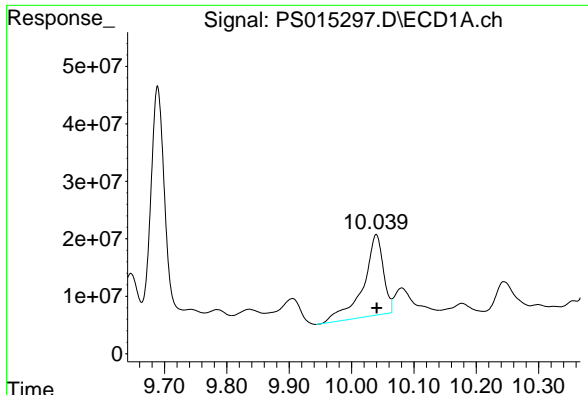
#11 2,4,5-TP (SILVEX)
 R.T.: 8.654 min
 Delta R.T.: -0.004 min
 Response: 187588465
 Conc: 64.64 ng/ml



#12 2,4,5-T
 R.T.: 9.487 min
 Delta R.T.: -0.002 min
 Response: 1793104611
 Conc: 149.29 ng/ml

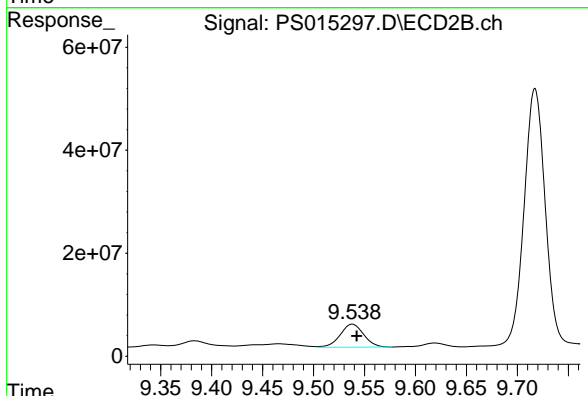


#12 2,4,5-T
 R.T.: 9.030 min
 Delta R.T.: -0.004 min
 Response: 479029548
 Conc: 165.47 ng/ml

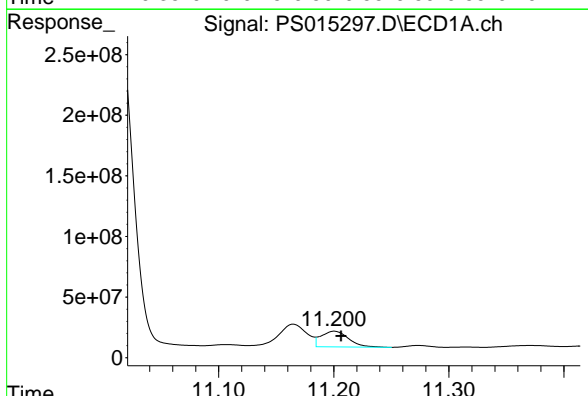


#13 2,4-DB
 R.T.: 10.040 min
 Delta R.T.: 0.000 min
 Response: 312830164
 Conc: 122.85 ng/ml

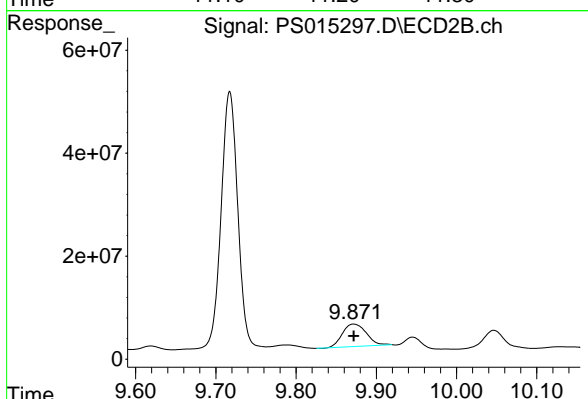
Instrument :
 ECD_S
 ClientSampleId :



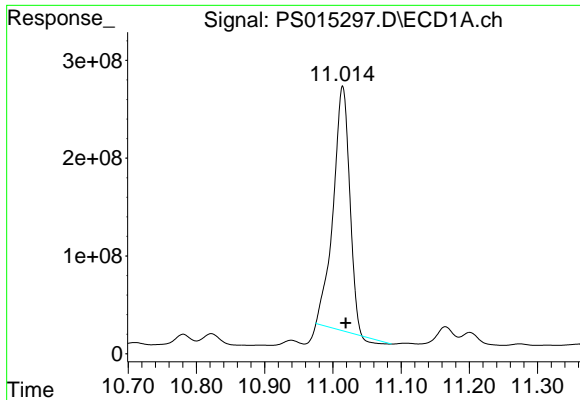
#13 2,4-DB
 R.T.: 9.538 min
 Delta R.T.: -0.005 min
 Response: 71723251
 Conc: 185.93 ng/ml



#14 DINOSEB
 R.T.: 11.200 min
 Delta R.T.: -0.006 min
 Response: 213525303
 Conc: 26.73 ng/ml

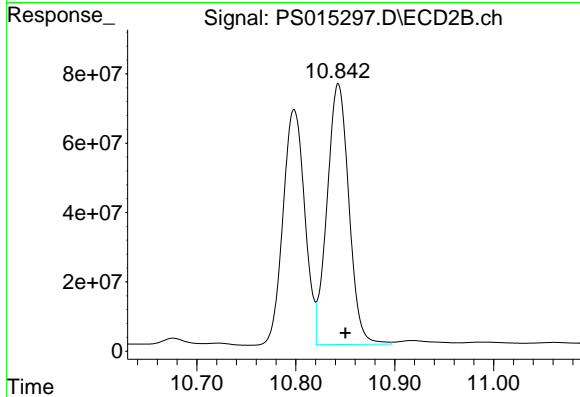


#14 DINOSEB
 R.T.: 9.872 min
 Delta R.T.: 0.000 min
 Response: 91359789
 Conc: 50.03 ng/ml

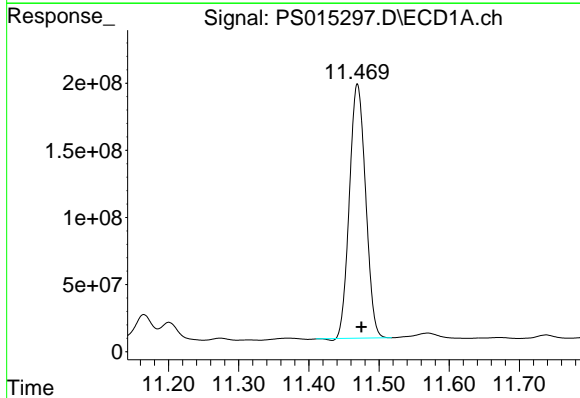


#15 Picloram
 R.T.: 11.014 min
 Delta R.T.: -0.005 min
 Response: 4138059420
 Conc: 249.78 ng/ml

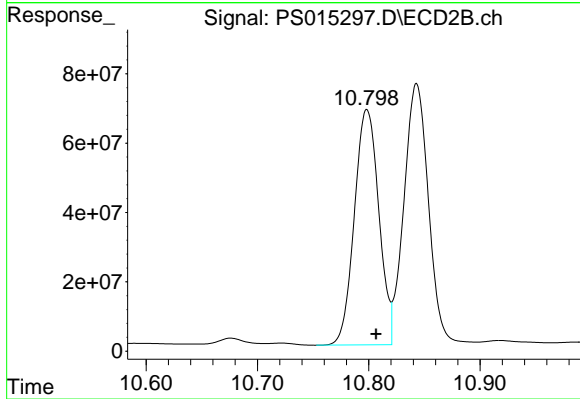
Instrument :
 ECD_S
 ClientSampled :



#15 Picloram
 R.T.: 10.843 min
 Delta R.T.: -0.007 min
 Response: 1153831497
 Conc: 277.84 ng/ml



#16 DCPA
 R.T.: 11.469 min
 Delta R.T.: -0.006 min
 Response: 3029202306
 Conc: 179.65 ng/ml



#16 DCPA
 R.T.: 10.798 min
 Delta R.T.: -0.008 min
 Response: 1037155180
 Conc: 240.58 ng/ml