

Data Path : Z:\pestpcbsrv\HPCHEM1\ECD\_S\Data\PS060822\  
 Data File : PS019624.D  
 Signal(s) : Signal #1: ECD1A.ch Signal #2: ECD2B.ch  
 Acq On : 08 Jun 2022 09:13  
 Operator : AJ\MA  
 Sample : HEXANE  
 Misc :  
 ALS Vial : 1 Sample Multiplier: 1

Instrument :  
 ECD\_S  
 ClientSampleId :

Integration File signal 1: autoint1.e  
 Integration File signal 2: autoint2.e  
 Quant Time: Jun 08 12:02:24 2022  
 Quant Method : Z:\pestpcbsrv\HPCHEM1\ECD\_S\Method\PS052422.M  
 Quant Title : 8080.M  
 QLast Update : Wed May 25 02:05:34 2022  
 Response via : Initial Calibration  
 Integrator: ChemStation

Volume Inj. : 2 µl  
 Signal #1 Phase : Rtx-CLPesticides Signal #2 Phase: Rtx-CLPesticides2  
 Signal #1 Info : 30M x 0.32mm x0.5 Signal #2 Info : 30M x 0.32mm x 0.25µm

Compound	RT#1	RT#2	Resp#1	Resp#2	ng/ml	ng/ml
----------	------	------	--------	--------	-------	-------

System Monitoring Compounds

Target Compounds

1) T	Dalapon	3.031	0.000	2946031	0	<MDL	N.D.	#
5) T	DICAMBA	0.000	6.963	0	459327	N.D.	<MDL	
6) T	MCPP	7.567	0.000	1284528	0	<MDL	N.D.	#
11) T	2,4,5-TP ...	9.127f	0.000	526440	0	<MDL	N.D.	#
13) T	2,4-DB	10.074f	0.000	6544529	0	1.618	N.D.	#
14) T	DINOSEB	11.138	0.000	8651411	0	<MDL	N.D.	#
15) T	Picloram	0.000	10.779f	0	77726	N.D.	<MDL	
16) T	DCPA	11.427	10.779	1776603	77726	<MDL	<MDL	#

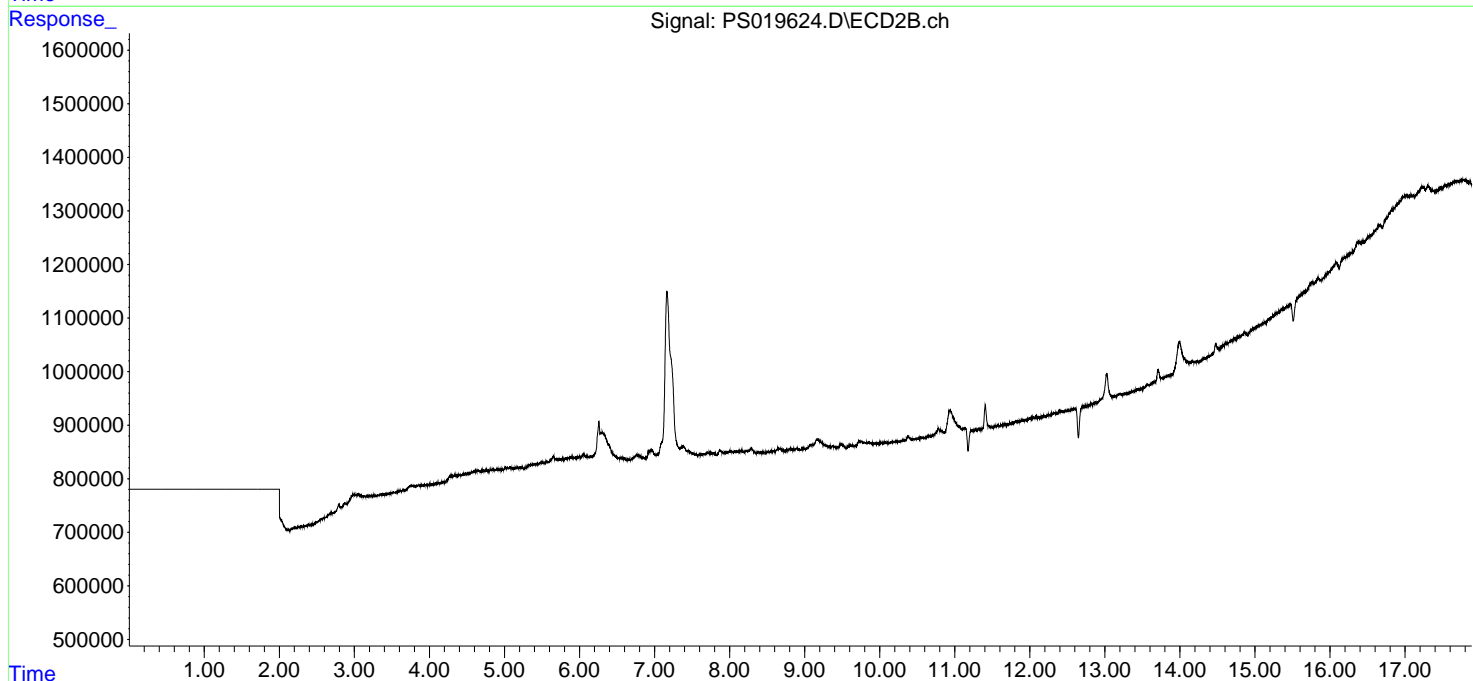
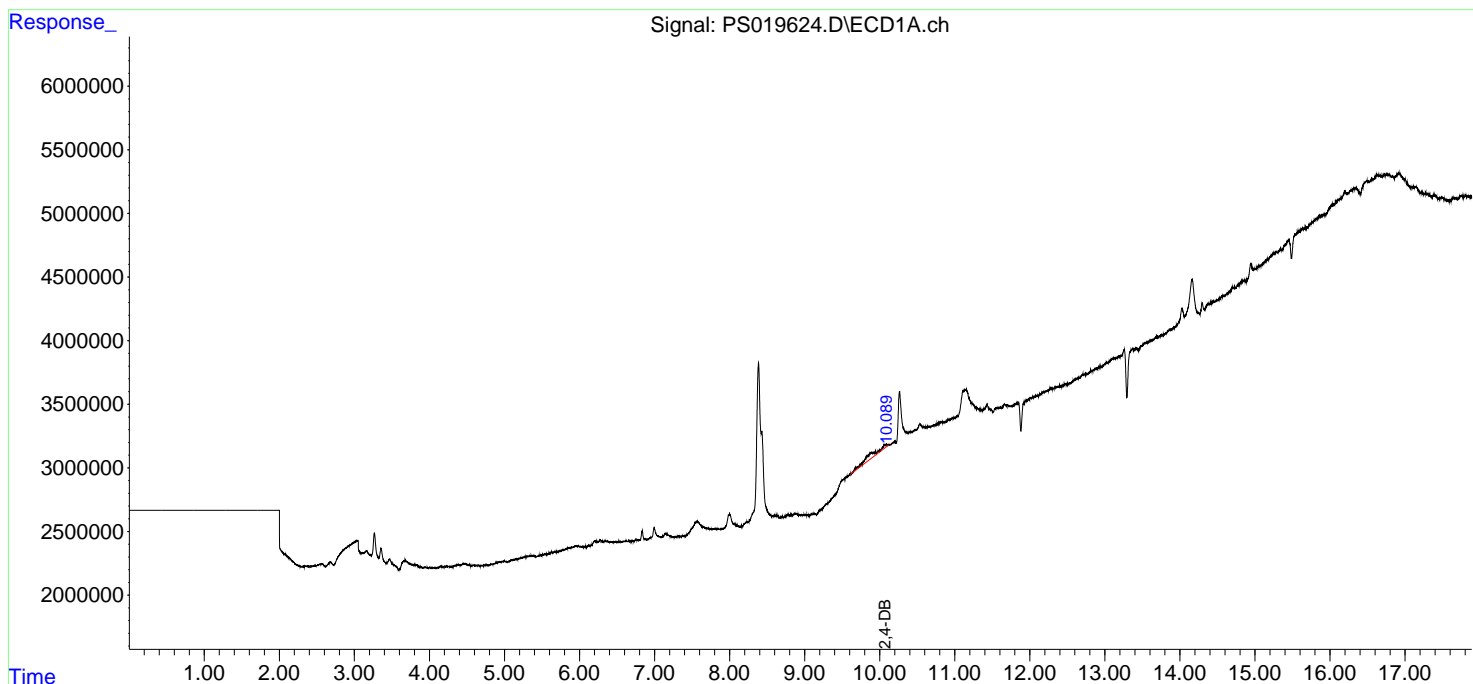
(f)=RT Delta > 1/2 Window (#)=Amounts differ by > 25% (m)=manual int.

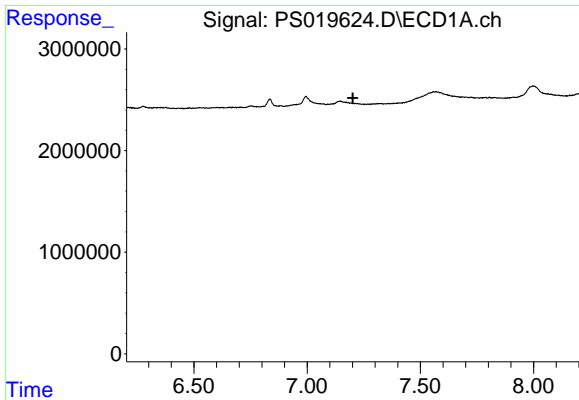
Data Path : Z:\pestpcbsrv\HPCHEM1\ECD\_S\Data\PS060822\  
 Data File : PS019624.D  
 Signal(s) : Signal #1: ECD1A.ch Signal #2: ECD2B.ch  
 Acq On : 08 Jun 2022 09:13  
 Operator : AJ\MA  
 Sample : HEXANE  
 Misc :  
 ALS Vial : 1 Sample Multiplier: 1

Instrument :  
 ECD\_S  
 ClientSampleId :

Integration File signal 1: autoint1.e  
 Integration File signal 2: autoint2.e  
 Quant Time: Jun 08 12:02:24 2022  
 Quant Method : Z:\pestpcbsrv\HPCHEM1\ECD\_S\Method\PS052422.M  
 Quant Title : 8080.M  
 QLast Update : Wed May 25 02:05:34 2022  
 Response via : Initial Calibration  
 Integrator: ChemStation

Volume Inj. : 2 µl  
 Signal #1 Phase : Rtx-CLPesticides Signal #2 Phase: Rtx-CLPesticides2  
 Signal #1 Info : 30M x 0.32mm x 0.5 Signal #2 Info : 30M x 0.32mm x 0.25µm

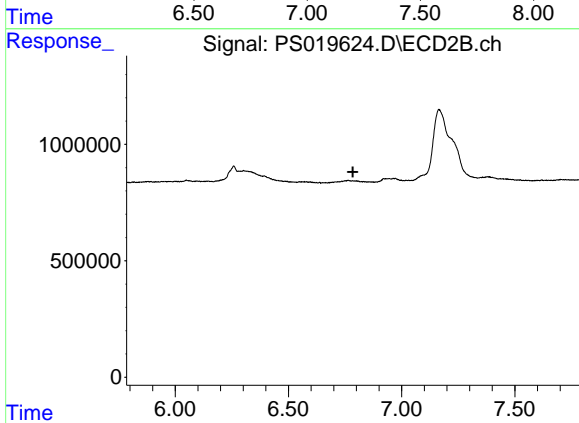




#4 2,4-DCAA

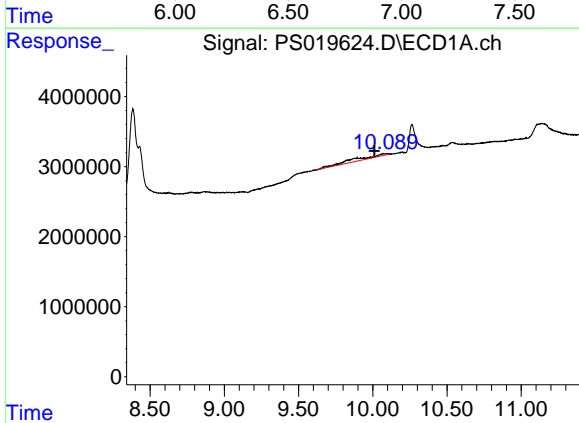
R.T.: 0.000 min  
 Exp R.T.: 7.202 min  
 Response: 0  
 Conc: N.D.

Instrument :  
 ECD\_S  
 ClientSampleId :



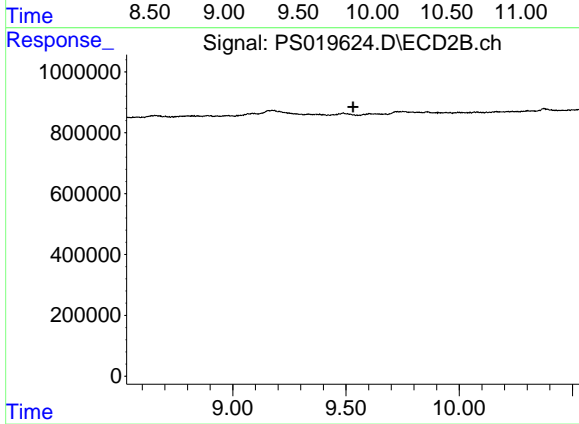
#4 2,4-DCAA

R.T.: 0.000 min  
 Exp R.T.: 6.785 min  
 Response: 0  
 Conc: N.D.



#13 2,4-DB

R.T.: 10.074 min  
 Delta R.T.: 0.063 min  
 Response: 6544529  
 Conc: 1.62 ng/ml



#13 2,4-DB

R.T.: 0.000 min  
 Exp R.T.: 9.531 min  
 Response: 0  
 Conc: N.D.