

Data Path : Z:\pestpcbsrv\HPCHEM1\ECD_S\Data\PS060822\
 Data File : PS019638.D
 Signal(s) : Signal #1: ECD1A.ch Signal #2: ECD2B.ch
 Acq On : 08 Jun 2022 15:21
 Operator : AJ\MA
 Sample : HSTDCCC750
 Misc :
 ALS Vial : 3 Sample Multiplier: 1

Instrument :
 ECD_S
 ClientSampleId :

Integration File signal 1: autoint1.e
 Integration File signal 2: autoint2.e
 Quant Time: Jun 08 18:05:26 2022
 Quant Method : Z:\pestpcbsrv\HPCHEM1\ECD_S\Method\PS052422.M
 Quant Title : 8080.M
 QLast Update : Wed May 25 02:05:34 2022
 Response via : Initial Calibration
 Integrator: ChemStation

Volume Inj. : 2 µl
 Signal #1 Phase : Rtx-CLPesticides Signal #2 Phase: Rtx-CLPesticides2
 Signal #1 Info : 30M x 0.32mm x0.5 Signal #2 Info : 30M x 0.32mm x 0.25µm

	Compound	RT#1	RT#2	Resp#1	Resp#2	ng/ml	ng/ml

System Monitoring Compounds							
4) S	2,4-DCAA	7.200	6.783	1777.0E6	673.5E6	740.655	869.226
Target Compounds							
1) T	Dalapon	3.013	2.522	3123.5E6	678.9E6	616.222	676.594
2) T	3,5-DICHL...	6.413	5.962	2180.7E6	847.8E6	689.947	707.273
3) T	4-Nitroph...	7.032	6.401	742.6E6	294.1E6	756.690	687.202
5) T	DICAMBA	7.389	6.947	6598.5E6	2457.9E6	694.746	719.010
6) T	MCPD	7.559	7.044	525.3E6	193.3E6	69.992	71.408
7) T	MCPA	7.708	7.256	739.0E6	268.6E6	68.398	69.893
8) T	DICHLORPROP	8.080	7.567	1731.6E6	624.4E6	676.237	706.829
9) T	2,4-D	8.310	7.859	2021.5E6	749.7E6	706.929	702.879
10) T	Pentachlo...	8.617	8.283	23996.3E6	8396.4E6	693.759	720.332
11) T	2,4,5-TP ...	9.167	8.644	10587.2E6	3626.8E6	674.300	721.450
12) T	2,4,5-T	9.453	9.022	12477.0E6	3383.0E6	662.978	719.287
13) T	2,4-DB	10.004	9.527	2843.6E6	442.8E6	702.814	716.563
14) T	DINOSEB	11.159	9.852	11125.7E6	2559.9E6	719.313	720.569
15) T	Picloram	10.983	10.833	20892.7E6	4388.3E6	703.998	682.228
16) T	DCPA	11.427	10.781	17500.5E6	4460.3E6	726.041	722.613

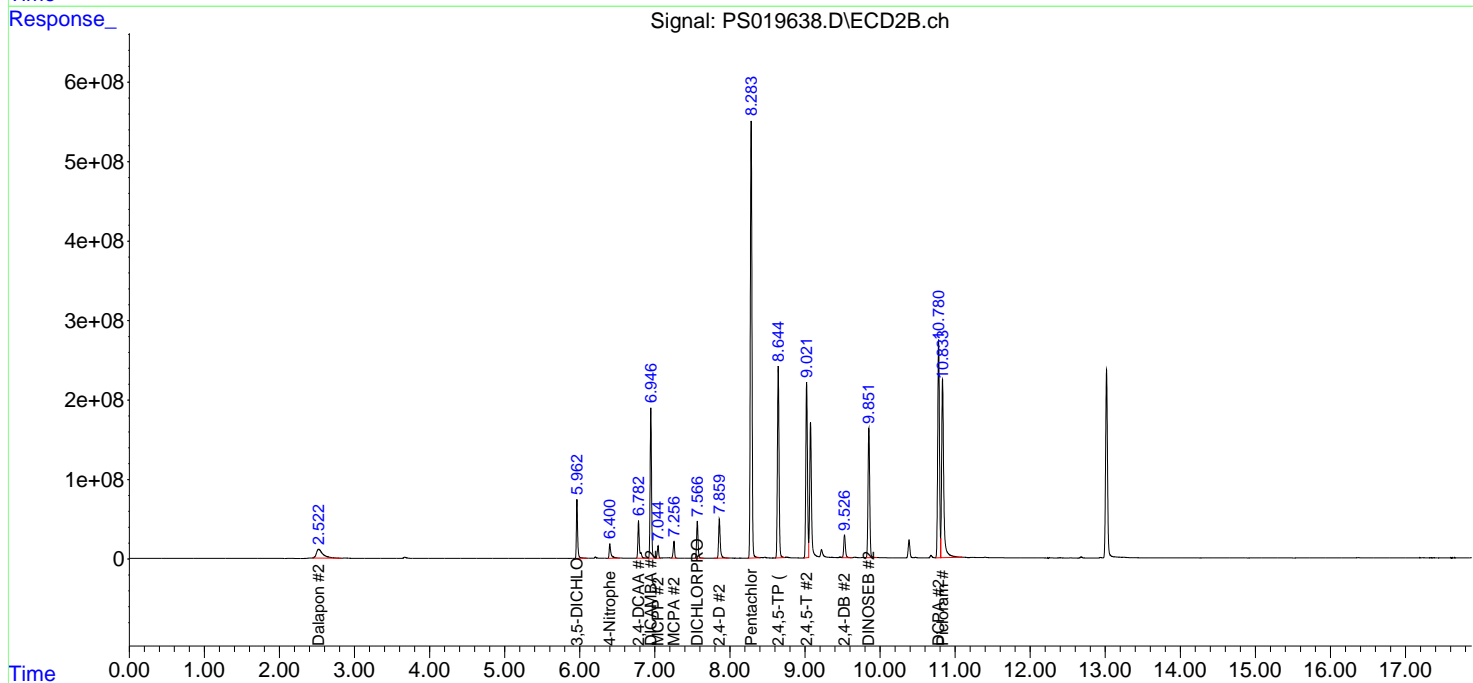
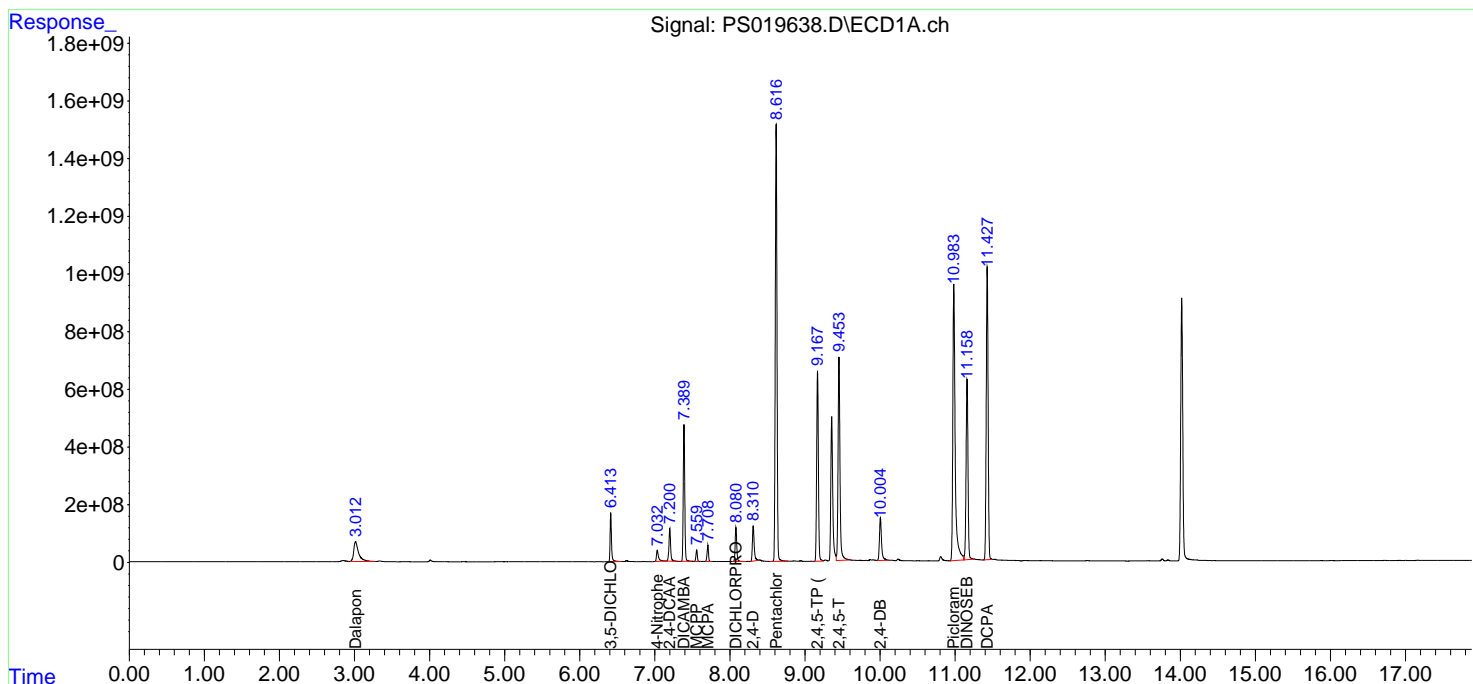
(f)=RT Delta > 1/2 Window (#)=Amounts differ by > 25% (m)=manual int.

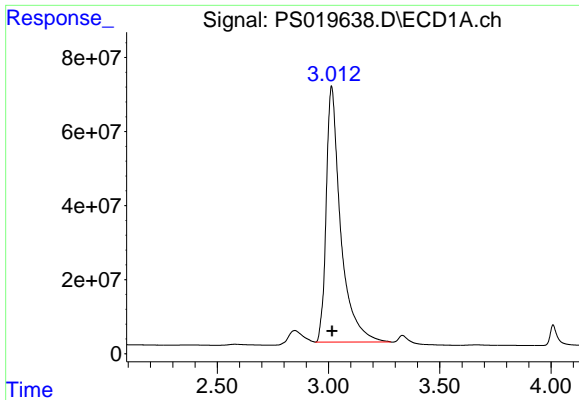
Data Path : Z:\pestpcbsrv\HPCHEM1\ECD_S\Data\PS060822\
 Data File : PS019638.D
 Signal(s) : Signal #1: ECD1A.ch Signal #2: ECD2B.ch
 Acq On : 08 Jun 2022 15:21
 Operator : AJ\MA
 Sample : HSTDCCC750
 Misc :
 ALS Vial : 3 Sample Multiplier: 1

Instrument :
 ECD_S
 ClientSampleId :

Integration File signal 1: autoint1.e
 Integration File signal 2: autoint2.e
 Quant Time: Jun 08 18:05:26 2022
 Quant Method : Z:\pestpcbsrv\HPCHEM1\ECD_S\Method\PS052422.M
 Quant Title : 8080.M
 QLast Update : Wed May 25 02:05:34 2022
 Response via : Initial Calibration
 Integrator: ChemStation

Volume Inj. : 2 µl
 Signal #1 Phase : Rtx-CLPesticides Signal #2 Phase: Rtx-CLPesticides2
 Signal #1 Info : 30M x 0.32mm x0.5 Signal #2 Info : 30M x 0.32mm x 0.25µm

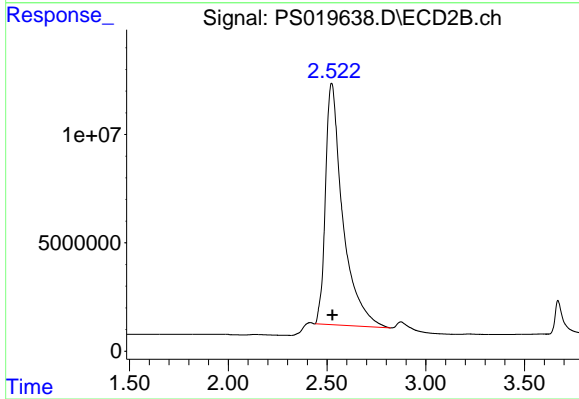




#1 Dalapon

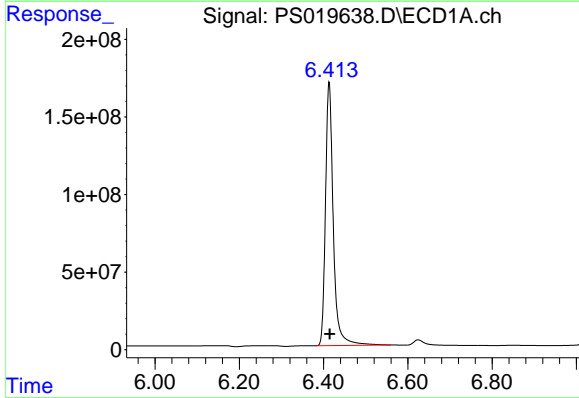
R.T.: 3.013 min
 Delta R.T.: -0.003 min
 Response: 3123485256
 Conc: 616.22 ng/ml

Instrument :
 ECD_S
 ClientSampleId :



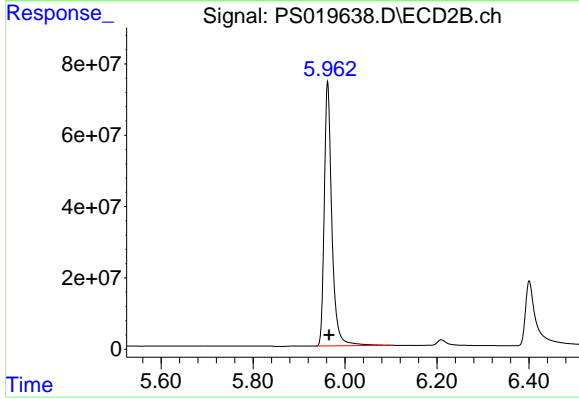
#1 Dalapon

R.T.: 2.522 min
 Delta R.T.: -0.006 min
 Response: 678922688
 Conc: 676.59 ng/ml



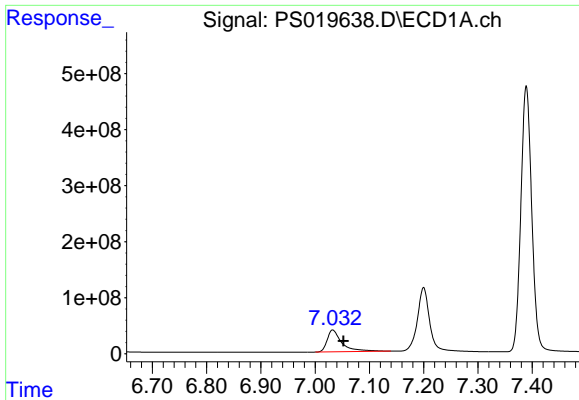
#2 3,5-DICHLOROBENZOIC ACID

R.T.: 6.413 min
 Delta R.T.: -0.001 min
 Response: 2180670446
 Conc: 689.95 ng/ml



#2 3,5-DICHLOROBENZOIC ACID

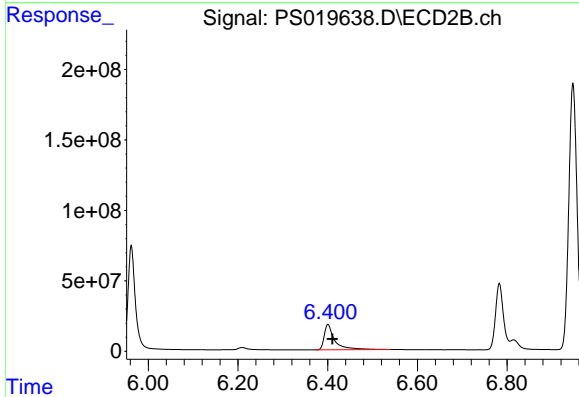
R.T.: 5.962 min
 Delta R.T.: -0.003 min
 Response: 847790087
 Conc: 707.27 ng/ml



#3 4-Nitrophenol

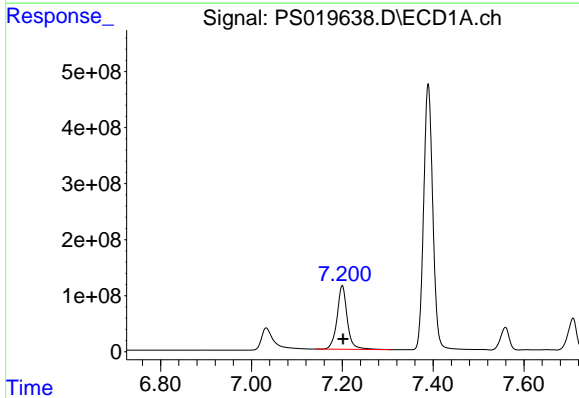
R.T.: 7.032 min
 Delta R.T.: -0.020 min
 Response: 742552992
 Conc: 756.69 ng/ml

Instrument :
 ECD_S
 ClientSampleId :



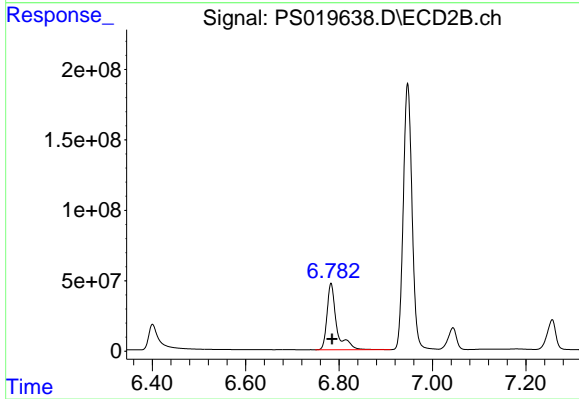
#3 4-Nitrophenol

R.T.: 6.401 min
 Delta R.T.: -0.010 min
 Response: 294147112
 Conc: 687.20 ng/ml



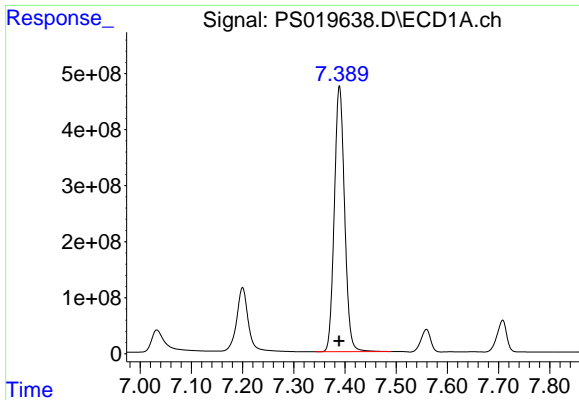
#4 2,4-DCAA

R.T.: 7.200 min
 Delta R.T.: -0.002 min
 Response: 1776954123
 Conc: 740.65 ng/ml



#4 2,4-DCAA

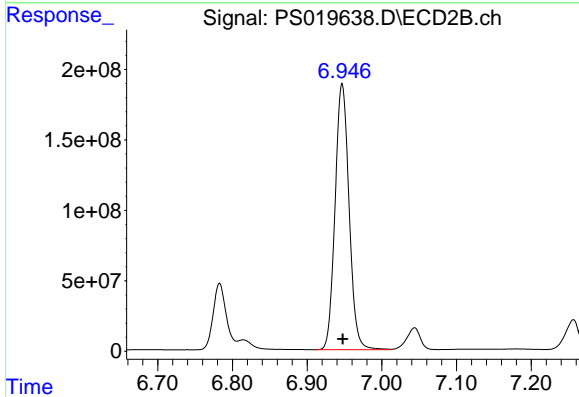
R.T.: 6.783 min
 Delta R.T.: -0.002 min
 Response: 673537150
 Conc: 869.23 ng/ml



#5 DICAMBA

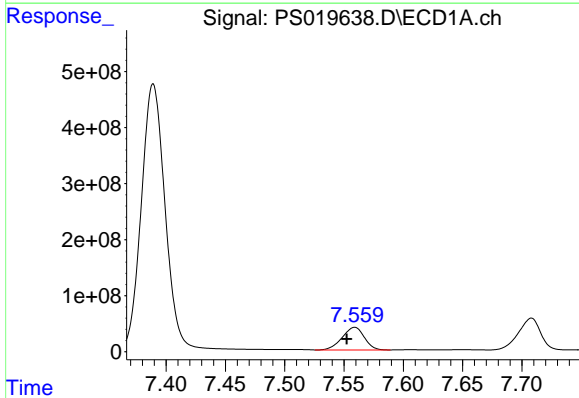
R.T.: 7.389 min
 Delta R.T.: 0.000 min
 Response: 6598530453
 Conc: 694.75 ng/ml

Instrument :
 ECD_S
 ClientSampleId :



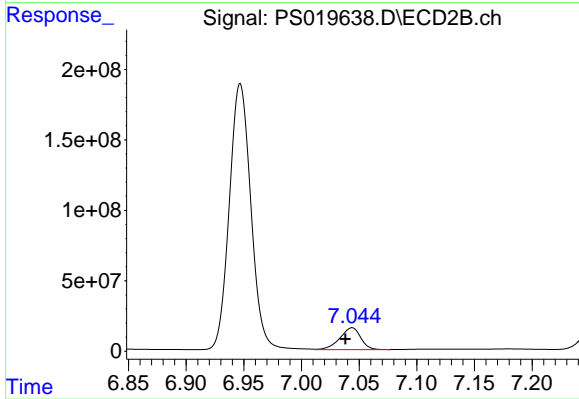
#5 DICAMBA

R.T.: 6.947 min
 Delta R.T.: 0.000 min
 Response: 2457895649
 Conc: 719.01 ng/ml



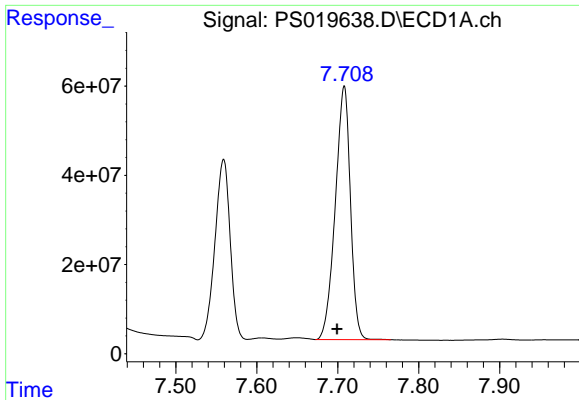
#6 MCP

R.T.: 7.559 min
 Delta R.T.: 0.007 min
 Response: 525329356
 Conc: 69.99 ug/ml



#6 MCP

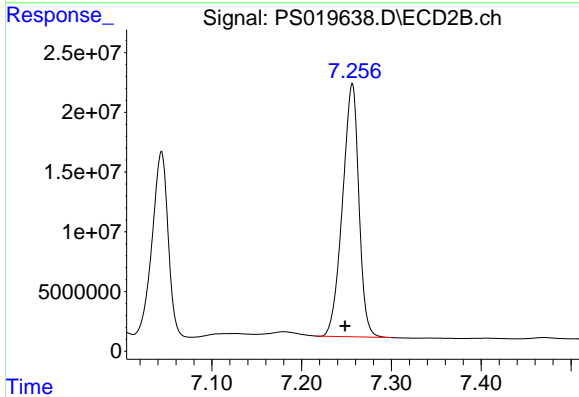
R.T.: 7.044 min
 Delta R.T.: 0.006 min
 Response: 193301319
 Conc: 71.41 ug/ml



#7 MCPA

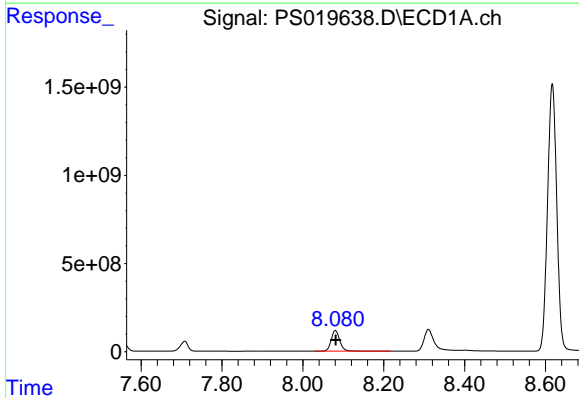
R.T.: 7.708 min
 Delta R.T.: 0.009 min
 Response: 738961621
 Conc: 68.40 ug/ml

Instrument :
 ECD_S
 ClientSampleId :



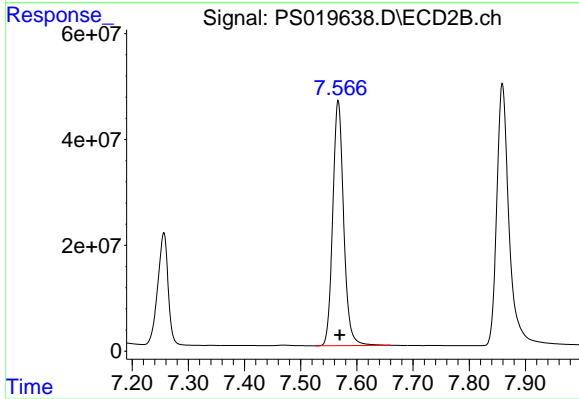
#7 MCPA

R.T.: 7.256 min
 Delta R.T.: 0.008 min
 Response: 268569435
 Conc: 69.89 ug/ml



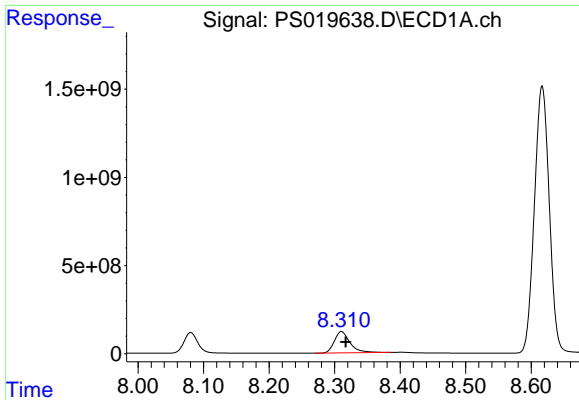
#8 DICHLORPROP

R.T.: 8.080 min
 Delta R.T.: 0.000 min
 Response: 1731580658
 Conc: 676.24 ng/ml



#8 DICHLORPROP

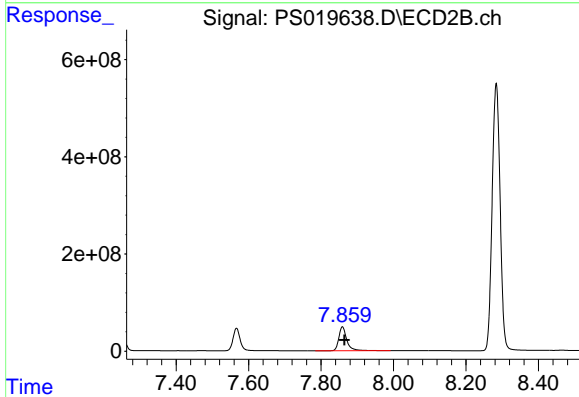
R.T.: 7.567 min
 Delta R.T.: -0.002 min
 Response: 624392983
 Conc: 706.83 ng/ml



#9 2,4-D

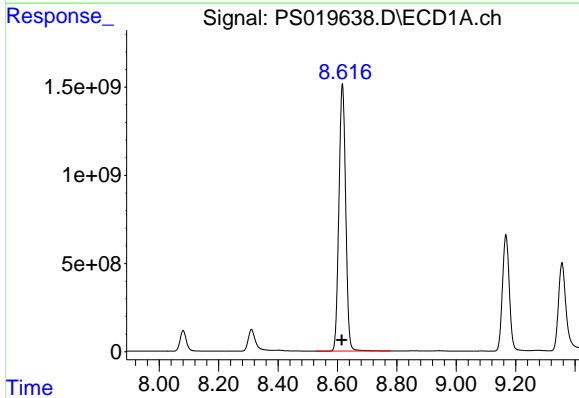
R.T.: 8.310 min
 Delta R.T.: -0.007 min
 Response: 2021456136
 Conc: 706.93 ng/ml

Instrument :
 ECD_S
 ClientSampleId :



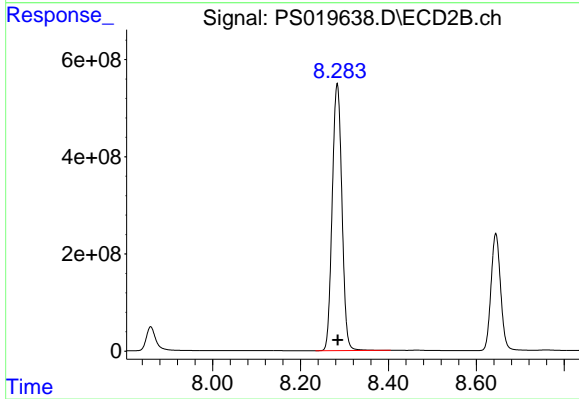
#9 2,4-D

R.T.: 7.859 min
 Delta R.T.: -0.005 min
 Response: 749710023
 Conc: 702.88 ng/ml



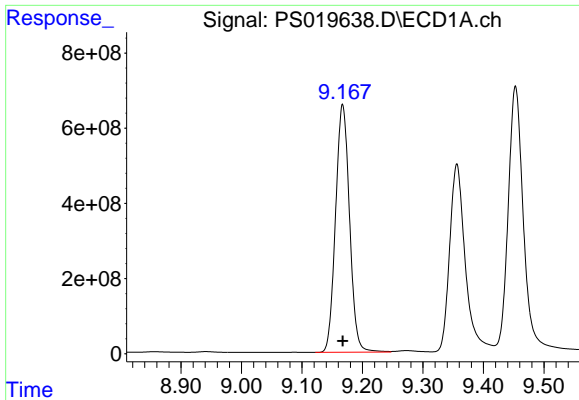
#10 Pentachlorophenol

R.T.: 8.617 min
 Delta R.T.: 0.002 min
 Response: 23996333837
 Conc: 693.76 ng/ml



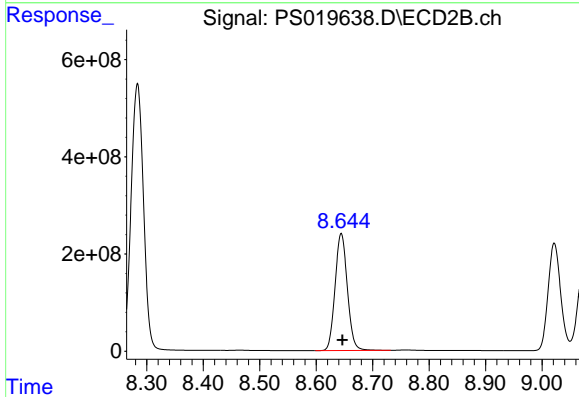
#10 Pentachlorophenol

R.T.: 8.283 min
 Delta R.T.: 0.000 min
 Response: 8396360520
 Conc: 720.33 ng/ml

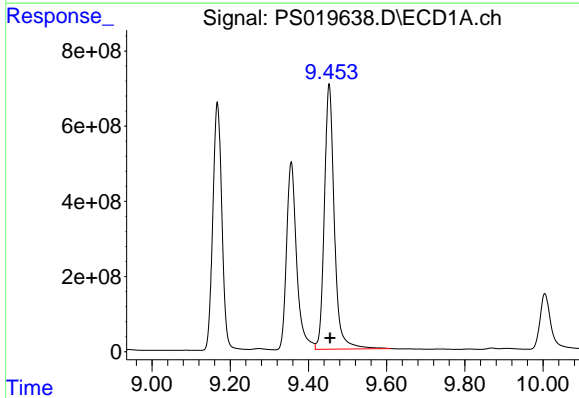


#11 2,4,5-TP (SILVEX)
 R.T.: 9.167 min
 Delta R.T.: 0.000 min
 Response: 10587155614
 Conc: 674.30 ng/ml

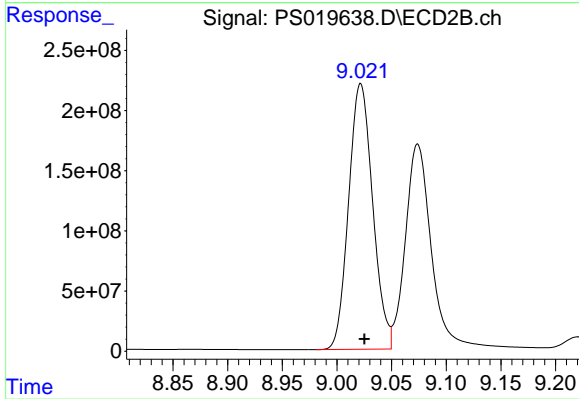
Instrument :
 ECD_S
 ClientSampleId :



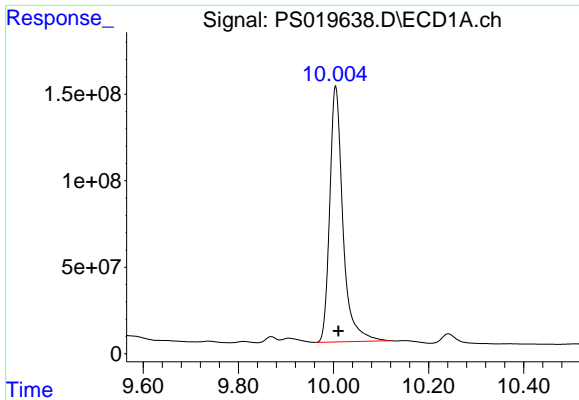
#11 2,4,5-TP (SILVEX)
 R.T.: 8.644 min
 Delta R.T.: -0.002 min
 Response: 3626845929
 Conc: 721.45 ng/ml



#12 2,4,5-T
 R.T.: 9.453 min
 Delta R.T.: -0.002 min
 Response: 12477024682
 Conc: 662.98 ng/ml



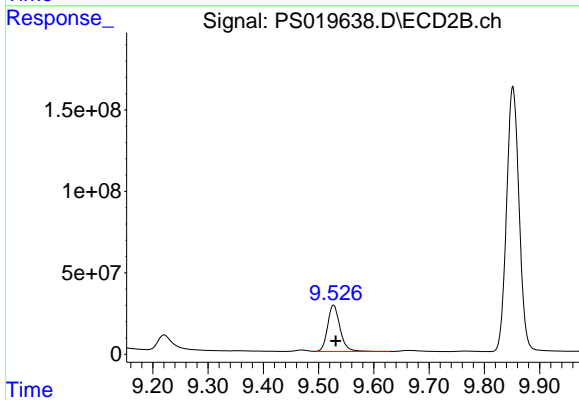
#12 2,4,5-T
 R.T.: 9.022 min
 Delta R.T.: -0.004 min
 Response: 3382955674
 Conc: 719.29 ng/ml



#13 2,4-DB

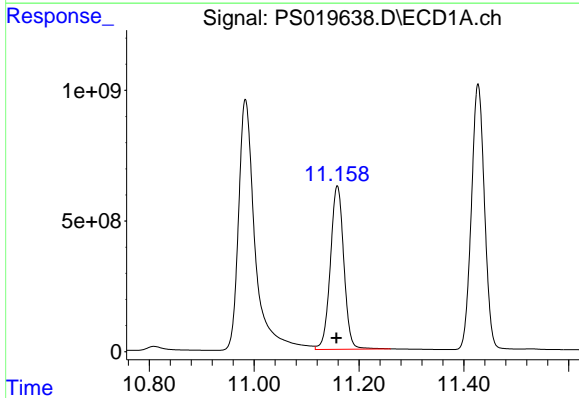
R.T.: 10.004 min
 Delta R.T.: -0.006 min
 Response: 2843599030
 Conc: 702.81 ng/ml

Instrument :
 ECD_S
 ClientSampleId :



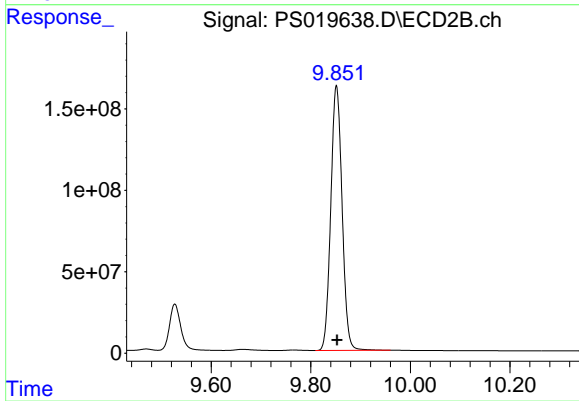
#13 2,4-DB

R.T.: 9.527 min
 Delta R.T.: -0.004 min
 Response: 442810900
 Conc: 716.56 ng/ml



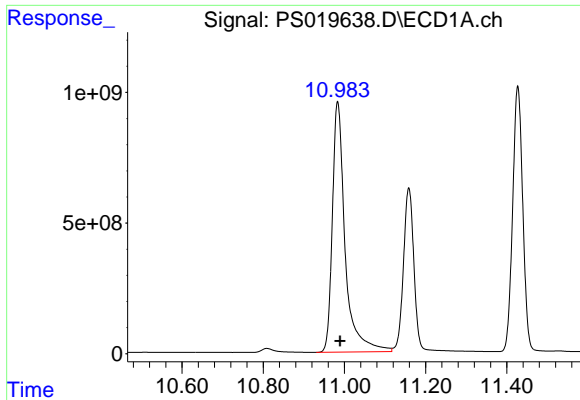
#14 DINOSEB

R.T.: 11.159 min
 Delta R.T.: 0.002 min
 Response: 11125727820
 Conc: 719.31 ng/ml



#14 DINOSEB

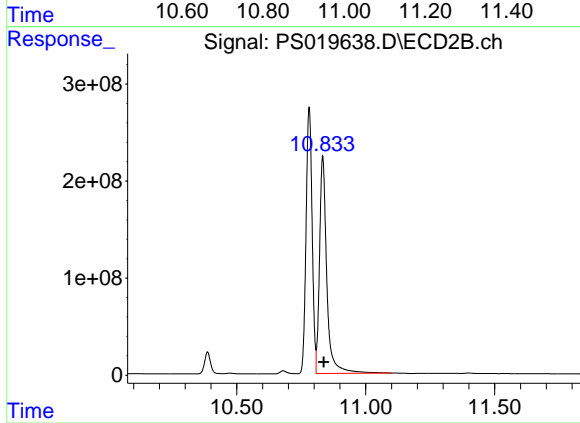
R.T.: 9.852 min
 Delta R.T.: -0.001 min
 Response: 2559906810
 Conc: 720.57 ng/ml



#15 Picloram

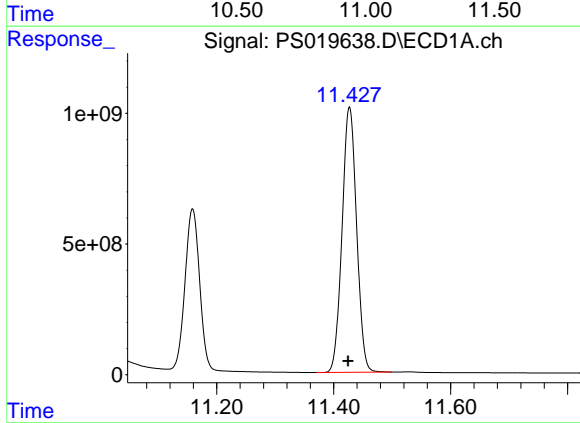
R.T.: 10.983 min
 Delta R.T.: -0.006 min
 Response: 20892737762
 Conc: 704.00 ng/ml

Instrument :
 ECD_S
 ClientSampleId :



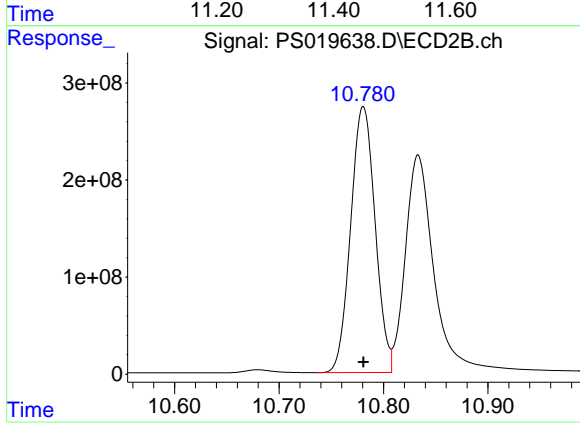
#15 Picloram

R.T.: 10.833 min
 Delta R.T.: -0.004 min
 Response: 4388263126
 Conc: 682.23 ng/ml



#16 DCPA

R.T.: 11.427 min
 Delta R.T.: 0.003 min
 Response: 17500498576
 Conc: 726.04 ng/ml



#16 DCPA

R.T.: 10.781 min
 Delta R.T.: 0.000 min
 Response: 4460316440
 Conc: 722.61 ng/ml