

Data Path : Z:\pestpcbsrv\HPCHEM1\ECD_S\Data\PS060822\
 Data File : PS019639.D
 Signal(s) : Signal #1: ECD1A.ch Signal #2: ECD2B.ch
 Acq On : 08 Jun 2022 15:46
 Operator : AJ\MA
 Sample : PB145395BL
 Misc :
 ALS Vial : 14 Sample Multiplier: 1

Instrument :
 ECD_S
 ClientSampleId :

Integration File signal 1: autoint1.e
 Integration File signal 2: autoint2.e
 Quant Time: Jun 08 18:05:44 2022
 Quant Method : Z:\pestpcbsrv\HPCHEM1\ECD_S\Method\PS052422.M
 Quant Title : 8080.M
 QLast Update : Wed May 25 02:05:34 2022
 Response via : Initial Calibration
 Integrator: ChemStation

Volume Inj. : 2 µl
 Signal #1 Phase : Rtx-CLPesticides Signal #2 Phase: Rtx-CLPesticides2
 Signal #1 Info : 30M x 0.32mm x0.5 Signal #2 Info : 30M x 0.32mm x 0.25µm

	Compound	RT#1	RT#2	Resp#1	Resp#2	ng/ml	ng/ml

System Monitoring Compounds							
4) S	2,4-DCAA	7.199	6.782	1010.7E6	397.0E6	421.269	512.327
Target Compounds							
1) T	Dalapon	2.969f	2.481f	231.9E6	104.7E6	45.755	104.338 #
2) T	3,5-DICHL...	6.397	5.987	1036588	73014955	<MDL	60.913 #
3) T	4-Nitroph...	7.033	6.427	7622255	1081953	7.767	2.528 #
5) T	DICAMBA	7.378	6.938	4697898	7989113	<MDL	2.337 #
6) T	MCP P	7.552	7.049	18094581	2732097	2.411	1.009 #
7) T	MCPA	7.698	7.240	12361309	16666241	1.144	4.337 #
8) T	DICHLORPROP	8.080	7.593	2399795	5496909	<MDL	6.223 #
9) T	2,4-D	8.269f	7.840	4440189	21990853	1.553	20.617 #
10) T	Pentachlo...	8.616	8.284	10998649	4272440	<MDL	<MDL #
11) T	2,4,5-TP ...	9.166	8.686	5166260	21228685	<MDL	4.223 #
12) T	2,4,5-T	9.467	9.029	31246424	5711392	1.660	1.214 #
13) T	2,4-DB	10.044	9.539	134.2E6	28930385	33.171	46.816 #
14) T	DINOSEB	11.127	9.856	1309.6E6	95676639	84.673	26.931 #
15) T	Picloram	10.967	10.851	98426701	70896307	3.317	11.022 #
16) T	DCPA	11.447	10.784	-31917866	14489762	N.D.	2.347

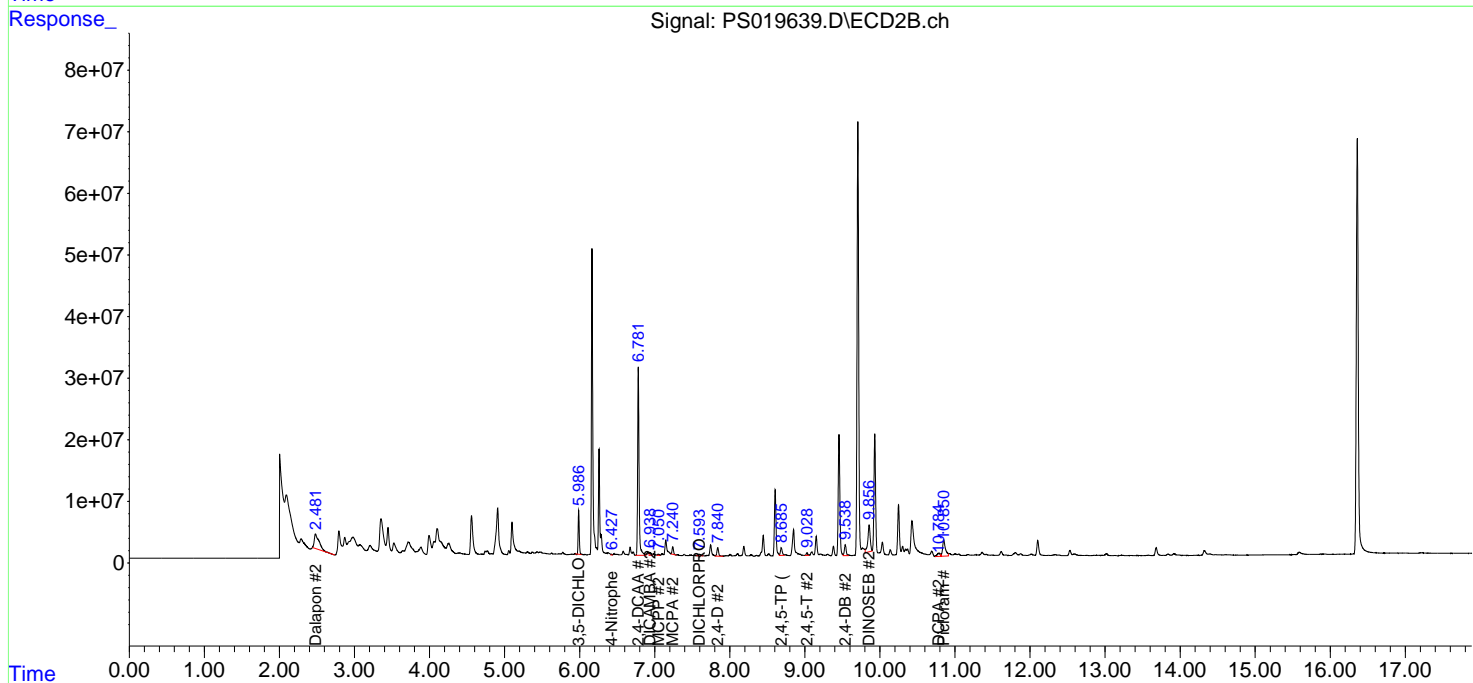
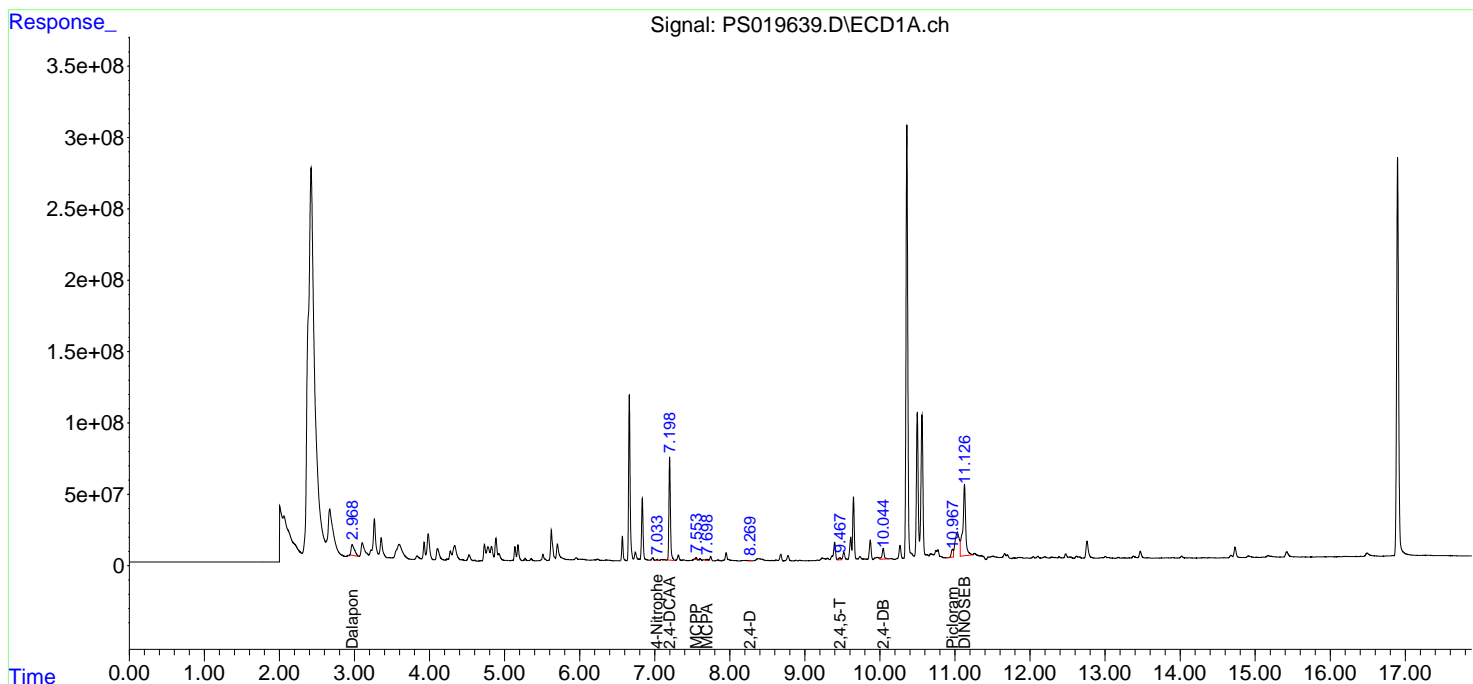
(f)=RT Delta > 1/2 Window (#)=Amounts differ by > 25% (m)=manual int.

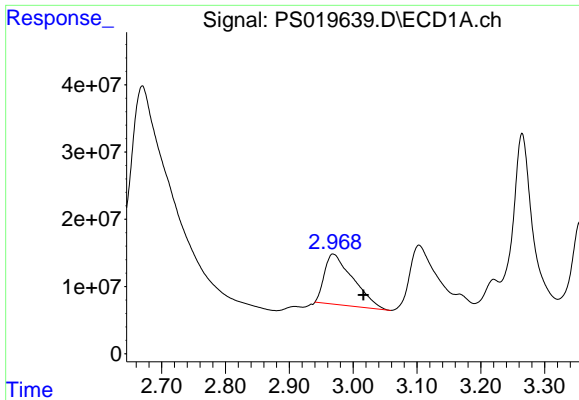
Data Path : Z:\pestpcbsrv\HPCHEM1\ECD_S\Data\PS060822\
 Data File : PS019639.D
 Signal(s) : Signal #1: ECD1A.ch Signal #2: ECD2B.ch
 Acq On : 08 Jun 2022 15:46
 Operator : AJ\MA
 Sample : PB145395BL
 Misc :
 ALS Vial : 14 Sample Multiplier: 1

Instrument :
 ECD_S
 ClientSampleId :

Integration File signal 1: autoint1.e
 Integration File signal 2: autoint2.e
 Quant Time: Jun 08 18:05:44 2022
 Quant Method : Z:\pestpcbsrv\HPCHEM1\ECD_S\Method\PS052422.M
 Quant Title : 8080.M
 QLast Update : Wed May 25 02:05:34 2022
 Response via : Initial Calibration
 Integrator: ChemStation

Volume Inj. : 2 µl
 Signal #1 Phase : Rtx-CLPesticides Signal #2 Phase: Rtx-CLPesticides2
 Signal #1 Info : 30M x 0.32mm x 0.5 Signal #2 Info : 30M x 0.32mm x 0.25µm

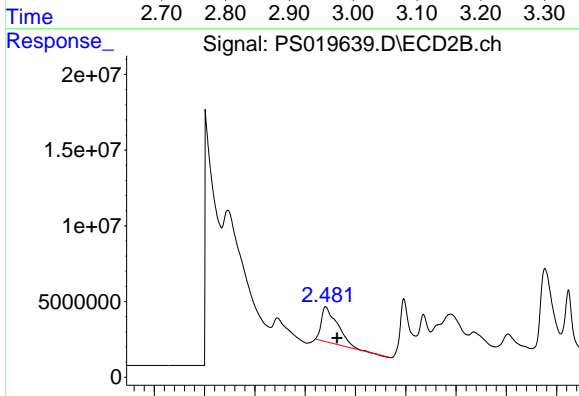




#1 Dalapon

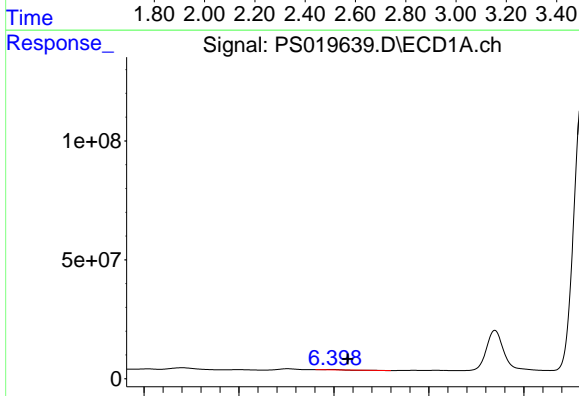
R.T.: 2.969 min
 Delta R.T.: -0.047 min
 Response: 231919764
 Conc: 45.75 ng/ml

Instrument :
 ECD_S
 ClientSampleId :



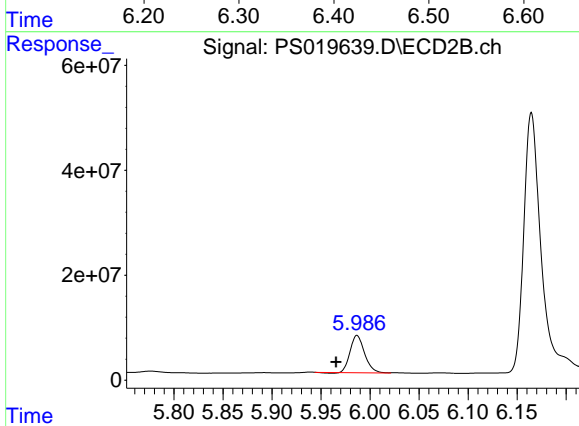
#1 Dalapon

R.T.: 2.481 min
 Delta R.T.: -0.047 min
 Response: 104696740
 Conc: 104.34 ng/ml



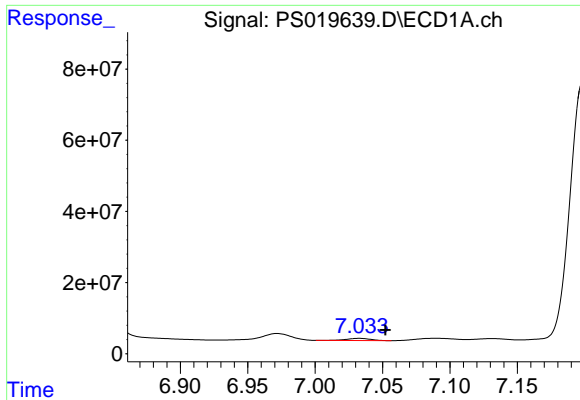
#2 3,5-DICHLOROBENZOIC ACID

R.T.: 6.397 min
 Delta R.T.: -0.017 min
 Response: 1036588
 Conc: N.D.



#2 3,5-DICHLOROBENZOIC ACID

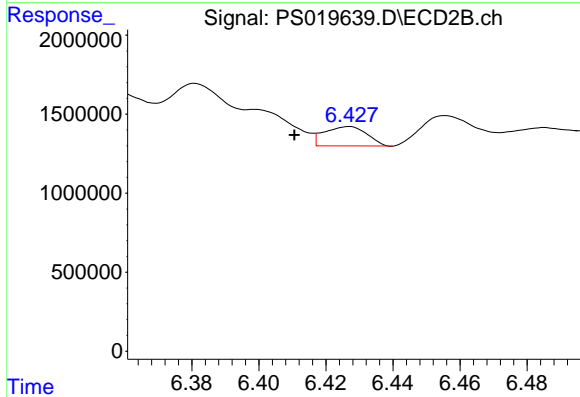
R.T.: 5.987 min
 Delta R.T.: 0.021 min
 Response: 73014955
 Conc: 60.91 ng/ml



#3 4-Nitrophenol

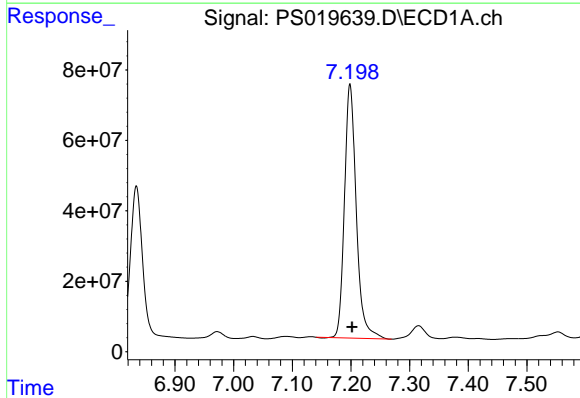
R.T.: 7.033 min
 Delta R.T.: -0.019 min
 Response: 7622255
 Conc: 7.77 ng/ml

Instrument :
 ECD_S
 ClientSampleId :



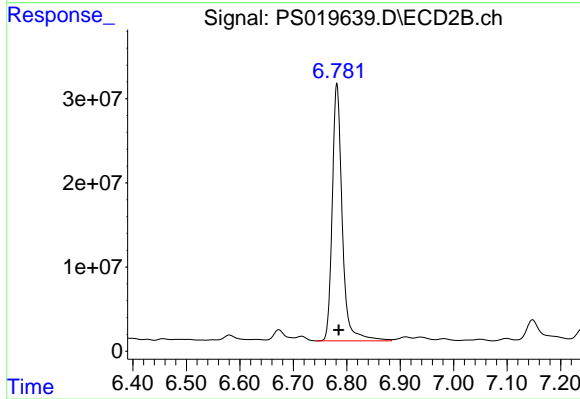
#3 4-Nitrophenol

R.T.: 6.427 min
 Delta R.T.: 0.016 min
 Response: 1081953
 Conc: 2.53 ng/ml



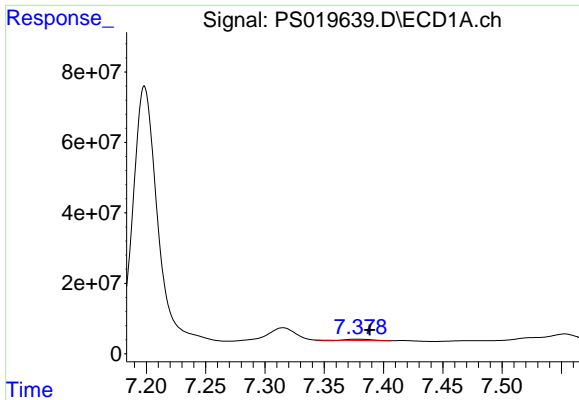
#4 2,4-DCAA

R.T.: 7.199 min
 Delta R.T.: -0.003 min
 Response: 1010693978
 Conc: 421.27 ng/ml



#4 2,4-DCAA

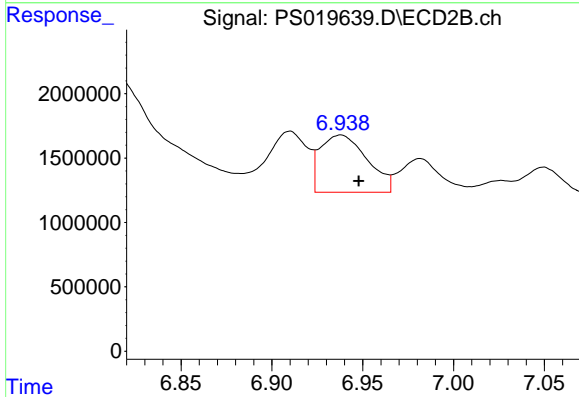
R.T.: 6.782 min
 Delta R.T.: -0.003 min
 Response: 396987343
 Conc: 512.33 ng/ml



#5 DICAMBA

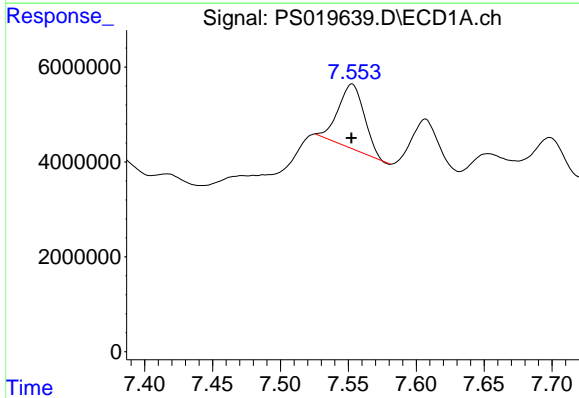
R.T.: 7.378 min
 Delta R.T.: -0.011 min
 Response: 4697898
 Conc: N.D.

Instrument :
 ECD_S
 ClientSampleId :



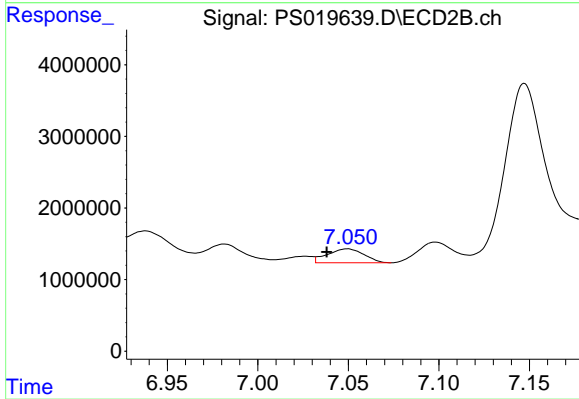
#5 DICAMBA

R.T.: 6.938 min
 Delta R.T.: -0.010 min
 Response: 7989113
 Conc: 2.34 ng/ml



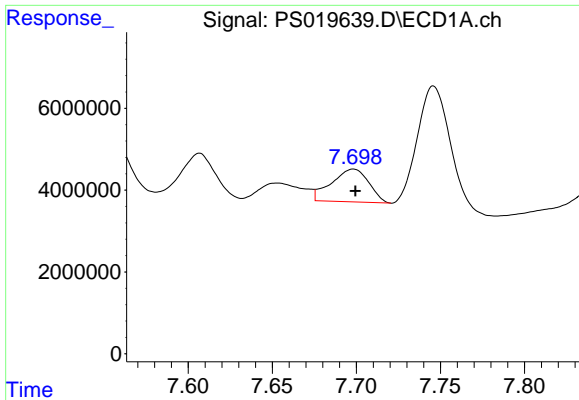
#6 MCP

R.T.: 7.552 min
 Delta R.T.: 0.000 min
 Response: 18094581
 Conc: 2.41 ug/ml



#6 MCP

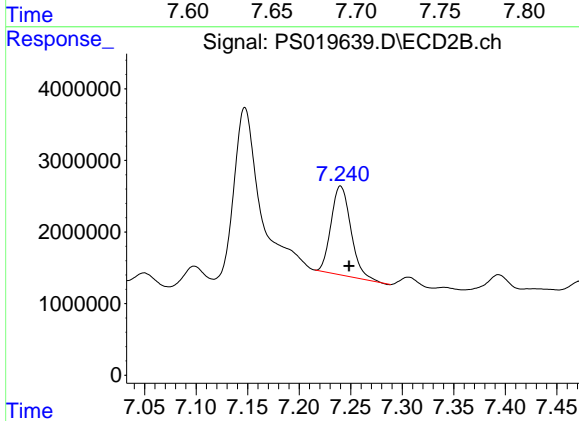
R.T.: 7.049 min
 Delta R.T.: 0.011 min
 Response: 2732097
 Conc: 1.01 ug/ml



#7 MCPA

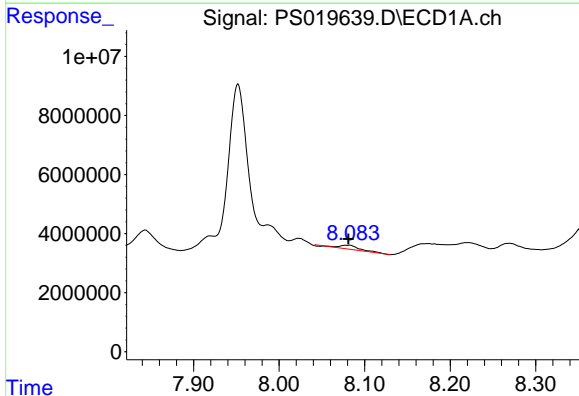
R.T.: 7.698 min
 Delta R.T.: -0.001 min
 Response: 12361309
 Conc: 1.14 ug/ml

Instrument :
 ECD_S
 ClientSampleId :



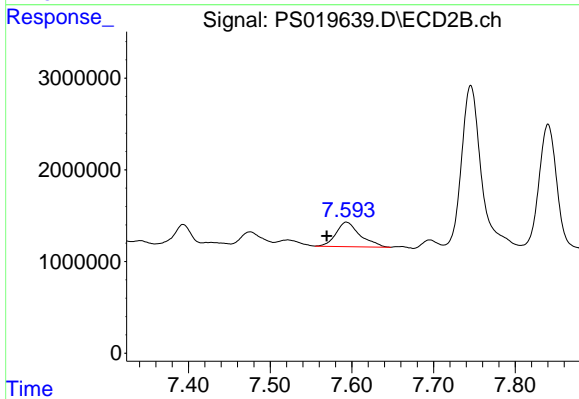
#7 MCPA

R.T.: 7.240 min
 Delta R.T.: -0.008 min
 Response: 16666241
 Conc: 4.34 ug/ml



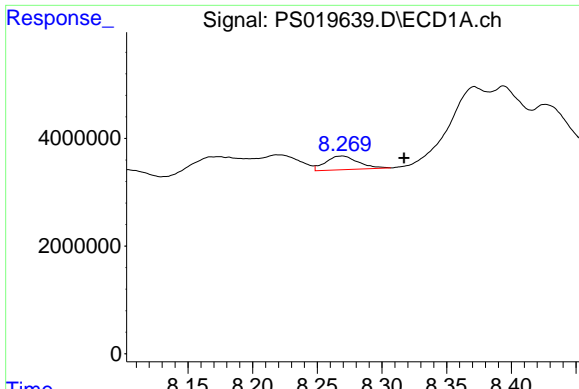
#8 DICHLORPROP

R.T.: 8.080 min
 Delta R.T.: -0.001 min
 Response: 2399795
 Conc: N.D.



#8 DICHLORPROP

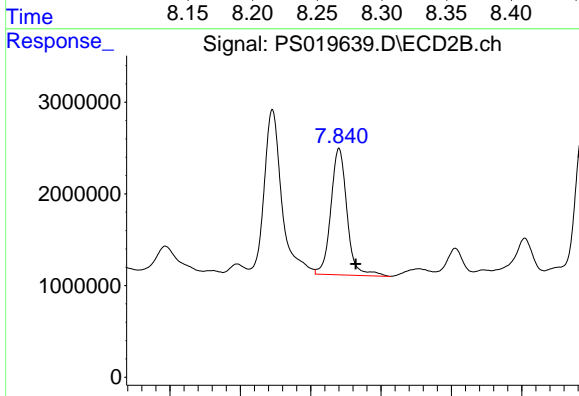
R.T.: 7.593 min
 Delta R.T.: 0.024 min
 Response: 5496909
 Conc: 6.22 ng/ml



#9 2,4-D

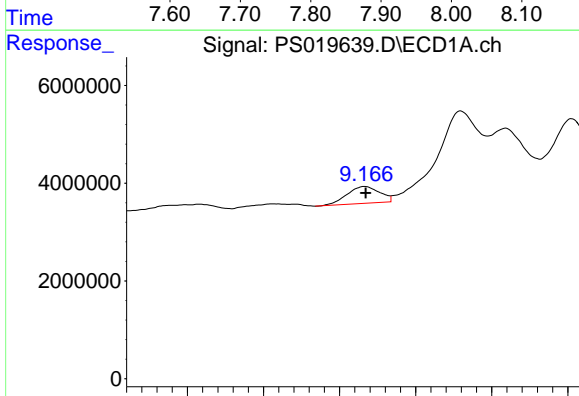
R.T.: 8.269 min
 Delta R.T.: -0.048 min
 Response: 4440189
 Conc: 1.55 ng/ml

Instrument :
 ECD_S
 ClientSampleId :



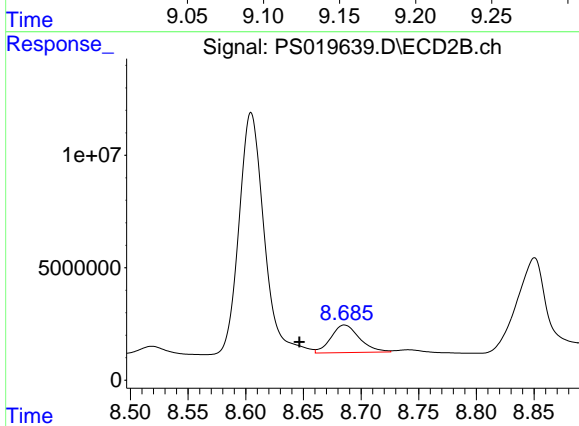
#9 2,4-D

R.T.: 7.840 min
 Delta R.T.: -0.024 min
 Response: 21990853
 Conc: 20.62 ng/ml



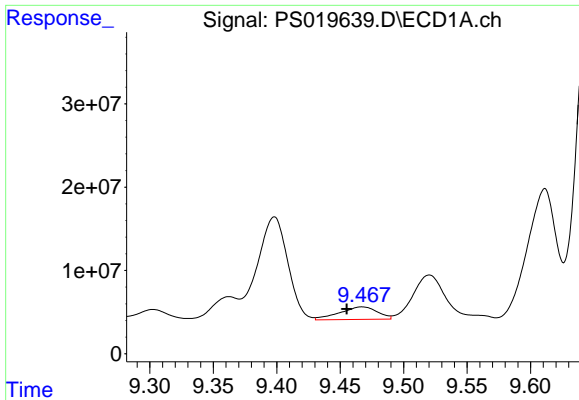
#11 2,4,5-TP (SILVEX)

R.T.: 9.166 min
 Delta R.T.: 0.000 min
 Response: 5166260
 Conc: N.D.



#11 2,4,5-TP (SILVEX)

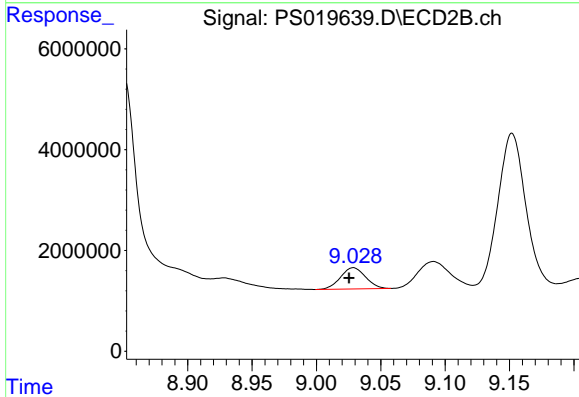
R.T.: 8.686 min
 Delta R.T.: 0.039 min
 Response: 21228685
 Conc: 4.22 ng/ml



#12 2,4,5-T

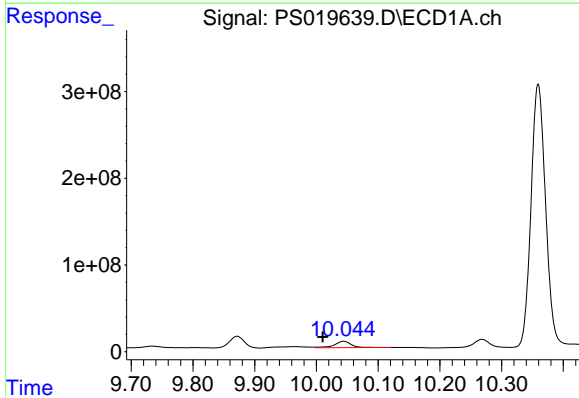
R.T.: 9.467 min
 Delta R.T.: 0.012 min
 Response: 31246424
 Conc: 1.66 ng/ml

Instrument :
 ECD_S
 ClientSampleId :



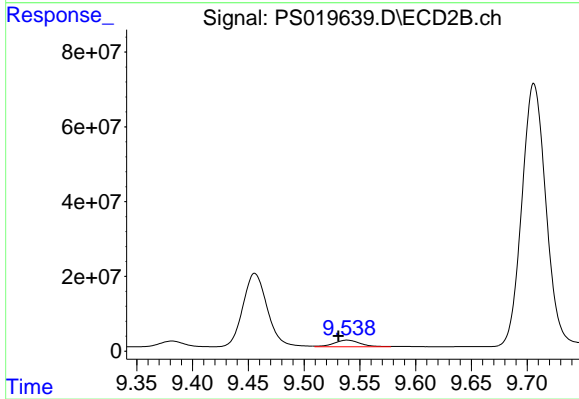
#12 2,4,5-T

R.T.: 9.029 min
 Delta R.T.: 0.003 min
 Response: 5711392
 Conc: 1.21 ng/ml



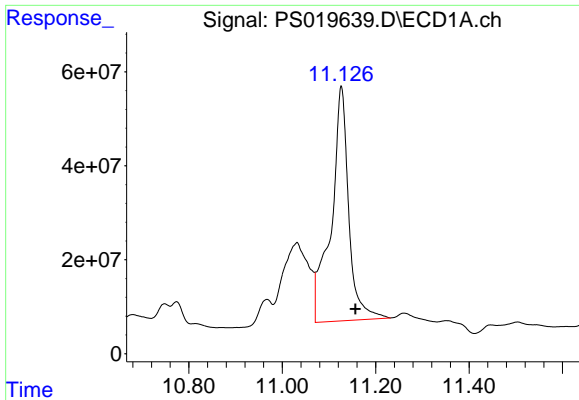
#13 2,4-DB

R.T.: 10.044 min
 Delta R.T.: 0.034 min
 Response: 134208985
 Conc: 33.17 ng/ml



#13 2,4-DB

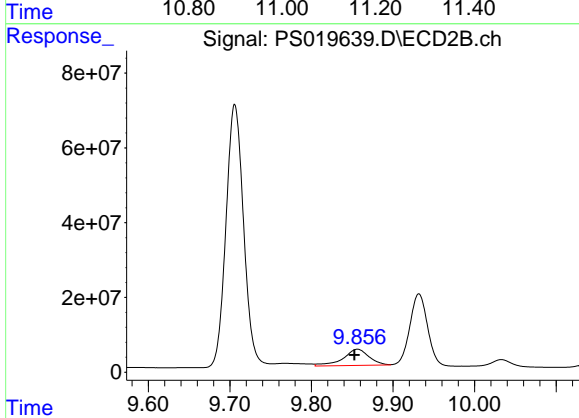
R.T.: 9.539 min
 Delta R.T.: 0.008 min
 Response: 28930385
 Conc: 46.82 ng/ml



#14 DINOSEB

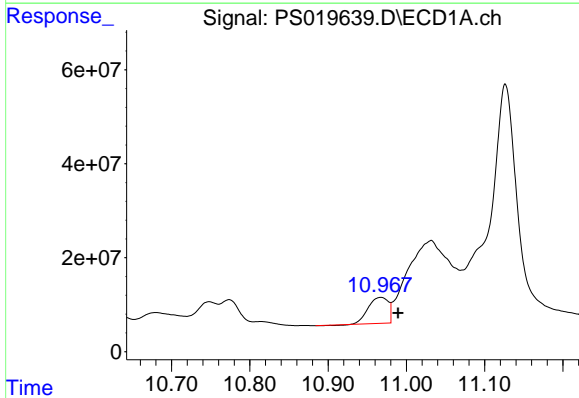
R.T.: 11.127 min
 Delta R.T.: -0.030 min
 Response: 1309648734
 Conc: 84.67 ng/ml

Instrument :
 ECD_S
 ClientSampleId :



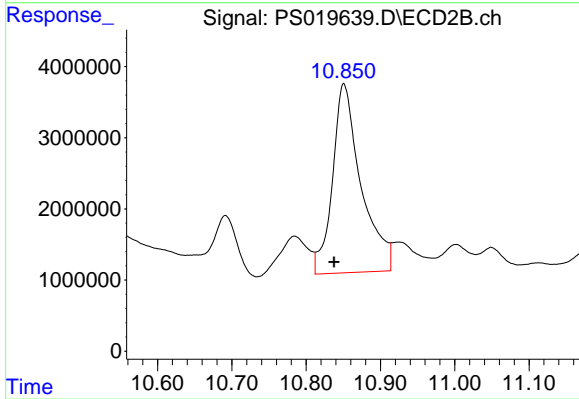
#14 DINOSEB

R.T.: 9.856 min
 Delta R.T.: 0.004 min
 Response: 95676639
 Conc: 26.93 ng/ml



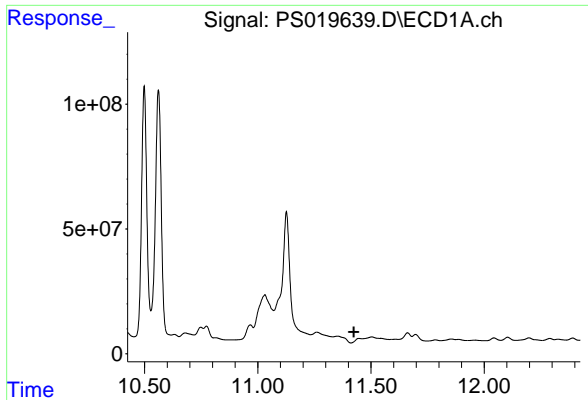
#15 Picloram

R.T.: 10.967 min
 Delta R.T.: -0.022 min
 Response: 98426701
 Conc: 3.32 ng/ml



#15 Picloram

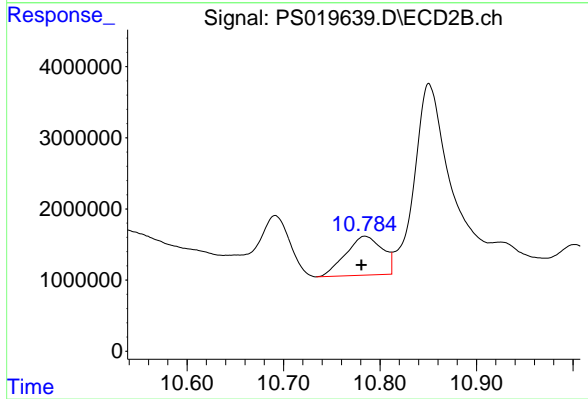
R.T.: 10.851 min
 Delta R.T.: 0.013 min
 Response: 70896307
 Conc: 11.02 ng/ml



#16 DCPA

R.T.: 11.447 min
 Delta R.T.: 0.022 min
 Response: -31917866
 Conc: N.D.

Instrument :
 ECD_S
 ClientSampleId :



#16 DCPA

R.T.: 10.784 min
 Delta R.T.: 0.003 min
 Response: 14489762
 Conc: 2.35 ng/ml