

Data Path : Z:\pestpcbsrv\HPCHEM1\ECD_S\Data\PS060822\
 Data File : PS019646.D
 Signal(s) : Signal #1: ECD1A.ch Signal #2: ECD2B.ch
 Acq On : 08 Jun 2022 18:34
 Operator : AJ\MA
 Sample : N3189-08
 Misc :
 ALS Vial : 21 Sample Multiplier: 1

Instrument :
 ECD_S
 ClientSampleId :

Integration File signal 1: autoint1.e
 Integration File signal 2: autoint2.e
 Quant Time: Jun 09 01:35:50 2022
 Quant Method : Z:\pestpcbsrv\HPCHEM1\ECD_S\Method\PS052422.M
 Quant Title : 8080.M
 QLast Update : Wed May 25 02:05:34 2022
 Response via : Initial Calibration
 Integrator: ChemStation

Volume Inj. : 2 µl
 Signal #1 Phase : Rtx-CLPesticides Signal #2 Phase: Rtx-CLPesticides2
 Signal #1 Info : 30M x 0.32mm x0.5 Signal #2 Info : 30M x 0.32mm x 0.25µm

Compound	RT#1	RT#2	Resp#1	Resp#2	ng/ml	ng/ml

System Monitoring Compounds						
4) S 2,4-DCAA	7.195	6.779	2168.0E6	912.1E6	903.652	1177.104 #
Target Compounds						
1) T Dalapon	2.967f	2.486f	207.4E6	167.2E6	40.926	166.589 #
2) T 3,5-DICHL...	6.441	5.985	-1626329	103.7E6	N.D.	86.487
3) T 4-Nitroph...	7.045	6.446	125.9E6	34146296	128.271	79.774 #
5) T DICAMBA	7.419	6.946	-26601395	45298434	N.D.	13.251
7) T MCPA	7.695	7.230	24065499	6949375	2.227	1.809
8) T DICHLORPROP	8.085	7.586	670223	13351111	<MDL	15.114 #
9) T 2,4-D	8.330	7.884	2097332	1313071	<MDL	1.231 #
10) T Pentachlo...	8.631	8.298	20512060	3033374	<MDL	<MDL #
11) T 2,4,5-TP ...	9.135	8.678	501.4E6	2943177	31.932	<MDL #
12) T 2,4,5-T	9.448	9.029	6386130	12944239	<MDL	2.752 #
13) T 2,4-DB	10.040	9.537	636.8E6	199.7E6	157.387	323.196 #
14) T DINOSEB	11.121	9.855	3015.5E6	272.3E6	194.959	76.649 #
15) T Picloram	10.950	10.852	46512188	104.4E6	1.567	16.228 #
16) T DCPA	11.426	10.782	3934663	54330184	<MDL	8.802 #

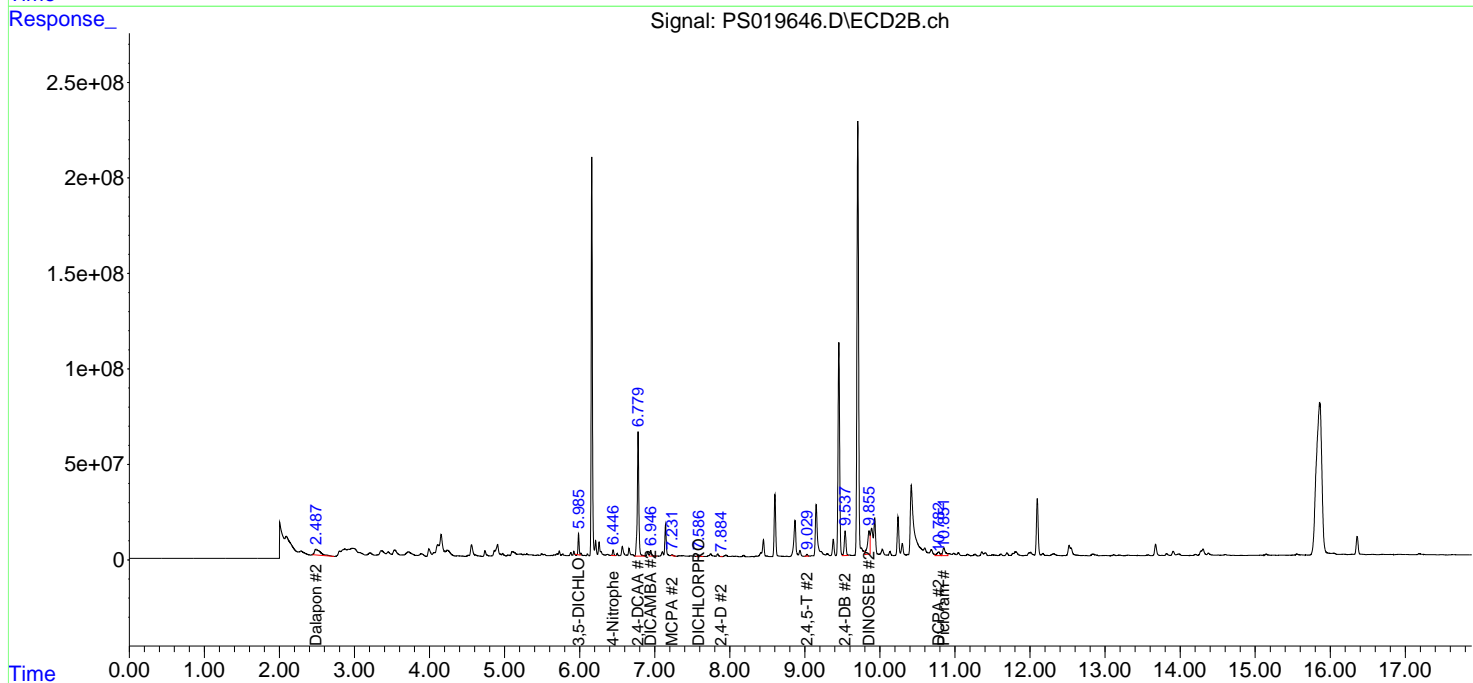
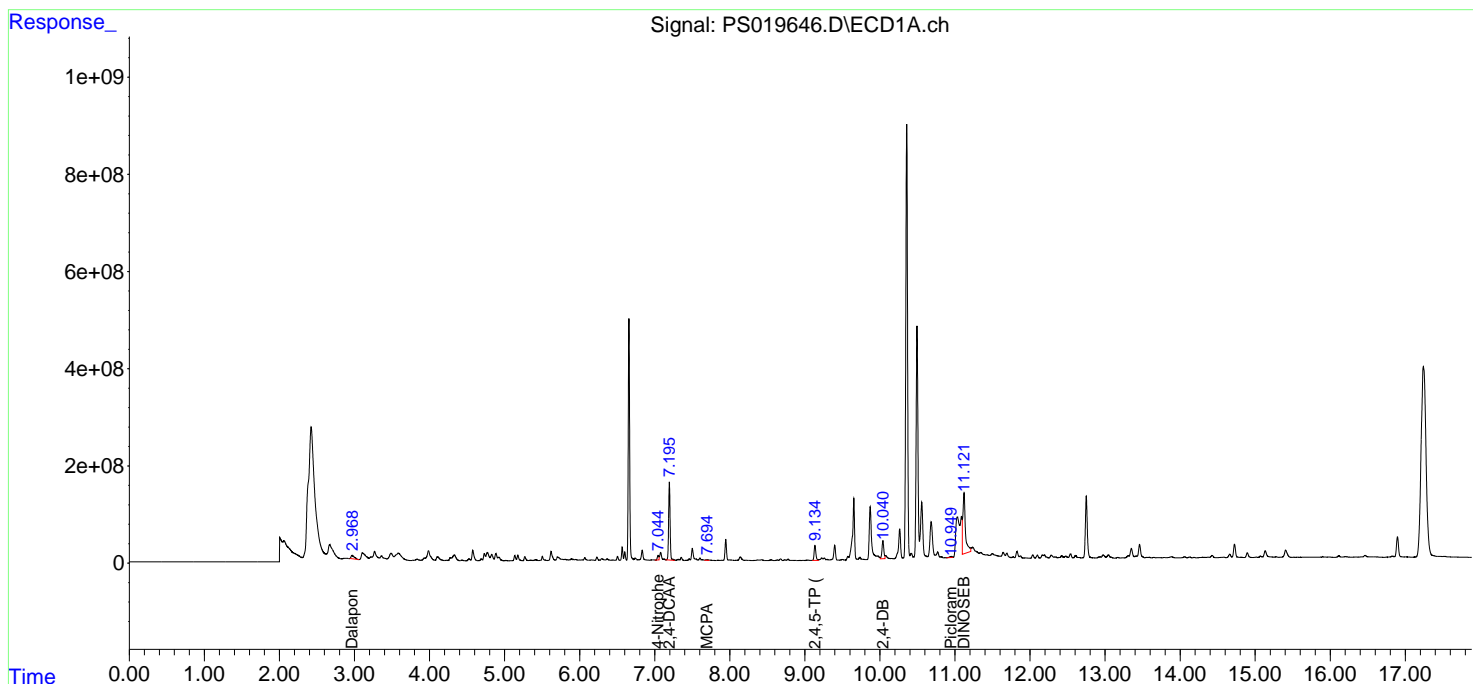
(f)=RT Delta > 1/2 Window (#)=Amounts differ by > 25% (m)=manual int.

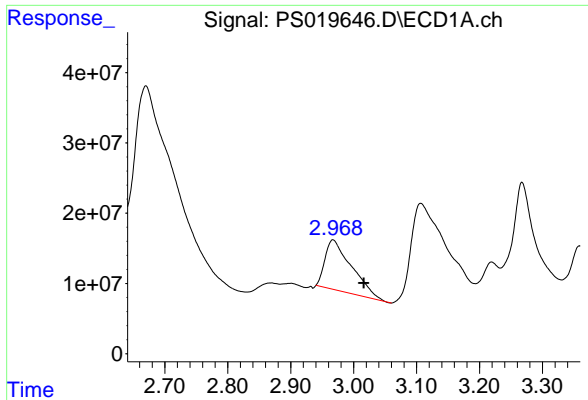
Data Path : Z:\pestpcbsrv\HPCHEM1\ECD_S\Data\PS060822\
 Data File : PS019646.D
 Signal(s) : Signal #1: ECD1A.ch Signal #2: ECD2B.ch
 Acq On : 08 Jun 2022 18:34
 Operator : AJ\MA
 Sample : N3189-08
 Misc :
 ALS Vial : 21 Sample Multiplier: 1

Instrument :
 ECD_S
 ClientSampleId :

Integration File signal 1: autoint1.e
 Integration File signal 2: autoint2.e
 Quant Time: Jun 09 01:35:50 2022
 Quant Method : Z:\pestpcbsrv\HPCHEM1\ECD_S\Method\PS052422.M
 Quant Title : 8080.M
 QLast Update : Wed May 25 02:05:34 2022
 Response via : Initial Calibration
 Integrator: ChemStation

Volume Inj. : 2 µl
 Signal #1 Phase : Rtx-CLPesticides Signal #2 Phase: Rtx-CLPesticides2
 Signal #1 Info : 30M x 0.32mm x0.5 Signal #2 Info : 30M x 0.32mm x 0.25µm

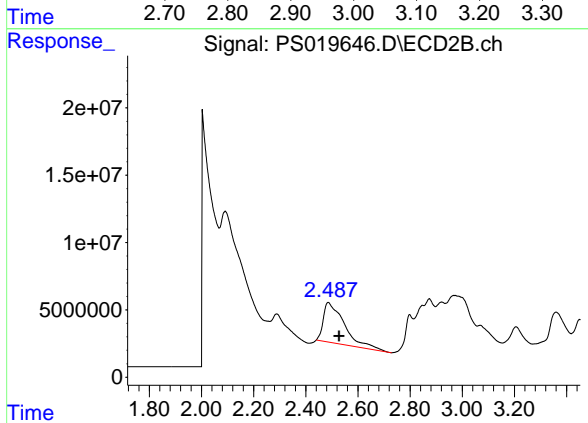




#1 Dalapon

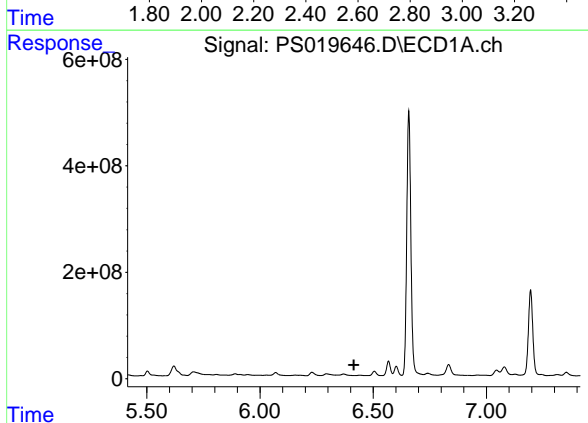
R.T.: 2.967 min
 Delta R.T.: -0.049 min
 Response: 207446407
 Conc: 40.93 ng/ml

Instrument :
 ECD_S
 ClientSampleId :



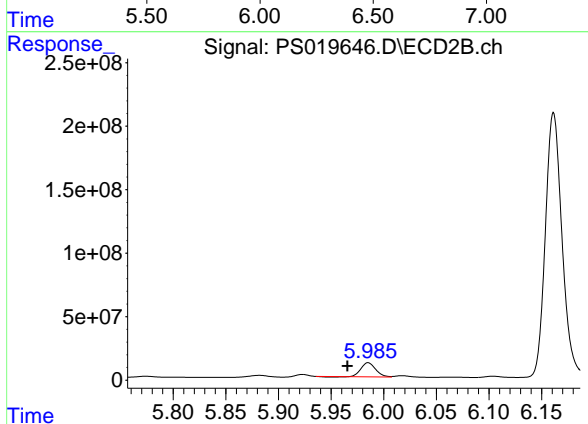
#1 Dalapon

R.T.: 2.486 min
 Delta R.T.: -0.041 min
 Response: 167161909
 Conc: 166.59 ng/ml



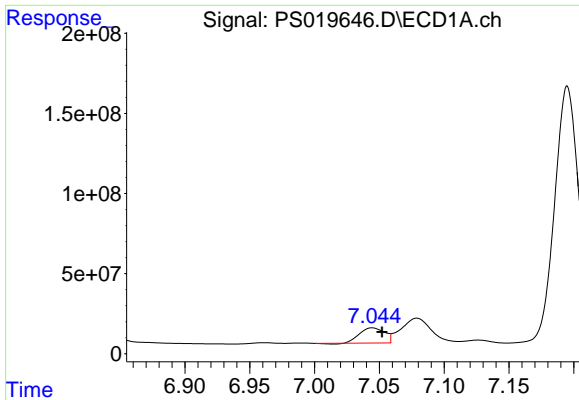
#2 3,5-DICHLOROBENZOIC ACID

R.T.: 6.441 min
 Delta R.T.: 0.026 min
 Response: -1626329
 Conc: N.D.



#2 3,5-DICHLOROBENZOIC ACID

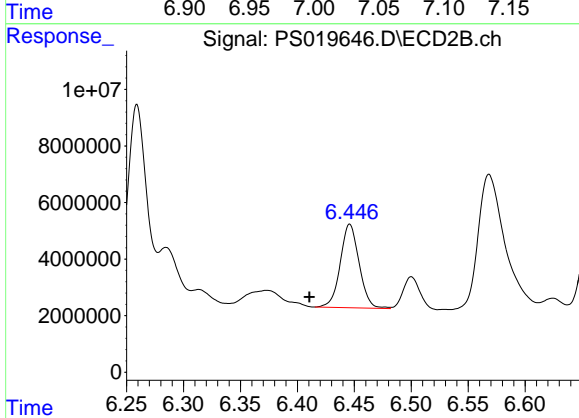
R.T.: 5.985 min
 Delta R.T.: 0.020 min
 Response: 103669275
 Conc: 86.49 ng/ml



#3 4-Nitrophenol

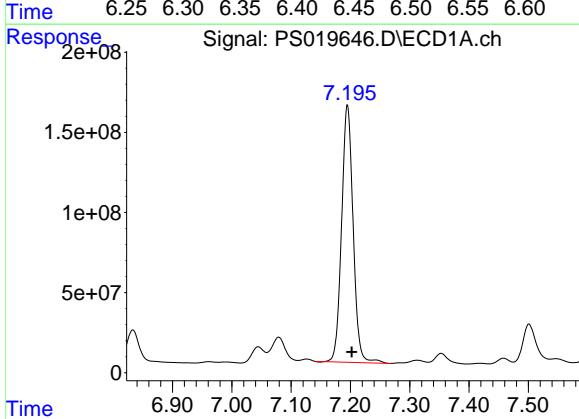
R.T.: 7.045 min
 Delta R.T.: -0.007 min
 Response: 125874186
 Conc: 128.27 ng/ml

Instrument :
 ECD_S
 ClientSampleId :



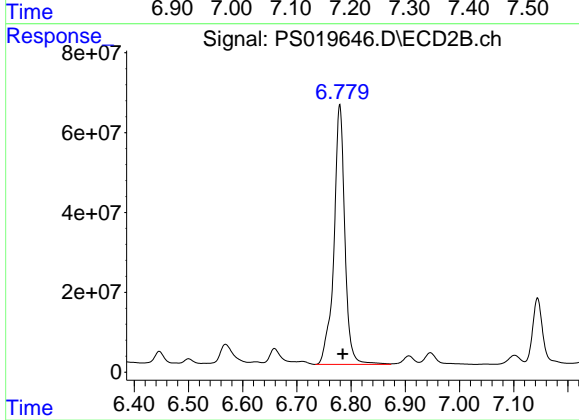
#3 4-Nitrophenol

R.T.: 6.446 min
 Delta R.T.: 0.035 min
 Response: 34146296
 Conc: 79.77 ng/ml



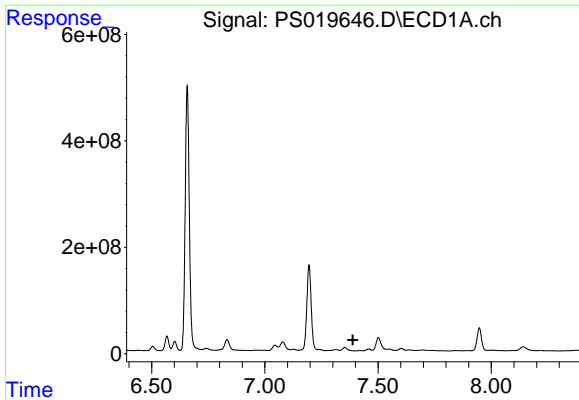
#4 2,4-DCAA

R.T.: 7.195 min
 Delta R.T.: -0.007 min
 Response: 2168011264
 Conc: 903.65 ng/ml



#4 2,4-DCAA

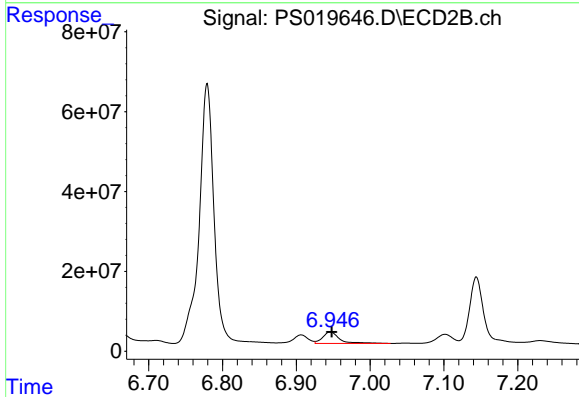
R.T.: 6.779 min
 Delta R.T.: -0.006 min
 Response: 912102961
 Conc: 1177.10 ng/ml



#5 DICAMBA

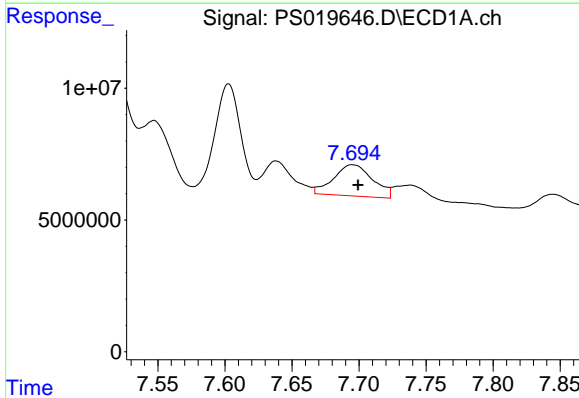
R.T.: 7.419 min
 Delta R.T.: 0.030 min
 Response: -26601395
 Conc: N.D.

Instrument :
 ECD_S
 ClientSampleId :



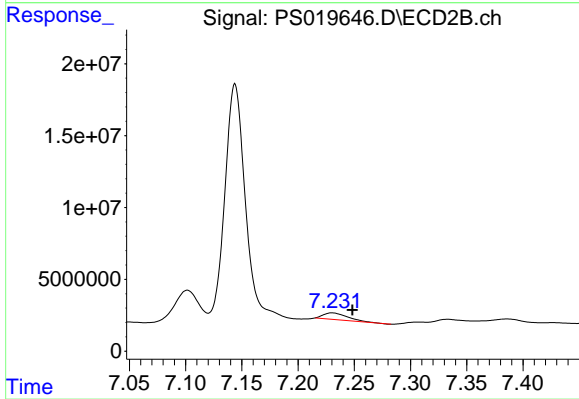
#5 DICAMBA

R.T.: 6.946 min
 Delta R.T.: -0.002 min
 Response: 45298434
 Conc: 13.25 ng/ml



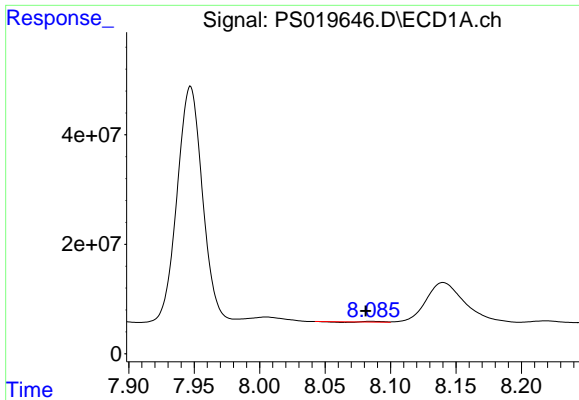
#7 MCPA

R.T.: 7.695 min
 Delta R.T.: -0.004 min
 Response: 24065499
 Conc: 2.23 ug/ml



#7 MCPA

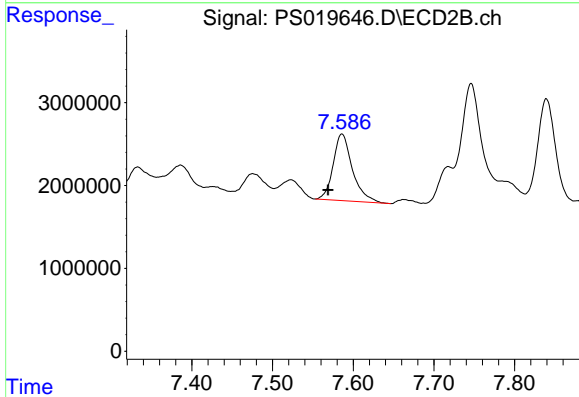
R.T.: 7.230 min
 Delta R.T.: -0.018 min
 Response: 6949375
 Conc: 1.81 ug/ml



#8 DICHLORPROP

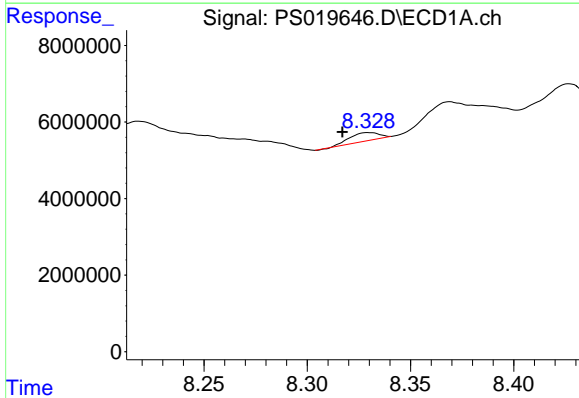
R.T.: 8.085 min
 Delta R.T.: 0.004 min
 Response: 670223
 Conc: N.D.

Instrument :
 ECD_S
 ClientSampleId :



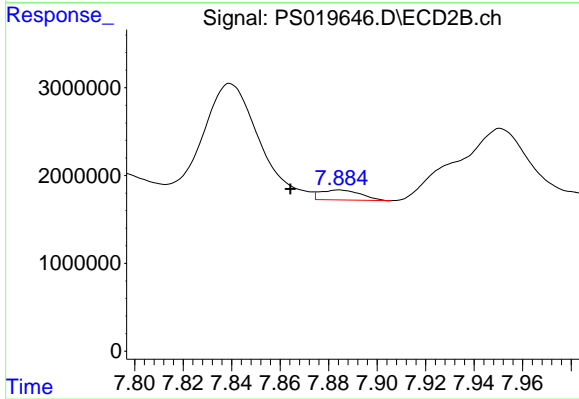
#8 DICHLORPROP

R.T.: 7.586 min
 Delta R.T.: 0.017 min
 Response: 13351111
 Conc: 15.11 ng/ml



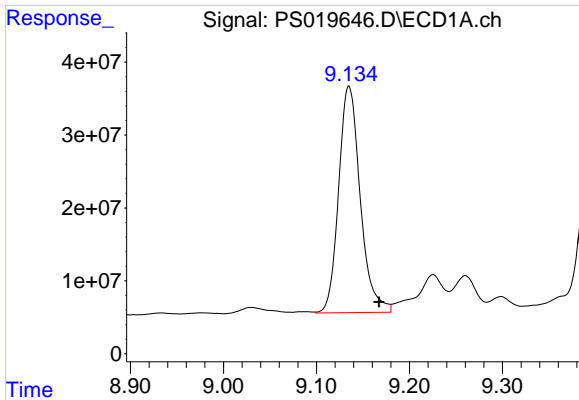
#9 2,4-D

R.T.: 8.330 min
 Delta R.T.: 0.013 min
 Response: 2097332
 Conc: N.D.



#9 2,4-D

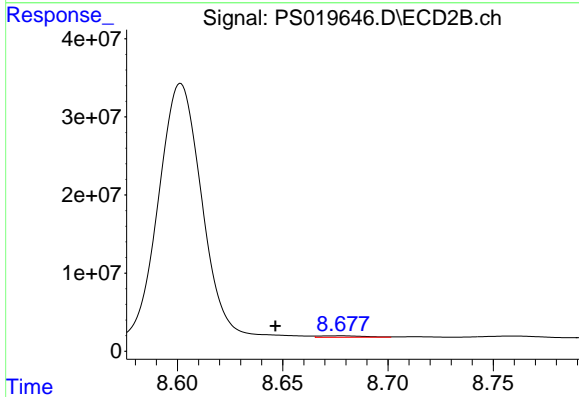
R.T.: 7.884 min
 Delta R.T.: 0.020 min
 Response: 1313071
 Conc: 1.23 ng/ml



#11 2,4,5-TP (SILVEX)

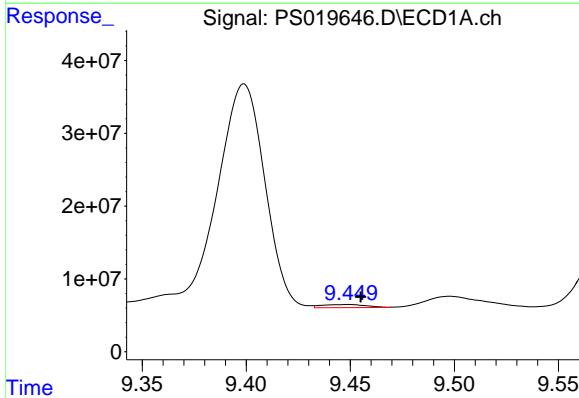
R.T.: 9.135 min
 Delta R.T.: -0.032 min
 Response: 501365305
 Conc: 31.93 ng/ml

Instrument :
 ECD_S
 ClientSampleId :



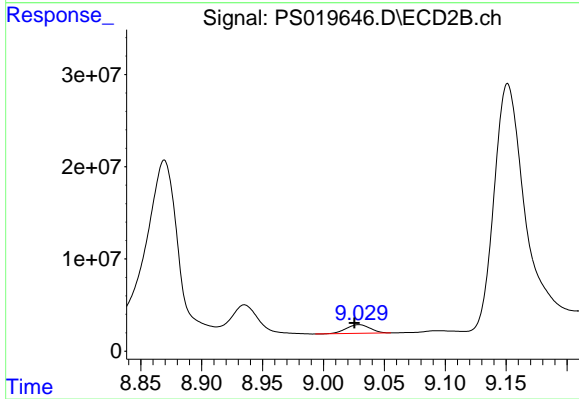
#11 2,4,5-TP (SILVEX)

R.T.: 8.678 min
 Delta R.T.: 0.031 min
 Response: 2943177
 Conc: N.D.



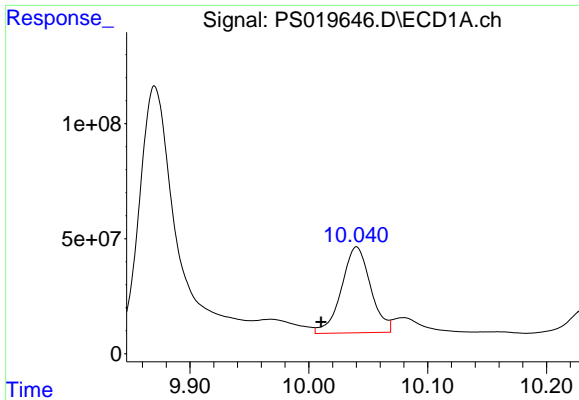
#12 2,4,5-T

R.T.: 9.448 min
 Delta R.T.: -0.007 min
 Response: 6386130
 Conc: N.D.



#12 2,4,5-T

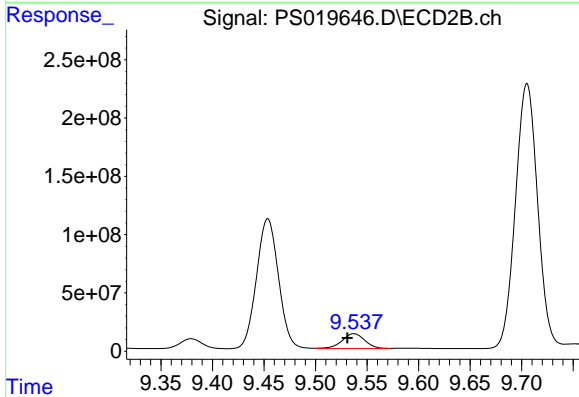
R.T.: 9.029 min
 Delta R.T.: 0.004 min
 Response: 12944239
 Conc: 2.75 ng/ml



#13 2,4-DB

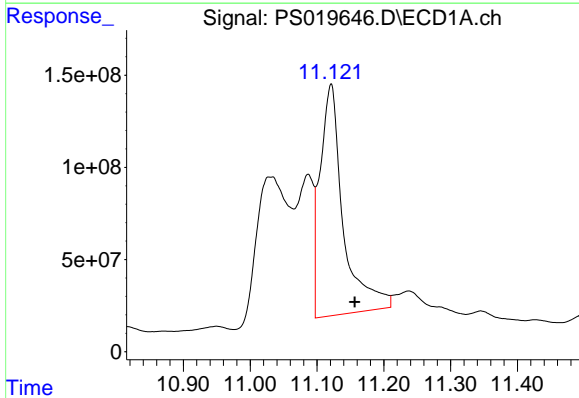
R.T.: 10.040 min
 Delta R.T.: 0.030 min
 Response: 636789196
 Conc: 157.39 ng/ml

Instrument :
 ECD_S
 ClientSampleId :



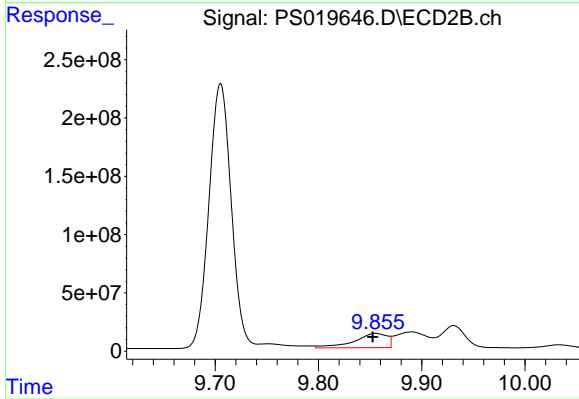
#13 2,4-DB

R.T.: 9.537 min
 Delta R.T.: 0.007 min
 Response: 199723540
 Conc: 323.20 ng/ml



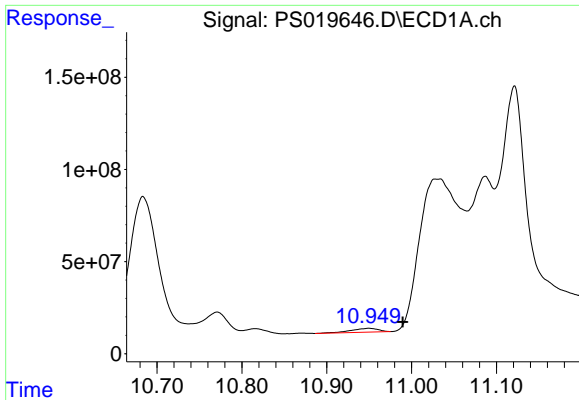
#14 DINOSEB

R.T.: 11.121 min
 Delta R.T.: -0.036 min
 Response: 3015465012
 Conc: 194.96 ng/ml



#14 DINOSEB

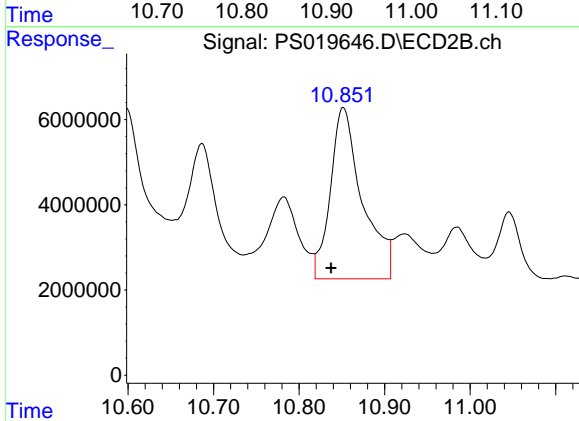
R.T.: 9.855 min
 Delta R.T.: 0.003 min
 Response: 272303602
 Conc: 76.65 ng/ml



#15 Picloram

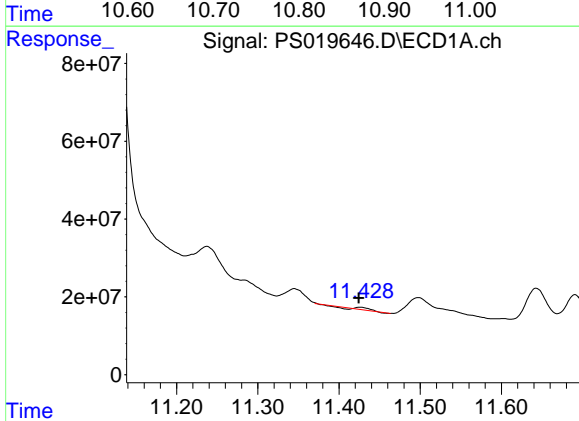
R.T.: 10.950 min
 Delta R.T.: -0.040 min
 Response: 46512188
 Conc: 1.57 ng/ml

Instrument :
 ECD_S
 ClientSampleId :



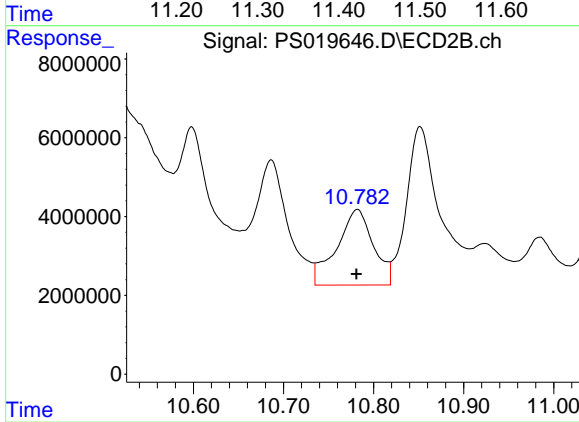
#15 Picloram

R.T.: 10.852 min
 Delta R.T.: 0.014 min
 Response: 104380217
 Conc: 16.23 ng/ml



#16 DCPA

R.T.: 11.426 min
 Delta R.T.: 0.002 min
 Response: 3934663
 Conc: N.D.



#16 DCPA

R.T.: 10.782 min
 Delta R.T.: 0.001 min
 Response: 54330184
 Conc: 8.80 ng/ml