

Data Path : Z:\pestpcbsrv\HPCHEM1\ECD\_S\Data\PS060822\  
 Data File : PS019656.D  
 Signal(s) : Signal #1: ECD1A.ch Signal #2: ECD2B.ch  
 Acq On : 09 Jun 2022 00:10  
 Operator : AJ\MA  
 Sample : N3215-01  
 Misc :  
 ALS Vial : 29 Sample Multiplier: 1

Instrument :  
 ECD\_S  
 ClientSampleId :

Integration File signal 1: autoint1.e  
 Integration File signal 2: autoint2.e  
 Quant Time: Jun 09 01:38:56 2022  
 Quant Method : Z:\pestpcbsrv\HPCHEM1\ECD\_S\Method\PS052422.M  
 Quant Title : 8080.M  
 QLast Update : Wed May 25 02:05:34 2022  
 Response via : Initial Calibration  
 Integrator: ChemStation

Volume Inj. : 2 µl  
 Signal #1 Phase : Rtx-CLPesticides Signal #2 Phase: Rtx-CLPesticides2  
 Signal #1 Info : 30M x 0.32mm x0.5 Signal #2 Info : 30M x 0.32mm x 0.25µm

	Compound	RT#1	RT#2	Resp#1	Resp#2	ng/ml	ng/ml
-----							
System Monitoring Compounds							
4) S	2,4-DCAA	7.196	6.779	1481.0E6	659.1E6	617.296	850.607 #
Target Compounds							
1) T	Dalapon	2.967f	2.517	193.6E6	56300828	38.186	56.108 #
2) T	3,5-DICHL...	6.430	5.985	-2424234	67430346	N.D.	56.254
3) T	4-Nitroph...	7.051	6.426	84521713	34999564	86.131	81.768
5) T	DICAMBA	7.380	6.946	21894003	10842888	2.305	3.172 #
6) T	MCP P	7.505f	7.046	122.3E6	1661189	16.294	<MDL #
7) T	MCPA	7.684	7.238	24659362	17587749	2.282	4.577 #
8) T	DICHLORPROP	8.024f	7.588	4552270	31601147	1.778	35.773 #
9) T	2,4-D	8.366f	7.889	17285276	638512	6.045	<MDL #
10) T	Pentachlo...	8.614	8.283	20168317	7723236	<MDL	<MDL #
11) T	2,4,5-TP ...	9.119f	8.681	10645095	13398269	<MDL	2.665 #
12) T	2,4,5-T	9.467	9.027	15592281	31208467	<MDL	6.636 #
13) T	2,4-DB	10.040	9.537	505.7E6	208.7E6	124.975	337.674 #
14) T	DINOSEB	11.121	9.855	1714.1E6	213.9E6	110.824	60.208 #
15) T	Picloram	11.022	10.857	2053.5E6	68433604	69.196	10.639 #
16) T	DCPA	0.000	10.783	0	31231938	N.D.	5.060

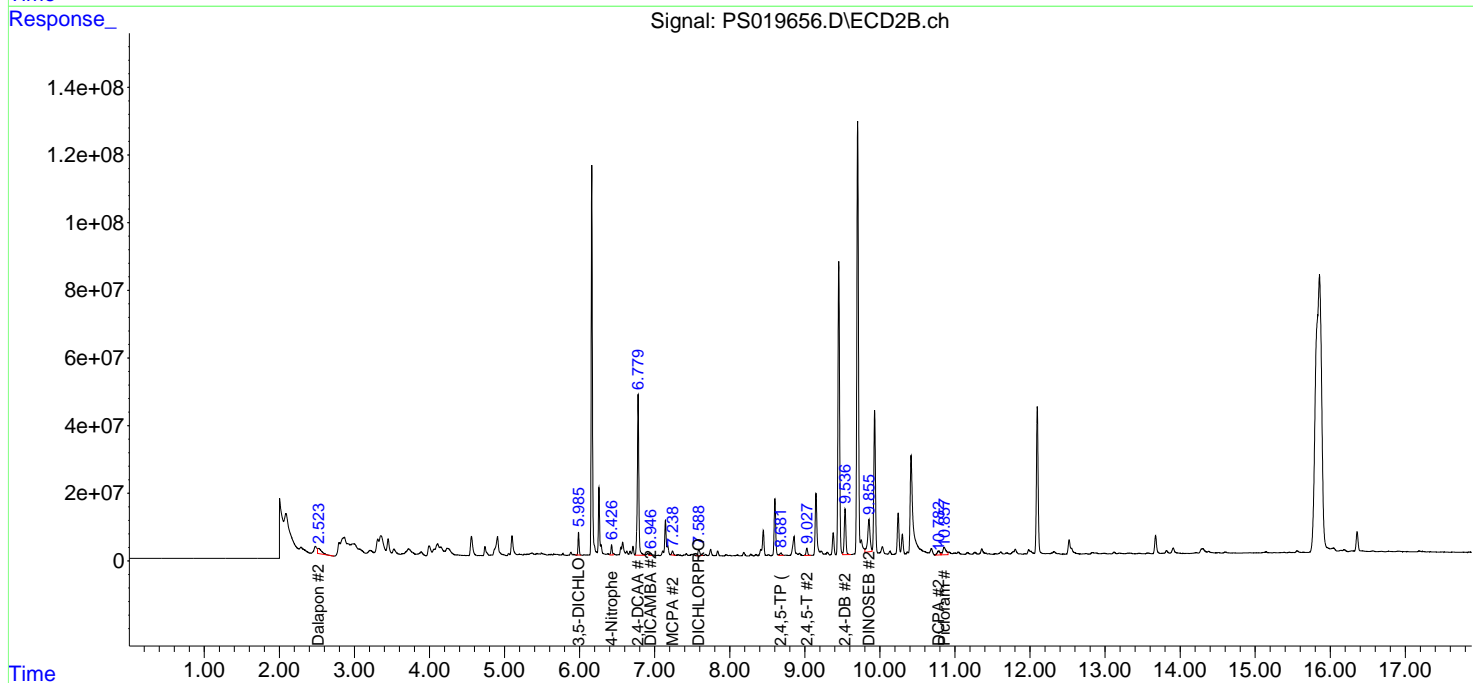
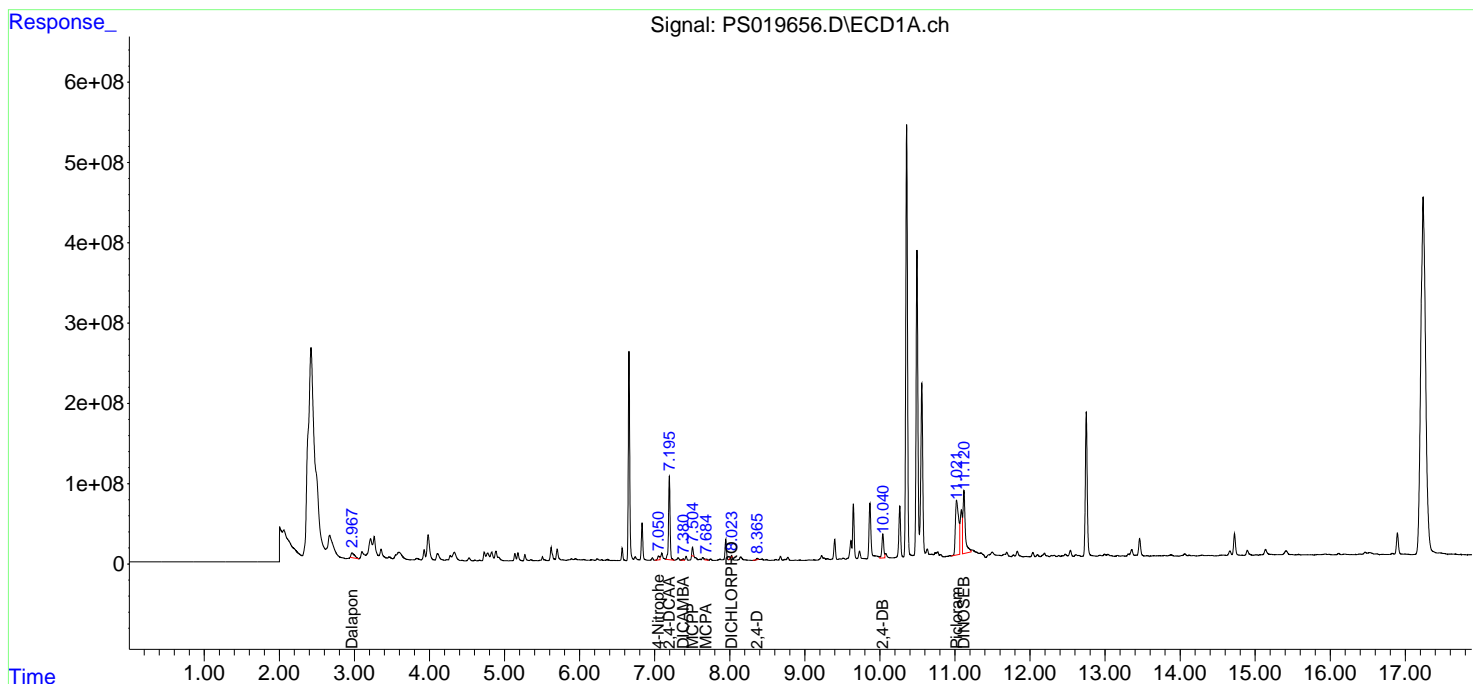
(f)=RT Delta > 1/2 Window (#)=Amounts differ by > 25% (m)=manual int.

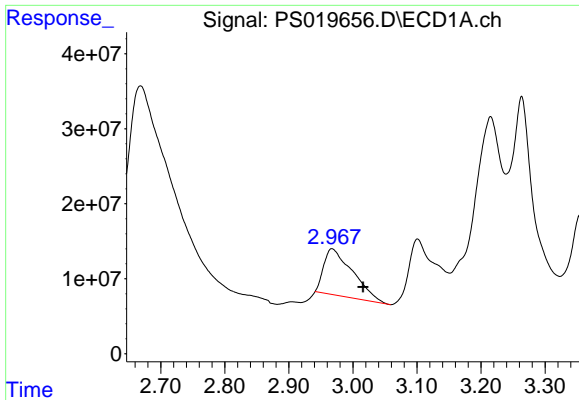
Data Path : Z:\pestpcbsrv\HPCHEM1\ECD\_S\Data\PS060822\  
 Data File : PS019656.D  
 Signal(s) : Signal #1: ECD1A.ch Signal #2: ECD2B.ch  
 Acq On : 09 Jun 2022 00:10  
 Operator : AJ\MA  
 Sample : N3215-01  
 Misc :  
 ALS Vial : 29 Sample Multiplier: 1

Instrument :  
 ECD\_S  
 ClientSampleId :

Integration File signal 1: autoint1.e  
 Integration File signal 2: autoint2.e  
 Quant Time: Jun 09 01:38:56 2022  
 Quant Method : Z:\pestpcbsrv\HPCHEM1\ECD\_S\Method\PS052422.M  
 Quant Title : 8080.M  
 QLast Update : Wed May 25 02:05:34 2022  
 Response via : Initial Calibration  
 Integrator: ChemStation

Volume Inj. : 2 µl  
 Signal #1 Phase : Rtx-CLPesticides Signal #2 Phase: Rtx-CLPesticides2  
 Signal #1 Info : 30M x 0.32mm x0.5 Signal #2 Info : 30M x 0.32mm x 0.25µm

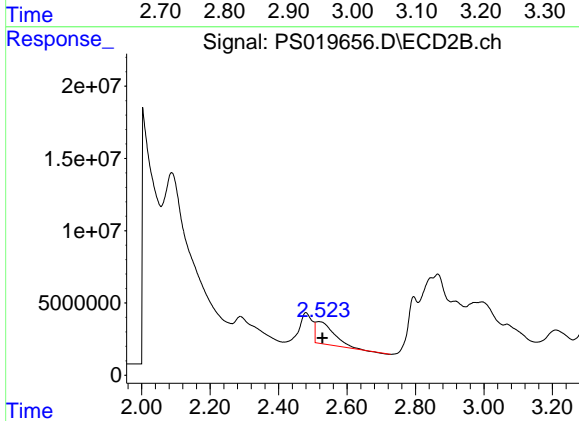




#1 Dalapon

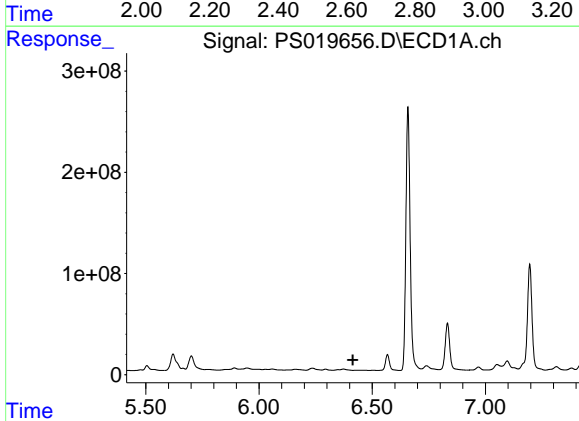
R.T.: 2.967 min  
 Delta R.T.: -0.049 min  
 Response: 193556126  
 Conc: 38.19 ng/ml

Instrument :  
 ECD\_S  
 ClientSampleId :



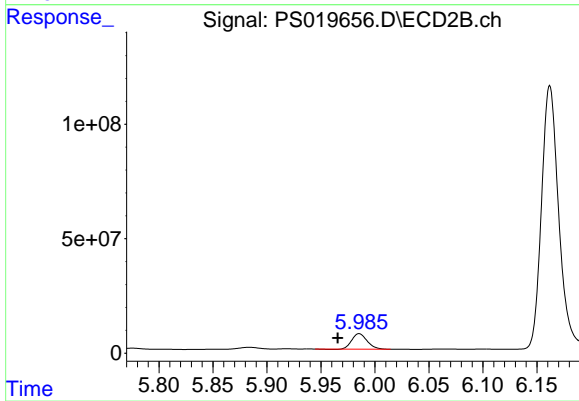
#1 Dalapon

R.T.: 2.517 min  
 Delta R.T.: -0.011 min  
 Response: 56300828  
 Conc: 56.11 ng/ml



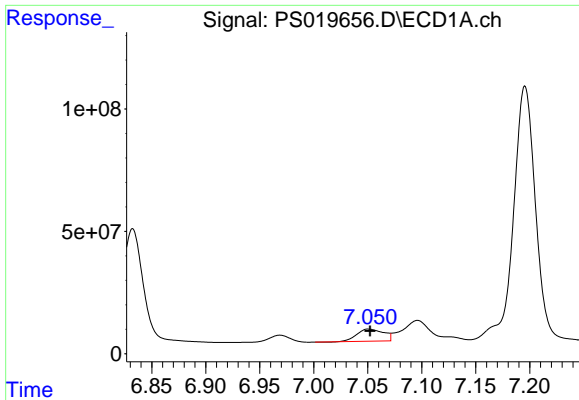
#2 3,5-DICHLOROBENZOIC ACID

R.T.: 6.430 min  
 Delta R.T.: 0.015 min  
 Response: -2424234  
 Conc: N.D.



#2 3,5-DICHLOROBENZOIC ACID

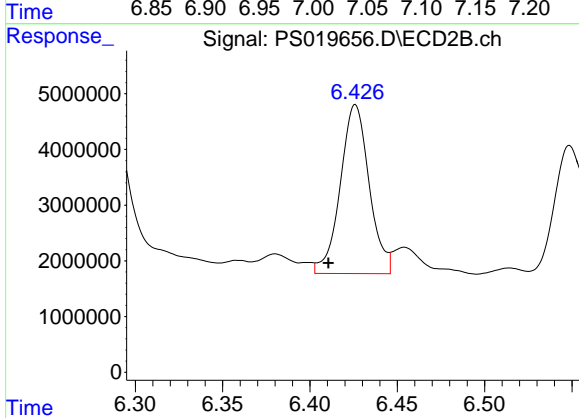
R.T.: 5.985 min  
 Delta R.T.: 0.020 min  
 Response: 67430346  
 Conc: 56.25 ng/ml



#3 4-Nitrophenol

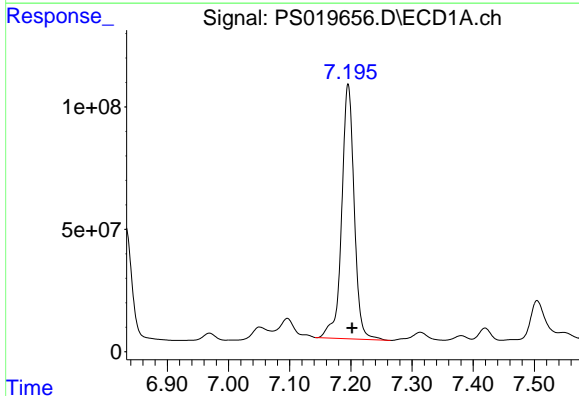
R.T.: 7.051 min  
 Delta R.T.: 0.000 min  
 Response: 84521713  
 Conc: 86.13 ng/ml

Instrument :  
 ECD\_S  
 ClientSampleId :



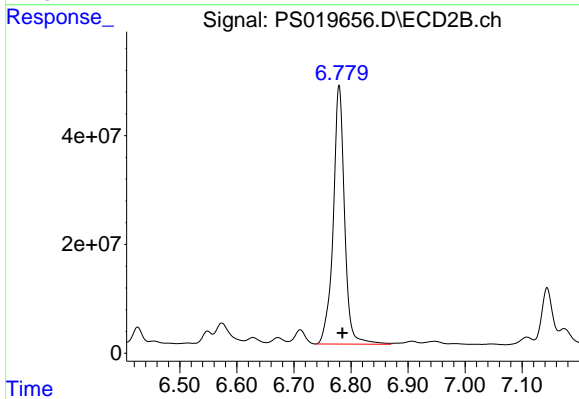
#3 4-Nitrophenol

R.T.: 6.426 min  
 Delta R.T.: 0.015 min  
 Response: 34999564  
 Conc: 81.77 ng/ml



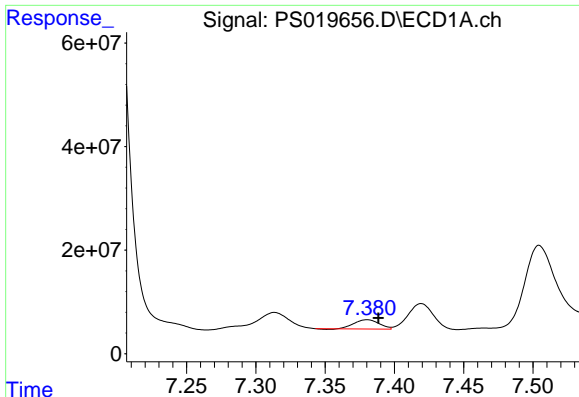
#4 2,4-DCAA

R.T.: 7.196 min  
 Delta R.T.: -0.006 min  
 Response: 1480995099  
 Conc: 617.30 ng/ml



#4 2,4-DCAA

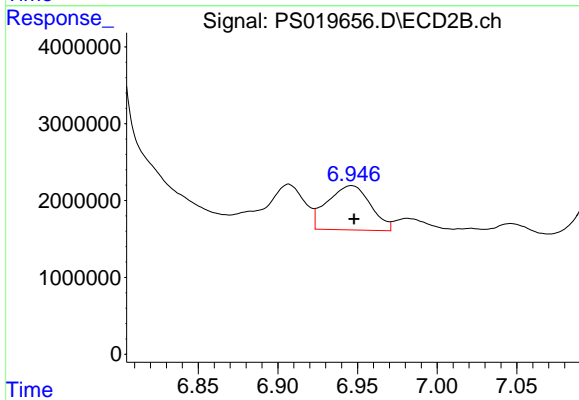
R.T.: 6.779 min  
 Delta R.T.: -0.005 min  
 Response: 659109801  
 Conc: 850.61 ng/ml



#5 DICAMBA

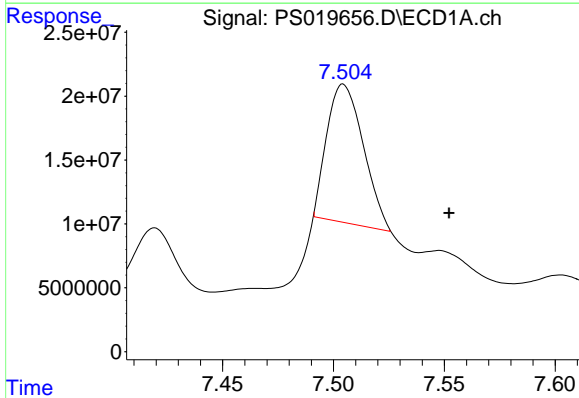
R.T.: 7.380 min  
 Delta R.T.: -0.008 min  
 Response: 21894003  
 Conc: 2.31 ng/ml

Instrument :  
 ECD\_S  
 ClientSampleId :



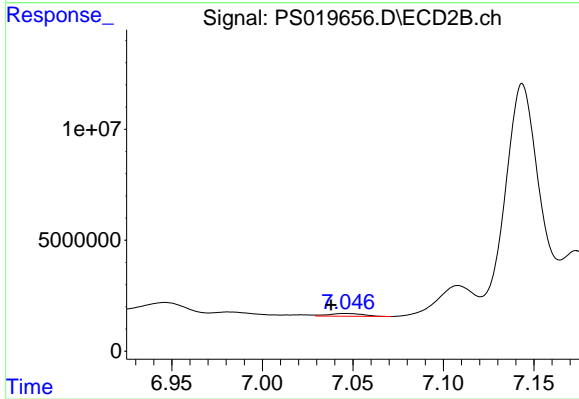
#5 DICAMBA

R.T.: 6.946 min  
 Delta R.T.: -0.002 min  
 Response: 10842888  
 Conc: 3.17 ng/ml



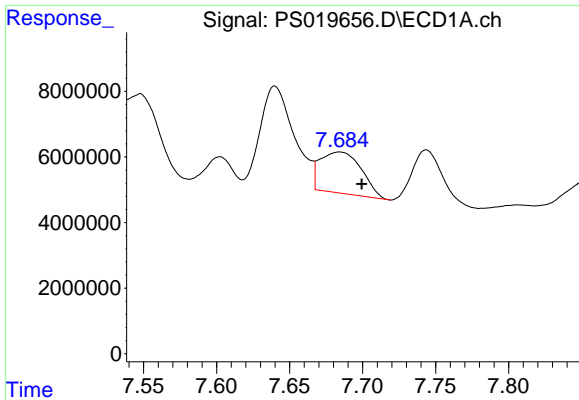
#6 MCPP

R.T.: 7.505 min  
 Delta R.T.: -0.048 min  
 Response: 122291346  
 Conc: 16.29 ug/ml



#6 MCPP

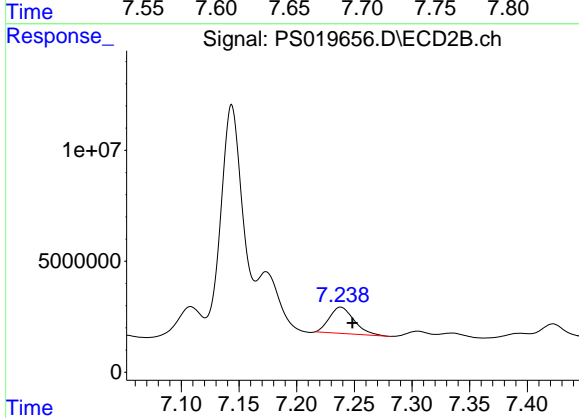
R.T.: 7.046 min  
 Delta R.T.: 0.008 min  
 Response: 1661189  
 Conc: N.D.



#7 MCPA

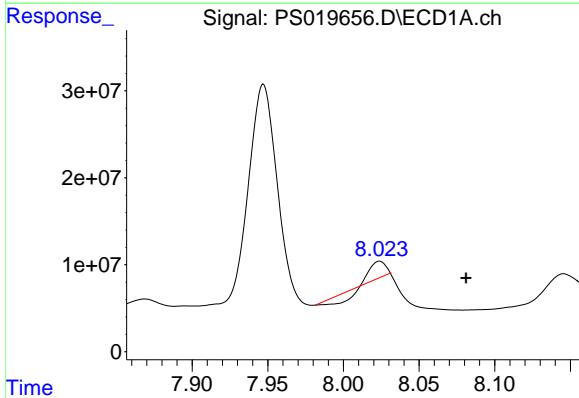
R.T.: 7.684 min  
 Delta R.T.: -0.015 min  
 Response: 24659362  
 Conc: 2.28 ug/ml

Instrument :  
 ECD\_S  
 ClientSampleId :



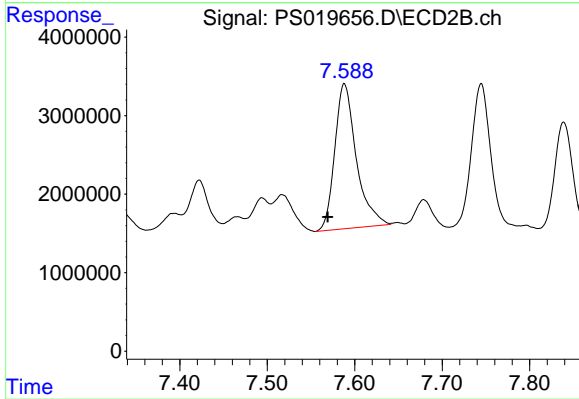
#7 MCPA

R.T.: 7.238 min  
 Delta R.T.: -0.010 min  
 Response: 17587749  
 Conc: 4.58 ug/ml



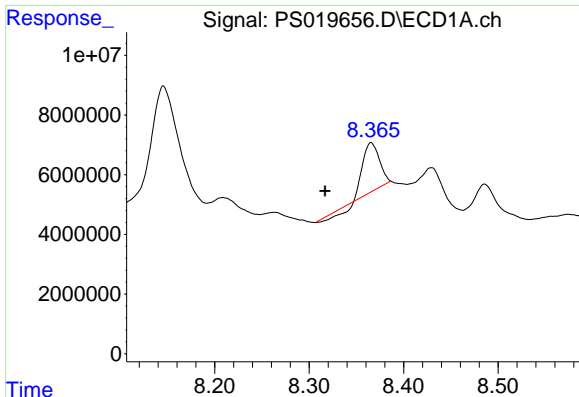
#8 DICHLORPROP

R.T.: 8.024 min  
 Delta R.T.: -0.057 min  
 Response: 4552270  
 Conc: 1.78 ng/ml



#8 DICHLORPROP

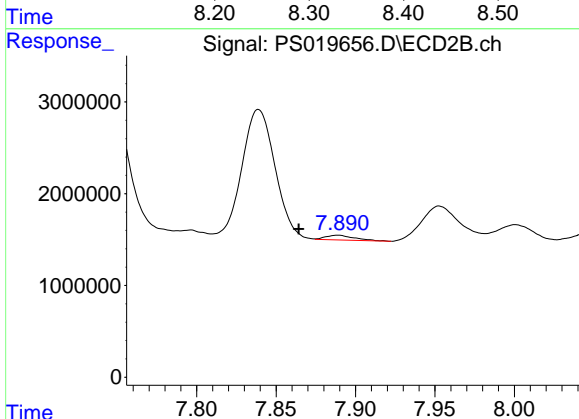
R.T.: 7.588 min  
 Delta R.T.: 0.019 min  
 Response: 31601147  
 Conc: 35.77 ng/ml



#9 2,4-D

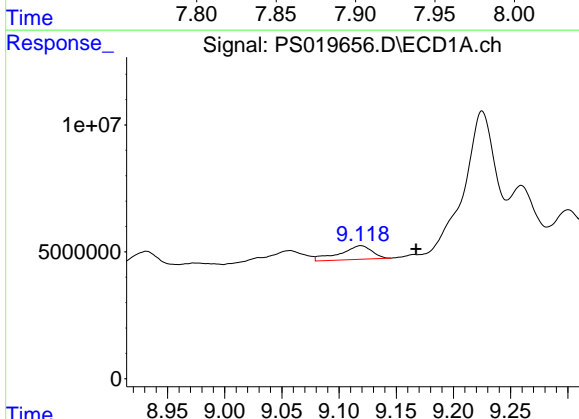
R.T.: 8.366 min  
 Delta R.T.: 0.049 min  
 Response: 17285276  
 Conc: 6.04 ng/ml

Instrument :  
 ECD\_S  
 ClientSampleId :



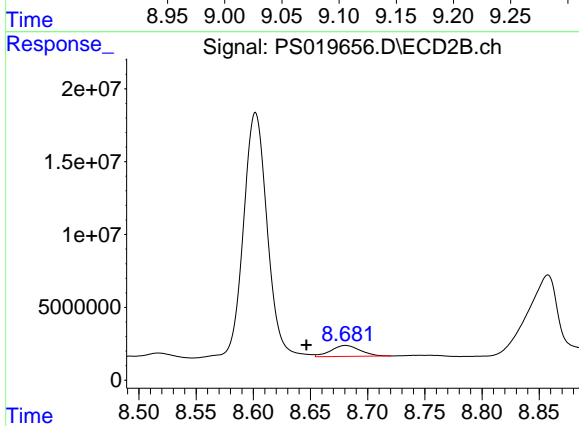
#9 2,4-D

R.T.: 7.889 min  
 Delta R.T.: 0.025 min  
 Response: 638512  
 Conc: N.D.



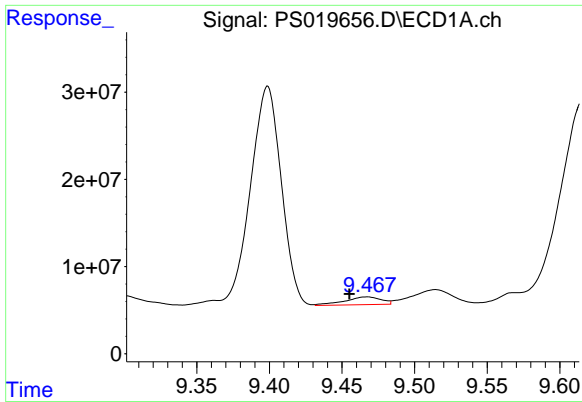
#11 2,4,5-TP (SILVEX)

R.T.: 9.119 min  
 Delta R.T.: -0.048 min  
 Response: 10645095  
 Conc: N.D.



#11 2,4,5-TP (SILVEX)

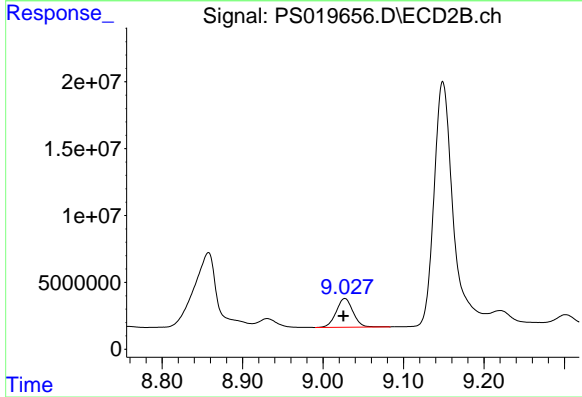
R.T.: 8.681 min  
 Delta R.T.: 0.034 min  
 Response: 13398269  
 Conc: 2.67 ng/ml



#12 2,4,5-T

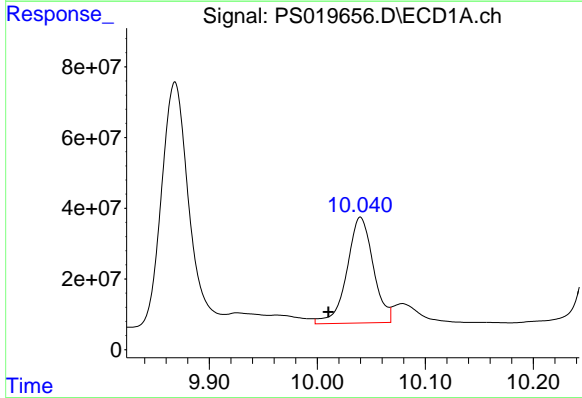
R.T.: 9.467 min  
 Delta R.T.: 0.012 min  
 Response: 15592281  
 Conc: N.D.

Instrument :  
 ECD\_S  
 ClientSampleId :



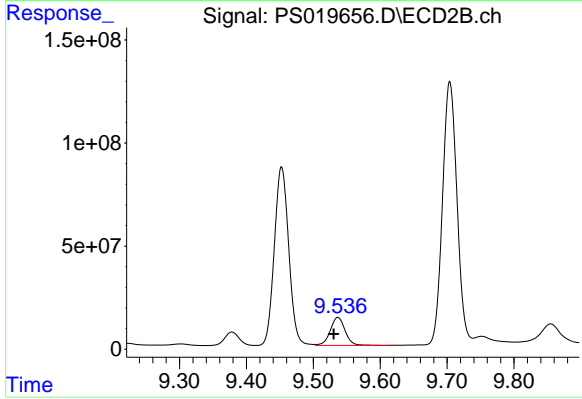
#12 2,4,5-T

R.T.: 9.027 min  
 Delta R.T.: 0.002 min  
 Response: 31208467  
 Conc: 6.64 ng/ml



#13 2,4-DB

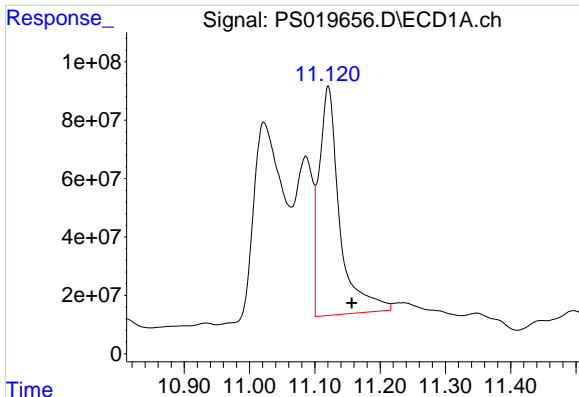
R.T.: 10.040 min  
 Delta R.T.: 0.030 min  
 Response: 505650236  
 Conc: 124.97 ng/ml



#13 2,4-DB

R.T.: 9.537 min  
 Delta R.T.: 0.006 min  
 Response: 208670905  
 Conc: 337.67 ng/ml

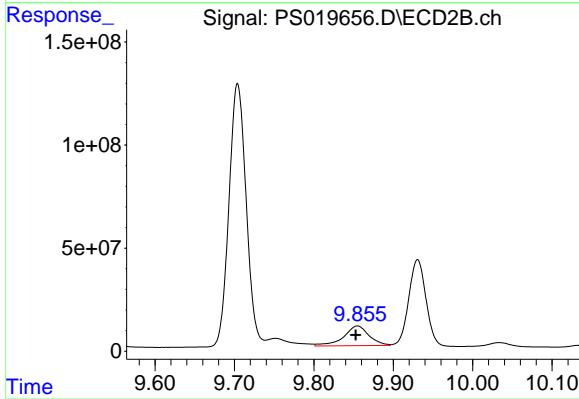




#14 DINOSEB

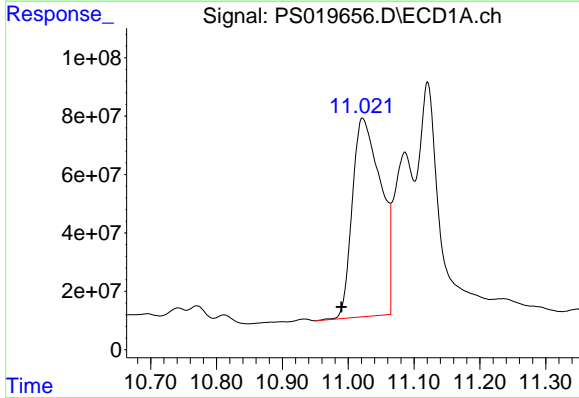
R.T.: 11.121 min  
 Delta R.T.: -0.036 min  
 Response: 1714137742  
 Conc: 110.82 ng/ml

Instrument :  
 ECD\_S  
 ClientSampleId :



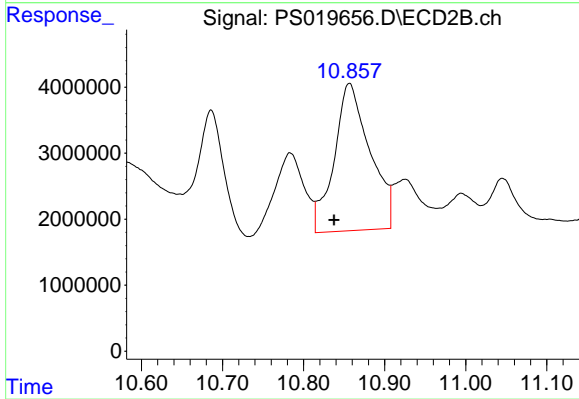
#14 DINOSEB

R.T.: 9.855 min  
 Delta R.T.: 0.002 min  
 Response: 213895741  
 Conc: 60.21 ng/ml



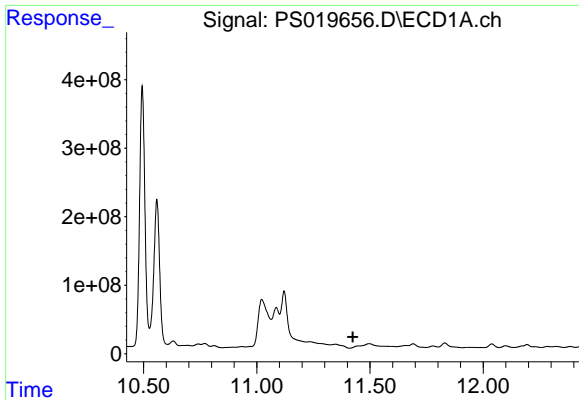
#15 Picloram

R.T.: 11.022 min  
 Delta R.T.: 0.033 min  
 Response: 2053546580  
 Conc: 69.20 ng/ml



#15 Picloram

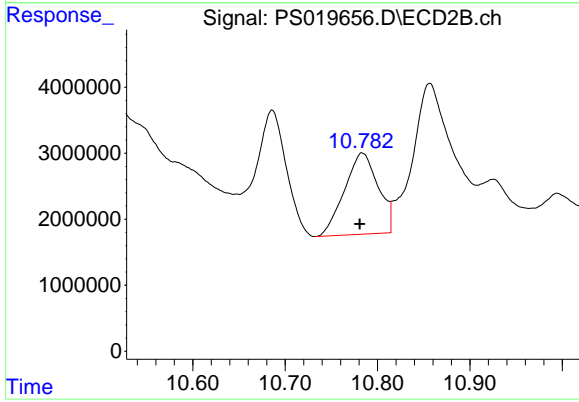
R.T.: 10.857 min  
 Delta R.T.: 0.019 min  
 Response: 68433604  
 Conc: 10.64 ng/ml



#16 DCPA

R.T.: 0.000 min  
 Exp R.T.: 11.424 min  
 Response: 0  
 Conc: N.D.

Instrument :  
 ECD\_S  
 ClientSampleId :



#16 DCPA

R.T.: 10.783 min  
 Delta R.T.: 0.002 min  
 Response: 31231938  
 Conc: 5.06 ng/ml