

Data Path : Z:\pestpcbsrv\HPCHEM1\ECD_S\Data\PS060920\
 Data File : PS010741.D
 Signal(s) : Signal #1: ECD1A.ch Signal #2: ECD2B.ch
 Acq On : 09 Jun 2020 23:29
 Operator : DD\AJ
 Sample : L2946-06
 Misc :
 ALS Vial : 20 Sample Multiplier: 1

Instrument :
 ECD_S
 ClientSampleId :

Integration File signal 1: autoint1.e
 Integration File signal 2: autoint2.e
 Quant Time: Jun 10 03:19:51 2020
 Quant Method : Z:\pestpcbsrv\HPCHEM1\ECD_S\Method\PS052920.M
 Quant Title : 8080.M
 QLast Update : Fri May 29 15:43:50 2020
 Response via : Initial Calibration
 Integrator: ChemStation

Volume Inj. : 2 µl
 Signal #1 Phase : Rtx-CLPesticides Signal #2 Phase: Rtx-CLPesticides2
 Signal #1 Info : 30M x 0.32mm x0.5 Signal #2 Info : 30M x 0.32mm x 0.25µm

Compound	RT#1	RT#2	Resp#1	Resp#2	ng/ml	ng/ml

System Monitoring Compounds						
4) S 2,4-DCAA	7.229	6.920	337.1E6	250.4E6	426.244	459.041
Target Compounds						
1) T Dalapon	2.996	2.585	37038335	104.0E6	37.671	142.078 #
2) T 3,5-DICHL...	0.000	6.100	0	95530814	N.D.	116.552
3) T 4-Nitroph...	6.999	0.000	4549651	0	12.272	N.D. #
5) T DICAMBA	7.409	7.055	5865755	12586842	1.865	5.592 #
7) T MCPA	7.685	7.456	112.0E6	88922191	32.027	32.719
8) T DICHLORPROP	0.000	7.739	0	8329967	N.D.	14.446
10) T Pentachlo...	8.711	0.000	7066666	0	<MDL	N.D. #
12) T 2,4,5-T	9.429	0.000	53024126	0	13.038	N.D. #
14) T DINOSEB	11.169	10.067	26831672	10599349	8.304	4.927 #
15) T Picloram	10.995	0.000	51522377	0	10.092	N.D. #

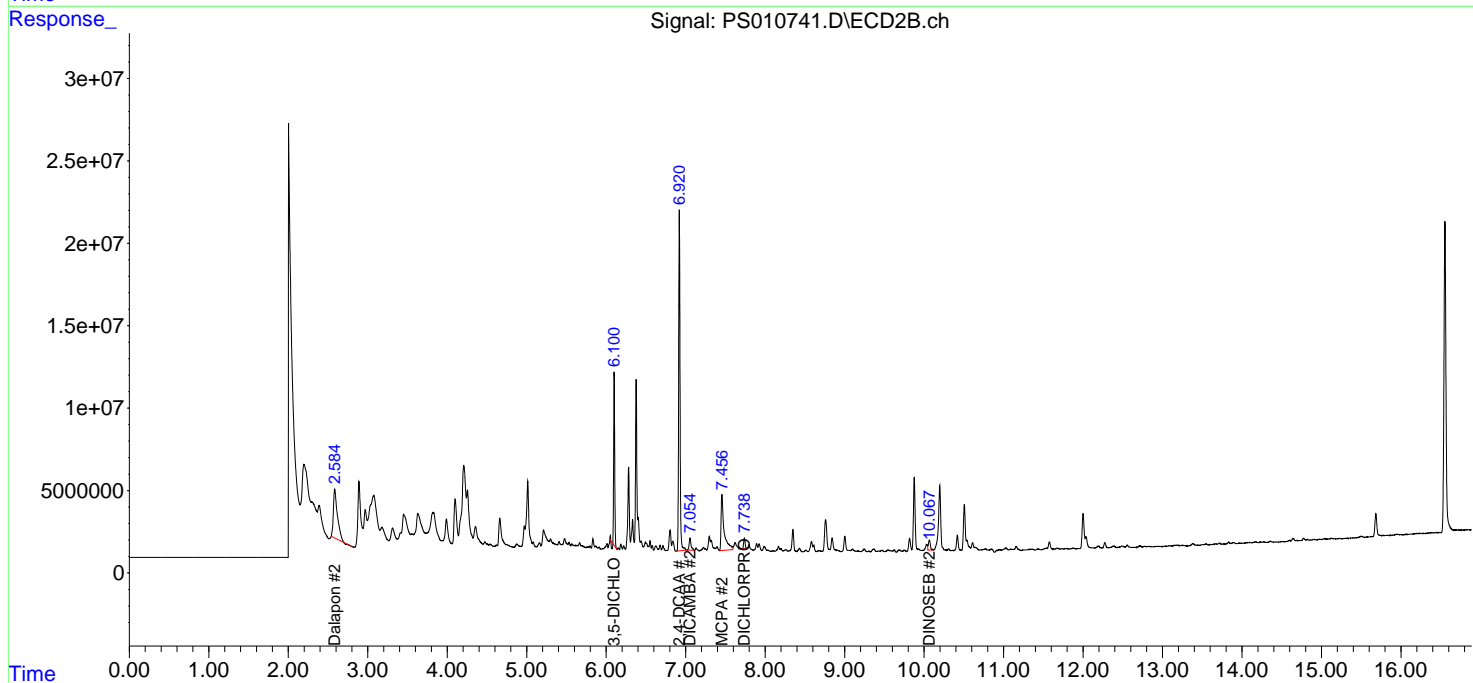
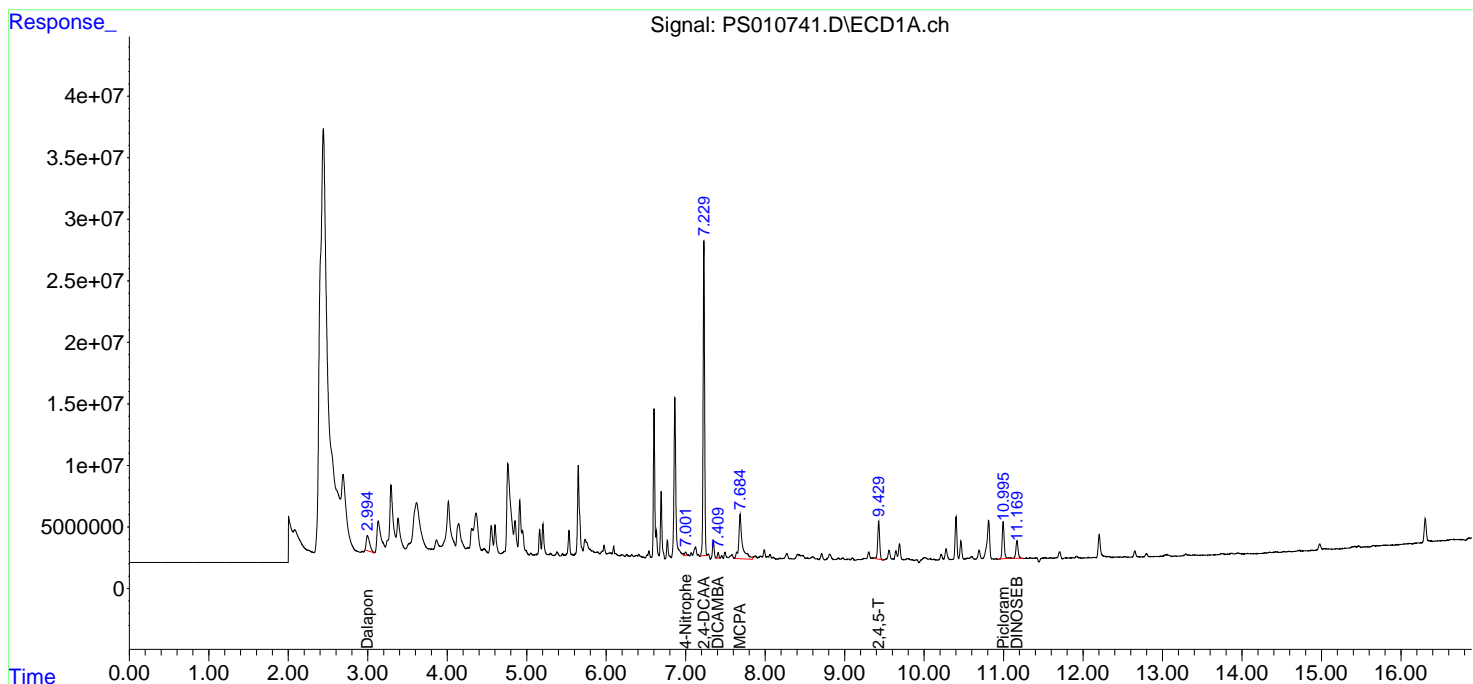
(f)=RT Delta > 1/2 Window (#)=Amounts differ by > 25% (m)=manual int.

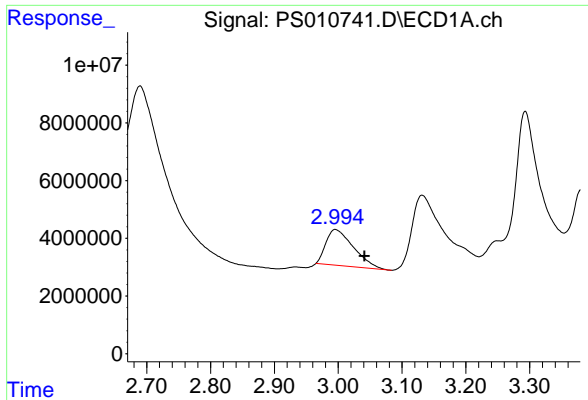
Data Path : Z:\pestpcbsrv\HPCHEM1\ECD_S\Data\PS060920\
 Data File : PS010741.D
 Signal(s) : Signal #1: ECD1A.ch Signal #2: ECD2B.ch
 Acq On : 09 Jun 2020 23:29
 Operator : DD\AJ
 Sample : L2946-06
 Misc :
 ALS Vial : 20 Sample Multiplier: 1

Instrument :
 ECD_S
 ClientSampled :

Integration File signal 1: autoint1.e
 Integration File signal 2: autoint2.e
 Quant Time: Jun 10 03:19:51 2020
 Quant Method : Z:\pestpcbsrv\HPCHEM1\ECD_S\Method\PS052920.M
 Quant Title : 8080.M
 QLast Update : Fri May 29 15:43:50 2020
 Response via : Initial Calibration
 Integrator: ChemStation

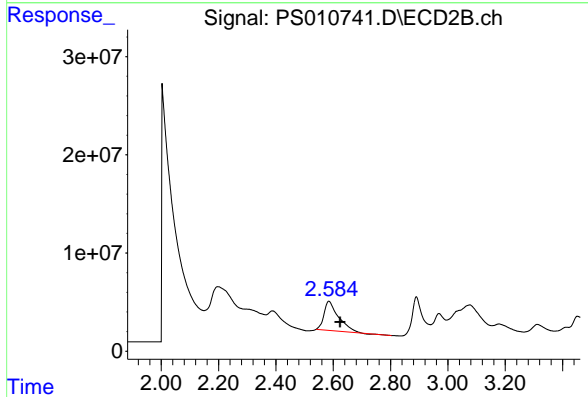
Volume Inj. : 2 µl
 Signal #1 Phase : Rtx-CLPesticides Signal #2 Phase: Rtx-CLPesticides2
 Signal #1 Info : 30M x 0.32mm x0.5 Signal #2 Info : 30M x 0.32mm x 0.25µm



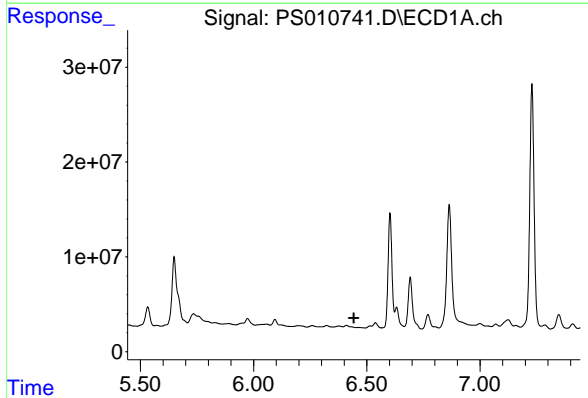


#1 Dalapon
 R.T.: 2.996 min
 Delta R.T.: -0.045 min
 Response: 37038335
 Conc: 37.67 ng/ml

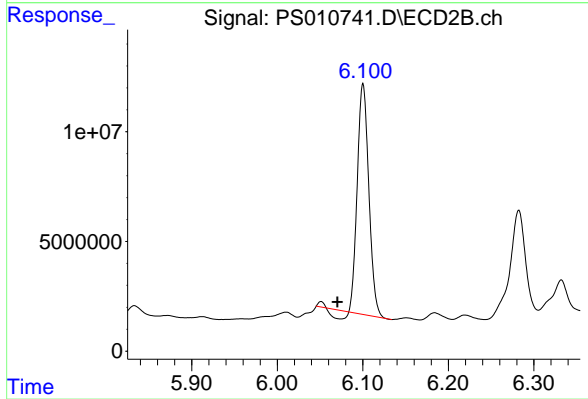
Instrument :
 ECD_S
 ClientSampleId :



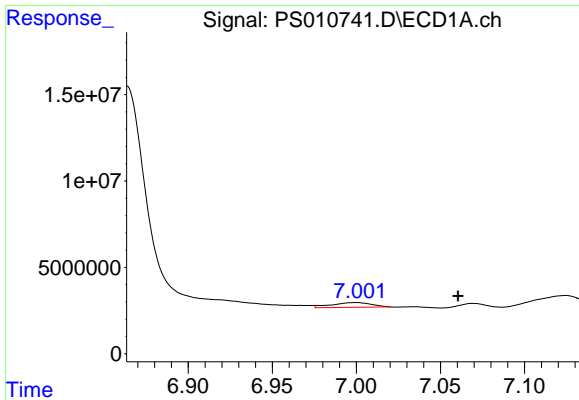
#1 Dalapon
 R.T.: 2.585 min
 Delta R.T.: -0.039 min
 Response: 104021569
 Conc: 142.08 ng/ml



#2 3,5-DICHLOROBENZOIC ACID
 R.T.: 0.000 min
 Exp R.T. : 6.443 min
 Response: 0
 Conc: N.D.

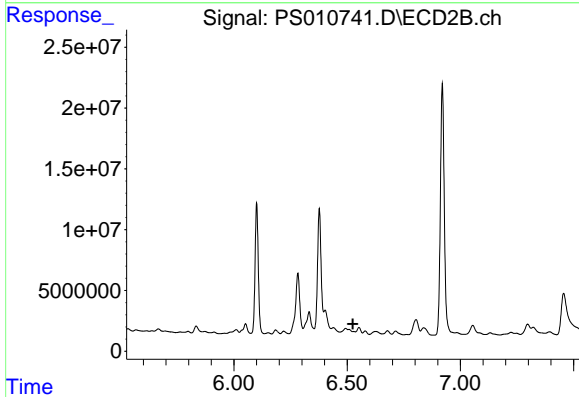


#2 3,5-DICHLOROBENZOIC ACID
 R.T.: 6.100 min
 Delta R.T.: 0.030 min
 Response: 95530814
 Conc: 116.55 ng/ml

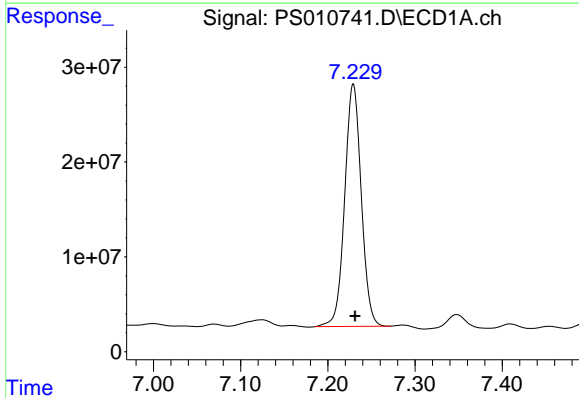


#3 4-Nitrophenol
 R.T.: 6.999 min
 Delta R.T.: -0.061 min
 Response: 4549651
 Conc: 12.27 ng/ml

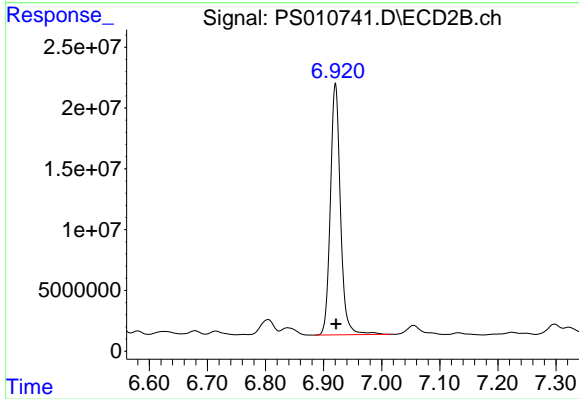
Instrument :
 ECD_S
 ClientSampled :



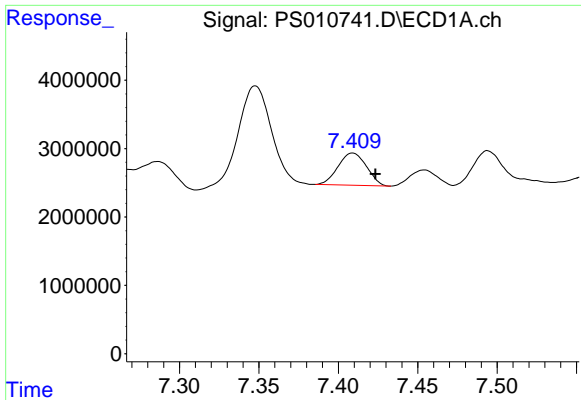
#3 4-Nitrophenol
 R.T.: 0.000 min
 Exp R.T. : 6.525 min
 Response: 0
 Conc: N.D.



#4 2,4-DCAA
 R.T.: 7.229 min
 Delta R.T.: -0.002 min
 Response: 337100281
 Conc: 426.24 ng/ml

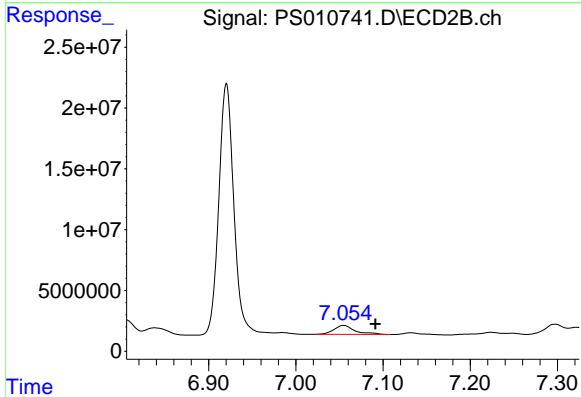


#4 2,4-DCAA
 R.T.: 6.920 min
 Delta R.T.: -0.001 min
 Response: 250368346
 Conc: 459.04 ng/ml

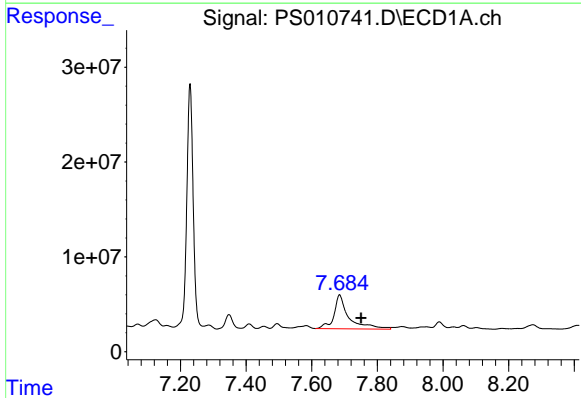


#5 DICAMBA
 R.T.: 7.409 min
 Delta R.T.: -0.014 min
 Response: 5865755
 Conc: 1.87 ng/ml

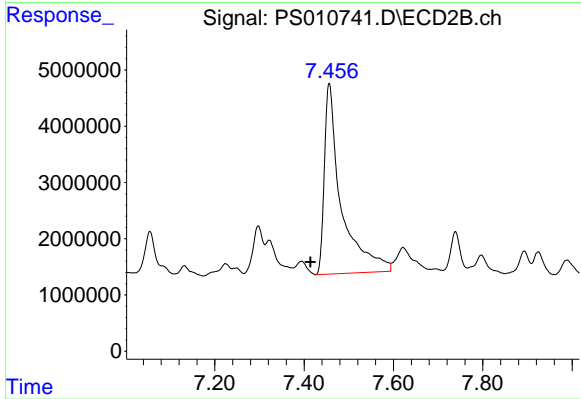
Instrument :
 ECD_S
 ClientSampled :



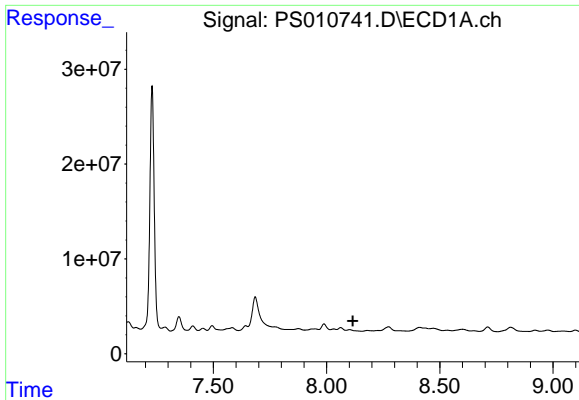
#5 DICAMBA
 R.T.: 7.055 min
 Delta R.T.: -0.036 min
 Response: 12586842
 Conc: 5.59 ng/ml



#7 MCPA
 R.T.: 7.685 min
 Delta R.T.: -0.066 min
 Response: 111965361
 Conc: 32.03 ug/ml



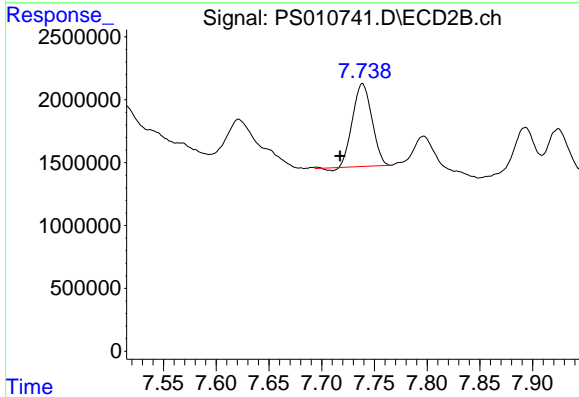
#7 MCPA
 R.T.: 7.456 min
 Delta R.T.: 0.043 min
 Response: 88922191
 Conc: 32.72 ug/ml



#8 DICHLORPROP

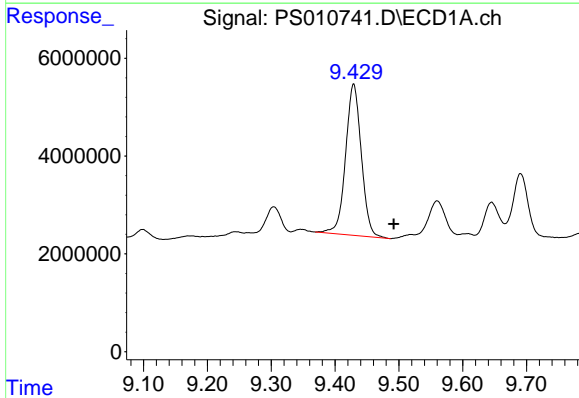
R.T.: 0.000 min
 Exp R.T.: 8.116 min
 Response: 0
 Conc: N.D.

Instrument :
 ECD_S
 ClientSampleId :



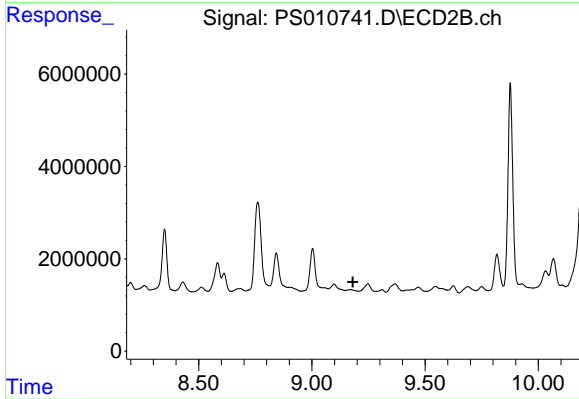
#8 DICHLORPROP

R.T.: 7.739 min
 Delta R.T.: 0.021 min
 Response: 8329967
 Conc: 14.45 ng/ml



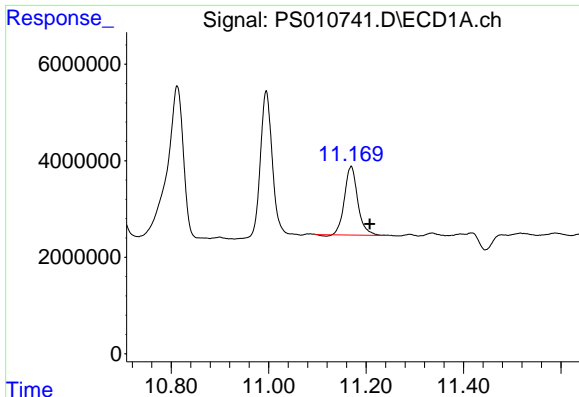
#12 2,4,5-T

R.T.: 9.429 min
 Delta R.T.: -0.063 min
 Response: 53024126
 Conc: 13.04 ng/ml



#12 2,4,5-T

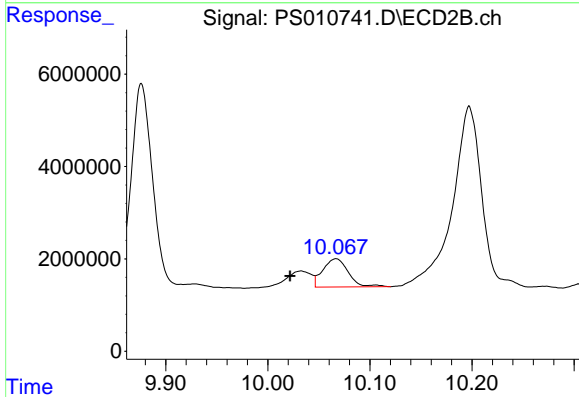
R.T.: 0.000 min
 Exp R.T.: 9.181 min
 Response: 0
 Conc: N.D.



#14 DINOSEB

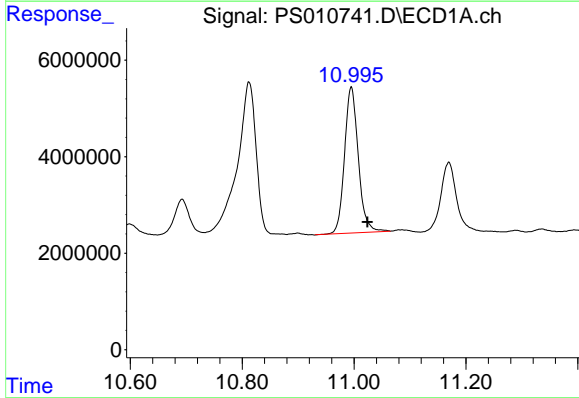
R.T.: 11.169 min
 Delta R.T.: -0.038 min
 Response: 26831672
 Conc: 8.30 ng/ml

Instrument :
 ECD_S
 ClientSampleId :



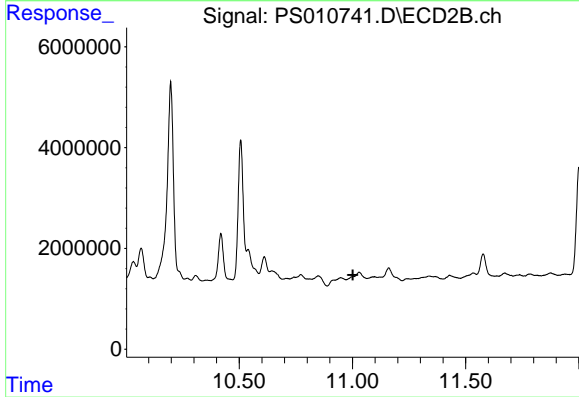
#14 DINOSEB

R.T.: 10.067 min
 Delta R.T.: 0.045 min
 Response: 10599349
 Conc: 4.93 ng/ml



#15 Picloram

R.T.: 10.995 min
 Delta R.T.: -0.029 min
 Response: 51522377
 Conc: 10.09 ng/ml



#15 Picloram

R.T.: 0.000 min
 Exp R.T. : 11.002 min
 Response: 0
 Conc: N.D.