

Data Path : Z:\pestpcbsrv\HPCHEM1\ECD_S\Data\PS060920\
 Data File : PS010754.D
 Signal(s) : Signal #1: ECD1A.ch Signal #2: ECD2B.ch
 Acq On : 10 Jun 2020 04:27
 Operator : DD\AJ
 Sample : L2950-01
 Misc :
 ALS Vial : 31 Sample Multiplier: 1

Instrument :
 ECD_S
 ClientSampleId :

Integration File signal 1: autoint1.e
 Integration File signal 2: autoint2.e
 Quant Time: Jun 10 06:05:19 2020
 Quant Method : Z:\pestpcbsrv\HPCHEM1\ECD_S\Method\PS052920.M
 Quant Title : 8080.M
 QLast Update : Fri May 29 15:43:50 2020
 Response via : Initial Calibration
 Integrator: ChemStation

Volume Inj. : 2 µl
 Signal #1 Phase : Rtx-CLPesticides Signal #2 Phase: Rtx-CLPesticides2
 Signal #1 Info : 30M x 0.32mm x0.5 Signal #2 Info : 30M x 0.32mm x 0.25µm

	Compound	RT#1	RT#2	Resp#1	Resp#2	ng/ml	ng/ml

System Monitoring Compounds							
4) S	2,4-DCAA	7.229	6.920	235.3E6	172.8E6	297.553	316.909
Target Compounds							
1) T	Dalapon	2.995	2.585	31321665	89417970	31.857	122.132 #
2) T	3,5-DICHL...	0.000	6.101	0	126.0E6	N.D.	153.691
3) T	4-Nitroph...	7.074	0.000	13105155	0	35.350	N.D. #
5) T	DICAMBA	7.432	7.056	11033631	17990121	3.509	7.993 #
6) T	MCP P	7.641	0.000	7490795	0	3.032	N.D. #
7) T	MCPA	7.778	7.384	47982153	44344551	13.725	16.317
8) T	DICHLORPROP	0.000	7.738	0	5836474	N.D.	10.122
10) T	Pentachlo...	8.654	8.440	8824307	15486138	<MDL	2.180 #
11) T	2,4,5-TP ...	0.000	8.846	0	9806666	N.D.	3.265
12) T	2,4,5-T	9.429	0.000	38583053	0	9.487	N.D. #
13) T	2,4-DB	0.000	9.710	0	10156996	N.D.	25.004
14) T	DINOSEB	11.170	10.032	26856306	19600013	8.312	9.110
15) T	Picloram	10.995	0.000	43570025	0	8.535	N.D. #
16) T	DCPA	11.495	0.000	29790913	0	5.560	N.D. #

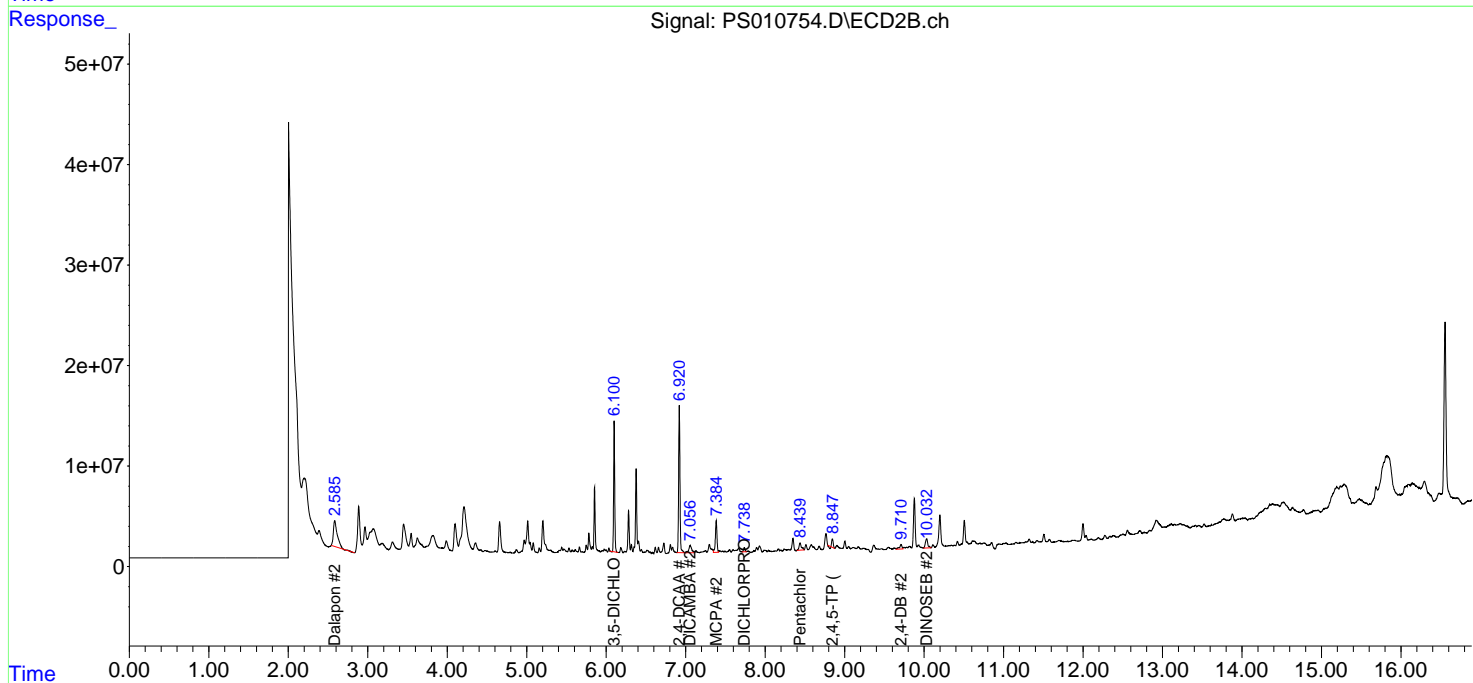
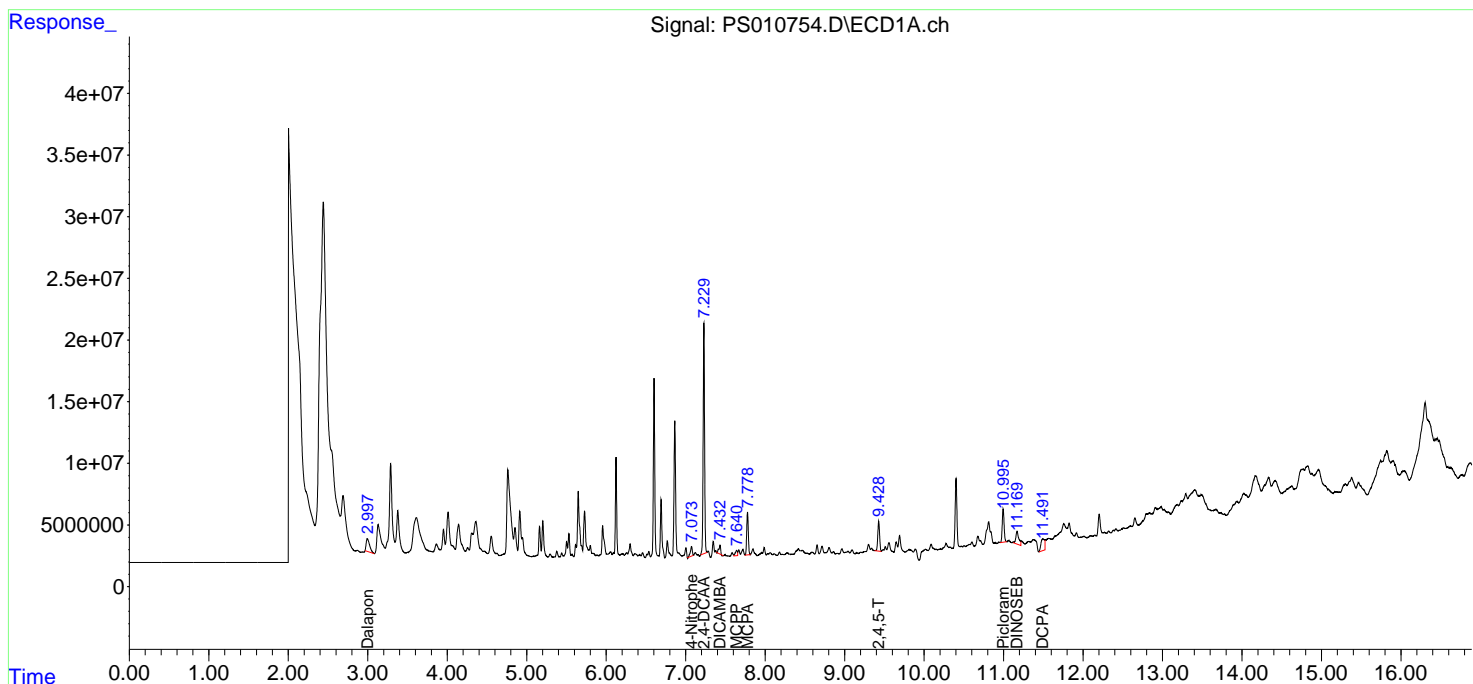
(f)=RT Delta > 1/2 Window (#)=Amounts differ by > 25% (m)=manual int.

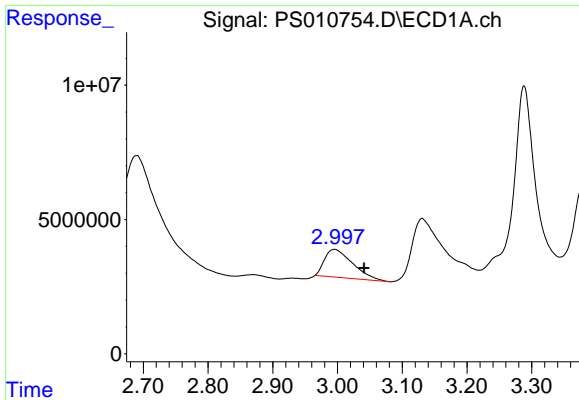
Data Path : Z:\pestpcbsrv\HPCHEM1\ECD_S\Data\PS060920\
 Data File : PS010754.D
 Signal(s) : Signal #1: ECD1A.ch Signal #2: ECD2B.ch
 Acq On : 10 Jun 2020 04:27
 Operator : DD\AJ
 Sample : L2950-01
 Misc :
 ALS Vial : 31 Sample Multiplier: 1

Instrument :
 ECD_S
 ClientSampled :

Integration File signal 1: autoint1.e
 Integration File signal 2: autoint2.e
 Quant Time: Jun 10 06:05:19 2020
 Quant Method : Z:\pestpcbsrv\HPCHEM1\ECD_S\Method\PS052920.M
 Quant Title : 8080.M
 QLast Update : Fri May 29 15:43:50 2020
 Response via : Initial Calibration
 Integrator: ChemStation

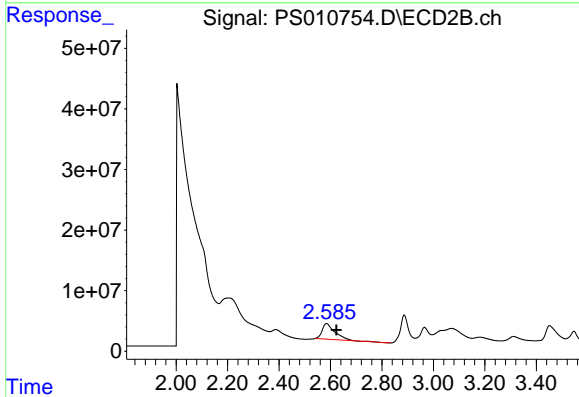
Volume Inj. : 2 µl
 Signal #1 Phase : Rtx-CLPesticides Signal #2 Phase: Rtx-CLPesticides2
 Signal #1 Info : 30M x 0.32mm x0.5 Signal #2 Info : 30M x 0.32mm x 0.25µm



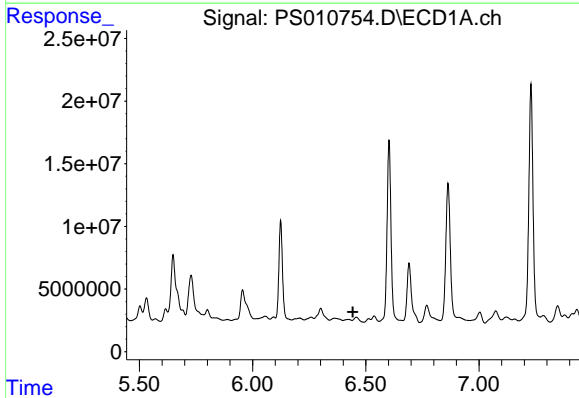


#1 Dalapon
 R.T.: 2.995 min
 Delta R.T.: -0.046 min
 Response: 31321665
 Conc: 31.86 ng/ml

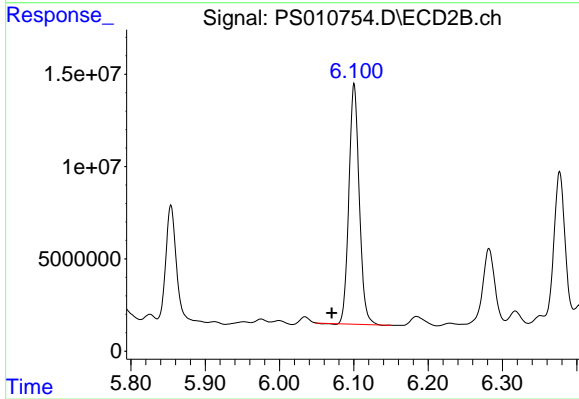
Instrument :
 ECD_S
 ClientSampleId :



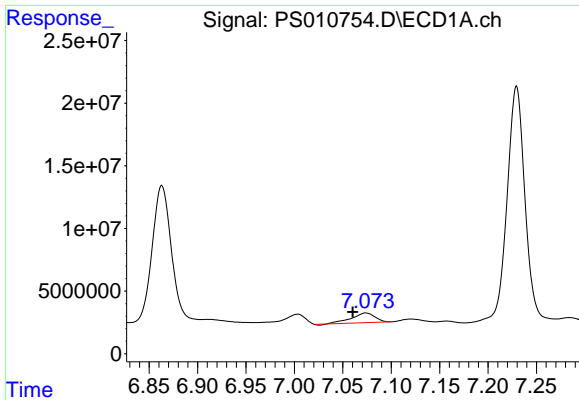
#1 Dalapon
 R.T.: 2.585 min
 Delta R.T.: -0.039 min
 Response: 89417970
 Conc: 122.13 ng/ml



#2 3,5-DICHLOROBENZOIC ACID
 R.T.: 0.000 min
 Exp R.T. : 6.443 min
 Response: 0
 Conc: N.D.

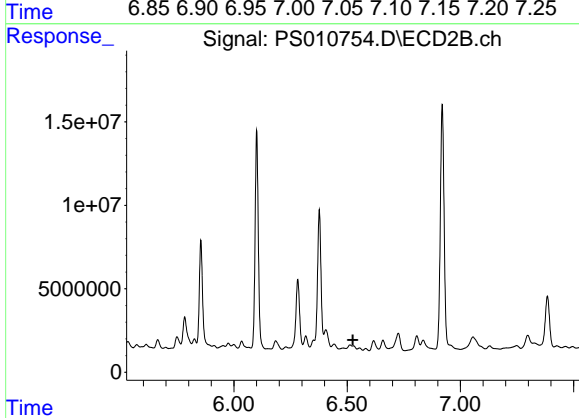


#2 3,5-DICHLOROBENZOIC ACID
 R.T.: 6.101 min
 Delta R.T.: 0.030 min
 Response: 125971580
 Conc: 153.69 ng/ml

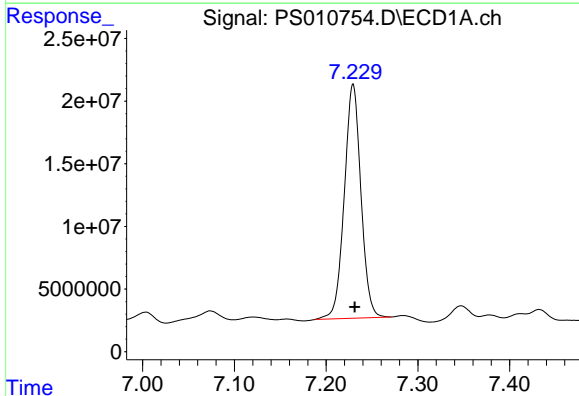


#3 4-Nitrophenol
 R.T.: 7.074 min
 Delta R.T.: 0.013 min
 Response: 13105155
 Conc: 35.35 ng/ml

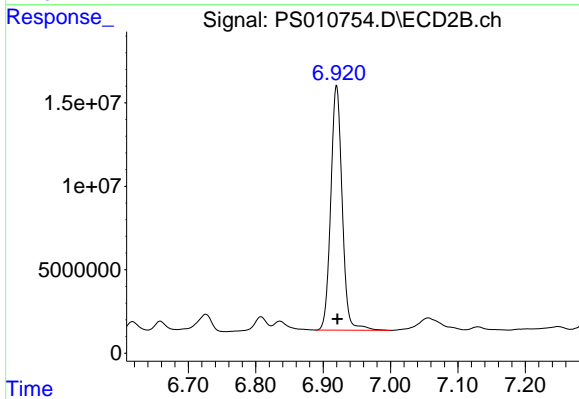
Instrument :
 ECD_S
 ClientSampled :



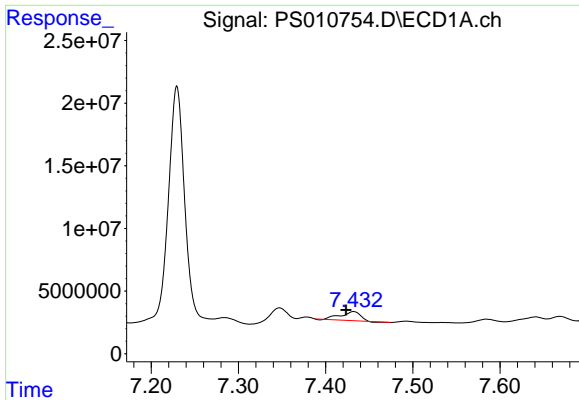
#3 4-Nitrophenol
 R.T.: 0.000 min
 Exp R.T. : 6.525 min
 Response: 0
 Conc: N.D.



#4 2,4-DCAA
 R.T.: 7.229 min
 Delta R.T.: -0.002 min
 Response: 235323373
 Conc: 297.55 ng/ml

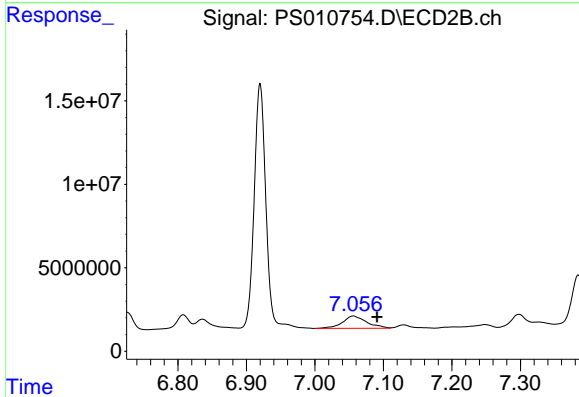


#4 2,4-DCAA
 R.T.: 6.920 min
 Delta R.T.: -0.001 min
 Response: 172847273
 Conc: 316.91 ng/ml

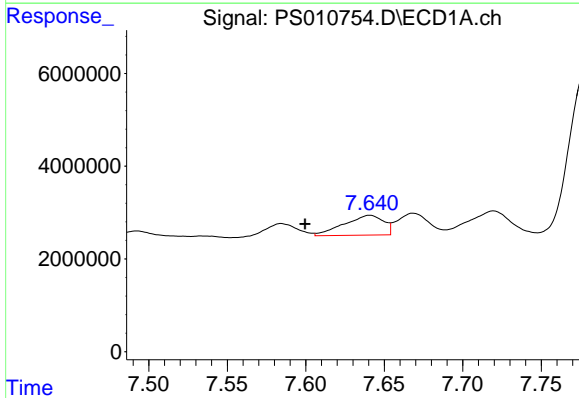


#5 DICAMBA
 R.T.: 7.432 min
 Delta R.T.: 0.009 min
 Response: 11033631
 Conc: 3.51 ng/ml

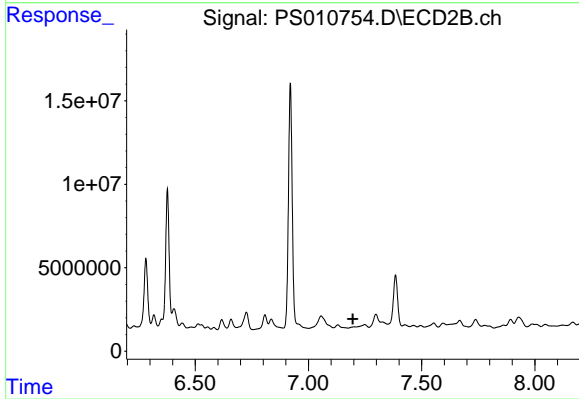
Instrument :
 ECD_S
 ClientSampled :



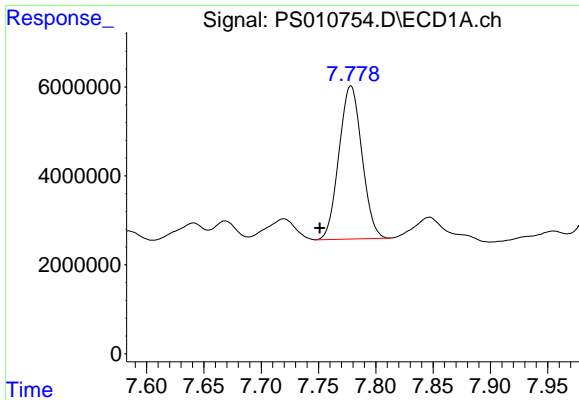
#5 DICAMBA
 R.T.: 7.056 min
 Delta R.T.: -0.035 min
 Response: 17990121
 Conc: 7.99 ng/ml



#6 MCPP
 R.T.: 7.641 min
 Delta R.T.: 0.041 min
 Response: 7490795
 Conc: 3.03 ug/ml



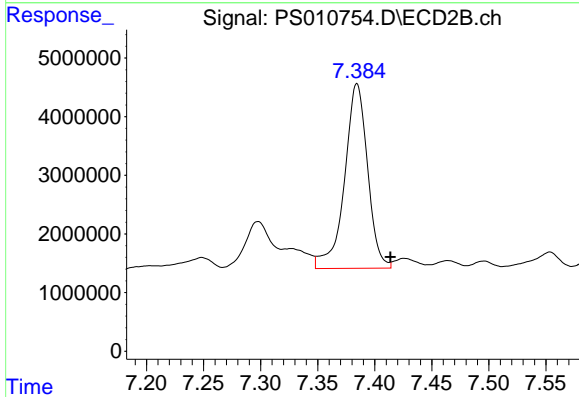
#6 MCPP
 R.T.: 0.000 min
 Exp R.T.: 7.196 min
 Response: 0
 Conc: N.D.



#7 MCPA

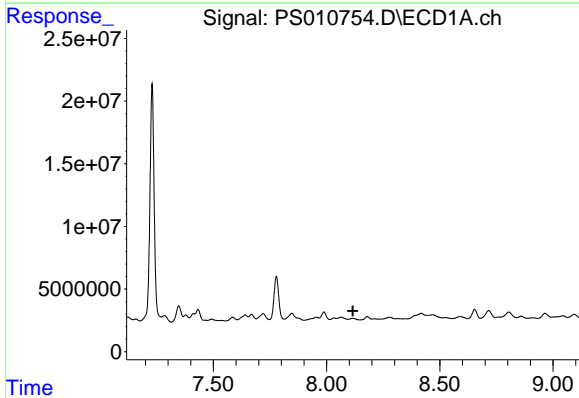
R.T.: 7.778 min
 Delta R.T.: 0.027 min
 Response: 47982153
 Conc: 13.72 ug/ml

Instrument :
 ECD_S
 ClientSampled :



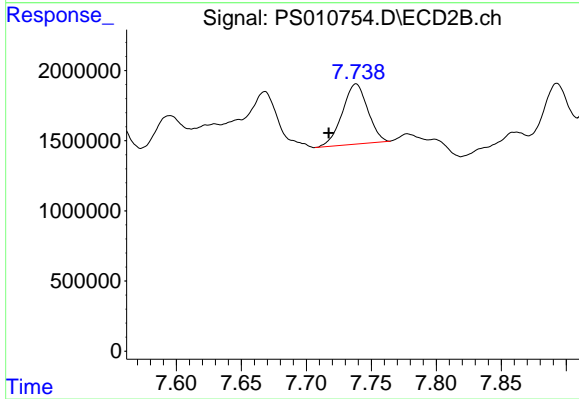
#7 MCPA

R.T.: 7.384 min
 Delta R.T.: -0.029 min
 Response: 44344551
 Conc: 16.32 ug/ml



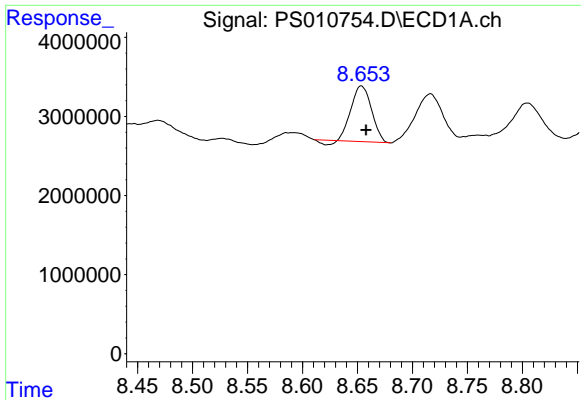
#8 DICHLORPROP

R.T.: 0.000 min
 Exp R.T. : 8.116 min
 Response: 0
 Conc: N.D.



#8 DICHLORPROP

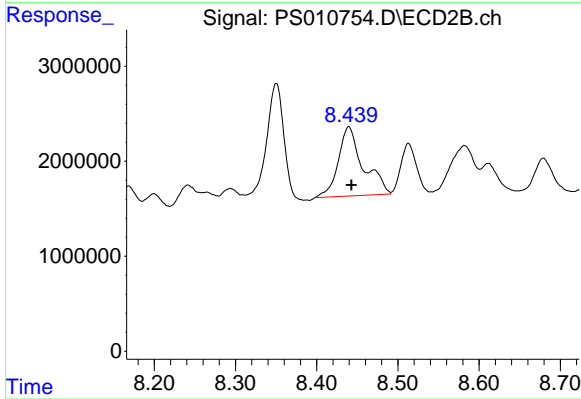
R.T.: 7.738 min
 Delta R.T.: 0.021 min
 Response: 5836474
 Conc: 10.12 ng/ml



#10 Pentachlorophenol

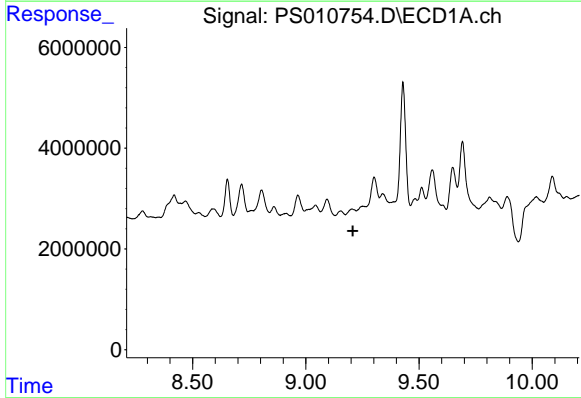
R.T.: 8.654 min
 Delta R.T.: -0.004 min
 Response: 8824307
 Conc: N.D.

Instrument :
 ECD_S
 ClientSampleId :



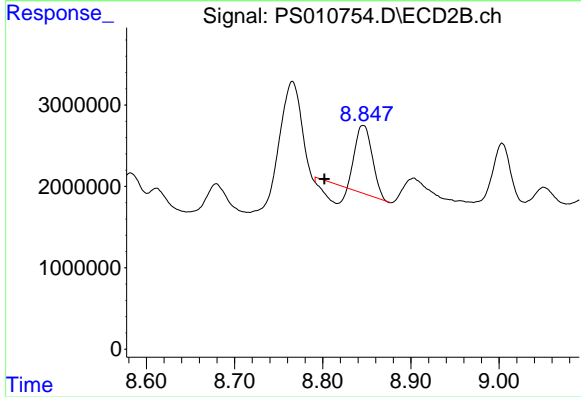
#10 Pentachlorophenol

R.T.: 8.440 min
 Delta R.T.: -0.003 min
 Response: 15486138
 Conc: 2.18 ng/ml



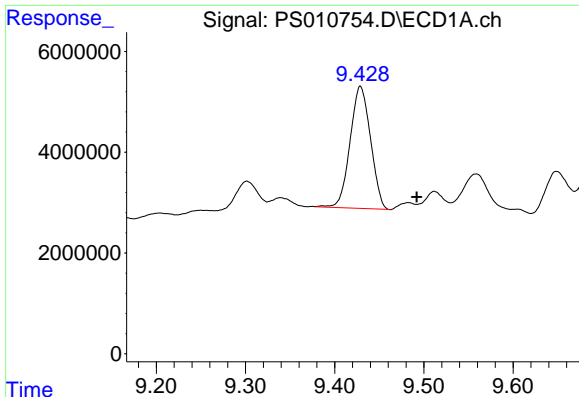
#11 2,4,5-TP (SILVEX)

R.T.: 0.000 min
 Exp R.T. : 9.208 min
 Response: 0
 Conc: N.D.



#11 2,4,5-TP (SILVEX)

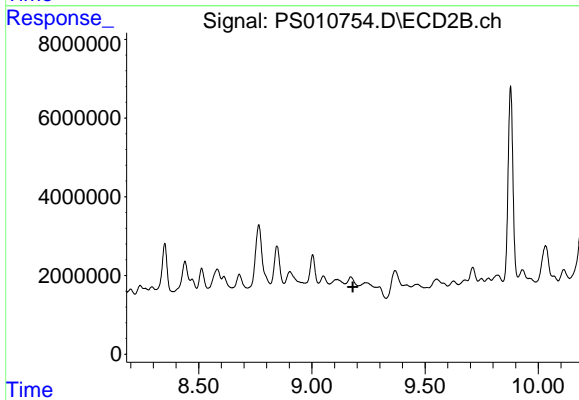
R.T.: 8.846 min
 Delta R.T.: 0.044 min
 Response: 9806666
 Conc: 3.27 ng/ml



#12 2,4,5-T

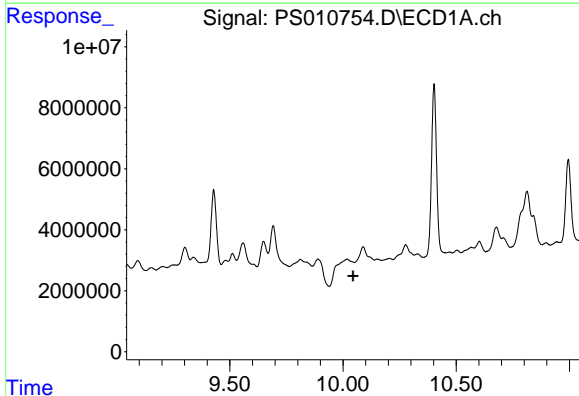
R.T.: 9.429 min
 Delta R.T.: -0.063 min
 Response: 38583053
 Conc: 9.49 ng/ml

Instrument :
 ECD_S
 ClientSampled :



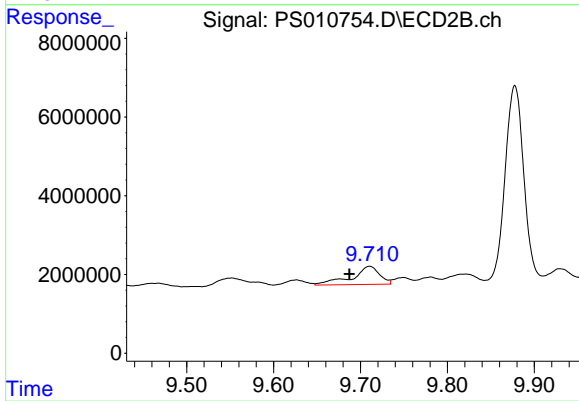
#12 2,4,5-T

R.T.: 0.000 min
 Exp R.T. : 9.181 min
 Response: 0
 Conc: N.D.



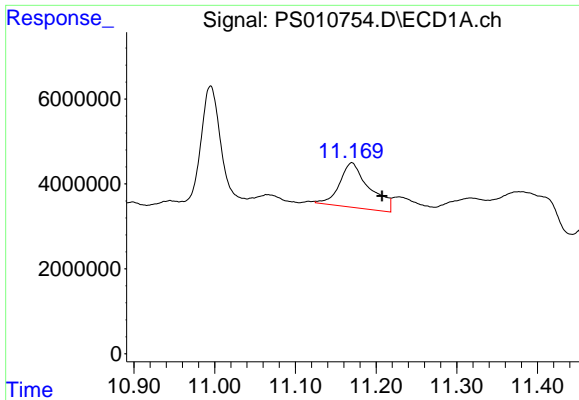
#13 2,4-DB

R.T.: 0.000 min
 Exp R.T. : 10.044 min
 Response: 0
 Conc: N.D.



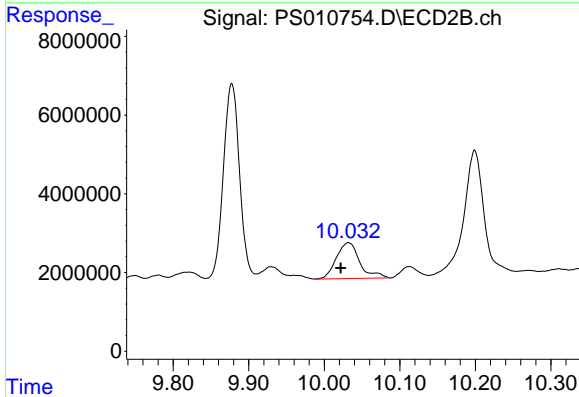
#13 2,4-DB

R.T.: 9.710 min
 Delta R.T.: 0.023 min
 Response: 10156996
 Conc: 25.00 ng/ml

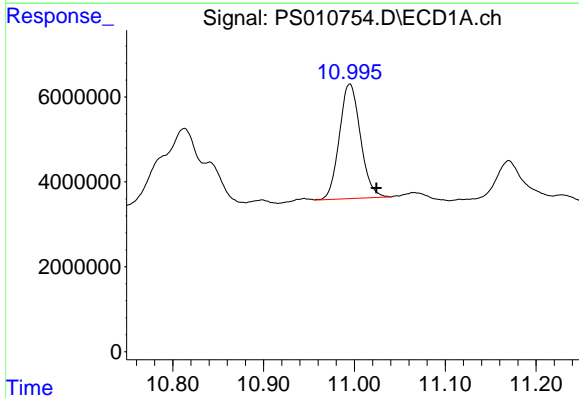


#14 DINOSEB
 R.T.: 11.170 min
 Delta R.T.: -0.038 min
 Response: 26856306
 Conc: 8.31 ng/ml

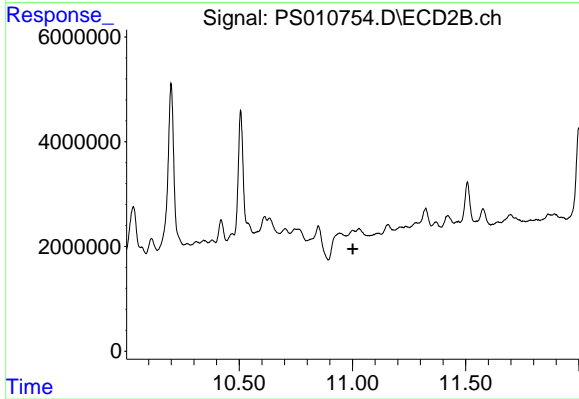
Instrument :
 ECD_S
 ClientSampleId :



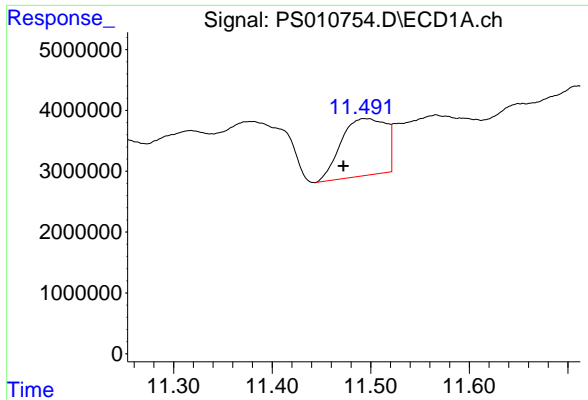
#14 DINOSEB
 R.T.: 10.032 min
 Delta R.T.: 0.010 min
 Response: 19600013
 Conc: 9.11 ng/ml



#15 Picloram
 R.T.: 10.995 min
 Delta R.T.: -0.029 min
 Response: 43570025
 Conc: 8.53 ng/ml

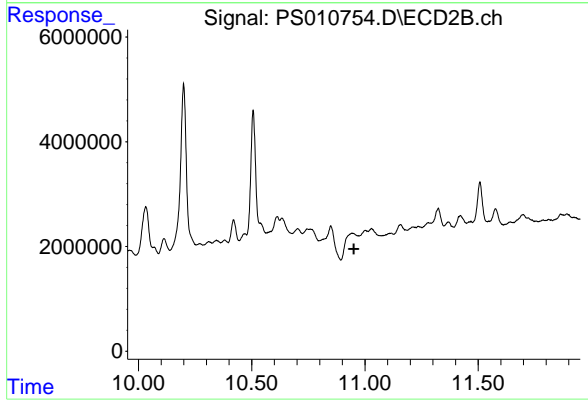


#15 Picloram
 R.T.: 0.000 min
 Exp R.T. : 11.002 min
 Response: 0
 Conc: N.D.



#16 DCPA
R.T.: 11.495 min
Delta R.T.: 0.023 min
Response: 29790913
Conc: 5.56 ng/ml

Instrument :
ECD_S
ClientSampleId :



#16 DCPA
R.T.: 0.000 min
Exp R.T. : 10.951 min
Response: 0
Conc: N.D.