

Data Path : Z:\pestpcbsrv\HPCHEM1\ECD_S\Data\PS060921\
 Data File : PS015342.D
 Signal(s) : Signal #1: ECD1A.ch Signal #2: ECD2B.ch
 Acq On : 10 Jun 2021 00:00
 Operator : DD\AJ
 Sample : HSTDCCC750
 Misc :
 ALS Vial : 3 Sample Multiplier: 1

Instrument :
 ECD_S
 ClientSampleId :

Integration File signal 1: autoint1.e
 Integration File signal 2: autoint2.e
 Quant Time: Jun 10 01:31:53 2021
 Quant Method : Z:\pestpcbsrv\HPCHEM1\ECD_S\Method\PS052821.M
 Quant Title : 8080.M
 QLast Update : Fri May 28 14:34:22 2021
 Response via : Initial Calibration
 Integrator: ChemStation

Volume Inj. : 2 µl
 Signal #1 Phase : Rtx-CLPesticides Signal #2 Phase: Rtx-CLPesticides2
 Signal #1 Info : 30M x 0.32mm x0.5 Signal #2 Info : 30M x 0.32mm x 0.25µm

	Compound	RT#1	RT#2	Resp#1	Resp#2	ng/ml	ng/ml

System Monitoring Compounds							
4) S	2,4-DCAA	7.224	6.783	1727.0E6	386.6E6	685.217	721.557
Target Compounds							
1) T	Dalapon	3.039	2.523	1612.8E6	427.5E6	613.627	653.188
2) T	3,5-DICHL...	6.436	5.969	2171.8E6	542.3E6	629.808	671.284
3) T	4-Nitroph...	7.050	6.399	853.9E6	207.3E6	605.759	651.653
5) T	DICAMBA	7.417	6.948	6325.8E6	1537.9E6	663.661	694.948
6) T	MCPD	7.588	7.045	495.2E6	122.9E6	68.814	69.555
7) T	MCPA	7.736	7.258	687.9E6	179.5E6	68.540	69.074
8) T	DICHLORPROP	8.111	7.569	1506.1E6	373.4E6	653.945	687.281
9) T	2,4-D	8.338	7.860	1669.5E6	440.4E6	655.193	683.849
10) T	Pentachlo...	8.652	8.291	21433.2E6	5127.5E6	662.115	696.564
11) T	2,4,5-TP ...	9.203	8.652	8331.6E6	2040.9E6	671.311	703.301
12) T	2,4,5-T	9.485	9.029	8194.4E6	2061.5E6	682.246	712.081
13) T	2,4-DB	10.035	9.536	1774.9E6	271.0E6	697.005	702.531
14) T	DINOSEB	11.199	9.865	5878.9E6	1447.2E6	735.826	792.472
15) T	Picloram	11.013	10.842	10905.6E6	2850.8E6	658.279	686.473
16) T	DCPA	11.467	10.797	11753.3E6	3111.1E6	697.027	721.670

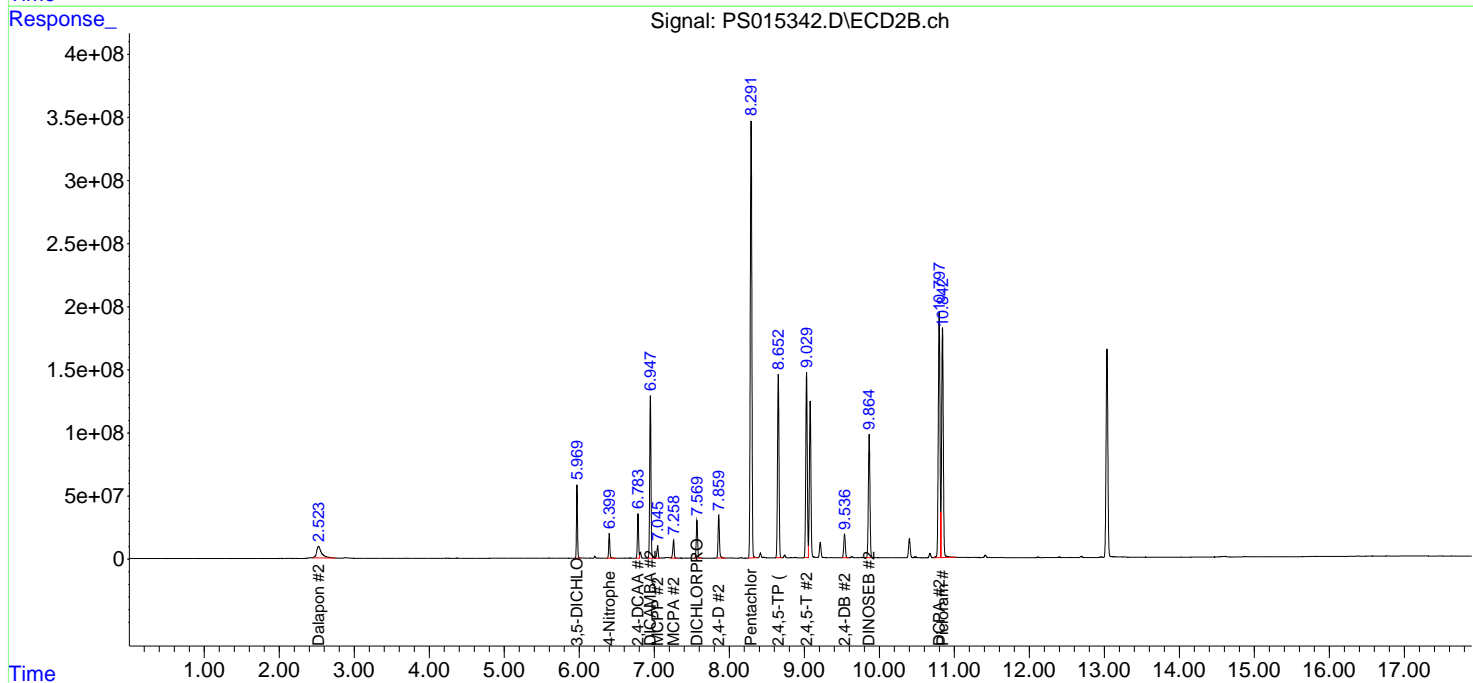
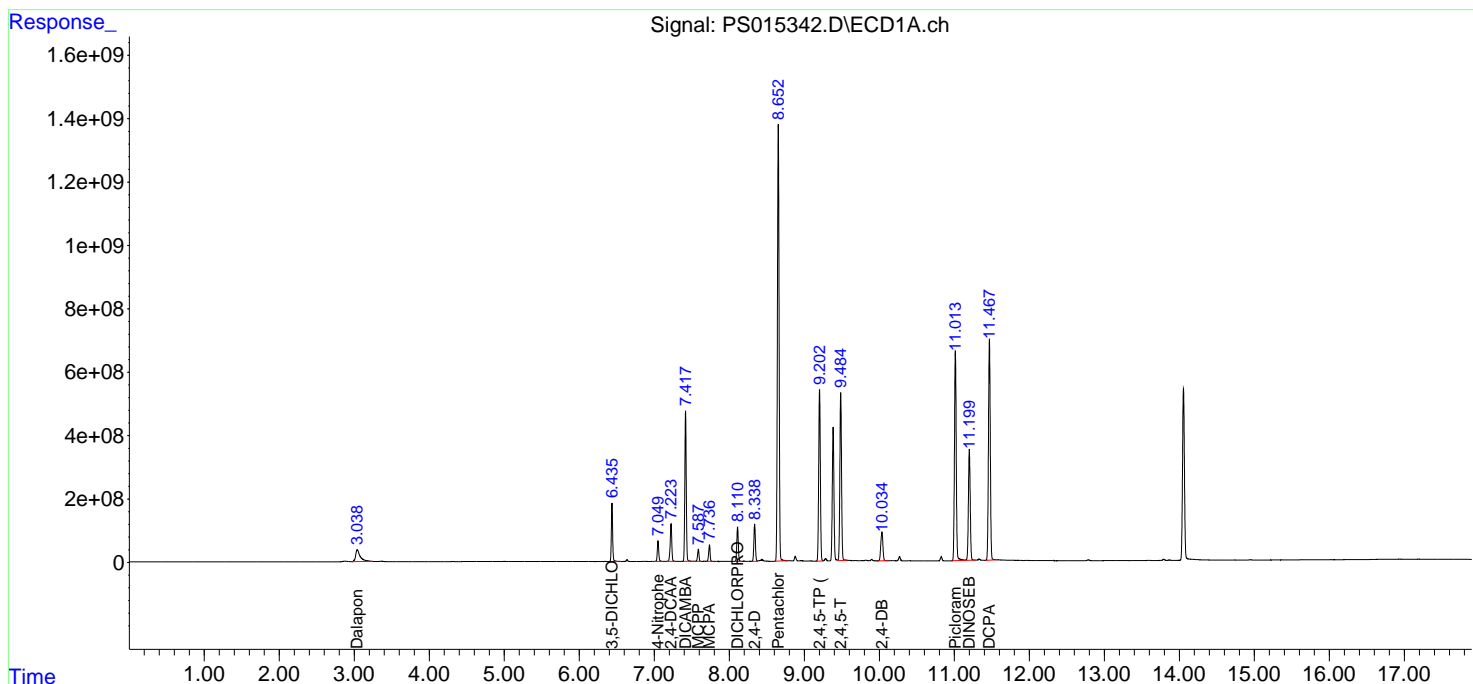
(f)=RT Delta > 1/2 Window (#)=Amounts differ by > 25% (m)=manual int.

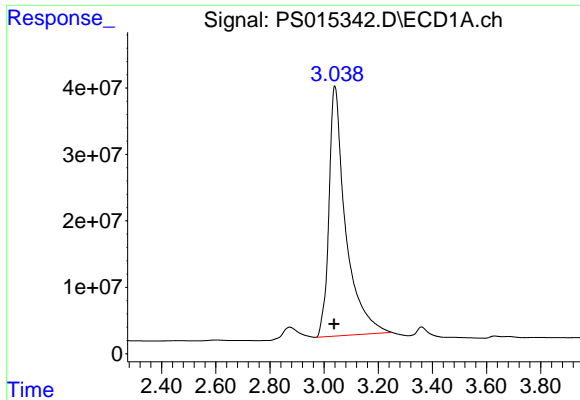
Data Path : Z:\pestpcbsrv\HPCHEM1\ECD_S\Data\PS060921\
 Data File : PS015342.D
 Signal(s) : Signal #1: ECD1A.ch Signal #2: ECD2B.ch
 Acq On : 10 Jun 2021 00:00
 Operator : DD\AJ
 Sample : HSTDCCC750
 Misc :
 ALS Vial : 3 Sample Multiplier: 1

Instrument :
 ECD_S
 ClientSampled :

Integration File signal 1: autoint1.e
 Integration File signal 2: autoint2.e
 Quant Time: Jun 10 01:31:53 2021
 Quant Method : Z:\pestpcbsrv\HPCHEM1\ECD_S\Method\PS052821.M
 Quant Title : 8080.M
 QLast Update : Fri May 28 14:34:22 2021
 Response via : Initial Calibration
 Integrator: ChemStation

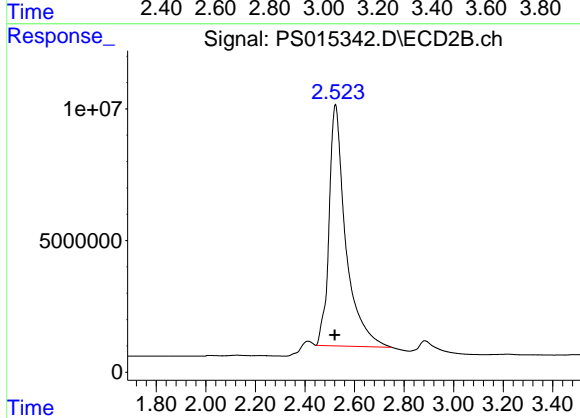
Volume Inj. : 2 µl
 Signal #1 Phase : Rtx-CLPesticides Signal #2 Phase: Rtx-CLPesticides2
 Signal #1 Info : 30M x 0.32mm x0.5 Signal #2 Info : 30M x 0.32mm x 0.25µm



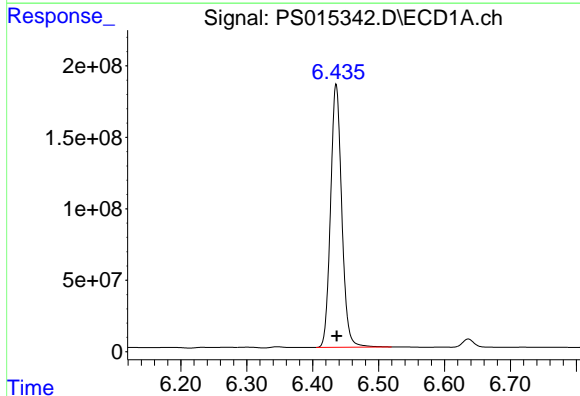


#1 Dalapon
 R.T.: 3.039 min
 Delta R.T.: 0.002 min
 Response: 1612844449
 Conc: 613.63 ng/ml

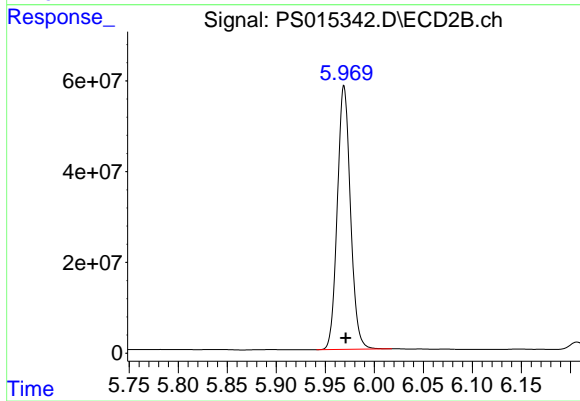
Instrument :
 ECD_S
 ClientSampled :



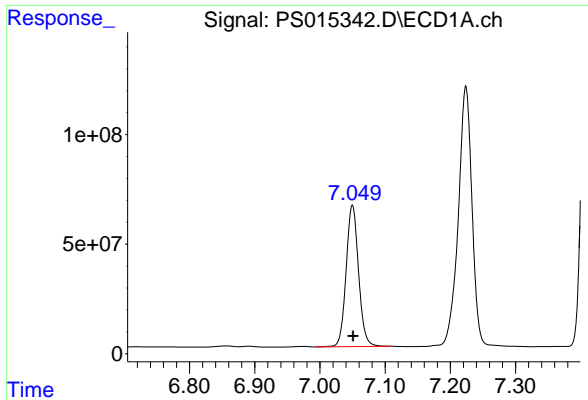
#1 Dalapon
 R.T.: 2.523 min
 Delta R.T.: 0.003 min
 Response: 427480440
 Conc: 653.19 ng/ml



#2 3,5-DICHLOROBENZOIC ACID
 R.T.: 6.436 min
 Delta R.T.: 0.000 min
 Response: 2171837195
 Conc: 629.81 ng/ml

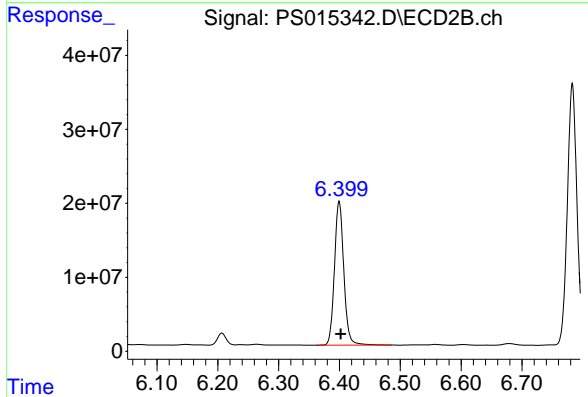


#2 3,5-DICHLOROBENZOIC ACID
 R.T.: 5.969 min
 Delta R.T.: -0.002 min
 Response: 542293138
 Conc: 671.28 ng/ml

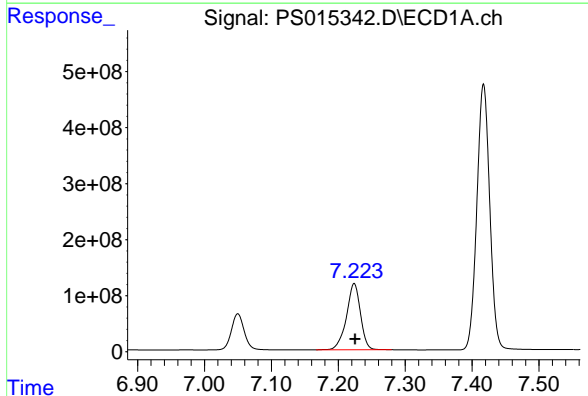


#3 4-Nitrophenol
R.T.: 7.050 min
Delta R.T.: -0.001 min
Response: 853936450
Conc: 605.76 ng/ml

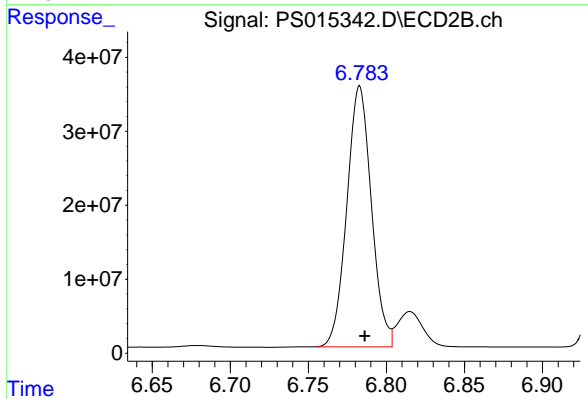
Instrument :
ECD_S
ClientSampled :



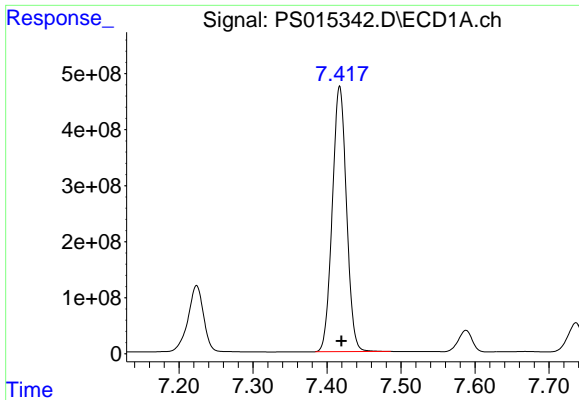
#3 4-Nitrophenol
R.T.: 6.399 min
Delta R.T.: -0.003 min
Response: 207339158
Conc: 651.65 ng/ml



#4 2,4-DCAA
R.T.: 7.224 min
Delta R.T.: -0.001 min
Response: 1727004843
Conc: 685.22 ng/ml

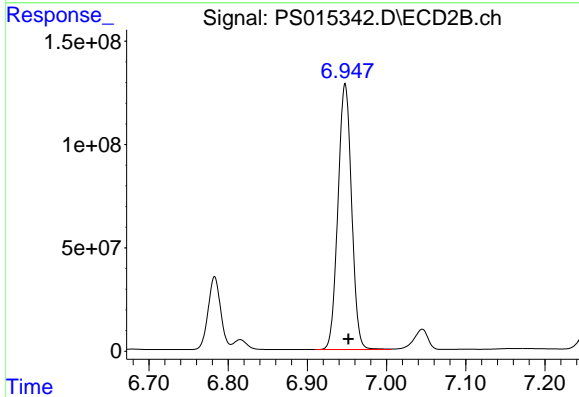


#4 2,4-DCAA
R.T.: 6.783 min
Delta R.T.: -0.003 min
Response: 386589450
Conc: 721.56 ng/ml

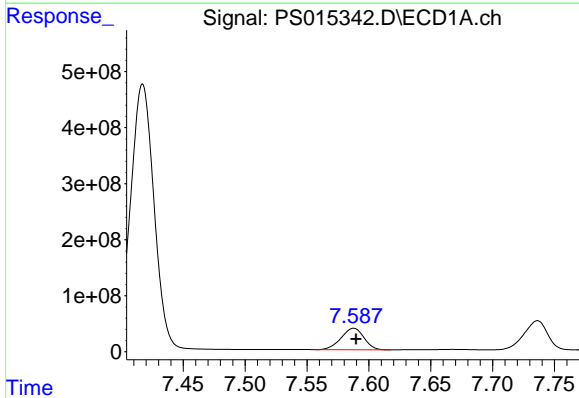


#5 DICAMBA
 R.T.: 7.417 min
 Delta R.T.: -0.002 min
 Response: 6325847637
 Conc: 663.66 ng/ml

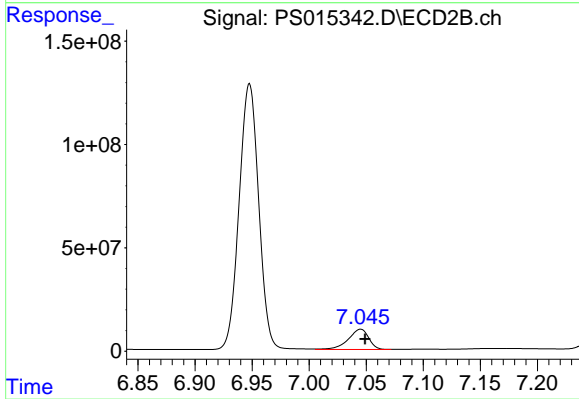
Instrument :
 ECD_S
 ClientSampled :



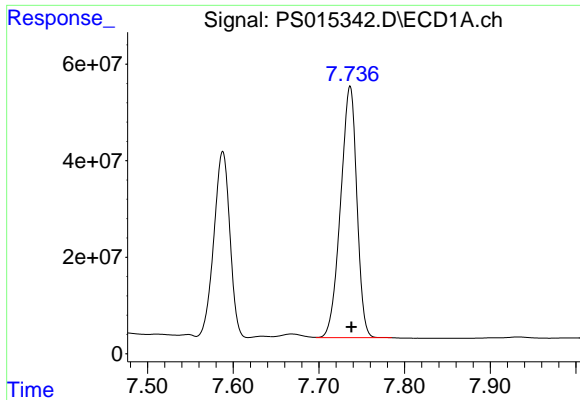
#5 DICAMBA
 R.T.: 6.948 min
 Delta R.T.: -0.004 min
 Response: 1537876021
 Conc: 694.95 ng/ml



#6 MCP
 R.T.: 7.588 min
 Delta R.T.: -0.002 min
 Response: 495209476
 Conc: 68.81 ug/ml

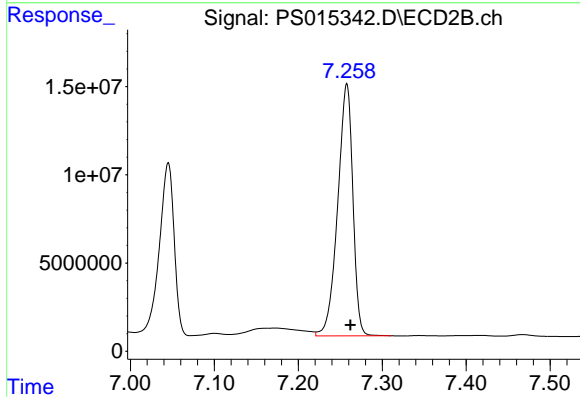


#6 MCP
 R.T.: 7.045 min
 Delta R.T.: -0.004 min
 Response: 122911128
 Conc: 69.55 ug/ml

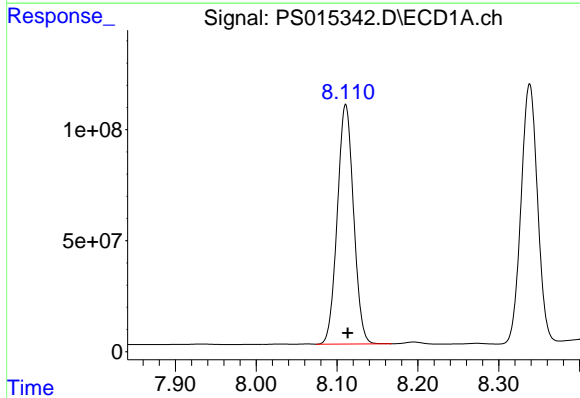


#7 MCPA
 R.T.: 7.736 min
 Delta R.T.: -0.002 min
 Response: 687898272
 Conc: 68.54 ug/ml

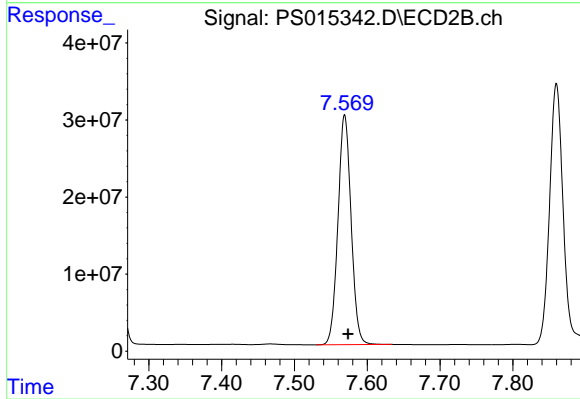
Instrument :
 ECD_S
 ClientSampleId :



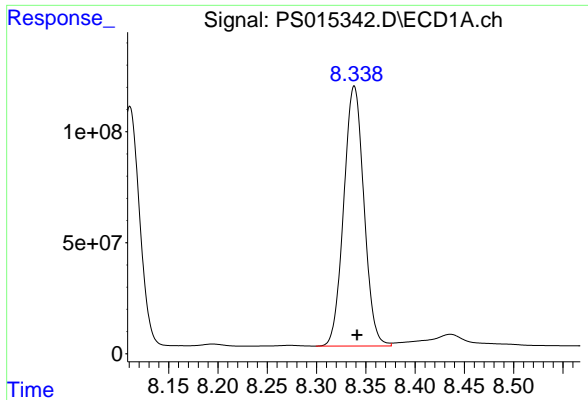
#7 MCPA
 R.T.: 7.258 min
 Delta R.T.: -0.004 min
 Response: 179505830
 Conc: 69.07 ug/ml



#8 DICHLORPROP
 R.T.: 8.111 min
 Delta R.T.: -0.003 min
 Response: 1506101393
 Conc: 653.94 ng/ml



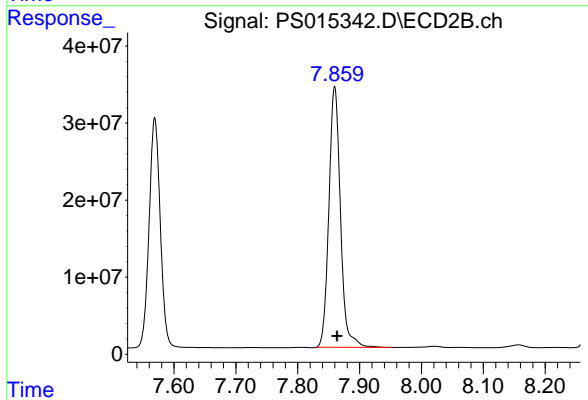
#8 DICHLORPROP
 R.T.: 7.569 min
 Delta R.T.: -0.005 min
 Response: 373374693
 Conc: 687.28 ng/ml



#9 2,4-D

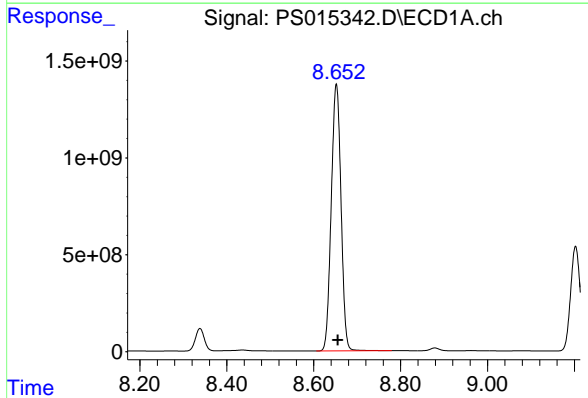
R.T.: 8.338 min
Delta R.T.: -0.003 min
Response: 1669508163
Conc: 655.19 ng/ml

Instrument :
ECD_S
ClientSampleId :



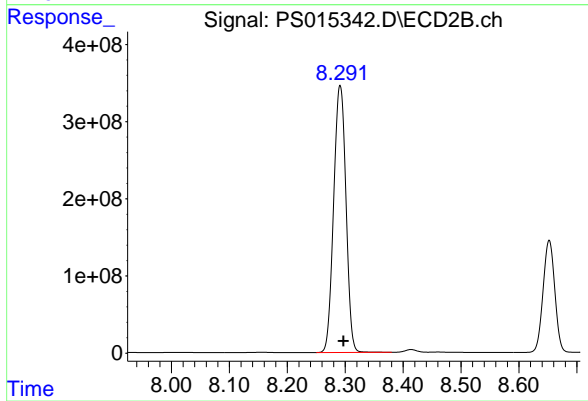
#9 2,4-D

R.T.: 7.860 min
Delta R.T.: -0.004 min
Response: 440415952
Conc: 683.85 ng/ml



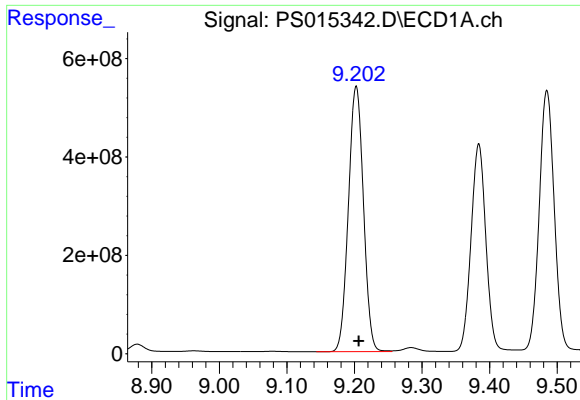
#10 Pentachlorophenol

R.T.: 8.652 min
Delta R.T.: -0.003 min
Response: 21433196062
Conc: 662.12 ng/ml



#10 Pentachlorophenol

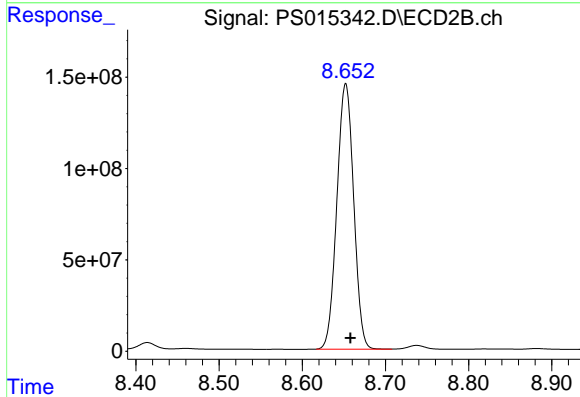
R.T.: 8.291 min
Delta R.T.: -0.006 min
Response: 5127546470
Conc: 696.56 ng/ml



#11 2,4,5-TP (SILVEX)

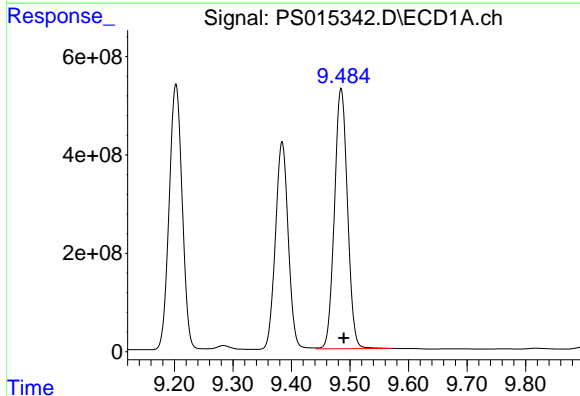
R.T.: 9.203 min
 Delta R.T.: -0.004 min
 Response: 8331640990
 Conc: 671.31 ng/ml

Instrument :
 ECD_S
 ClientSampleId :



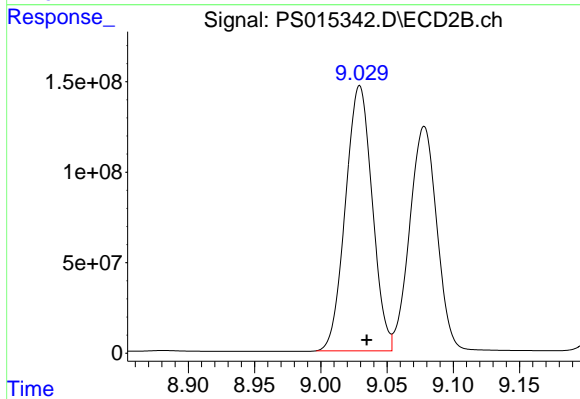
#11 2,4,5-TP (SILVEX)

R.T.: 8.652 min
 Delta R.T.: -0.006 min
 Response: 2040935048
 Conc: 703.30 ng/ml



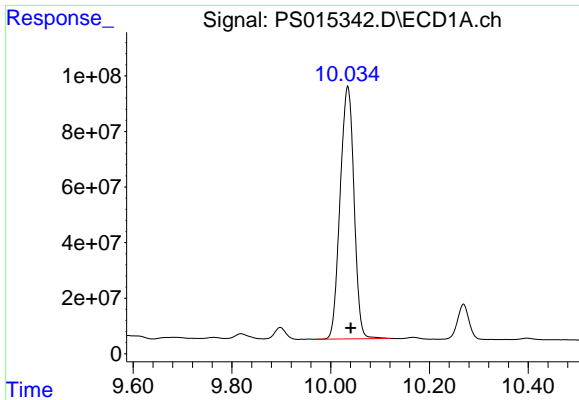
#12 2,4,5-T

R.T.: 9.485 min
 Delta R.T.: -0.004 min
 Response: 8194388789
 Conc: 682.25 ng/ml



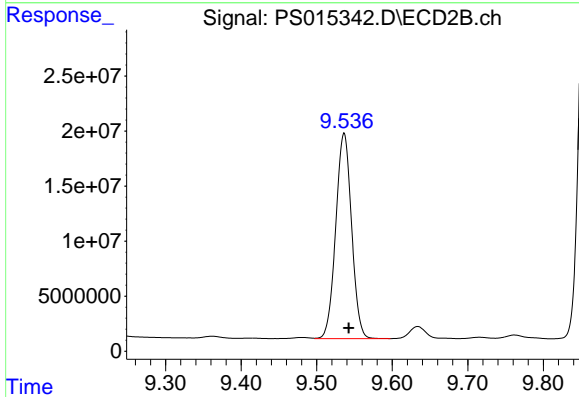
#12 2,4,5-T

R.T.: 9.029 min
 Delta R.T.: -0.005 min
 Response: 2061476360
 Conc: 712.08 ng/ml

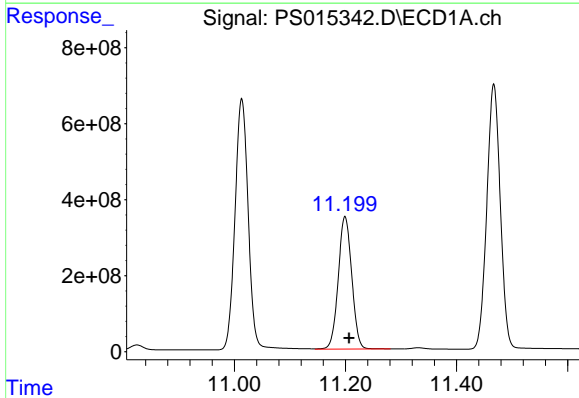


#13 2,4-DB
 R.T.: 10.035 min
 Delta R.T.: -0.006 min
 Response: 1774941015
 Conc: 697.00 ng/ml

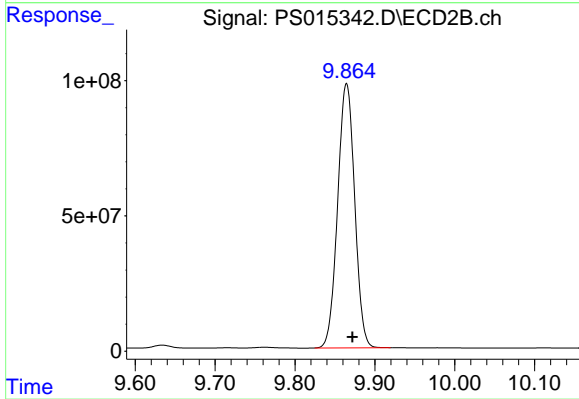
Instrument :
 ECD_S
 ClientSampleId :



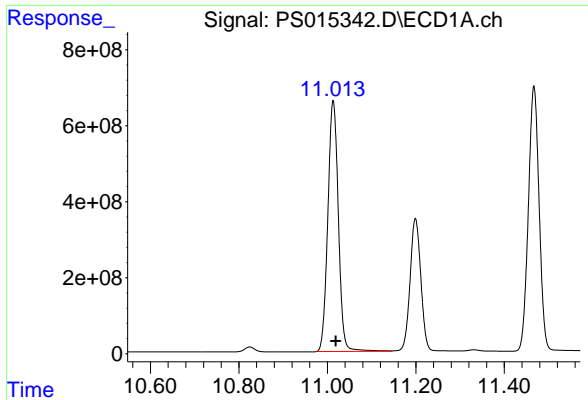
#13 2,4-DB
 R.T.: 9.536 min
 Delta R.T.: -0.006 min
 Response: 271000960
 Conc: 702.53 ng/ml



#14 DINOSEB
 R.T.: 11.199 min
 Delta R.T.: -0.007 min
 Response: 5878935996
 Conc: 735.83 ng/ml



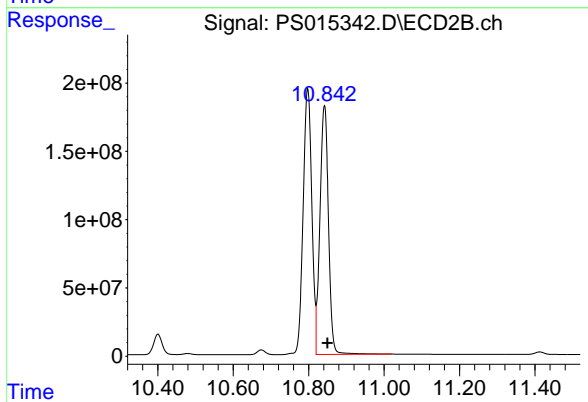
#14 DINOSEB
 R.T.: 9.865 min
 Delta R.T.: -0.008 min
 Response: 1447166402
 Conc: 792.47 ng/ml



#15 Picloram

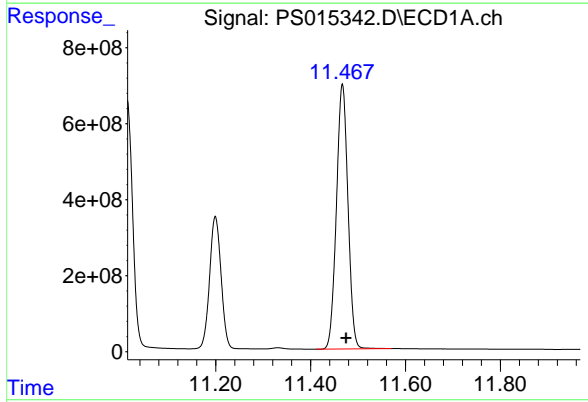
R.T.: 11.013 min
 Delta R.T.: -0.006 min
 Response: 10905561811
 Conc: 658.28 ng/ml

Instrument :
 ECD_S
 ClientSampled :



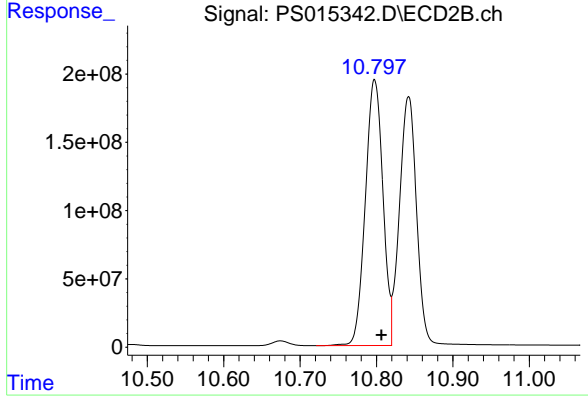
#15 Picloram

R.T.: 10.842 min
 Delta R.T.: -0.008 min
 Response: 2850847943
 Conc: 686.47 ng/ml



#16 DCPA

R.T.: 11.467 min
 Delta R.T.: -0.008 min
 Response: 11753323425
 Conc: 697.03 ng/ml



#16 DCPA

R.T.: 10.797 min
 Delta R.T.: -0.009 min
 Response: 3111117636
 Conc: 721.67 ng/ml