

Data Path : Z:\pestpcbsrv\HPCHEM1\ECD_S\Data\PS061025\
 Data File : PS030593.D
 Signal(s) : Signal #1: ECD1A.ch Signal #2: ECD2B.ch
 Acq On : 10 Jun 2025 12:03
 Operator : AR\AJ
 Sample : I.BLK
 Misc :
 ALS Vial : 2 Sample Multiplier: 1

Instrument :
 ECD_S
 ClientSampleId :

Integration File signal 1: autoint1.e
 Integration File signal 2: autoint2.e
 Quant Time: Jun 11 01:35:54 2025
 Quant Method : Z:\pestpcbsrv\HPCHEM1\ECD_S\Method\PS060425.M
 Quant Title : 8080.M
 QLast Update : Wed Jun 04 13:21:22 2025
 Response via : Initial Calibration
 Integrator: ChemStation

Volume Inj. : 1 µl
 Signal #1 Phase : ZB-MR2 Signal #2 Phase: ZB-MR2
 Signal #1 Info : 30M x 0.32mm x0.5 Signal #2 Info : 30M x 0.32mm x 0.25µm

Compound	RT#1	RT#2	Resp#1	Resp#2	ng/ml	ng/ml

System Monitoring Compounds						
4) S 2,4-DCAA	7.360	7.768	1731.7E6	510.7E6	458.719	474.837
Target Compounds						
1) T Dalapon	0.000	2.673f	0	61683700	N.D.	22.512
2) T 3,5-DICHL...	6.512	0.000	2059995	0	<MDL	N.D. #
3) T 4-Nitroph...	7.148	0.000	14367645	0	7.835	N.D. #
5) T DICAMBA	7.542	7.973	4223237	14859697	<MDL	2.307 #
7) T MCPA	7.913	0.000	742470	0	<MDL	N.D. #
8) T DICHLORPROP	8.278	8.684	901557	3398115	<MDL	2.290 #
9) T 2,4-D	8.478f	8.988f	809677	2214244	<MDL	1.408 #
10) T Pentachlo...	8.839	0.000	368797	0	<MDL	N.D. #
11) T 2,4,5-TP ...	9.385	9.934	5406622	3907820	<MDL	<MDL #
12) T 2,4,5-T	9.686	10.363	1925904	2340266	<MDL	<MDL #
13) T 2,4-DB	10.268	10.955	1413236	2365878	<MDL	2.058 #
14) T DINOSEB	11.482	11.313	965209	2350920	<MDL	<MDL #
15) T Picloram	11.293	12.420	12283915	26714465	<MDL	1.210 #
16) T DCPA	11.781	12.362	4554580	3619018	<MDL	<MDL #

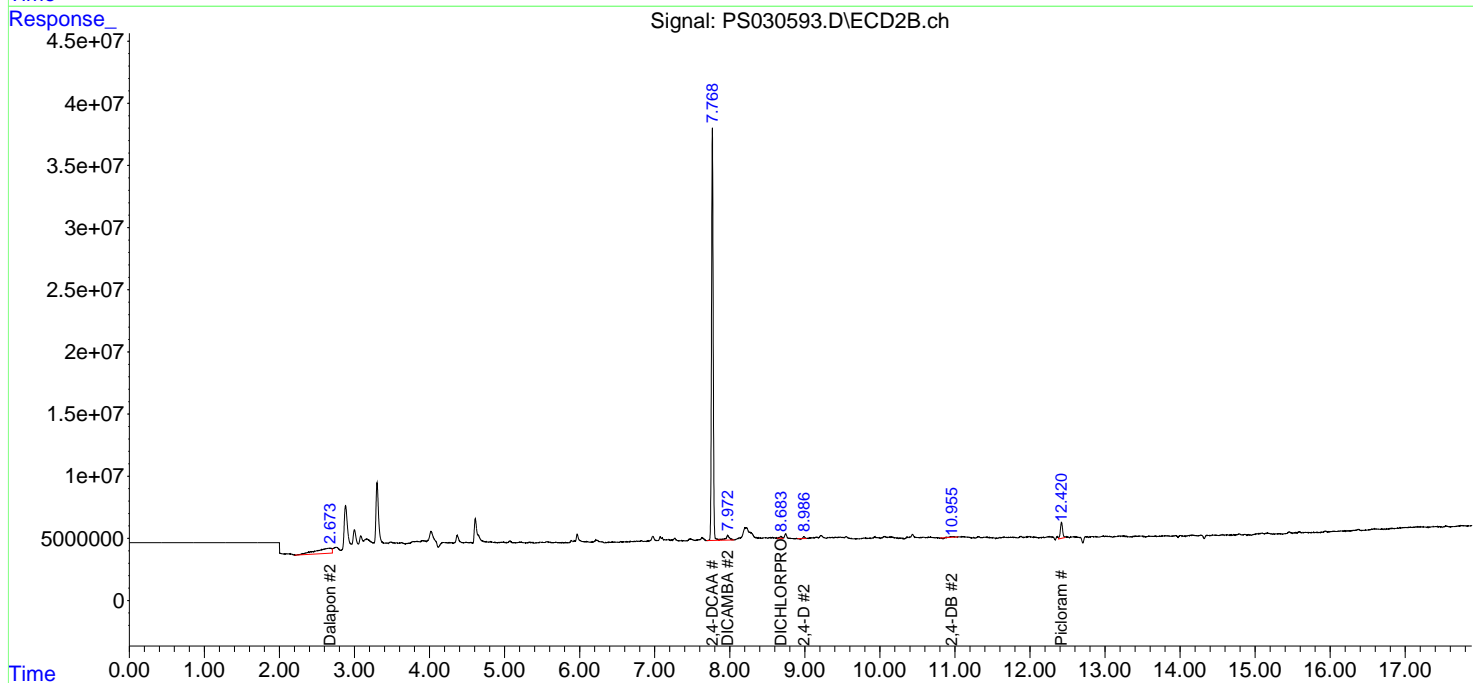
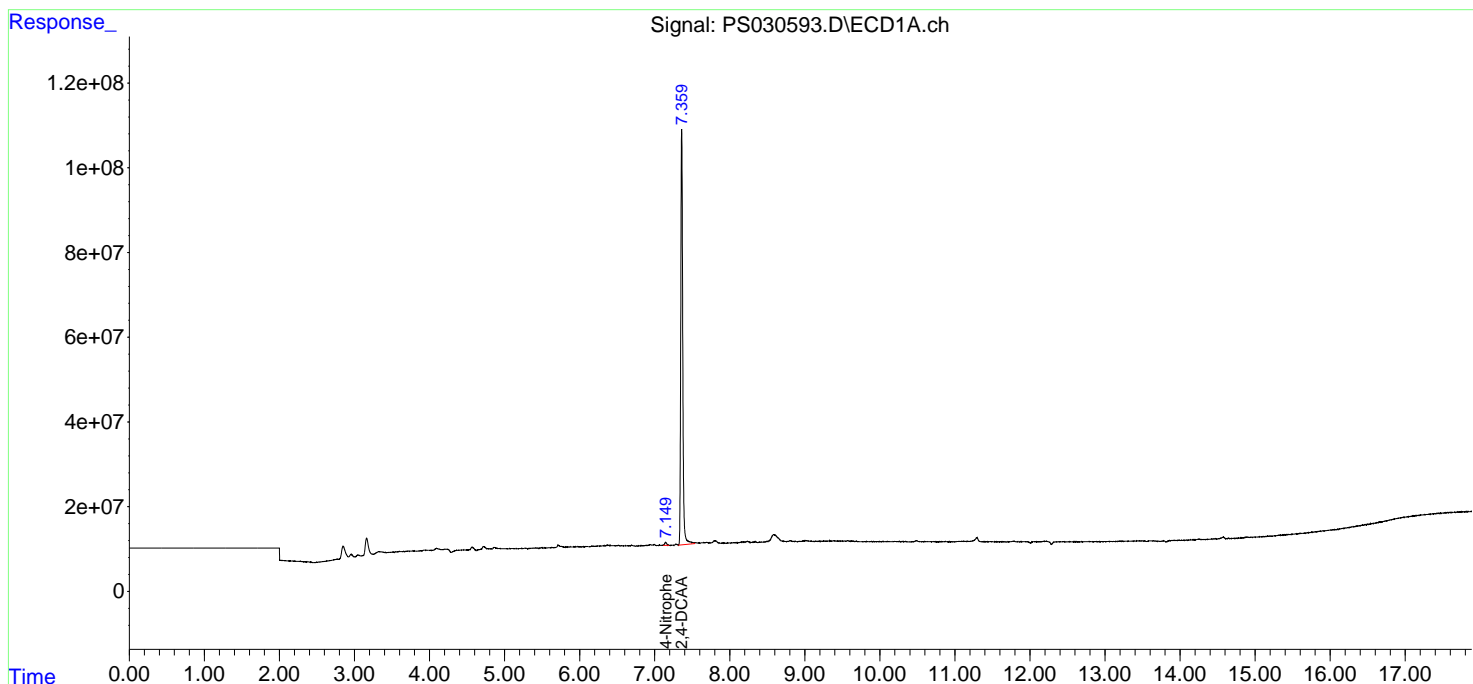
(f)=RT Delta > 1/2 Window (#)=Amounts differ by > 25% (m)=manual int.

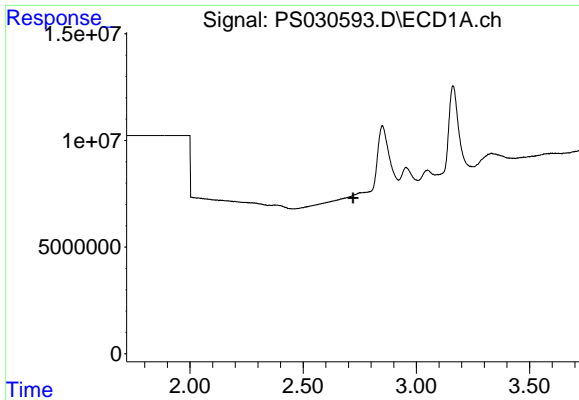
Data Path : Z:\pestpcbsrv\HPCHEM1\ECD_S\Data\PS061025\
 Data File : PS030593.D
 Signal(s) : Signal #1: ECD1A.ch Signal #2: ECD2B.ch
 Acq On : 10 Jun 2025 12:03
 Operator : AR\AJ
 Sample : I.BLK
 Misc :
 ALS Vial : 2 Sample Multiplier: 1

Instrument :
 ECD_S
 ClientSampleId :

Integration File signal 1: autoint1.e
 Integration File signal 2: autoint2.e
 Quant Time: Jun 11 01:35:54 2025
 Quant Method : Z:\pestpcbsrv\HPCHEM1\ECD_S\Method\PS060425.M
 Quant Title : 8080.M
 QLast Update : Wed Jun 04 13:21:22 2025
 Response via : Initial Calibration
 Integrator: ChemStation

Volume Inj. : 1 µl
 Signal #1 Phase : ZB-MR1 Signal #2 Phase: ZB-MR2
 Signal #1 Info : 30M x 0.32mm x0.5 Signal #2 Info : 30M x 0.32mm x 0.25µm

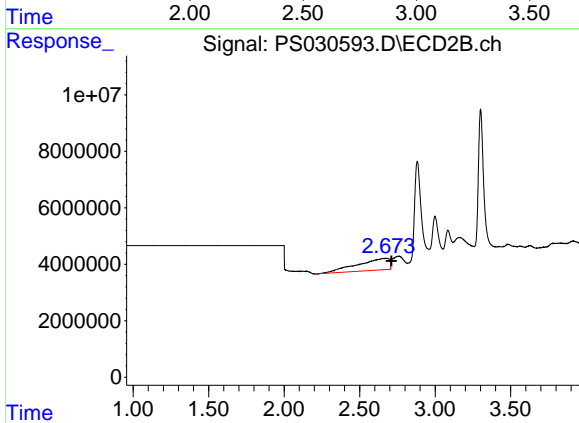




#1 Dalapon

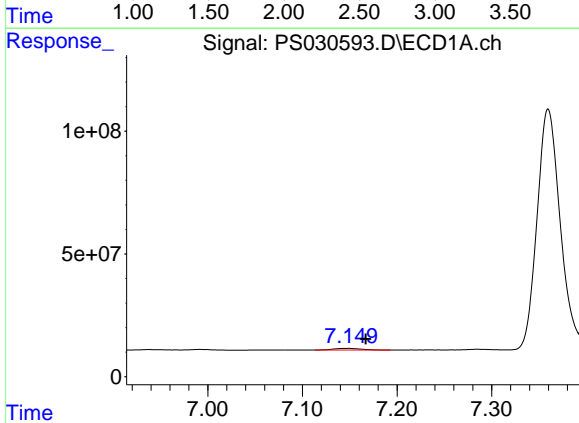
R.T.: 0.000 min
 Exp R.T.: 2.720 min
 Response: 0
 Conc: N.D.

Instrument :
 ECD_S
 ClientSampleId :



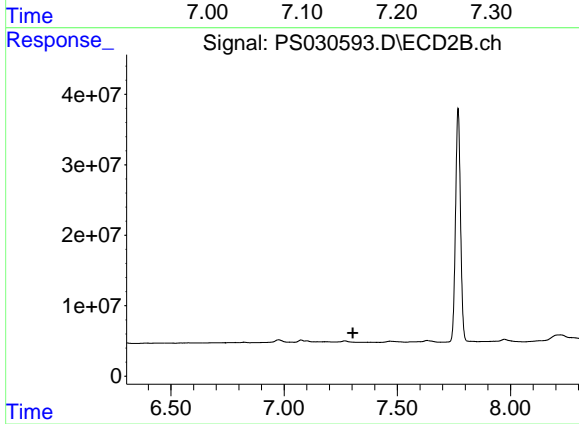
#1 Dalapon

R.T.: 2.673 min
 Delta R.T.: -0.038 min
 Response: 61683700
 Conc: 22.51 ng/ml



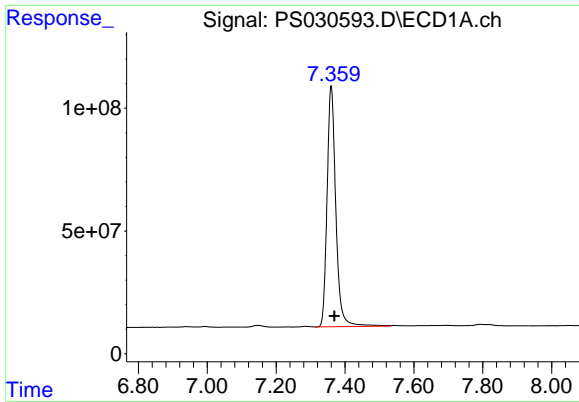
#3 4-Nitrophenol

R.T.: 7.148 min
 Delta R.T.: -0.018 min
 Response: 14367645
 Conc: 7.84 ng/ml



#3 4-Nitrophenol

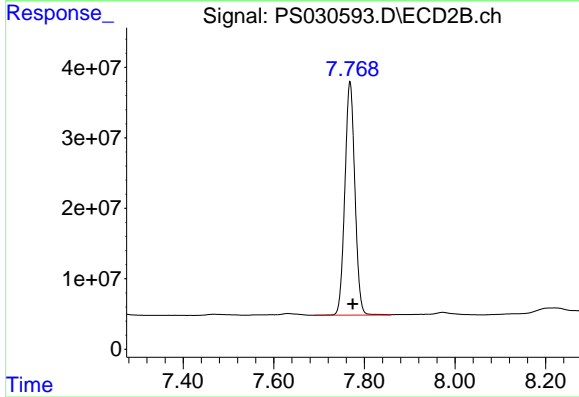
R.T.: 0.000 min
 Exp R.T.: 7.304 min
 Response: 0
 Conc: N.D.



#4 2,4-DCAA

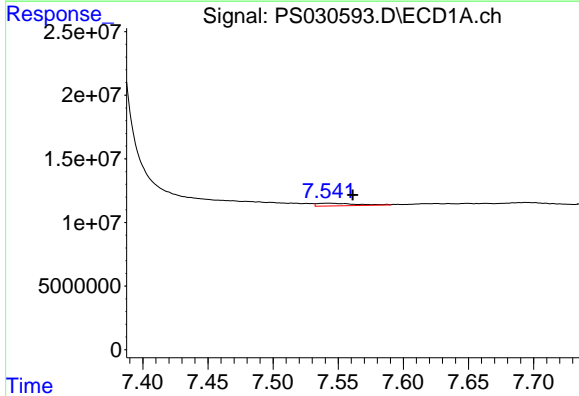
R.T.: 7.360 min
 Delta R.T.: -0.009 min
 Response: 1731731529
 Conc: 458.72 ng/ml

Instrument :
 ECD_S
 ClientSampleId :



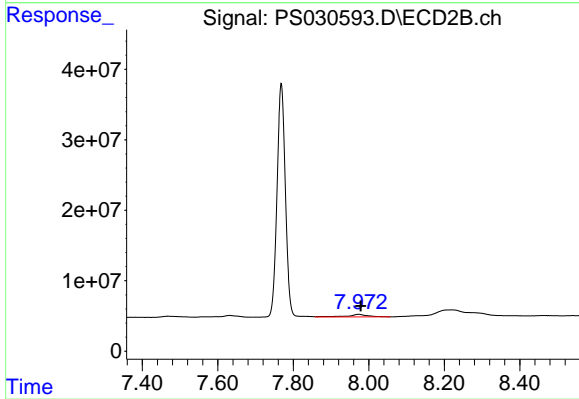
#4 2,4-DCAA

R.T.: 7.768 min
 Delta R.T.: -0.006 min
 Response: 510739465
 Conc: 474.84 ng/ml



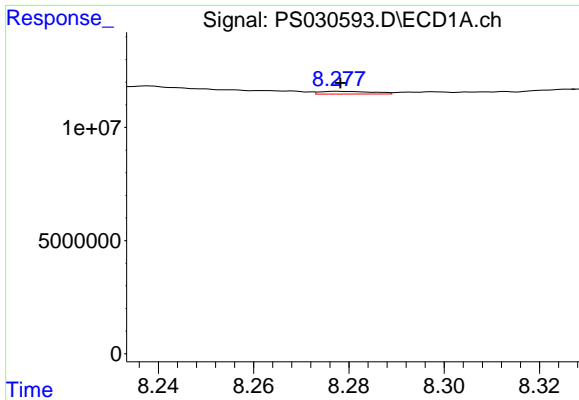
#5 DICAMBA

R.T.: 7.542 min
 Delta R.T.: -0.019 min
 Response: 4223237
 Conc: N.D.



#5 DICAMBA

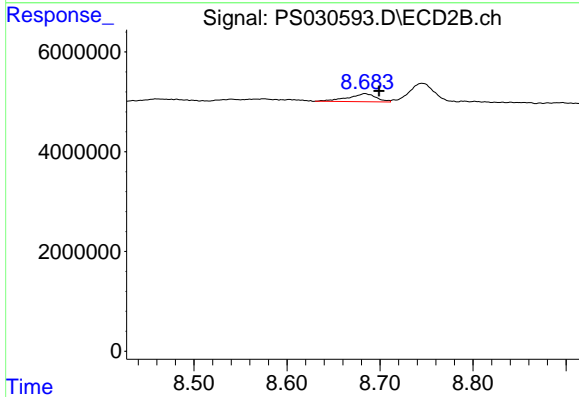
R.T.: 7.973 min
 Delta R.T.: -0.006 min
 Response: 14859697
 Conc: 2.31 ng/ml



#8 DICHLORPROP

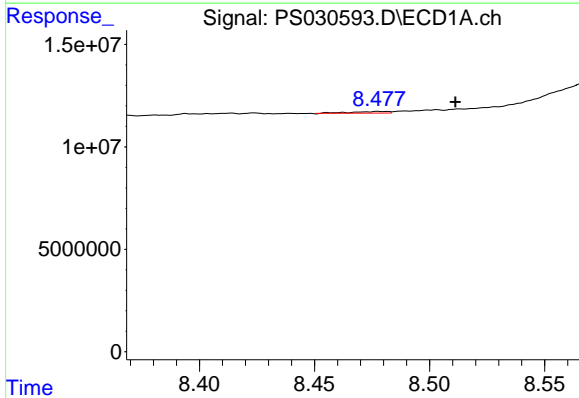
R.T.: 8.278 min
 Delta R.T.: 0.000 min
 Response: 901557
 Conc: N.D.

Instrument :
 ECD_S
 ClientSampleId :



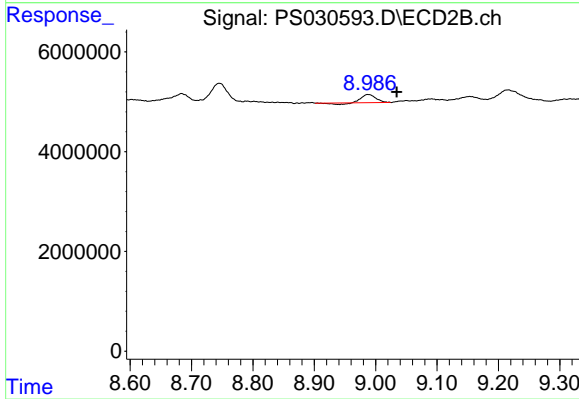
#8 DICHLORPROP

R.T.: 8.684 min
 Delta R.T.: -0.015 min
 Response: 3398115
 Conc: 2.29 ng/ml



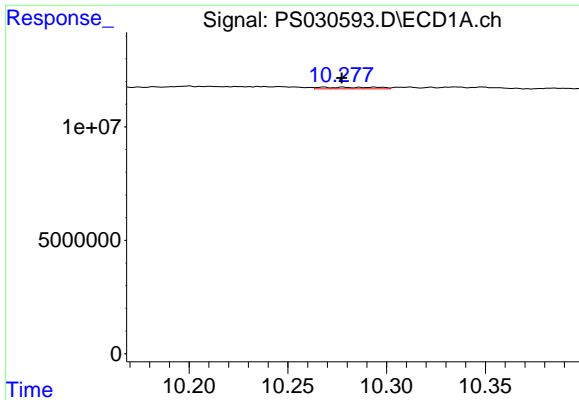
#9 2,4-D

R.T.: 8.478 min
 Delta R.T.: -0.033 min
 Response: 809677
 Conc: N.D.



#9 2,4-D

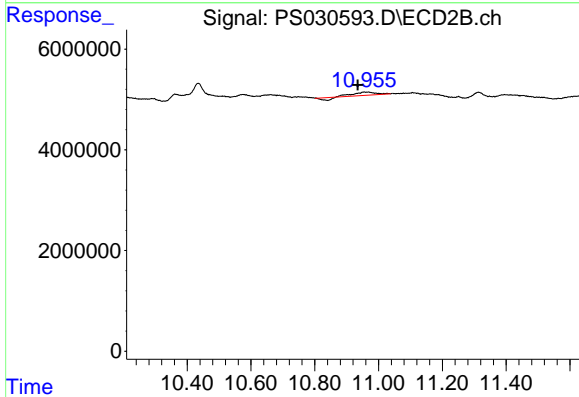
R.T.: 8.988 min
 Delta R.T.: -0.046 min
 Response: 2214244
 Conc: 1.41 ng/ml



#13 2,4-DB

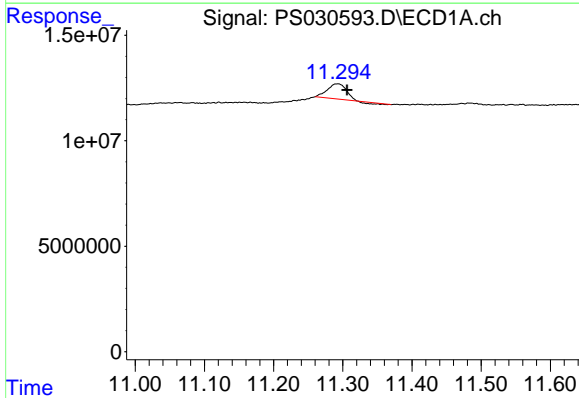
R.T.: 10.268 min
 Delta R.T.: -0.009 min
 Response: 1413236
 Conc: N.D.

Instrument :
 ECD_S
 ClientSampleId :



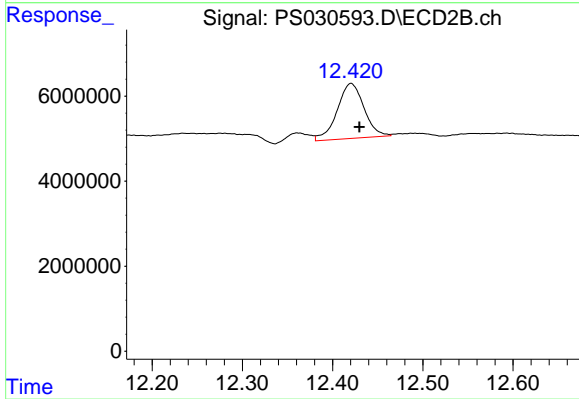
#13 2,4-DB

R.T.: 10.955 min
 Delta R.T.: 0.020 min
 Response: 2365878
 Conc: 2.06 ng/ml



#15 Picloram

R.T.: 11.293 min
 Delta R.T.: -0.013 min
 Response: 12283915
 Conc: N.D.



#15 Picloram

R.T.: 12.420 min
 Delta R.T.: -0.009 min
 Response: 26714465
 Conc: 1.21 ng/ml