

Data Path : Z:\pestpcbsrv\HPCHEM1\ECD_S\Data\PS061025\
 Data File : PS030594.D
 Signal(s) : Signal #1: ECD1A.ch Signal #2: ECD2B.ch
 Acq On : 10 Jun 2025 12:27
 Operator : AR\AJ
 Sample : HSTDCCC750
 Misc :
 ALS Vial : 3 Sample Multiplier: 1

Instrument :
 ECD_S
 ClientSampleId :
 HSTDCCC750

Integration File signal 1: autoint1.e
 Integration File signal 2: autoint2.e
 Quant Time: Jun 11 01:36:05 2025
 Quant Method : Z:\pestpcbsrv\HPCHEM1\ECD_S\Method\PS060425.M
 Quant Title : 8080.M
 QLast Update : Wed Jun 04 13:21:22 2025
 Response via : Initial Calibration
 Integrator: ChemStation

Volume Inj. : 1 µl
 Signal #1 Phase : ZB-MR2 Signal #2 Phase: ZB-MR2
 Signal #1 Info : 30M x 0.32mm x0.5 Signal #2 Info : 30M x 0.32mm x 0.25µm

Compound	RT#1	RT#2	Resp#1	Resp#2	ng/ml	ng/ml

System Monitoring Compounds						
4) S 2,4-DCAA	7.360	7.769	2842.3E6	803.2E6	752.896	746.713
Target Compounds						
1) T Dalapon	2.712	2.712	4007.5E6	1866.1E6	709.680	681.040
2) T 3,5-DICHL...	6.517	6.714	3921.8E6	1113.1E6	722.741	711.563
3) T 4-Nitroph...	7.159	7.299	1220.4E6	1154.0E6	665.521	736.293
5) T DICAMBA	7.551	7.972	11434.4E6	4704.4E6	741.410	730.308
6) T MCPP	7.734	8.071	586.7E6	167.4E6	59.236	72.398
7) T MCPA	7.884	8.320	888.8E6	201.3E6	70.039	65.246
8) T DICHLORPROP	8.266	8.692	2594.9E6	1053.9E6	713.241	710.109
9) T 2,4-D	8.499	9.027	2527.0E6	1129.6E6	693.548	718.453
10) T Pentachlo...	8.808	9.554	39870.9E6	27281.3E6	785.074	754.921
11) T 2,4,5-TP ...	9.389	9.935	15274.8E6	10094.7E6	739.161	735.943
12) T 2,4,5-T	9.683	10.360	13035.8E6	9528.0E6	707.274	729.717
13) T 2,4-DB	10.263	10.928	1980.9E6	813.2E6	652.376	707.417
14) T DINOSEB	11.485	11.313	10590.7E6	7450.4E6	736.748	741.325
15) T Picloram	11.291	12.421	11282.9E6	15653.7E6	564.009	708.831 #
16) T DCPA	11.781	12.358	19987.9E6	15160.4E6	755.969	740.871

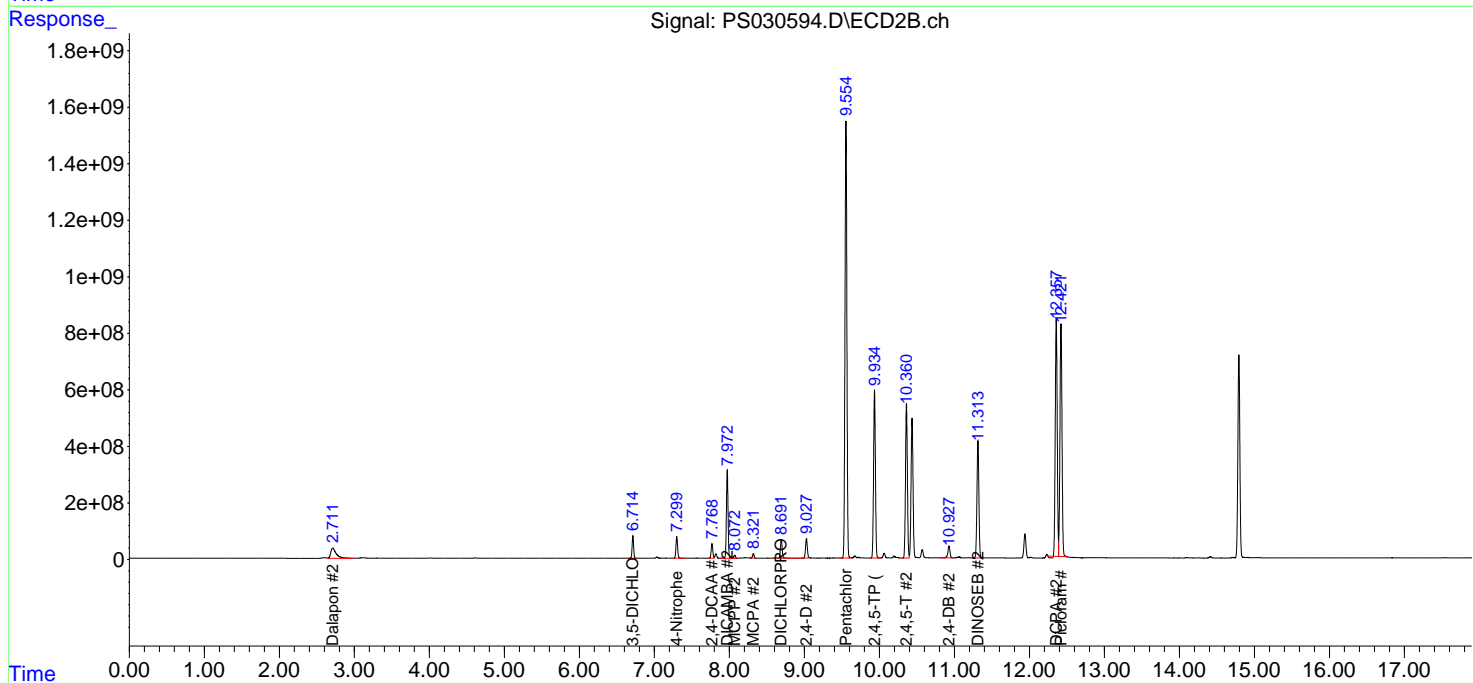
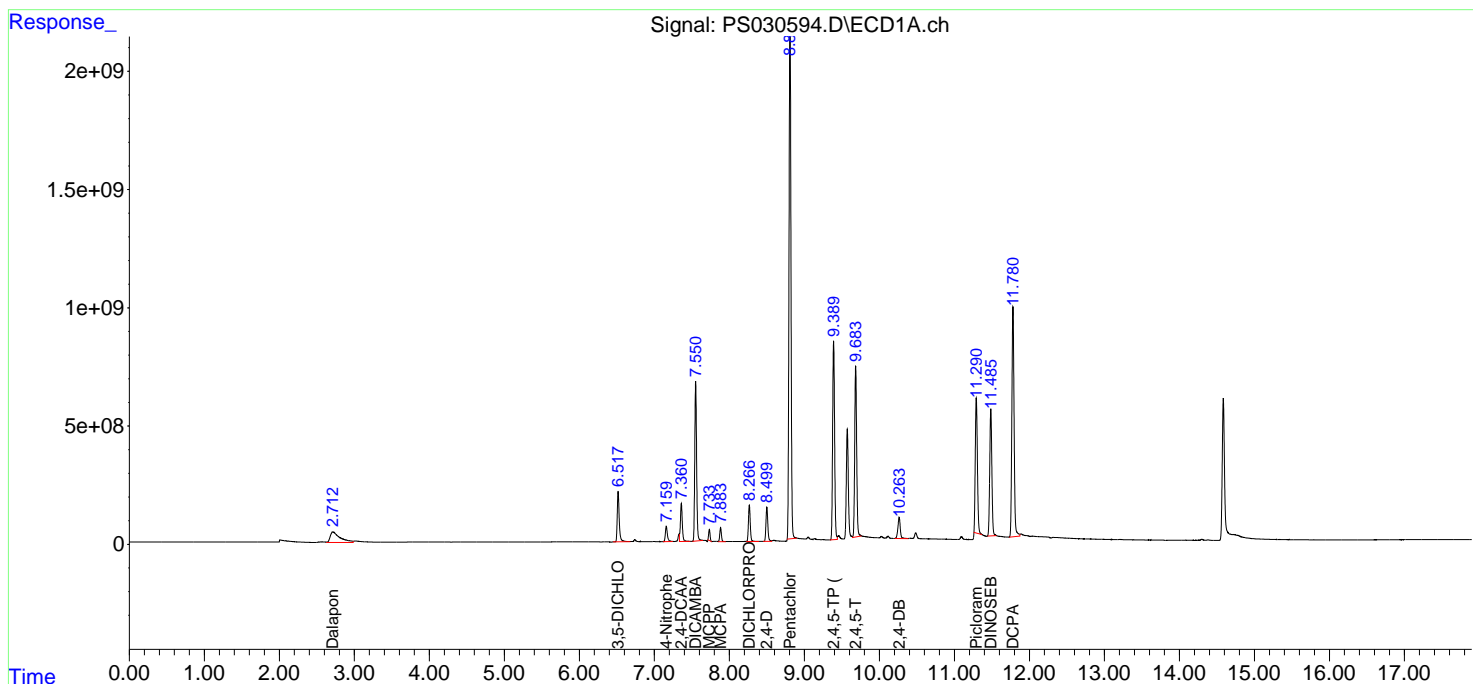
(f)=RT Delta > 1/2 Window (#)=Amounts differ by > 25% (m)=manual int.

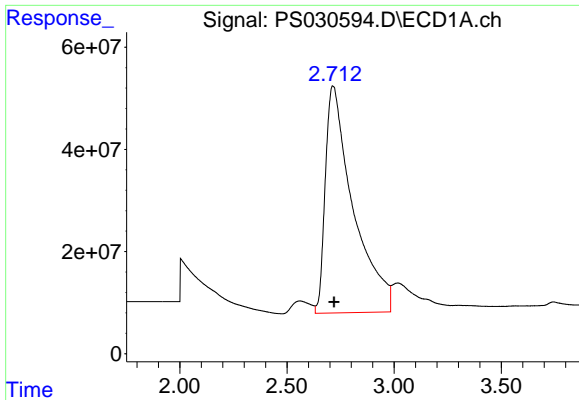
Data Path : Z:\pestpcbsrv\HPCHEM1\ECD_S\Data\PS061025\
 Data File : PS030594.D
 Signal(s) : Signal #1: ECD1A.ch Signal #2: ECD2B.ch
 Acq On : 10 Jun 2025 12:27
 Operator : AR\AJ
 Sample : HSTDCCC750
 Misc :
 ALS Vial : 3 Sample Multiplier: 1

Instrument :
 ECD_S
 ClientSampleId :
 HSTDCCC750

Integration File signal 1: autoint1.e
 Integration File signal 2: autoint2.e
 Quant Time: Jun 11 01:36:05 2025
 Quant Method : Z:\pestpcbsrv\HPCHEM1\ECD_S\Method\PS060425.M
 Quant Title : 8080.M
 QLast Update : Wed Jun 04 13:21:22 2025
 Response via : Initial Calibration
 Integrator: ChemStation

Volume Inj. : 1 µl
 Signal #1 Phase : ZB-MR1 Signal #2 Phase: ZB-MR2
 Signal #1 Info : 30M x 0.32mm x0.5 Signal #2 Info : 30M x 0.32mm x 0.25µm

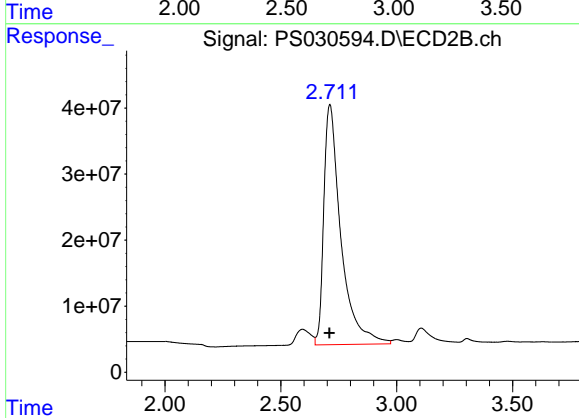




#1 Dalapon

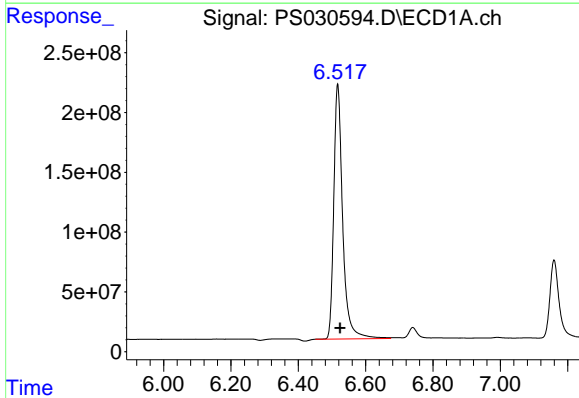
R.T.: 2.712 min
 Delta R.T.: -0.008 min
 Response: 4007544148
 Conc: 709.68 ng/ml

Instrument :
 ECD_S
 ClientSampleId :
 HSTDCCC750



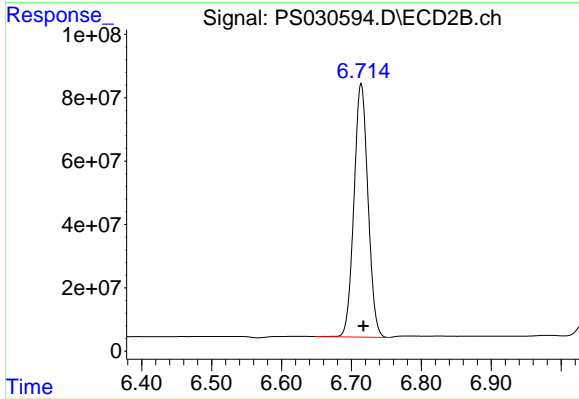
#1 Dalapon

R.T.: 2.712 min
 Delta R.T.: 0.001 min
 Response: 1866060488
 Conc: 681.04 ng/ml



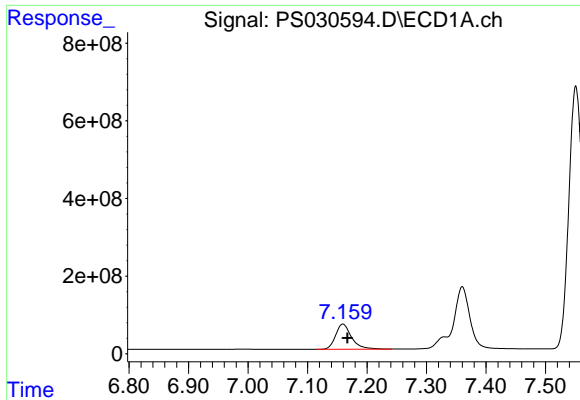
#2 3,5-DICHLOROBENZOIC ACID

R.T.: 6.517 min
 Delta R.T.: -0.007 min
 Response: 3921845683
 Conc: 722.74 ng/ml



#2 3,5-DICHLOROBENZOIC ACID

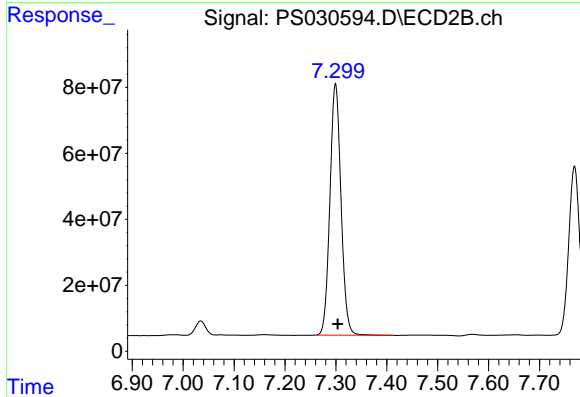
R.T.: 6.714 min
 Delta R.T.: -0.003 min
 Response: 1113060375
 Conc: 711.56 ng/ml



#3 4-Nitrophenol

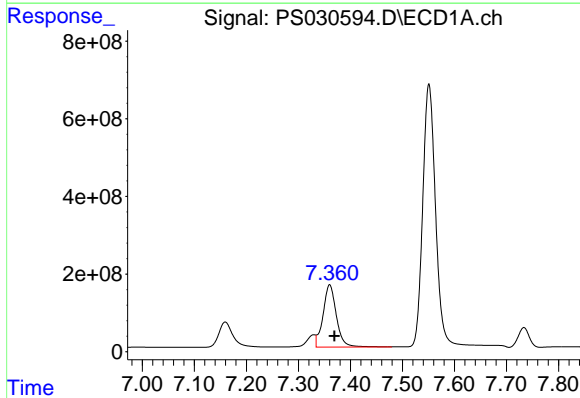
R.T.: 7.159 min
Delta R.T.: -0.008 min
Response: 1220401943
Conc: 665.52 ng/ml

Instrument :
ECD_S
ClientSampleId :
HSTDCCC750



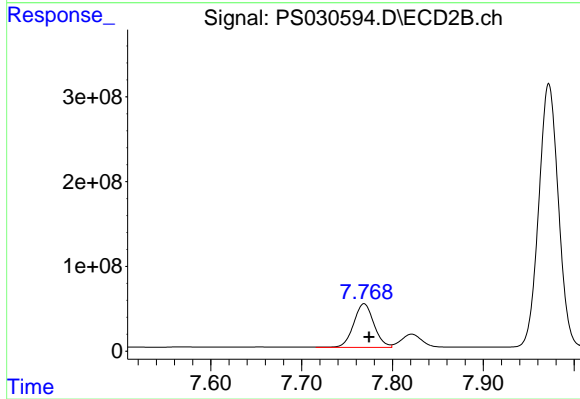
#3 4-Nitrophenol

R.T.: 7.299 min
Delta R.T.: -0.005 min
Response: 1153950405
Conc: 736.29 ng/ml



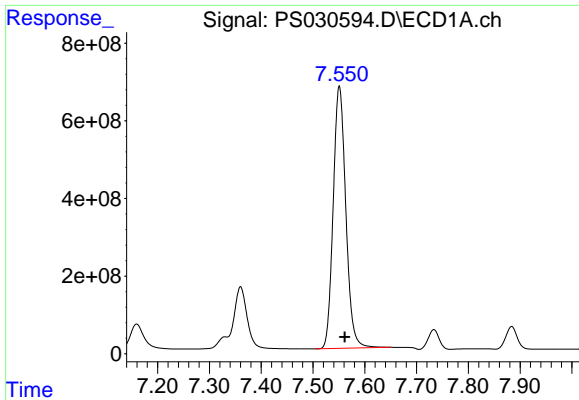
#4 2,4-DCAA

R.T.: 7.360 min
Delta R.T.: -0.009 min
Response: 2842291064
Conc: 752.90 ng/ml



#4 2,4-DCAA

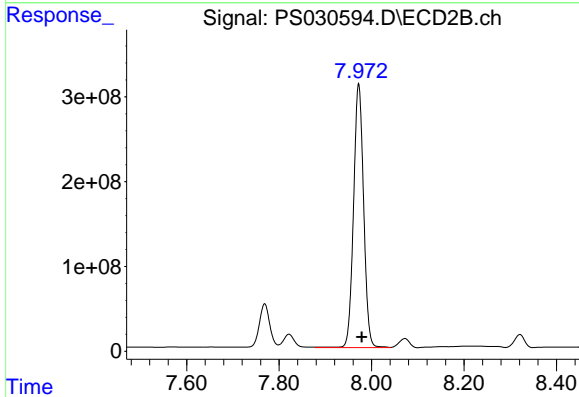
R.T.: 7.769 min
Delta R.T.: -0.006 min
Response: 803172592
Conc: 746.71 ng/ml



#5 DICAMBA

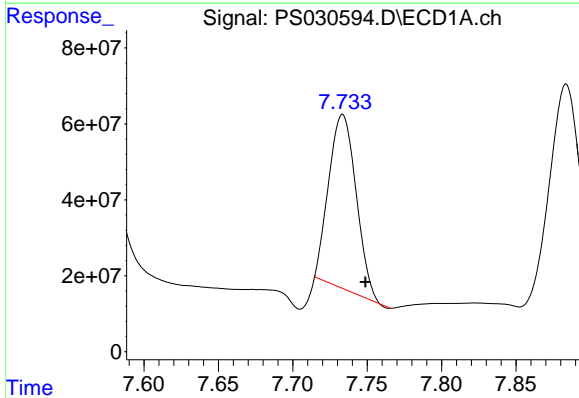
R.T.: 7.551 min
 Delta R.T.: -0.010 min
 Response: 11434416495
 Conc: 741.41 ng/ml

Instrument :
 ECD_S
 ClientSampleId :
 HSTDCCC750



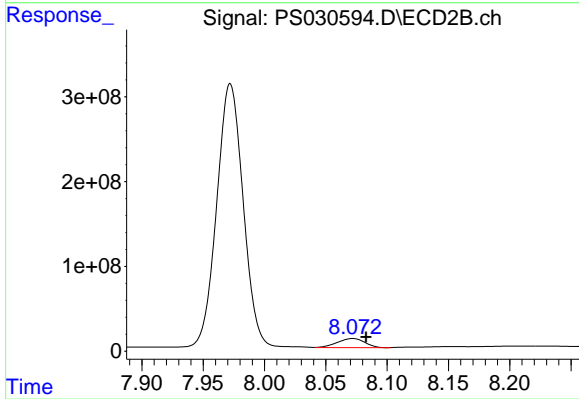
#5 DICAMBA

R.T.: 7.972 min
 Delta R.T.: -0.006 min
 Response: 4704384575
 Conc: 730.31 ng/ml



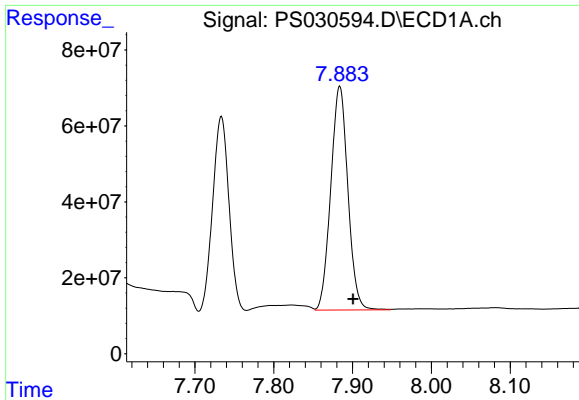
#6 MCPP

R.T.: 7.734 min
 Delta R.T.: -0.015 min
 Response: 586729446
 Conc: 59.24 ug/ml



#6 MCPP

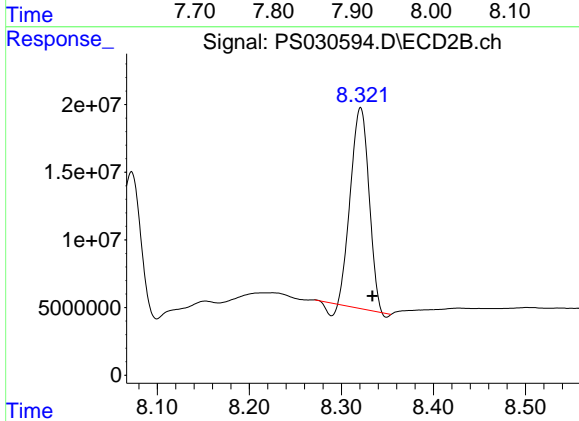
R.T.: 8.071 min
 Delta R.T.: -0.012 min
 Response: 167355374
 Conc: 72.40 ug/ml



#7 MCPA

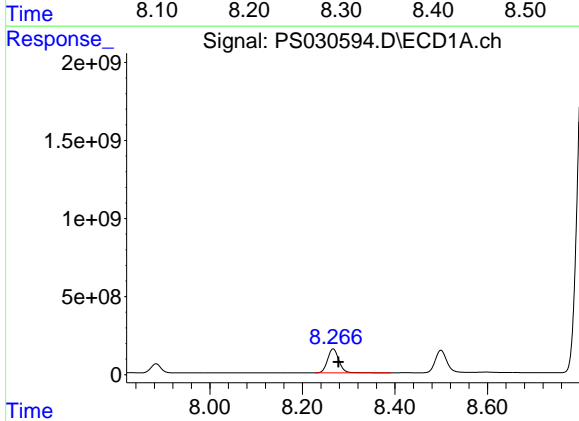
R.T.: 7.884 min
 Delta R.T.: -0.017 min
 Response: 888757765
 Conc: 70.04 ug/ml

Instrument :
 ECD_S
 ClientSampleId :
 HSTDCCC750



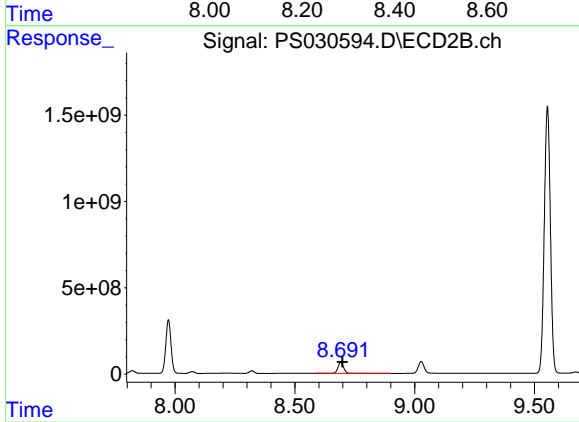
#7 MCPA

R.T.: 8.320 min
 Delta R.T.: -0.013 min
 Response: 201344764
 Conc: 65.25 ug/ml



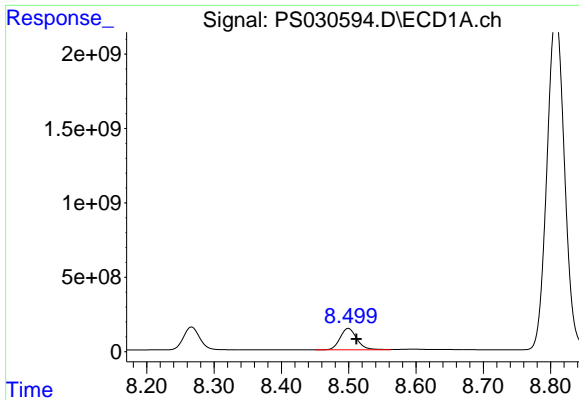
#8 DICHLORPROP

R.T.: 8.266 min
 Delta R.T.: -0.012 min
 Response: 2594875071
 Conc: 713.24 ng/ml



#8 DICHLORPROP

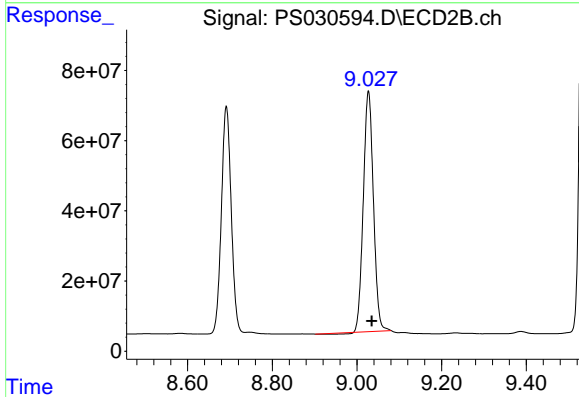
R.T.: 8.692 min
 Delta R.T.: -0.007 min
 Response: 1053946547
 Conc: 710.11 ng/ml



#9 2,4-D

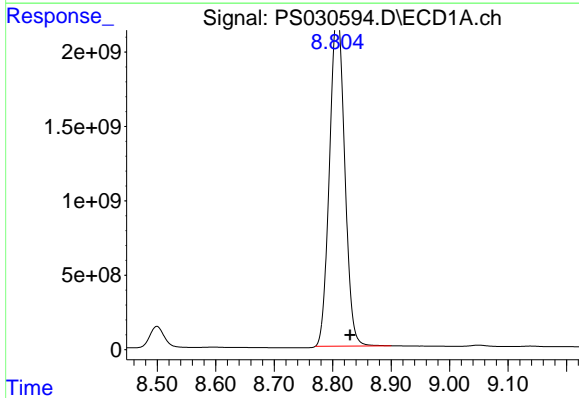
R.T.: 8.499 min
 Delta R.T.: -0.012 min
 Response: 2527018219
 Conc: 693.55 ng/ml

Instrument :
 ECD_S
 ClientSampleId :
 HSTDCCC750



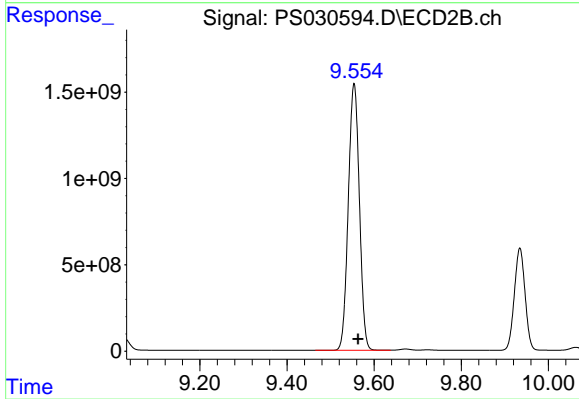
#9 2,4-D

R.T.: 9.027 min
 Delta R.T.: -0.007 min
 Response: 1129638105
 Conc: 718.45 ng/ml



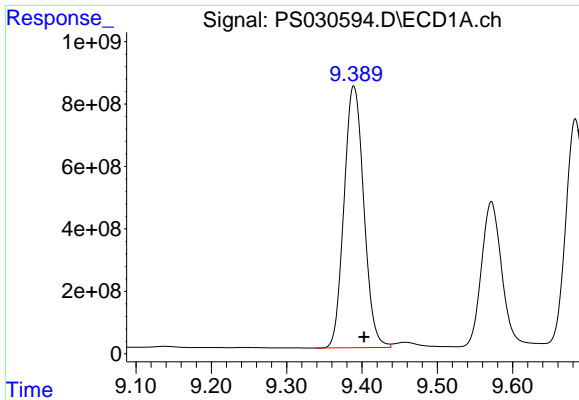
#10 Pentachlorophenol

R.T.: 8.808 min
 Delta R.T.: -0.022 min
 Response: 39870901584
 Conc: 785.07 ng/ml



#10 Pentachlorophenol

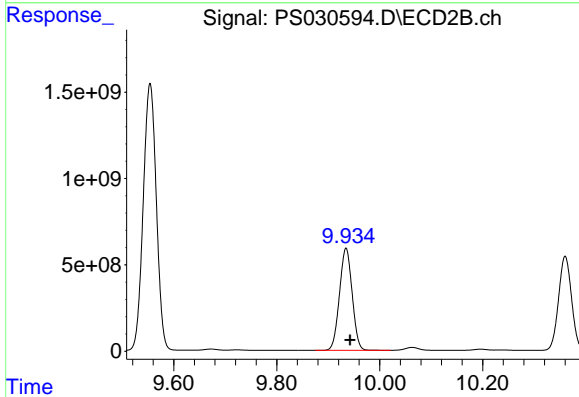
R.T.: 9.554 min
 Delta R.T.: -0.009 min
 Response: 27281329368
 Conc: 754.92 ng/ml



#11 2,4,5-TP (SILVEX)

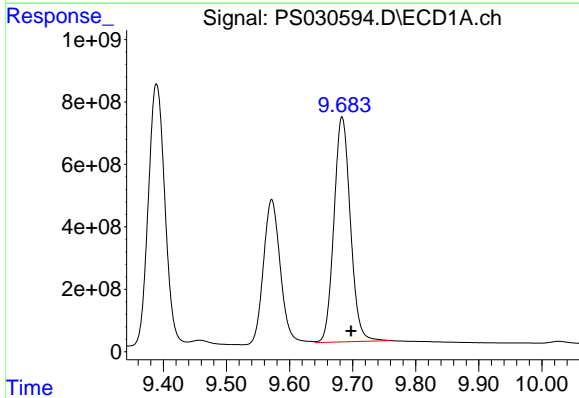
R.T.: 9.389 min
 Delta R.T.: -0.014 min
 Response: 15274829797
 Conc: 739.16 ng/ml

Instrument :
 ECD_S
 ClientSampleId :
 HSTDCCC750



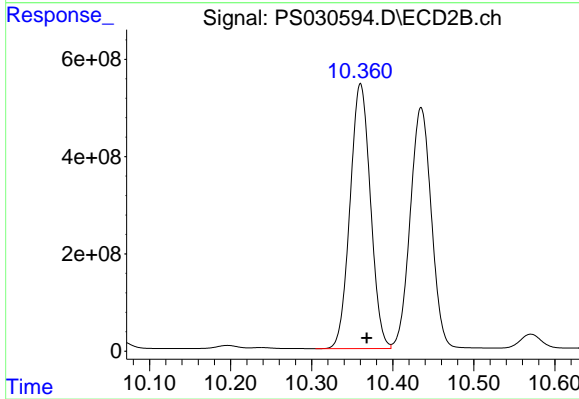
#11 2,4,5-TP (SILVEX)

R.T.: 9.935 min
 Delta R.T.: -0.008 min
 Response: 10094746496
 Conc: 735.94 ng/ml



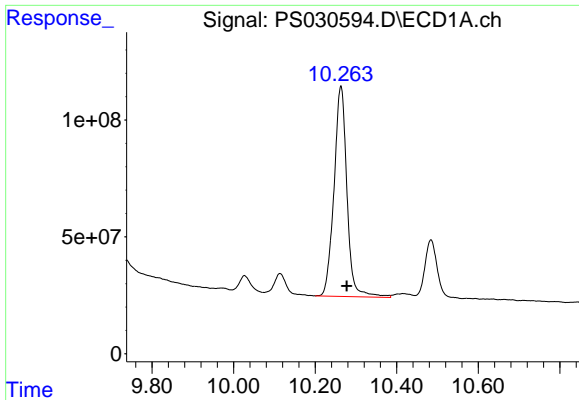
#12 2,4,5-T

R.T.: 9.683 min
 Delta R.T.: -0.014 min
 Response: 13035815399
 Conc: 707.27 ng/ml



#12 2,4,5-T

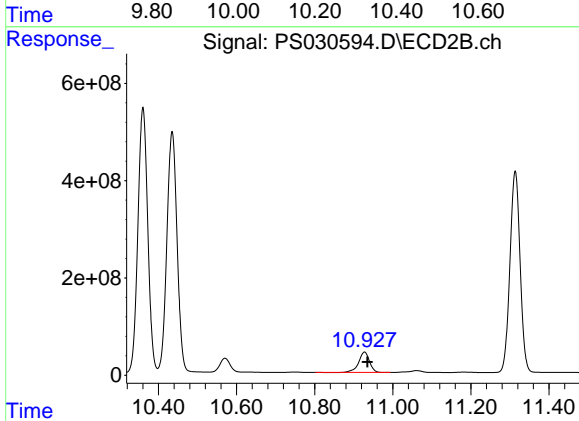
R.T.: 10.360 min
 Delta R.T.: -0.007 min
 Response: 9528005778
 Conc: 729.72 ng/ml



#13 2,4-DB

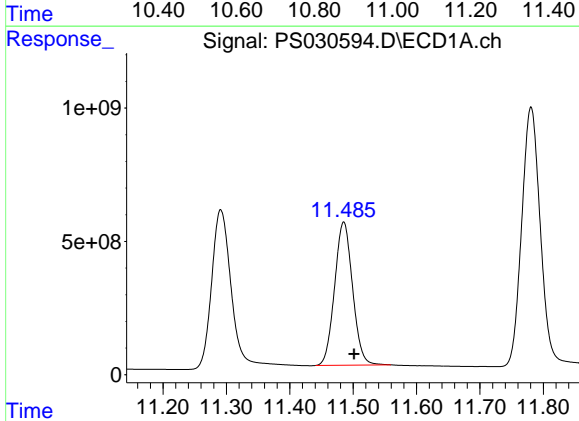
R.T.: 10.263 min
Delta R.T.: -0.014 min
Response: 1980851618
Conc: 652.38 ng/ml

Instrument :
ECD_S
ClientSampleId :
HSTDCCC750



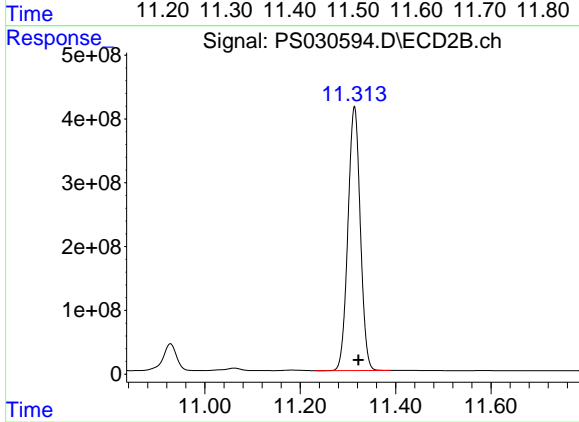
#13 2,4-DB

R.T.: 10.928 min
Delta R.T.: -0.007 min
Response: 813212523
Conc: 707.42 ng/ml



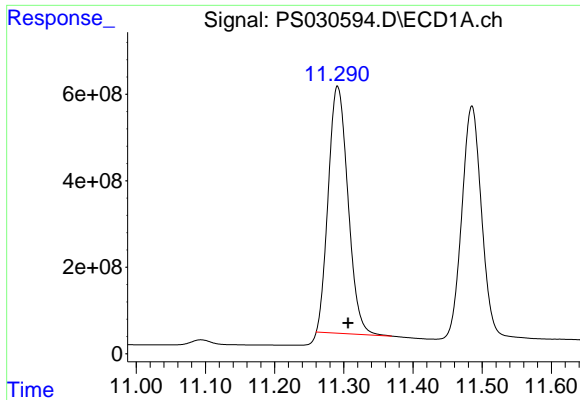
#14 DINOSEB

R.T.: 11.485 min
Delta R.T.: -0.016 min
Response: 10590707635
Conc: 736.75 ng/ml



#14 DINOSEB

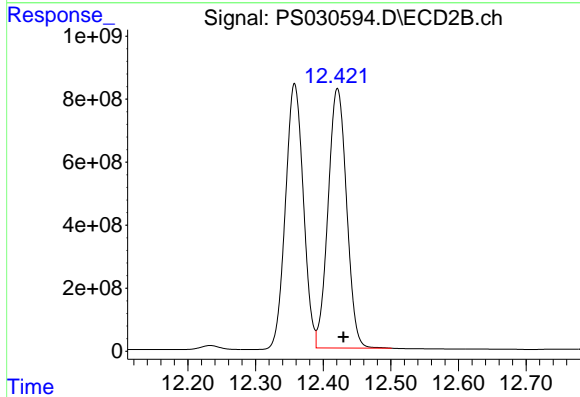
R.T.: 11.313 min
Delta R.T.: -0.008 min
Response: 7450406148
Conc: 741.33 ng/ml



#15 Picloram

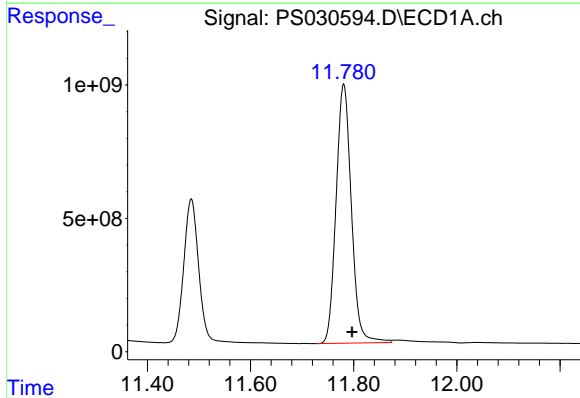
R.T.: 11.291 min
 Delta R.T.: -0.015 min
 Response: 11282898264
 Conc: 564.01 ng/ml

Instrument :
 ECD_S
 ClientSampleId :
 HSTDCCC750



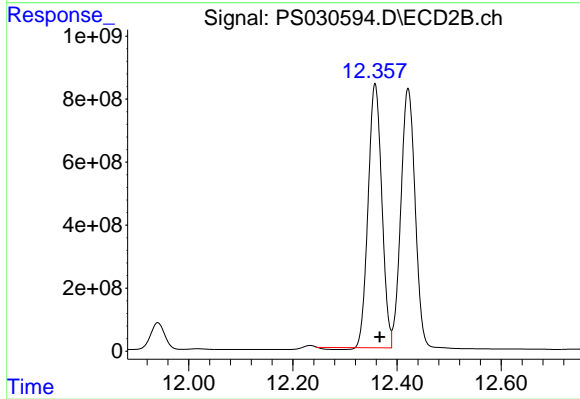
#15 Picloram

R.T.: 12.421 min
 Delta R.T.: -0.008 min
 Response: 15653735407
 Conc: 708.83 ng/ml



#16 DCPA

R.T.: 11.781 min
 Delta R.T.: -0.016 min
 Response: 19987892642
 Conc: 755.97 ng/ml



#16 DCPA

R.T.: 12.358 min
 Delta R.T.: -0.009 min
 Response: 15160388565
 Conc: 740.87 ng/ml