

Data Path : Z:\pestpcbsrv\HPCHEM1\ECD_S\Data\PS061025\
 Data File : PS030596.D
 Signal(s) : Signal #1: ECD1A.ch Signal #2: ECD2B.ch
 Acq On : 10 Jun 2025 15:17
 Operator : AR\AJ
 Sample : Q2240-05
 Misc :
 ALS Vial : 5 Sample Multiplier: 1

Instrument :
 ECD_S
 ClientSampleId :

Integration File signal 1: autoint1.e
 Integration File signal 2: autoint2.e
 Quant Time: Jun 11 01:36:28 2025
 Quant Method : Z:\pestpcbsrv\HPCHEM1\ECD_S\Method\PS060425.M
 Quant Title : 8080.M
 QLast Update : Wed Jun 04 13:21:22 2025
 Response via : Initial Calibration
 Integrator: ChemStation

Volume Inj. : 1 µl
 Signal #1 Phase : ZB-MR2 Signal #2 Phase: ZB-MR2
 Signal #1 Info : 30M x 0.32mm x0.5 Signal #2 Info : 30M x 0.32mm x 0.25µm

Compound	RT#1	RT#2	Resp#1	Resp#2	ng/ml	ng/ml

System Monitoring Compounds						
4) S 2,4-DCAA	7.360	7.765	206.0E6	80503682	54.575	74.845 #
Target Compounds						
1) T Dalapon	0.000	2.677f	0	2199.4E6	N.D.	802.711
2) T 3,5-DICHL...	6.510	6.716	8059849	5841320	1.485	3.734 #
3) T 4-Nitroph...	7.144	7.319	24750006	7700818	13.497	4.914 #
5) T DICAMBA	7.575	7.973	15436187	26179384	1.001	4.064 #
6) T MCPP	7.726	8.084	4410199	9653551	<MDL	4.176 #
7) T MCPA	7.894	8.307f	58287281	19209844	4.593	6.225 #
8) T DICHLORPROP	8.245f	8.741f	45292937	96141774	12.449	64.777 #
9) T 2,4-D	8.523	9.025	275.2E6	84322063	75.518	53.629 #
10) T Pentachlo...	8.812	9.557	2016338	62190998	<MDL	1.721 #
11) T 2,4,5-TP ...	9.398	9.910f	25593536	88181671	1.238	6.429 #
12) T 2,4,5-T	9.667f	10.358	39440770	144.0E6	2.140	11.025 #
13) T 2,4-DB	10.262	10.932	186.6E6	101.3E6	61.466	88.122 #
14) T DINOSEB	11.493	11.320	17187777	884.9E6	1.196	88.045 #
15) T Picloram	11.319	12.424	20534317	41937499	1.026	1.899 #
16) T DCPA	11.785	12.317f	67154855	34099110	2.540	1.666 #

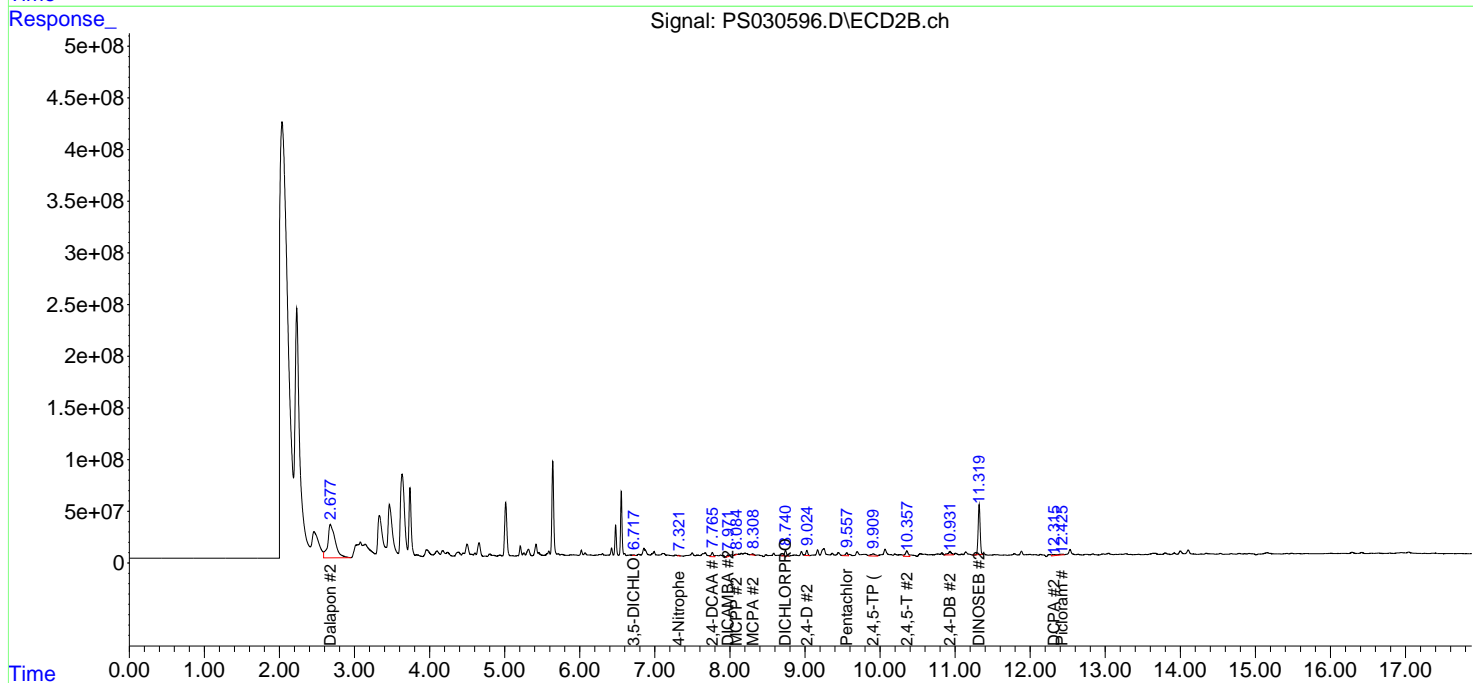
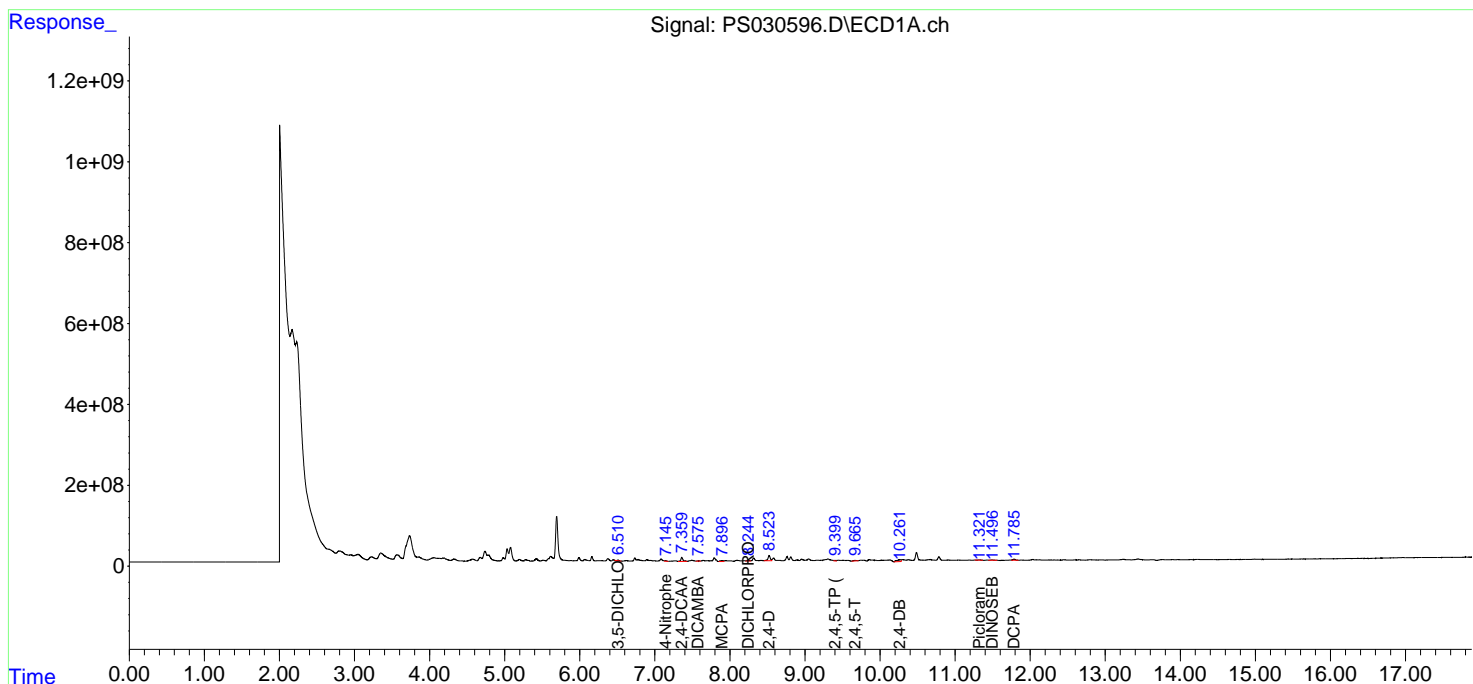
(f)=RT Delta > 1/2 Window (#)=Amounts differ by > 25% (m)=manual int.

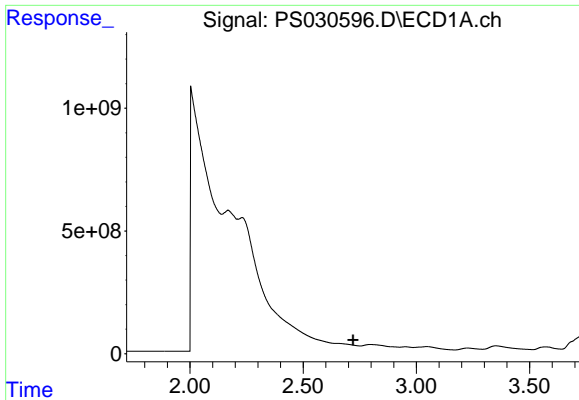
Data Path : Z:\pestpcbsrv\HPCHEM1\ECD_S\Data\PS061025\
 Data File : PS030596.D
 Signal(s) : Signal #1: ECD1A.ch Signal #2: ECD2B.ch
 Acq On : 10 Jun 2025 15:17
 Operator : AR\AJ
 Sample : Q2240-05
 Misc :
 ALS Vial : 5 Sample Multiplier: 1

Instrument :
 ECD_S
 ClientSampleId :

Integration File signal 1: autoint1.e
 Integration File signal 2: autoint2.e
 Quant Time: Jun 11 01:36:28 2025
 Quant Method : Z:\pestpcbsrv\HPCHEM1\ECD_S\Method\PS060425.M
 Quant Title : 8080.M
 QLast Update : Wed Jun 04 13:21:22 2025
 Response via : Initial Calibration
 Integrator: ChemStation

Volume Inj. : 1 µl
 Signal #1 Phase : ZB-MR1 Signal #2 Phase: ZB-MR2
 Signal #1 Info : 30M x 0.32mm x0.5 Signal #2 Info : 30M x 0.32mm x 0.25µm

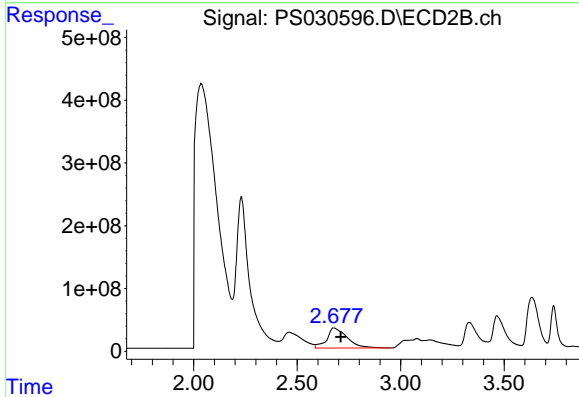




#1 Dalapon

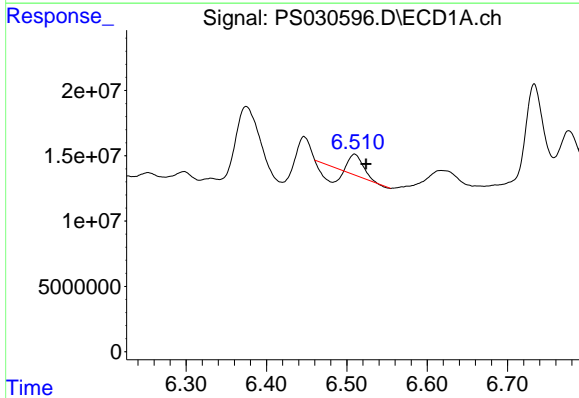
R.T.: 0.000 min
 Exp R.T.: 2.720 min
 Response: 0
 Conc: N.D.

Instrument :
 ECD_S
 ClientSampleId :



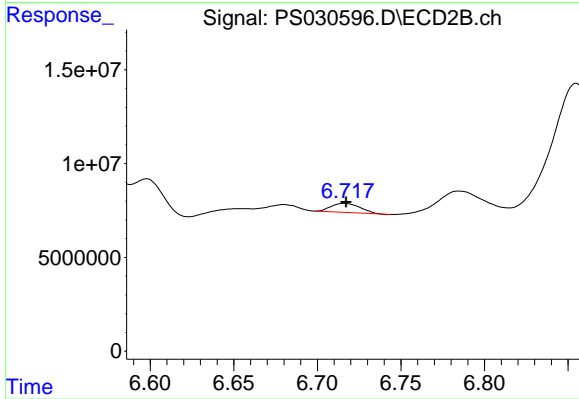
#1 Dalapon

R.T.: 2.677 min
 Delta R.T.: -0.033 min
 Response: 219440597
 Conc: 802.71 ng/ml



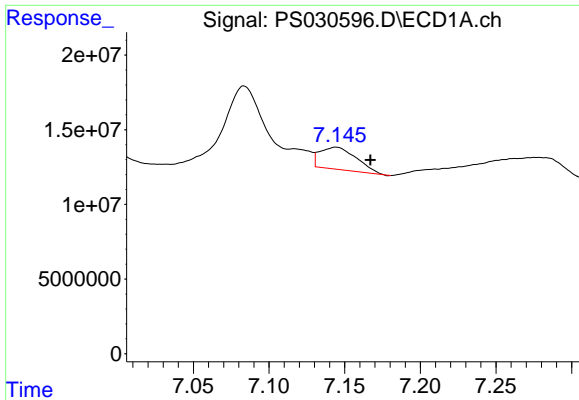
#2 3,5-DICHLOROBENZOIC ACID

R.T.: 6.510 min
 Delta R.T.: -0.014 min
 Response: 8059849
 Conc: 1.49 ng/ml



#2 3,5-DICHLOROBENZOIC ACID

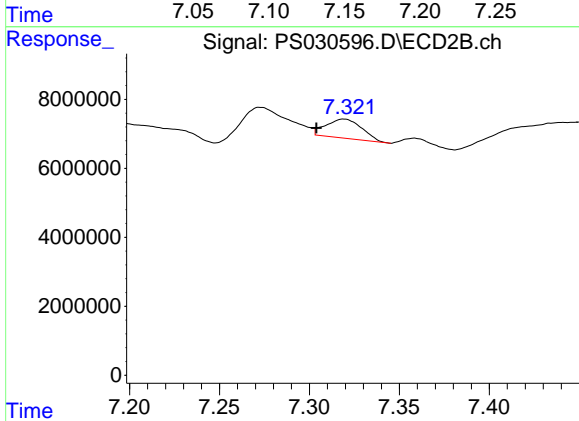
R.T.: 6.716 min
 Delta R.T.: 0.000 min
 Response: 5841320
 Conc: 3.73 ng/ml



#3 4-Nitrophenol

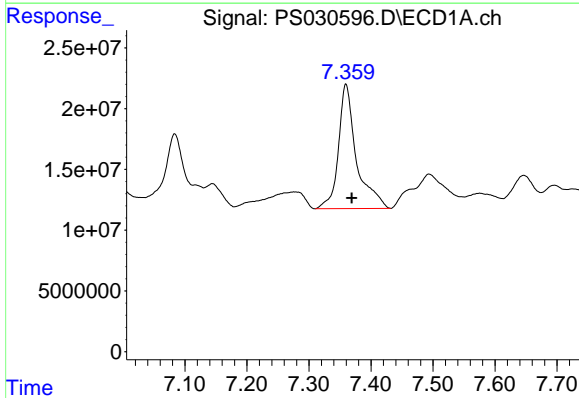
R.T.: 7.144 min
Delta R.T.: -0.023 min
Response: 24750006
Conc: 13.50 ng/ml

Instrument :
ECD_S
ClientSampleId :



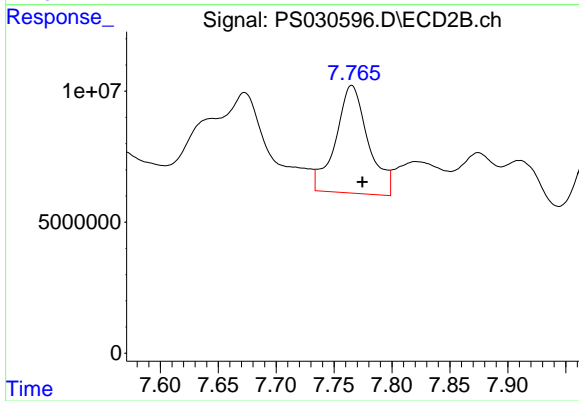
#3 4-Nitrophenol

R.T.: 7.319 min
Delta R.T.: 0.015 min
Response: 7700818
Conc: 4.91 ng/ml



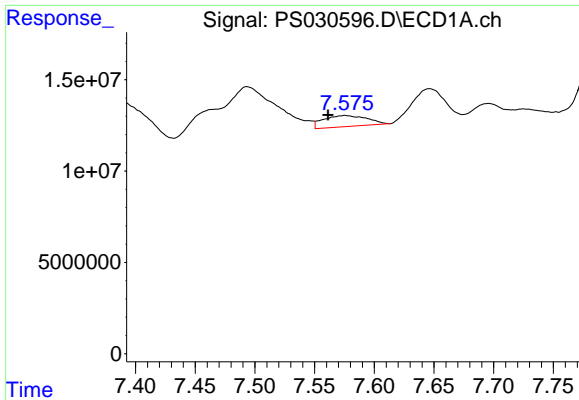
#4 2,4-DCAA

R.T.: 7.360 min
Delta R.T.: -0.009 min
Response: 206028719
Conc: 54.58 ng/ml



#4 2,4-DCAA

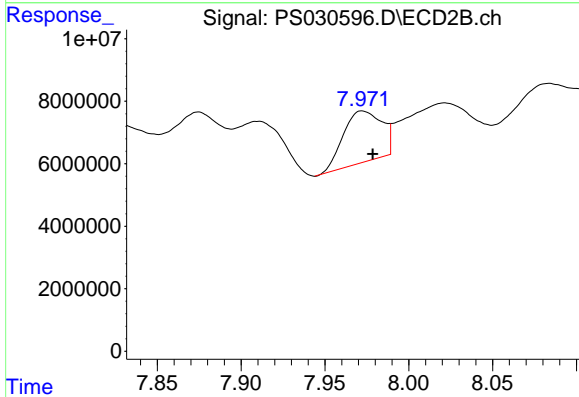
R.T.: 7.765 min
Delta R.T.: -0.009 min
Response: 80503682
Conc: 74.84 ng/ml



#5 DICAMBA

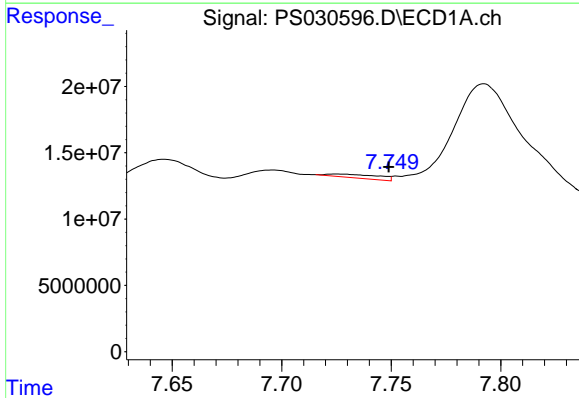
R.T.: 7.575 min
 Delta R.T.: 0.014 min
 Response: 15436187
 Conc: 1.00 ng/ml

Instrument :
 ECD_S
 ClientSampleId :



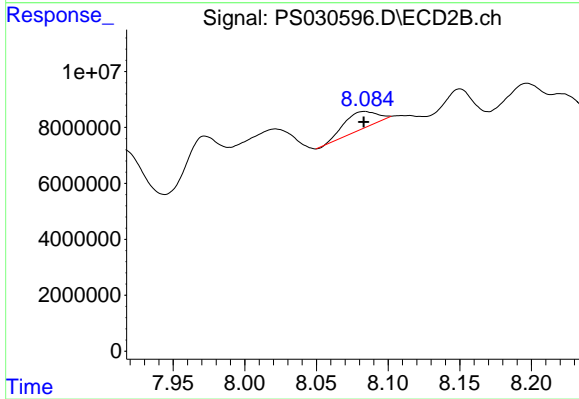
#5 DICAMBA

R.T.: 7.973 min
 Delta R.T.: -0.006 min
 Response: 26179384
 Conc: 4.06 ng/ml



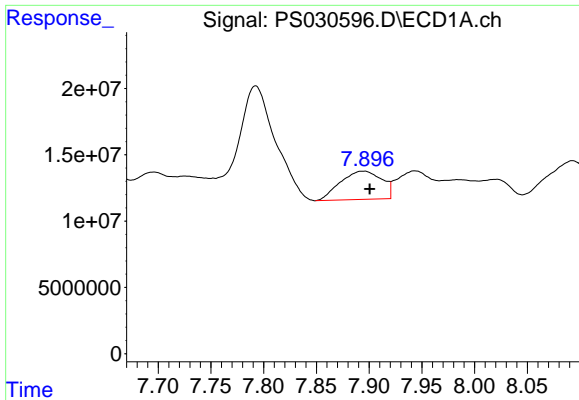
#6 MCPP

R.T.: 7.726 min
 Delta R.T.: -0.023 min
 Response: 4410199
 Conc: N.D.



#6 MCPP

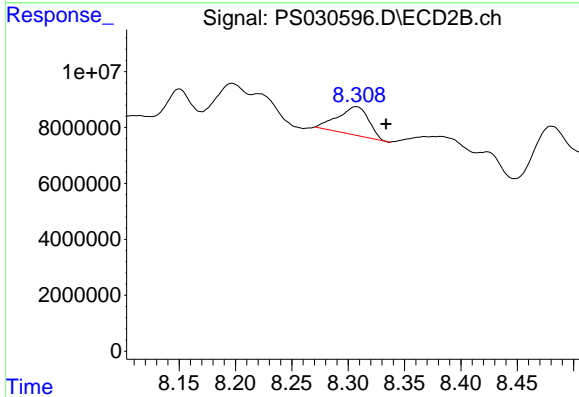
R.T.: 8.084 min
 Delta R.T.: 0.000 min
 Response: 9653551
 Conc: 4.18 ug/ml



#7 MCPA

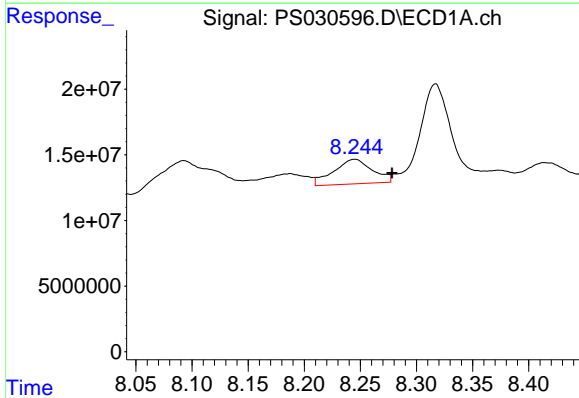
R.T.: 7.894 min
 Delta R.T.: -0.006 min
 Response: 58287281
 Conc: 4.59 ug/ml

Instrument :
 ECD_S
 ClientSampleId :



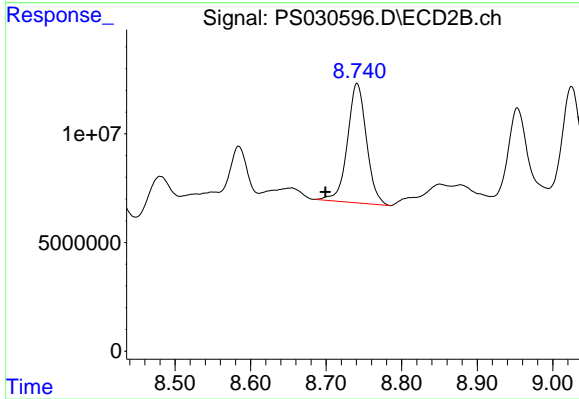
#7 MCPA

R.T.: 8.307 min
 Delta R.T.: -0.027 min
 Response: 19209844
 Conc: 6.23 ug/ml



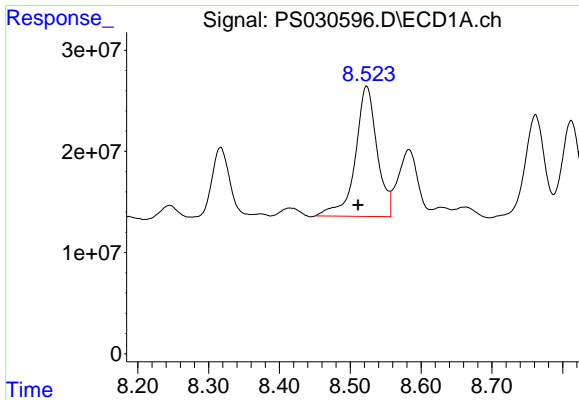
#8 DICHLORPROP

R.T.: 8.245 min
 Delta R.T.: -0.033 min
 Response: 45292937
 Conc: 12.45 ng/ml



#8 DICHLORPROP

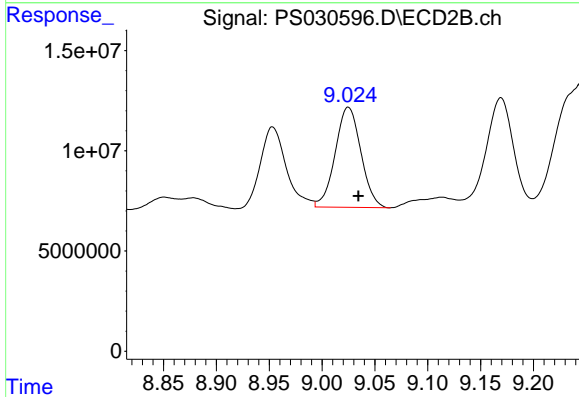
R.T.: 8.741 min
 Delta R.T.: 0.042 min
 Response: 96141774
 Conc: 64.78 ng/ml



#9 2,4-D

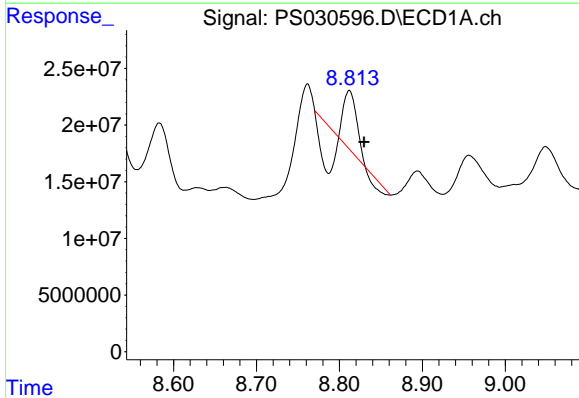
R.T.: 8.523 min
 Delta R.T.: 0.012 min
 Response: 275158505
 Conc: 75.52 ng/ml

Instrument :
 ECD_S
 ClientSampleId :



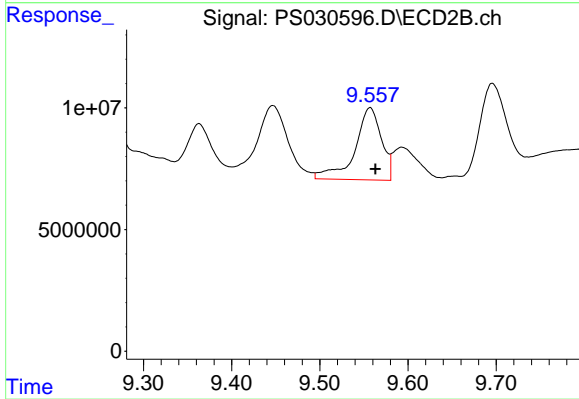
#9 2,4-D

R.T.: 9.025 min
 Delta R.T.: -0.010 min
 Response: 84322063
 Conc: 53.63 ng/ml



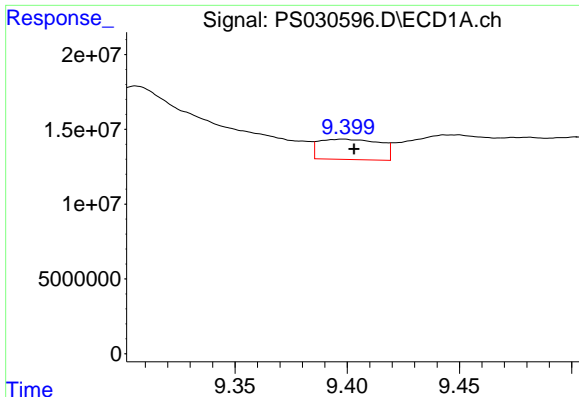
#10 Pentachlorophenol

R.T.: 8.812 min
 Delta R.T.: -0.018 min
 Response: 2016338
 Conc: N.D.



#10 Pentachlorophenol

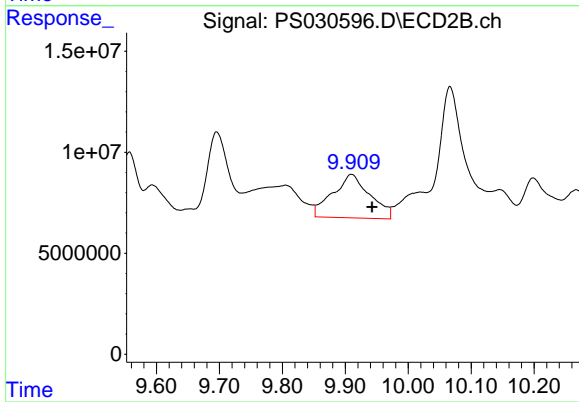
R.T.: 9.557 min
 Delta R.T.: -0.006 min
 Response: 62190998
 Conc: 1.72 ng/ml



#11 2,4,5-TP (SILVEX)

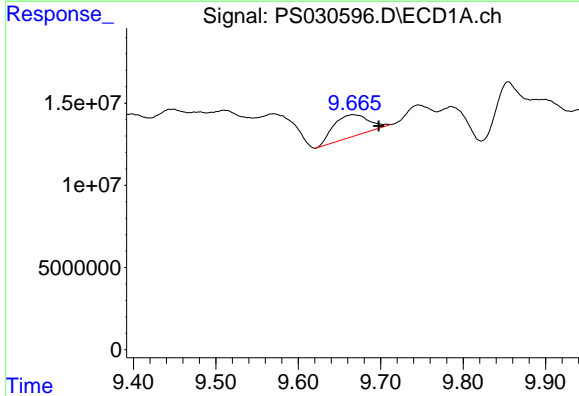
R.T.: 9.398 min
 Delta R.T.: -0.005 min
 Response: 25593536
 Conc: 1.24 ng/ml

Instrument :
 ECD_S
 ClientSampleId :



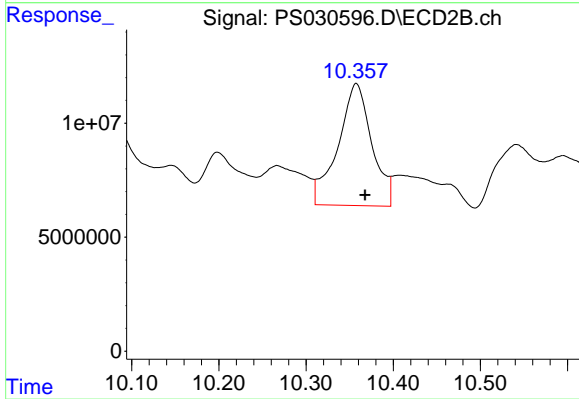
#11 2,4,5-TP (SILVEX)

R.T.: 9.910 min
 Delta R.T.: -0.033 min
 Response: 88181671
 Conc: 6.43 ng/ml



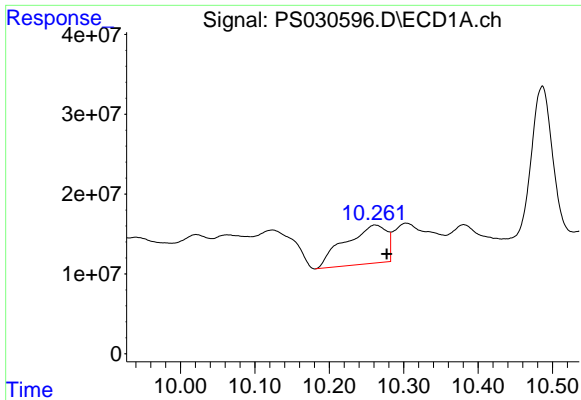
#12 2,4,5-T

R.T.: 9.667 min
 Delta R.T.: -0.031 min
 Response: 39440770
 Conc: 2.14 ng/ml



#12 2,4,5-T

R.T.: 10.358 min
 Delta R.T.: -0.010 min
 Response: 143959917
 Conc: 11.03 ng/ml

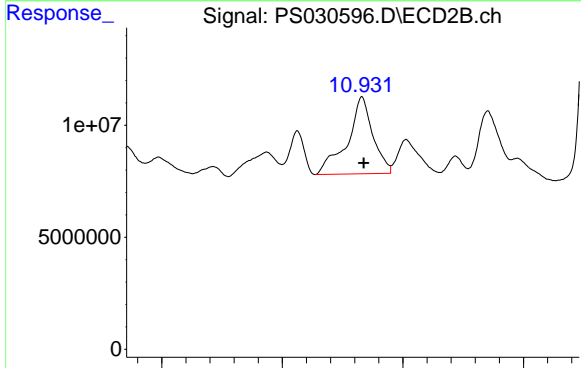


#13 2,4-DB

R.T.: 10.262 min
 Delta R.T.: -0.016 min
 Response: 186633859
 Conc: 61.47 ng/ml

Instrument :
 ECD_S
 ClientSampleId :

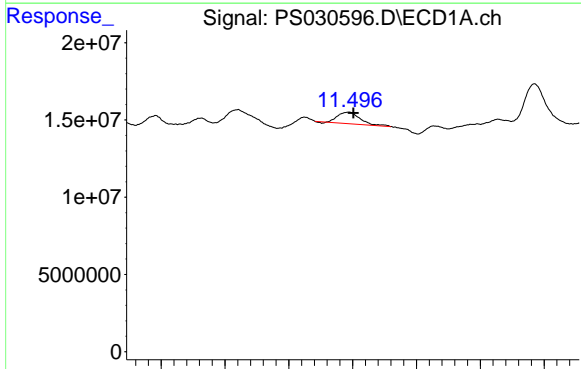
Time



#13 2,4-DB

R.T.: 10.932 min
 Delta R.T.: -0.003 min
 Response: 101300555
 Conc: 88.12 ng/ml

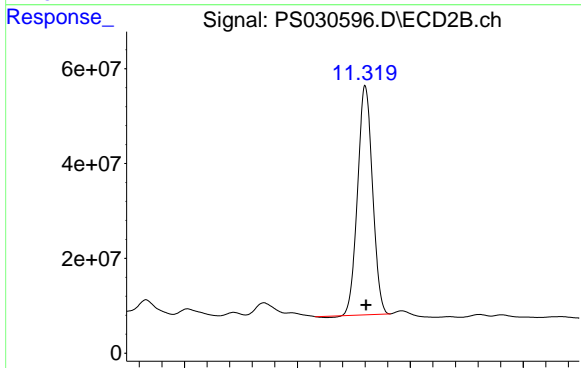
Time



#14 DINOSEB

R.T.: 11.493 min
 Delta R.T.: -0.008 min
 Response: 17187777
 Conc: 1.20 ng/ml

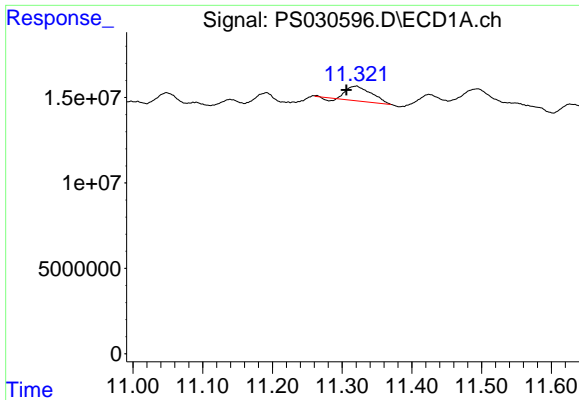
Time



#14 DINOSEB

R.T.: 11.320 min
 Delta R.T.: -0.002 min
 Response: 884862652
 Conc: 88.05 ng/ml

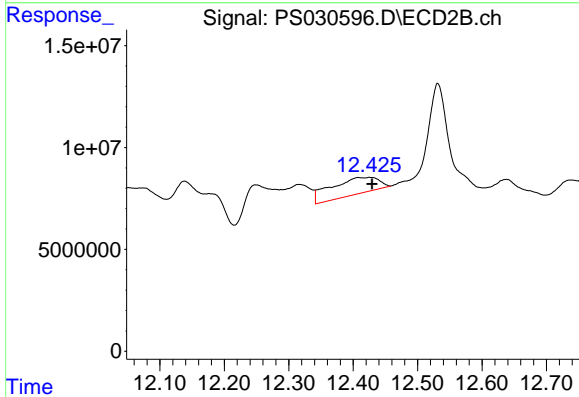
Time



#15 Picloram

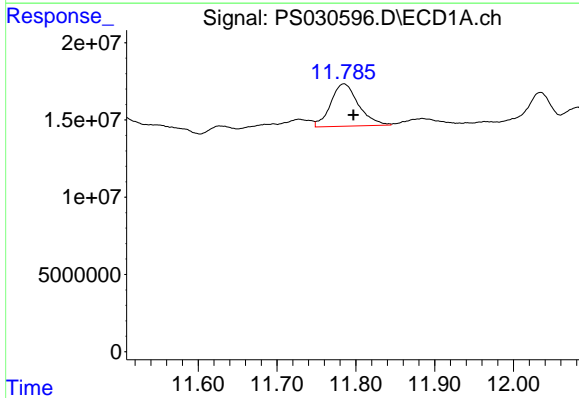
R.T.: 11.319 min
 Delta R.T.: 0.013 min
 Response: 20534317
 Conc: 1.03 ng/ml

Instrument :
 ECD_S
 ClientSampleId :



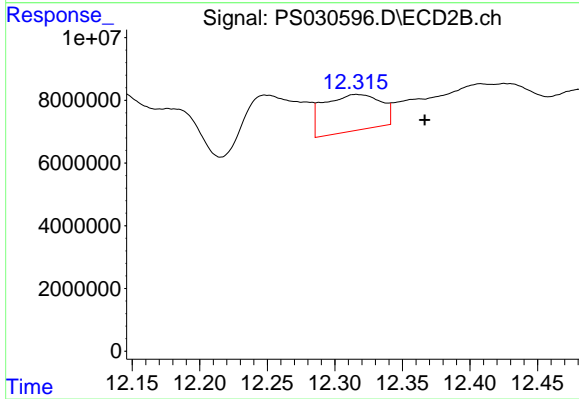
#15 Picloram

R.T.: 12.424 min
 Delta R.T.: -0.006 min
 Response: 41937499
 Conc: 1.90 ng/ml



#16 DCPA

R.T.: 11.785 min
 Delta R.T.: -0.012 min
 Response: 67154855
 Conc: 2.54 ng/ml



#16 DCPA

R.T.: 12.317 min
 Delta R.T.: -0.049 min
 Response: 34099110
 Conc: 1.67 ng/ml