

Data Path : Z:\pestpcbsrv\HPCHEM1\ECD_S\Data\PS061025\
 Data File : PS030600.D
 Signal(s) : Signal #1: ECD1A.ch Signal #2: ECD2B.ch
 Acq On : 10 Jun 2025 17:36
 Operator : AR\AJ
 Sample : Q2246-01
 Misc :
 ALS Vial : 9 Sample Multiplier: 1

Instrument :
 ECD_S
 ClientSampleId :
 BU-03-060525

Integration File signal 1: autoint1.e
 Integration File signal 2: autoint2.e
 Quant Time: Jun 11 01:37:12 2025
 Quant Method : Z:\pestpcbsrv\HPCHEM1\ECD_S\Method\PS060425.M
 Quant Title : 8080.M
 QLast Update : Wed Jun 04 13:21:22 2025
 Response via : Initial Calibration
 Integrator: ChemStation

Volume Inj. : 1 µl
 Signal #1 Phase : ZB-MR2 Signal #2 Phase: ZB-MR2
 Signal #1 Info : 30M x 0.32mm x0.5 Signal #2 Info : 30M x 0.32mm x 0.25µm

Compound	RT#1	RT#2	Resp#1	Resp#2	ng/ml	ng/ml

System Monitoring Compounds						
4) S 2,4-DCAA	7.358	7.768	473.8E6	141.6E6	125.506	131.663
Target Compounds						
1) T Dalapon	0.000	2.685	0	972.6E6	N.D.	354.969
3) T 4-Nitroph...	7.157	7.305	1156960	39779899	<MDL	25.382 #
5) T DICAMBA	7.549	7.971	24795398	43885454	1.608	6.813 #
6) T MCPP	7.790f	8.074	150.7E6	4292513	15.215	1.857 #
8) T DICHLORPROP	8.307f	8.660f	31906098	15354902	8.770	10.346
9) T 2,4-D	8.499	9.028	215.0E6	61703573	59.003	39.244 #
10) T Pentachlo...	8.810	9.597f	8220069	64261375	<MDL	1.778 #
11) T 2,4,5-TP ...	9.436f	9.910f	33343972	53298609	1.614	3.886 #
12) T 2,4,5-T	9.685	10.365	7916753	44556138	<MDL	3.412 #
13) T 2,4-DB	10.300	10.907f	139.7E6	27799468	46.008	24.183 #
14) T DINOSEB	11.522	11.323	2430027	67693062	<MDL	6.736 #
15) T Picloram	11.292	12.421	262.4E6	347.6E6	13.118	15.738
16) T DCPA	11.772	0.000	24482350	0	<MDL	N.D. #

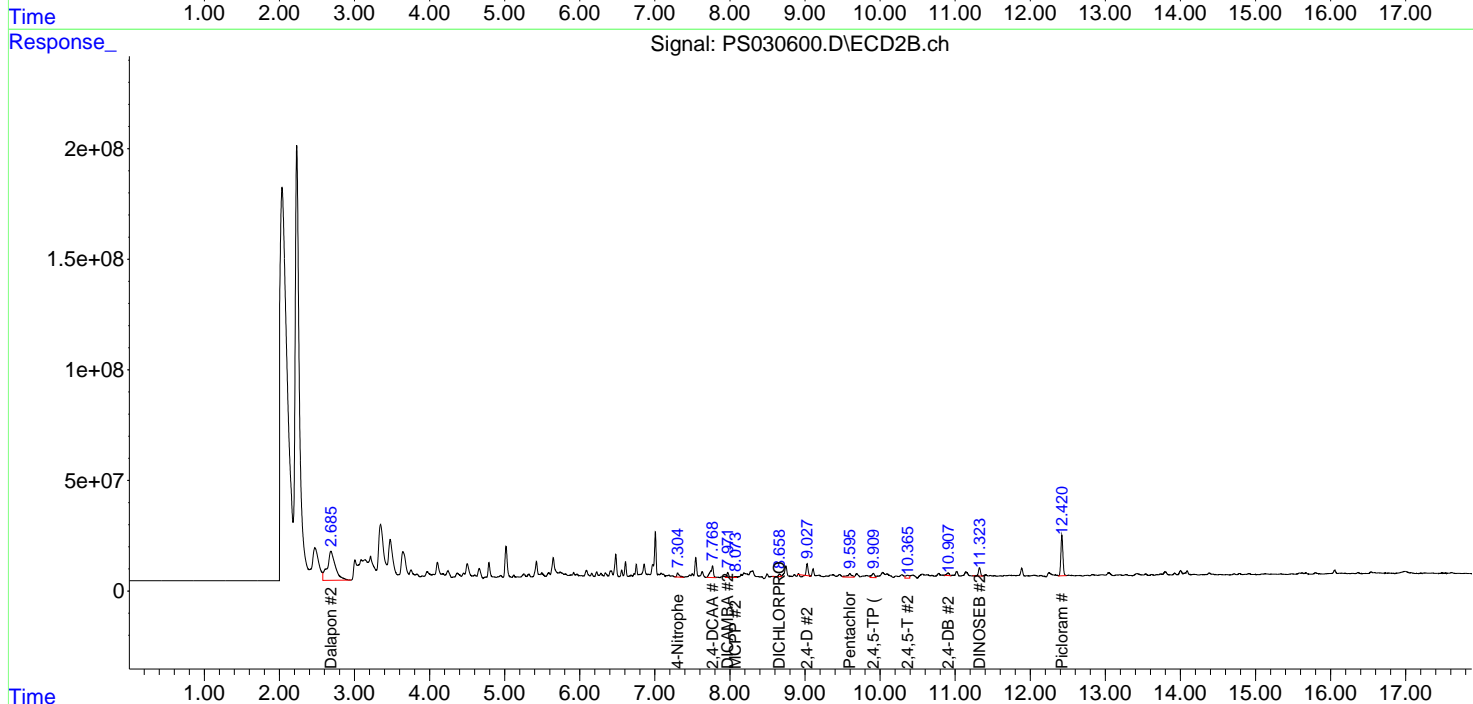
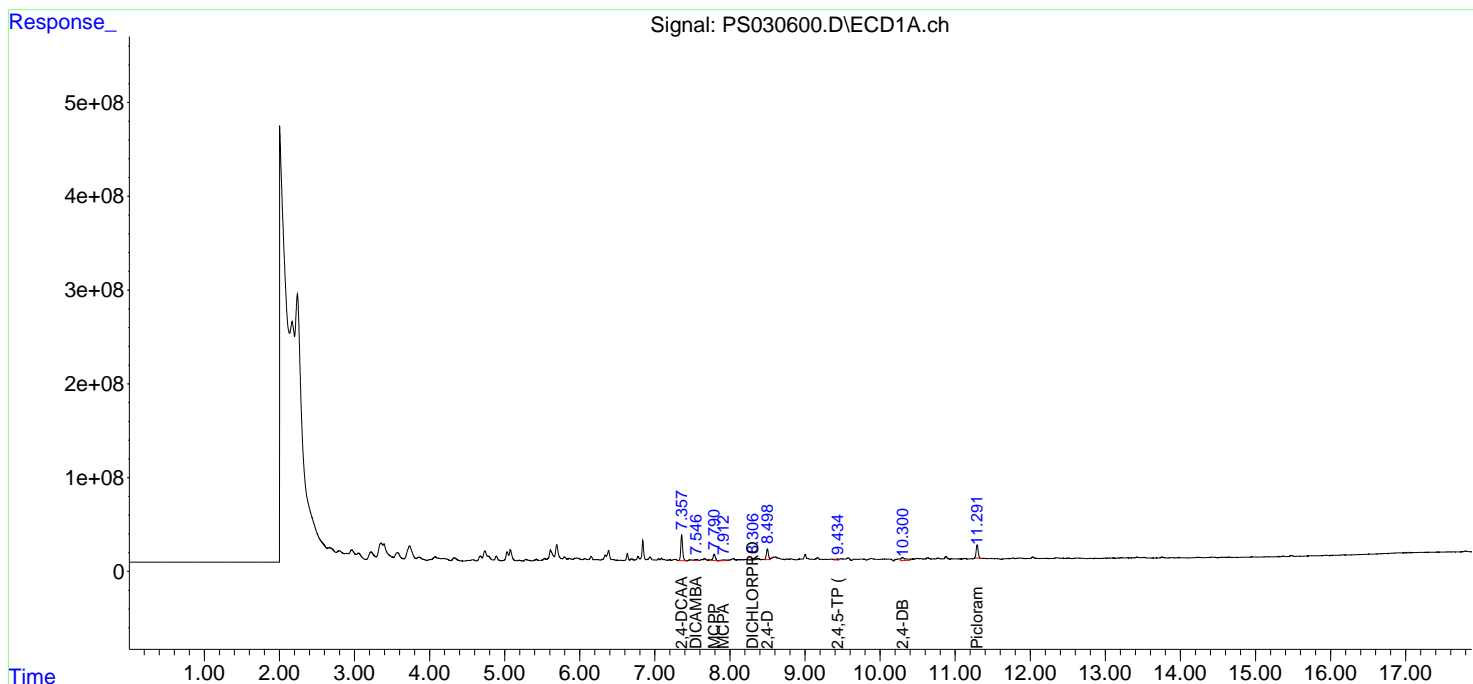
(f)=RT Delta > 1/2 Window (#)=Amounts differ by > 25% (m)=manual int.

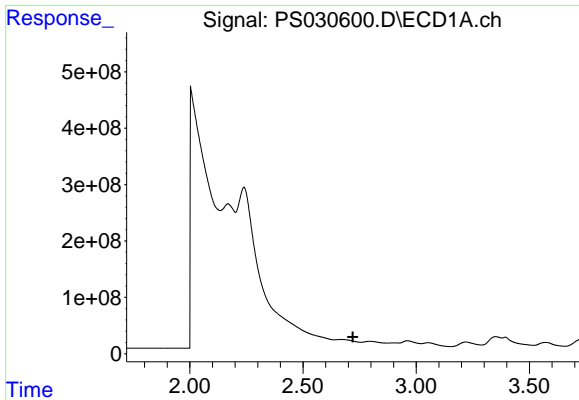
Data Path : Z:\pestpcbsrv\HPCHEM1\ECD_S\Data\PS061025\
 Data File : PS030600.D
 Signal(s) : Signal #1: ECD1A.ch Signal #2: ECD2B.ch
 Acq On : 10 Jun 2025 17:36
 Operator : AR\AJ
 Sample : Q2246-01
 Misc :
 ALS Vial : 9 Sample Multiplier: 1

Instrument :
 ECD_S
 ClientSampleId :
 BU-03-060525

Integration File signal 1: autoint1.e
 Integration File signal 2: autoint2.e
 Quant Time: Jun 11 01:37:12 2025
 Quant Method : Z:\pestpcbsrv\HPCHEM1\ECD_S\Method\PS060425.M
 Quant Title : 8080.M
 QLast Update : Wed Jun 04 13:21:22 2025
 Response via : Initial Calibration
 Integrator: ChemStation

Volume Inj. : 1 µl
 Signal #1 Phase : ZB-MR1 Signal #2 Phase: ZB-MR2
 Signal #1 Info : 30M x 0.32mm x0.5 Signal #2 Info : 30M x 0.32mm x 0.25µm

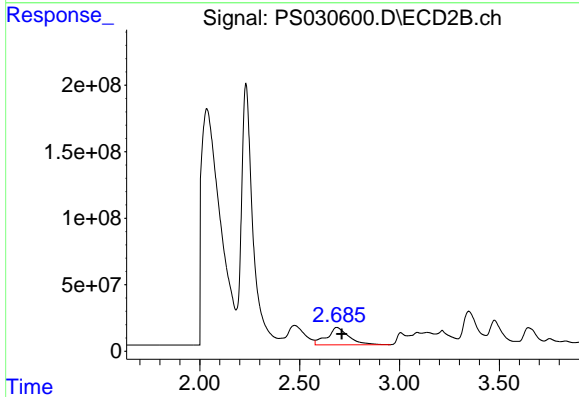




#1 Dalapon

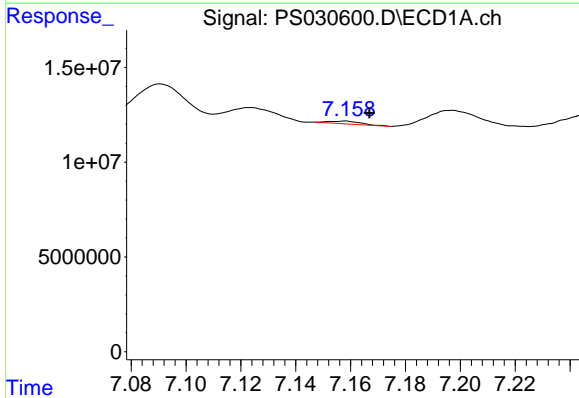
R.T.: 0.000 min
 Exp R.T.: 2.720 min
 Response: 0
 Conc: N.D.

Instrument :
 ECD_S
 ClientSampleId :
 BU-03-060525



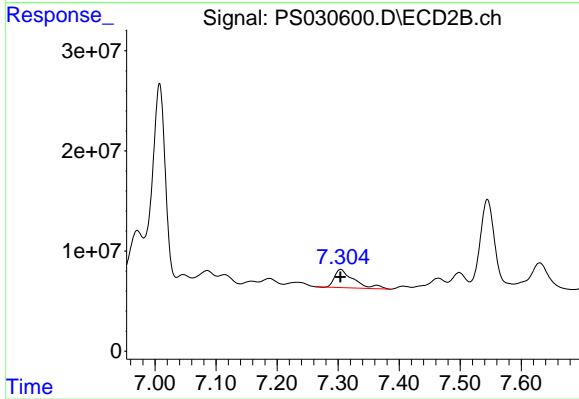
#1 Dalapon

R.T.: 2.685 min
 Delta R.T.: -0.025 min
 Response: 972619132
 Conc: 354.97 ng/ml



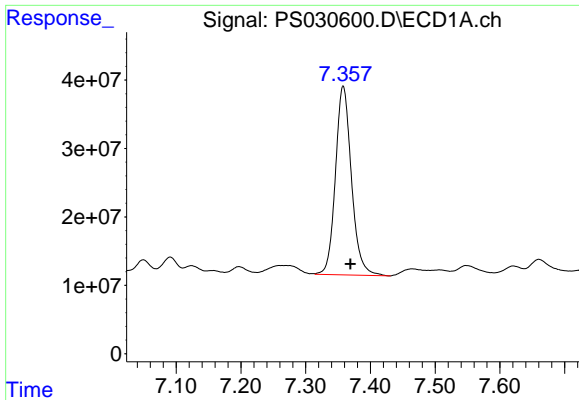
#3 4-Nitrophenol

R.T.: 7.157 min
 Delta R.T.: -0.010 min
 Response: 1156960
 Conc: N.D.



#3 4-Nitrophenol

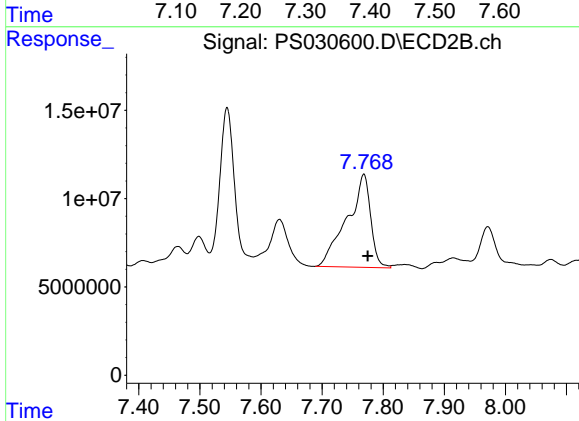
R.T.: 7.305 min
 Delta R.T.: 0.001 min
 Response: 39779899
 Conc: 25.38 ng/ml



#4 2,4-DCAA

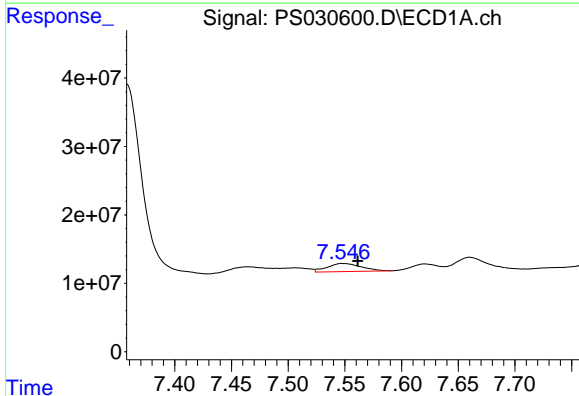
R.T.: 7.358 min
 Delta R.T.: -0.011 min
 Response: 473803583
 Conc: 125.51 ng/ml

Instrument :
 ECD_S
 ClientSampleId :
 BU-03-060525



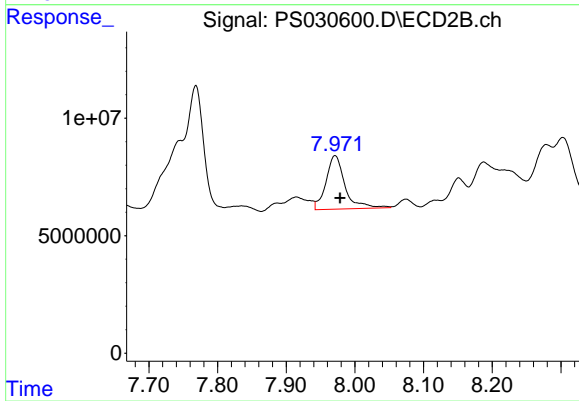
#4 2,4-DCAA

R.T.: 7.768 min
 Delta R.T.: -0.007 min
 Response: 141617876
 Conc: 131.66 ng/ml



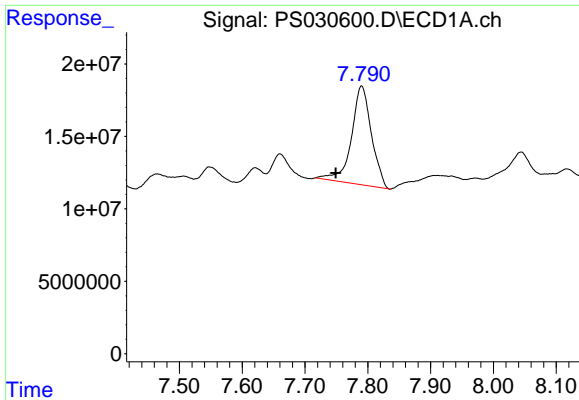
#5 DICAMBA

R.T.: 7.549 min
 Delta R.T.: -0.013 min
 Response: 24795398
 Conc: 1.61 ng/ml



#5 DICAMBA

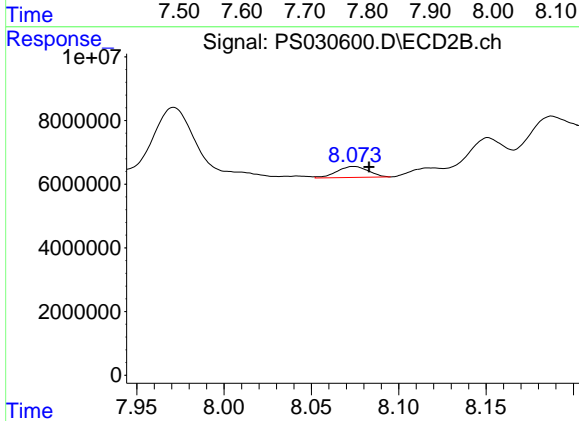
R.T.: 7.971 min
 Delta R.T.: -0.007 min
 Response: 43885454
 Conc: 6.81 ng/ml



#6 MCP

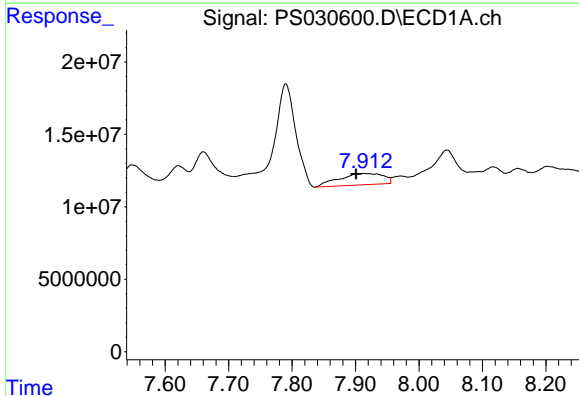
R.T.: 7.790 min
 Delta R.T.: 0.041 min
 Response: 150702947
 Conc: 15.21 ug/ml

Instrument : ECD_S
 ClientSampleId : BU-03-060525



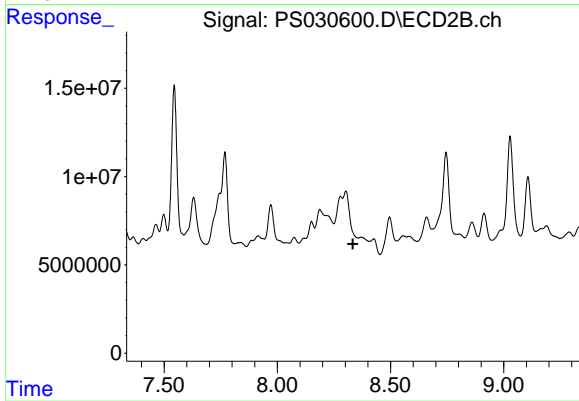
#6 MCP

R.T.: 8.074 min
 Delta R.T.: -0.009 min
 Response: 4292513
 Conc: 1.86 ug/ml



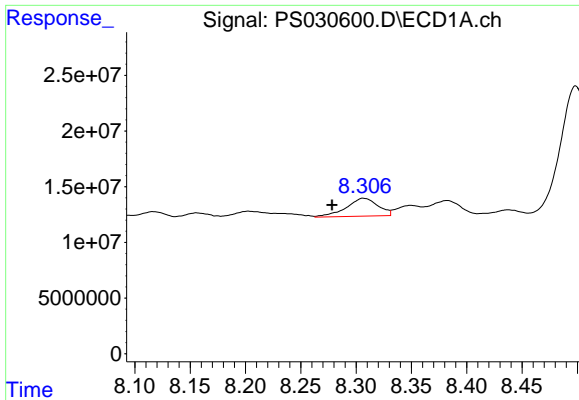
#7 MCP

R.T.: 7.910 min
 Delta R.T.: 0.010 min
 Response: 38257336
 Conc: 3.01 ug/ml



#7 MCP

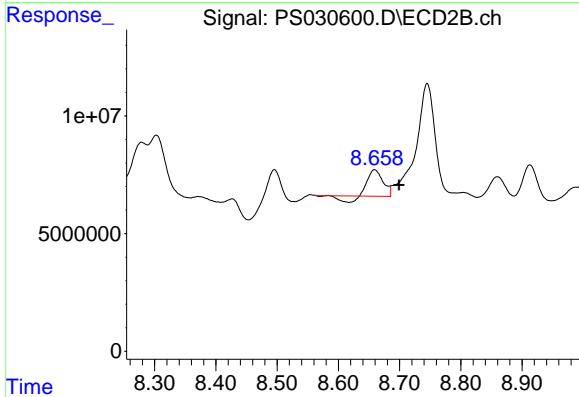
R.T.: 8.301 min
 Delta R.T.: -0.033 min
 Response: -32561538
 Conc: N.D.



#8 DICHLORPROP

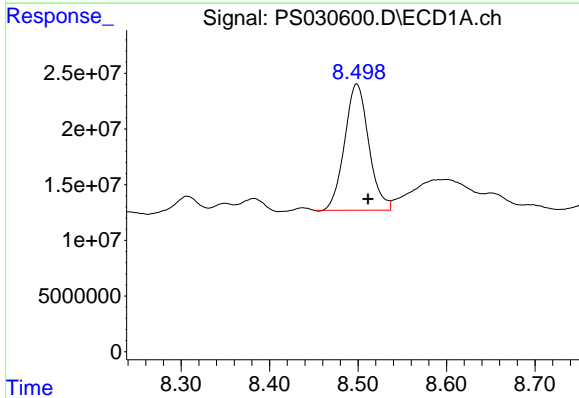
R.T.: 8.307 min
 Delta R.T.: 0.029 min
 Response: 31906098
 Conc: 8.77 ng/ml

Instrument :
 ECD_S
 ClientSampleId :
 BU-03-060525



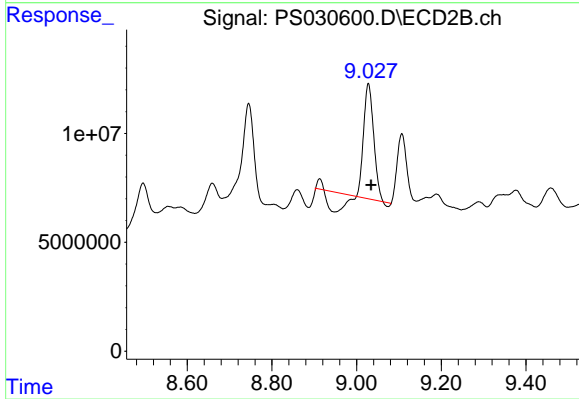
#8 DICHLORPROP

R.T.: 8.660 min
 Delta R.T.: -0.039 min
 Response: 15354902
 Conc: 10.35 ng/ml



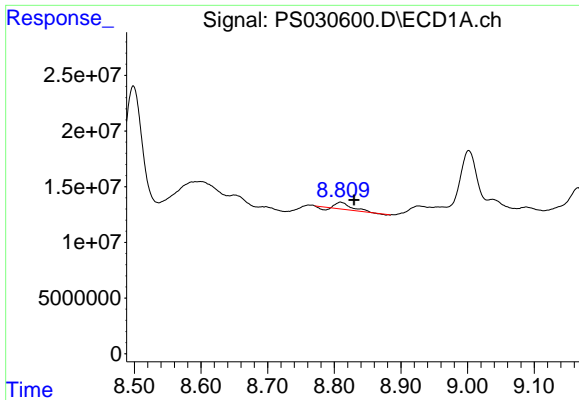
#9 2,4-D

R.T.: 8.499 min
 Delta R.T.: -0.013 min
 Response: 214983543
 Conc: 59.00 ng/ml



#9 2,4-D

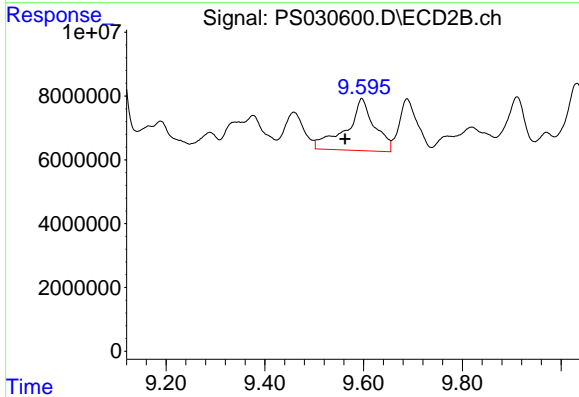
R.T.: 9.028 min
 Delta R.T.: -0.006 min
 Response: 61703573
 Conc: 39.24 ng/ml



#10 Pentachlorophenol

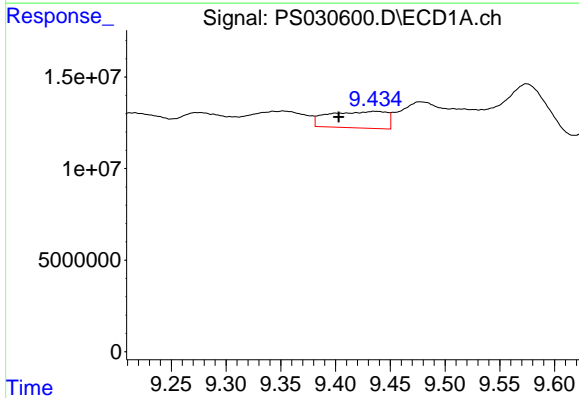
R.T.: 8.810 min
 Delta R.T.: -0.020 min
 Response: 8220069
 Conc: N.D.

Instrument :
 ECD_S
 ClientSampleId :
 BU-03-060525



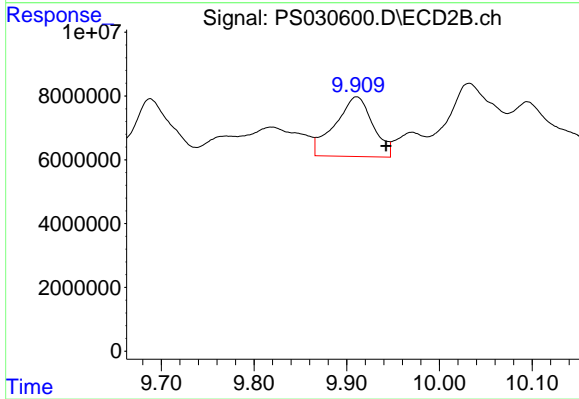
#10 Pentachlorophenol

R.T.: 9.597 min
 Delta R.T.: 0.034 min
 Response: 64261375
 Conc: 1.78 ng/ml



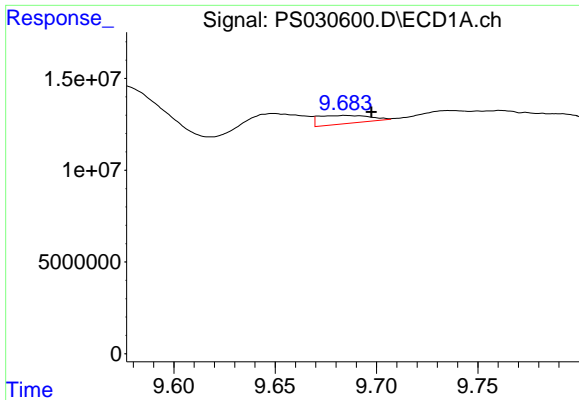
#11 2,4,5-TP (SILVEX)

R.T.: 9.436 min
 Delta R.T.: 0.033 min
 Response: 33343972
 Conc: 1.61 ng/ml



#11 2,4,5-TP (SILVEX)

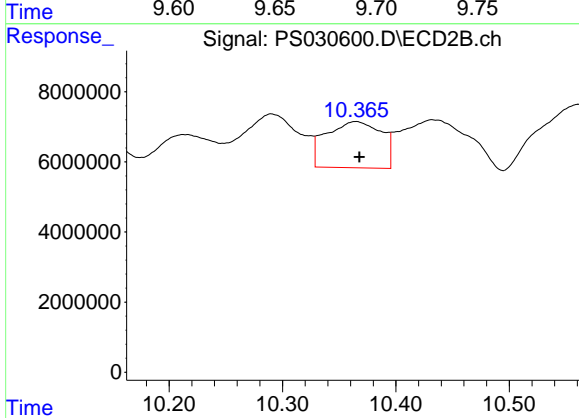
R.T.: 9.910 min
 Delta R.T.: -0.032 min
 Response: 53298609
 Conc: 3.89 ng/ml



#12 2,4,5-T

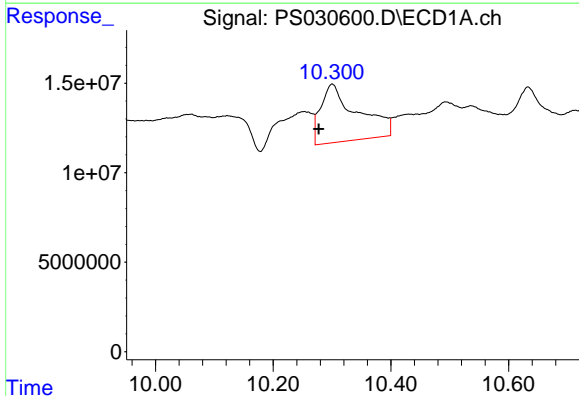
R.T.: 9.685 min
 Delta R.T.: -0.013 min
 Response: 7916753
 Conc: N.D.

Instrument :
 ECD_S
 ClientSampleId :
 BU-03-060525



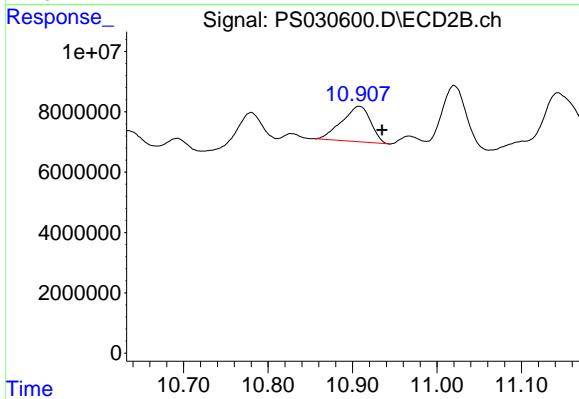
#12 2,4,5-T

R.T.: 10.365 min
 Delta R.T.: -0.003 min
 Response: 44556138
 Conc: 3.41 ng/ml



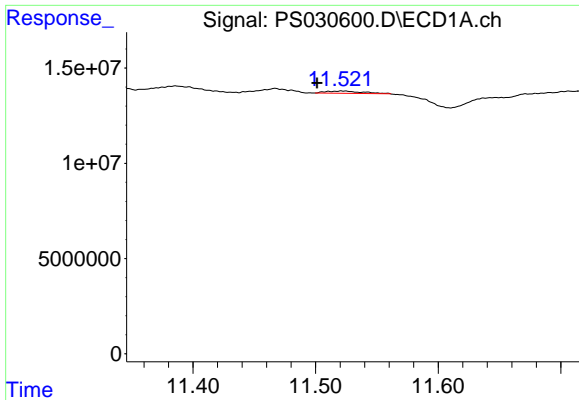
#13 2,4-DB

R.T.: 10.300 min
 Delta R.T.: 0.023 min
 Response: 139698055
 Conc: 46.01 ng/ml



#13 2,4-DB

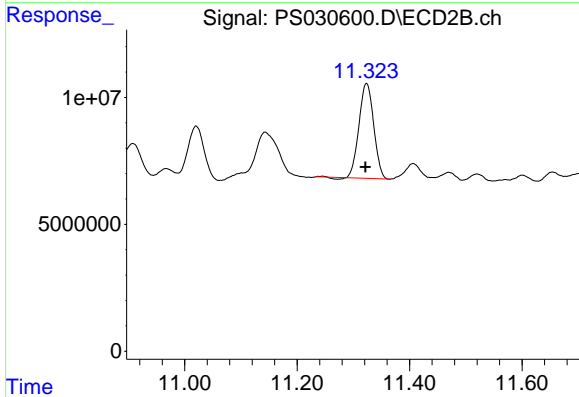
R.T.: 10.907 min
 Delta R.T.: -0.028 min
 Response: 27799468
 Conc: 24.18 ng/ml



#14 DINOSEB

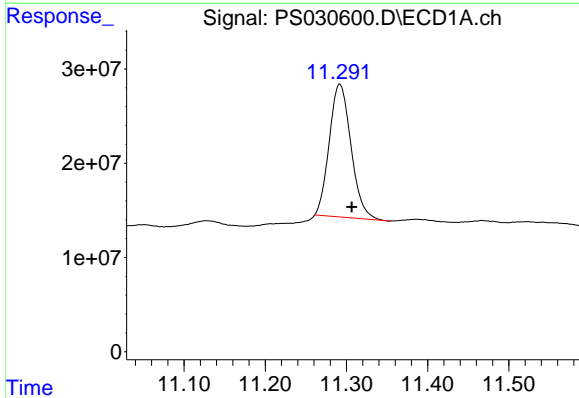
R.T.: 11.522 min
Delta R.T.: 0.020 min
Response: 2430027
Conc: N.D.

Instrument :
ECD_S
ClientSampleId :
BU-03-060525



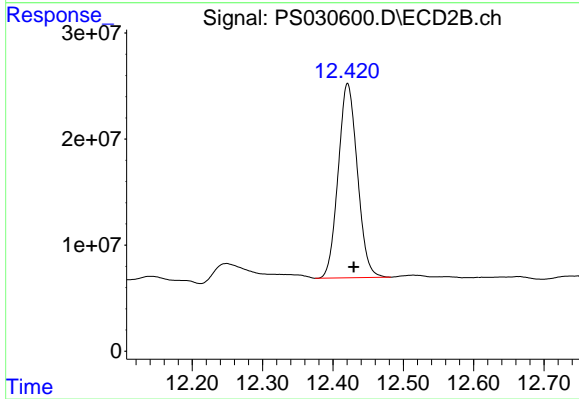
#14 DINOSEB

R.T.: 11.323 min
Delta R.T.: 0.002 min
Response: 67693062
Conc: 6.74 ng/ml



#15 Picloram

R.T.: 11.292 min
Delta R.T.: -0.015 min
Response: 262417858
Conc: 13.12 ng/ml



#15 Picloram

R.T.: 12.421 min
Delta R.T.: -0.009 min
Response: 347566454
Conc: 15.74 ng/ml