

Data Path : Z:\pestpcbsrv\HPCHEM1\ECD_S\Data\PS061025\
 Data File : PS030608.D
 Signal(s) : Signal #1: ECD1A.ch Signal #2: ECD2B.ch
 Acq On : 10 Jun 2025 21:37
 Operator : AR\AJ
 Sample : Q2266-01
 Misc :
 ALS Vial : 15 Sample Multiplier: 1

Instrument :
 ECD_S
 ClientSampleId :
 WC-3

Integration File signal 1: autoint1.e
 Integration File signal 2: autoint2.e
 Quant Time: Jun 11 01:39:11 2025
 Quant Method : Z:\pestpcbsrv\HPCHEM1\ECD_S\Method\PS060425.M
 Quant Title : 8080.M
 QLast Update : Wed Jun 04 13:21:22 2025
 Response via : Initial Calibration
 Integrator: ChemStation

Volume Inj. : 1 µl
 Signal #1 Phase : ZB-MR2 Signal #2 Phase: ZB-MR2
 Signal #1 Info : 30M x 0.32mm x0.5 Signal #2 Info : 30M x 0.32mm x 0.25µm

Compound	RT#1	RT#2	Resp#1	Resp#2	ng/ml	ng/ml
System Monitoring Compounds						
4) S 2,4-DCAA	7.358	7.769	1273.7E6	414.6E6	337.390	385.484
Target Compounds						
1) T Dalapon	2.689f	2.689	1536.6E6	1863.6E6	272.119	680.146 #
2) T 3,5-DICHL...	6.516	6.715	404.5E6	116.5E6	74.537	74.490
3) T 4-Nitroph...	7.196f	7.322	19249992	26496095	10.498	16.906 #
5) T DICAMBA	7.549	7.972	1322.6E6	597.7E6	85.759	92.782
6) T MCPP	7.728	8.068	24036339	6200339	2.427	2.682
7) T MCPA	7.878	8.350	70485521	20628610	5.555	6.685
8) T DICHLORPROP	8.265	8.692	390.4E6	171.0E6	107.311	115.239
9) T 2,4-D	8.498	9.027	358.0E6	150.5E6	98.258	95.740
10) T Pentachlo...	8.806	9.553	2065.0E6	1381.0E6	40.661	38.215
11) T 2,4,5-TP ...	9.388	9.942	1754.9E6	2998.1E6	84.920	218.575 #
12) T 2,4,5-T	9.682	10.360	1477.9E6	1264.5E6	80.184	96.840
13) T 2,4-DB	10.265	10.926	368.1E6	24056998	121.242	20.927 #
14) T DINOSEB	11.482	11.320	96763397	170.1E6	6.731	16.924 #
15) T Picloram	11.289	12.421	825.7E6	1059.3E6	41.275	47.967
16) T DCPA	11.775	12.357	1534.9E6	1870.4E6	58.051	91.404 #

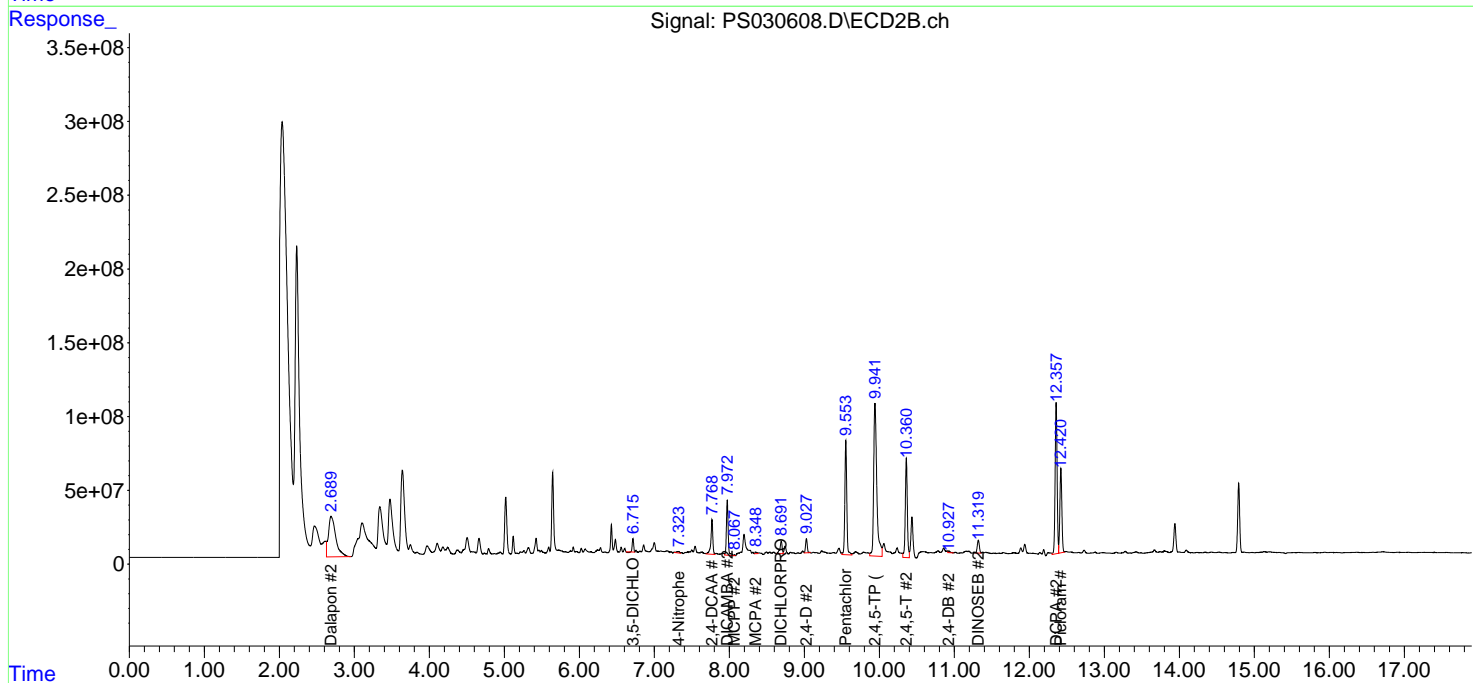
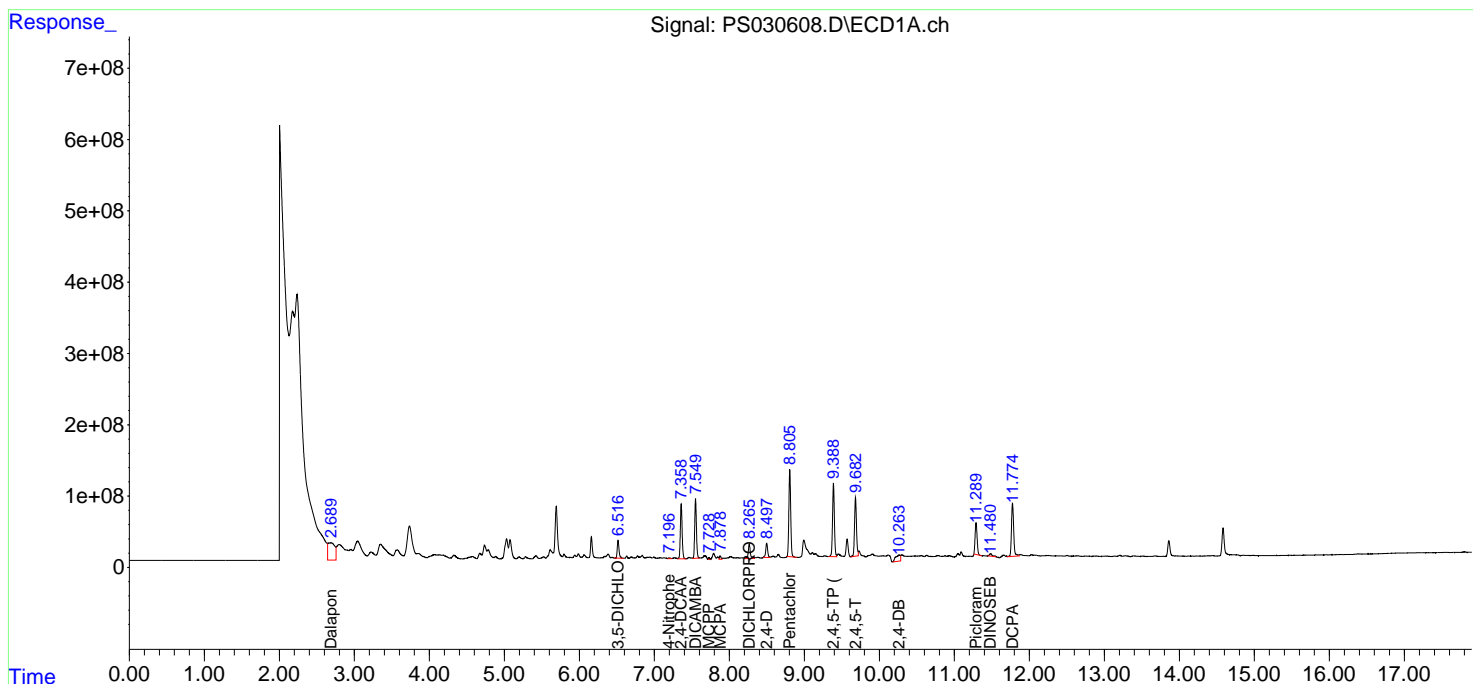
(f)=RT Delta > 1/2 Window (#)=Amounts differ by > 25% (m)=manual int.

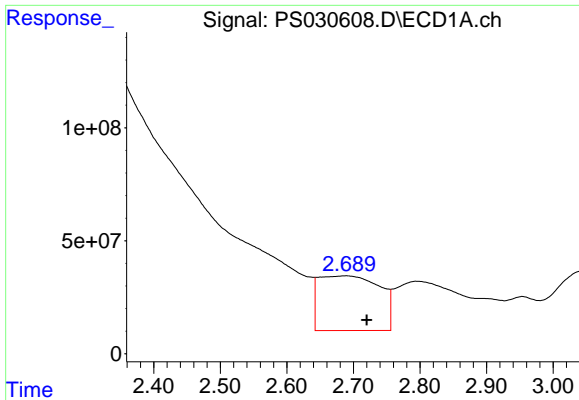
Data Path : Z:\pestpcbsrv\HPCHEM1\ECD_S\Data\PS061025\
 Data File : PS030608.D
 Signal(s) : Signal #1: ECD1A.ch Signal #2: ECD2B.ch
 Acq On : 10 Jun 2025 21:37
 Operator : AR\AJ
 Sample : Q2266-01
 Misc :
 ALS Vial : 15 Sample Multiplier: 1

Instrument :
 ECD_S
 ClientSampleId :
 WC-3

Integration File signal 1: autoint1.e
 Integration File signal 2: autoint2.e
 Quant Time: Jun 11 01:39:11 2025
 Quant Method : Z:\pestpcbsrv\HPCHEM1\ECD_S\Method\PS060425.M
 Quant Title : 8080.M
 QLast Update : Wed Jun 04 13:21:22 2025
 Response via : Initial Calibration
 Integrator: ChemStation

Volume Inj. : 1 µl
 Signal #1 Phase : ZB-MR1 Signal #2 Phase: ZB-MR2
 Signal #1 Info : 30M x 0.32mm x0.5 Signal #2 Info : 30M x 0.32mm x 0.25µm

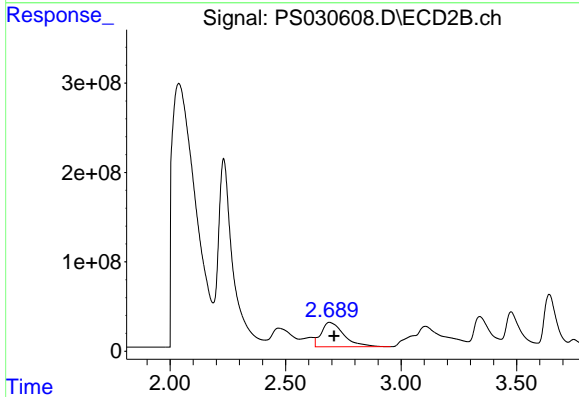




#1 Dalapon

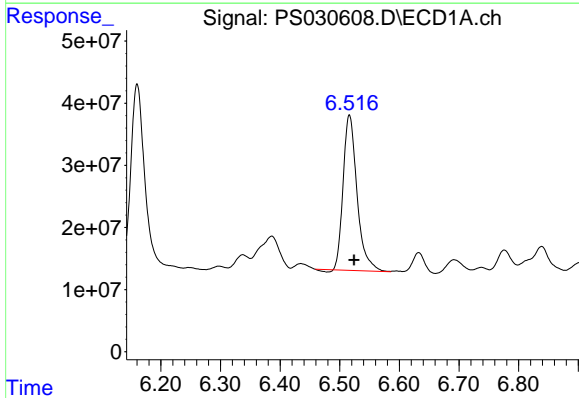
R.T.: 2.689 min
 Delta R.T.: -0.031 min
 Response: 1536646655
 Conc: 272.12 ng/ml

Instrument :
 ECD_S
 ClientSampleId :
 WC-3



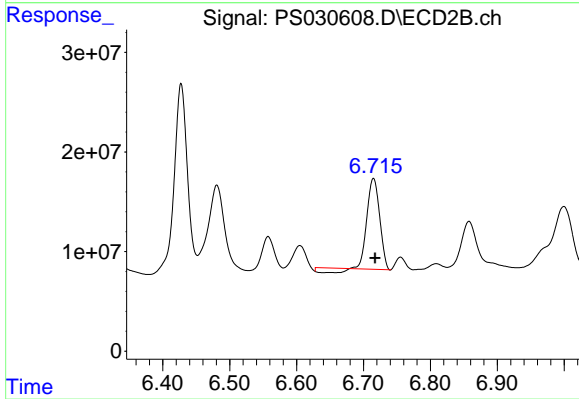
#1 Dalapon

R.T.: 2.689 min
 Delta R.T.: -0.021 min
 Response: 1863610882
 Conc: 680.15 ng/ml



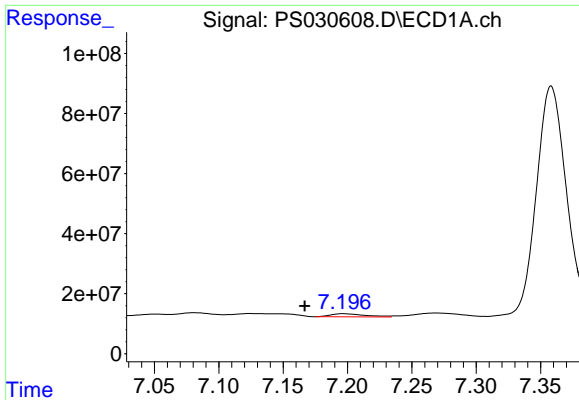
#2 3,5-DICHLOROBENZOIC ACID

R.T.: 6.516 min
 Delta R.T.: -0.008 min
 Response: 404465863
 Conc: 74.54 ng/ml



#2 3,5-DICHLOROBENZOIC ACID

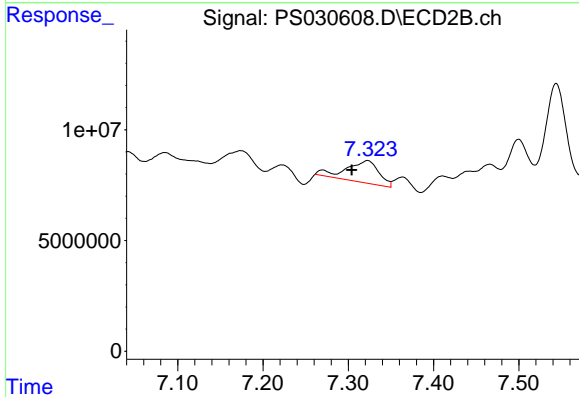
R.T.: 6.715 min
 Delta R.T.: -0.002 min
 Response: 116521171
 Conc: 74.49 ng/ml



#3 4-Nitrophenol

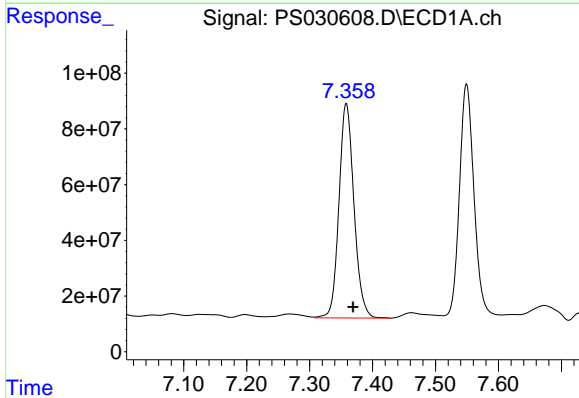
R.T.: 7.196 min
 Delta R.T.: 0.030 min
 Response: 19249992
 Conc: 10.50 ng/ml

Instrument :
 ECD_S
 ClientSampleId :
 WC-3



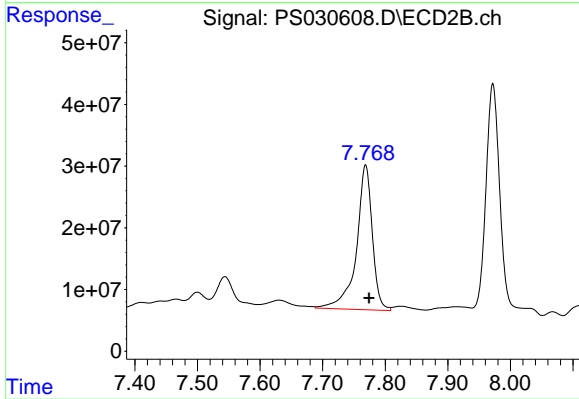
#3 4-Nitrophenol

R.T.: 7.322 min
 Delta R.T.: 0.018 min
 Response: 26496095
 Conc: 16.91 ng/ml



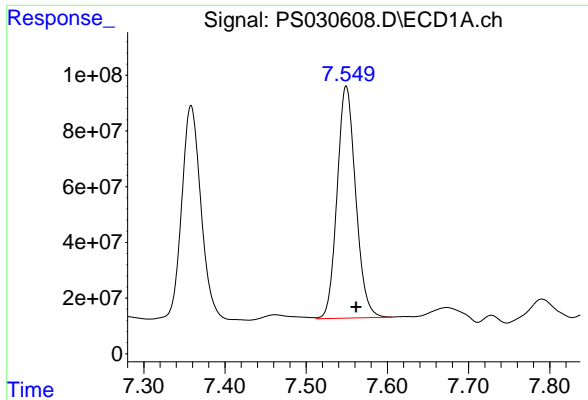
#4 2,4-DCAA

R.T.: 7.358 min
 Delta R.T.: -0.011 min
 Response: 1273695372
 Conc: 337.39 ng/ml



#4 2,4-DCAA

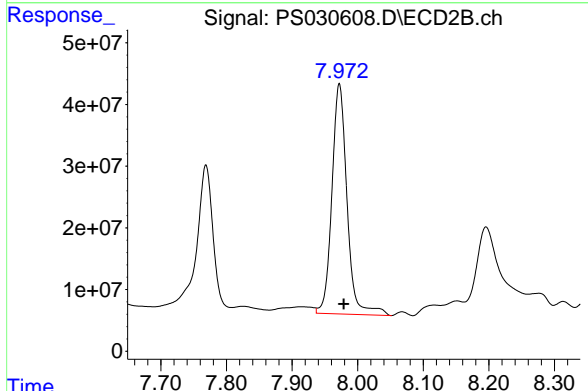
R.T.: 7.769 min
 Delta R.T.: -0.006 min
 Response: 414630152
 Conc: 385.48 ng/ml



#5 DICAMBA

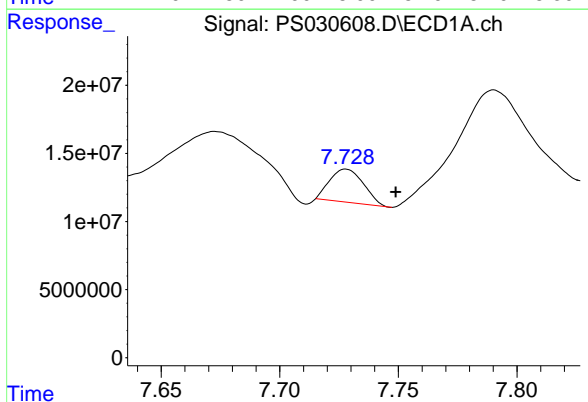
R.T.: 7.549 min
 Delta R.T.: -0.012 min
 Response: 1322623725
 Conc: 85.76 ng/ml

Instrument :
 ECD_S
 ClientSampleId :
 WC-3



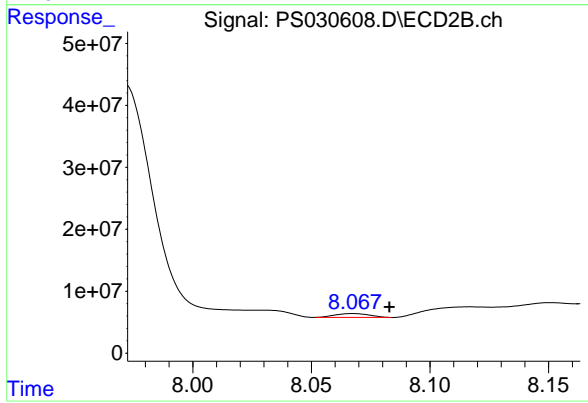
#5 DICAMBA

R.T.: 7.972 min
 Delta R.T.: -0.006 min
 Response: 597668452
 Conc: 92.78 ng/ml



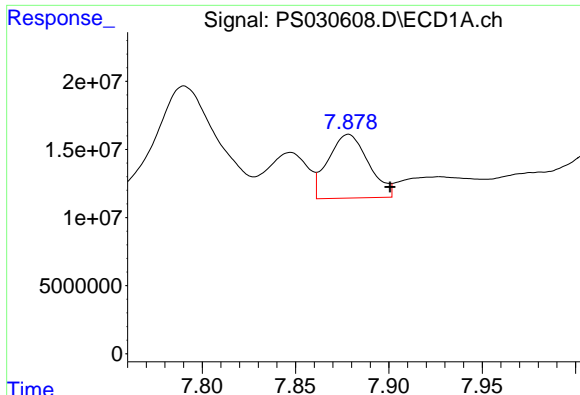
#6 MCPP

R.T.: 7.728 min
 Delta R.T.: -0.021 min
 Response: 24036339
 Conc: 2.43 ug/ml



#6 MCPP

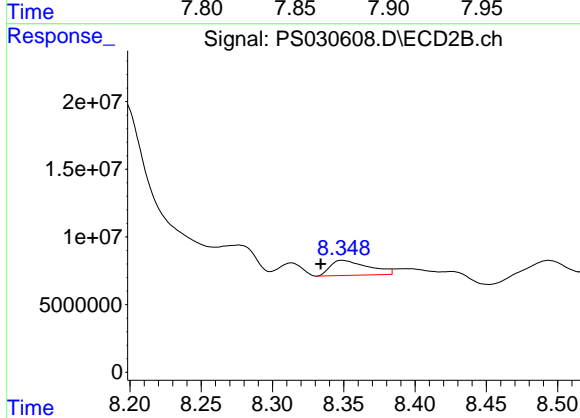
R.T.: 8.068 min
 Delta R.T.: -0.015 min
 Response: 6200339
 Conc: 2.68 ug/ml



#7 MCPA

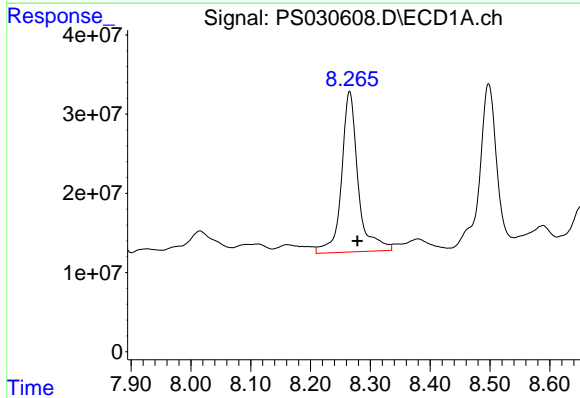
R.T.: 7.878 min
 Delta R.T.: -0.022 min
 Response: 70485521
 Conc: 5.55 ug/ml

Instrument :
 ECD_S
 ClientSampleId :
 WC-3



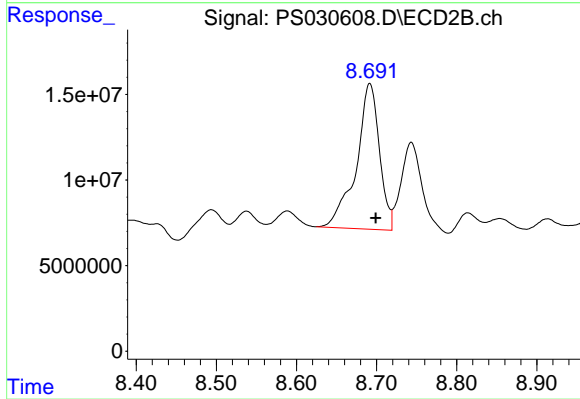
#7 MCPA

R.T.: 8.350 min
 Delta R.T.: 0.016 min
 Response: 20628610
 Conc: 6.68 ug/ml



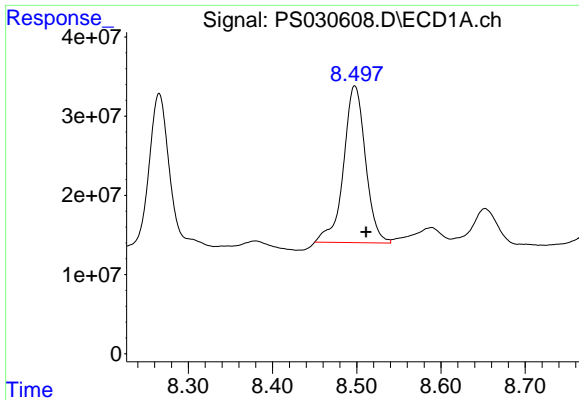
#8 DICHLORPROP

R.T.: 8.265 min
 Delta R.T.: -0.013 min
 Response: 390413717
 Conc: 107.31 ng/ml



#8 DICHLORPROP

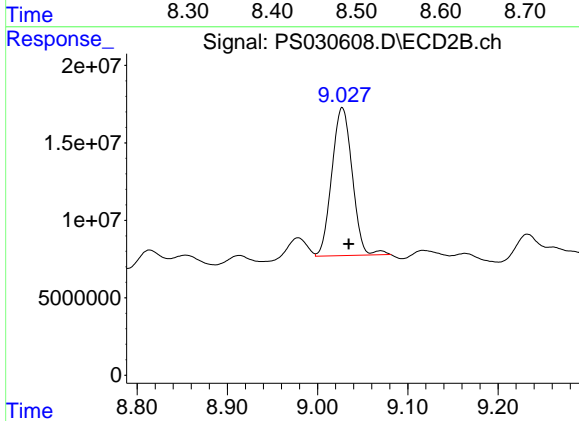
R.T.: 8.692 min
 Delta R.T.: -0.007 min
 Response: 171038686
 Conc: 115.24 ng/ml



#9 2,4-D

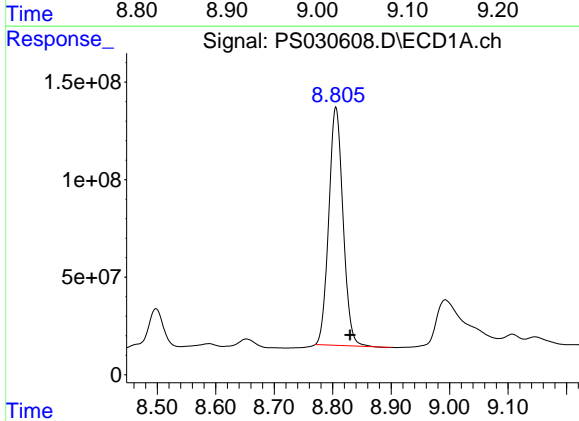
R.T.: 8.498 min
 Delta R.T.: -0.013 min
 Response: 358013855
 Conc: 98.26 ng/ml

Instrument :
 ECD_S
 ClientSampleId :
 WC-3



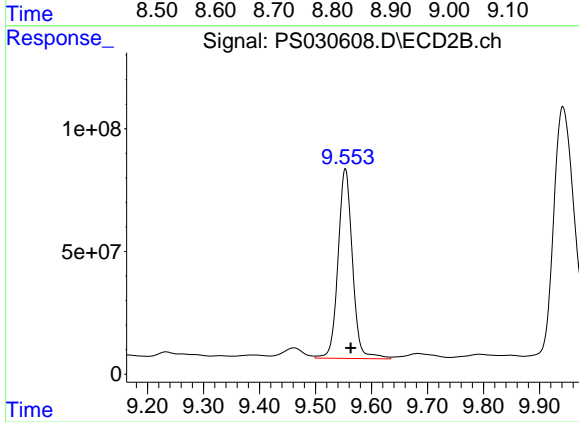
#9 2,4-D

R.T.: 9.027 min
 Delta R.T.: -0.007 min
 Response: 150534067
 Conc: 95.74 ng/ml



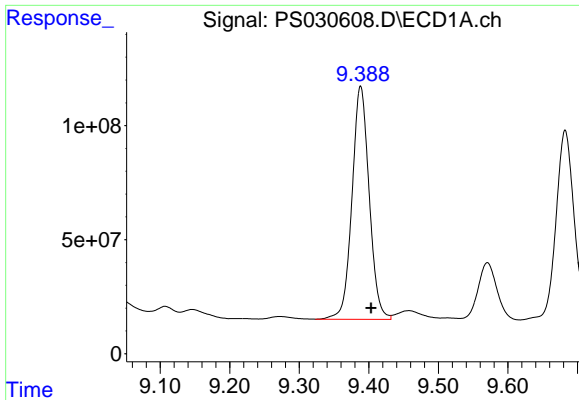
#10 Pentachlorophenol

R.T.: 8.806 min
 Delta R.T.: -0.024 min
 Response: 2065033292
 Conc: 40.66 ng/ml



#10 Pentachlorophenol

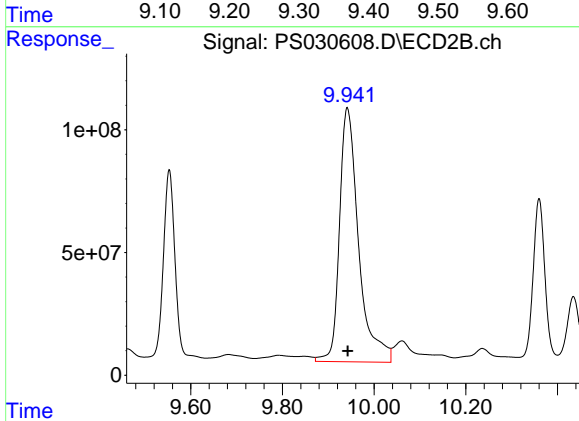
R.T.: 9.553 min
 Delta R.T.: -0.010 min
 Response: 1381018965
 Conc: 38.22 ng/ml



#11 2,4,5-TP (SILVEX)

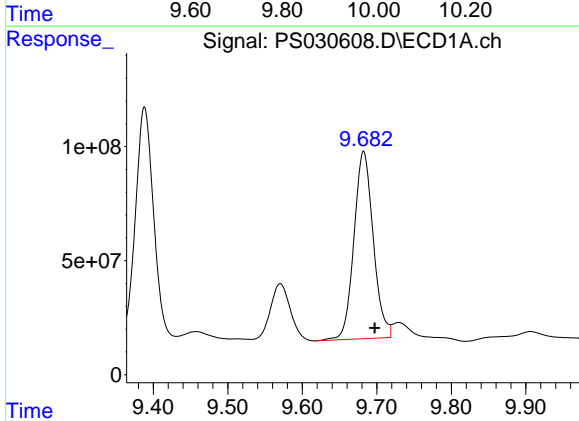
R.T.: 9.388 min
 Delta R.T.: -0.015 min
 Response: 1754886734
 Conc: 84.92 ng/ml

Instrument :
 ECD_S
 ClientSampleId :
 WC-3



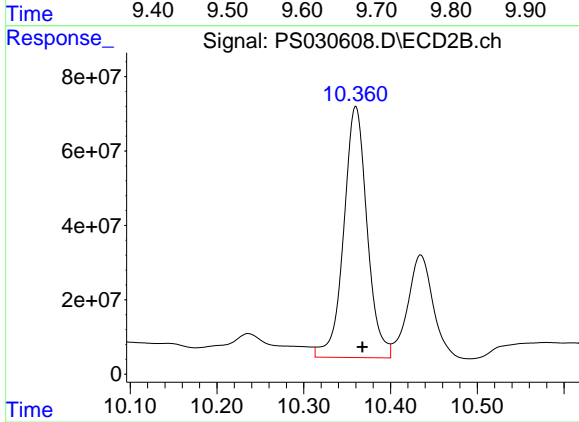
#11 2,4,5-TP (SILVEX)

R.T.: 9.942 min
 Delta R.T.: 0.000 min
 Response: 2998139959
 Conc: 218.58 ng/ml



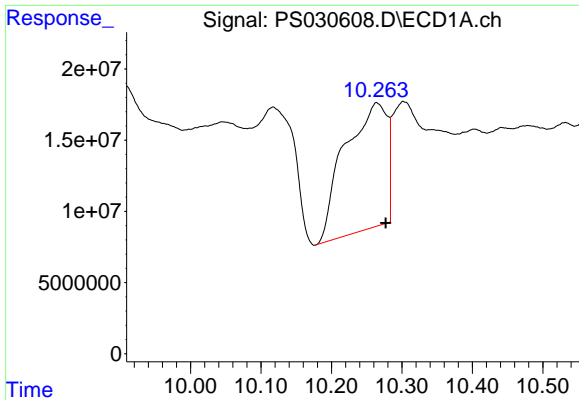
#12 2,4,5-T

R.T.: 9.682 min
 Delta R.T.: -0.015 min
 Response: 1477880255
 Conc: 80.18 ng/ml



#12 2,4,5-T

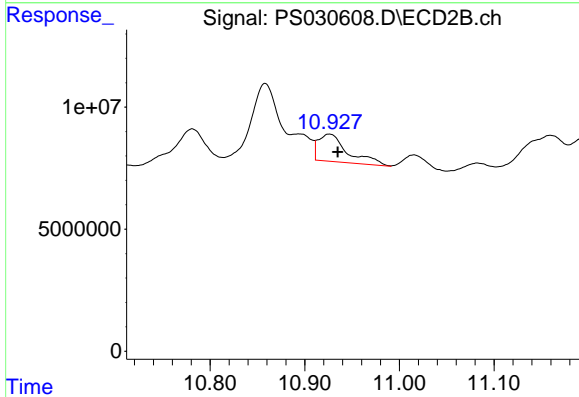
R.T.: 10.360 min
 Delta R.T.: -0.008 min
 Response: 1264451599
 Conc: 96.84 ng/ml



#13 2,4-DB

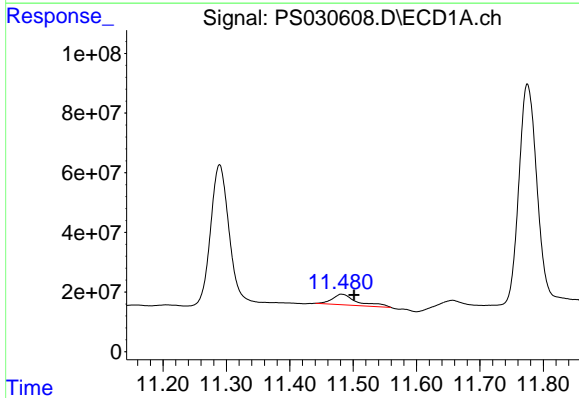
R.T.: 10.265 min
 Delta R.T.: -0.013 min
 Response: 368133747
 Conc: 121.24 ng/ml

Instrument :
 ECD_S
 ClientSampleId :
 WC-3



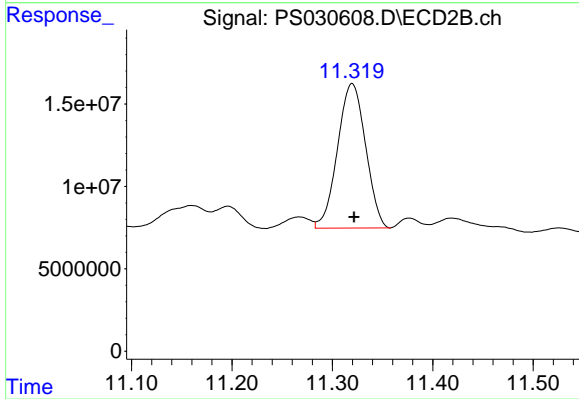
#13 2,4-DB

R.T.: 10.926 min
 Delta R.T.: -0.009 min
 Response: 24056998
 Conc: 20.93 ng/ml



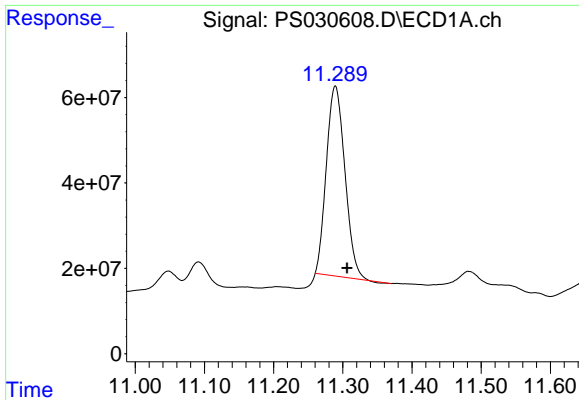
#14 DINOSEB

R.T.: 11.482 min
 Delta R.T.: -0.019 min
 Response: 96763397
 Conc: 6.73 ng/ml



#14 DINOSEB

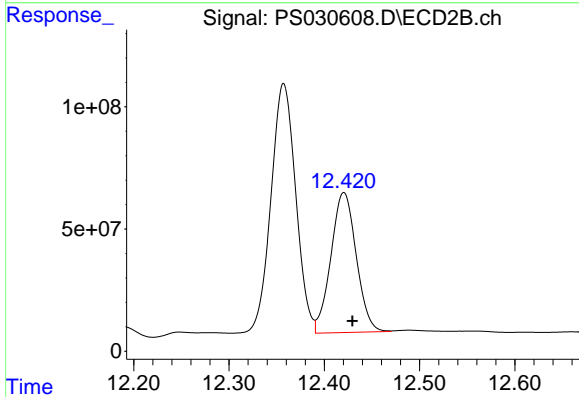
R.T.: 11.320 min
 Delta R.T.: -0.002 min
 Response: 170087484
 Conc: 16.92 ng/ml



#15 Picloram

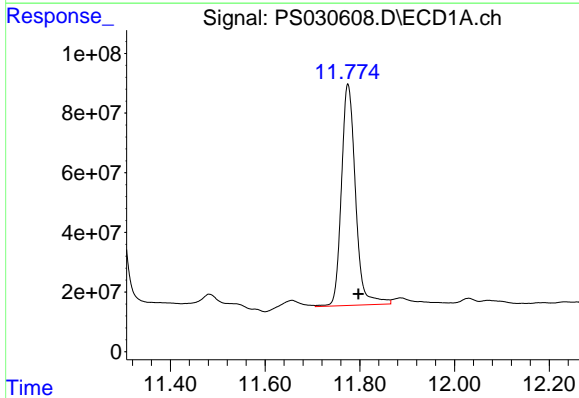
R.T.: 11.289 min
 Delta R.T.: -0.017 min
 Response: 825696712
 Conc: 41.27 ng/ml

Instrument :
 ECD_S
 ClientSampleId :
 WC-3



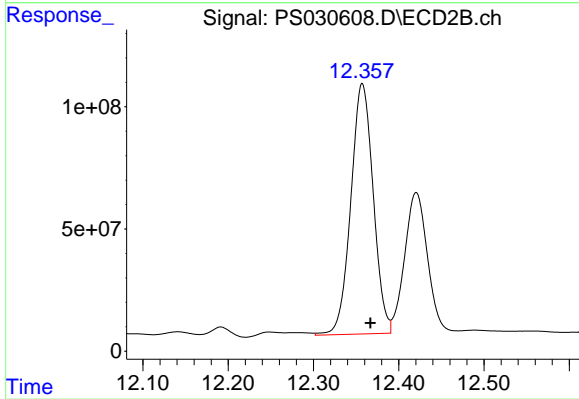
#15 Picloram

R.T.: 12.421 min
 Delta R.T.: -0.009 min
 Response: 1059296109
 Conc: 47.97 ng/ml



#16 DCPA

R.T.: 11.775 min
 Delta R.T.: -0.022 min
 Response: 1534872261
 Conc: 58.05 ng/ml



#16 DCPA

R.T.: 12.357 min
 Delta R.T.: -0.009 min
 Response: 1870386244
 Conc: 91.40 ng/ml