

Data Path : Z:\pestpcbsrv\HPCHEM1\ECD_S\Data\PS061119\
 Data File : PS005003.D
 Signal(s) : Signal #1: ECD1A.ch Signal #2: ECD2B.ch
 Acq On : 11 Jun 2019 21:53
 Operator : SM\AJ
 Sample : K3262-01
 Misc :
 ALS Vial : 19 Sample Multiplier: 1

Instrument :
 ECD_S
 ClientSampleId :

Integration File signal 1: autoint1.e
 Integration File signal 2: autoint2.e
 Quant Time: Jun 12 01:19:38 2019
 Quant Method : Z:\pestpcbsrv\HPCHEM1\ECD_S\Method\PS052019.M
 Quant Title : 8080.M
 QLast Update : Tue May 21 04:53:35 2019
 Response via : Initial Calibration
 Integrator: ChemStation

Volume Inj. : 2 µl
 Signal #1 Phase : Rtx-CLPesticides Signal #2 Phase: Rtx-CLPesticides2
 Signal #1 Info : 30M x 0.32mm x0.5 Signal #2 Info : 30M x 0.32mm x 0.25µm

Compound	RT#1	RT#2	Resp#1	Resp#2	ng/ml	ng/ml

System Monitoring Compounds						
4) S 2,4-DCAA	5.590	5.302	422.0E6	275.0E6	301.022	285.022
Target Compounds						
1) T Dalapon	2.093	0.000	28765459	0	17.353	N.D. #
2) T 3,5-DICHL...	0.000	4.580	0	11085881	N.D.	8.997
3) T 4-Nitroph...	5.381	0.000	27699194	0	44.425	N.D. #
5) T DICAMBA	5.729	5.408	15186592	18907418	2.860	5.118 #
6) T MCPP	5.944	0.000	11794515	0	2.833	N.D. #
7) T MCPA	6.024	5.764	74457793	192.5E6	12.855	47.036 #
9) T 2,4-D	6.676	0.000	64471007	0	47.131	N.D. #
11) T 2,4,5-TP ...	0.000	6.958	0	206.4E6	N.D.	40.121

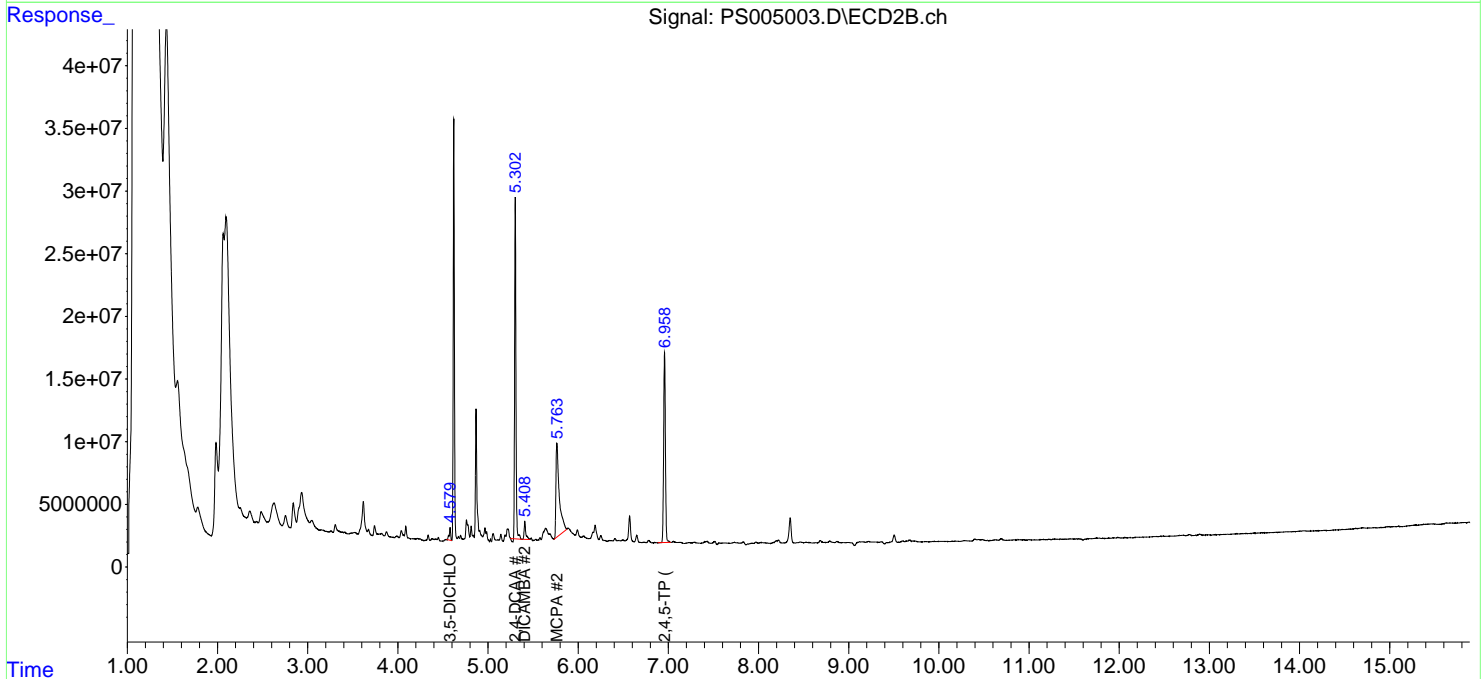
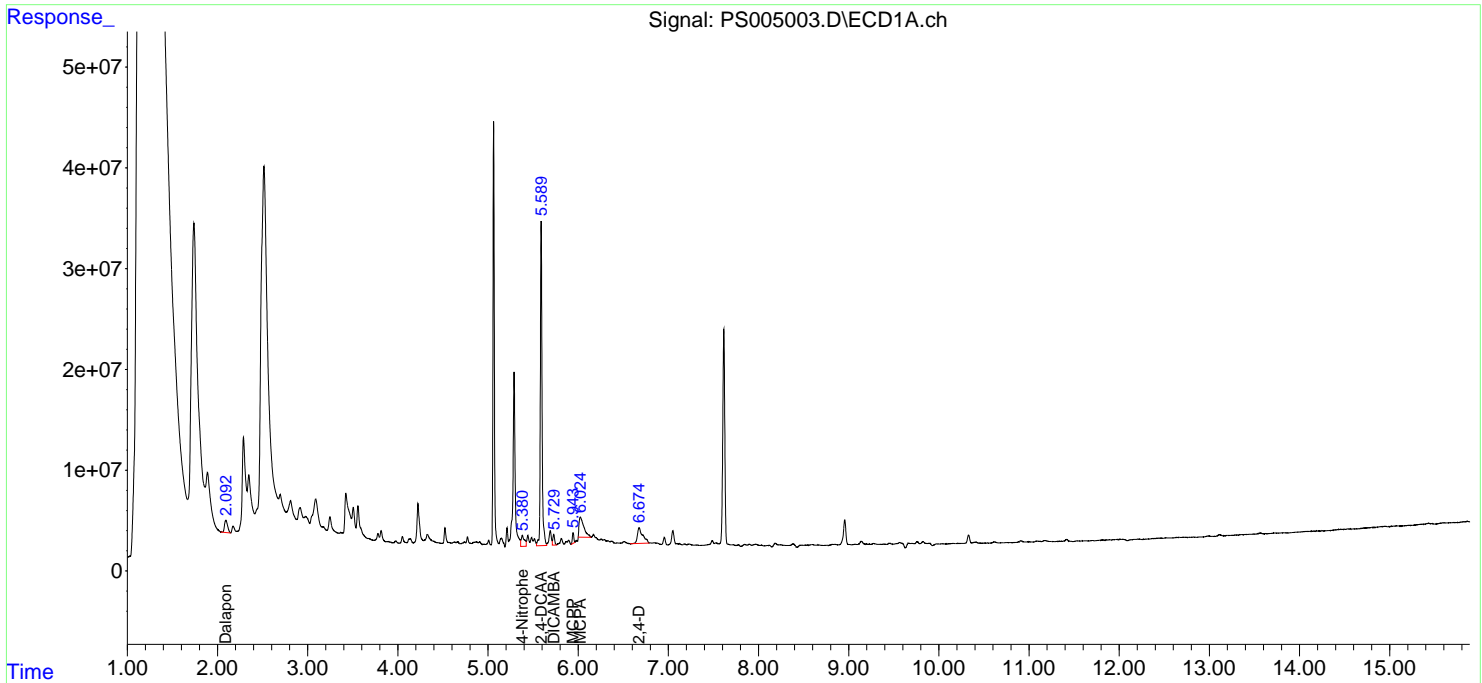
(f)=RT Delta > 1/2 Window (#)=Amounts differ by > 25% (m)=manual int.

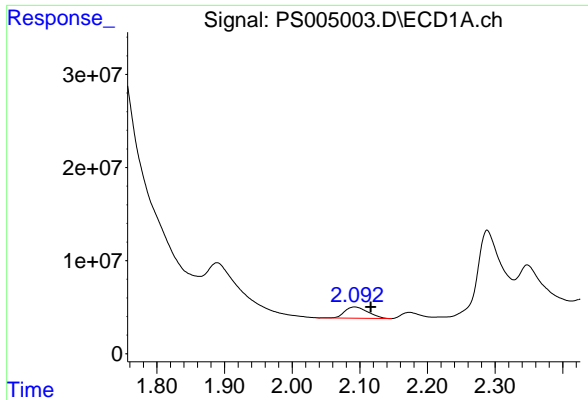
Data Path : Z:\pestpcbsrv\HPCHEM1\ECD_S\Data\PS061119\
 Data File : PS005003.D
 Signal(s) : Signal #1: ECD1A.ch Signal #2: ECD2B.ch
 Acq On : 11 Jun 2019 21:53
 Operator : SM\AJ
 Sample : K3262-01
 Misc :
 ALS Vial : 19 Sample Multiplier: 1

Instrument :
 ECD_S
 ClientSampleId :

Integration File signal 1: autoint1.e
 Integration File signal 2: autoint2.e
 Quant Time: Jun 12 01:19:38 2019
 Quant Method : Z:\pestpcbsrv\HPCHEM1\ECD_S\Method\PS052019.M
 Quant Title : 8080.M
 QLast Update : Tue May 21 04:53:35 2019
 Response via : Initial Calibration
 Integrator: ChemStation

Volume Inj. : 2 µl
 Signal #1 Phase : Rtx-CLPesticides Signal #2 Phase: Rtx-CLPesticides2
 Signal #1 Info : 30M x 0.32mm x0.5 Signal #2 Info : 30M x 0.32mm x 0.25µm

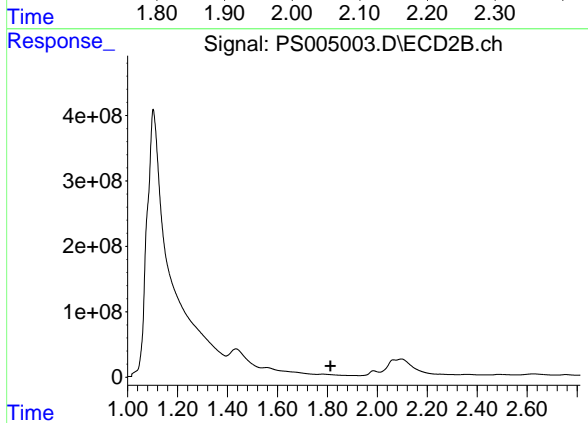




#1 Dalapon

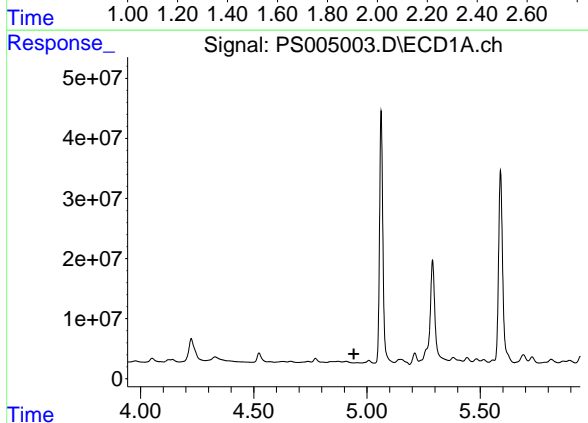
R.T.: 2.093 min
 Delta R.T.: -0.023 min
 Response: 28765459
 Conc: 17.35 ng/ml

Instrument :
 ECD_S
 ClientSampleId :



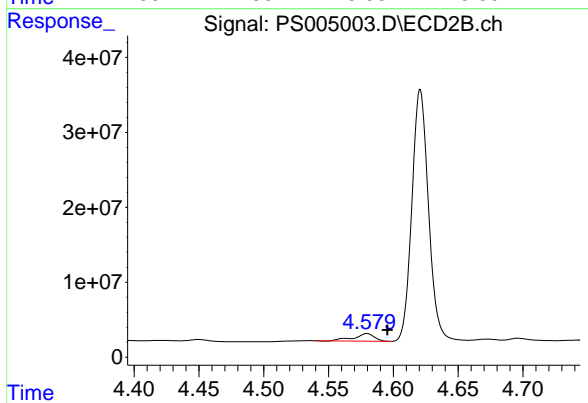
#1 Dalapon

R.T.: 0.000 min
 Exp R.T. : 1.813 min
 Response: 0
 Conc: N.D.



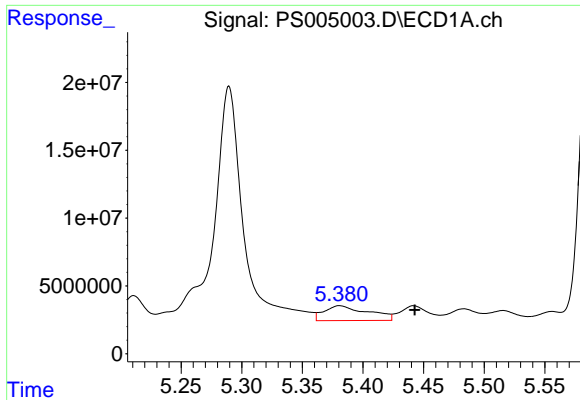
#2 3,5-DICHLOROBENZOIC ACID

R.T.: 0.000 min
 Exp R.T. : 4.942 min
 Response: 0
 Conc: N.D.



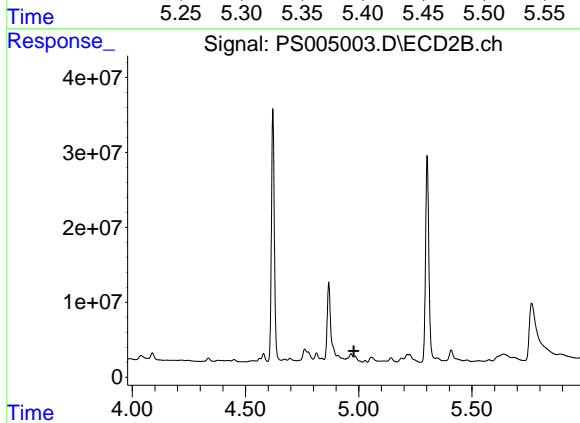
#2 3,5-DICHLOROBENZOIC ACID

R.T.: 4.580 min
 Delta R.T.: -0.016 min
 Response: 11085881
 Conc: 9.00 ng/ml

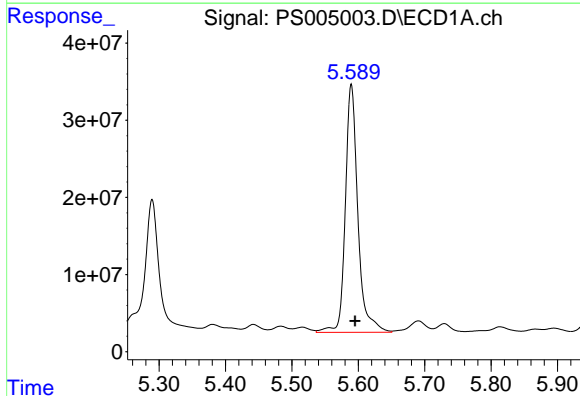


#3 4-Nitrophenol
 R.T.: 5.381 min
 Delta R.T.: -0.062 min
 Response: 27699194
 Conc: 44.42 ng/ml

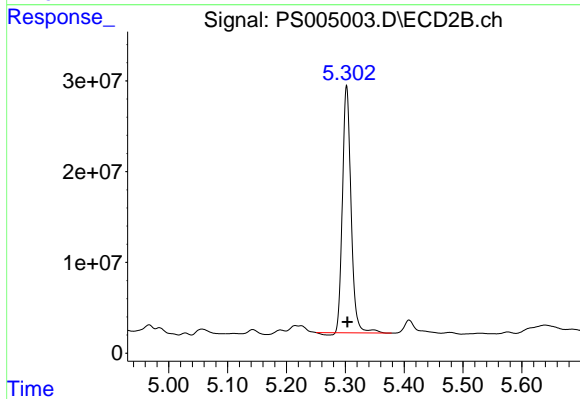
Instrument :
 ECD_S
 ClientSampleId :



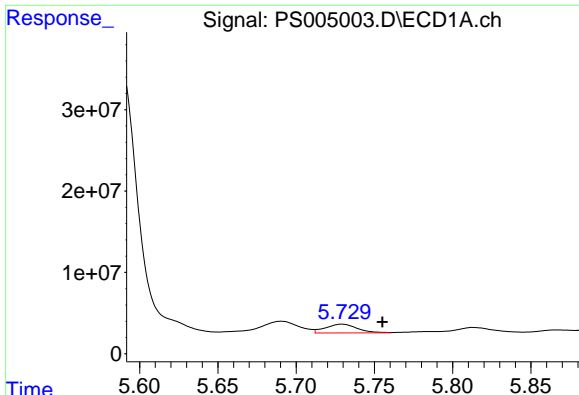
#3 4-Nitrophenol
 R.T.: 0.000 min
 Exp R.T. : 4.979 min
 Response: 0
 Conc: N.D.



#4 2,4-DCAA
 R.T.: 5.590 min
 Delta R.T.: -0.006 min
 Response: 421959617
 Conc: 301.02 ng/ml



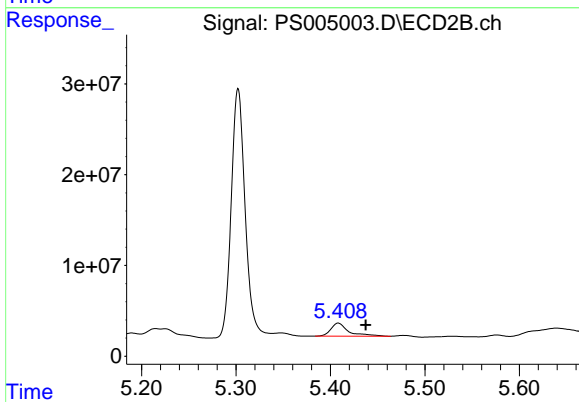
#4 2,4-DCAA
 R.T.: 5.302 min
 Delta R.T.: -0.001 min
 Response: 274999329
 Conc: 285.02 ng/ml



#5 DICAMBA

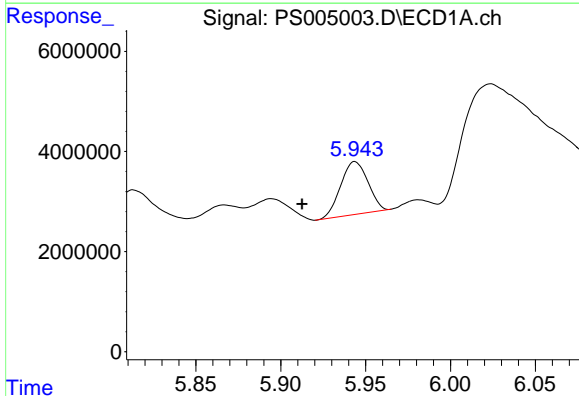
R.T.: 5.729 min
 Delta R.T.: -0.026 min
 Response: 15186592
 Conc: 2.86 ng/ml

Instrument :
 ECD_S
 ClientSampled :



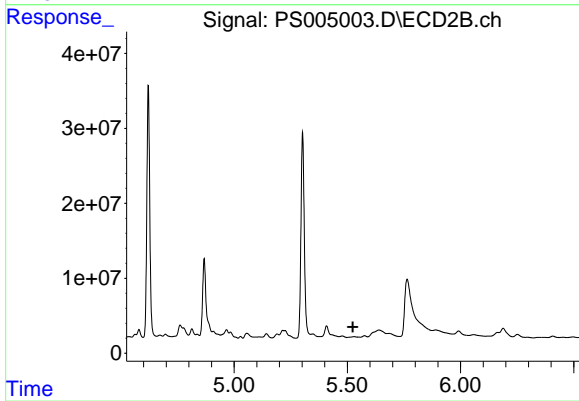
#5 DICAMBA

R.T.: 5.408 min
 Delta R.T.: -0.029 min
 Response: 18907418
 Conc: 5.12 ng/ml



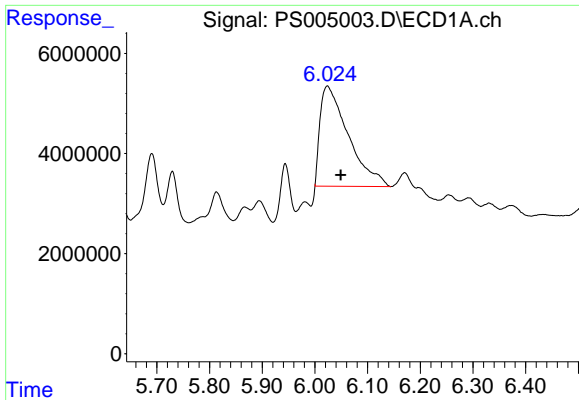
#6 MCPP

R.T.: 5.944 min
 Delta R.T.: 0.031 min
 Response: 11794515
 Conc: 2.83 ug/ml



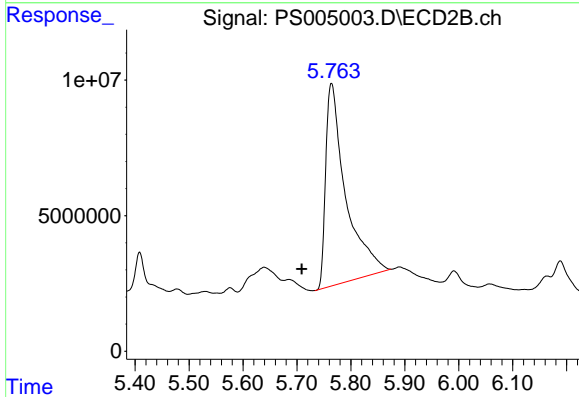
#6 MCPP

R.T.: 0.000 min
 Exp R.T. : 5.524 min
 Response: 0
 Conc: N.D.

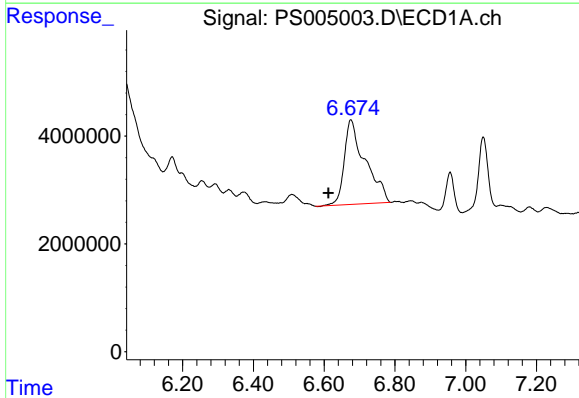


#7 MCPA
 R.T.: 6.024 min
 Delta R.T.: -0.025 min
 Response: 74457793
 Conc: 12.85 ug/ml

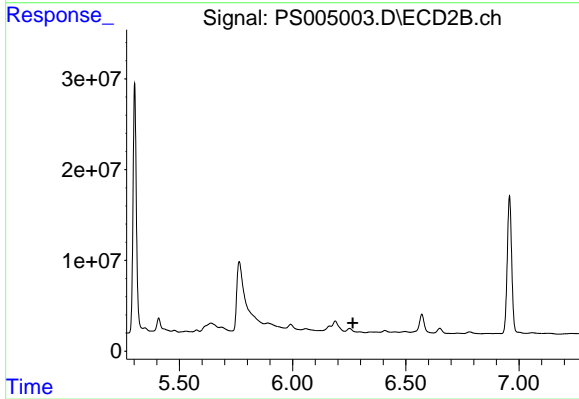
Instrument :
 ECD_S
 ClientSampled :



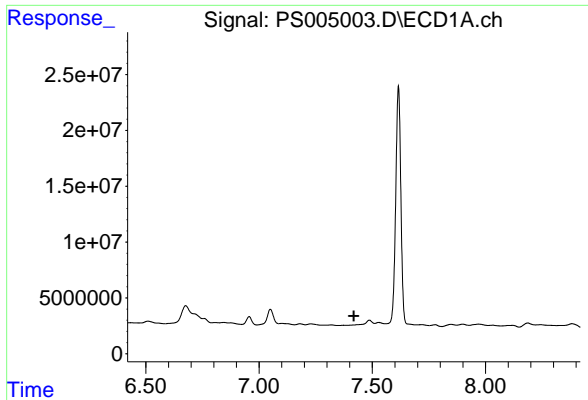
#7 MCPA
 R.T.: 5.764 min
 Delta R.T.: 0.055 min
 Response: 192453401
 Conc: 47.04 ug/ml



#9 2,4-D
 R.T.: 6.676 min
 Delta R.T.: 0.064 min
 Response: 64471007
 Conc: 47.13 ng/ml



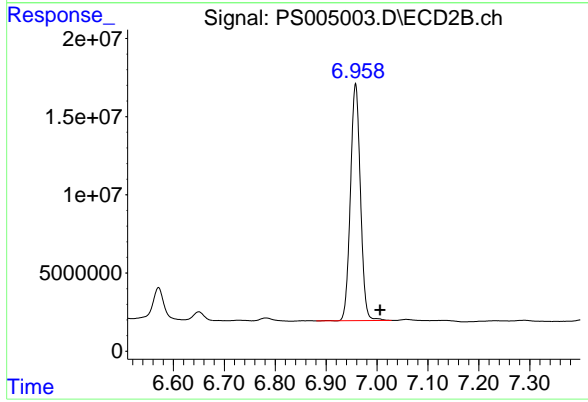
#9 2,4-D
 R.T.: 0.000 min
 Exp R.T. : 6.266 min
 Response: 0
 Conc: N.D.



#11 2,4,5-TP (SILVEX)

R.T.: 0.000 min
Exp R.T.: 7.419 min
Response: 0
Conc: N.D.

Instrument :
ECD_S
ClientSampleId :



#11 2,4,5-TP (SILVEX)

R.T.: 6.958 min
Delta R.T.: -0.048 min
Response: 206437856
Conc: 40.12 ng/ml