

Data Path : Z:\pestpcbsrv\HPCHEM1\ECD\_S\Data\PS061119\  
 Data File : PS005007.D  
 Signal(s) : Signal #1: ECD1A.ch Signal #2: ECD2B.ch  
 Acq On : 12 Jun 2019 01:52  
 Operator : SM\AJ  
 Sample : HSTDCCC750  
 Misc :  
 ALS Vial : 3 Sample Multiplier: 1

Instrument :  
 ECD\_S  
 ClientSampleId :

Integration File signal 1: autoint1.e  
 Integration File signal 2: autoint2.e  
 Quant Time: Jun 12 03:37:39 2019  
 Quant Method : Z:\pestpcbsrv\HPCHEM1\ECD\_S\Method\PS052019.M  
 Quant Title : 8080.M  
 QLast Update : Tue May 21 04:53:35 2019  
 Response via : Initial Calibration  
 Integrator: ChemStation

Volume Inj. : 2 µl  
 Signal #1 Phase : Rtx-CLPesticides Signal #2 Phase: Rtx-CLPesticides2  
 Signal #1 Info : 30M x 0.32mm x0.5 Signal #2 Info : 30M x 0.32mm x 0.25µm

	Compound	RT#1	RT#2	Resp#1	Resp#2	ng/ml	ng/ml
-----							
System Monitoring Compounds							
4) S	2,4-DCAA	5.572	5.285	1088.5E6	737.8E6	776.524	764.686
Target Compounds							
1) T	Dalapon	2.104	1.800	1129.3E6	796.2E6	681.232	617.001
2) T	3,5-DICHL...	4.921	4.578	1280.2E6	876.2E6	742.358	711.128
3) T	4-Nitroph...	5.417	4.960	457.8E6	331.4E6	734.247	699.295
5) T	DICAMBA	5.733	5.419	3933.5E6	2655.1E6	740.820	718.707
6) T	MCP P	5.894	5.509	313.5E6	199.6E6	75.314	72.857
7) T	MCPA	6.032	5.695	433.7E6	289.0E6	74.879	70.637
8) T	DICHLORPROP	6.372	5.975	941.7E6	672.2E6	719.525	712.956
9) T	2,4-D	6.586	6.247	1014.5E6	764.6E6	741.637	707.386
10) T	Pentachlo...	6.860	6.626	13214.3E6	8876.3E6	752.489	722.536
11) T	2,4,5-TP ...	7.397	6.987	5499.2E6	3694.0E6	750.685	717.925
12) T	2,4,5-T	7.669	7.385	5434.8E6	3098.9E6	729.745	695.319
13) T	2,4-DB	8.201	7.837	761.4E6	469.4E6	788.202	718.203
14) T	DINOSEB	9.305	8.153	4333.5E6	2726.8E6	732.628	709.352
15) T	Picloram	9.129	9.094	7255.2E6	4872.5E6	696.279	653.108
16) T	DCPA	9.576	9.054	6755.3E6	4749.9E6	758.502	733.232
-----							

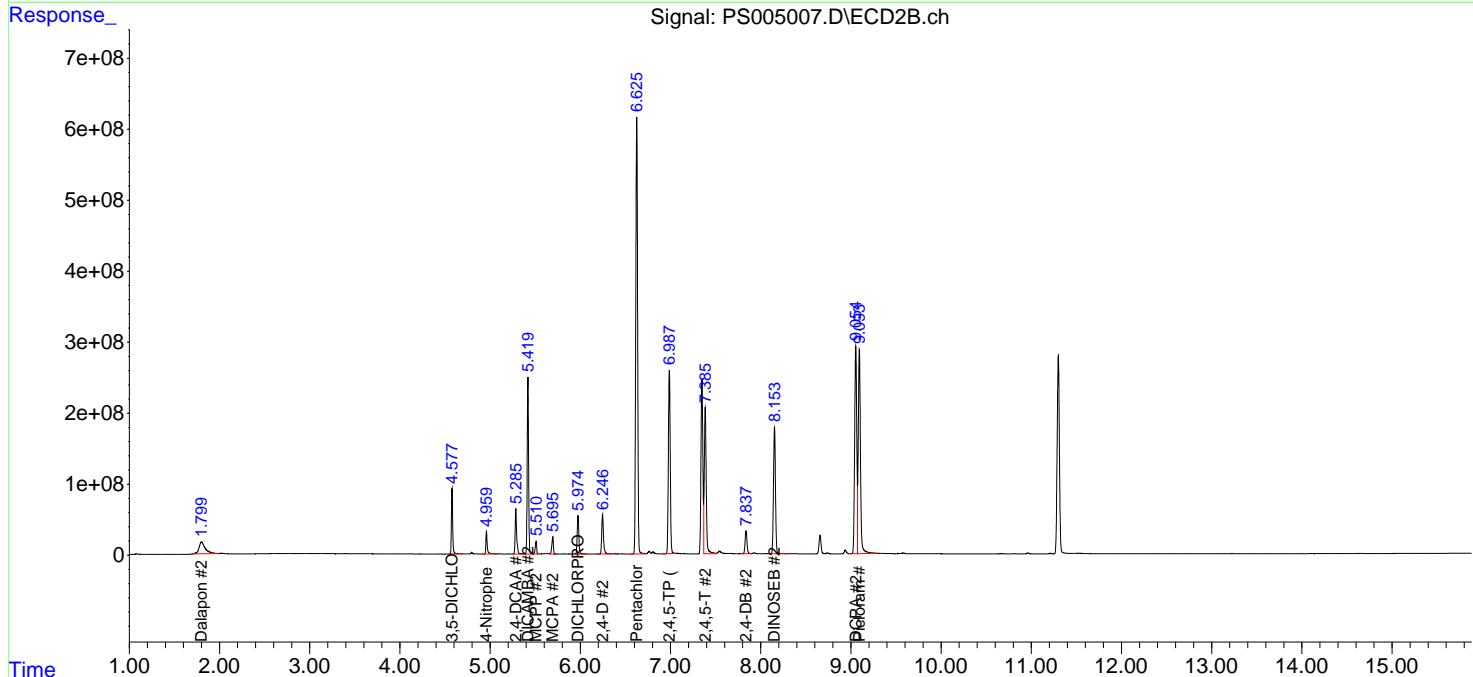
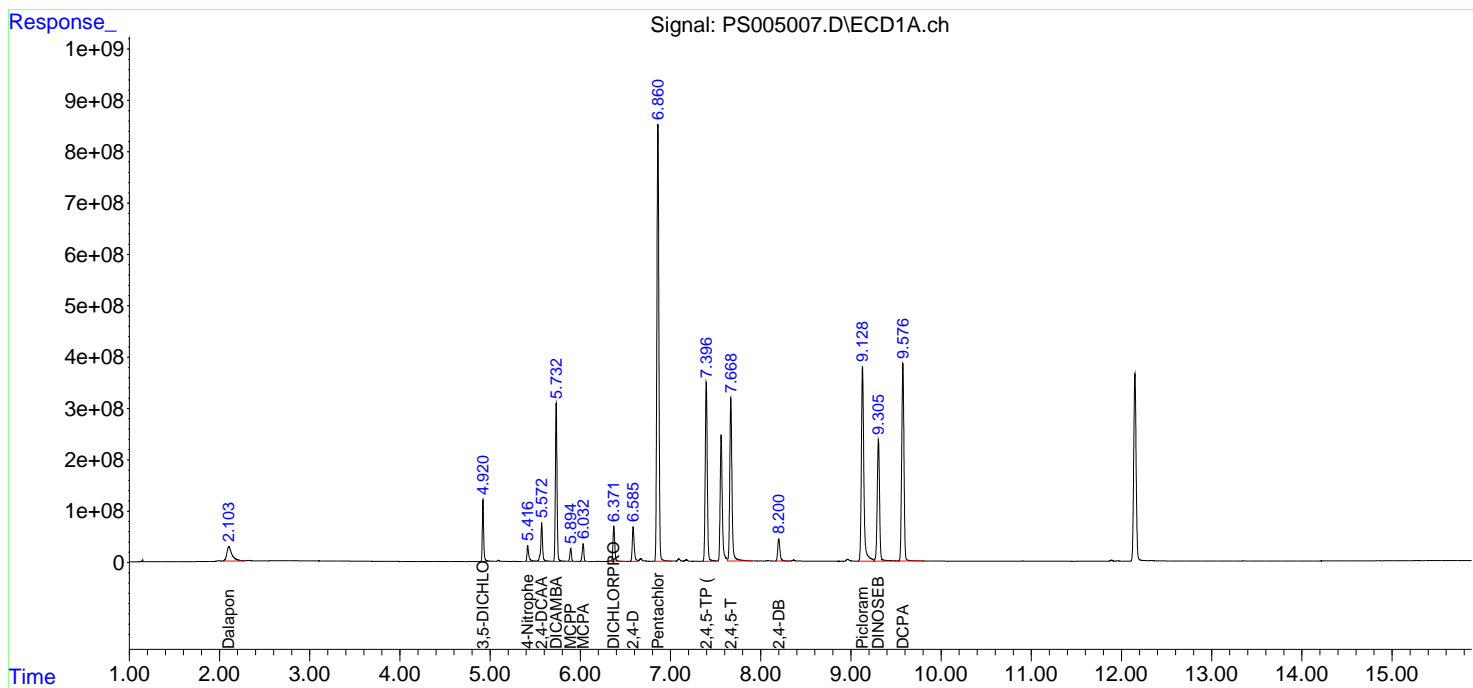
(f)=RT Delta > 1/2 Window (#)=Amounts differ by > 25% (m)=manual int.

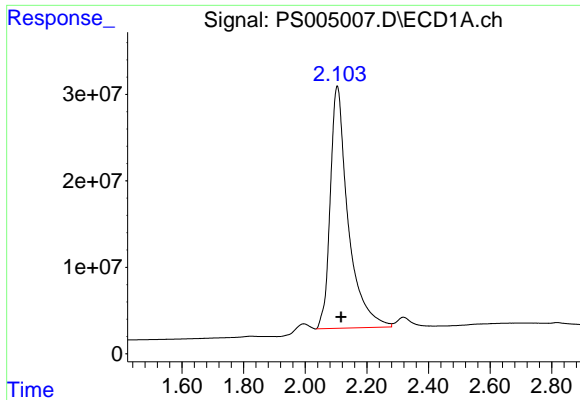
Data Path : Z:\pestpcbsrv\HPCHEM1\ECD\_S\Data\PS061119\  
 Data File : PS005007.D  
 Signal(s) : Signal #1: ECD1A.ch Signal #2: ECD2B.ch  
 Acq On : 12 Jun 2019 01:52  
 Operator : SM\AJ  
 Sample : HSTDCCC750  
 Misc :  
 ALS Vial : 3 Sample Multiplier: 1

Instrument :  
 ECD\_S  
 ClientSampled :

Integration File signal 1: autoint1.e  
 Integration File signal 2: autoint2.e  
 Quant Time: Jun 12 03:37:39 2019  
 Quant Method : Z:\pestpcbsrv\HPCHEM1\ECD\_S\Method\PS052019.M  
 Quant Title : 8080.M  
 QLast Update : Tue May 21 04:53:35 2019  
 Response via : Initial Calibration  
 Integrator: ChemStation

Volume Inj. : 2 µl  
 Signal #1 Phase : Rtx-CLPesticides Signal #2 Phase: Rtx-CLPesticides2  
 Signal #1 Info : 30M x 0.32mm x0.5 Signal #2 Info : 30M x 0.32mm x 0.25µm

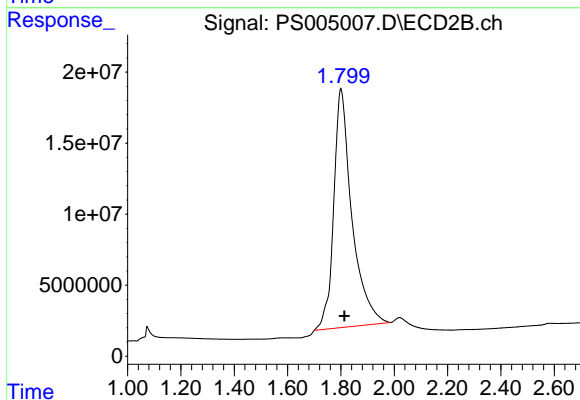




#1 Dalapon

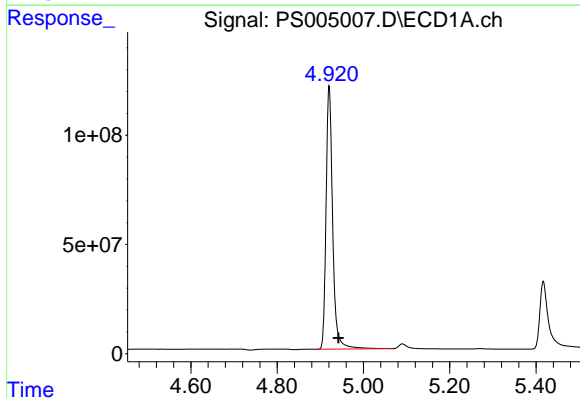
R.T.: 2.104 min  
 Delta R.T.: -0.012 min  
 Response: 1129266986  
 Conc: 681.23 ng/ml

Instrument :  
 ECD\_S  
 ClientSampled :



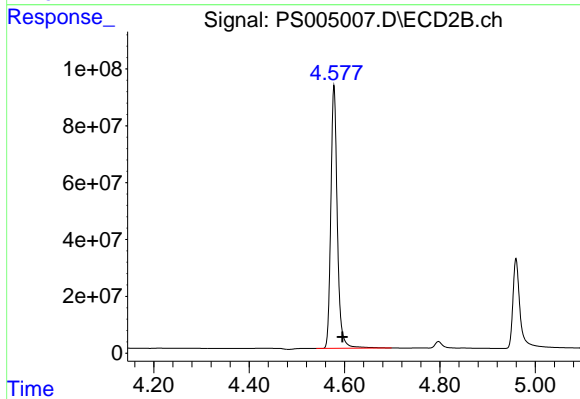
#1 Dalapon

R.T.: 1.800 min  
 Delta R.T.: -0.013 min  
 Response: 796224627  
 Conc: 617.00 ng/ml



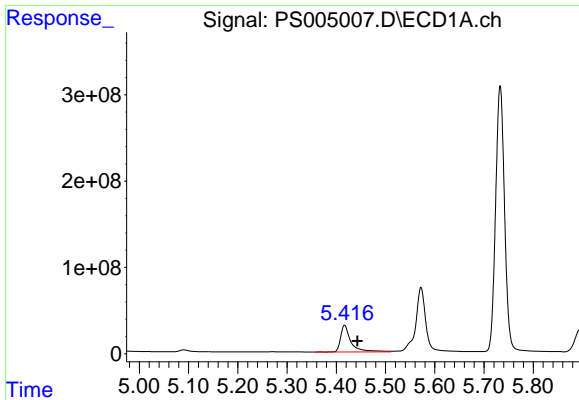
#2 3,5-DICHLOROBENZOIC ACID

R.T.: 4.921 min  
 Delta R.T.: -0.021 min  
 Response: 1280249937  
 Conc: 742.36 ng/ml



#2 3,5-DICHLOROBENZOIC ACID

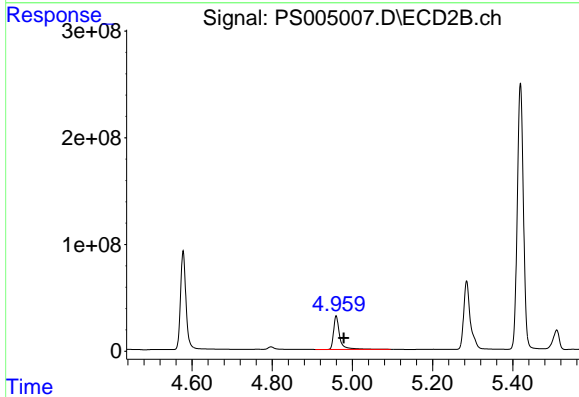
R.T.: 4.578 min  
 Delta R.T.: -0.018 min  
 Response: 876200670  
 Conc: 711.13 ng/ml



#3 4-Nitrophenol

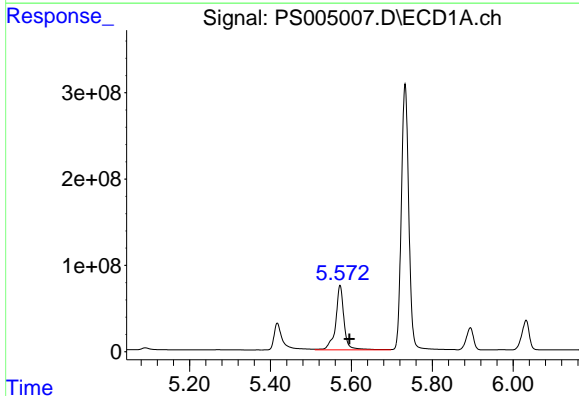
R.T.: 5.417 min  
 Delta R.T.: -0.026 min  
 Response: 457807805  
 Conc: 734.25 ng/ml

Instrument :  
 ECD\_S  
 ClientSampled :



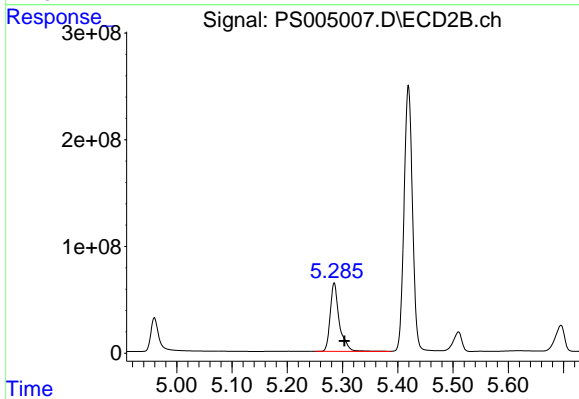
#3 4-Nitrophenol

R.T.: 4.960 min  
 Delta R.T.: -0.019 min  
 Response: 331409064  
 Conc: 699.29 ng/ml



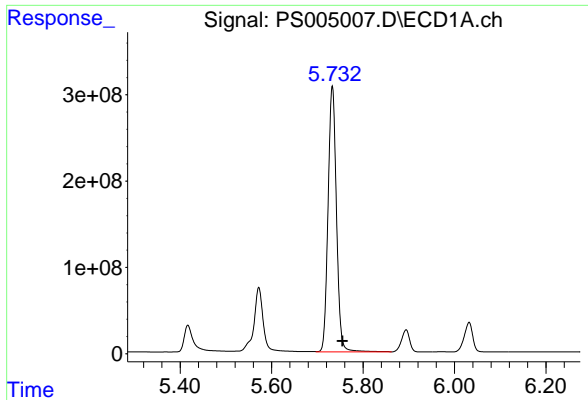
#4 2,4-DCAA

R.T.: 5.572 min  
 Delta R.T.: -0.023 min  
 Response: 1088497459  
 Conc: 776.52 ng/ml



#4 2,4-DCAA

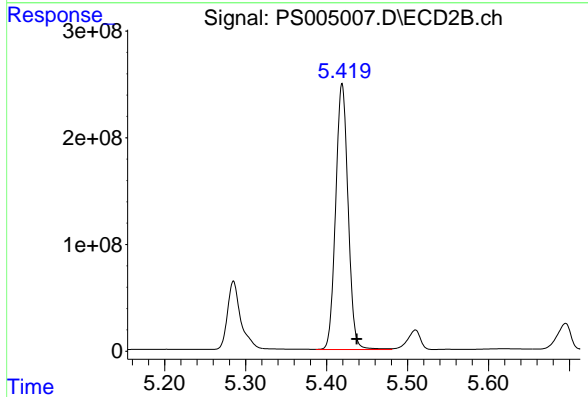
R.T.: 5.285 min  
 Delta R.T.: -0.019 min  
 Response: 737796553  
 Conc: 764.69 ng/ml



#5 DICAMBA

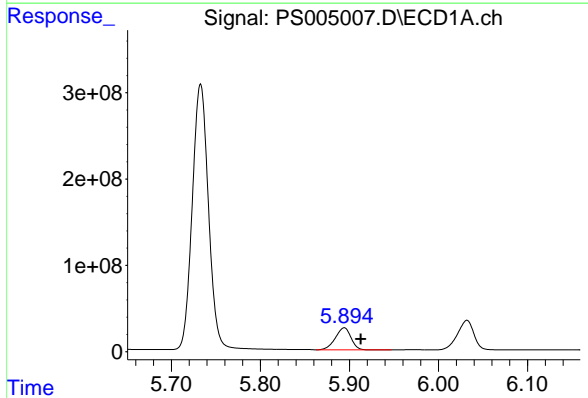
R.T.: 5.733 min  
 Delta R.T.: -0.022 min  
 Response: 3933500019  
 Conc: 740.82 ng/ml

Instrument :  
 ECD\_S  
 ClientSampleId :



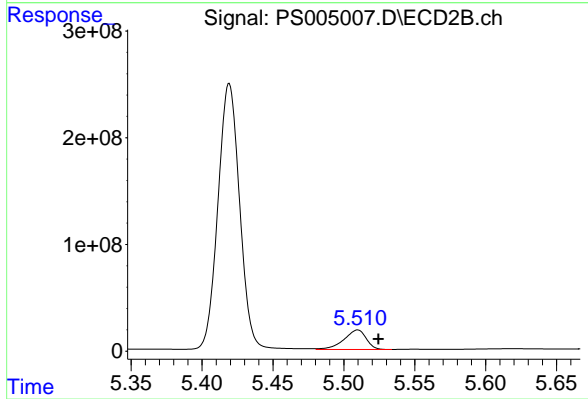
#5 DICAMBA

R.T.: 5.419 min  
 Delta R.T.: -0.018 min  
 Response: 2655067209  
 Conc: 718.71 ng/ml



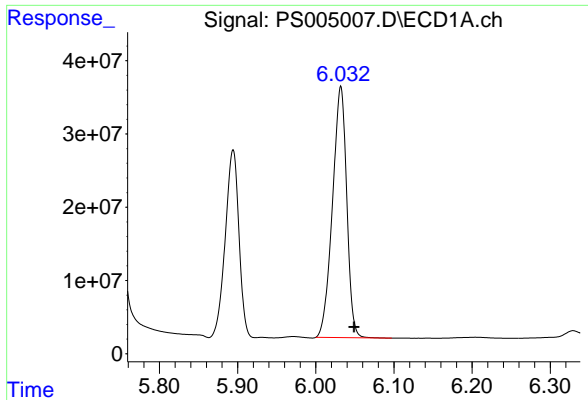
#6 MCPP

R.T.: 5.894 min  
 Delta R.T.: -0.019 min  
 Response: 313536553  
 Conc: 75.31 ug/ml



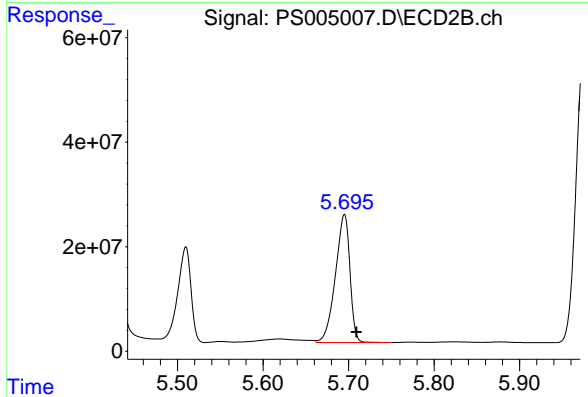
#6 MCPP

R.T.: 5.509 min  
 Delta R.T.: -0.015 min  
 Response: 199627830  
 Conc: 72.86 ug/ml

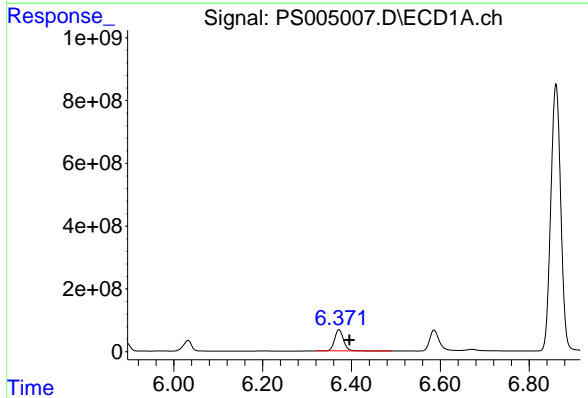


#7 MCPA  
 R.T.: 6.032 min  
 Delta R.T.: -0.017 min  
 Response: 433712454  
 Conc: 74.88 ug/ml

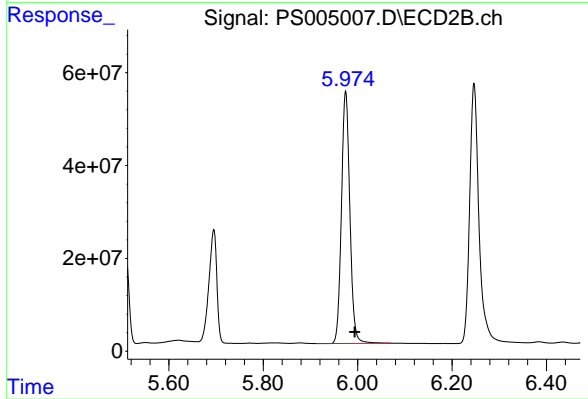
Instrument :  
 ECD\_S  
 ClientSampled :



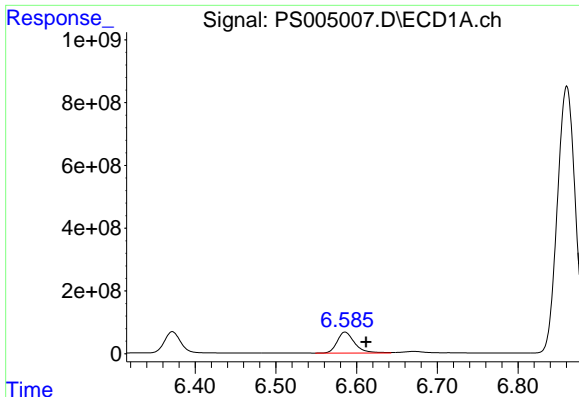
#7 MCPA  
 R.T.: 5.695 min  
 Delta R.T.: -0.014 min  
 Response: 289022585  
 Conc: 70.64 ug/ml



#8 DICHLORPROP  
 R.T.: 6.372 min  
 Delta R.T.: -0.024 min  
 Response: 941654201  
 Conc: 719.52 ng/ml



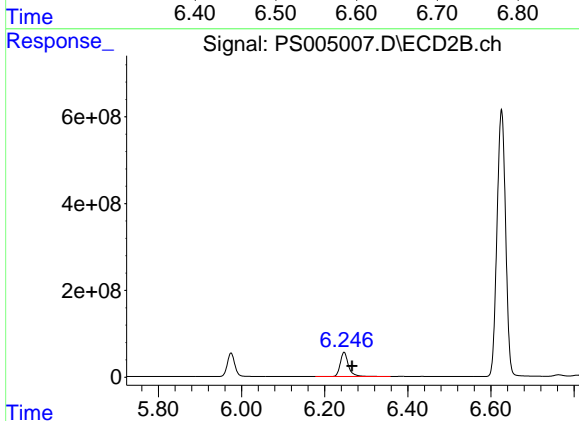
#8 DICHLORPROP  
 R.T.: 5.975 min  
 Delta R.T.: -0.019 min  
 Response: 672194788  
 Conc: 712.96 ng/ml



#9 2,4-D

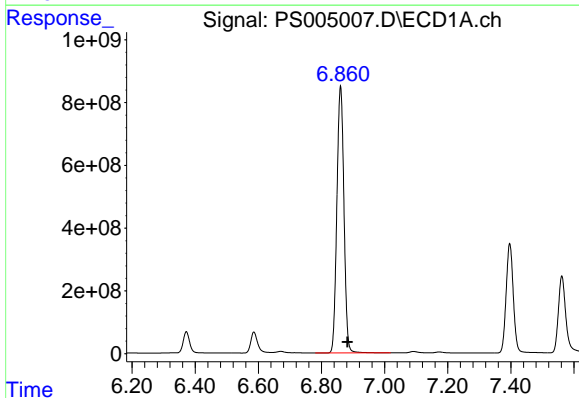
R.T.: 6.586 min  
Delta R.T.: -0.026 min  
Response: 1014491862  
Conc: 741.64 ng/ml

Instrument :  
ECD\_S  
ClientSampled :



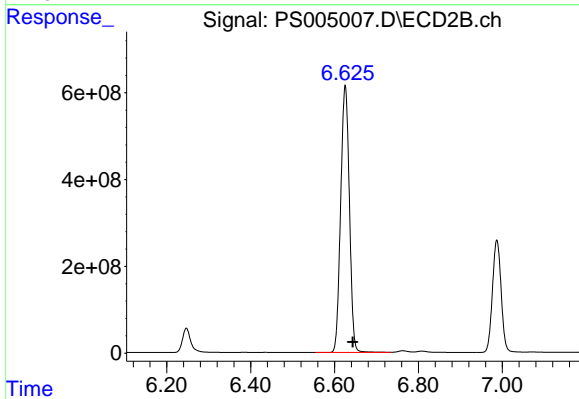
#9 2,4-D

R.T.: 6.247 min  
Delta R.T.: -0.020 min  
Response: 764590862  
Conc: 707.39 ng/ml



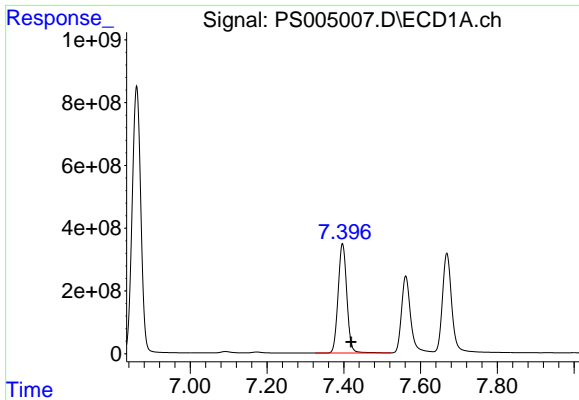
#10 Pentachlorophenol

R.T.: 6.860 min  
Delta R.T.: -0.022 min  
Response: 13214299142  
Conc: 752.49 ng/ml



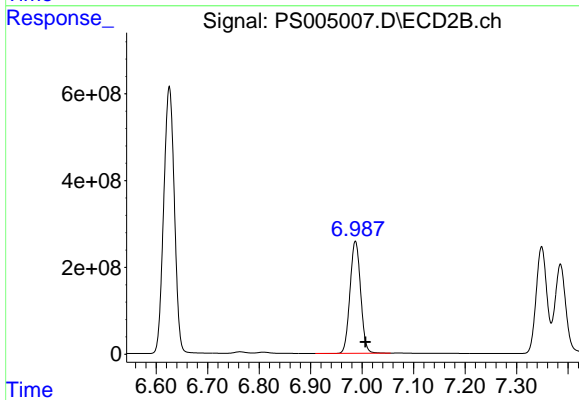
#10 Pentachlorophenol

R.T.: 6.626 min  
Delta R.T.: -0.018 min  
Response: 8876261384  
Conc: 722.54 ng/ml

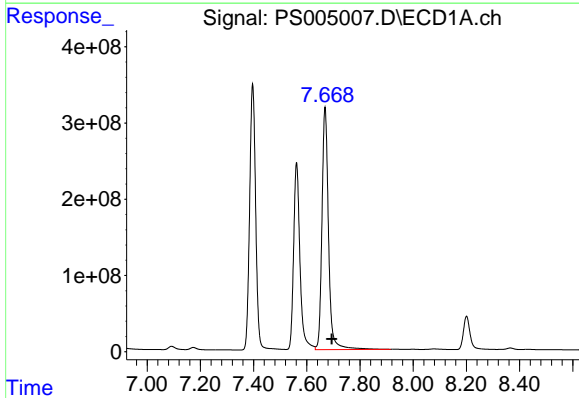


#11 2,4,5-TP (SILVEX)  
 R.T.: 7.397 min  
 Delta R.T.: -0.022 min  
 Response: 5499168849  
 Conc: 750.68 ng/ml

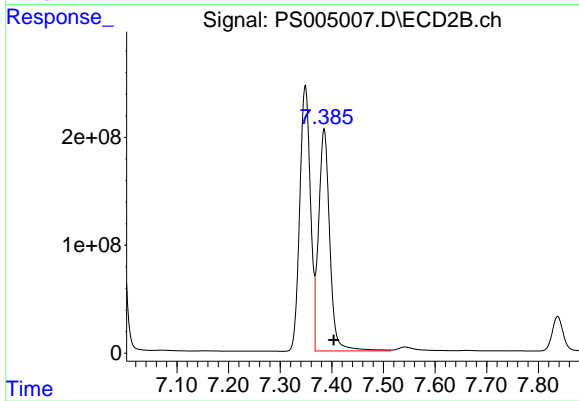
Instrument :  
 ECD\_S  
 ClientSampleId :



#11 2,4,5-TP (SILVEX)  
 R.T.: 6.987 min  
 Delta R.T.: -0.019 min  
 Response: 3693957434  
 Conc: 717.93 ng/ml

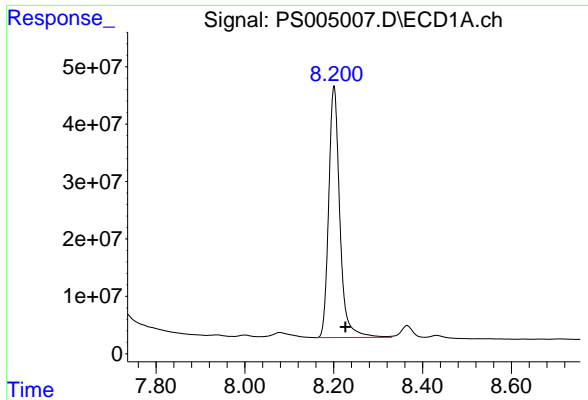


#12 2,4,5-T  
 R.T.: 7.669 min  
 Delta R.T.: -0.025 min  
 Response: 5434797841  
 Conc: 729.75 ng/ml



#12 2,4,5-T  
 R.T.: 7.385 min  
 Delta R.T.: -0.019 min  
 Response: 3098874883  
 Conc: 695.32 ng/ml

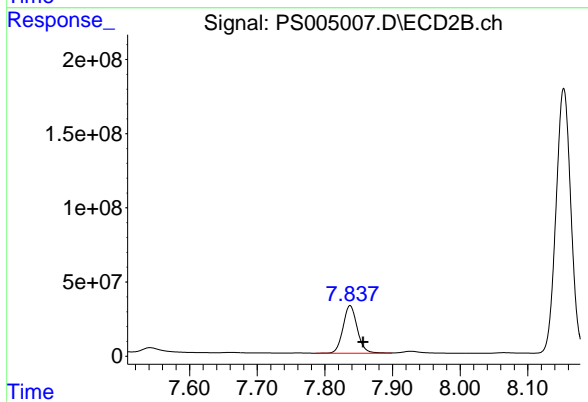




#13 2,4-DB

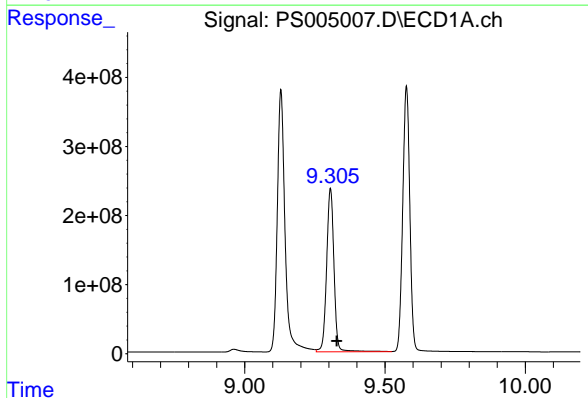
R.T.: 8.201 min  
 Delta R.T.: -0.026 min  
 Response: 761371994  
 Conc: 788.20 ng/ml

Instrument :  
 ECD\_S  
 ClientSampleId :



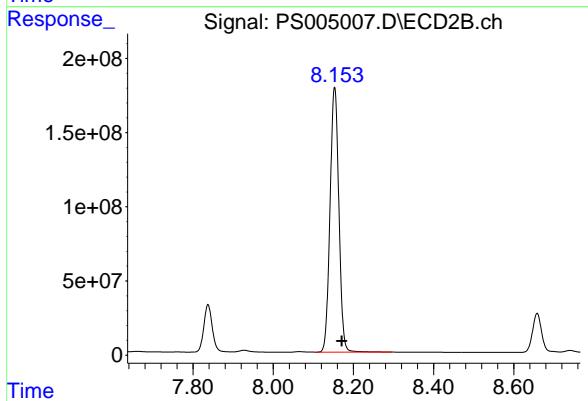
#13 2,4-DB

R.T.: 7.837 min  
 Delta R.T.: -0.019 min  
 Response: 469431124  
 Conc: 718.20 ng/ml



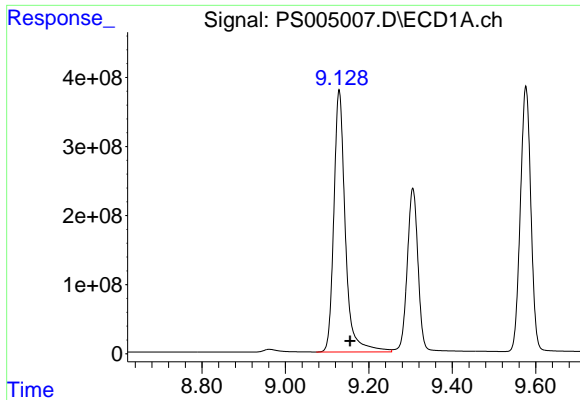
#14 DINOSEB

R.T.: 9.305 min  
 Delta R.T.: -0.023 min  
 Response: 4333468436  
 Conc: 732.63 ng/ml



#14 DINOSEB

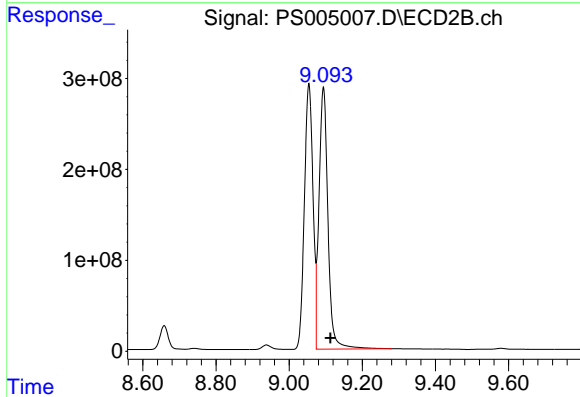
R.T.: 8.153 min  
 Delta R.T.: -0.018 min  
 Response: 2726844388  
 Conc: 709.35 ng/ml



#15 Picloram

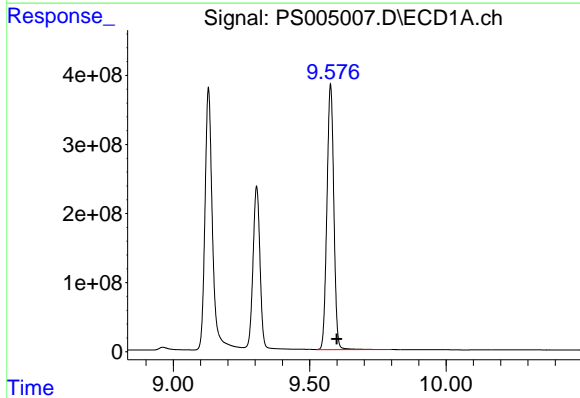
R.T.: 9.129 min  
 Delta R.T.: -0.026 min  
 Response: 7255229048  
 Conc: 696.28 ng/ml

Instrument :  
 ECD\_S  
 ClientSampled :



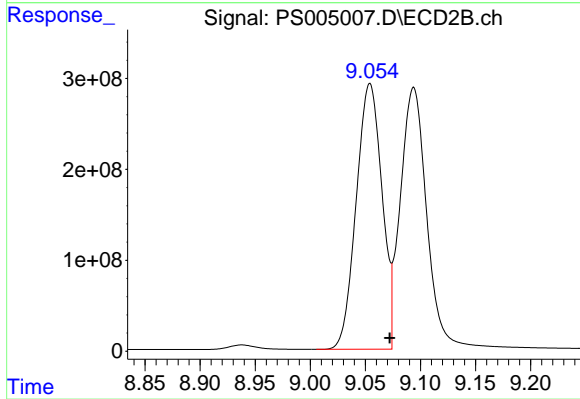
#15 Picloram

R.T.: 9.094 min  
 Delta R.T.: -0.019 min  
 Response: 4872505807  
 Conc: 653.11 ng/ml



#16 DCPA

R.T.: 9.576 min  
 Delta R.T.: -0.022 min  
 Response: 6755304943  
 Conc: 758.50 ng/ml



#16 DCPA

R.T.: 9.054 min  
 Delta R.T.: -0.018 min  
 Response: 4749931655  
 Conc: 733.23 ng/ml