

Data Path : Z:\pestpcbsrv\HPCHEM1\ECD_S\Data\PS061121\
 Data File : PS015471.D
 Signal(s) : Signal #1: ECD1A.ch Signal #2: ECD2B.ch
 Acq On : 13 Jun 2021 03:00
 Operator : DD\AJ
 Sample : M2589-21MSD
 Misc :
 ALS Vial : 68 Sample Multiplier: 1

Instrument :
 ECD_S
 ClientSampleId :

Integration File signal 1: autoint1.e
 Integration File signal 2: autoint2.e
 Quant Time: Jun 14 02:30:18 2021
 Quant Method : Z:\pestpcbsrv\HPCHEM1\ECD_S\Method\PS052821.M
 Quant Title : 8080.M
 QLast Update : Fri May 28 14:34:22 2021
 Response via : Initial Calibration
 Integrator: ChemStation

Volume Inj. : 2 µl
 Signal #1 Phase : Rtx-CLPesticides Signal #2 Phase: Rtx-CLPesticides2
 Signal #1 Info : 30M x 0.32mm x0.5 Signal #2 Info : 30M x 0.32mm x 0.25µm

	Compound	RT#1	RT#2	Resp#1	Resp#2	ng/ml	ng/ml

System Monitoring Compounds							
4) S	2,4-DCAA	7.227	6.781	1451.7E6	266.2E6	575.985	496.784
Target Compounds							
1) T	Dalapon	3.042	2.523	1271.7E6	315.0E6	483.818	481.342
2) T	3,5-DICHL...	6.439	5.967	1914.0E6	412.9E6	555.039	511.150
3) T	4-Nitroph...	7.058	6.397	51133871	27932276	36.273	87.789 #
5) T	DICAMBA	7.421	6.946	5211.7E6	1155.1E6	546.771	521.968
6) T	MCP P	7.590	7.042	432.2E6	102.6E6	60.053	58.051
7) T	MCPA	7.739	7.254	568.1E6	153.6E6	56.606	59.121
8) T	DICHLORPROP	8.115	7.567	1345.8E6	315.0E6	584.341	579.857
9) T	2,4-D	8.343	7.857	1677.2E6	413.5E6	658.231	642.122
10) T	Pentachlo...	8.656	8.288	16957.9E6	3666.0E6	523.863	498.010
11) T	2,4,5-TP ...	9.206	8.649	8174.5E6	1784.5E6	658.652	614.932
12) T	2,4,5-T	9.489	9.026	7294.2E6	1684.7E6	607.296	581.933
13) T	2,4-DB	10.042	9.532	1030.0E6	220.9E6	404.482	572.619 #
14) T	DINOSEB	11.203	9.861	4153.0E6	853.8E6	519.799	467.551
15) T	Picloram	11.018	10.838	8005.5E6	1924.8E6	483.223	463.478
16) T	DCPA	11.472	10.793	8056.8E6	1908.7E6	477.803	442.747

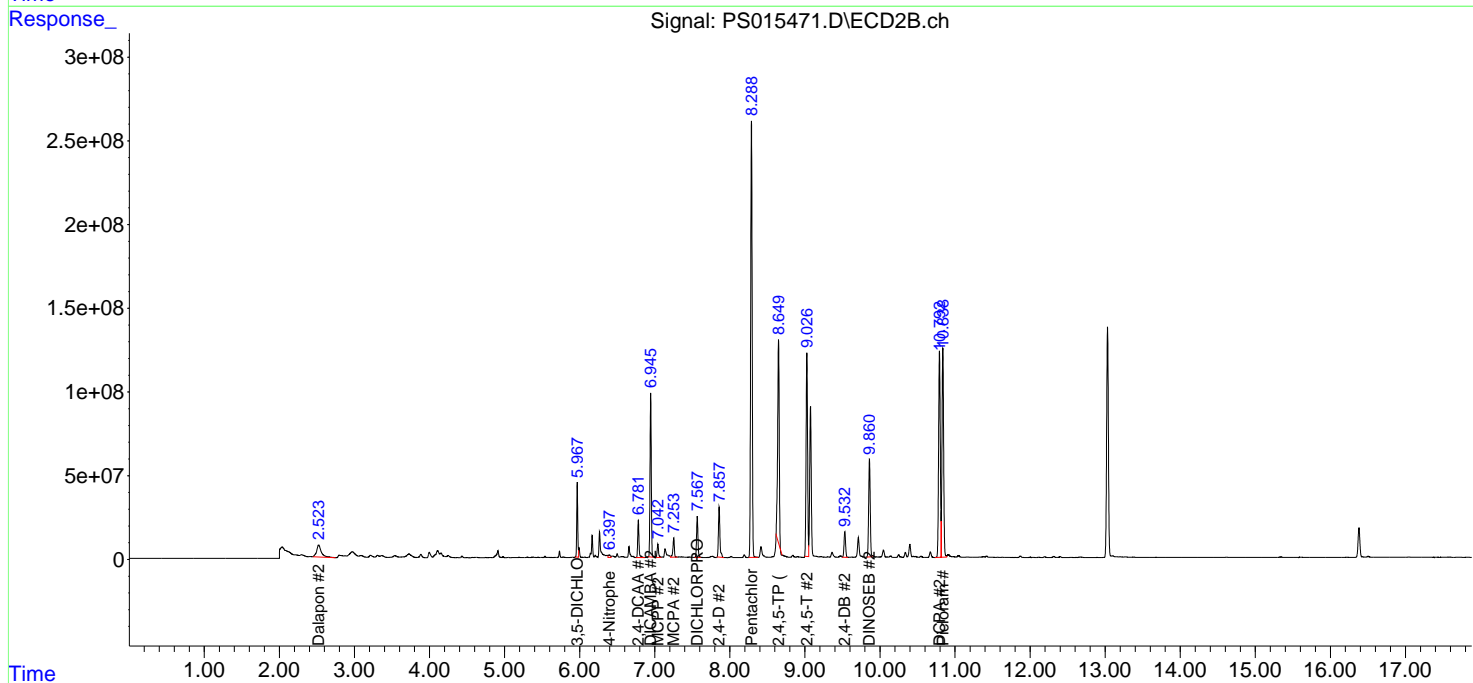
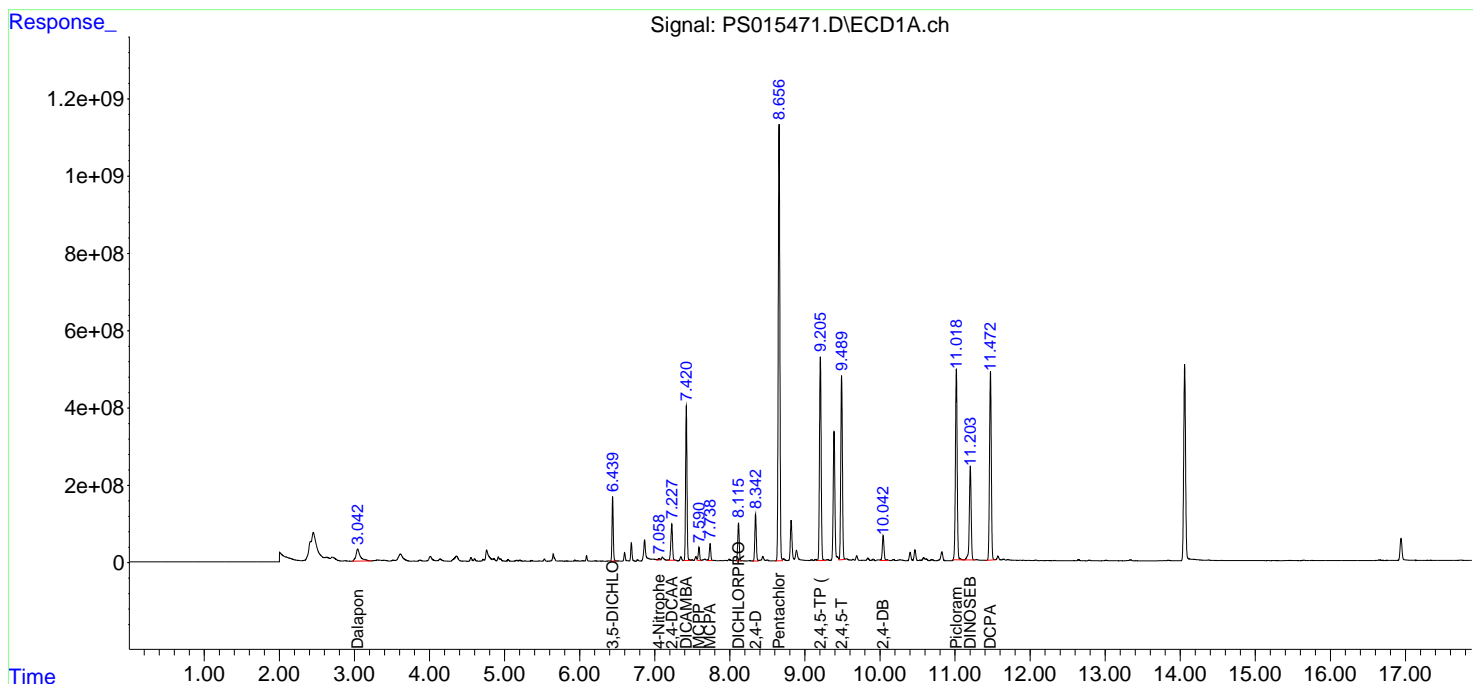
(f)=RT Delta > 1/2 Window (#)=Amounts differ by > 25% (m)=manual int.

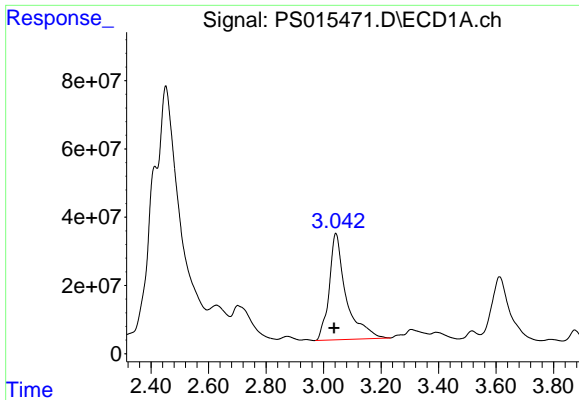
Data Path : Z:\pestpcbsrv\HPCHEM1\ECD_S\Data\PS061121\
 Data File : PS015471.D
 Signal(s) : Signal #1: ECD1A.ch Signal #2: ECD2B.ch
 Acq On : 13 Jun 2021 03:00
 Operator : DD\AJ
 Sample : M2589-21MSD
 Misc :
 ALS Vial : 68 Sample Multiplier: 1

Instrument :
 ECD_S
 ClientSampled :

Integration File signal 1: autoint1.e
 Integration File signal 2: autoint2.e
 Quant Time: Jun 14 02:30:18 2021
 Quant Method : Z:\pestpcbsrv\HPCHEM1\ECD_S\Method\PS052821.M
 Quant Title : 8080.M
 QLast Update : Fri May 28 14:34:22 2021
 Response via : Initial Calibration
 Integrator: ChemStation

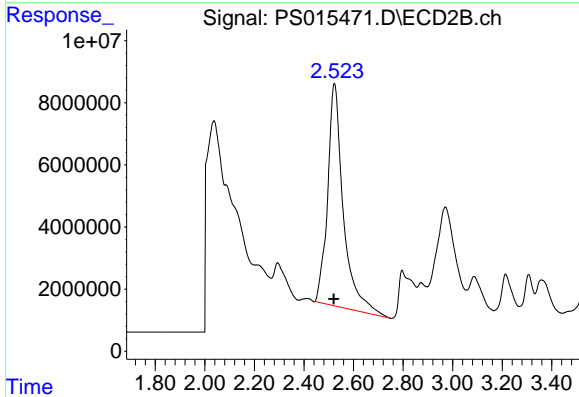
Volume Inj. : 2 µl
 Signal #1 Phase : Rtx-CLPesticides Signal #2 Phase: Rtx-CLPesticides2
 Signal #1 Info : 30M x 0.32mm x0.5 Signal #2 Info : 30M x 0.32mm x 0.25µm



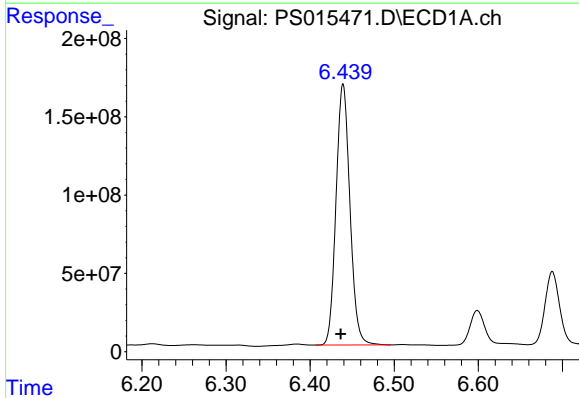


#1 Dalapon
 R.T.: 3.042 min
 Delta R.T.: 0.005 min
 Response: 1271656054
 Conc: 483.82 ng/ml

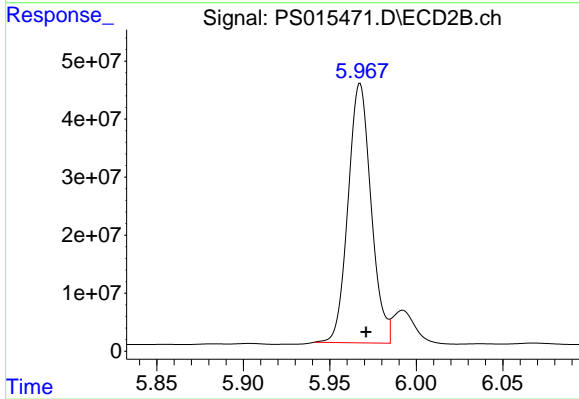
Instrument :
 ECD_S
 ClientSampleId :



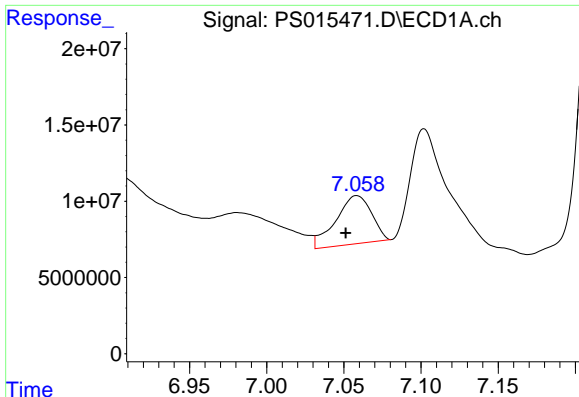
#1 Dalapon
 R.T.: 2.523 min
 Delta R.T.: 0.003 min
 Response: 315015226
 Conc: 481.34 ng/ml



#2 3,5-DICHLOROBENZOIC ACID
 R.T.: 6.439 min
 Delta R.T.: 0.003 min
 Response: 1914004789
 Conc: 555.04 ng/ml



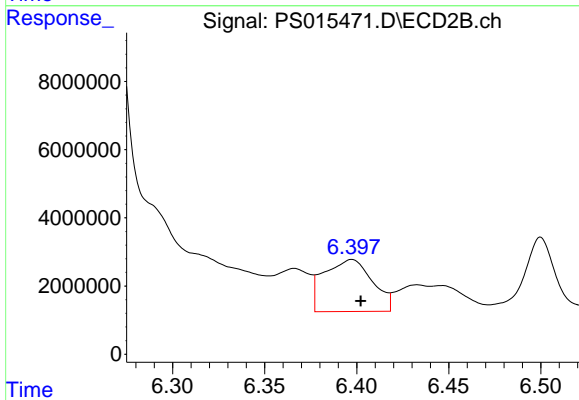
#2 3,5-DICHLOROBENZOIC ACID
 R.T.: 5.967 min
 Delta R.T.: -0.004 min
 Response: 412929735
 Conc: 511.15 ng/ml



#3 4-Nitrophenol

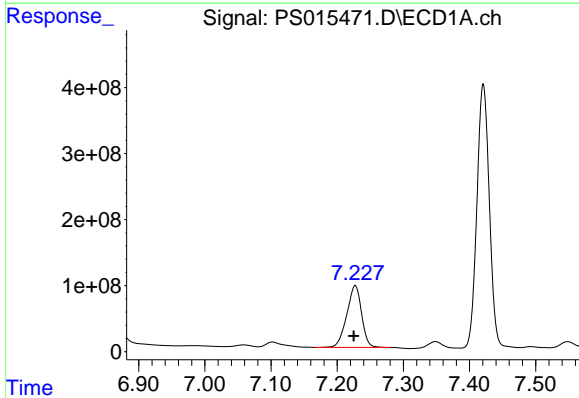
R.T.: 7.058 min
 Delta R.T.: 0.007 min
 Response: 51133871
 Conc: 36.27 ng/ml

Instrument :
 ECD_S
 ClientSampleId :



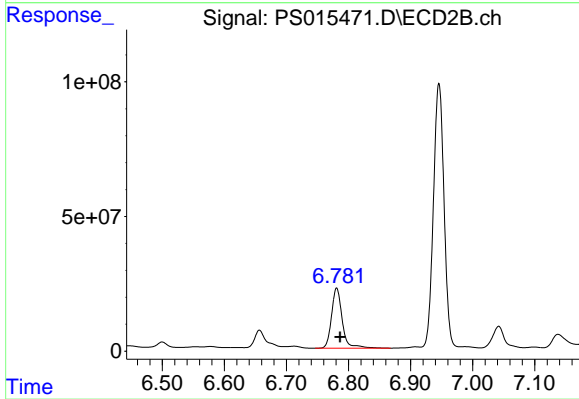
#3 4-Nitrophenol

R.T.: 6.397 min
 Delta R.T.: -0.005 min
 Response: 27932276
 Conc: 87.79 ng/ml



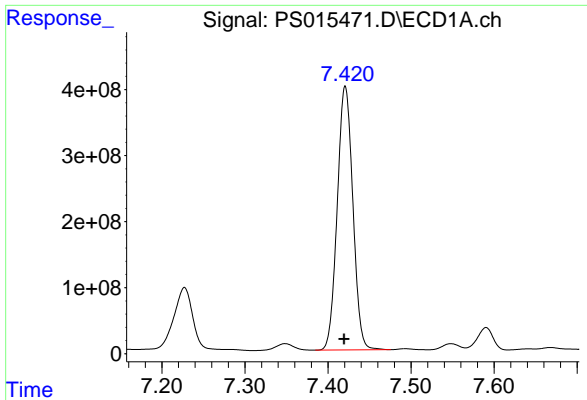
#4 2,4-DCAA

R.T.: 7.227 min
 Delta R.T.: 0.002 min
 Response: 1451697399
 Conc: 575.98 ng/ml



#4 2,4-DCAA

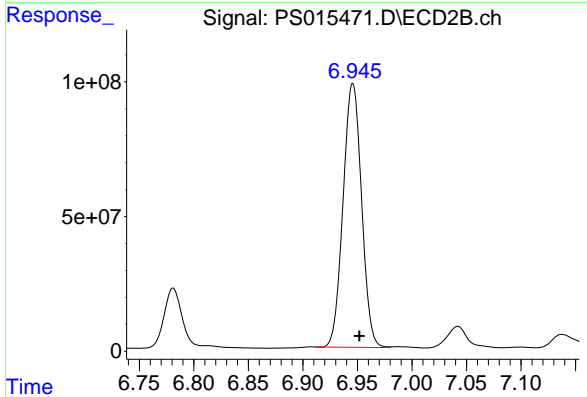
R.T.: 6.781 min
 Delta R.T.: -0.005 min
 Response: 266162651
 Conc: 496.78 ng/ml



#5 DICAMBA

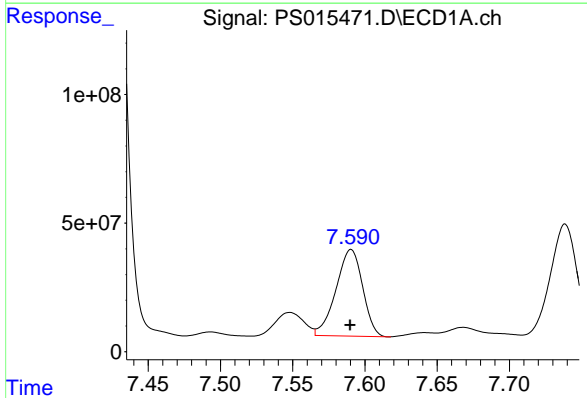
R.T.: 7.421 min
 Delta R.T.: 0.002 min
 Response: 5211686549
 Conc: 546.77 ng/ml

Instrument :
 ECD_S
 ClientSampleId :



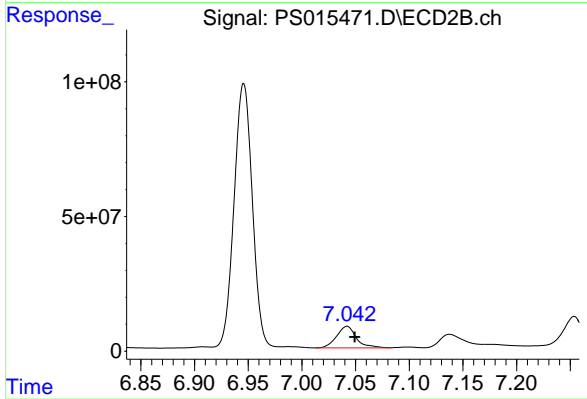
#5 DICAMBA

R.T.: 6.946 min
 Delta R.T.: -0.006 min
 Response: 1155081956
 Conc: 521.97 ng/ml



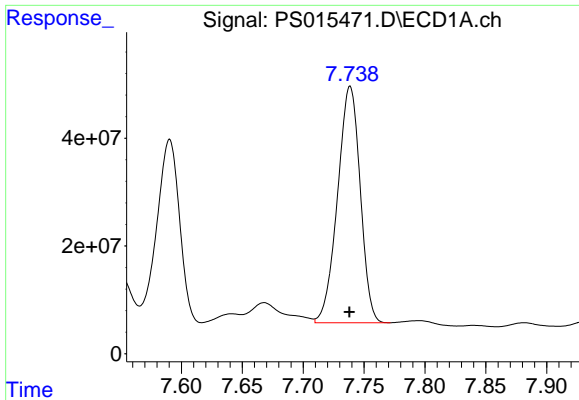
#6 MCPP

R.T.: 7.590 min
 Delta R.T.: 0.000 min
 Response: 432159288
 Conc: 60.05 ug/ml



#6 MCPP

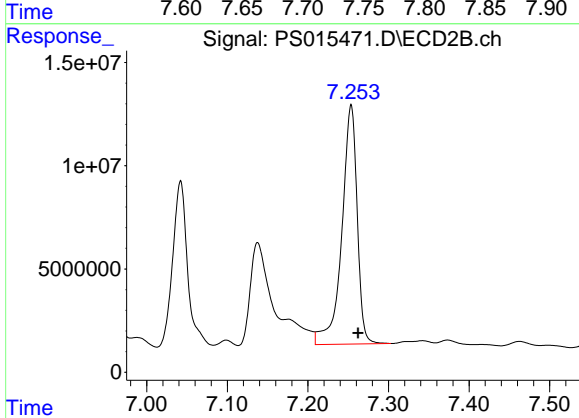
R.T.: 7.042 min
 Delta R.T.: -0.007 min
 Response: 102582193
 Conc: 58.05 ug/ml



#7 MCPA

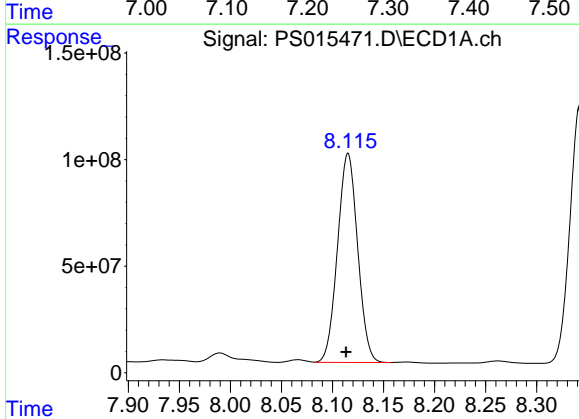
R.T.: 7.739 min
 Delta R.T.: 0.000 min
 Response: 568127042
 Conc: 56.61 ug/ml

Instrument :
 ECD_S
 ClientSampleId :



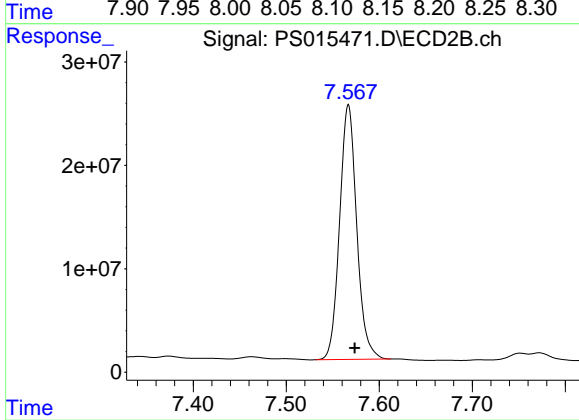
#7 MCPA

R.T.: 7.254 min
 Delta R.T.: -0.009 min
 Response: 153641290
 Conc: 59.12 ug/ml



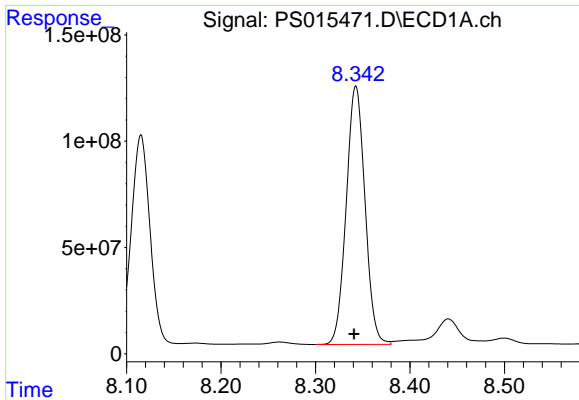
#8 DICHLORPROP

R.T.: 8.115 min
 Delta R.T.: 0.002 min
 Response: 1345798102
 Conc: 584.34 ng/ml



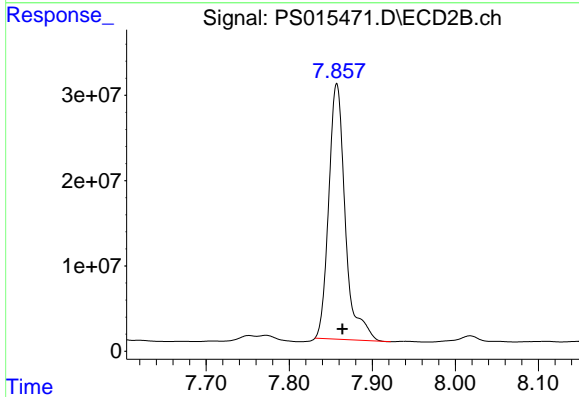
#8 DICHLORPROP

R.T.: 7.567 min
 Delta R.T.: -0.007 min
 Response: 315015377
 Conc: 579.86 ng/ml

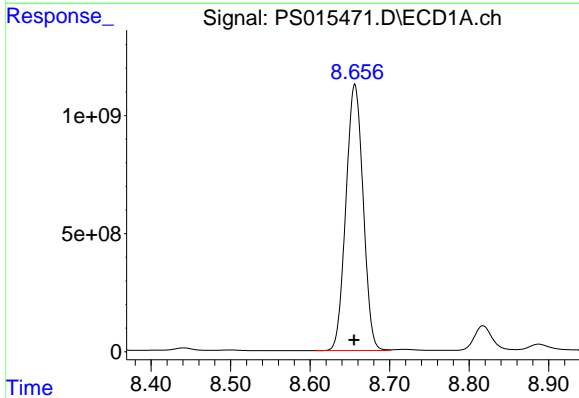


#9 2,4-D
 R.T.: 8.343 min
 Delta R.T.: 0.002 min
 Response: 1677249058
 Conc: 658.23 ng/ml

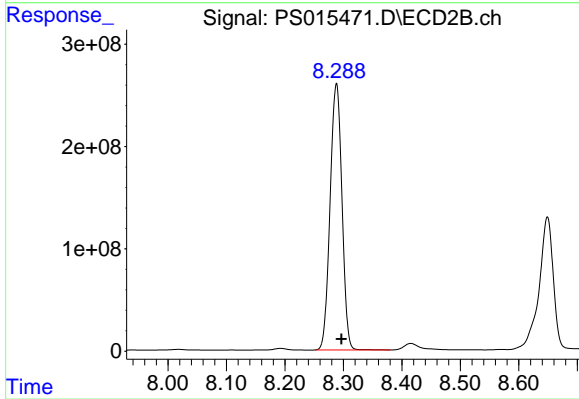
Instrument :
 ECD_S
 ClientSampled :



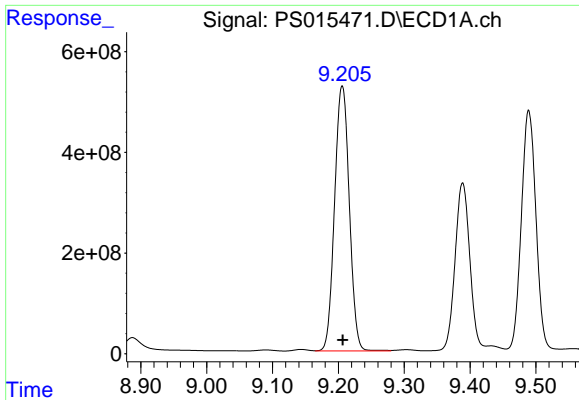
#9 2,4-D
 R.T.: 7.857 min
 Delta R.T.: -0.007 min
 Response: 413543078
 Conc: 642.12 ng/ml



#10 Pentachlorophenol
 R.T.: 8.656 min
 Delta R.T.: 0.001 min
 Response: 16957869038
 Conc: 523.86 ng/ml

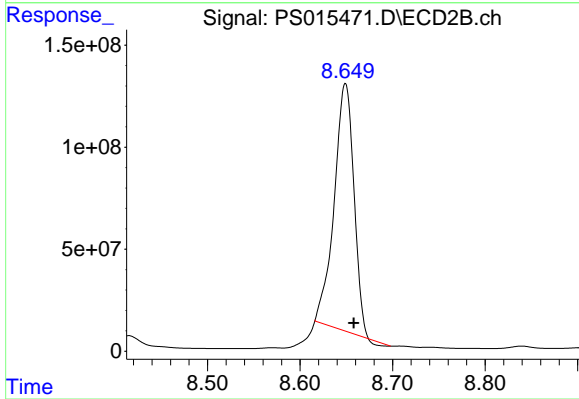


#10 Pentachlorophenol
 R.T.: 8.288 min
 Delta R.T.: -0.009 min
 Response: 3665950514
 Conc: 498.01 ng/ml

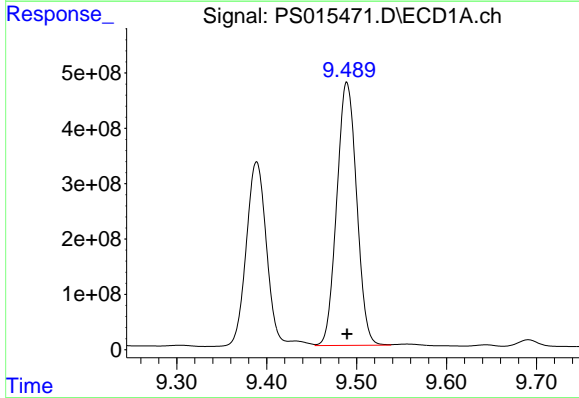


#11 2,4,5-TP (SILVEX)
 R.T.: 9.206 min
 Delta R.T.: 0.000 min
 Response: 8174535818
 Conc: 658.65 ng/ml

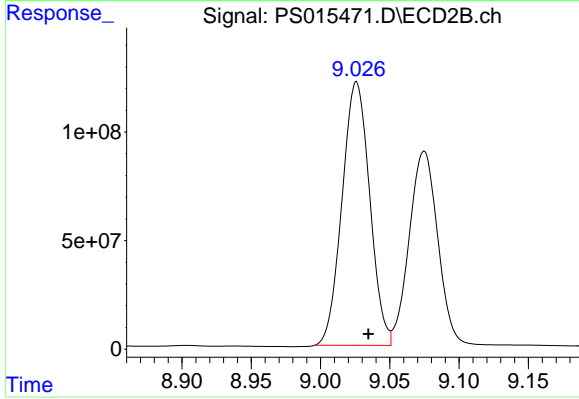
Instrument :
 ECD_S
 ClientSampled :



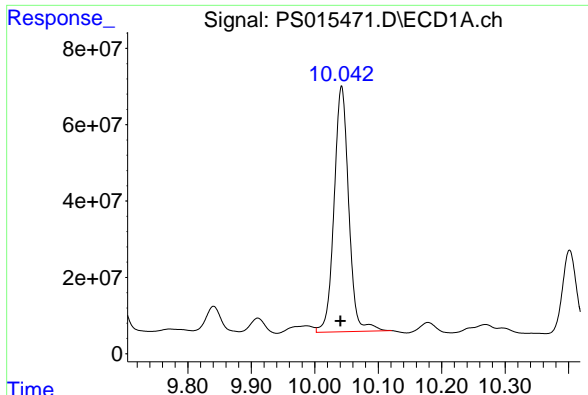
#11 2,4,5-TP (SILVEX)
 R.T.: 8.649 min
 Delta R.T.: -0.009 min
 Response: 1784493723
 Conc: 614.93 ng/ml



#12 2,4,5-T
 R.T.: 9.489 min
 Delta R.T.: 0.000 min
 Response: 7294176567
 Conc: 607.30 ng/ml

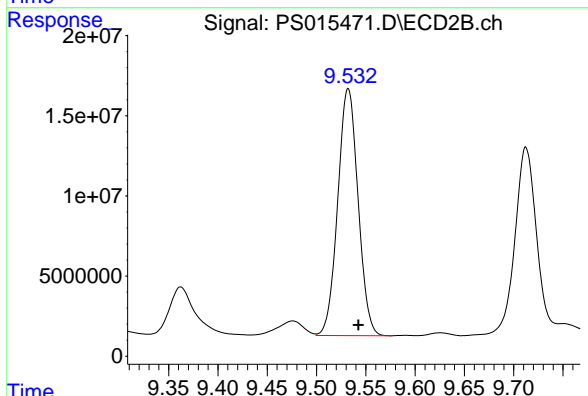


#12 2,4,5-T
 R.T.: 9.026 min
 Delta R.T.: -0.009 min
 Response: 1684695671
 Conc: 581.93 ng/ml

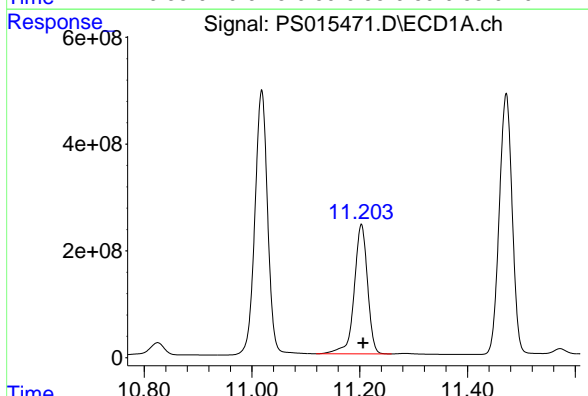


#13 2,4-DB
R.T.: 10.042 min
Delta R.T.: 0.002 min
Response: 1030025338
Conc: 404.48 ng/ml

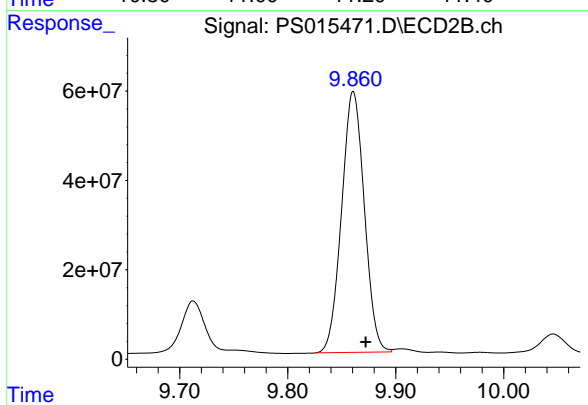
Instrument :
ECD_S
ClientSampleId :



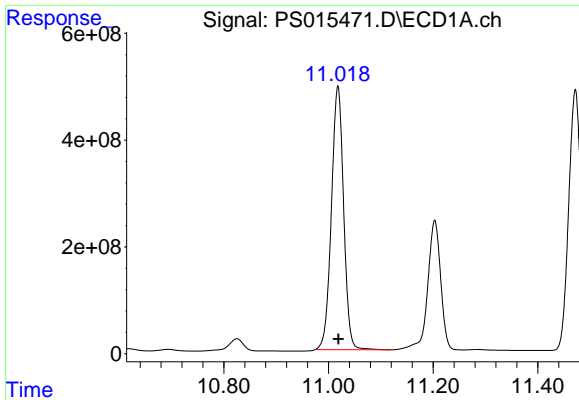
#13 2,4-DB
R.T.: 9.532 min
Delta R.T.: -0.010 min
Response: 220887517
Conc: 572.62 ng/ml



#14 DINOSEB
R.T.: 11.203 min
Delta R.T.: -0.003 min
Response: 4152971355
Conc: 519.80 ng/ml

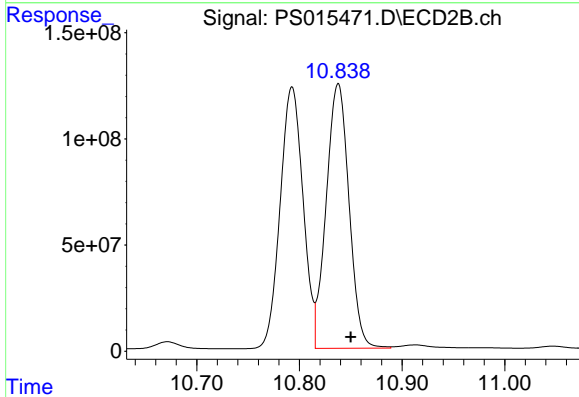


#14 DINOSEB
R.T.: 9.861 min
Delta R.T.: -0.011 min
Response: 853815247
Conc: 467.55 ng/ml

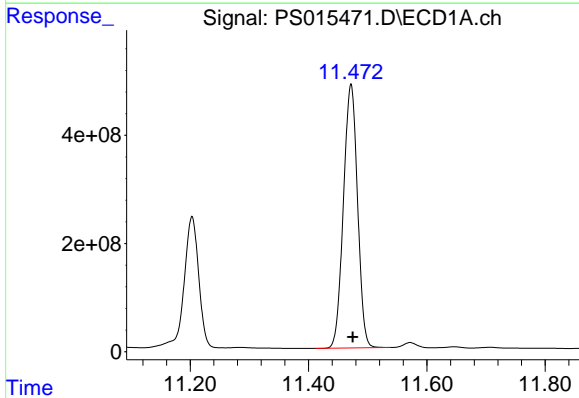


#15 Picloram
 R.T.: 11.018 min
 Delta R.T.: -0.001 min
 Response: 8005453177
 Conc: 483.22 ng/ml

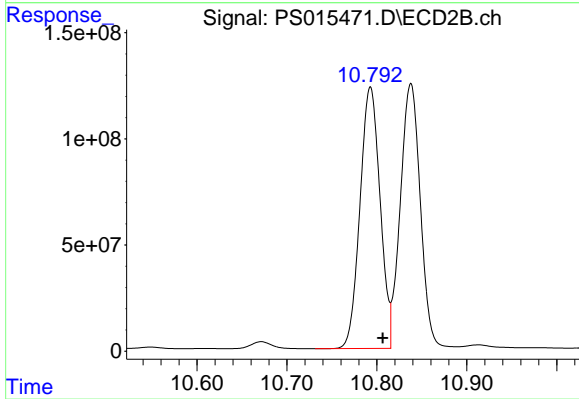
Instrument :
 ECD_S
 ClientSampled :



#15 Picloram
 R.T.: 10.838 min
 Delta R.T.: -0.012 min
 Response: 1924773260
 Conc: 463.48 ng/ml



#16 DCPA
 R.T.: 11.472 min
 Delta R.T.: -0.003 min
 Response: 8056759831
 Conc: 477.80 ng/ml



#16 DCPA
 R.T.: 10.793 min
 Delta R.T.: -0.014 min
 Response: 1908681108
 Conc: 442.75 ng/ml