

Data Path : Z:\pestpcbsrv\HPCHEM1\ECD_S\Data\PS061121\
 Data File : PS015493.D
 Signal(s) : Signal #1: ECD1A.ch Signal #2: ECD2B.ch
 Acq On : 13 Jun 2021 12:15
 Operator : DD\AJ
 Sample : M2589-39
 Misc :
 ALS Vial : 86 Sample Multiplier: 1

Instrument :
 ECD_S
 ClientSampleId :

Integration File signal 1: autoint1.e
 Integration File signal 2: autoint2.e
 Quant Time: Jun 14 04:23:43 2021
 Quant Method : Z:\pestpcbsrv\HPCHEM1\ECD_S\Method\PS052821.M
 Quant Title : 8080.M
 QLast Update : Fri May 28 14:34:22 2021
 Response via : Initial Calibration
 Integrator: ChemStation

Volume Inj. : 2 µl
 Signal #1 Phase : Rtx-CLPesticides Signal #2 Phase: Rtx-CLPesticides2
 Signal #1 Info : 30M x 0.32mm x0.5 Signal #2 Info : 30M x 0.32mm x 0.25µm

	Compound	RT#1	RT#2	Resp#1	Resp#2	ng/ml	ng/ml

System Monitoring Compounds							
4) S	2,4-DCAA	7.227	6.780	1083.0E6	198.1E6	429.706	369.775
Target Compounds							
1) T	Dalapon	3.008	2.486	65737668	18005693	25.011	27.513
2) T	3,5-DICHL...	6.384f	5.992	3992269	40415327	1.158	50.029 #
3) T	4-Nitroph...	7.065	6.385	11519803	18406457	8.172	57.850 #
5) T	DICAMBA	7.407	6.906f	12138342	560963	1.273	<MDL #
6) T	MCP P	7.587	0.000	613959	0	<MDL	N.D. #
7) T	MCPA	7.775	7.318f	2837692	656509	<MDL	<MDL #
8) T	DICHLORPROP	8.101	7.584	4397725	10467818	1.909	19.268 #
10) T	Pentachlo...	8.655	8.284	21841033	8627735	<MDL	1.172 #
11) T	2,4,5-TP ...	9.174	8.675	11784270	2411462	<MDL	<MDL #
12) T	2,4,5-T	9.471	9.084f	13540030	6369314	1.127	2.200 #
13) T	2,4-DB	10.082f	9.608f	19217776	3994397	7.547	10.355 #
14) T	DINOSEB	11.210	9.868	33133406	6661133	4.147	3.648
15) T	Picloram	10.993	10.856	131.5E6	7119248	7.940	1.714 #
16) T	DCPA	11.463	10.788	11806104	7141508	<MDL	1.657 #

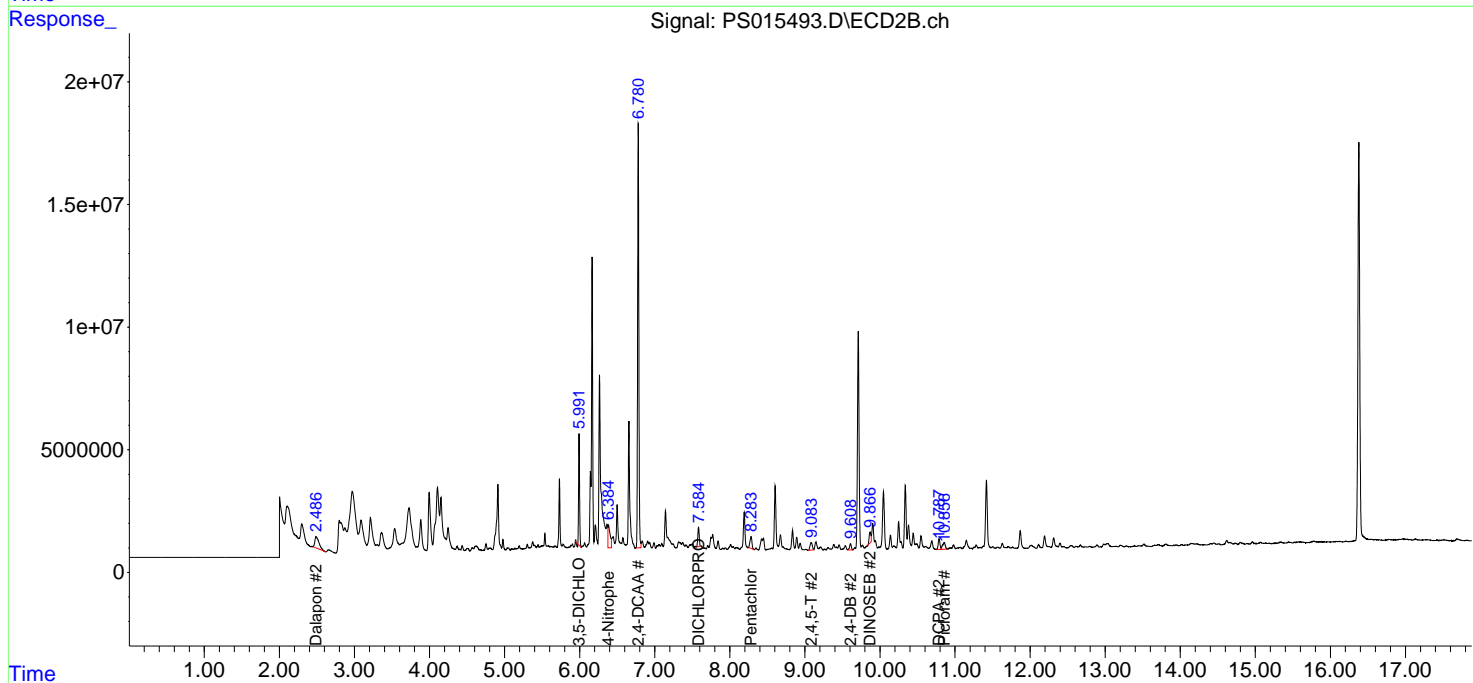
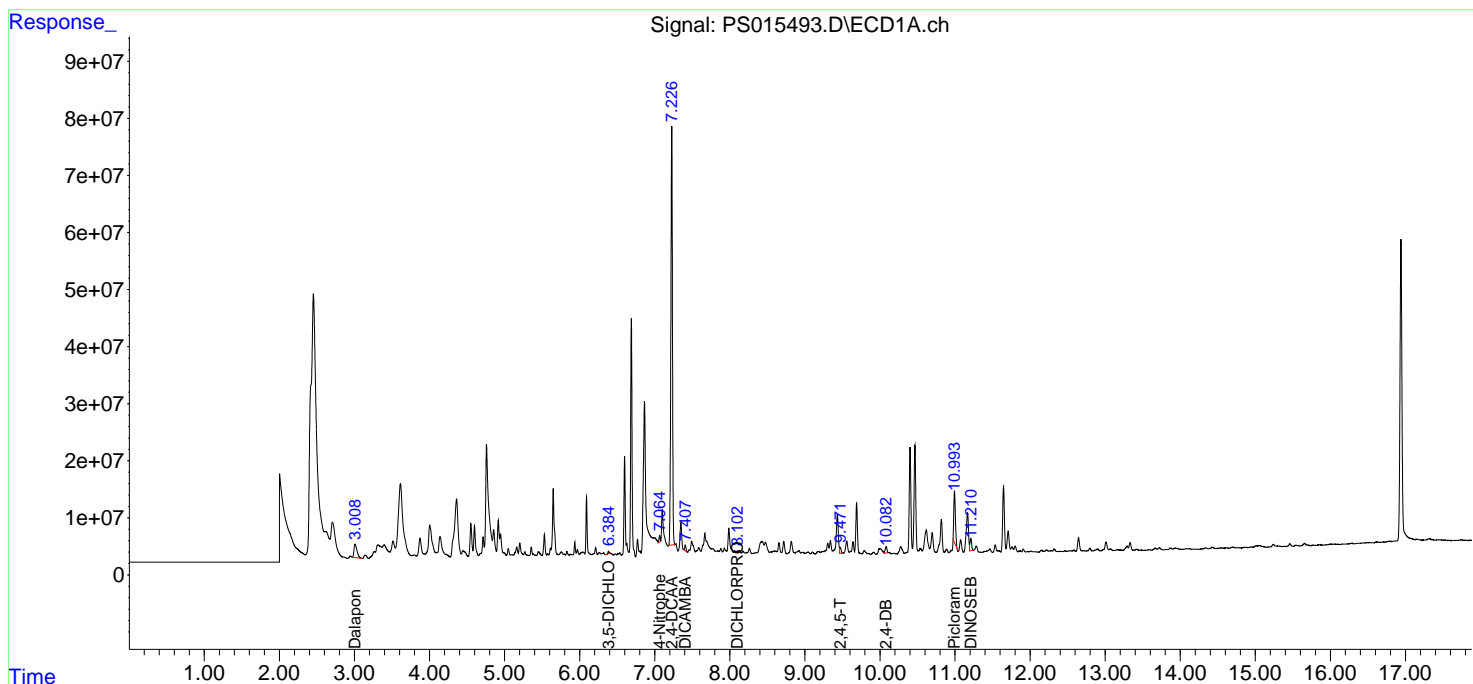
(f)=RT Delta > 1/2 Window (#)=Amounts differ by > 25% (m)=manual int.

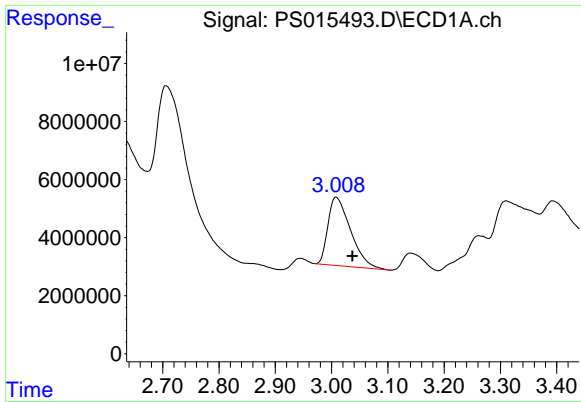
Data Path : Z:\pestpcbsrv\HPCHEM1\ECD_S\Data\PS061121\
 Data File : PS015493.D
 Signal(s) : Signal #1: ECD1A.ch Signal #2: ECD2B.ch
 Acq On : 13 Jun 2021 12:15
 Operator : DD\AJ
 Sample : M2589-39
 Misc :
 ALS Vial : 86 Sample Multiplier: 1

Instrument :
 ECD_S
 ClientSampled :

Integration File signal 1: autoint1.e
 Integration File signal 2: autoint2.e
 Quant Time: Jun 14 04:23:43 2021
 Quant Method : Z:\pestpcbsrv\HPCHEM1\ECD_S\Method\PS052821.M
 Quant Title : 8080.M
 QLast Update : Fri May 28 14:34:22 2021
 Response via : Initial Calibration
 Integrator: ChemStation

Volume Inj. : 2 µl
 Signal #1 Phase : Rtx-CLPesticides Signal #2 Phase: Rtx-CLPesticides2
 Signal #1 Info : 30M x 0.32mm x0.5 Signal #2 Info : 30M x 0.32mm x 0.25µm

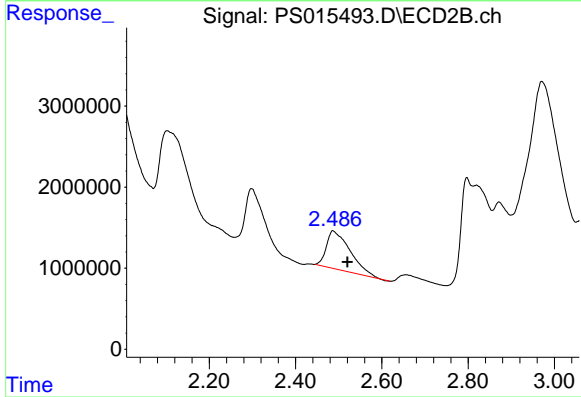




#1 Dalapon

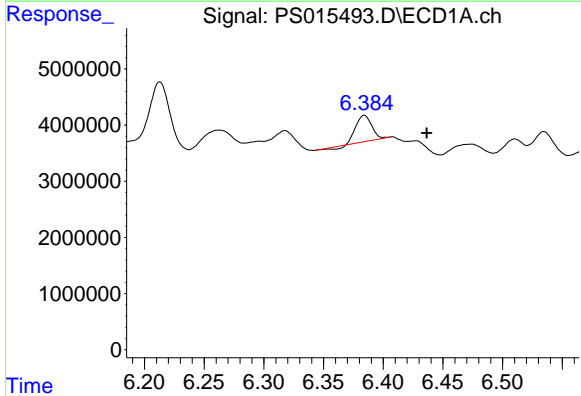
R.T.: 3.008 min
 Delta R.T.: -0.029 min
 Response: 65737668
 Conc: 25.01 ng/ml

Instrument :
 ECD_S
 ClientSampled :



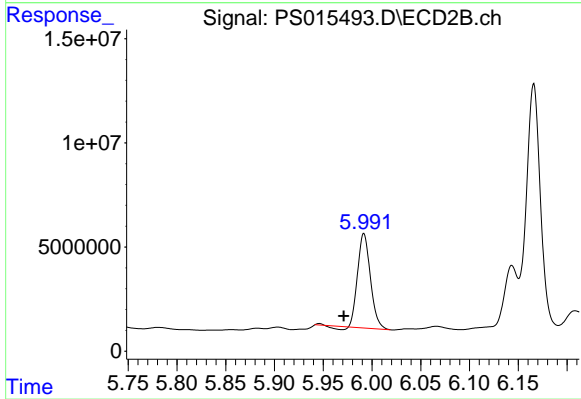
#1 Dalapon

R.T.: 2.486 min
 Delta R.T.: -0.034 min
 Response: 18005693
 Conc: 27.51 ng/ml



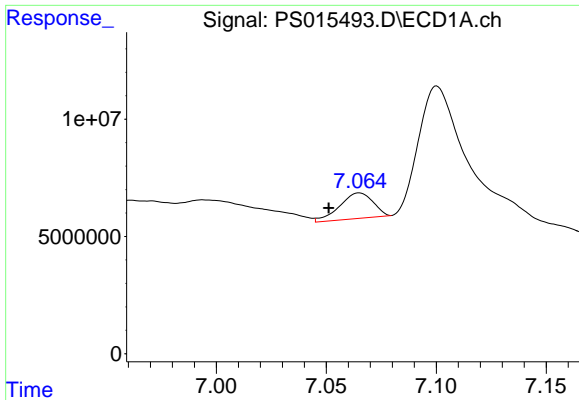
#2 3,5-DICHLOROBENZOIC ACID

R.T.: 6.384 min
 Delta R.T.: -0.052 min
 Response: 3992269
 Conc: 1.16 ng/ml



#2 3,5-DICHLOROBENZOIC ACID

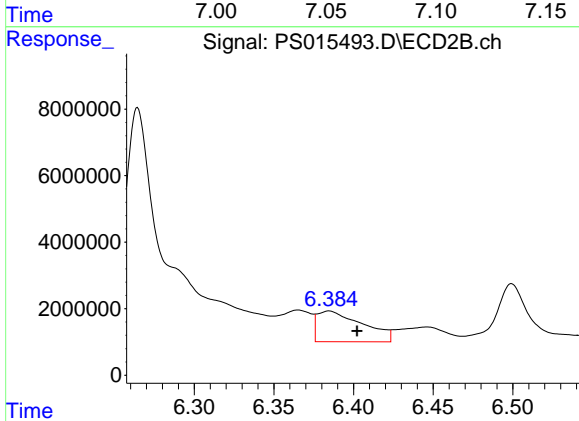
R.T.: 5.992 min
 Delta R.T.: 0.021 min
 Response: 40415327
 Conc: 50.03 ng/ml



#3 4-Nitrophenol

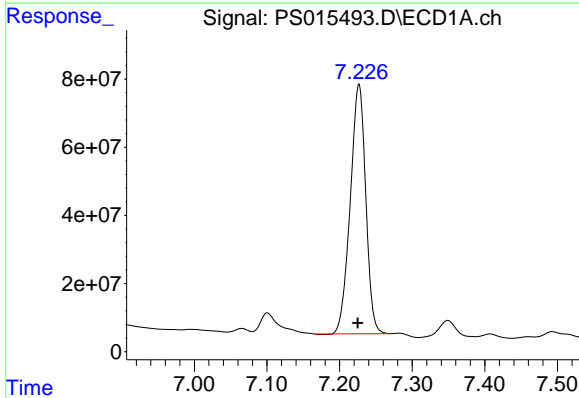
R.T.: 7.065 min
 Delta R.T.: 0.014 min
 Response: 11519803
 Conc: 8.17 ng/ml

Instrument :
 ECD_S
 ClientSampleId :



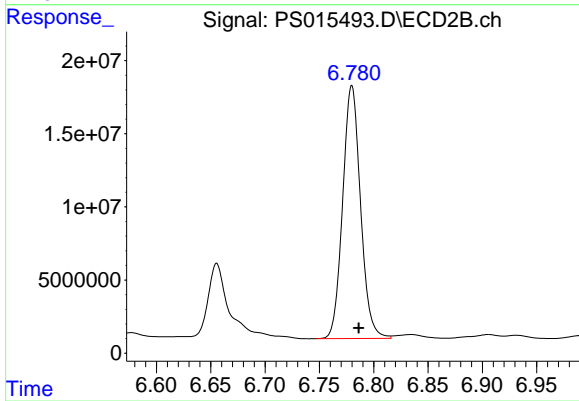
#3 4-Nitrophenol

R.T.: 6.385 min
 Delta R.T.: -0.017 min
 Response: 18406457
 Conc: 57.85 ng/ml



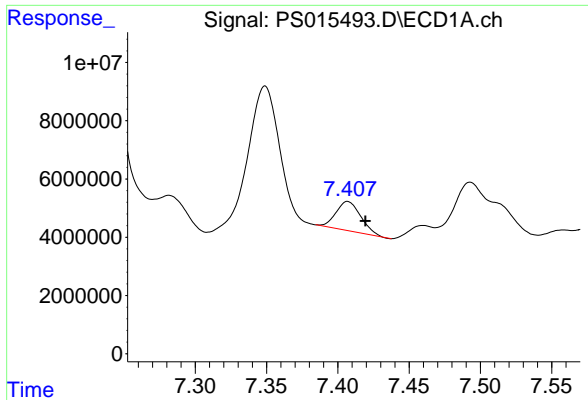
#4 2,4-DCAA

R.T.: 7.227 min
 Delta R.T.: 0.002 min
 Response: 1083021313
 Conc: 429.71 ng/ml



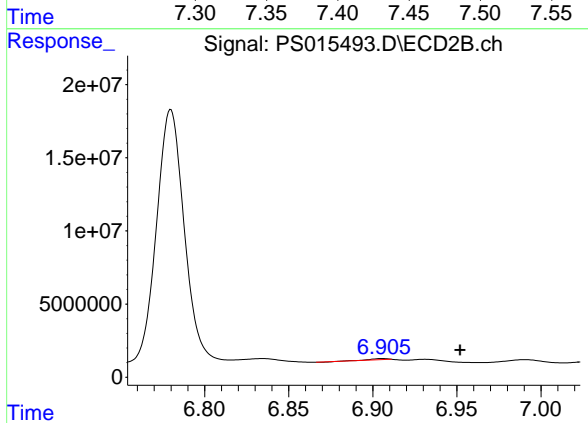
#4 2,4-DCAA

R.T.: 6.780 min
 Delta R.T.: -0.006 min
 Response: 198114880
 Conc: 369.78 ng/ml

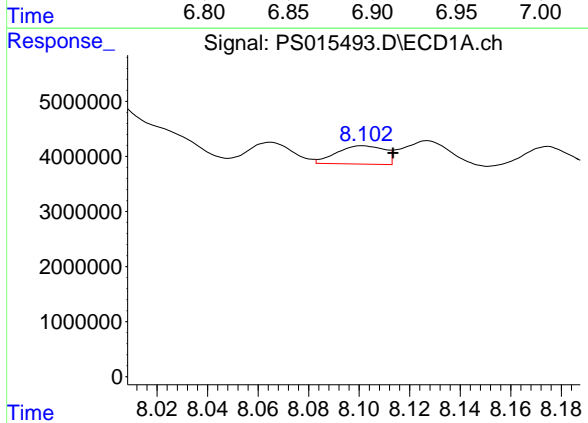


#5 DICAMBA
 R.T.: 7.407 min
 Delta R.T.: -0.012 min
 Response: 12138342
 Conc: 1.27 ng/ml

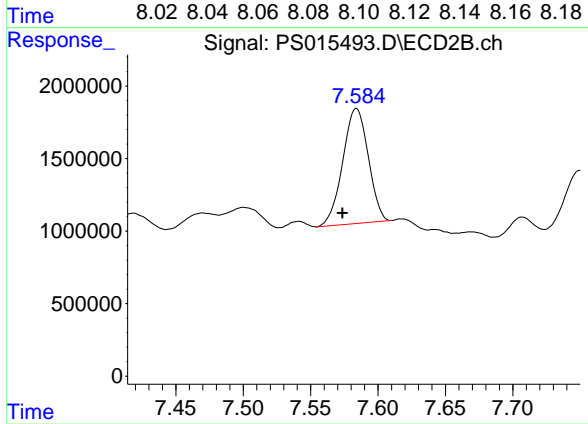
Instrument :
 ECD_S
 ClientSampled :



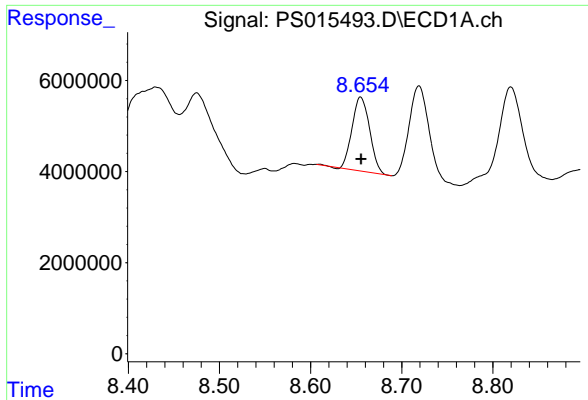
#5 DICAMBA
 R.T.: 6.906 min
 Delta R.T.: -0.046 min
 Response: 560963
 Conc: N.D.



#8 DICHLORPROP
 R.T.: 8.101 min
 Delta R.T.: -0.012 min
 Response: 4397725
 Conc: 1.91 ng/ml



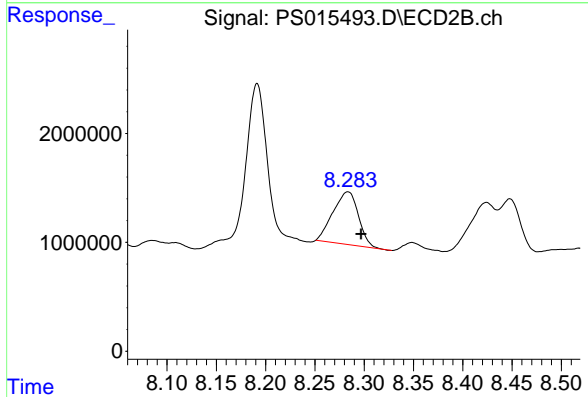
#8 DICHLORPROP
 R.T.: 7.584 min
 Delta R.T.: 0.010 min
 Response: 10467818
 Conc: 19.27 ng/ml



#10 Pentachlorophenol

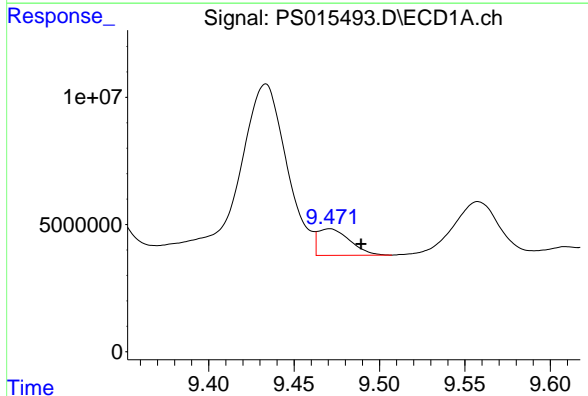
R.T.: 8.655 min
 Delta R.T.: 0.000 min
 Response: 21841033
 Conc: N.D.

Instrument :
 ECD_S
 ClientSampleId :



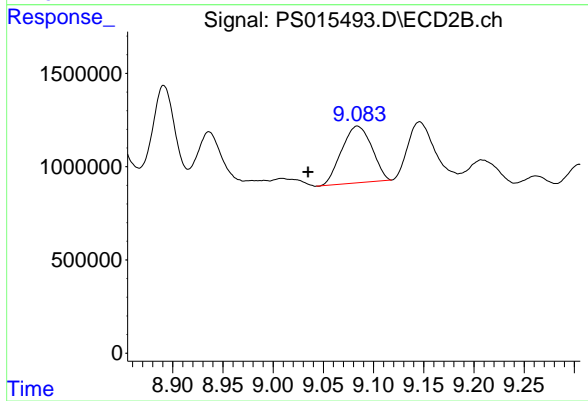
#10 Pentachlorophenol

R.T.: 8.284 min
 Delta R.T.: -0.013 min
 Response: 8627735
 Conc: 1.17 ng/ml



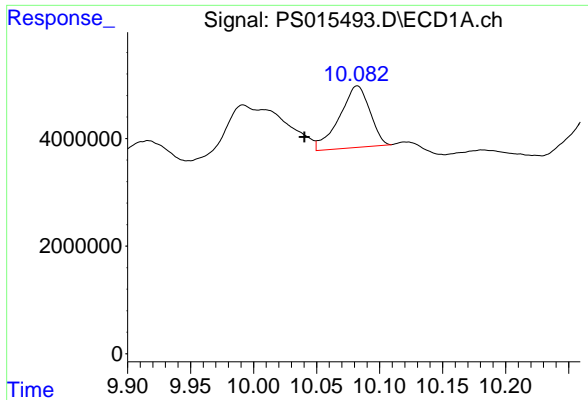
#12 2,4,5-T

R.T.: 9.471 min
 Delta R.T.: -0.018 min
 Response: 13540030
 Conc: 1.13 ng/ml



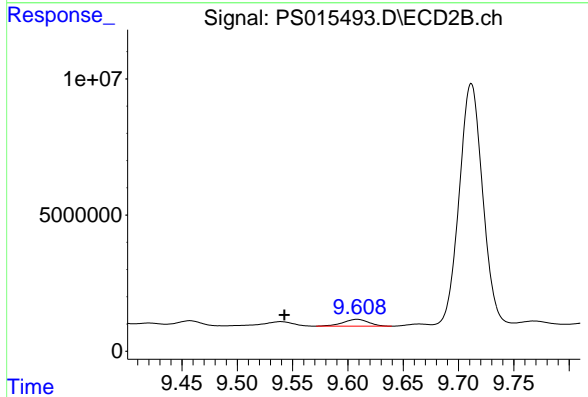
#12 2,4,5-T

R.T.: 9.084 min
 Delta R.T.: 0.049 min
 Response: 6369314
 Conc: 2.20 ng/ml

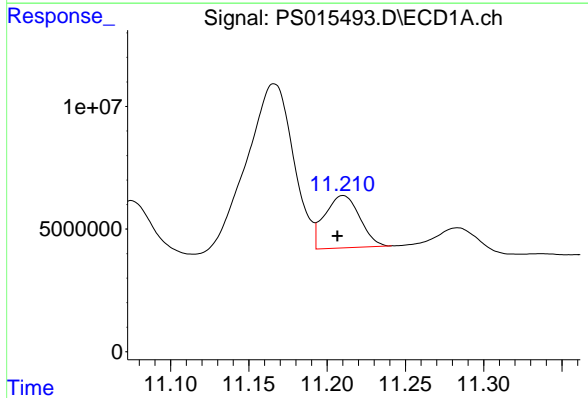


#13 2,4-DB
 R.T.: 10.082 min
 Delta R.T.: 0.042 min
 Response: 19217776
 Conc: 7.55 ng/ml

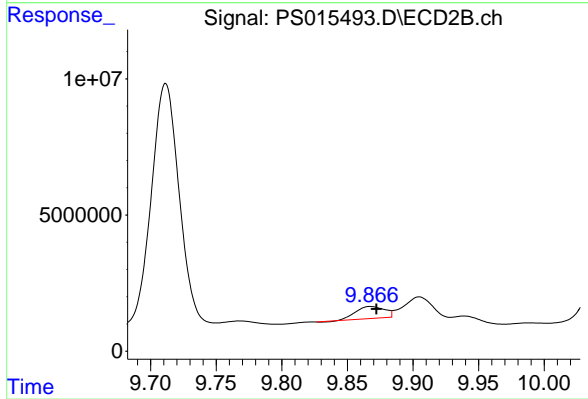
Instrument :
 ECD_S
 ClientSampled :



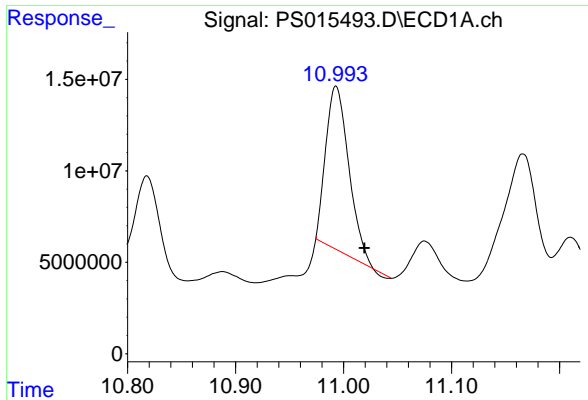
#13 2,4-DB
 R.T.: 9.608 min
 Delta R.T.: 0.066 min
 Response: 3994397
 Conc: 10.35 ng/ml



#14 DINOSEB
 R.T.: 11.210 min
 Delta R.T.: 0.004 min
 Response: 33133406
 Conc: 4.15 ng/ml

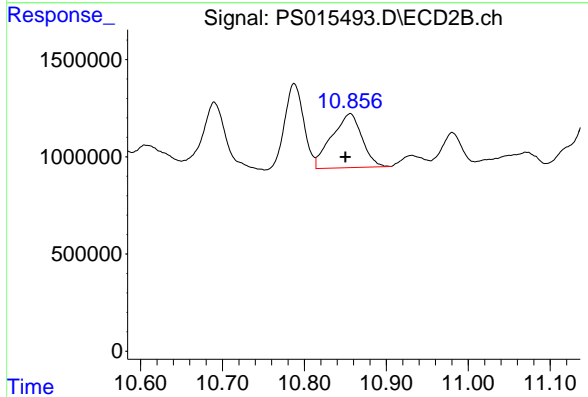


#14 DINOSEB
 R.T.: 9.868 min
 Delta R.T.: -0.004 min
 Response: 6661133
 Conc: 3.65 ng/ml

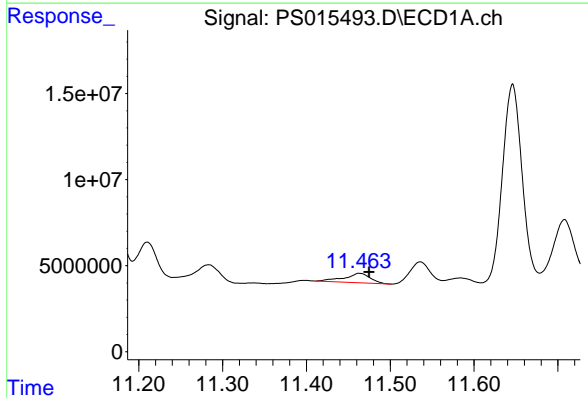


#15 Picloram
 R.T.: 10.993 min
 Delta R.T.: -0.026 min
 Response: 131534897
 Conc: 7.94 ng/ml

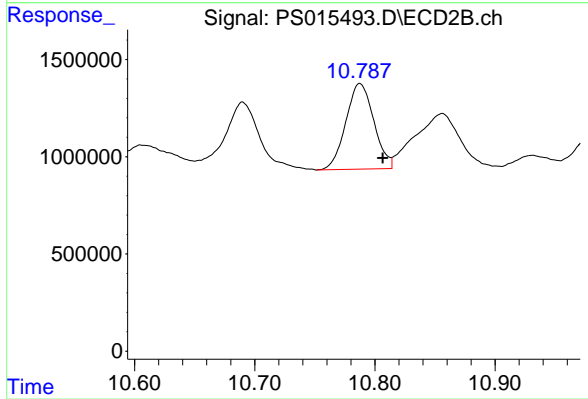
Instrument :
 ECD_S
 ClientSampleId :



#15 Picloram
 R.T.: 10.856 min
 Delta R.T.: 0.006 min
 Response: 7119248
 Conc: 1.71 ng/ml



#16 DCPA
 R.T.: 11.463 min
 Delta R.T.: -0.012 min
 Response: 11806104
 Conc: N.D.



#16 DCPA
 R.T.: 10.788 min
 Delta R.T.: -0.019 min
 Response: 7141508
 Conc: 1.66 ng/ml