

Data Path : Z:\pestpcbsrv\HPCHEM1\ECD_S\Data\PS061121\
 Data File : PS015447.D
 Signal(s) : Signal #1: ECD1A.ch Signal #2: ECD2B.ch
 Acq On : 12 Jun 2021 16:32
 Operator : DD\AJ
 Sample : M2612-23RE
 Misc :
 ALS Vial : 48 Sample Multiplier: 1

Instrument :
 ECD_S
 ClientSampleId :
 18-B12(14-18)RE

Integration File signal 1: autoint1.e
 Integration File signal 2: autoint2.e
 Quant Time: Jun 14 02:21:45 2021
 Quant Method : Z:\pestpcbsrv\HPCHEM1\ECD_S\Method\PS052821.M
 Quant Title : 8080.M
 QLast Update : Fri May 28 14:34:22 2021
 Response via : Initial Calibration
 Integrator: ChemStation

Volume Inj. : 2 µl
 Signal #1 Phase : Rtx-CLPesticides Signal #2 Phase: Rtx-CLPesticides2
 Signal #1 Info : 30M x 0.32mm x0.5 Signal #2 Info : 30M x 0.32mm x 0.25µm

Compound	RT#1	RT#2	Resp#1	Resp#2	ng/ml	ng/ml

System Monitoring Compounds						
4) S 2,4-DCAA	7.227	6.781	2074.4E6	358.2E6	823.035	668.530

Target Compounds

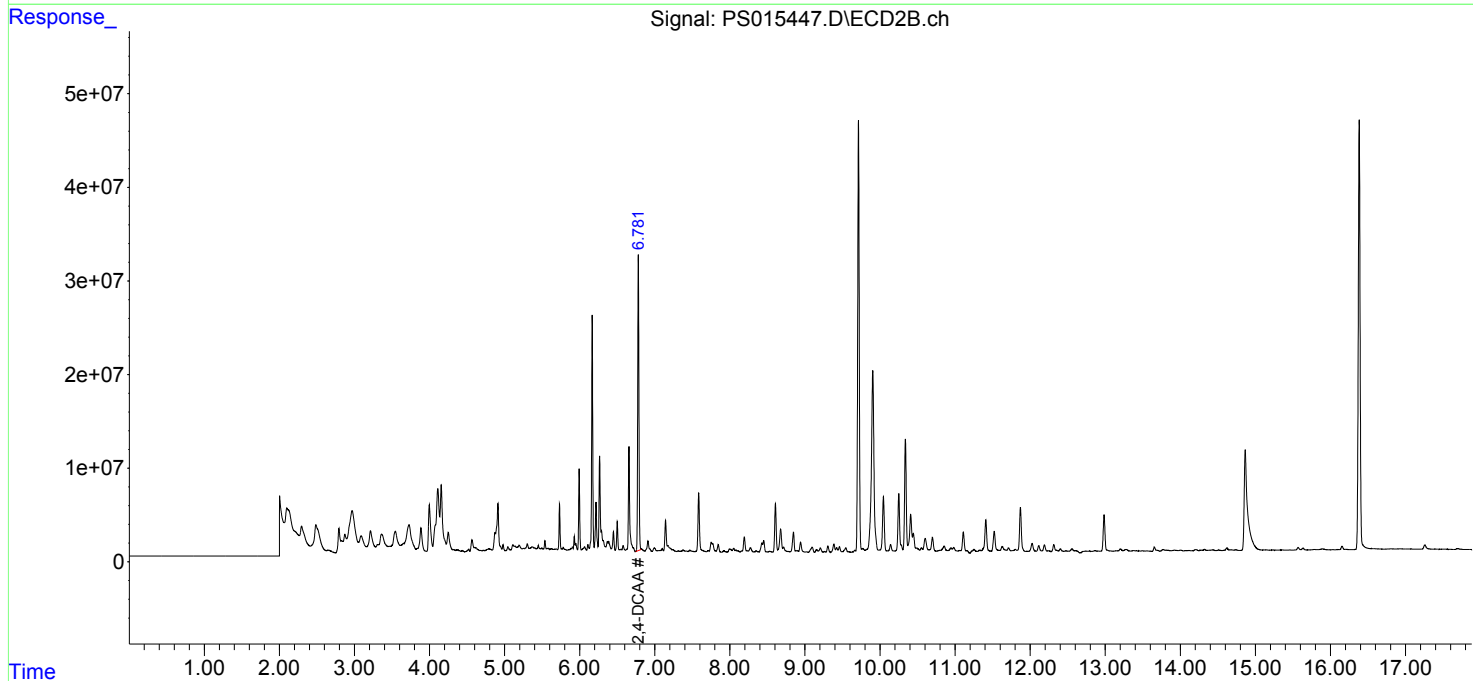
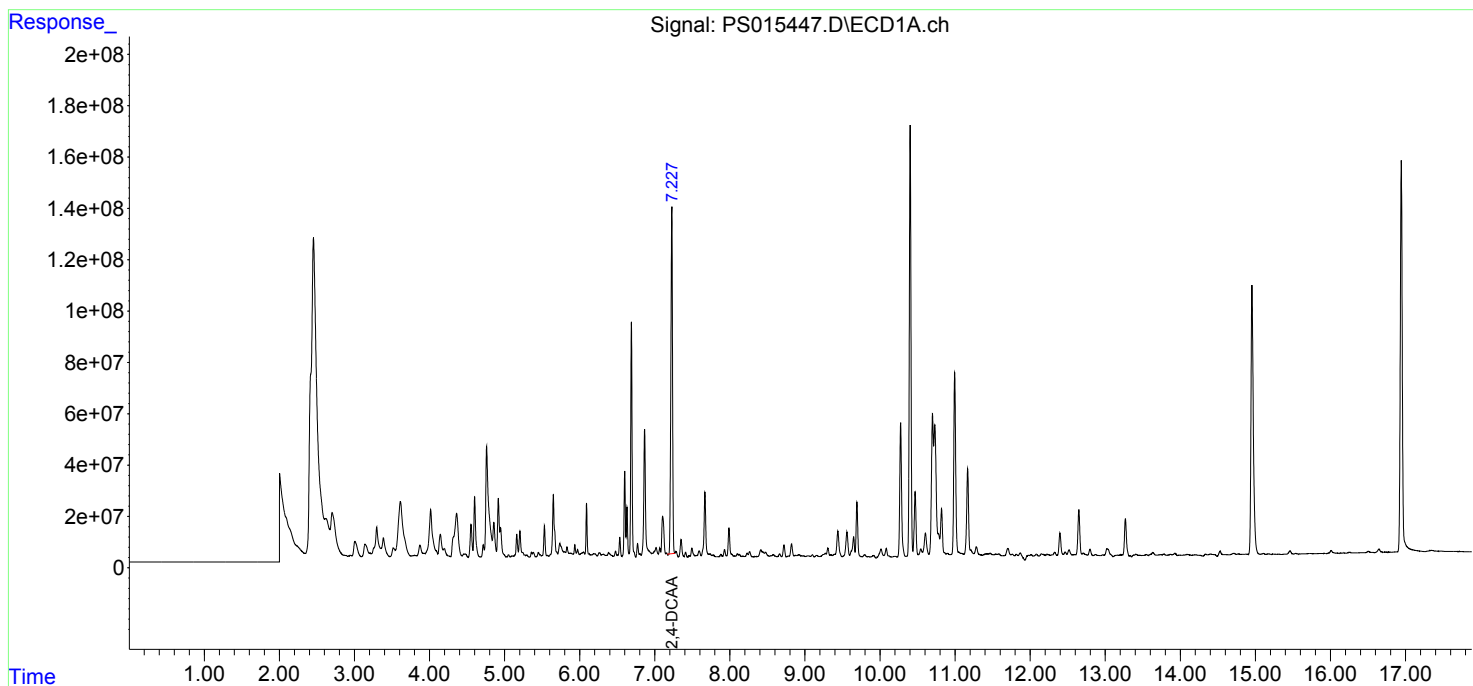
(f)=RT Delta > 1/2 Window (#)=Amounts differ by > 25% (m)=manual int.

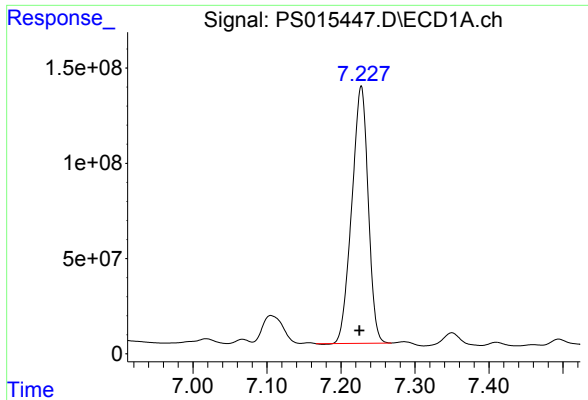
Data Path : Z:\pestpcbsrv\HPCHEM1\ECD_S\Data\PS061121\
 Data File : PS015447.D
 Signal(s) : Signal #1: ECD1A.ch Signal #2: ECD2B.ch
 Acq On : 12 Jun 2021 16:32
 Operator : DD\AJ
 Sample : M2612-23RE
 Misc :
 ALS Vial : 48 Sample Multiplier: 1

Instrument :
 ECD_S
 ClientSampleId :
 18-B12(14-18)RE

Integration File signal 1: autoint1.e
 Integration File signal 2: autoint2.e
 Quant Time: Jun 14 02:21:45 2021
 Quant Method : Z:\pestpcbsrv\HPCHEM1\ECD_S\Method\PS052821.M
 Quant Title : 8080.M
 QLast Update : Fri May 28 14:34:22 2021
 Response via : Initial Calibration
 Integrator: ChemStation

Volume Inj. : 2 µl
 Signal #1 Phase : Rtx-CLPesticides Signal #2 Phase: Rtx-CLPesticides2
 Signal #1 Info : 30M x 0.32mm x0.5 Signal #2 Info : 30M x 0.32mm x 0.25µm





#4 2,4-DCAA

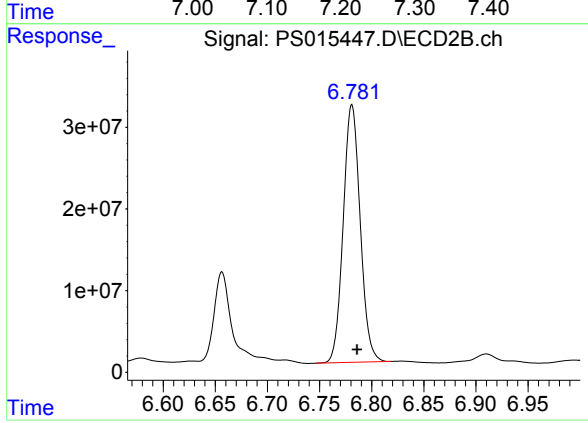
R.T.: 7.227 min

Delta R.T.: 0.002 min

Response: 2074356124

Conc: 823.03 ng/ml

Instrument :
ECD_S
ClientSampleId :
18-B12(14-18)RE



#4 2,4-DCAA

R.T.: 6.781 min

Delta R.T.: -0.005 min

Response: 358179084

Conc: 668.53 ng/ml