

Data Path : Z:\pestpcbsrv\HPCHEM1\ECD\_S\Data\PS061121\  
 Data File : PS015457.D  
 Signal(s) : Signal #1: ECD1A.ch Signal #2: ECD2B.ch  
 Acq On : 12 Jun 2021 20:58  
 Operator : DD\AJ  
 Sample : M2603-02MSD  
 Misc :  
 ALS Vial : 56 Sample Multiplier: 1

**Instrument :**  
 ECD\_S  
**ClientSampleId :**  
 FAM4-WC1MSD

**Manual Integrations**  
**APPROVED**  
 Ankita  
 6/17/2021 9:32:28 AM

Integration File signal 1: autoint1.e  
 Integration File signal 2: autoint2.e  
 Quant Time: Jun 14 02:25:07 2021  
 Quant Method : Z:\pestpcbsrv\HPCHEM1\ECD\_S\Method\PS052821.M  
 Quant Title : 8080.M  
 QLast Update : Fri May 28 14:34:22 2021  
 Response via : Initial Calibration  
 Integrator: ChemStation

Volume Inj. : 2 µl  
 Signal #1 Phase : Rtx-CLPesticides Signal #2 Phase: Rtx-CLPesticides2  
 Signal #1 Info : 30M x 0.32mm x0.5 Signal #2 Info : 30M x 0.32mm x 0.25µm

	Compound	RT#1	RT#2	Resp#1	Resp#2	ng/ml	ng/ml
-----							
System Monitoring Compounds							
4) S	2,4-DCAA	7.227	6.781	1596.7E6	266.9E6	633.516	498.221m
Target Compounds							
1) T	Dalapon	3.042	2.522	1232.3E6	301.9E6	468.858	461.376
2) T	3,5-DICHL...	6.439	5.967	1883.1E6	395.9E6	546.067	490.046m
5) T	DICAMBA	7.422	6.946	4998.5E6	1059.2E6	524.406	478.645
6) T	MCPD	7.590	7.042	427.3E6	92979014	59.383	52.617
7) T	MCPA	7.739	7.254	541.4E6	141.3E6	53.943	54.380
8) T	DICHLORPROP	8.116	7.567	1302.5E6	290.4E6	565.535	534.555
9) T	2,4-D	8.344	7.857	1605.3E6	369.4E6	630.014	573.508m
10) T	Pentachlo...	8.657	8.289	17722.9E6	3687.7E6	547.496	500.958
11) T	2,4,5-TP ...	9.207	8.649	7837.3E6	1787.9E6	631.477	616.109m
12) T	2,4,5-T	9.490	9.026	6977.7E6	1569.2E6	580.944	542.033m
13) T	2,4-DB	10.043	9.533	967.9E6	202.3E6	380.074	524.324 #
14) T	DINOSEB	11.204	9.861	4496.0E6	907.4E6	562.733	496.890m
15) T	Picloram	11.018	10.839	7725.6E6	1761.1E6	466.333m	424.064
16) T	DCPA	11.472	10.794	8747.2E6	1998.4E6	518.750	463.565
-----							

(f)=RT Delta > 1/2 Window (#)=Amounts differ by > 25% (m)=manual int.

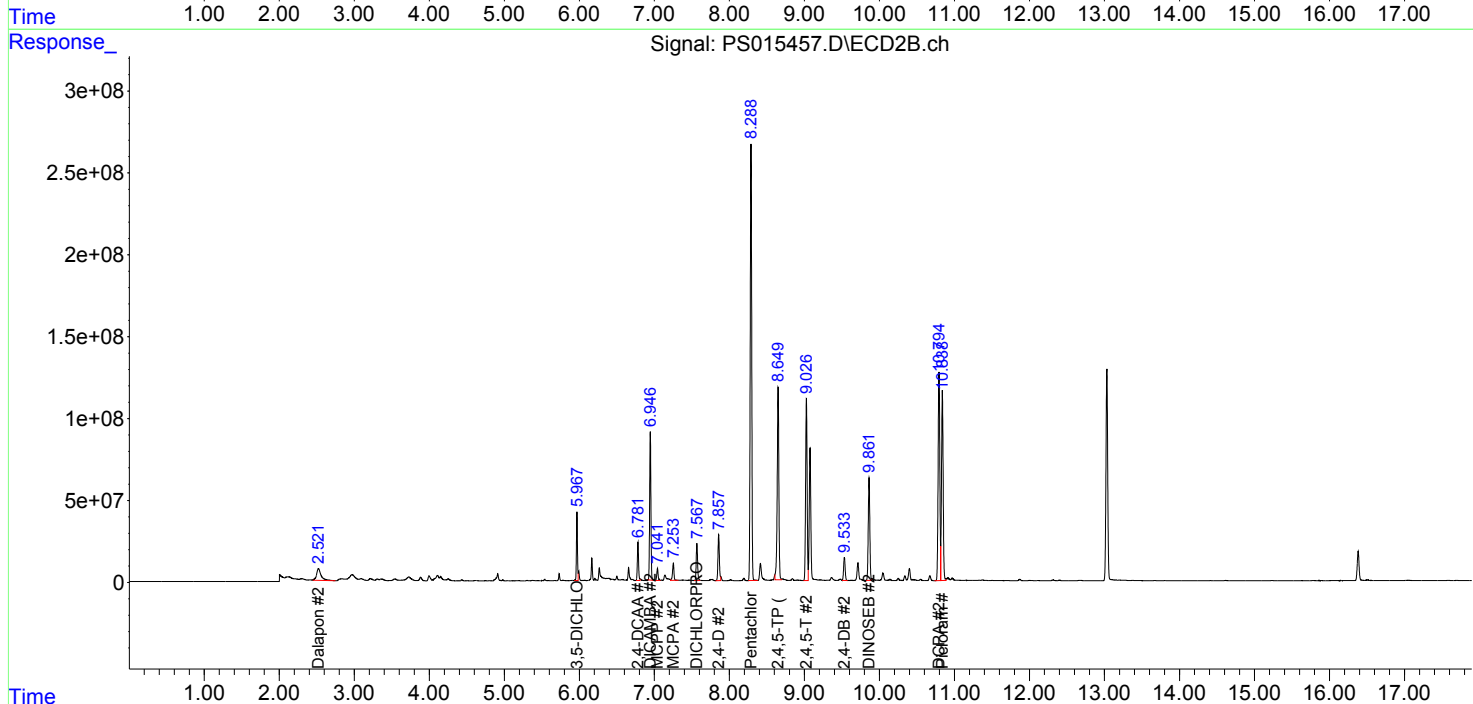
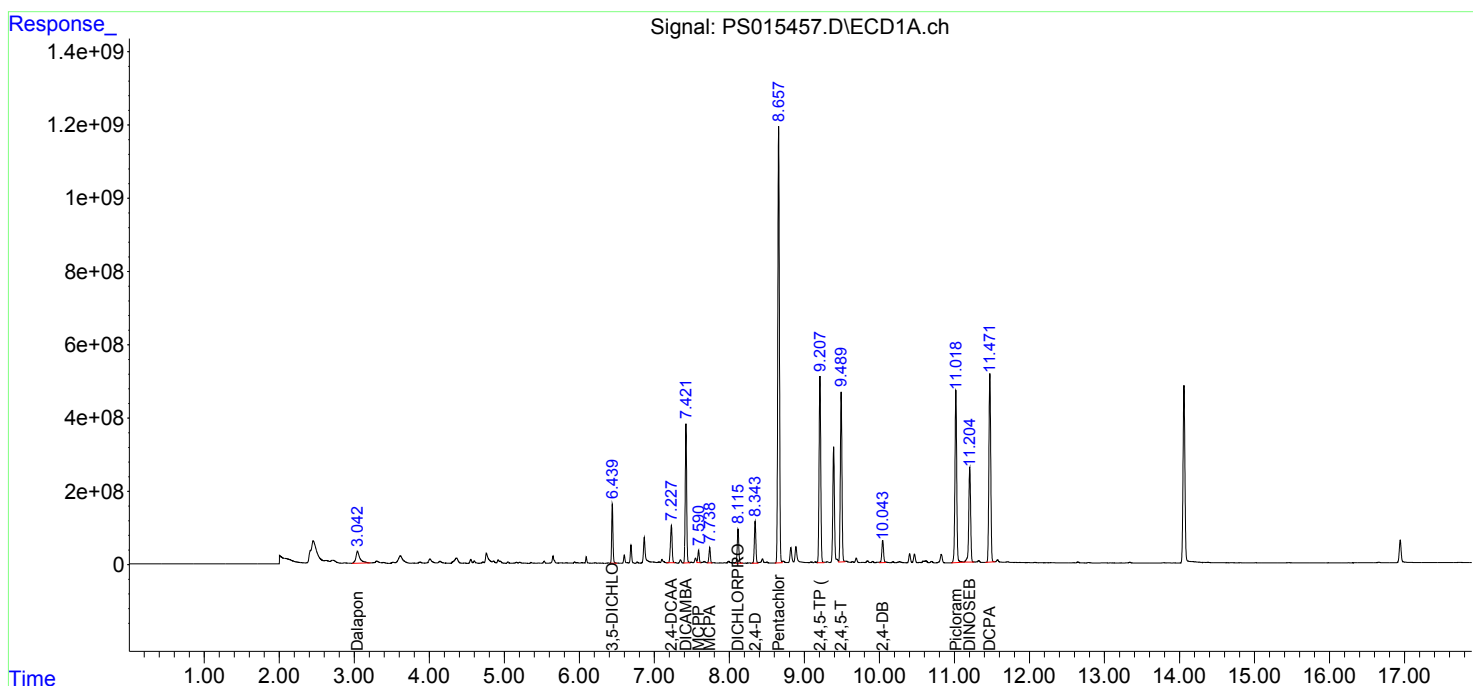
Data Path : Z:\pestpcbsrv\HPCHEM1\ECD\_S\Data\PS061121\  
 Data File : PS015457.D  
 Signal(s) : Signal #1: ECD1A.ch Signal #2: ECD2B.ch  
 Acq On : 12 Jun 2021 20:58  
 Operator : DD\AJ  
 Sample : M2603-02MSD  
 Misc :  
 ALS Vial : 56 Sample Multiplier: 1

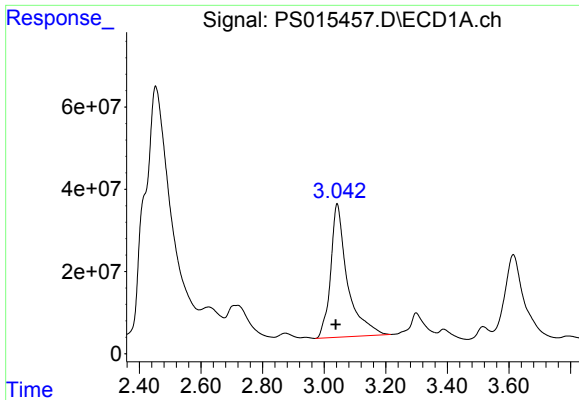
**Instrument :**  
 ECD\_S  
**Client Sampled :**  
 FAM4-WC1MSD

**Manual Integrations**  
**APPROVED**  
 Ankita  
 6/17/2021 9:32:28 AM

Integration File signal 1: autoint1.e  
 Integration File signal 2: autoint2.e  
 Quant Time: Jun 14 02:25:07 2021  
 Quant Method : Z:\pestpcbsrv\HPCHEM1\ECD\_S\Method\PS052821.M  
 Quant Title : 8080.M  
 QLast Update : Fri May 28 14:34:22 2021  
 Response via : Initial Calibration  
 Integrator: ChemStation

Volume Inj. : 2 µl  
 Signal #1 Phase : Rtx-CLPesticides Signal #2 Phase: Rtx-CLPesticides2  
 Signal #1 Info : 30M x 0.32mm x0.5 Signal #2 Info : 30M x 0.32mm x 0.25µm

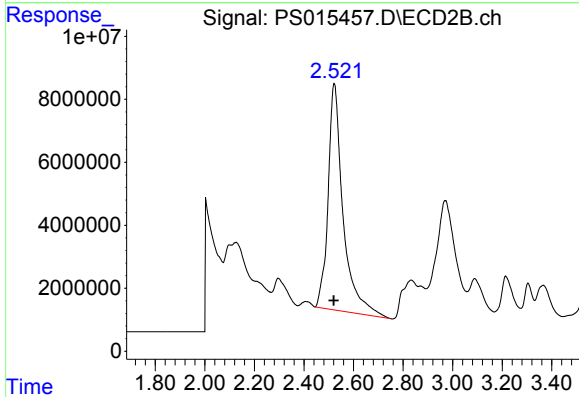




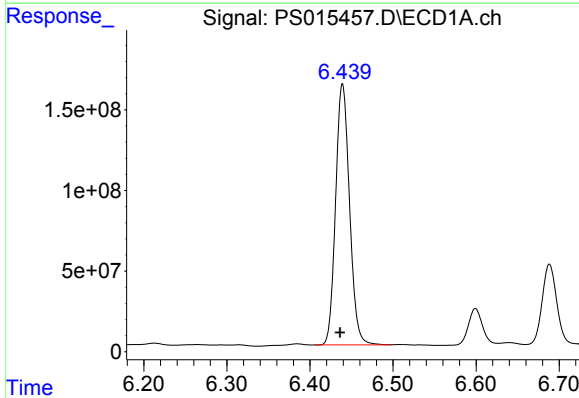
#1 Dalapon  
 R.T.: 3.042 min  
 Delta R.T.: 0.005 min  
 Response: 1232336371  
 Conc: 468.86 ng/ml

Instrument :  
 ECD\_S  
 ClientSampleId :  
 FAM4-WC1MSD

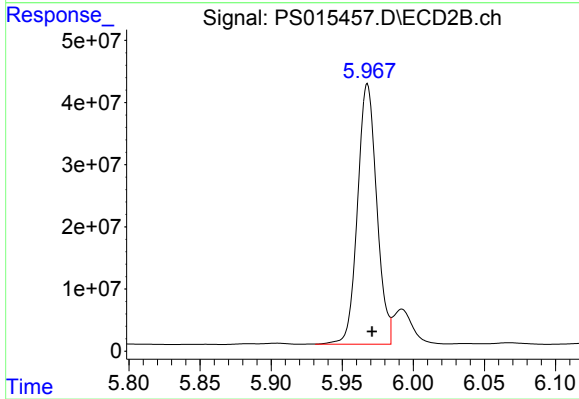
Manual Integrations  
**APPROVED**  
 Ankita  
 6/17/2021 9:32:28 AM



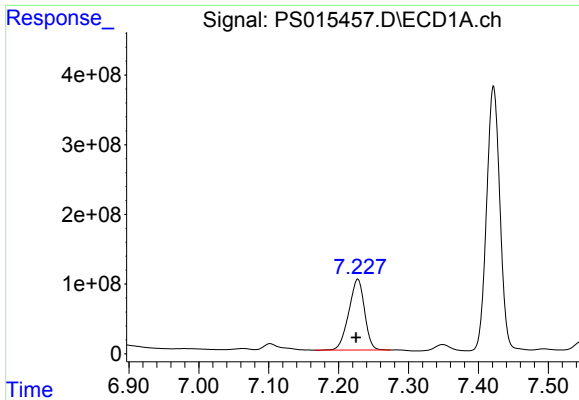
#1 Dalapon  
 R.T.: 2.522 min  
 Delta R.T.: 0.002 min  
 Response: 301948730  
 Conc: 461.38 ng/ml



#2 3,5-DICHLOROBENZOIC ACID  
 R.T.: 6.439 min  
 Delta R.T.: 0.003 min  
 Response: 1883064477  
 Conc: 546.07 ng/ml



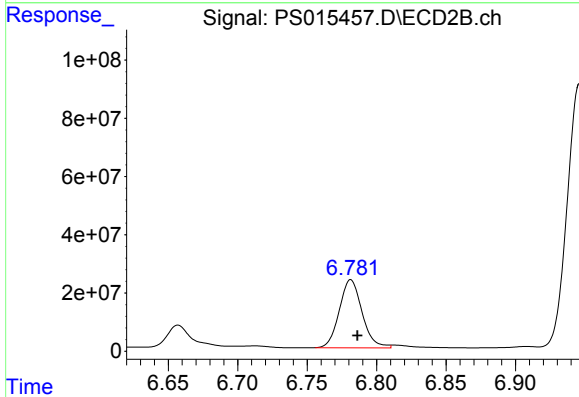
#2 3,5-DICHLOROBENZOIC ACID  
 R.T.: 5.967 min  
 Delta R.T.: -0.004 min  
 Response: 395881382  
 Conc: 490.05 ng/ml m



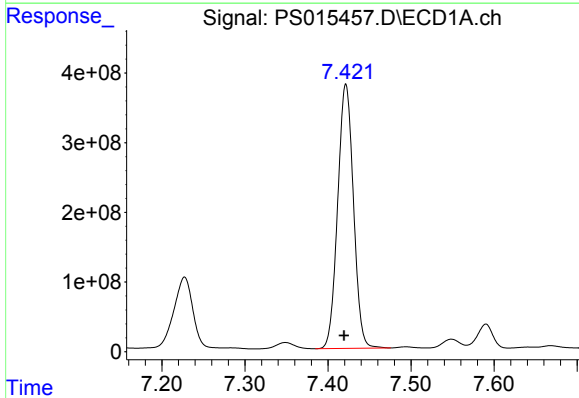
#4 2,4-DCAA  
 R.T.: 7.227 min  
 Delta R.T.: 0.002 min  
 Response: 1596698546  
 Conc: 633.52 ng/ml

Instrument :  
 ECD\_S  
 ClientSampled :  
 FAM4-WC1MSD

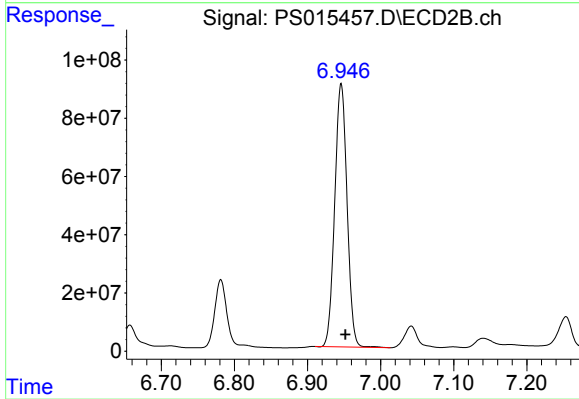
Manual Integrations  
 APPROVED  
 Ankita  
 6/17/2021 9:32:28 AM



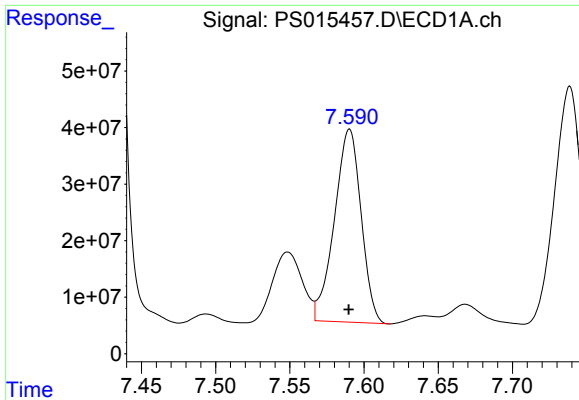
#4 2,4-DCAA  
 R.T.: 6.781 min  
 Delta R.T.: -0.005 min  
 Response: 266932633  
 Conc: 498.22 ng/ml m



#5 DICAMBA  
 R.T.: 7.422 min  
 Delta R.T.: 0.002 min  
 Response: 4998504585  
 Conc: 524.41 ng/ml



#5 DICAMBA  
 R.T.: 6.946 min  
 Delta R.T.: -0.006 min  
 Response: 1059210458  
 Conc: 478.64 ng/ml

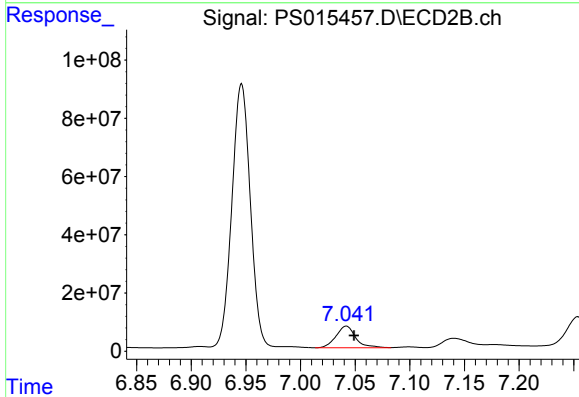


#6 MCPP

R.T.: 7.590 min  
 Delta R.T.: 0.000 min  
 Response: 427341547  
 Conc: 59.38 ug/ml

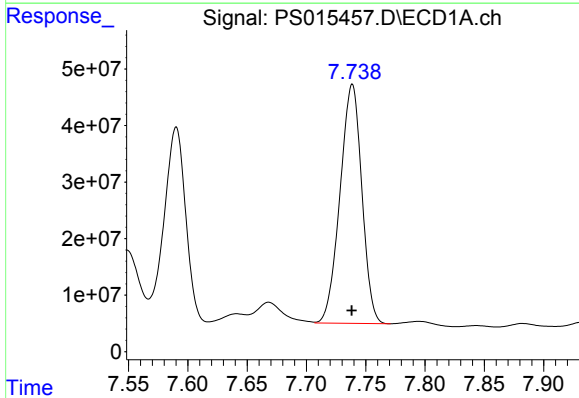
Instrument :  
 ECD\_S  
 ClientSampled :  
 FAM4-WC1MSD

Manual Integrations  
 APPROVED  
 Ankita  
 6/17/2021 9:32:28 AM



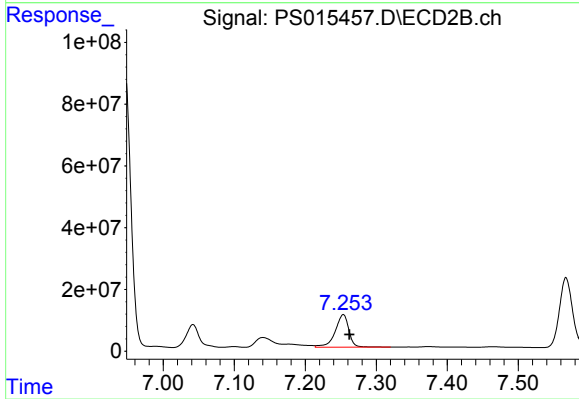
#6 MCPP

R.T.: 7.042 min  
 Delta R.T.: -0.007 min  
 Response: 92979014  
 Conc: 52.62 ug/ml



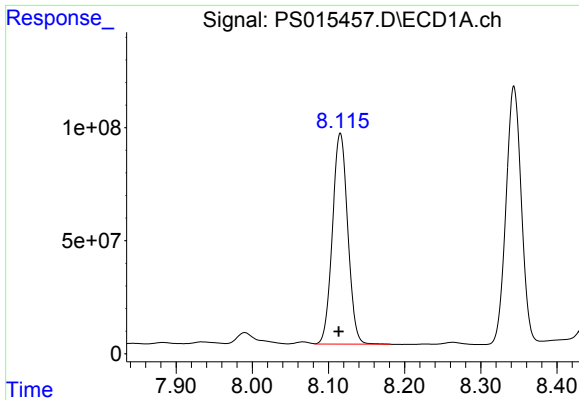
#7 MCPA

R.T.: 7.739 min  
 Delta R.T.: 0.000 min  
 Response: 541397990  
 Conc: 53.94 ug/ml



#7 MCPA

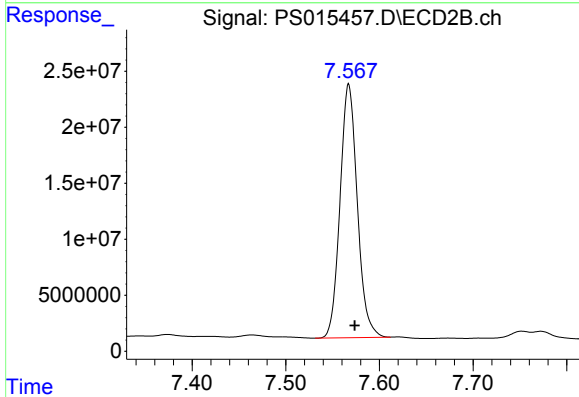
R.T.: 7.254 min  
 Delta R.T.: -0.009 min  
 Response: 141320831  
 Conc: 54.38 ug/ml



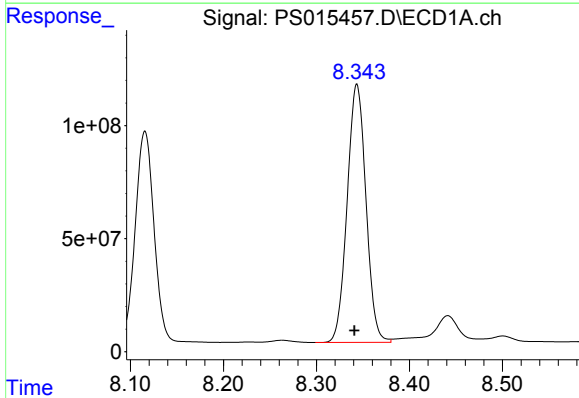
#8 DICHLORPROP  
 R.T.: 8.116 min  
 Delta R.T.: 0.002 min  
 Response: 1302484350  
 Conc: 565.53 ng/ml

**Instrument :**  
 ECD\_S  
**ClientSampled :**  
 FAM4-WC1MSD

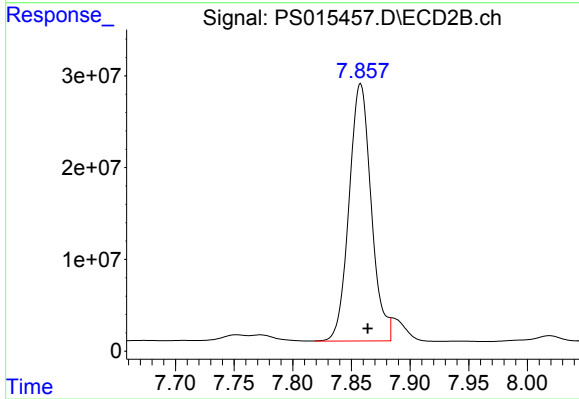
**Manual Integrations**  
**APPROVED**  
 Ankita  
 6/17/2021 9:32:28 AM



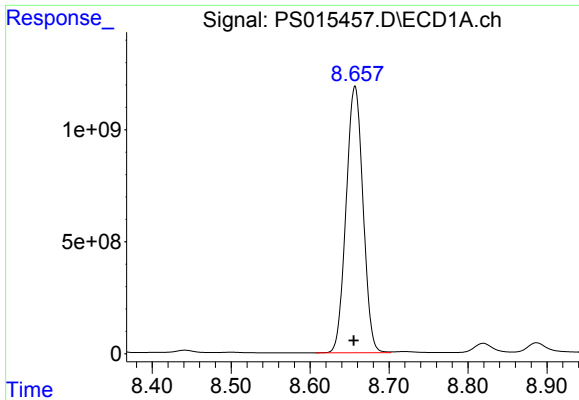
#8 DICHLORPROP  
 R.T.: 7.567 min  
 Delta R.T.: -0.007 min  
 Response: 290404556  
 Conc: 534.56 ng/ml



#9 2,4-D  
 R.T.: 8.344 min  
 Delta R.T.: 0.003 min  
 Response: 1605348038  
 Conc: 630.01 ng/ml



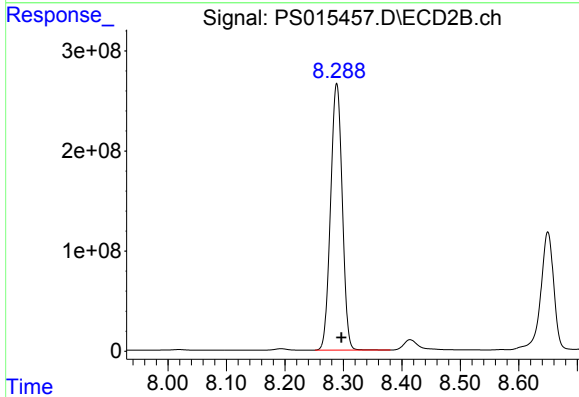
#9 2,4-D  
 R.T.: 7.857 min  
 Delta R.T.: -0.007 min  
 Response: 369353476  
 Conc: 573.51 ng/ml m



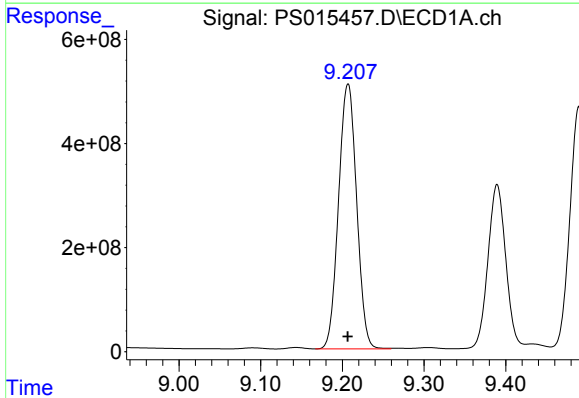
#10 Pentachlorophenol  
 R.T.: 8.657 min  
 Delta R.T.: 0.002 min  
 Response: 17722862576  
 Conc: 547.50 ng/ml

**Instrument :**  
 ECD\_S  
**ClientSampleId :**  
 FAM4-WC1MSD

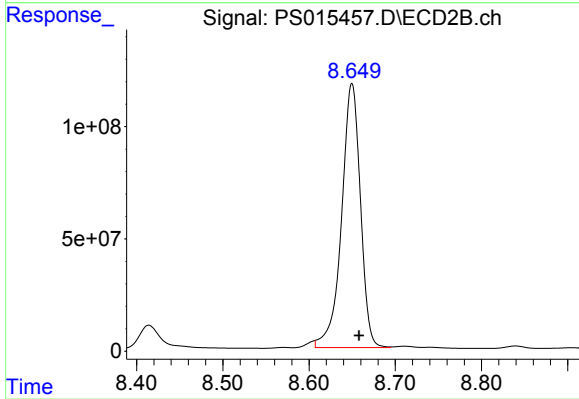
**Manual Integrations**  
**APPROVED**  
 Ankita  
 6/17/2021 9:32:28 AM



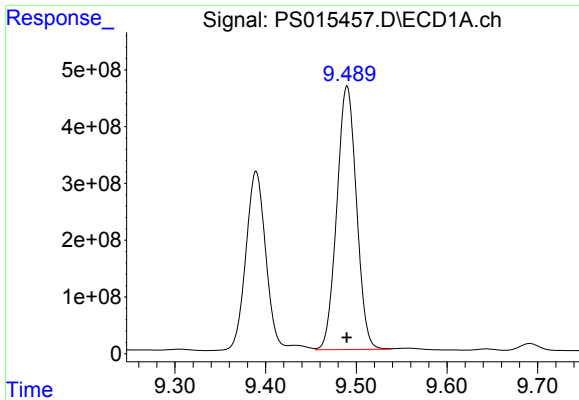
#10 Pentachlorophenol  
 R.T.: 8.289 min  
 Delta R.T.: -0.008 min  
 Response: 3687652317  
 Conc: 500.96 ng/ml



#11 2,4,5-TP (SILVEX)  
 R.T.: 9.207 min  
 Delta R.T.: 0.000 min  
 Response: 7837264741  
 Conc: 631.48 ng/ml



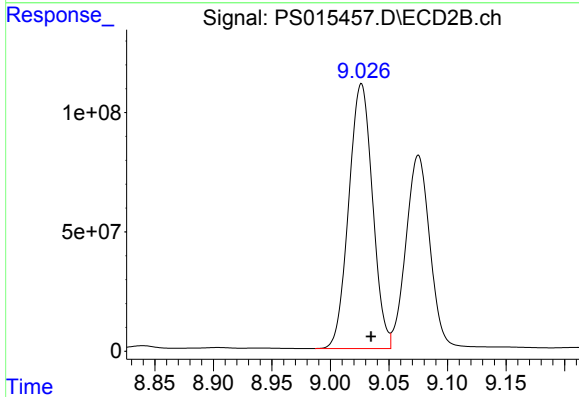
#11 2,4,5-TP (SILVEX)  
 R.T.: 8.649 min  
 Delta R.T.: -0.009 min  
 Response: 1787910460  
 Conc: 616.11 ng/ml m



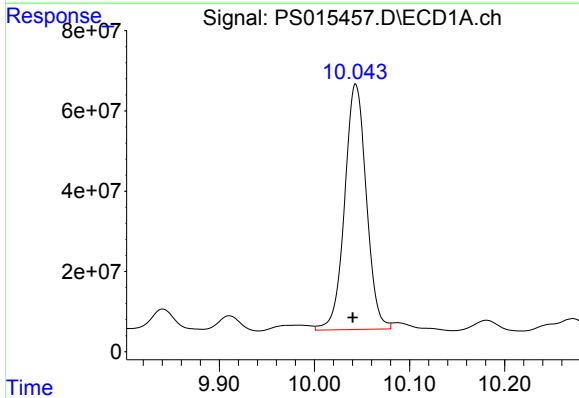
#12 2,4,5-T  
 R.T.: 9.490 min  
 Delta R.T.: 0.000 min  
 Response: 6977660058  
 Conc: 580.94 ng/ml

**Instrument :**  
 ECD\_S  
**ClientSampled :**  
 FAM4-WC1MSD

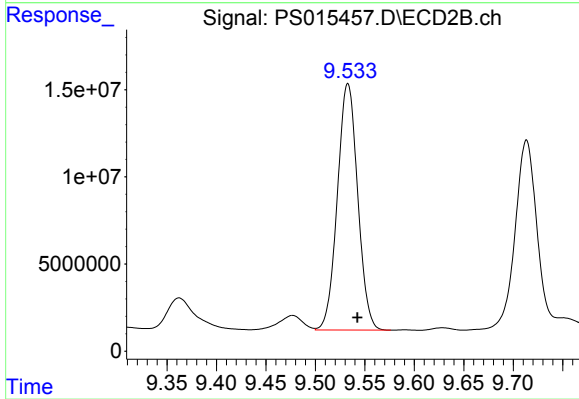
**Manual Integrations**  
**APPROVED**  
 Ankita  
 6/17/2021 9:32:28 AM



#12 2,4,5-T  
 R.T.: 9.026 min  
 Delta R.T.: -0.008 min  
 Response: 1569185305  
 Conc: 542.03 ng/ml m

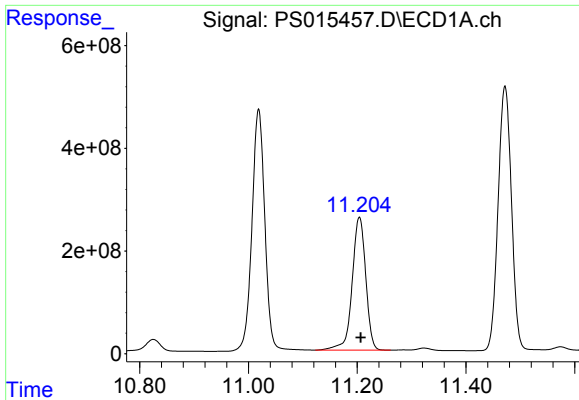


#13 2,4-DB  
 R.T.: 10.043 min  
 Delta R.T.: 0.003 min  
 Response: 967868407  
 Conc: 380.07 ng/ml



#13 2,4-DB  
 R.T.: 9.533 min  
 Delta R.T.: -0.010 min  
 Response: 202257524  
 Conc: 524.32 ng/ml

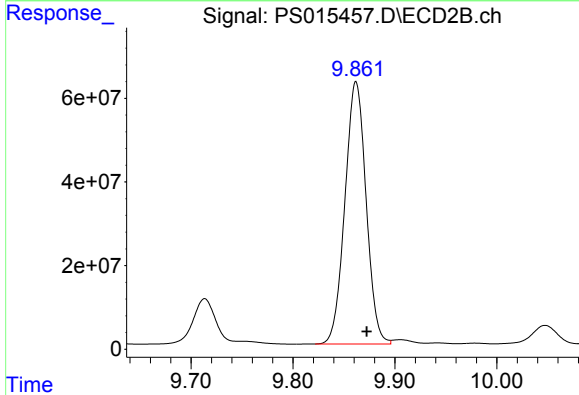




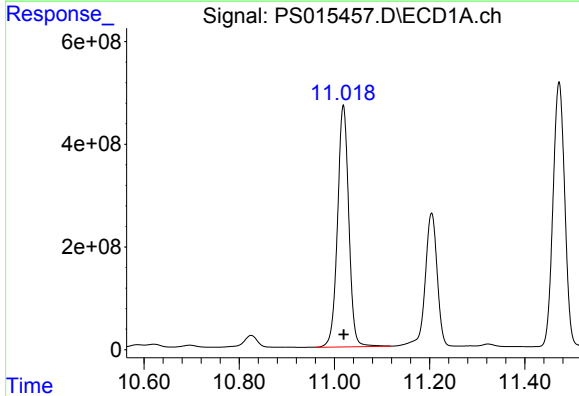
#14 DINOSEB  
 R.T.: 11.204 min  
 Delta R.T.: -0.002 min  
 Response: 4495994638  
 Conc: 562.73 ng/ml

**Instrument :**  
 ECD\_S  
**ClientSampled :**  
 FAM4-WC1MSD

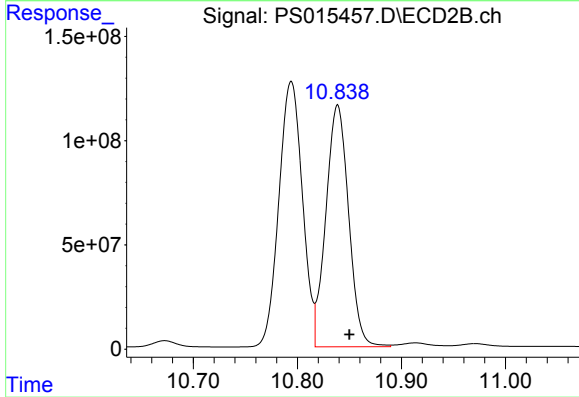
**Manual Integrations**  
**APPROVED**  
 Ankita  
 6/17/2021 9:32:28 AM



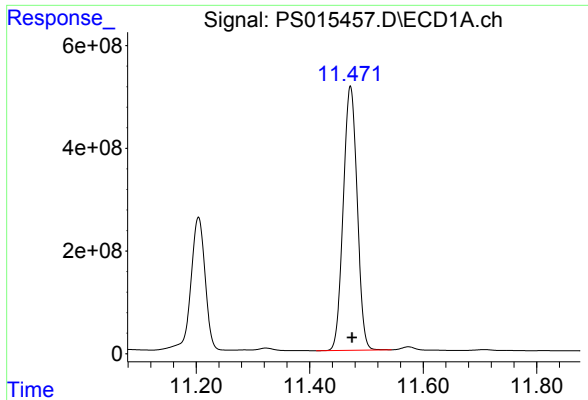
#14 DINOSEB  
 R.T.: 9.861 min  
 Delta R.T.: -0.011 min  
 Response: 907391103  
 Conc: 496.89 ng/ml m



#15 Picloram  
 R.T.: 11.018 min  
 Delta R.T.: 0.000 min  
 Response: 7725642227  
 Conc: 466.33 ng/ml m



#15 Picloram  
 R.T.: 10.839 min  
 Delta R.T.: -0.011 min  
 Response: 1761090530  
 Conc: 424.06 ng/ml



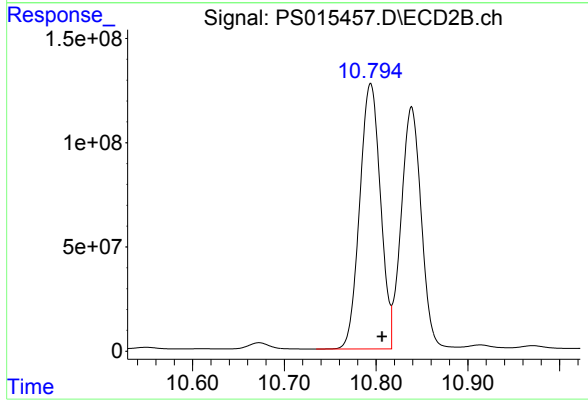
#16 DCPA

R.T.: 11.472 min  
Delta R.T.: -0.003 min  
Response: 8747203479  
Conc: 518.75 ng/ml

Instrument :  
ECD\_S  
ClientSampleId :  
FAM4-WC1MSD

Manual Integrations  
APPROVED

Ankita  
6/17/2021 9:32:28 AM



#16 DCPA

R.T.: 10.794 min  
Delta R.T.: -0.012 min  
Response: 1998427866  
Conc: 463.57 ng/ml