

Data Path : Z:\pestpcbsrv\HPCHEM1\ECD_S\Data\PS061521\
 Data File : PS015670.D
 Signal(s) : Signal #1: ECD1A.ch Signal #2: ECD2B.ch
 Acq On : 16 Jun 2021 21:19
 Operator : DD\AJ
 Sample : M2625-11
 Misc :
 ALS Vial : 24 Sample Multiplier: 1

Instrument :
 ECD_S
 ClientSampleId :
 18-B12(178-182)

Integration File signal 1: autoint1.e
 Integration File signal 2: autoint2.e
 Quant Time: Jun 17 01:52:16 2021
 Quant Method : Z:\pestpcbsrv\HPCHEM1\ECD_S\Method\PS061521.M
 Quant Title : 8080.M
 QLast Update : Tue Jun 15 18:15:49 2021
 Response via : Initial Calibration
 Integrator: ChemStation

Volume Inj. : 2 µl
 Signal #1 Phase : Rtx-CLPesticides Signal #2 Phase: Rtx-CLPesticides2
 Signal #1 Info : 30M x 0.32mm x0.5 Signal #2 Info : 30M x 0.32mm x 0.25µm

Compound	RT#1	RT#2	Resp#1	Resp#2	ng/ml	ng/ml

System Monitoring Compounds						
4) S 2,4-DCAA	7.191	6.769	904.5E6	283.1E6	544.386	561.918
Target Compounds						
1) T Dalapon	2.980f	2.485	46177119	26542571	22.879	40.867 #
2) T 3,5-DICHL...	6.431	5.985	4875750	68572041	2.172	90.925 #
3) T 4-Nitroph...	0.000	6.425	0	11133032	N.D.	36.391
5) T DICAMBA	7.395	0.000	50173866	0	7.804	N.D. #
6) T MCPP	7.550	7.064	24443580	13198788	4.501	7.919 #
7) T MCPA	7.681	7.273	107.3E6	4526921	13.701	1.765 #
8) T DICHLORPROP	8.081	7.505f	43346169	19040091	27.376	36.775 #
9) T 2,4-D	8.370f	7.846	43517629	14082784	24.831	22.704
10) T Pentachlo...	8.599	8.336f	4340375	18856024	<MDL	2.685 #
12) T 2,4,5-T	9.388f	0.000	2811785	0	<MDL	N.D. #
13) T 2,4-DB	9.993	0.000	119.3E6	0	58.308	N.D. #
14) T DINOSEB	11.122f	9.866	190.0E6	74146837	29.331	36.813 #
15) T Picloram	11.004	10.828	75842421	56229620	5.548	13.370 #
16) T DCPA	11.449	10.757	47595956	22796798	3.599	5.422 #

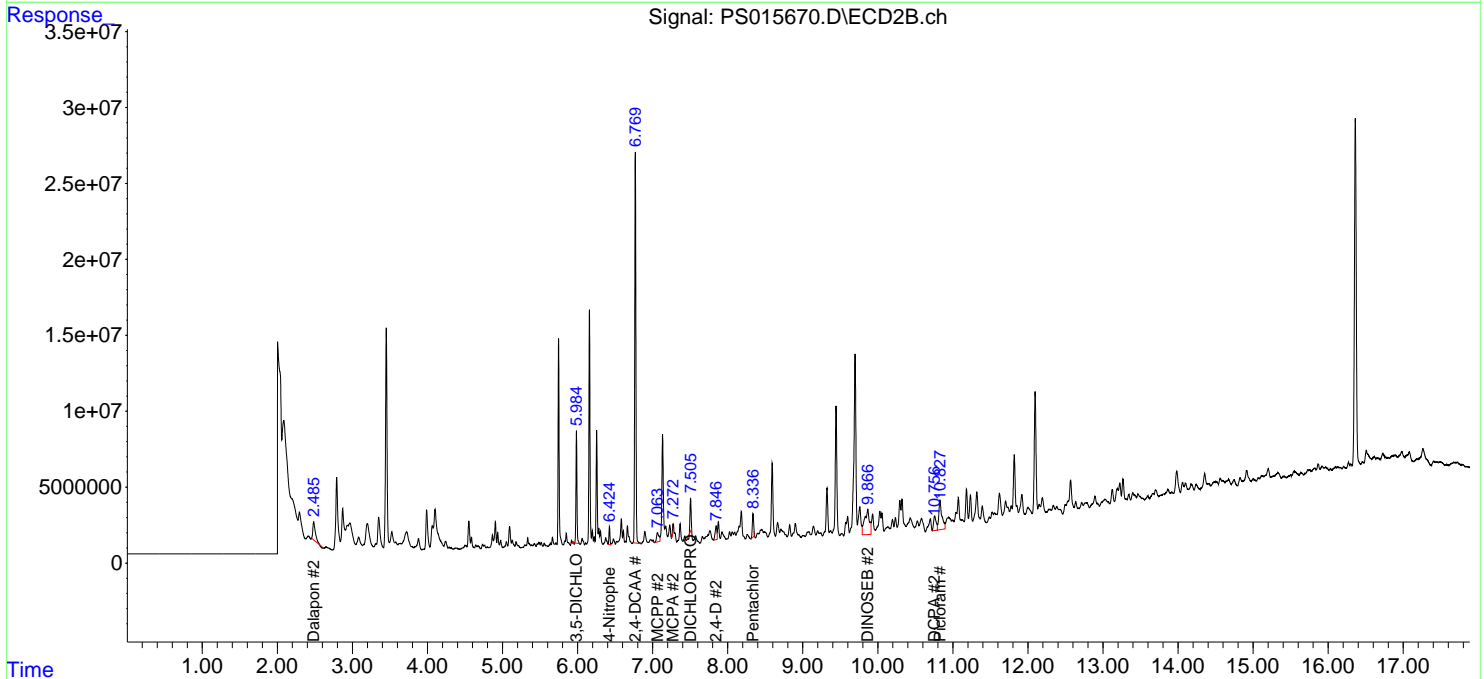
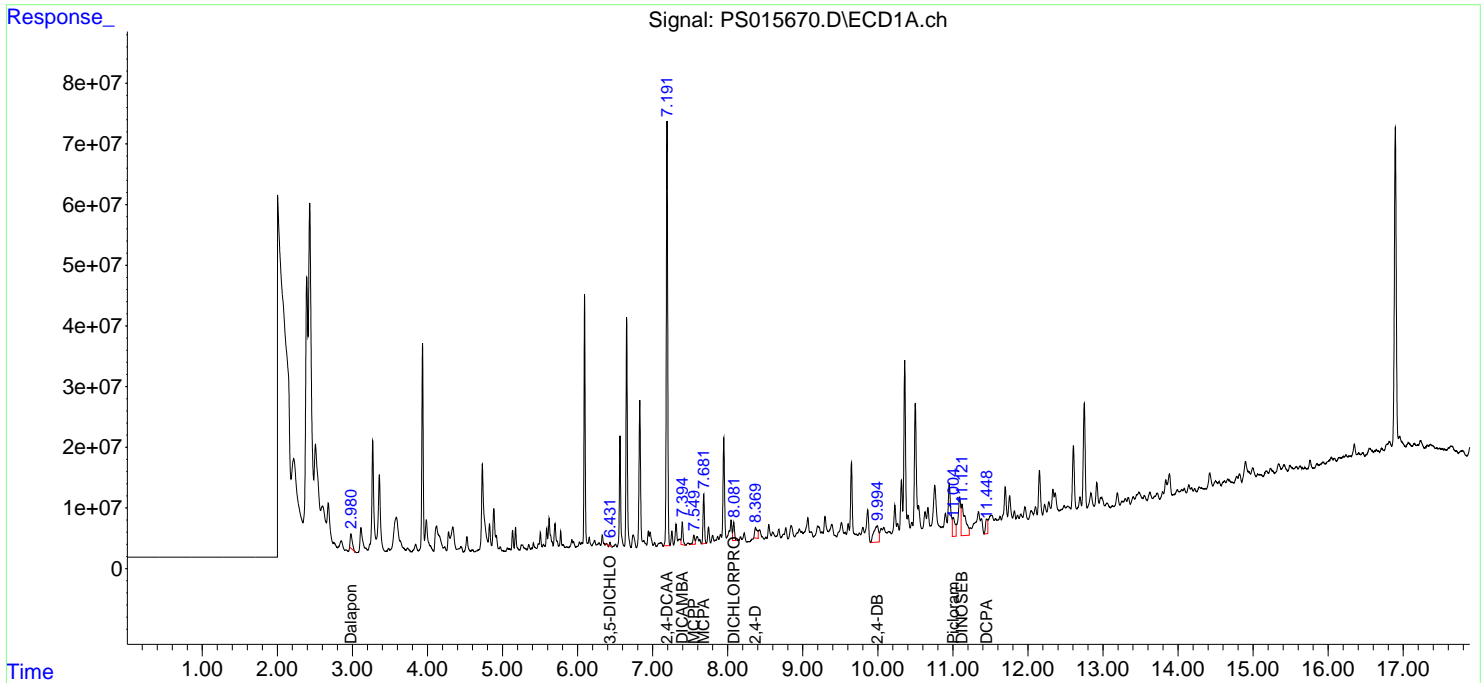
(f)=RT Delta > 1/2 Window (#)=Amounts differ by > 25% (m)=manual int.

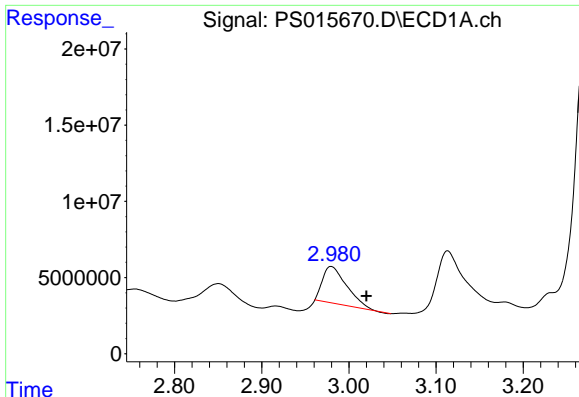
Data Path : Z:\pestpcbsrv\HPCHEM1\ECD_S\Data\PS061521\
 Data File : PS015670.D
 Signal(s) : Signal #1: ECD1A.ch Signal #2: ECD2B.ch
 Acq On : 16 Jun 2021 21:19
 Operator : DD\AJ
 Sample : M2625-11
 Misc :
 ALS Vial : 24 Sample Multiplier: 1

Instrument :
 ECD_S
 ClientSampled :
 18-B12(178-182)

Integration File signal 1: autoint1.e
 Integration File signal 2: autoint2.e
 Quant Time: Jun 17 01:52:16 2021
 Quant Method : Z:\pestpcbsrv\HPCHEM1\ECD_S\Method\PS061521.M
 Quant Title : 8080.M
 QLast Update : Tue Jun 15 18:15:49 2021
 Response via : Initial Calibration
 Integrator: ChemStation

Volume Inj. : 2 µl
 Signal #1 Phase : Rtx-CLPesticides Signal #2 Phase: Rtx-CLPesticides2
 Signal #1 Info : 30M x 0.32mm x0.5 Signal #2 Info : 30M x 0.32mm x 0.25µm

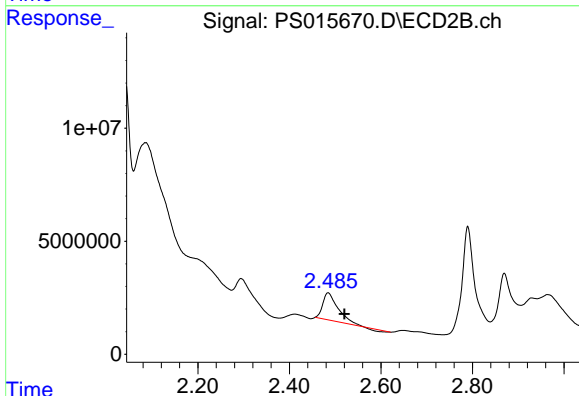




#1 Dalapon

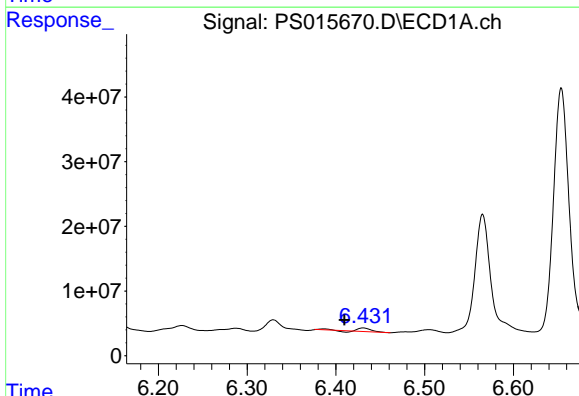
R.T.: 2.980 min
Delta R.T.: -0.040 min
Response: 46177119
Conc: 22.88 ng/ml

Instrument :
ECD_S
ClientSampleId :
18-B12(178-182)



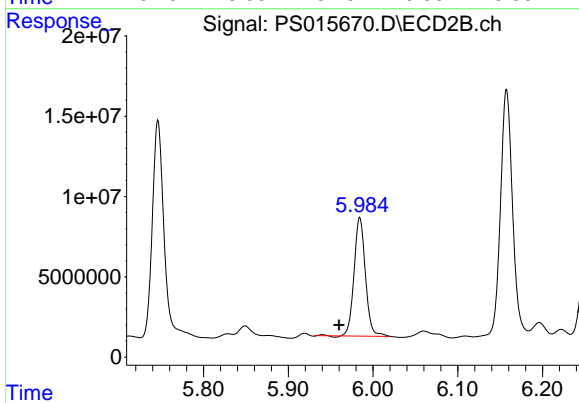
#1 Dalapon

R.T.: 2.485 min
Delta R.T.: -0.036 min
Response: 26542571
Conc: 40.87 ng/ml



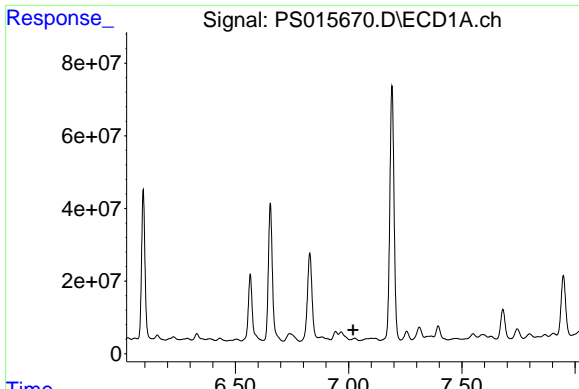
#2 3,5-DICHLOROBENZOIC ACID

R.T.: 6.431 min
Delta R.T.: 0.021 min
Response: 4875750
Conc: 2.17 ng/ml



#2 3,5-DICHLOROBENZOIC ACID

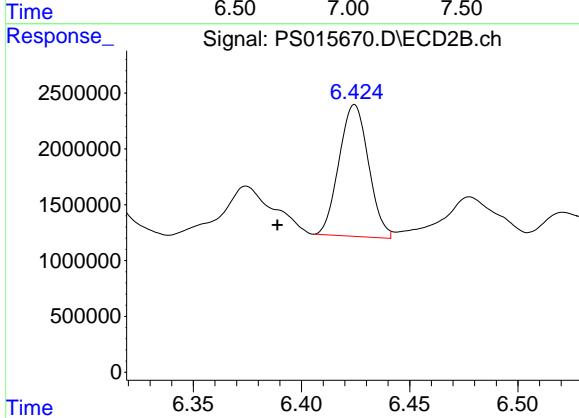
R.T.: 5.985 min
Delta R.T.: 0.025 min
Response: 68572041
Conc: 90.92 ng/ml



#3 4-Nitrophenol

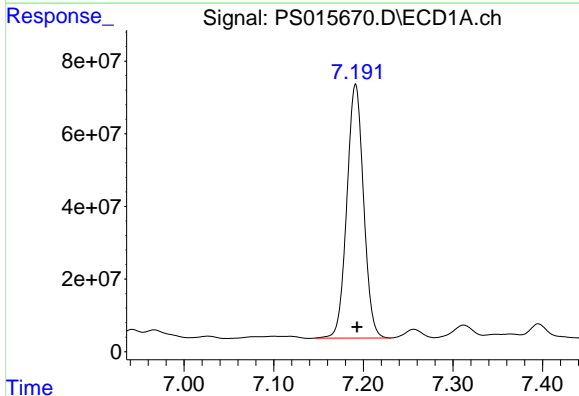
R.T.: 0.000 min
 Exp R.T.: 7.019 min
 Response: 0
 Conc: N.D.

Instrument :
 ECD_S
 ClientSampleId :
 18-B12(178-182)



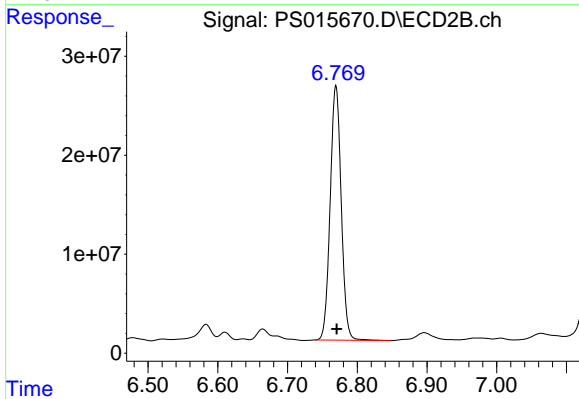
#3 4-Nitrophenol

R.T.: 6.425 min
 Delta R.T.: 0.036 min
 Response: 11133032
 Conc: 36.39 ng/ml



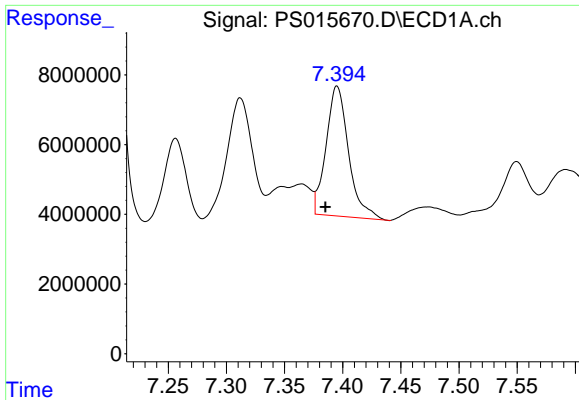
#4 2,4-DCAA

R.T.: 7.191 min
 Delta R.T.: -0.002 min
 Response: 904468949
 Conc: 544.39 ng/ml



#4 2,4-DCAA

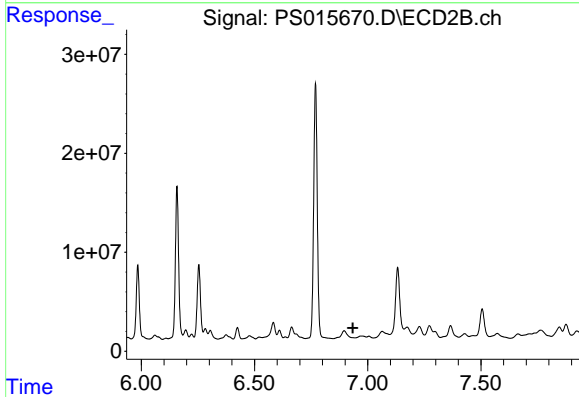
R.T.: 6.769 min
 Delta R.T.: -0.001 min
 Response: 283123525
 Conc: 561.92 ng/ml



#5 DICAMBA

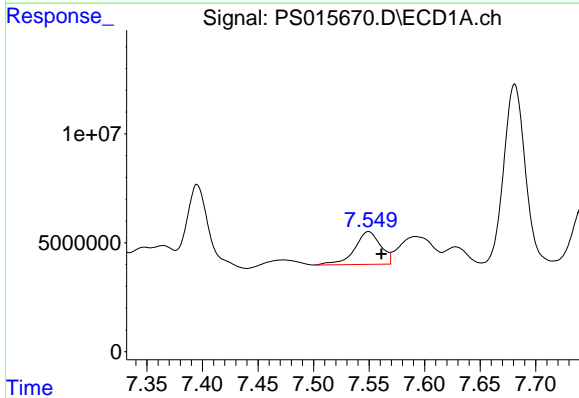
R.T.: 7.395 min
 Delta R.T.: 0.010 min
 Response: 50173866
 Conc: 7.80 ng/ml

Instrument :
 ECD_S
 ClientSampled :
 18-B12(178-182)



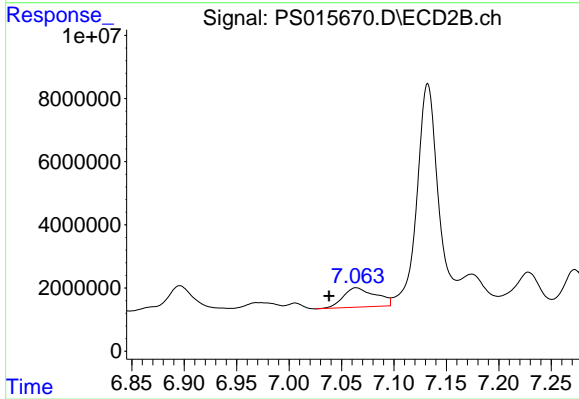
#5 DICAMBA

R.T.: 0.000 min
 Exp R.T. : 6.935 min
 Response: 0
 Conc: N.D.



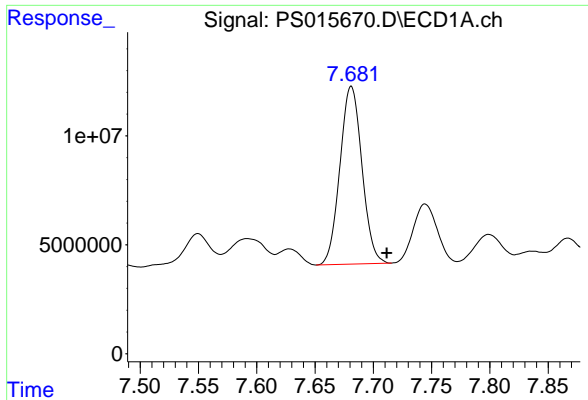
#6 MCPP

R.T.: 7.550 min
 Delta R.T.: -0.012 min
 Response: 24443580
 Conc: 4.50 ug/ml



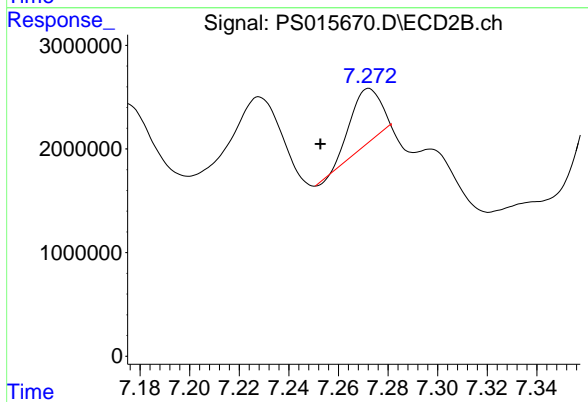
#6 MCPP

R.T.: 7.064 min
 Delta R.T.: 0.026 min
 Response: 13198788
 Conc: 7.92 ug/ml

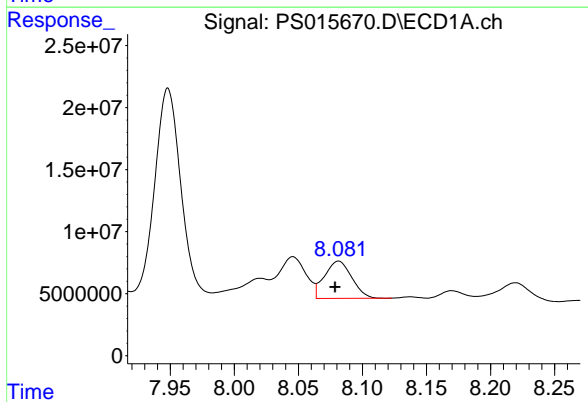


#7 MCPA
 R.T.: 7.681 min
 Delta R.T.: -0.030 min
 Response: 107250437
 Conc: 13.70 ug/ml

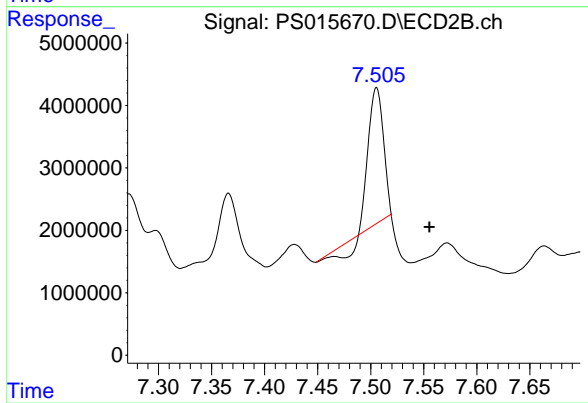
Instrument :
 ECD_S
 ClientSampleId :
 18-B12(178-182)



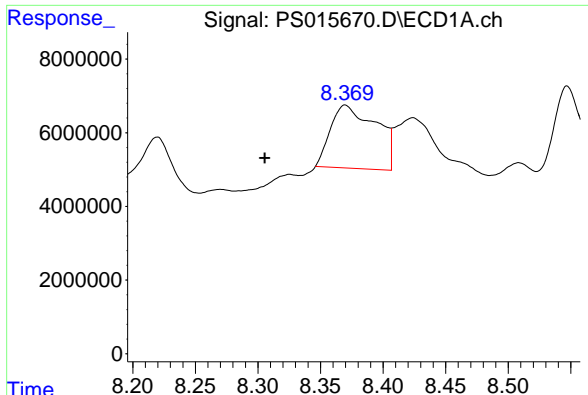
#7 MCPA
 R.T.: 7.273 min
 Delta R.T.: 0.020 min
 Response: 4526921
 Conc: 1.76 ug/ml



#8 DICHLORPROP
 R.T.: 8.081 min
 Delta R.T.: 0.003 min
 Response: 43346169
 Conc: 27.38 ng/ml

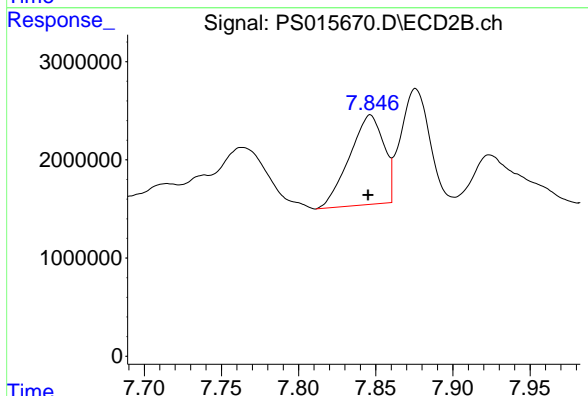


#8 DICHLORPROP
 R.T.: 7.505 min
 Delta R.T.: -0.050 min
 Response: 19040091
 Conc: 36.78 ng/ml

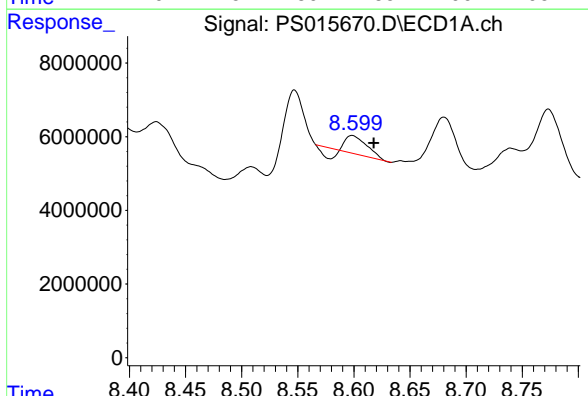


#9 2,4-D
 R.T.: 8.370 min
 Delta R.T.: 0.065 min
 Response: 43517629
 Conc: 24.83 ng/ml

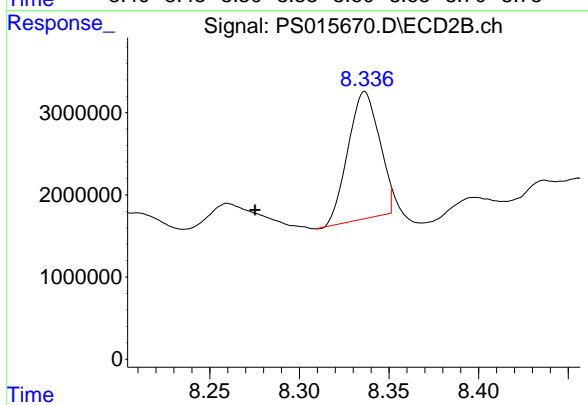
Instrument :
 ECD_S
 ClientSampleId :
 18-B12(178-182)



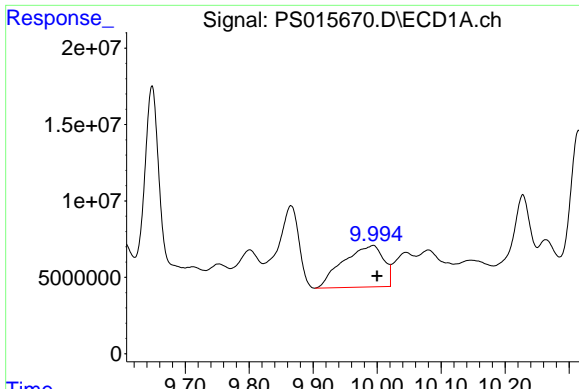
#9 2,4-D
 R.T.: 7.846 min
 Delta R.T.: 0.001 min
 Response: 14082784
 Conc: 22.70 ng/ml



#10 Pentachlorophenol
 R.T.: 8.599 min
 Delta R.T.: -0.019 min
 Response: 4340375
 Conc: N.D.

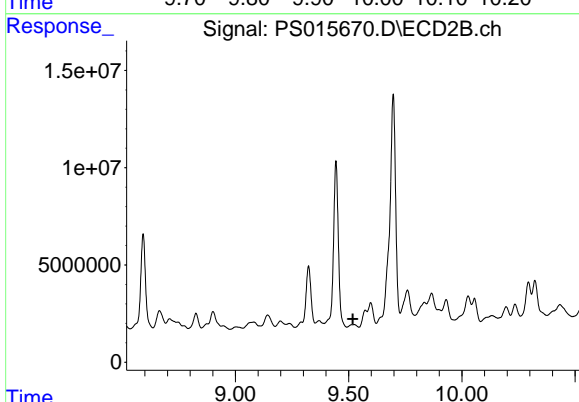


#10 Pentachlorophenol
 R.T.: 8.336 min
 Delta R.T.: 0.061 min
 Response: 18856024
 Conc: 2.68 ng/ml

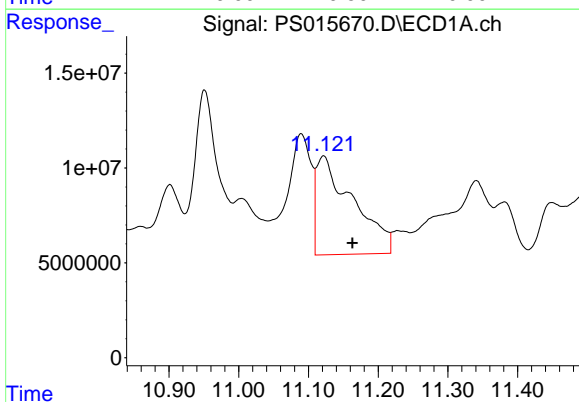


#13 2,4-DB
 R.T.: 9.993 min
 Delta R.T.: -0.007 min
 Response: 119270725
 Conc: 58.31 ng/ml

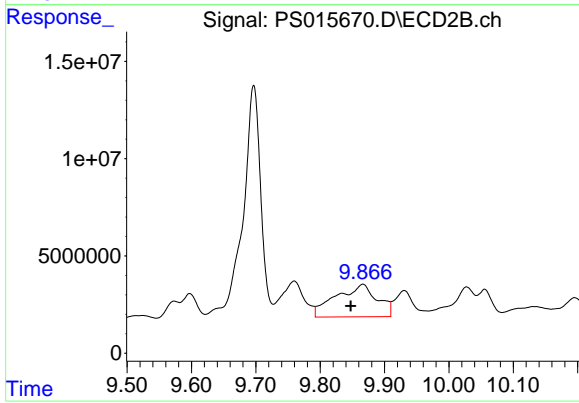
Instrument :
 ECD_S
ClientSampled :
 18-B12(178-182)



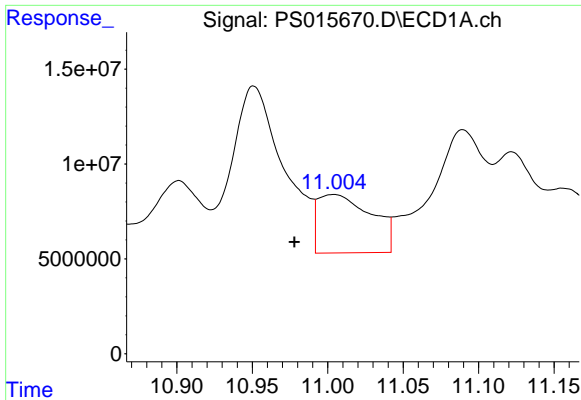
#13 2,4-DB
 R.T.: 0.000 min
 Exp R.T. : 9.519 min
 Response: 0
 Conc: N.D.



#14 DINOSEB
 R.T.: 11.122 min
 Delta R.T.: -0.042 min
 Response: 189960947
 Conc: 29.33 ng/ml

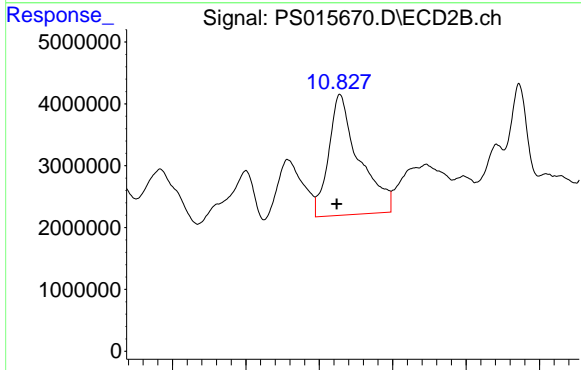


#14 DINOSEB
 R.T.: 9.866 min
 Delta R.T.: 0.019 min
 Response: 74146837
 Conc: 36.81 ng/ml

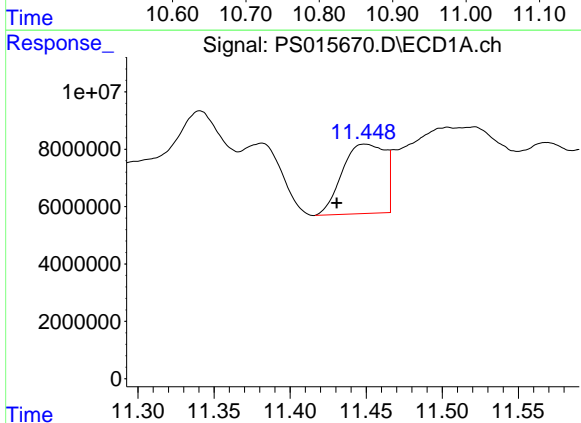


#15 Picloram
 R.T.: 11.004 min
 Delta R.T.: 0.026 min
 Response: 75842421
 Conc: 5.55 ng/ml

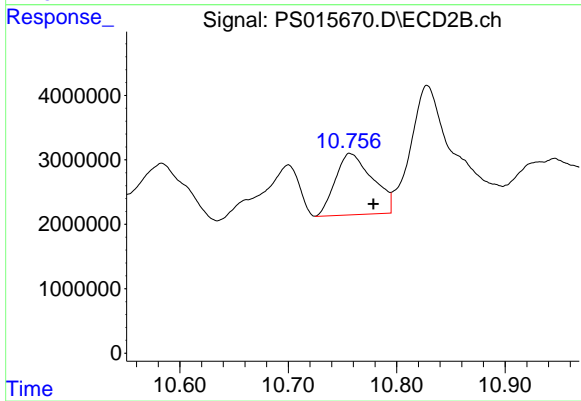
Instrument :
 ECD_S
 ClientSampleId :
 18-B12(178-182)



#15 Picloram
 R.T.: 10.828 min
 Delta R.T.: 0.004 min
 Response: 56229620
 Conc: 13.37 ng/ml



#16 DCPA
 R.T.: 11.449 min
 Delta R.T.: 0.019 min
 Response: 47595956
 Conc: 3.60 ng/ml



#16 DCPA
 R.T.: 10.757 min
 Delta R.T.: -0.021 min
 Response: 22796798
 Conc: 5.42 ng/ml