

Data Path : Z:\pestpcbsrv\HPCHEM1\ECD_S\Data\PS061521\
 Data File : PS015641.D
 Signal(s) : Signal #1: ECD1A.ch Signal #2: ECD2B.ch
 Acq On : 16 Jun 2021 08:25
 Operator : DD\AJ
 Sample : M2651-06
 Misc :
 ALS Vial : 26 Sample Multiplier: 1

Instrument :
 ECD_S
ClientSampleId :
 CON-ED-EXCAVATION

Integration File signal 1: autoint1.e
 Integration File signal 2: autoint2.e
 Quant Time: Jun 16 09:15:19 2021
 Quant Method : Z:\pestpcbsrv\HPCHEM1\ECD_S\Method\PS061521.M
 Quant Title : 8080.M
 QLast Update : Tue Jun 15 18:15:49 2021
 Response via : Initial Calibration
 Integrator: ChemStation

Volume Inj. : 2 µl
 Signal #1 Phase : Rtx-CLPesticides Signal #2 Phase: Rtx-CLPesticides2
 Signal #1 Info : 30M x 0.32mm x0.5 Signal #2 Info : 30M x 0.32mm x 0.25µm

Compound	RT#1	RT#2	Resp#1	Resp#2	ng/ml	ng/ml

System Monitoring Compounds						
4) S 2,4-DCAA	7.189	6.769	1126.6E6	250.0E6	678.095	496.152 #

Target Compounds

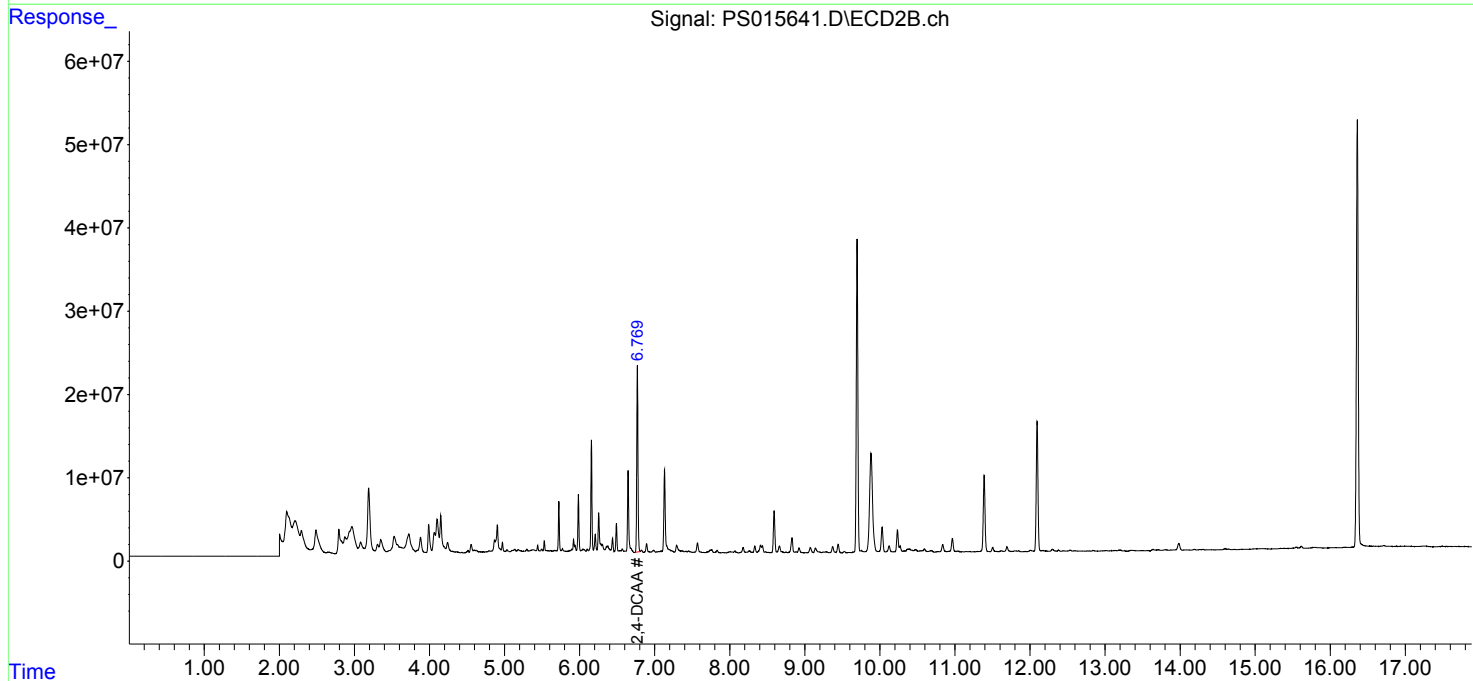
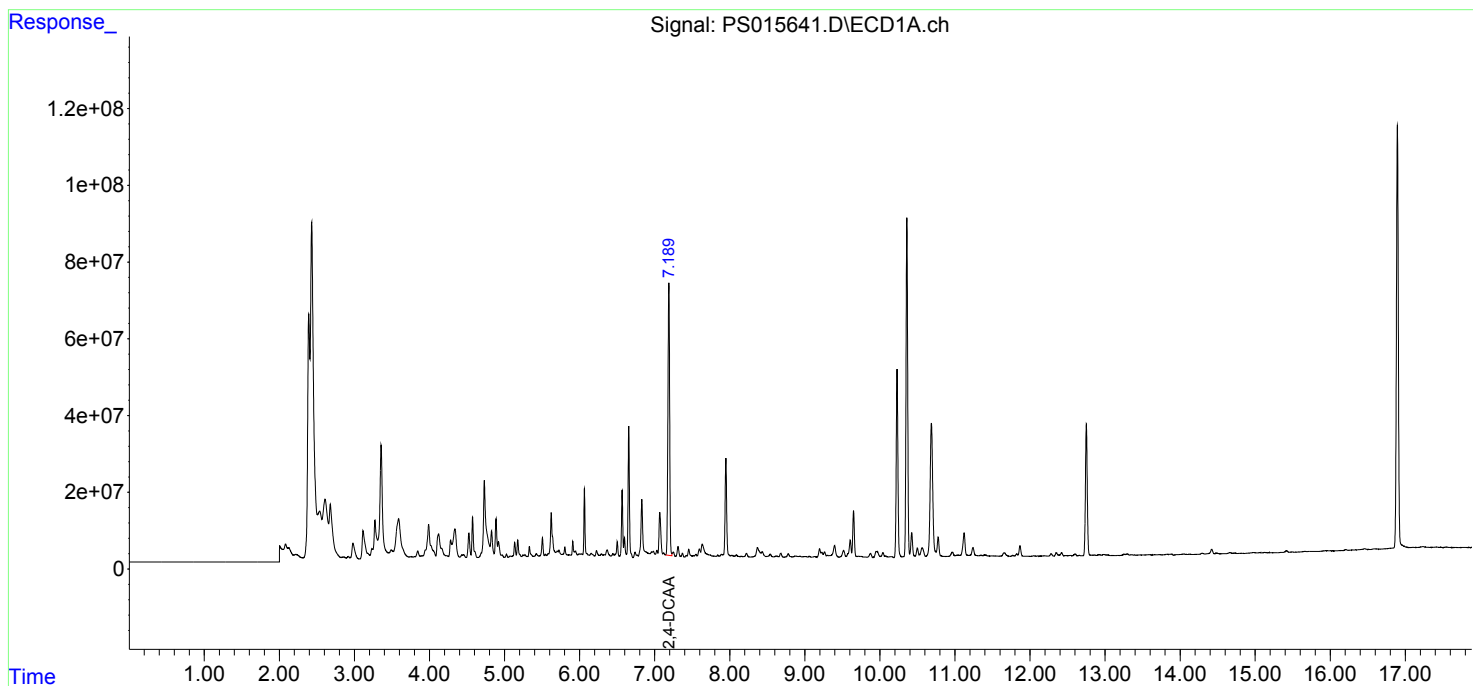
(f)=RT Delta > 1/2 Window (#)=Amounts differ by > 25% (m)=manual int.

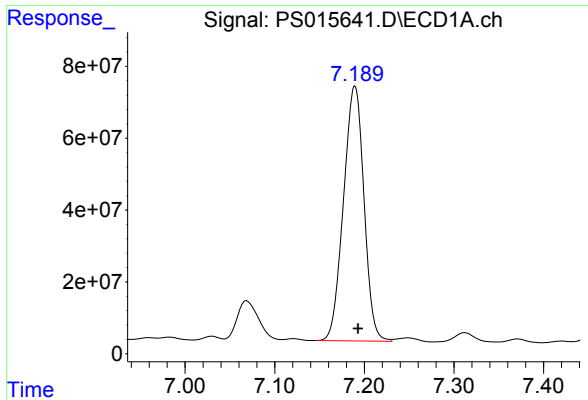
Data Path : Z:\pestpcbsrv\HPCHEM1\ECD_S\Data\PS061521\
 Data File : PS015641.D
 Signal(s) : Signal #1: ECD1A.ch Signal #2: ECD2B.ch
 Acq On : 16 Jun 2021 08:25
 Operator : DD\AJ
 Sample : M2651-06
 Misc :
 ALS Vial : 26 Sample Multiplier: 1

Instrument :
 ECD_S
 ClientSampleId :
 CON-ED-EXCAVATION

Integration File signal 1: autoint1.e
 Integration File signal 2: autoint2.e
 Quant Time: Jun 16 09:15:19 2021
 Quant Method : Z:\pestpcbsrv\HPCHEM1\ECD_S\Method\PS061521.M
 Quant Title : 8080.M
 QLast Update : Tue Jun 15 18:15:49 2021
 Response via : Initial Calibration
 Integrator: ChemStation

Volume Inj. : 2 µl
 Signal #1 Phase : Rtx-CLPesticides Signal #2 Phase: Rtx-CLPesticides2
 Signal #1 Info : 30M x 0.32mm x 0.5 Signal #2 Info : 30M x 0.32mm x 0.25µm

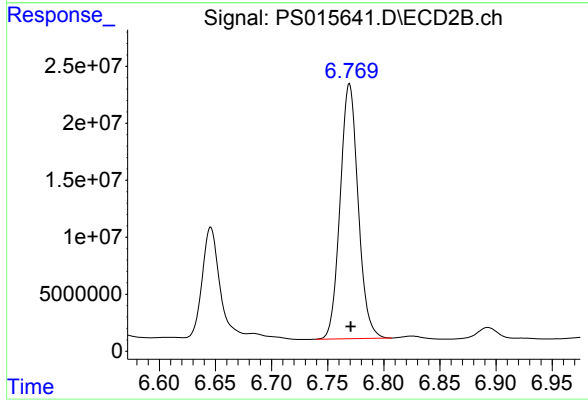




#4 2,4-DCAA

R.T.: 7.189 min
Delta R.T.: -0.004 min
Response: 1126618894
Conc: 678.10 ng/ml

Instrument :
ECD_S
ClientSampleId :
CON-ED-EXCAVATION



#4 2,4-DCAA

R.T.: 6.769 min
Delta R.T.: -0.001 min
Response: 249987259
Conc: 496.15 ng/ml