

Data Path : Z:\pestpcbsrv\HPCHEM1\ECD\_S\Data\PS061523\  
 Data File : PS023307.D  
 Signal(s) : Signal #1: ECD1A.ch Signal #2: ECD2B.ch  
 Acq On : 15 Jun 2023 12:44  
 Operator : AR\AJ  
 Sample : 03157-05MSD  
 Misc :  
 ALS Vial : 11 Sample Multiplier: 1

**Instrument :**  
 ECD\_S  
**ClientSampleId :**  
 SU-622-COMP-01MSD

**Manual Integrations**  
**APPROVED**

Reviewed By :Abdul Mirza 06/16/2023  
 Supervised By :Ankita Jodhani 06/16/2023

Integration File signal 1: autoint1.e  
 Integration File signal 2: autoint2.e  
 Quant Time: Jun 15 13:35:29 2023  
 Quant Method : Z:\pestpcbsrv\HPCHEM1\ECD\_S\Method\PS060623.M  
 Quant Title : 8080.M  
 QLast Update : Tue Jun 06 13:00:04 2023  
 Response via : Initial Calibration  
 Integrator: ChemStation

Volume Inj. : 2 µl  
 Signal #1 Phase : Rtx-CLPesticides Signal #2 Phase: Rtx-CLPesticides2  
 Signal #1 Info : 30M x 0.32mm x0.5 Signal #2 Info : 30M x 0.32mm x 0.25µm

	Compound	RT#1	RT#2	Resp#1	Resp#2	ng/ml	ng/ml
-----							
System Monitoring Compounds							
4) S	2,4-DCAA	6.481	6.854	1247.8E6	348.5E6	705.294	613.855m
Target Compounds							
1) T	Dalapon	2.550	2.579	848.3E6	454.1E6	463.904	495.434
2) T	3,5-DICHL...	5.834	6.021	1721.5E6	565.3E6	640.780	638.611
5) T	DICAMBA	6.628	7.021	4525.4E6	1514.6E6	580.641	591.012
6) T	MCPD	6.787	7.116	380.3E6	129.9E6	68.992	72.681
7) T	MCPA	6.914	7.326	476.0E6	184.9E6	60.789	68.813
8) T	DICHLORPROP	7.237	7.642	1244.6E6	389.9E6	603.128	630.334
9) T	2,4-D	7.438	7.930	1583.9E6	455.6E6	648.278	656.904
10) T	Pentachlo...	7.673	8.361	19048.7E6	6043.5E6	675.979	668.026
11) T	2,4,5-TP ...	8.208	8.720	7508.9E6	2200.6E6	649.381	659.384
12) T	2,4,5-T	8.468	9.093	7347.9E6	1993.5E6	646.814	650.273
13) T	2,4-DB	8.985	9.599	1038.0E6	236.9E6	440.939	638.933 #
14) T	DINOSEB	10.056	9.929	5120.7E6	1553.5E6	618.275m	654.647
15) T	Picloram	9.877	10.893	9798.7E6	2455.6E6	564.621	538.060
16) T	DCPA	10.325	10.856	8943.1E6	2611.4E6	641.516	650.909
-----							

(f)=RT Delta > 1/2 Window (#)=Amounts differ by > 25% (m)=manual int.

Data Path : Z:\pestpcbsrv\HPCHEM1\ECD\_S\Data\PS061523\  
 Data File : PS023307.D  
 Signal(s) : Signal #1: ECD1A.ch Signal #2: ECD2B.ch  
 Acq On : 15 Jun 2023 12:44  
 Operator : AR\AJ  
 Sample : 03157-05MSD  
 Misc :  
 ALS Vial : 11 Sample Multiplier: 1

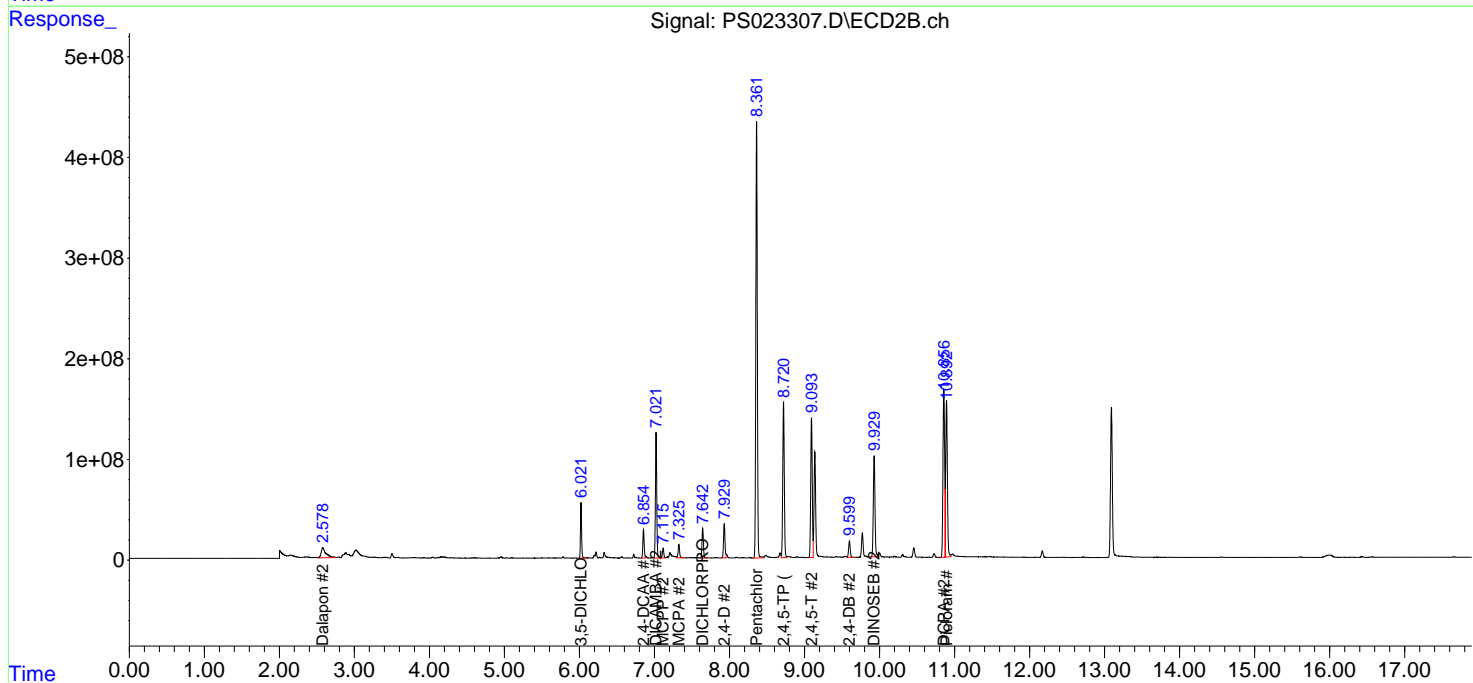
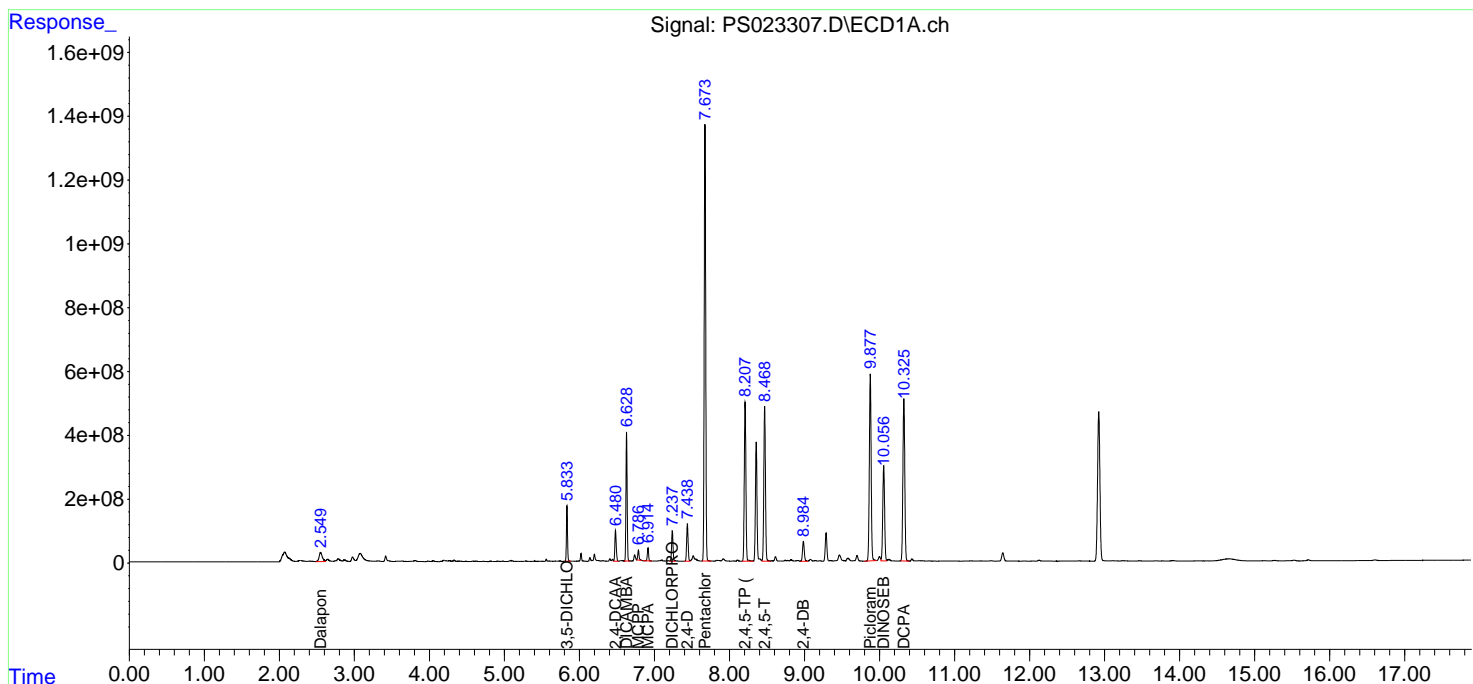
Instrument :  
 ECD\_S  
 ClientSampleId :  
 SU-622-COMP-01MSD

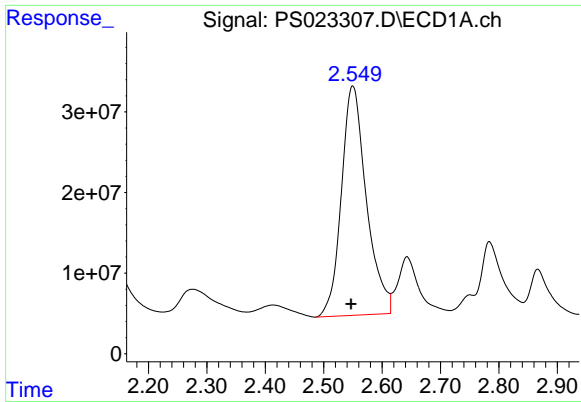
Manual Integrations  
 APPROVED

Reviewed By :Abdul Mirza 06/16/2023  
 Supervised By :Ankita Jodhani 06/16/2023

Integration File signal 1: autoint1.e  
 Integration File signal 2: autoint2.e  
 Quant Time: Jun 15 13:35:29 2023  
 Quant Method : Z:\pestpcbsrv\HPCHEM1\ECD\_S\Method\PS060623.M  
 Quant Title : 8080.M  
 QLast Update : Tue Jun 06 13:00:04 2023  
 Response via : Initial Calibration  
 Integrator: ChemStation

Volume Inj. : 2 µl  
 Signal #1 Phase : Rtx-CLPesticides Signal #2 Phase: Rtx-CLPesticides2  
 Signal #1 Info : 30M x 0.32mm x0.5 Signal #2 Info : 30M x 0.32mm x 0.25µm





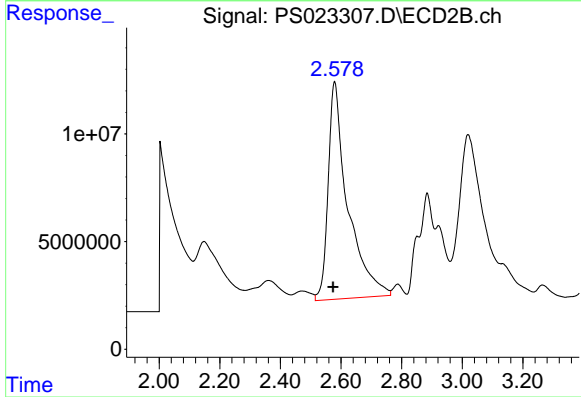
#1 Dalapon

R.T.: 2.550 min  
 Delta R.T.: 0.003 min  
 Response: 848262867  
 Conc: 463.90 ng/ml

Instrument :  
 ECD\_S  
 ClientSampleId :  
 SU-622-COMP-01MSD

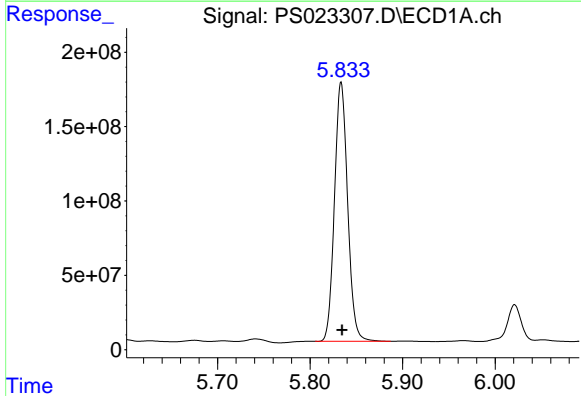
Manual Integrations  
 APPROVED

Reviewed By :Abdul Mirza 06/16/2023  
 Supervised By :Ankita Jodhani 06/16/2023



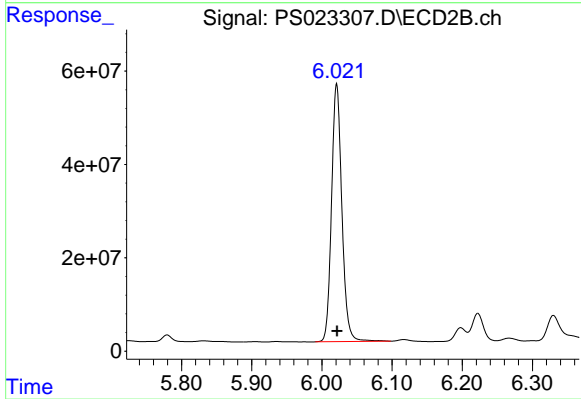
#1 Dalapon

R.T.: 2.579 min  
 Delta R.T.: 0.005 min  
 Response: 454139959  
 Conc: 495.43 ng/ml



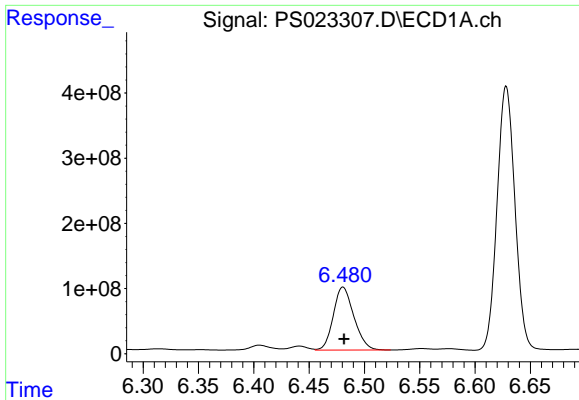
#2 3,5-DICHLOROBENZOIC ACID

R.T.: 5.834 min  
 Delta R.T.: 0.000 min  
 Response: 1721513744  
 Conc: 640.78 ng/ml



#2 3,5-DICHLOROBENZOIC ACID

R.T.: 6.021 min  
 Delta R.T.: 0.000 min  
 Response: 565288340  
 Conc: 638.61 ng/ml



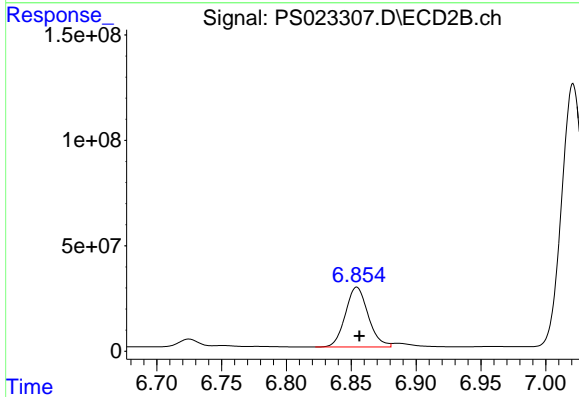
#4 2,4-DCAA

R.T.: 6.481 min  
 Delta R.T.: 0.000 min  
 Response: 1247845120  
 Conc: 705.29 ng/ml

Instrument : ECD\_S  
 ClientSampleId : SU-622-COMP-01MSD

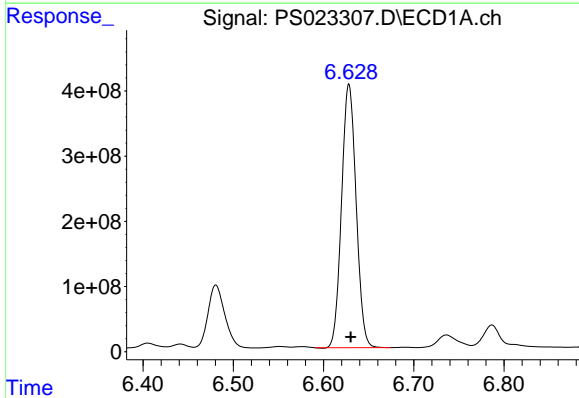
Manual Integrations  
 APPROVED

Reviewed By :Abdul Mirza 06/16/2023  
 Supervised By :Ankita Jodhani 06/16/2023



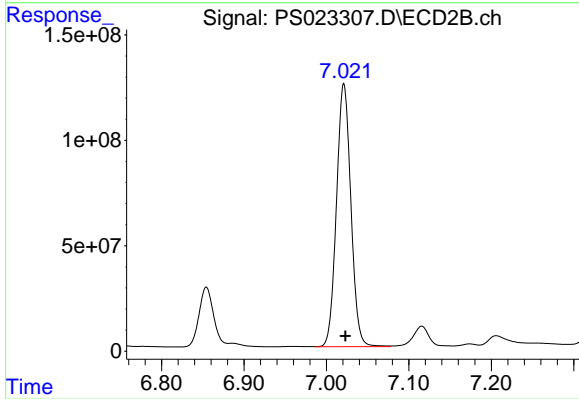
#4 2,4-DCAA

R.T.: 6.854 min  
 Delta R.T.: -0.002 min  
 Response: 348482614  
 Conc: 613.85 ng/ml m



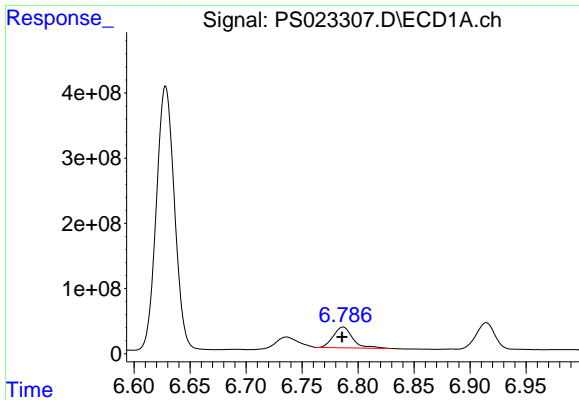
#5 DICAMBA

R.T.: 6.628 min  
 Delta R.T.: -0.002 min  
 Response: 4525362958  
 Conc: 580.64 ng/ml



#5 DICAMBA

R.T.: 7.021 min  
 Delta R.T.: -0.002 min  
 Response: 1514588252  
 Conc: 591.01 ng/ml



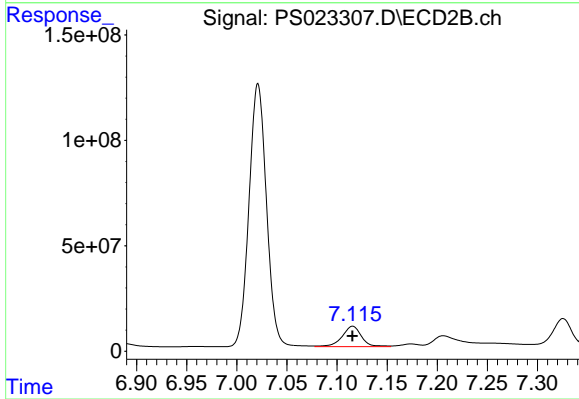
#6 MCPP

R.T.: 6.787 min  
 Delta R.T.: 0.000 min  
 Response: 380253348  
 Conc: 68.99 ug/ml

Instrument :  
 ECD\_S  
 ClientSampleId :  
 SU-622-COMP-01MSD

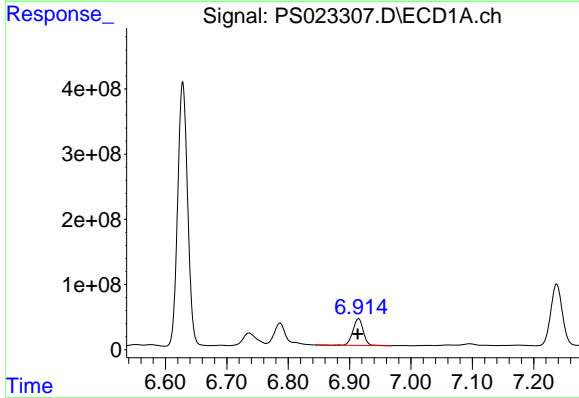
Manual Integrations  
 APPROVED

Reviewed By :Abdul Mirza 06/16/2023  
 Supervised By :Ankita Jodhani 06/16/2023



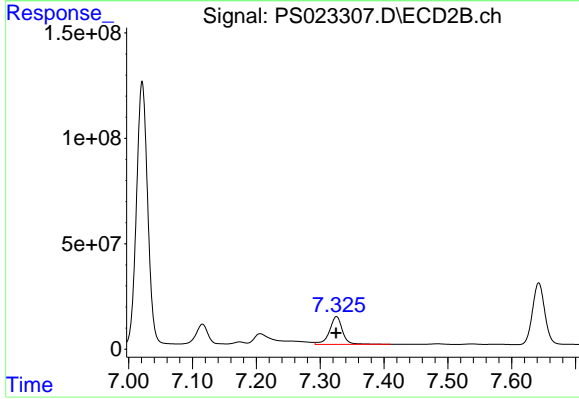
#6 MCPP

R.T.: 7.116 min  
 Delta R.T.: 0.000 min  
 Response: 129930475  
 Conc: 72.68 ug/ml



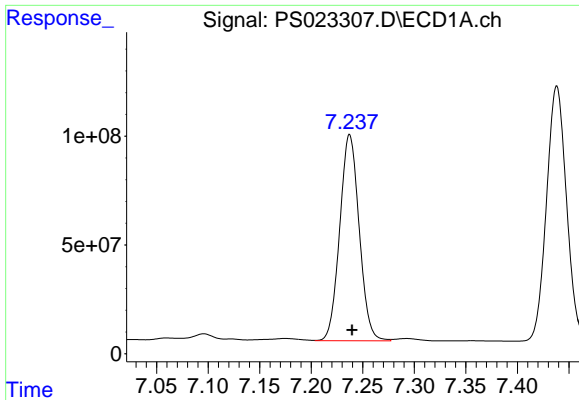
#7 MCPA

R.T.: 6.914 min  
 Delta R.T.: 0.001 min  
 Response: 475959897  
 Conc: 60.79 ug/ml



#7 MCPA

R.T.: 7.326 min  
 Delta R.T.: 0.000 min  
 Response: 184942456  
 Conc: 68.81 ug/ml



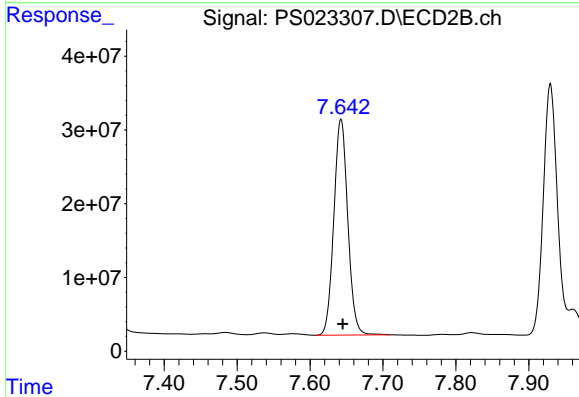
#8 DICHLORPROP

R.T.: 7.237 min  
 Delta R.T.: -0.002 min  
 Response: 1244569415  
 Conc: 603.13 ng/ml

Instrument :  
 ECD\_S  
 ClientSampleId :  
 SU-622-COMP-01MSD

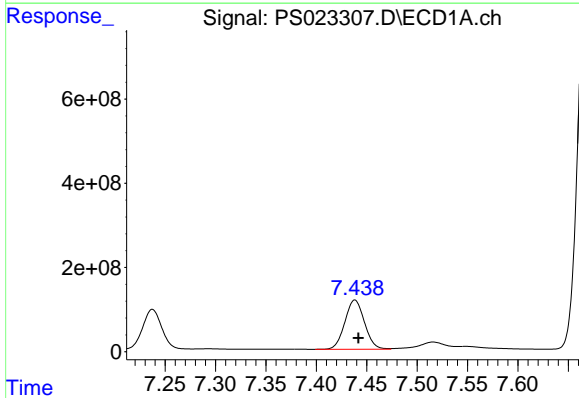
Manual Integrations  
 APPROVED

Reviewed By :Abdul Mirza 06/16/2023  
 Supervised By :Ankita Jodhani 06/16/2023



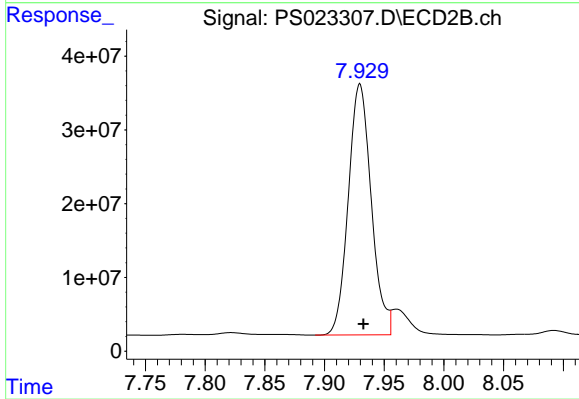
#8 DICHLORPROP

R.T.: 7.642 min  
 Delta R.T.: -0.002 min  
 Response: 389915924  
 Conc: 630.33 ng/ml



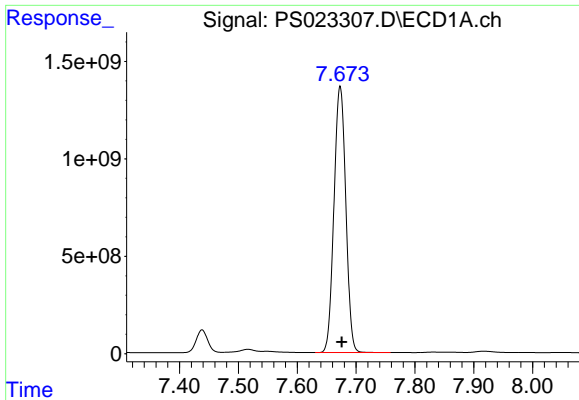
#9 2,4-D

R.T.: 7.438 min  
 Delta R.T.: -0.003 min  
 Response: 1583933424  
 Conc: 648.28 ng/ml



#9 2,4-D

R.T.: 7.930 min  
 Delta R.T.: -0.003 min  
 Response: 455575043  
 Conc: 656.90 ng/ml



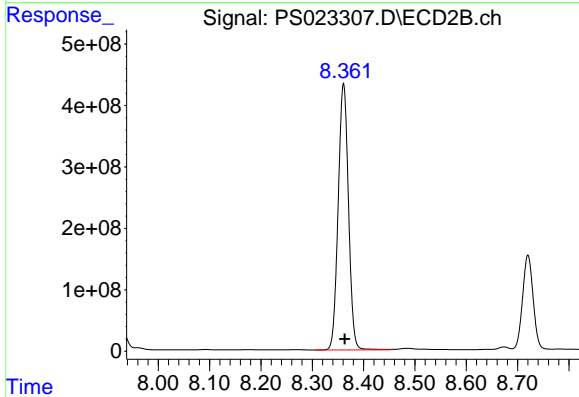
#10 Pentachlorophenol

R.T.: 7.673 min  
 Delta R.T.: -0.003 min  
 Response: 19048650362  
 Conc: 675.98 ng/ml

Instrument :  
 ECD\_S  
 ClientSampleId :  
 SU-622-COMP-01MSD

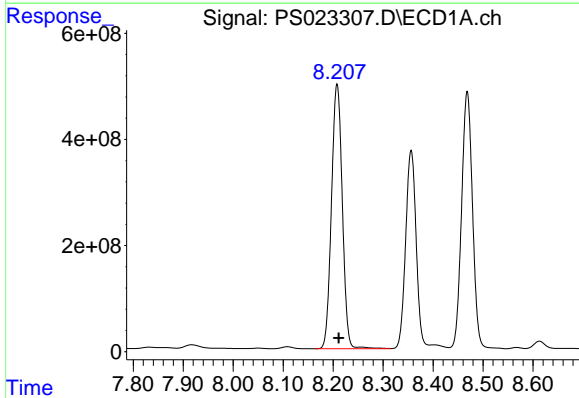
Manual Integrations  
 APPROVED

Reviewed By :Abdul Mirza 06/16/2023  
 Supervised By :Ankita Jodhani 06/16/2023



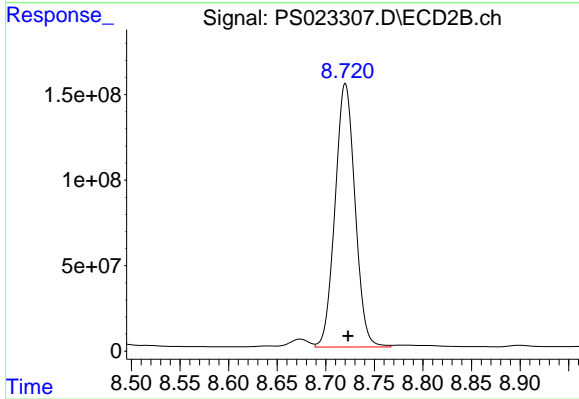
#10 Pentachlorophenol

R.T.: 8.361 min  
 Delta R.T.: -0.002 min  
 Response: 6043533591  
 Conc: 668.03 ng/ml



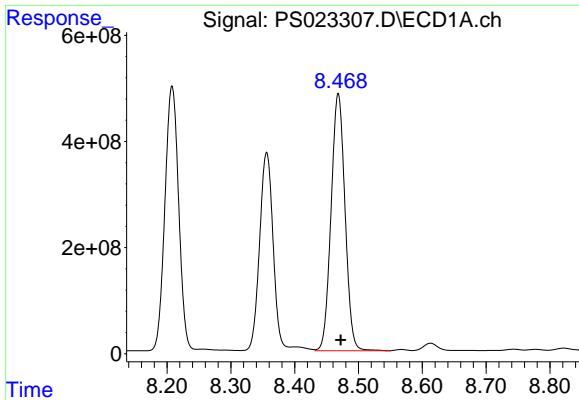
#11 2,4,5-TP (SILVEX)

R.T.: 8.208 min  
 Delta R.T.: -0.003 min  
 Response: 7508900944  
 Conc: 649.38 ng/ml



#11 2,4,5-TP (SILVEX)

R.T.: 8.720 min  
 Delta R.T.: -0.003 min  
 Response: 2200577429  
 Conc: 659.38 ng/ml



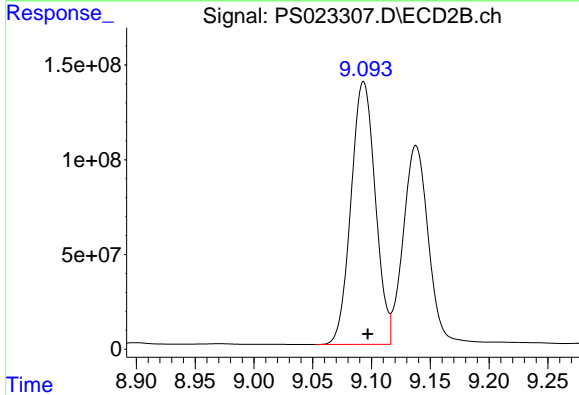
#12 2,4,5-T

R.T.: 8.468 min  
 Delta R.T.: -0.004 min  
 Response: 7347940585  
 Conc: 646.81 ng/ml

Instrument :  
 ECD\_S  
 ClientSampleId :  
 SU-622-COMP-01MSD

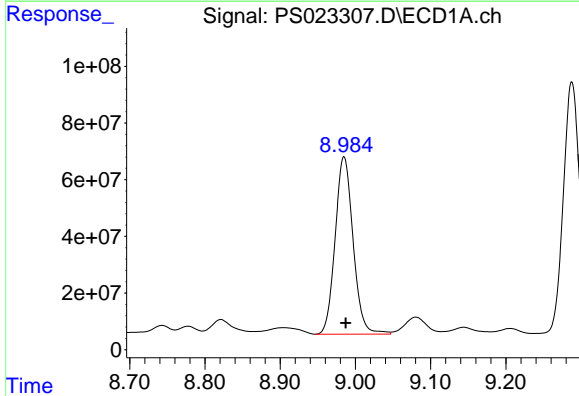
Manual Integrations  
 APPROVED

Reviewed By :Abdul Mirza 06/16/2023  
 Supervised By :Ankita Jodhani 06/16/2023



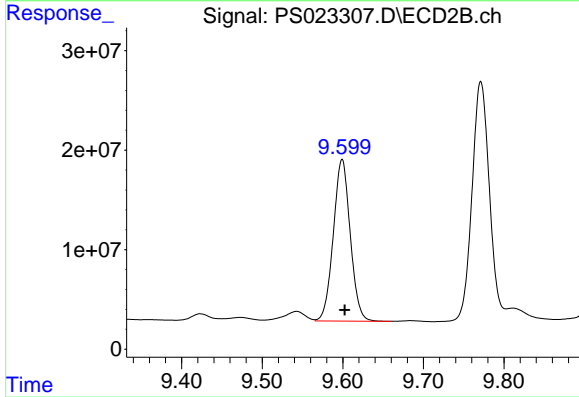
#12 2,4,5-T

R.T.: 9.093 min  
 Delta R.T.: -0.003 min  
 Response: 1993451735  
 Conc: 650.27 ng/ml



#13 2,4-DB

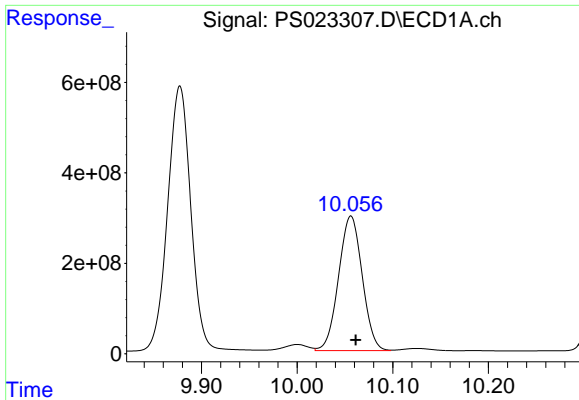
R.T.: 8.985 min  
 Delta R.T.: -0.002 min  
 Response: 1038014567  
 Conc: 440.94 ng/ml



#13 2,4-DB

R.T.: 9.599 min  
 Delta R.T.: -0.003 min  
 Response: 236917533  
 Conc: 638.93 ng/ml





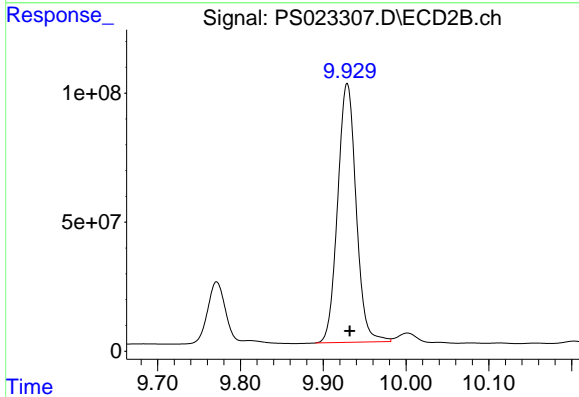
#14 DINOSEB

R.T.: 10.056 min  
 Delta R.T.: -0.006 min  
 Response: 5120683309  
 Conc: 618.28 ng/ml

Instrument :  
 ECD\_S  
 ClientSampleId :  
 SU-622-COMP-01MSD

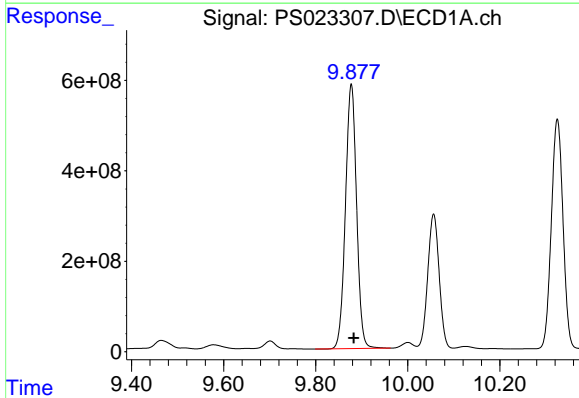
Manual Integrations  
 APPROVED

Reviewed By :Abdul Mirza 06/16/2023  
 Supervised By :Ankita Jodhani 06/16/2023



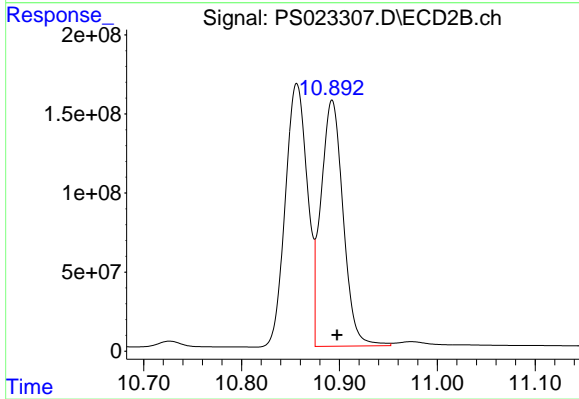
#14 DINOSEB

R.T.: 9.929 min  
 Delta R.T.: -0.003 min  
 Response: 1553509868  
 Conc: 654.65 ng/ml



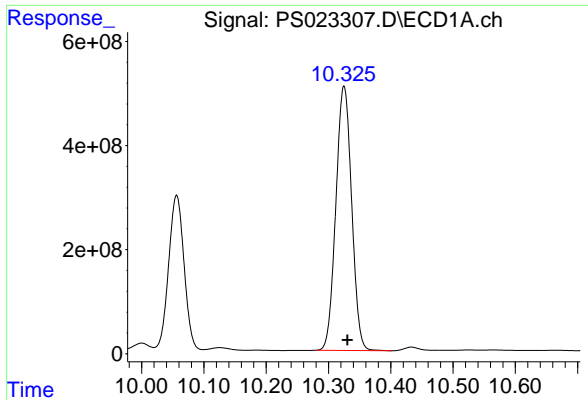
#15 Picloram

R.T.: 9.877 min  
 Delta R.T.: -0.005 min  
 Response: 9798747753  
 Conc: 564.62 ng/ml



#15 Picloram

R.T.: 10.893 min  
 Delta R.T.: -0.005 min  
 Response: 2455609178  
 Conc: 538.06 ng/ml



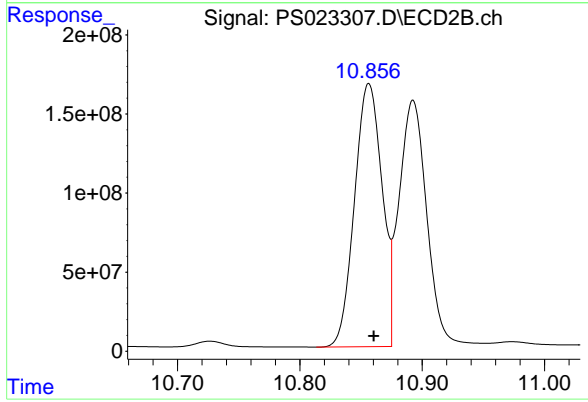
#16 DCPA

R.T.: 10.325 min  
 Delta R.T.: -0.005 min  
 Response: 8943079570  
 Conc: 641.52 ng/ml

Instrument :  
 ECD\_S  
 ClientSampleId :  
 SU-622-COMP-01MSD

Manual Integrations  
 APPROVED

Reviewed By :Abdul Mirza 06/16/2023  
 Supervised By :Ankita Jodhani 06/16/2023



#16 DCPA

R.T.: 10.856 min  
 Delta R.T.: -0.004 min  
 Response: 2611350848  
 Conc: 650.91 ng/ml