

Data Path : Z:\pestpcbsrv\HPCHEM1\ECD\_S\Data\PS061620\  
 Data File : PS010807.D  
 Signal(s) : Signal #1: ECD1A.ch Signal #2: ECD2B.ch  
 Acq On : 16 Jun 2020 18:29  
 Operator : DD\AJ  
 Sample : L2808-05  
 Misc :  
 ALS Vial : 7 Sample Multiplier: 1

Instrument :  
 ECD\_S  
 ClientSampleId :  
 HR-06-061120

Integration File signal 1: autoint1.e  
 Integration File signal 2: autoint2.e  
 Quant Time: Jun 16 18:40:31 2020  
 Quant Method : Z:\pestpcbsrv\HPCHEM1\ECD\_S\Method\PS052920.M  
 Quant Title : 8080.M  
 QLast Update : Fri May 29 15:43:50 2020  
 Response via : Initial Calibration  
 Integrator: ChemStation

Volume Inj. : 2 µl  
 Signal #1 Phase : Rtx-CLPesticides Signal #2 Phase: Rtx-CLPesticides2  
 Signal #1 Info : 30M x 0.32mm x0.5 Signal #2 Info : 30M x 0.32mm x 0.25µm

Compound	RT#1	RT#2	Resp#1	Resp#2	ng/ml	ng/ml
-----						
System Monitoring Compounds						
4) S 2,4-DCAA	7.228	6.920	289.1E6	209.7E6	365.571	384.441

Target Compounds

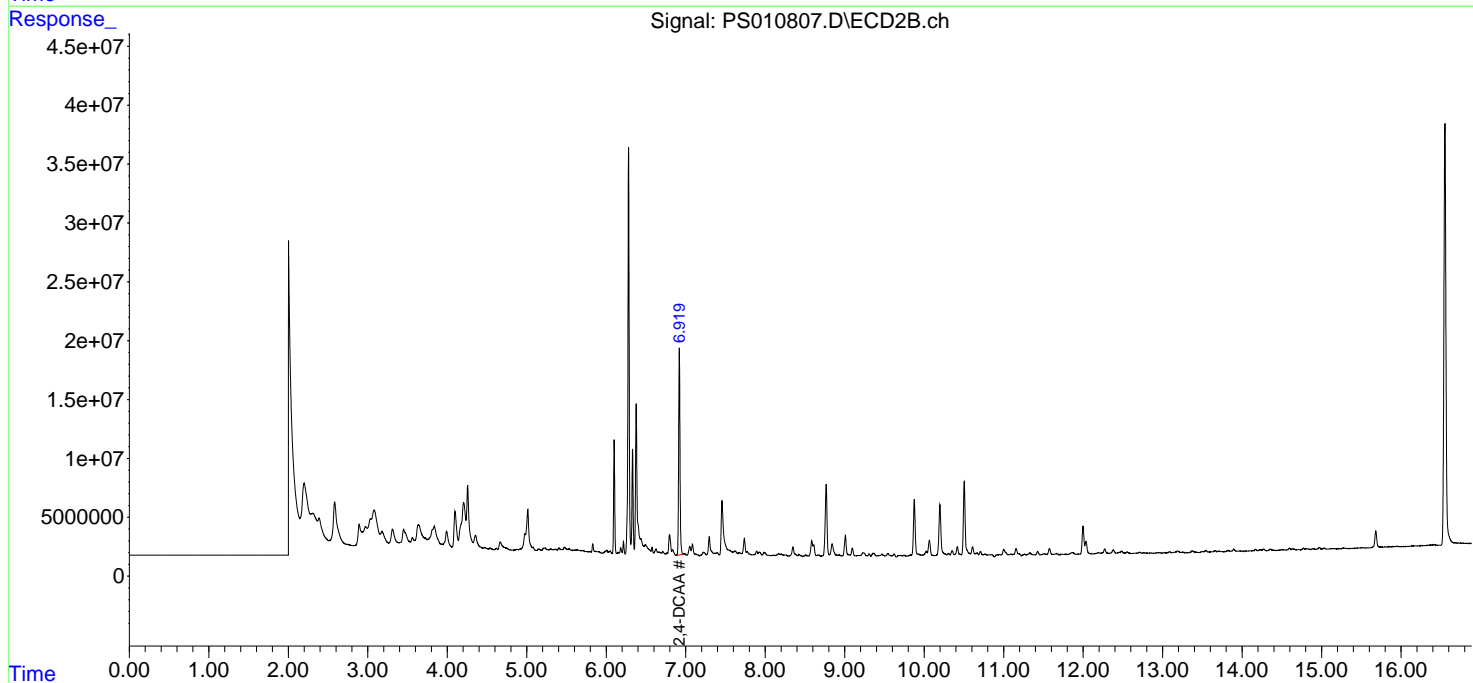
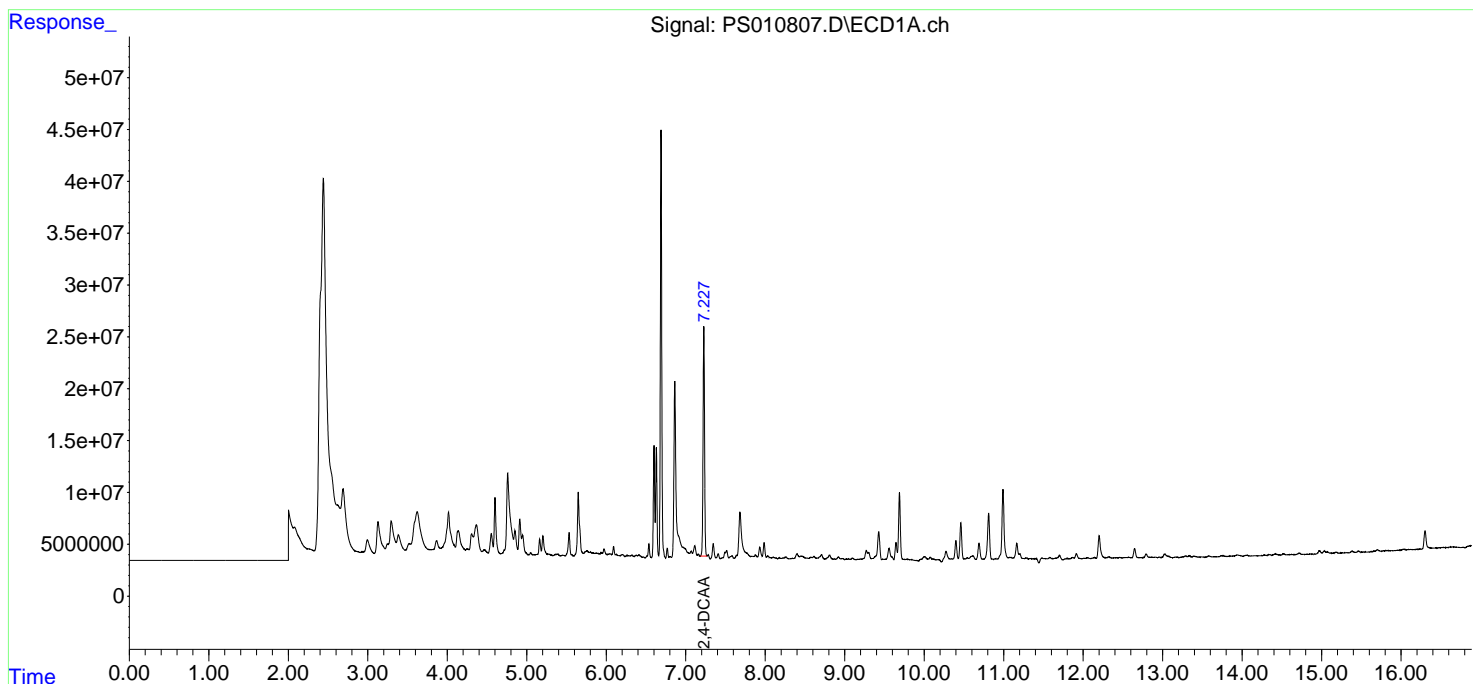
(f)=RT Delta > 1/2 Window (#)=Amounts differ by > 25% (m)=manual int.

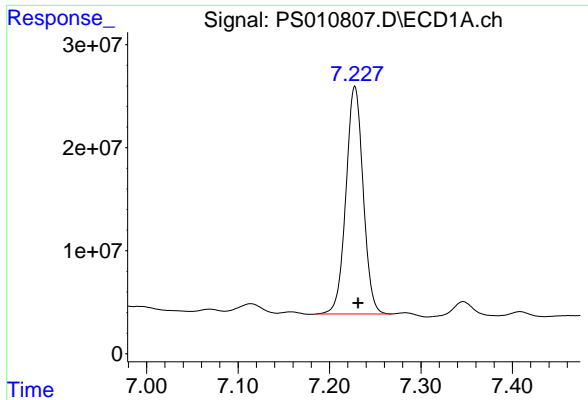
Data Path : Z:\pestpcbsrv\HPCHEM1\ECD\_S\Data\PS061620\  
 Data File : PS010807.D  
 Signal(s) : Signal #1: ECD1A.ch Signal #2: ECD2B.ch  
 Acq On : 16 Jun 2020 18:29  
 Operator : DD\AJ  
 Sample : L2808-05  
 Misc :  
 ALS Vial : 7 Sample Multiplier: 1

Instrument :  
 ECD\_S  
 ClientSampleId :  
 HR-06-061120

Integration File signal 1: autoint1.e  
 Integration File signal 2: autoint2.e  
 Quant Time: Jun 16 18:40:31 2020  
 Quant Method : Z:\pestpcbsrv\HPCHEM1\ECD\_S\Method\PS052920.M  
 Quant Title : 8080.M  
 QLast Update : Fri May 29 15:43:50 2020  
 Response via : Initial Calibration  
 Integrator: ChemStation

Volume Inj. : 2 µl  
 Signal #1 Phase : Rtx-CLPesticides Signal #2 Phase: Rtx-CLPesticides2  
 Signal #1 Info : 30M x 0.32mm x0.5 Signal #2 Info : 30M x 0.32mm x 0.25µm

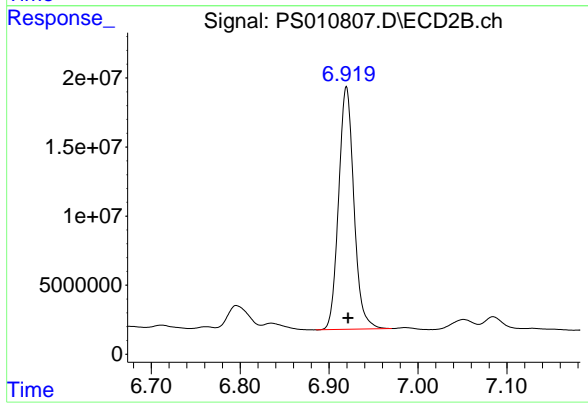




#4 2,4-DCAA

R.T.: 7.228 min  
Delta R.T.: -0.003 min  
Response: 289115938  
Conc: 365.57 ng/ml

Instrument :  
ECD\_S  
ClientSampleId :  
HR-06-061120



#4 2,4-DCAA

R.T.: 6.920 min  
Delta R.T.: -0.002 min  
Response: 209680310  
Conc: 384.44 ng/ml