

Data Path : Z:\pestpcbsrv\HPCHEM1\ECD_S\Data\PS061625\
 Data File : PS030699.D
 Signal(s) : Signal #1: ECD1A.ch Signal #2: ECD2B.ch
 Acq On : 16 Jun 2025 18:13
 Operator : AR\AJ
 Sample : PB168495BL
 Misc :
 ALS Vial : 12 Sample Multiplier: 1

Instrument :
 ECD_S
 ClientSampleId :

Integration File signal 1: autoint1.e
 Integration File signal 2: autoint2.e
 Quant Time: Jun 17 04:14:52 2025
 Quant Method : Z:\pestpcbsrv\HPCHEM1\ECD_S\Method\PS061625.M
 Quant Title : 8080.M
 QLast Update : Mon Jun 16 11:52:28 2025
 Response via : Initial Calibration
 Integrator: ChemStation

Volume Inj. : 1 µl
 Signal #1 Phase : ZB-MR2 Signal #2 Phase: ZB-MR2
 Signal #1 Info : 30M x 0.32mm x0.5 Signal #2 Info : 30M x 0.32mm x 0.25µm

	Compound	RT#1	RT#2	Resp#1	Resp#2	ng/ml	ng/ml

System Monitoring Compounds							
4) S	2,4-DCAA	7.351	7.767	1607.6E6	507.9E6	427.473	470.370
Target Compounds							
1) T	Dalapon	2.666f	2.680f	1442.1E6	759.3E6	230.559	269.816
2) T	3,5-DICHL...	6.508	6.714	47351558	18574767	8.709	11.482 #
3) T	4-Nitroph...	7.148	7.299	8004408	8963149	4.910	5.257
5) T	DICAMBA	7.541	7.971	66261048	8052151	4.235	1.214 #
7) T	MCPA	7.845f	8.337	11464389	6399226	<MDL	1.996 #
8) T	DICHLORPROP	8.255	8.689	54900288	9096831	14.938	5.936 #
9) T	2,4-D	8.493	9.026	40541497	6884336	11.923	4.107 #
10) T	Pentachlo...	8.796	9.551	195.4E6	190.1E6	3.780	5.012 #
11) T	2,4,5-TP ...	9.377	9.929	85857689	130.1E6	4.291	9.063 #
12) T	2,4,5-T	9.672	10.358	85021240	246.1E6	5.113	17.847 #
13) T	2,4-DB	10.253	10.924	504.2E6	3878568	204.021	3.269 #
14) T	DINOSEB	11.470	11.313	51275330	65582853	3.621	5.985 #
15) T	Picloram	11.279	12.419	835.5E6	1116.5E6	50.040	46.567
16) T	DCPA	11.746	12.354	165.2E6	220.0E6	6.360	10.246 #

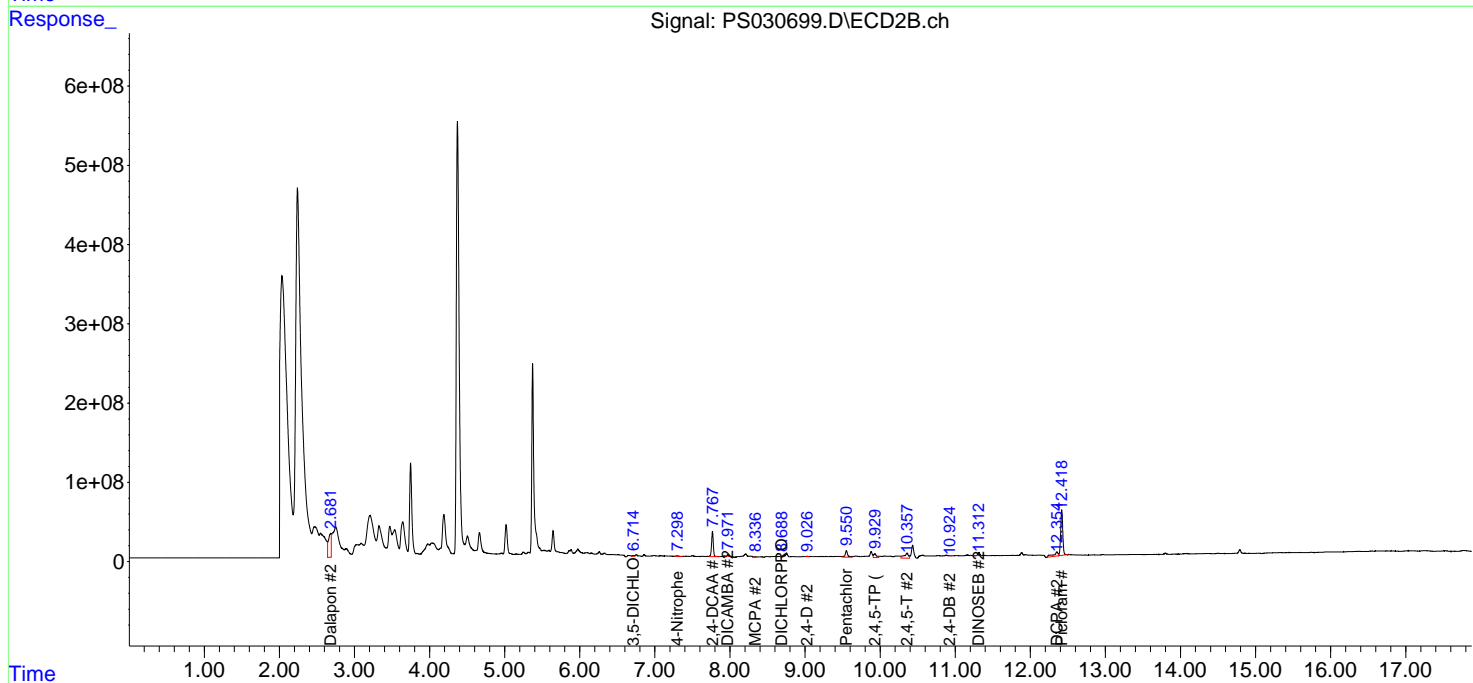
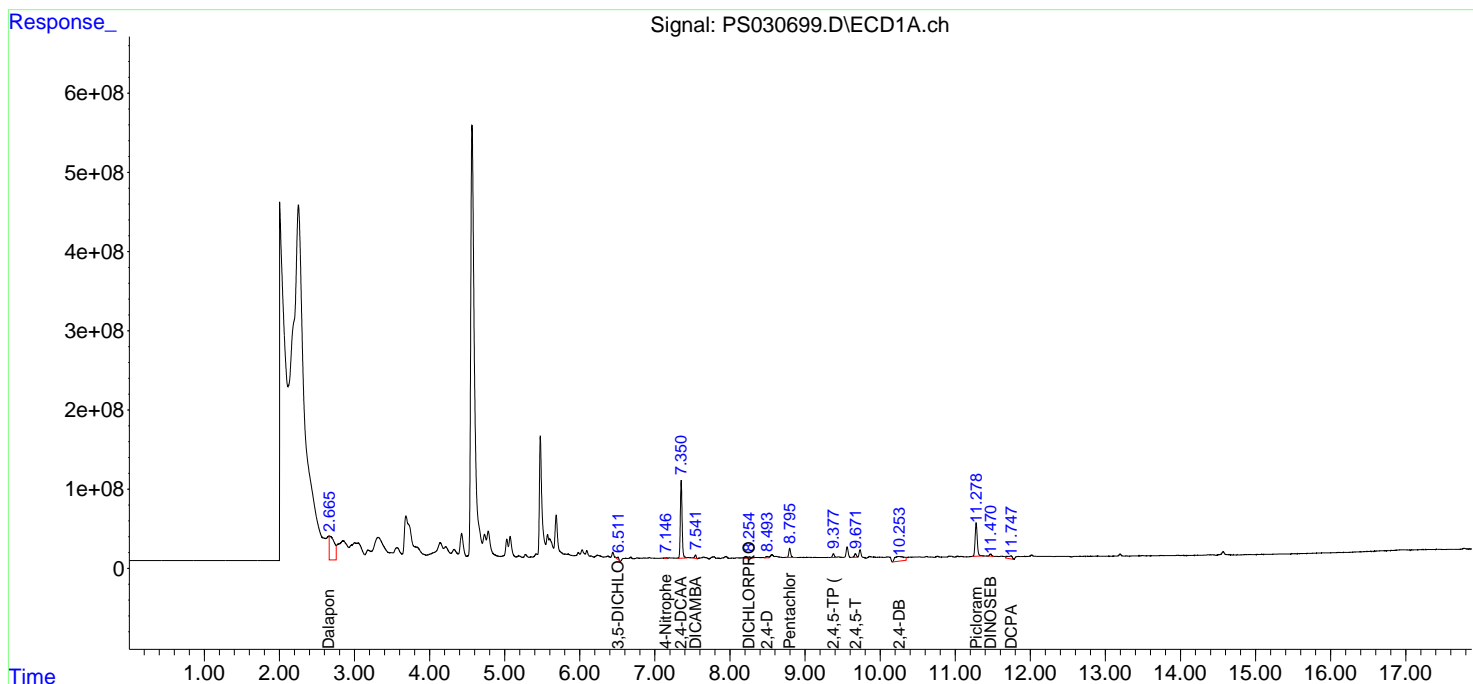
(f)=RT Delta > 1/2 Window (#)=Amounts differ by > 25% (m)=manual int.

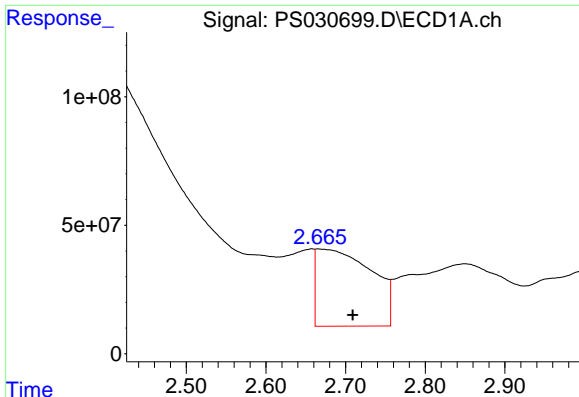
Data Path : Z:\pestpcbsrv\HPCHEM1\ECD_S\Data\PS061625\
 Data File : PS030699.D
 Signal(s) : Signal #1: ECD1A.ch Signal #2: ECD2B.ch
 Acq On : 16 Jun 2025 18:13
 Operator : AR\AJ
 Sample : PB168495BL
 Misc :
 ALS Vial : 12 Sample Multiplier: 1

Instrument :
 ECD_S
 ClientSampleId :

Integration File signal 1: autoint1.e
 Integration File signal 2: autoint2.e
 Quant Time: Jun 17 04:14:52 2025
 Quant Method : Z:\pestpcbsrv\HPCHEM1\ECD_S\Method\PS061625.M
 Quant Title : 8080.M
 QLast Update : Mon Jun 16 11:52:28 2025
 Response via : Initial Calibration
 Integrator: ChemStation

Volume Inj. : 1 µl
 Signal #1 Phase : ZB-MR1 Signal #2 Phase: ZB-MR2
 Signal #1 Info : 30M x 0.32mm x0.5 Signal #2 Info : 30M x 0.32mm x 0.25µm

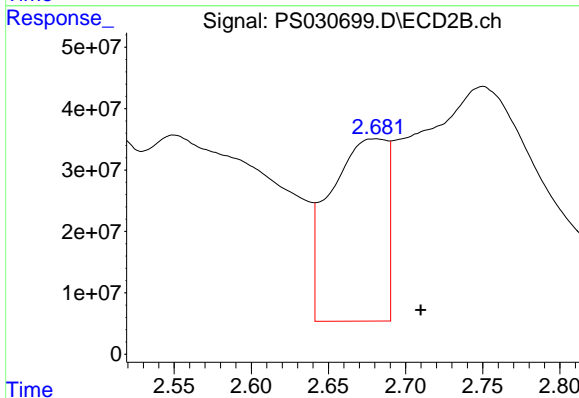




#1 Dalapon

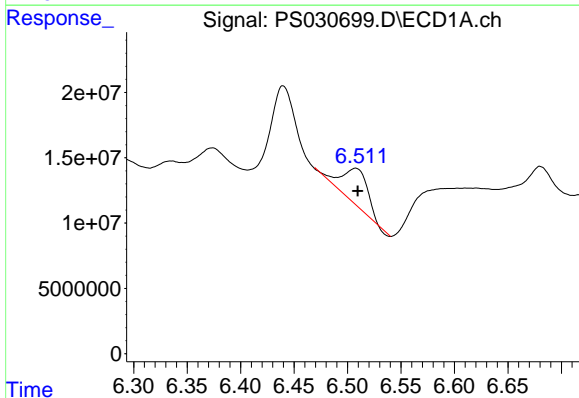
R.T.: 2.666 min
 Delta R.T.: -0.043 min
 Response: 1442086953
 Conc: 230.56 ng/ml

Instrument :
 ECD_S
 ClientSampleId :



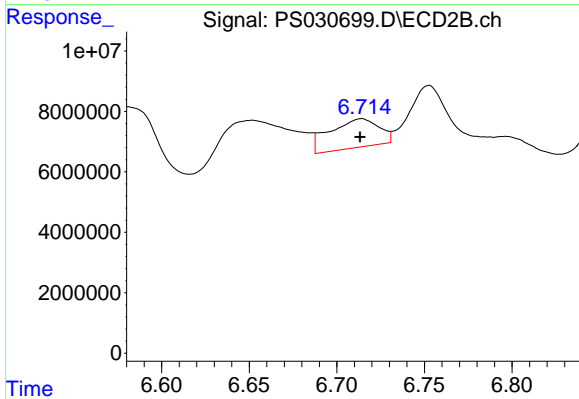
#1 Dalapon

R.T.: 2.680 min
 Delta R.T.: -0.030 min
 Response: 759305917
 Conc: 269.82 ng/ml



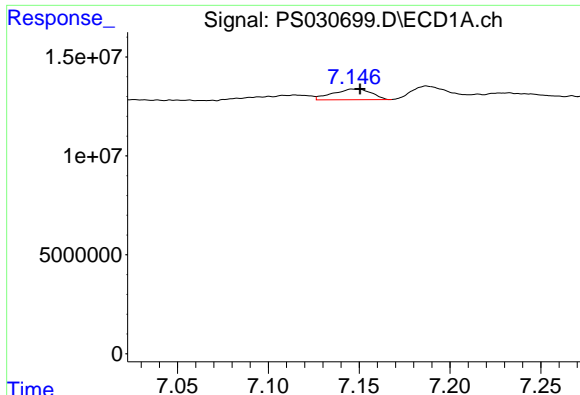
#2 3,5-DICHLOROBENZOIC ACID

R.T.: 6.508 min
 Delta R.T.: -0.002 min
 Response: 47351558
 Conc: 8.71 ng/ml



#2 3,5-DICHLOROBENZOIC ACID

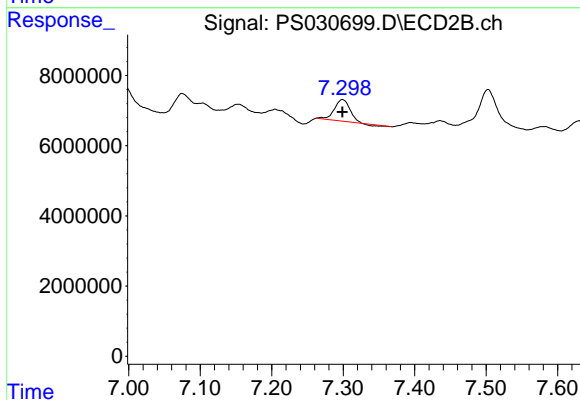
R.T.: 6.714 min
 Delta R.T.: 0.000 min
 Response: 18574767
 Conc: 11.48 ng/ml



#3 4-Nitrophenol

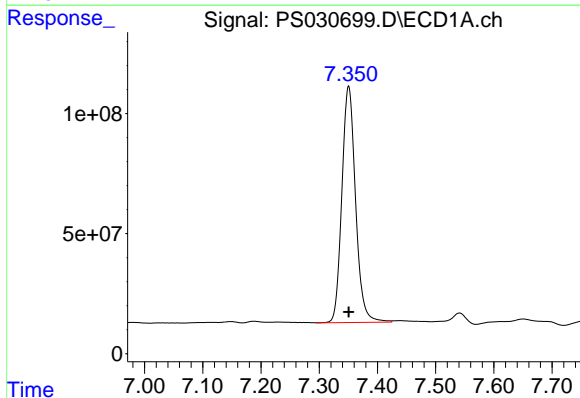
R.T.: 7.148 min
 Delta R.T.: -0.003 min
 Response: 8004408
 Conc: 4.91 ng/ml

Instrument :
 ECD_S
 ClientSampleId :



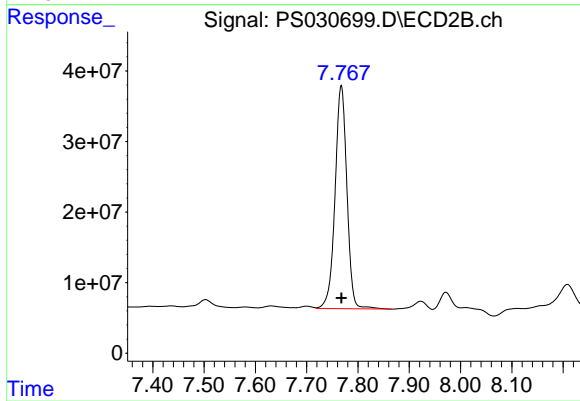
#3 4-Nitrophenol

R.T.: 7.299 min
 Delta R.T.: 0.000 min
 Response: 8963149
 Conc: 5.26 ng/ml



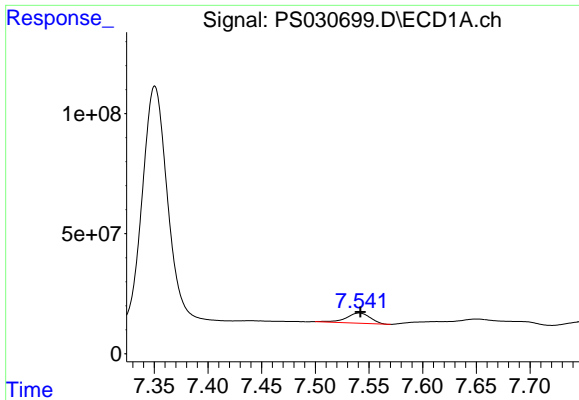
#4 2,4-DCAA

R.T.: 7.351 min
 Delta R.T.: 0.000 min
 Response: 1607645880
 Conc: 427.47 ng/ml



#4 2,4-DCAA

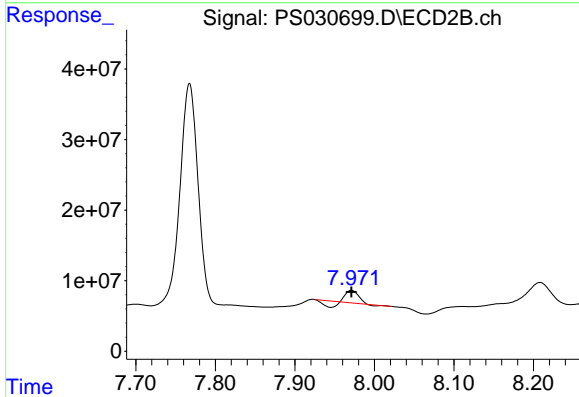
R.T.: 7.767 min
 Delta R.T.: 0.000 min
 Response: 507853822
 Conc: 470.37 ng/ml



#5 DICAMBA

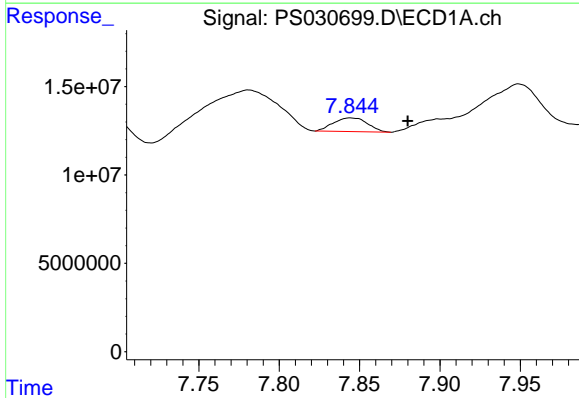
R.T.: 7.541 min
 Delta R.T.: -0.001 min
 Response: 66261048
 Conc: 4.24 ng/ml

Instrument :
 ECD_S
 ClientSampleId :



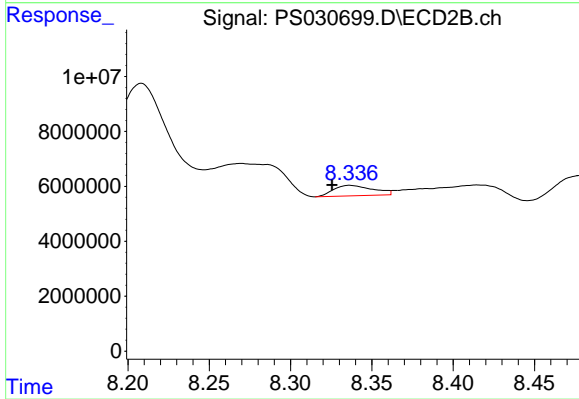
#5 DICAMBA

R.T.: 7.971 min
 Delta R.T.: 0.000 min
 Response: 8052151
 Conc: 1.21 ng/ml



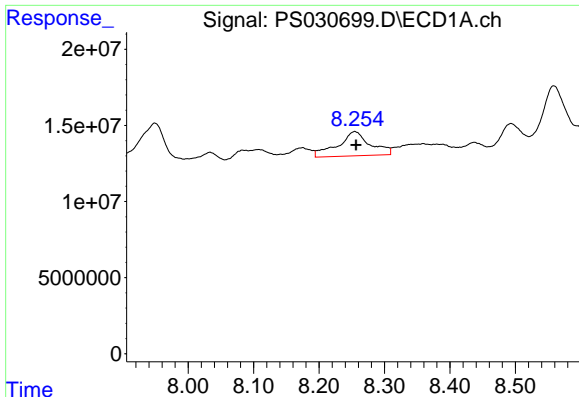
#7 MCPA

R.T.: 7.845 min
 Delta R.T.: -0.035 min
 Response: 11464389
 Conc: N.D.



#7 MCPA

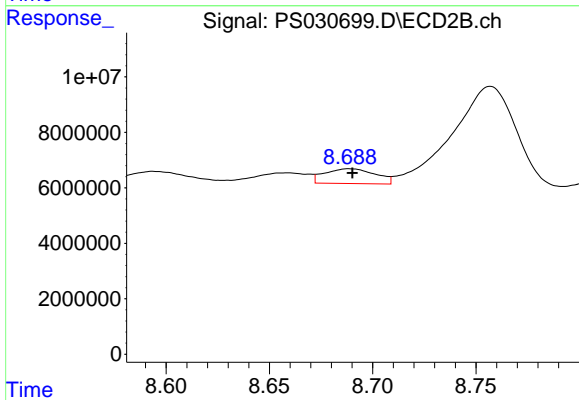
R.T.: 8.337 min
 Delta R.T.: 0.011 min
 Response: 6399226
 Conc: 2.00 ug/ml



#8 DICHLORPROP

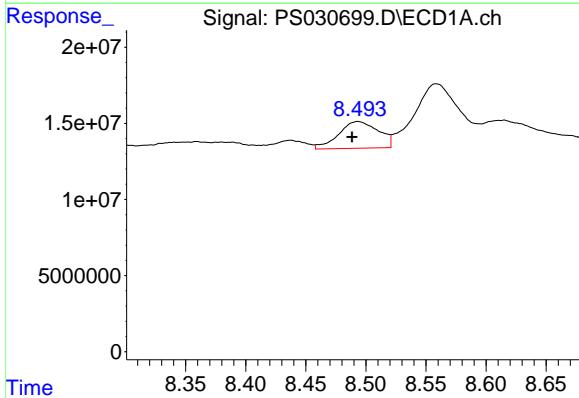
R.T.: 8.255 min
 Delta R.T.: -0.002 min
 Response: 54900288
 Conc: 14.94 ng/ml

Instrument :
 ECD_S
 ClientSampleId :



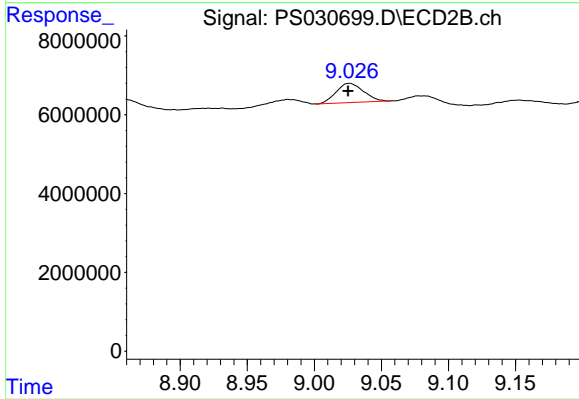
#8 DICHLORPROP

R.T.: 8.689 min
 Delta R.T.: -0.001 min
 Response: 9096831
 Conc: 5.94 ng/ml



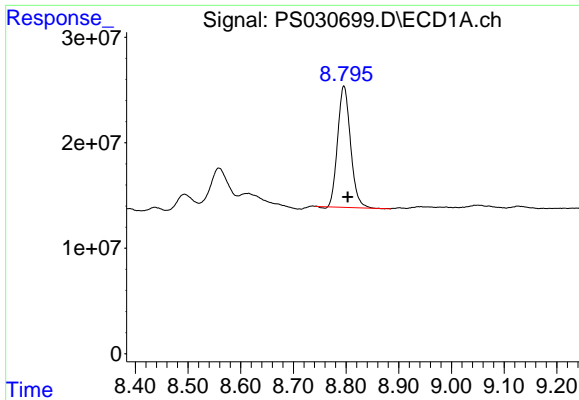
#9 2,4-D

R.T.: 8.493 min
 Delta R.T.: 0.005 min
 Response: 40541497
 Conc: 11.92 ng/ml



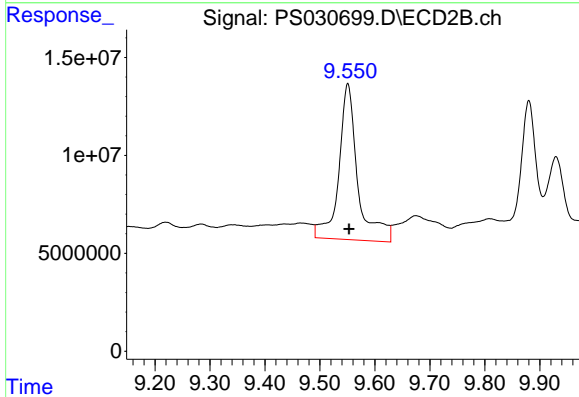
#9 2,4-D

R.T.: 9.026 min
 Delta R.T.: 0.001 min
 Response: 6884336
 Conc: 4.11 ng/ml

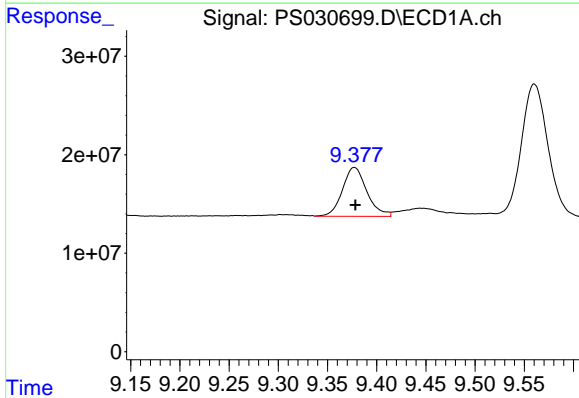


#10 Pentachlorophenol
 R.T.: 8.796 min
 Delta R.T.: -0.007 min
 Response: 195384551
 Conc: 3.78 ng/ml

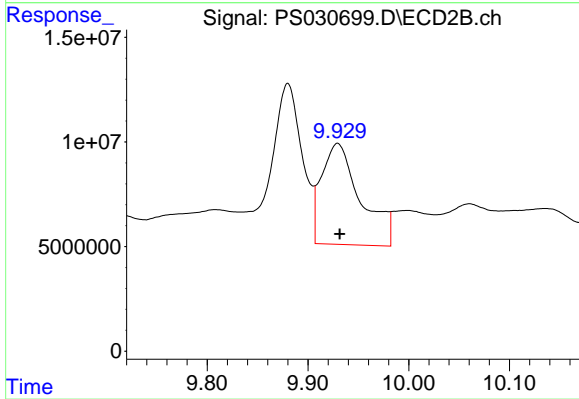
Instrument :
 ECD_S
 ClientSampleId :



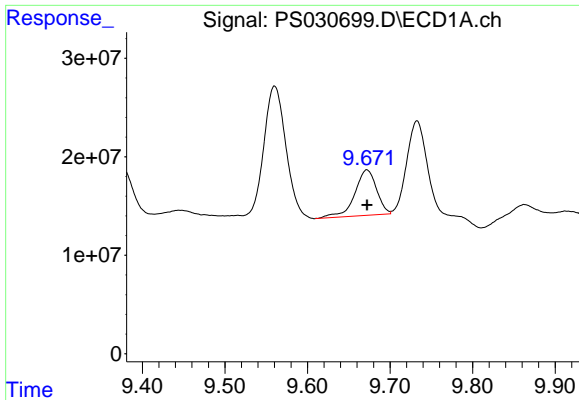
#10 Pentachlorophenol
 R.T.: 9.551 min
 Delta R.T.: -0.002 min
 Response: 190129899
 Conc: 5.01 ng/ml



#11 2,4,5-TP (SILVEX)
 R.T.: 9.377 min
 Delta R.T.: 0.000 min
 Response: 85857689
 Conc: 4.29 ng/ml



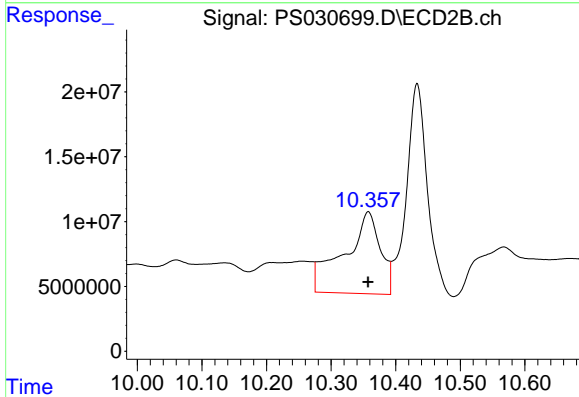
#11 2,4,5-TP (SILVEX)
 R.T.: 9.929 min
 Delta R.T.: -0.002 min
 Response: 130091639
 Conc: 9.06 ng/ml



#12 2,4,5-T

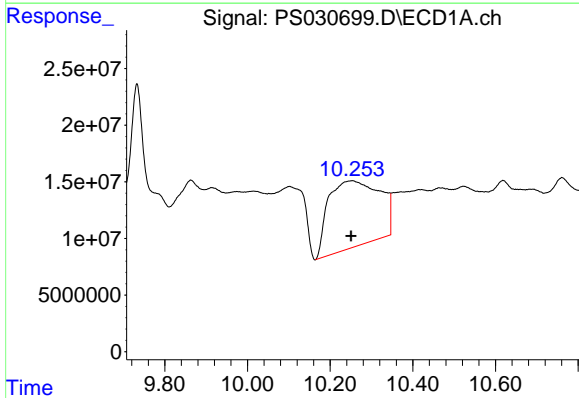
R.T.: 9.672 min
 Delta R.T.: 0.000 min
 Response: 85021240
 Conc: 5.11 ng/ml

Instrument :
 ECD_S
 ClientSampleId :



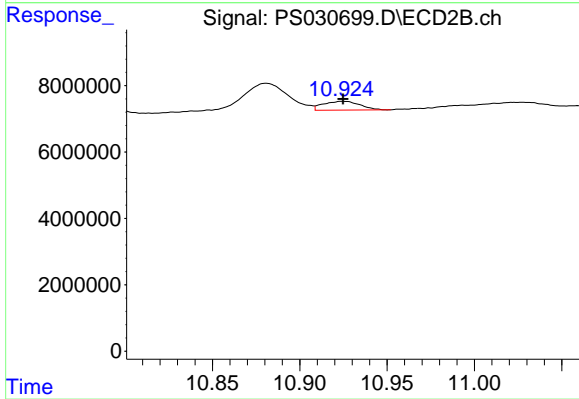
#12 2,4,5-T

R.T.: 10.358 min
 Delta R.T.: 0.000 min
 Response: 246087658
 Conc: 17.85 ng/ml



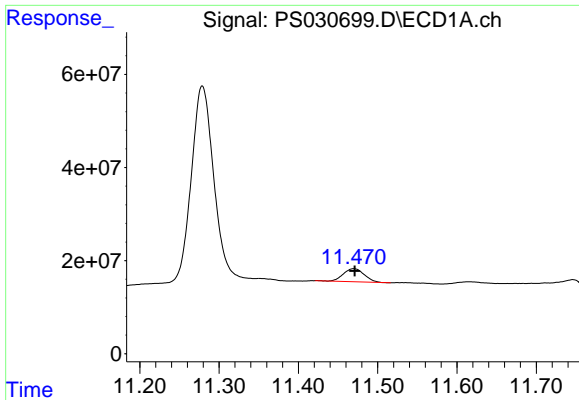
#13 2,4-DB

R.T.: 10.253 min
 Delta R.T.: 0.002 min
 Response: 504167238
 Conc: 204.02 ng/ml



#13 2,4-DB

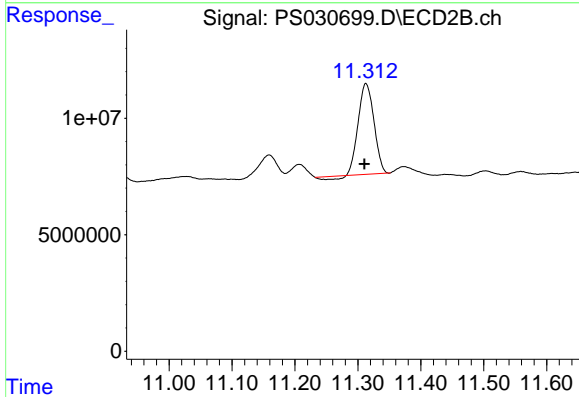
R.T.: 10.924 min
 Delta R.T.: 0.000 min
 Response: 3878568
 Conc: 3.27 ng/ml



#14 DINOSEB

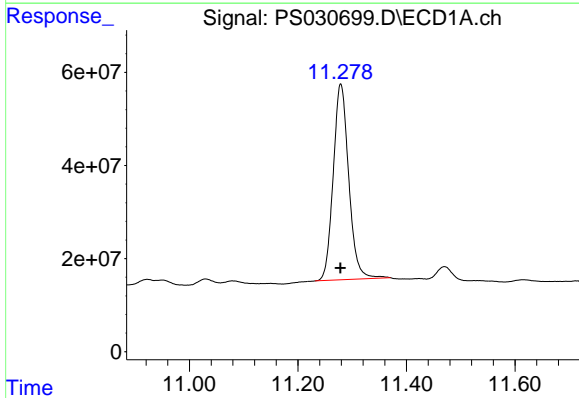
R.T.: 11.470 min
 Delta R.T.: -0.001 min
 Response: 51275330
 Conc: 3.62 ng/ml

Instrument :
 ECD_S
 ClientSampleId :



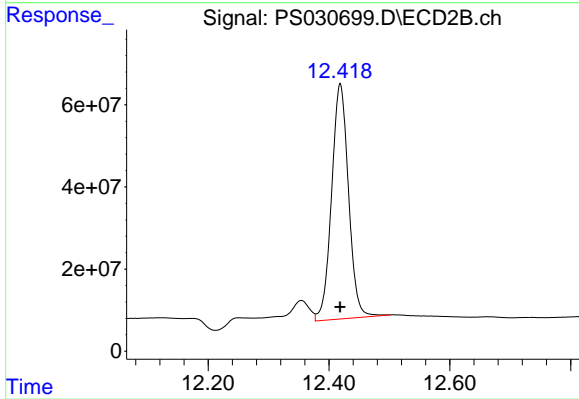
#14 DINOSEB

R.T.: 11.313 min
 Delta R.T.: 0.003 min
 Response: 65582853
 Conc: 5.99 ng/ml



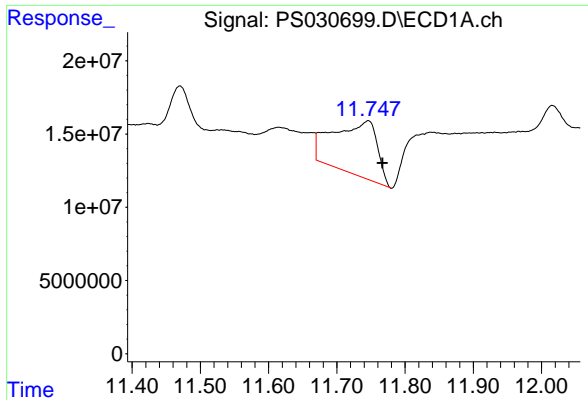
#15 Picloram

R.T.: 11.279 min
 Delta R.T.: 0.000 min
 Response: 835484831
 Conc: 50.04 ng/ml



#15 Picloram

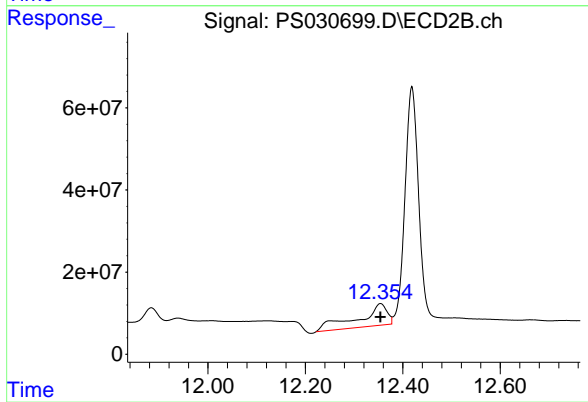
R.T.: 12.419 min
 Delta R.T.: 0.000 min
 Response: 1116493279
 Conc: 46.57 ng/ml



#16 DCPA

R.T.: 11.746 min
Delta R.T.: -0.021 min
Response: 165198270
Conc: 6.36 ng/ml

Instrument :
ECD_S
ClientSampleId :



#16 DCPA

R.T.: 12.354 min
Delta R.T.: 0.000 min
Response: 220031521
Conc: 10.25 ng/ml